

# CERTIFICATE OF HIGHWAY MILEAGE FOR YEAR ENDING FEB. 10, 1988

Fill out the certificate, file a copy with the Town Clerk, and mail original to  
Vt. Agency of Transportation, Planning Division, before February 10, 1988.

▶ IF NO CHANGES IN MILEAGE, OMIT PART I, CHECK BOX IN PART II, AND SIGN PART III. ◀

## PART I

DISTRICT 4

We, the Selectmen/Trustees/Aldermen of Royalton, Windsor County  
on an oath state that the mileage of highways, according to Title 19, V. S. A., Sec. \* 305,  
added 1985, is as follows:

	TOWN HIGHWAYS				STATE HIGHWAYS	TOTAL EXCLUDING CLASS 4
	CLASS 1	CLASS 2	CLASS 3	CLASS 4		
PREVIOUS MILEAGE AS SHOWN FEBRUARY 10, 1987	0.000	9.190	60.880	6.350	23.004	93.074
MILEAGE ADDED SINCE FEBRUARY 10, 1987 EXPLAIN UNDER (1) BELOW			0.140			0.140
SUB TOTAL			61.020			93.214
MILEAGE SUBTRACTED SINCE FEBRUARY 10, 1987 EXPLAIN UNDER (2) AND (3)				0.160		
TOTAL HIGHWAY MILEAGE FEB. 10, 1988	0.000	9.190	61.020	6.190	23.004	93.214
SCENIC HIGHWAY MILEAGE (19 VSA 2502)						

DURING THE PAST YEAR THE FOLLOWING CHANGES HAVE OCCURRED.

(1) NEW HIGHWAYS: We hereby certify that the following new highways, as substantiated by the attached Selectmen's Certificate of Completion \*have been added.

(2) DISCONTINUED: We hereby certify that the following highways have been discontinued according to statute and are substantiated by the attached copy of the proceedings.

(3) RECLASSIFIED/REMEASURED: We hereby certify that the following highways have been reclassified/remeasured and are substantiated by the attached copy of the proceedings.

T-8: +0.14 Mile Class 3; T-8: -0.16 Mile Class 4 (Reclassification and Survey)

(4) SCENIC HIGHWAYS: We hereby certify that the following highways have been designated or discontinued as "Town Scenic Highways", and are substantiated by the attached copy of the proceedings.

PART II  CHECK BOX IF NO CHANGES IN MILEAGES. FD

## PART III

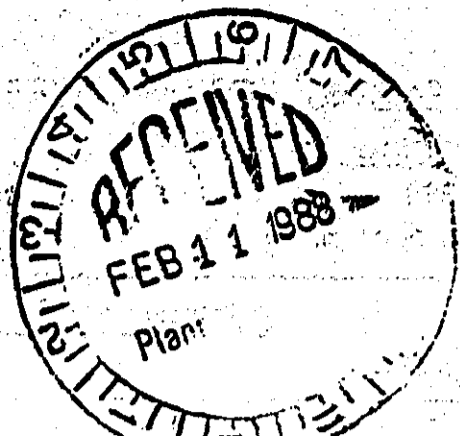
SELECTMEN/ALDERMEN/TRUSTEES  
SIGNATURES

*James B. Hall*  
*David St. Lyman*  
*Bruce M. Stone*

Town/City/Village/CLERK SIGNATURE: *Debbie C. Merrill* attests  
that this record of highway mileage was filed and recorded on Feb. 10, 1988.

Approved: *J. E. Landry* 2-19-88  
Representative, Agency of Transportation Date

Note: Applicable section of Vermont Statutes is printed on reverse side. X



Title 19, V. S. A. Section 305  
- Added 1985

SEC. 305. MEASUREMENT OF HIGHWAYS

(a) A representative of the agency in the presence of the selectmen or their designee shall measure and inspect the class 1, 2 and 3 town highways in each town at least once every ten years. The agency shall notify the town when any highway, or portion of a highway, does not meet the standards for its assigned class. If the town fails, within one year, to restore the highway or portion of the highway to the accepted standard, or to reclassify, or to discontinue, or develop an acceptable schedule for restoring to the accepted standards, the agency for purposes of apportionment under section 306 of this title shall deduct the affected mileage from that assigned to the town for the particular class of the road in question.

(b) Annually, on or before February 10, the selectmen shall, after review by a representative of the agency, file with the town clerk a sworn statement of the description and measurements of all class 1, 2 and 3 town highways, then in existence, including any special designation such as a throughway or scenic highway. When class 1, 2 or 3 town highways are accepted, discontinued, or reclassified, a copy of the proceedings shall be filed in the town clerk's office and a copy shall be forwarded to the agency.

(c) The agency shall not accept any change in mileage until the records required to be filed in the town clerk's office by this section are received by the agency.

(d) The selectmen of any town who are aggrieved by a finding of the agency concerning the measurement, description or classification of a town highway may appeal to the board by filing a notice of appeal with the executive secretary of the board.

Title 19, V. S. A. Section 2502  
Added 1985

Sec. 2502. TOWN SCENIC ROADS; DESIGNATION AND DISCONTINUANCE

(a) On recommendation of the planning commission of a municipality, or on the initiative of the legislative body of a municipality, a legislative body may, after one public hearing warned for the purpose, designate or discontinue any town highway or portion of a town highway, as a town scenic highway. Such action by the legislative body may be petitioned by the registered voters of the municipality pursuant to the provisions of section 1973 of Title 24.

(b) A town scenic road may be reconstructed or improved in a manner consistent with the standards established by the transportation board, pursuant to section 425 of Title 10. A class 1, 2 or 3 scenic highway shall still be eligible to receive aid pursuant to the provisions of this title.

(c) The legislative body of a municipality may appeal for a variance from standards promulgated by the transportation board. In these appeals the board's decision shall be final.

RETURN TO: VERMONT AGENCY OF TRANSPORTATION  
DEPARTMENT OF PLANNING AND PRECONSTRUCTION  
PLANNING DIVISION  
133 STATE STREET  
MONTPELIER, VERMONT 05602

1987

CERTIFICATE OF COMPLETION AND OPENING  
OF A HIGHWAY FOR PUBLIC TRAVEL

Gladys E. Ferris, \_\_\_\_\_ Town Clerk of the \_\_\_\_\_  
of Royalton, Vermont.

Pursuant to Title 19, V.S.A., Section 15, as amended 1973, this is to certify that  
the following described section of Class 3 Highway in the \_\_\_\_\_ Town of  
Royalton was COMPLETED AND OPEN FOR PUBLIC TRAVEL  
on June 23rd, 1987.

DESCRIPTION OF RIGHT-OF-WAY: Beginning at a point 0.24 miles northeasterly  
from the Bethel townline and extending northeasterly and  
easterly 0.20 miles to the Tunbridge townline.

and as shown on a Highway Map of the \_\_\_\_\_ of \_\_\_\_\_,  
dated \_\_\_\_\_, 19\_\_\_\_, and filed in Book \_\_\_\_\_ on page \_\_\_\_\_ of the Records  
of the \_\_\_\_\_ of \_\_\_\_\_ by the \_\_\_\_\_ Clerk of  
said \_\_\_\_\_ incorporated herein by reference and attested to on  
said map by said \_\_\_\_\_ Clerk.

Dated at Royalton, County of Windsor and State of  
Vermont, this 14 day of July, A.D., 1987.

James B. Hill  
David D. Lyman  
Bruce Morse

BOARD  
OF  
SELECTMEN  
ALDERMEN  
TRUSTEES

and the MAYOR of the City of \_\_\_\_\_.

\*\*\*\*\*

Royalton, VERMONT

July 29<sup>th</sup>, 1987.

THE ABOVE IS A TRUE COPY OF THE DESCRIPTION OF CLASS 3 HIGHWAY COMPLETED AND OPENED  
FOR PUBLIC TRAVEL, RECORDED IN BOOK Highway ON PAGE 92 OF THE Highway RECORDS  
OF THE Town OF Royalton ON THE 29<sup>th</sup> DAY OF July,  
1987, AT nine O' CLOCK, A.M.

ATTEST: Gladys E. Ferris  
Town CLERK OF Royalton, VERMONT

PUBLIC NOTICE

There will be a public hearing at the office of the Town Clerk on Tuesday, June 23, 1987, at seven o'clock p.m. in regard to reclassification of an additional .14 mile of TH #8, from class four to class three.

Royalton Board of Selectmen

like the selectmen present

Bruce Morse made the motion for the Board go into executive session on office concerns. This was seconded and moved.

Motion was made to go out of session, seconded and so voted.

As a result of executive session, Hebard will be invited into the next meeting.

No other business appearing the meeting was adjourned at 9:50 P.M.

Mary Ellen Benson  
Admin. Asst.

Here

Regular Selectmen's Meeting  
June 23<sup>rd</sup> 1987 Office of Town Clerk

Present: Jim Hall, Dave Lyman, Bev Thomas, Mary Ann Collins, Nancy Hebard, Wayne McFarlane, Bruce Morse, Phil Bates and Mary Ellen Benson

Meeting was called to order at 7:00 P.M. by Chairman Hall. The meeting was declared to be in recess by the Chairman and the highway reclassification hearing as duly advertised was convened.

Chairman Hall gave a brief history of T.M.#8 (Sage Road) which is being considered to be reclassified from class 4 to class 3. A year ago, Frank Lamson did the survey of the Royalton / Tunbridge line which had been in question by the town of Royalton for some time. Through this survey it was found that Royalton's town line extends 250' beyond Fred

and Mary Ann Collins home. The State will need to measure the road for an accurate measurement but it seems that the Highway map leaves off 100' before the turn. The Selectmen would like to reclassify all that has been gained by Turnbridge to class three standards.

No one having any objections to the intent of the Selectmen as to the reclassification of TH #8, this hearing was closed.

Chairman Hall made the motion that a vote be taken to reclassify TH #8 from class 4 to class three, the mileage to be considered as .14 miles to be added to the present mileage. This was seconded and so voted.

During the hearing Wayne Manning informed the Selectmen that DeRoss Kellogg has two stone posts erected in town right of way. Wayne had asked him to move them behind the ditch in align with the stone wall, but refuses to do so. It was decided by the Selectmen to send Mr. Kellogg a letter stating that the stone posts be moved behind the ditch in align with the wall and if action wasn't taken by him, the road crew would move them for him.

Carter Zinba also has a fence erected in town right of way. Wayne will need to speak to him and if no action is taken on his fence a letter will be sent to him also. He will have until the 15<sup>th</sup> of July before a letter will be sent.

David Israel: from Warner Bro. Production

TOTALS	CLASS 1 HIGHWAYS	CLASS 2 HIGHWAYS	CLASS 3 HIGHWAYS	STATE HIGHWAYS	TOTAL CLASS TOWN HWYS.	TOTAL TOWN HWYS.
1	218	218	218	218	218	218
2	41	41	41	41	41	41
3	1	1	1	1	1	1
4	1	1	1	1	1	1
5	1	1	1	1	1	1
6	1	1	1	1	1	1
7	1	1	1	1	1	1
8	1	1	1	1	1	1
9	1	1	1	1	1	1
10	1	1	1	1	1	1
11	1	1	1	1	1	1
12	1	1	1	1	1	1
13	1	1	1	1	1	1
14	1	1	1	1	1	1
15	1	1	1	1	1	1
16	1	1	1	1	1	1
17	1	1	1	1	1	1
18	1	1	1	1	1	1
19	1	1	1	1	1	1
20	1	1	1	1	1	1
21	1	1	1	1	1	1
22	1	1	1	1	1	1
23	1	1	1	1	1	1
24	1	1	1	1	1	1
25	1	1	1	1	1	1
26	1	1	1	1	1	1
27	1	1	1	1	1	1
28	1	1	1	1	1	1
29	1	1	1	1	1	1
30	1	1	1	1	1	1
31	1	1	1	1	1	1
32	1	1	1	1	1	1
33	1	1	1	1	1	1
34	1	1	1	1	1	1
35	1	1	1	1	1	1
36	1	1	1	1	1	1
37	1	1	1	1	1	1
38	1	1	1	1	1	1
39	1	1	1	1	1	1
40	1	1	1	1	1	1
41	1	1	1	1	1	1
42	1	1	1	1	1	1
43	1	1	1	1	1	1
44	1	1	1	1	1	1
45	1	1	1	1	1	1
46	1	1	1	1	1	1
47	1	1	1	1	1	1
48	1	1	1	1	1	1
49	1	1	1	1	1	1
50	1	1	1	1	1	1
51	1	1	1	1	1	1
52	1	1	1	1	1	1
53	1	1	1	1	1	1
54	1	1	1	1	1	1
55	1	1	1	1	1	1
56	1	1	1	1	1	1
57	1	1	1	1	1	1
58	1	1	1	1	1	1
59	1	1	1	1	1	1
60	1	1	1	1	1	1
61	1	1	1	1	1	1
62	1	1	1	1	1	1
63	1	1	1	1	1	1
64	1	1	1	1	1	1
65	1	1	1	1	1	1
66	1	1	1	1	1	1
67	1	1	1	1	1	1
68	1	1	1	1	1	1
69	1	1	1	1	1	1
70	1	1	1	1	1	1
71	1	1	1	1	1	1
72	1	1	1	1	1	1
73	1	1	1	1	1	1
74	1	1	1	1	1	1
75	1	1	1	1	1	1
76	1	1	1	1	1	1
77	1	1	1	1	1	1
78	1	1	1	1	1	1
79	1	1	1	1	1	1
80	1	1	1	1	1	1
81	1	1	1	1	1	1
82	1	1	1	1	1	1
83	1	1	1	1	1	1
84	1	1	1	1	1	1
85	1	1	1	1	1	1
86	1	1	1	1	1	1
87	1	1	1	1	1	1
88	1	1	1	1	1	1
89	1	1	1	1	1	1
90	1	1	1	1	1	1
91	1	1	1	1	1	1
92	1	1	1	1	1	1
93	1	1	1	1	1	1
94	1	1	1	1	1	1
95	1	1	1	1	1	1
96	1	1	1	1	1	1
97	1	1	1	1	1	1
98	1	1	1	1	1	1
99	1	1	1	1	1	1
100	1	1	1	1	1	1

BOUNDARY OF TOWN INCORPORATED IN 1792  
 1879  
 1885  
 1889  
 1894  
 1899  
 1904  
 1909  
 1914  
 1919  
 1924  
 1929  
 1934  
 1939  
 1944  
 1949  
 1954  
 1959  
 1964  
 1969  
 1974  
 1979  
 1984  
 1989  
 1994  
 1999  
 2004  
 2009  
 2014  
 2019  
 2024  
 2029  
 2034  
 2039  
 2044  
 2049  
 2054  
 2059  
 2064  
 2069  
 2074  
 2079  
 2084  
 2089  
 2094  
 2099  
 2104  
 2109

LEGEND  
**ROAD SURFACE TYPES**  
 BITUMINOUS HILL, INTERSTATE OR SIDE  
 BITUMINOUS HILL, INTERSTATE OR SIDE  
 BITUMINOUS CONCRETE, BRIDGE OR BLACK  
 SURFACE TREATED GRAVEL  
 GRAVEL  
 SOIL SURFACE AND CLASS GRAVELS  
 BRIDGE AND GRAINED EARTH  
 UNIMPROVED EARTH  
 UNIMPROVED  
**BRIDGES**  
 BRIDGE OR CULVERT LIES OVER 5' SPAN  
 BRIDGE OR CULVERT IS 3' TO 5' SPAN  
 BRIDGE OVER 5' SPAN  
 BRIDGE OVER 5' SPAN  
 COVERED BRIDGE  
 COVERED BRIDGE  
 BRIDGE NUMBER  
**LEGALS**  
 LEGAL TURN (FOR TOWN HWYS)  
 U.S. NUMBERED ROUTE  
 STATE NUMBERED ROUTE  
 CLASS 1 TOWN HIGHWAY  
 CLASS 2 TOWN HIGHWAY  
 CLASS 3 TOWN HIGHWAY  
 FULLY CONTROLLED ACCESS  
 FAS FEDERAL AID SECONDARY HIGHWAY  
 FAS FEDERAL AID SECONDARY HIGHWAY  
 NATIONAL FOREST HIGHWAY  
 NPH STATE FOREST HIGHWAY

MISCELLANEOUS  
 RAIL AND BRIDGE CROSSING  
 VILLAGE CENTER  
**CULTURAL FEATURES**  
 FARM UNIT  
 HOLLOW (later map only)  
 RIVER OR CREEK  
 WHOLE STORE  
 TOWN CLERK'S OFFICE  
 BUSINESS  
 SCHOOL  
 POST OFFICE  
 FINE STATION  
 CEMETERY  
 BANKING LEASED  
 MILK ROUTE  
 MILK ROUTE (community)  
 MILK ROUTE (private)

**NOTES**  
 Inventory date of cultural features is 1981. The four- and five- highway, discontinued highways, and legal trails shown herein are those of the Highway Department. Not shown where they may exist.

GENERAL HIGHWAY MAP  
 TOWN OF ROYALTON  
 1980 POPULATION: 2100  
 VERMONT AGENCY OF TRANSPORTATION  
 PLANNING DIVISION  
 SCALE: 1" = 1/2 MILE  
 1" = 0.5 KILOMETERS

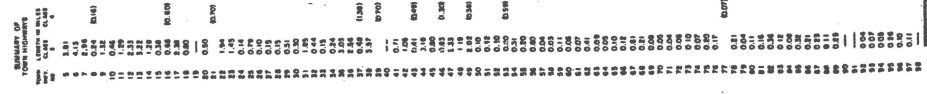
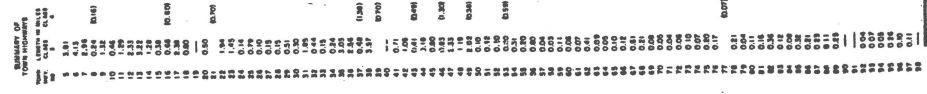
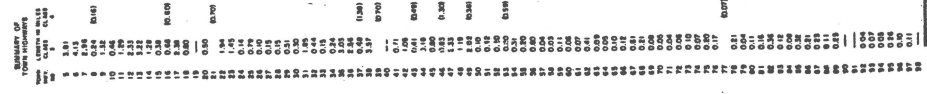
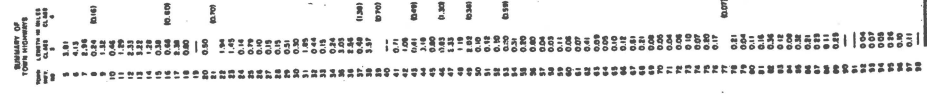
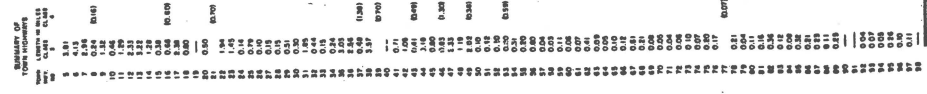
**MILEAGE SUMMARY**

CLASS 1 TOWN HIGHWAYS	0.000
CLASS 2 TOWN HIGHWAYS	899
CLASS 3 TOWN HIGHWAYS	1.948
STATE HIGHWAYS	8.810
TOTAL CLASS TOWN HWYS.	26.746
TOTAL TOWN HWYS.	70.089

INTERSTATE HWY. NO. 89	1.720
TOTAL INTERSTATE HWYS.	6.986
STATE HWY. NO. 107	0.181
TOTAL STATE HWYS.	8.810
TOTAL TRAVELED HWYS., FEB. 10, 1989	14,018
STATE HWY. NO. 107	23,004
TOTAL TRAVELED HWYS., FEB. 10, 1989	93,054

\* EXCLUDES CLASS 4 HWYS.



NEIGHBORING TOWNS: BARNARD, BETHEL, SHAMON, POMFRET, ORANGE, TUNBRIDGE

1986

**TOWN OF ROYALTON**

**P. O. BOX 680  
SOUTH ROYALTON, VERMONT 05068  
TEL. 763-7207**

December 10th, 1986

Mr. Edward Chabot  
Road Inventory Chief  
Montpelier, Vt. 05602

Dear Mr. Chabot:

The selectmen of the Town of Royalton have had town highway #8 surveyed where the towns of Bethel, Randolph, Tunbridge and Royalton meet and have found the Royalton portion of this highway is longer than the highway map indicates. Enclosed is a copy of a survey done by the towns by Frank B. Lamson, a registered surveyor who lives in the town of Royalton.

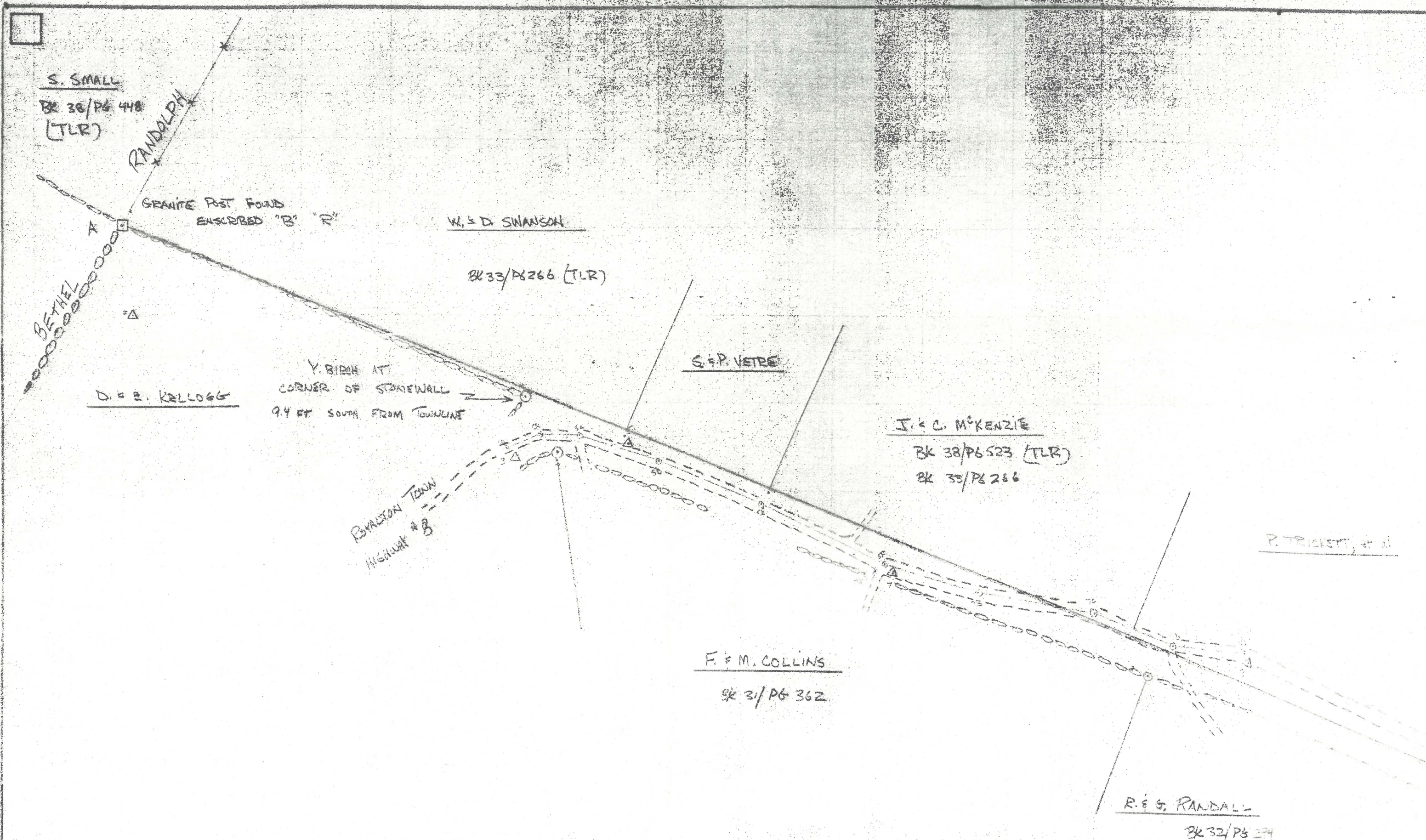
If there is anything further needed in this connection, please let us hear from you.

Yours truly,



Gladys E. Ferris  
Royalton Town Clerk





S. SMALL  
BK 30/Pg 448  
(TLR)

RANDOLPH

GRANITE POST FOUND  
ENSCRIBED "B" "D"

W. & D. SWANSON

BK 33/Pg 266 (TLR)

S. & P. VETRE

J. & C. MCKENZIE  
BK 38/Pg 523 (TLR)  
BK 33/Pg 266

P. TRICKETT, et al

F. & M. COLLINS  
BK 31/Pg 362

R. & S. RANDALL  
BK 32/Pg 274

Y. BIRCH AT  
CORNER OF STONEWALL  
9.4 FT SOUTH FROM TOWNLINE

BRYANSTON TOWN  
HIGHWAY #8

D. & B. KELLOGG

BETHEL

Fall 1986

Copy of Survey By  
Frank B Lamson