

CERTIFICATE OF HIGHWAY MILEAGE
YEAR ENDING FEBRUARY 10, 2010

Fill out form, make and file copy with the Town Clerk, and mail ORIGINAL, before February 20, 2010 to: Vermont Agency of Transportation, Division of Planning, Outreach and Community Affairs, One National Life Drive, Montpelier, VT 05633.

We, the members of the legislative body of ROCHESTER in WINDSOR County on an oath state that the mileage of highways, according to Vermont Statutes Annotated, Title 19, Section 305, added 1985, is as follows:

PART I - CHANGES TOTALS - Please fill in and calculate totals.

Table with 6 columns: Town Highways, Previous Mileage, Added Mileage, Subtracted Mileage, Total, Scenic Highways. Rows include Class 1, Class 1 Lane, Class 2, Class 3, State Highway, Class 4, Legal Trail, and Total. Handwritten values are present in the Total and Subtracted Mileage columns.

* Mileage for Class 1 Lane, Class 4, and Legal Trail classifications is NOT included in total. S. Moulton

PART II - INFORMATION AND DESCRIPTION OF CHANGES SHOWN ABOVE.

2/3/10

- 1. NEW HIGHWAYS: Please attach Selectmen's "Certificate of Completion and Opening".
2. DISCONTINUED: Please attach SIGNED copy of proceedings (minutes of meeting).
3. RECLASSIFIED/REMEASURED: Please attach SIGNED copy of proceedings (minutes of meeting). Error correction to mileage of LT-3 applied by VTrans 4/14/10 mileage changed from 1.76 to 1.37
4. SCENIC HIGHWAYS: Please attach a copy of order designating/discontinuing Scenic Highways.

IF THERE ARE NO CHANGES IN MILEAGE: Check box and sign below. []

PART III - SIGNATURES - PLEASE SIGN.

Selectmen/ Aldermen/ Trustees Signatures:

Handwritten signatures of selectmen/aldermen/trustees.

T/C/V Clerk Signature:

Handwritten signature of T/C/V Clerk: Jane McDonnell

Date Filed:

1/25/10

Please sign ORIGINAL and return it for Transportation signature.

AGENCY OF TRANSPORTATION APPROVAL:

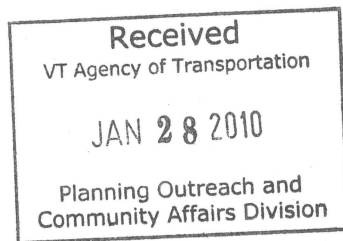
Signed copy will be returned to T/C/V Clerk.

APPROVED:

Representative, Agency of Transportation

DATE:

5/19/2010



Vermont Statutes Annotated

19 V.S.A. § 305. Measurement and inspection

§ 305. Measurement and inspection

(a) After reasonable notice to the selectboard, a representative of the agency may measure and inspect the class 1, 2, and 3 town highways in each town to verify the accuracy of the records on file with the agency. Upon request, the selectboard or their designee shall be permitted to accompany the representative of the agency during the measurement and inspection. The agency shall notify the town when any highway, or portion of a highway, does not meet the standards for its assigned class. If the town fails, within one year, to restore the highway or portion of the highway to the accepted standard, or to reclassify, or to discontinue, or develop an acceptable schedule for restoring to the accepted standards, the agency for purposes of apportionment under section 306 of this title shall deduct the affected mileage from that assigned to the town for the particular class of the road in question.

(b) Annually, on or before February 10, the selectboard shall file with the town clerk a sworn statement of the description and measurements of all class 1, 2, 3, and 4 town highways and trails then in existence, including any special designation such as a throughway or scenic highway. When class 1, 2, 3, or 4 town highways, trails, or unidentified corridors are accepted, discontinued, or reclassified, a copy of the proceedings shall be filed in the town clerk's office and a copy shall be forwarded to the agency.

(c) All class 1, 2, 3, and 4 town highways and trails shall appear on the town highway maps by July 1, 2015.

(d) At least 45 days prior to first including a town highway or trail that is not clearly observable by physical evidence of its use as a highway or trail and that is legally established prior to February 10, 2006 in the sworn statement required under subsection (b) of this section, the legislative body of the municipality shall provide written notice and an opportunity to be heard at a duly warned meeting of the legislative body to persons owning lands through which a highway or trail passes or abuts.

(e) The agency shall not accept any change in mileage until the records required to be filed in the town clerk's office by this section are received by the agency. A request by a municipality to the agency for a change in mileage shall include a description of the affected highway or trail, a copy of any surveys of the affected highway or trail, minutes of meetings at which the legislative body took action with respect to the changes, and a current town highway map with the requested deletions and additions sketched on it. A survey shall not be required for class 4 town highways that are legally established prior to February 10, 2006. All records filed with the agency are subject to verification in accordance with subsection (a) of this section.

(f) The selectboard of any town who are aggrieved by a finding of the agency concerning the measurement, description or classification of a town highway may appeal to the transportation board by filing a notice of appeal with the executive secretary of the transportation board.

(g) The agency shall provide each town with a map of all of the highways in that town together with the mileage of each class 1, 2, 3, and 4 highway, as well as each trail, and such other information as the agency deems appropriate.

Excerpt of 19 V.S.A. § 305 - *Measurement and inspection* from Vermont Statutes Online located at – <http://www.leg.state.vt.us/statutes/fullsection.cfm?Title=19&Chapter=003&Section=00305>

12/29/2009

ROCHESTER TH-27/LT-3

14 Apr 2010

$$1947 \quad 0.39 \quad + \quad 2.49 \quad = \quad 2.88$$



$$1958 \quad 0.39 + 0.48 + 0.64 + (1.37) = 2.88$$



$$1972 \quad 0.48 + 0.48 + 0.55 + (1.37) = 2.88$$

(1.37) = calculated / assumed value

Town: ROCHESTER

Hwy. Dist. 4 County: Windsor

RECORD OF MILEAGE CHANGES

Planning, Outreach and Community Affairs Division - Mapping Unit

Date	Road Class		Change		Net Change		Remarks
	System	No	From	To	+(Add)	-(Deduct)	
APR 2010	LT	LT 1	0.00	0.73	0.73		History: 0.93 portion of TH-13 reclassified to Legal Trail (1987) 0.73 LT mileage approved by Selectboard (2010) change in mileage due to remeasurement
	LT	LT 2	0.00	0.90	0.90		History: 0.89 portion of TH-67 reclassified to Legal Trail (1987) 0.90 LT mileage approved by Selectboard (2010) change in mileage due to remeasurement
	LT	LT 3	0.00	1.37	1.37		History: 1.75 portion of TH-27 reclassified to Legal Trail (1987) 1.76 LT mileage approved by Selectboard (Jan 2010) change in mileage due to remeasurement 1.37 Error correction by VTrans (Apr 2010)
	LT	LT 4	0.00	1.10	1.10		History: 1.10 portion of TH-74 reclassified to Legal Trail (1987) 1.10 LT mileage approved by Selectboard (2010)
	LT	LT 5	0.00	1.75	1.75		History: 1.80 portion of TH-2 reclassified to Legal Trail (1987) 1.75 LT mileage approved by Selectboard (2010) change in mileage due to remeasurement
	LT	LT 6	0.00	0.23	0.23		History: 0.25 portion of TH-25 reclassified to Legal Trail (1987) 0.23 LT mileage approved by Selectboard (2010) change in mileage due to remeasurement
	LT	LT 7	0.00	0.57	0.57		History: 0.62 portion of TH-25 reclassified to Legal Trail (1987) 0.57 LT mileage approved by Selectboard (2010) change in mileage due to remeasurement
	TOWN TOTAL	LT	0.00	6.65			
	TOWN TOTAL	ALL SYS.	68.155	68.155	Excludes CL4 & LT		

State of Vermont
Agency of Transportation

Division of Policy, Outreach and Community Affairs - Mapping Unit

1 National Life Drive
Montpelier, VT 05633-5001
<http://www.aot.state.vt.us>

Telephone: 802-828-2109
Fax: 802-828-2334
Email: sara.moulton@state.vt.us

Rochester
Chair, Selectboard
Rochester, c/o Town Clerk
PO Box 238
Rochester, VT 05767

January 5, 2010

Below is a table summarizing the information on Legal Trails that is on file in the Mapping Unit. Act 178 of 2006 requires the measurement of trails be included on the sworn statement, the Mileage Certificate. To assist in this, we are providing a summary of the information we have on the trails that are shown on the Town Highway Maps, including mileage and former town highway number. The majority of trails were created by the reclassification of a town highway into a trail, thus the legal trail inherited an official measurement. The former town highway number is included in the FORMER_RTNAME column, and the former town highway mileage is in the AOTMILES column for each trail. VTrans has assigned a trail number, such as LT-1, to make the trails distinct. If the AOTMILES column is zero, the municipality will need to provide a mileage. The column ARCMILES contains the mileage as generated by the geometry of the trail, as digitized in the Geographic Information System (GIS). The mileages included in this table should be used as approximate mileages and the municipality should measure or verify the mileage of these trails.

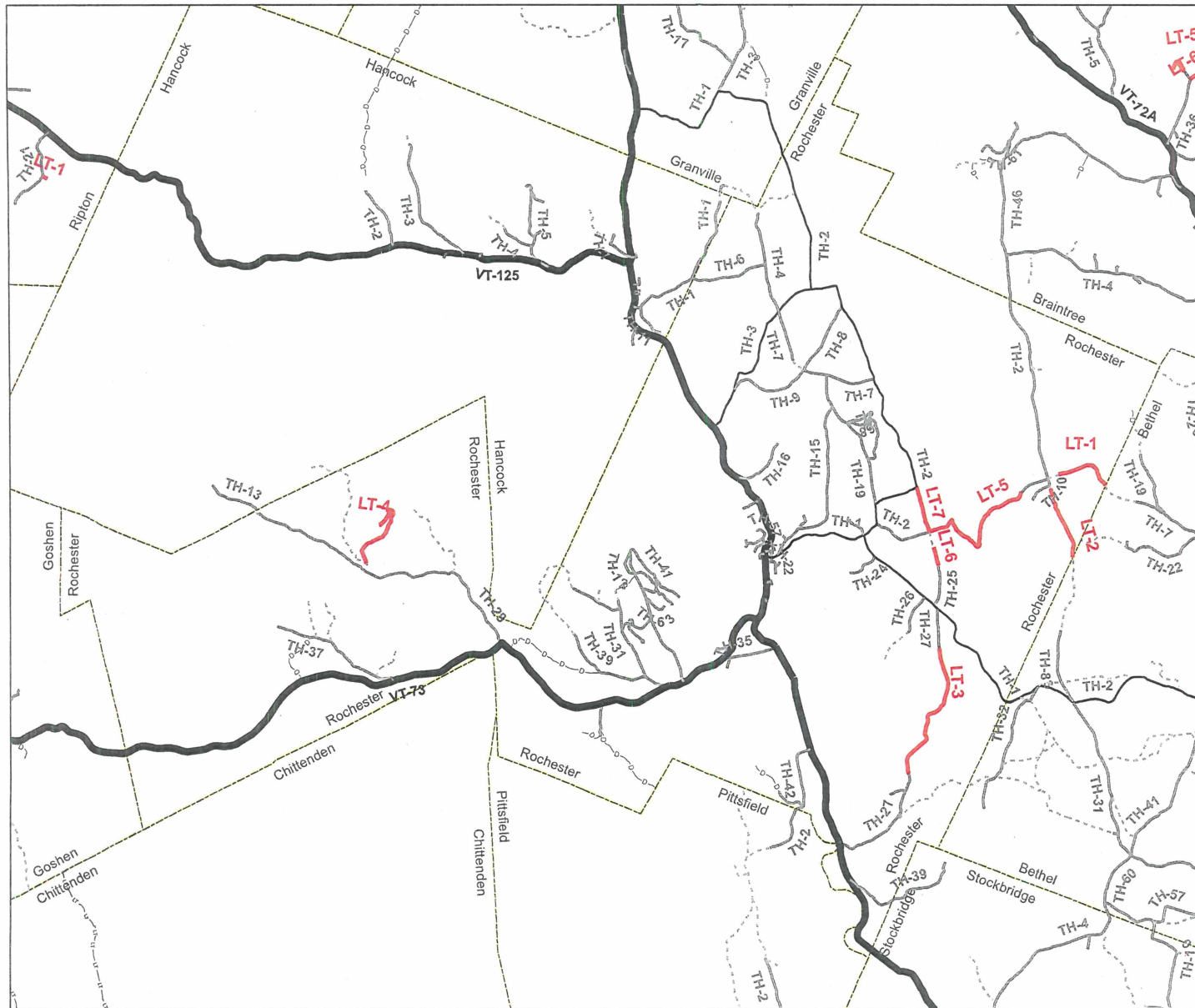
A map showing the Legal Trail numbers and mileage has been included with this packet to further assist in this project. Also included is a summary sheet containing additional remarks about the Legal Trails. Any additional trails that exist should be added to the Mileage Certificate, as defined in the provided guidelines. Please feel free to contact us with any questions or comments regarding the above information, or the Mileage Certificates in general.

HIGHWAY / LEGAL TRAIL IDENTIFIER	AOTMILES	ARCMILES	FORMER TOWN HIGHWAY NUMBER
LT-1	0.93	0.73	TH-13
LT-2	0.89	0.90	TH-67
LT-3	1.75	1.76	TH-27
LT-4	1.10	1.10	TH-74
LT-5	1.80	1.75	TH-2
LT-6	0.25	0.23	TH-25
LT-7	0.62	0.57	TH-25

If you have any questions, please call me at 802-828-2109 or send email to sara.moulton@state.vt.us.

Thank you.

Sara Moulton
Mapping and GIS Specialist



LEGAL TRAIL NUMBER	LENGTH IN MILES
LT-1	0.93
LT-2	0.89
LT-3	1.75
LT-4	1.10
LT-5	1.80
LT-6	0.25
LT-7	0.62

HIGHWAYS

- UNVERIFIED LEGAL TRAIL
- INTERSTATE OR DIVIDED HIGHWAY
- STATE - HARD SURFACE OR PAVED
- CLASS 1
- CLASS 2
- CLASS 3
- CLASS 4
- - - VERIFIED LEGAL TRAIL
- - - DISCONTINUED

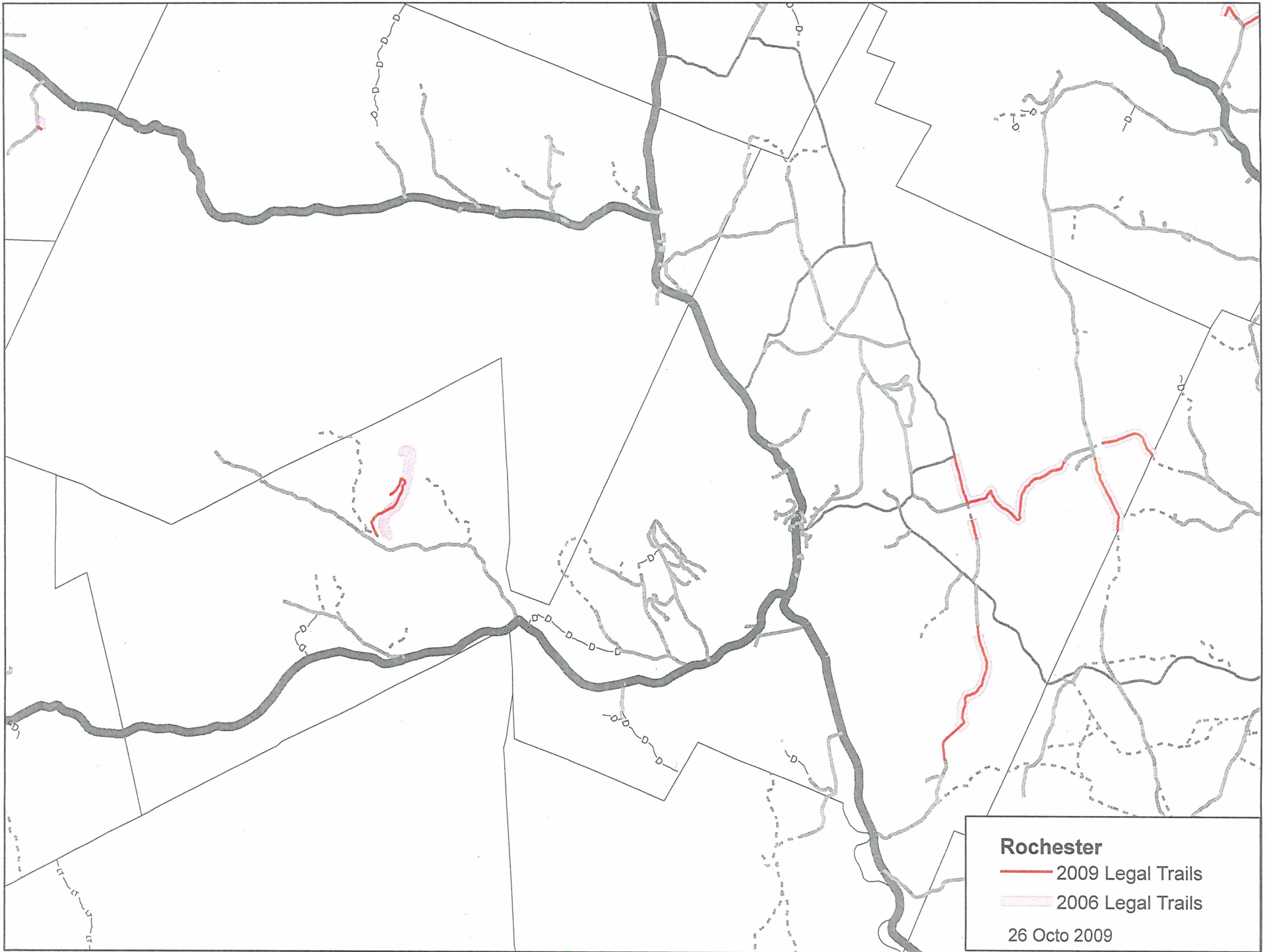
**LEGAL TRAIL VERIFICATION
TOWN OF ROCHESTER**

WINDSOR COUNTY

Map generated: December 15, 2009
Mapping Unit
Vermont Agency of Transportation

SCALE 1:77,212





Rochester
— 2009 Legal Trails
— 2006 Legal Trails
26 Octo 2009