

CERTIFICATE OF HIGHWAY MILEAGE
YEAR ENDING FEBRUARY 10, 2013

Fill out form, make and file copy with the Town Clerk, and mail ORIGINAL, before February 20, 2013 to:
Vermont Agency of Transportation, Division of Policy, Planning and Intermodal Development,
One National Life Drive, Montpelier, VT 05633.

We, the members of the legislative body of READING in WINDSOR County
on an oath state that the mileage of highways, according to Vermont Statutes Annotated, Title 19, Section 305,
added 1985, is as follows:

PART I - CHANGES TOTALS - Please fill in and calculate totals.

Table with 6 columns: Town Highways, Previous Mileage, Added Mileage, Subtracted Mileage, Total, Scenic Highways. Rows include Class 1, Class 2, Class 3, State Highway, Total, Class 1 Lane, Class 4, Legal Trail, Unidentified Corridor.

* Mileage for Class 1 Lane, Class 4, Legal Trail, and Unidentified Corridor classifications are NOT included in total.

PART II - INFORMATION AND DESCRIPTION OF CHANGES SHOWN ABOVE.

- 1. NEW HIGHWAYS: Please attach Selectmen's "Certificate of Completion and Opening".
2. DISCONTINUED: Please attach SIGNED copy of proceedings (minutes of meeting).
3. RECLASSIFIED/REMEASURED: Please attach SIGNED copy of proceedings (minutes of meeting).
4. SCENIC HIGHWAYS: Please attach a copy of order designating/discontinuing Scenic Highways.

IF THERE ARE NO CHANGES IN MILEAGE: Check box and sign below. [X]

PART III - SIGNATURES - PLEASE SIGN.

Selectmen/ Aldermen/ Trustees Signatures:

Handwritten signatures of Robert K. Allen, James Peplay, and Gordon Eastman.

T/C/V Clerk Signature:

Handwritten signature of Amy Hackett.

Date Filed:

Handwritten date 2/19/2013.

Please sign ORIGINAL and return it for Transportation signature.

AGENCY OF TRANSPORTATION APPROVAL:

Signed copy will be returned to T/C/V Clerk.

APPROVED:

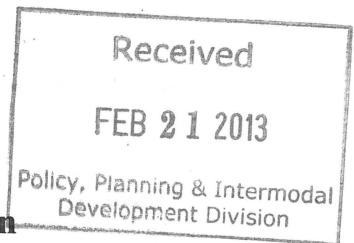
Handwritten signature of Johnathan Croft, Representative, Agency of Transportation.

DATE:

Handwritten date 2/21/2013.

Vermont Statutes Annotated

19 V.S.A. § 305. Measurement and inspection



§ 305. Measurement and inspection

- (a) After reasonable notice to the selectboard, a representative of the agency may measure and inspect the class 1, 2, and 3 town highways in each town to verify the accuracy of the records on file with the agency. Upon request, the selectboard or their designee shall be permitted to accompany the representative of the agency during the measurement and inspection. The agency shall notify the town when any highway, or portion of a highway, does not meet the standards for its assigned class. If the town fails, within one year, to restore the highway or portion of the highway to the accepted standard, or to reclassify, or to discontinue, or develop an acceptable schedule for restoring to the accepted standards, the agency for purposes of apportionment under section 306 of this title shall deduct the affected mileage from that assigned to the town for the particular class of the road in question.
- (b) Annually, on or before February 10, the selectboard shall file with the town clerk a sworn statement of the description and measurements of all class 1, 2, 3, and 4 town highways and trails then in existence, including any special designation such as a throughway or scenic highway. When class 1, 2, 3, or 4 town highways, trails, or unidentified corridors are accepted, discontinued, or reclassified, a copy of the proceedings shall be filed in the town clerk's office and a copy shall be forwarded to the agency.
- (c) All class 1, 2, 3, and 4 town highways and trails shall appear on the town highway maps by July 1, 2015.
- (d) At least 45 days prior to first including a town highway or trail that is not clearly observable by physical evidence of its use as a highway or trail and that is legally established prior to February 10, 2006 in the sworn statement required under subsection (b) of this section, the legislative body of the municipality shall provide written notice and an opportunity to be heard at a duly warned meeting of the legislative body to persons owning lands through which a highway or trail passes or abuts.
- (e) The agency shall not accept any change in mileage until the records required to be filed in the town clerk's office by this section are received by the agency. A request by a municipality to the agency for a change in mileage shall include a description of the affected highway or trail, a copy of any surveys of the affected highway or trail, minutes of meetings at which the legislative body took action with respect to the changes, and a current town highway map with the requested deletions and additions sketched on it. A survey shall not be required for class 4 town highways that are legally established prior to February 10, 2006. All records filed with the agency are subject to verification in accordance with subsection (a) of this section.
- (f) The selectboard of any town who are aggrieved by a finding of the agency concerning the measurement, description, or classification of a town highway may appeal to the transportation board by filing a notice of appeal with the executive secretary of the transportation board.
- (g) The agency shall provide each town with a map of all of the highways in that town together with the mileage of each class 1, 2, 3, and 4 highway, as well as each trail, and such other information as the agency deems appropriate.

Excerpt of 19 V.S.A. § 305 - *Measurement and inspection* from Vermont Statutes Online located at – <http://www.leg.state.vt.us/statutes/fullsection.cfm?Title=19&Chapter=003&Section=00305>

12/27/2012

INDEX OF SHEETS

1	TITLE SHEET
2	PRELIMINARY INFORMATION
3-4	QUANTITY SHEETS
5	TIE SHEET
6-7	LAYOUT SHEET 1 & 2
8	PROFILE
9-12	BORING SHEET
13	PLAN AND ELEVATION
14	GENERAL NOTES
15	DECK REINFORCING
16	FRAMING PLAN
17	BEARING DETAILS
18	MISCELLANEOUS STEEL AND CONCRETE DETAILS
19	MISCELLANEOUS DETAILS
20	ABUTMENT #1 DETAILS
21	ABUTMENT #2 DETAILS
22	WINGWALL #1 DETAILS
23	WINGWALL #2 DETAILS
24	WINGWALL #3 DETAILS
25	WINGWALL #4 DETAILS
26	FOOTING REINFORCING DETAILS
27	TRAFFIC SIGN SUMMARY SHEET
28	ROW PLAN
29	ROW DETAILS
30	REINFORCING STEEL SCHEDULE
31	EROSION CONTROL NARRATIVE SHEET
32	EXISTING CONDITIONS SITE PLAN
33	EROSION PREVENTION AND SEDIMENT CONTROL PLAN
34	FINAL CONDITIONS SITE PLAN
35	EROSION CONTROL DETAIL SHEET #1
36	EROSION CONTROL DETAIL SHEET #2
37	EROSION CONTROL DETAIL SHEET #3
38-43	MAIN LINE CROSS SECTIONS
44-49	CHANNEL CROSS SECTIONS

STATE OF VERMONT AGENCY OF TRANSPORTATION

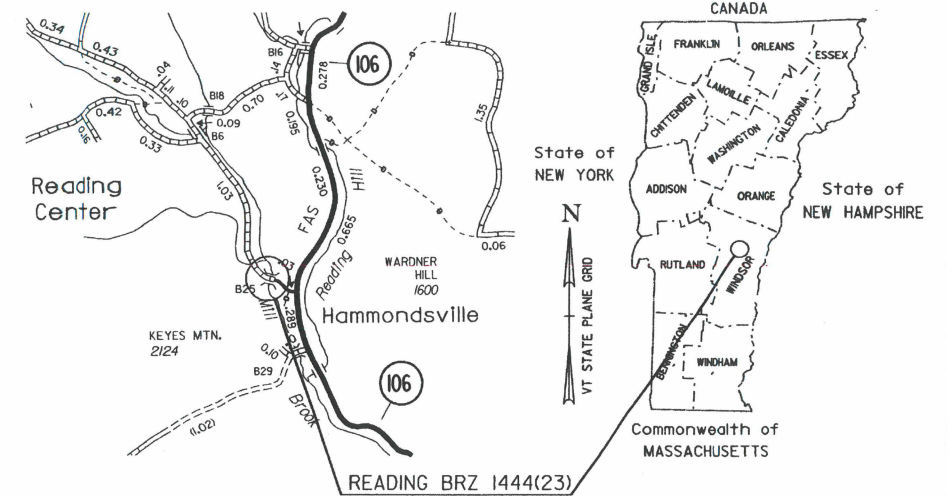


PROPOSED IMPROVEMENT BRIDGE PROJECT TOWN OF READING COUNTY OF WINDSOR

ROUTE NO : TH 8, CL.3 BRIDGE NO : B25

PROJECT LOCATION : BEGINNING AT A POINT ON TH 8 APPROXIMATELY 0.11 MILE FROM THE INTERSECTION OF TH 8 AND VT 106 AND PROCEEDING NORTHWESTERLY ALONG TH 8 0.08 MILES.
PROJECT DESCRIPTION : THE PROJECT SHALL CONSIST OF THE CONSTRUCTION OF A NEW STRUCTURE ALONG WITH RELATED ROADWAY APPROACH AND CHANNEL WORK.

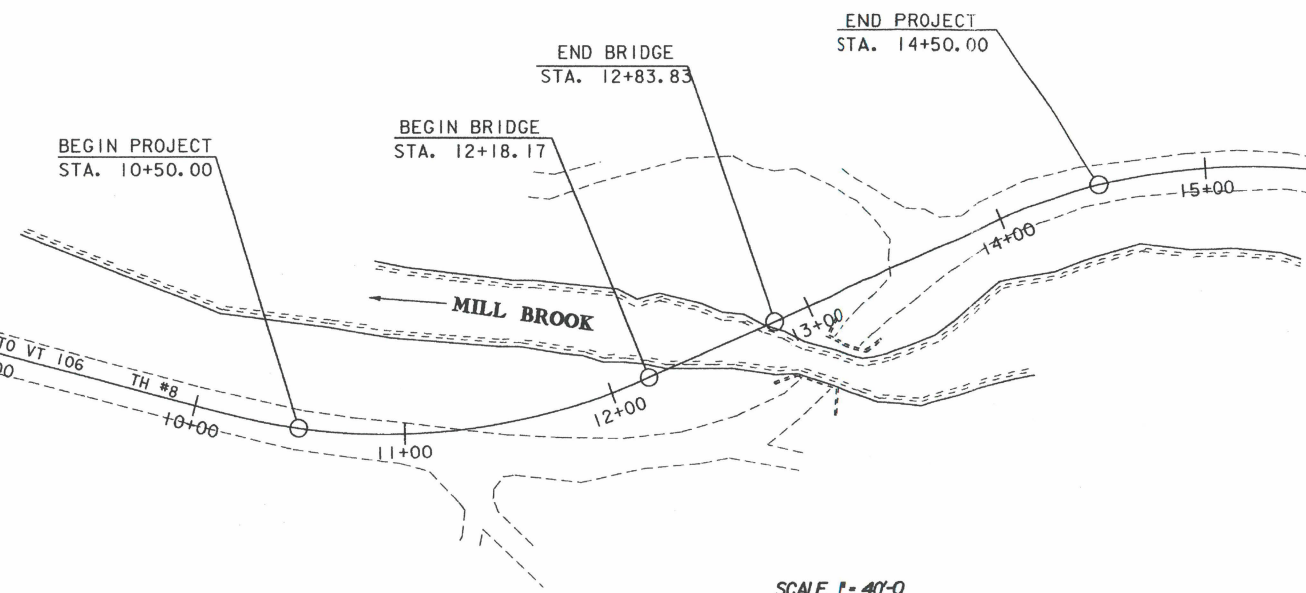
LENGTH OF STRUCTURE : 65.66 FEET.
LENGTH OF PARTICIPATION ROADWAY : 334.34 FEET.
LENGTH OF PROJECT : 400.00 FEET.



*alignmant change only
no mileage change
S. Moulton 8 Nov 2012*

LIST OF STANDARDS

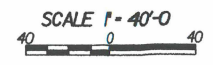
B-5	6/1/94
B-71	7/8/05
E-100	1/2/04
E-101	5/30/03
E-102	6/30/03
E-102a	5/1/04
E-107	6/30/03
E-107a	8/8/95
E-121	8/8/95
E-142	9/20/95
E-151	5/1/04
E-160	5/20/99
F-1	6/1/94
G-1	1/3/00
G-1d	1/3/00
SB-R6-82	1/6/95



CONVENTIONAL SYMBOLS

COUNTY LINE	— — — — —
TOWN LINE	— — — — —
LIMITS OF ACCESS	— — — — —
POINT OF ACCESS	X
FENCE LINE	X — X — X — X
STONE WALL	— — — — —
TRAVELED WAY	— — — — —
GUARD RAIL	— — — — —
RAILROAD	— — — — —
SURVEY LINE	— — — — —
CULVERT	— — — — —
POWER POLE	⊕
TELEPHONE POLE	⊕
TREES	⊕
CONTROL OF ACCESS	— — — — —
PROPERTY LINE	— — — — —
R.O.W. TAKING LINE	— — — — —
SLOPE RIGHTS	— — — — —
TOP OF CUT	— — — — —
TOE OF SLOPE	— — — — —

SURVEYED BY : R. GILMAN
SURVEYED DATE : 3/92
DATUM
VERTICAL USGS 1928
HORIZONTAL ASSUMED



RECORD PLANS

CONTRACTOR: MILLER CONSTRUCTION, WINDSOR VT.
RESIDENT ENGINEER: JEREMY REED
CONSTRUCTION BEGAN: MAY 7, 2008
CONSTRUCTION COMPLETE: NOVEMBER 11, 2008
RECORD PLANS BY: JEREMY REED

I HEREBY CERTIFY THAT ALL THE CONSTRUCTION REQUIRED BY THIS SET OF DRAWINGS HAS BEEN ACCOMPLISHED AS INDICATED HEREIN.

BY *Jeremy Reed* RESIDENT ENGINEER
DATE March 31, 2009

NOTE: Any further information concerning final quantities, amounts or other details relative to this project may be found at Central Files in the electronic archives.

THESE PLANS ARE SUBJECT TO SUCH ENGINEERING CHANGES AS MAY BE REQUIRED BY THE FEDERAL HIGHWAY ADMINISTRATION OR THE DIRECTOR OF PROGRAM DEVELOPMENT.
CONSTRUCTION IS TO BE CARRIED ON IN ACCORDANCE WITH THESE PLANS AND THE STANDARD SPECIFICATIONS FOR CONSTRUCTION DATED 2006, AS APPROVED BY THE FEDERAL HIGHWAY ADMINISTRATION ON JUNE 15, 2006 FOR USE ON THIS PROJECT, INCLUDING ALL SUBSEQUENT REVISIONS AND SUCH REVISED SPECIFICATIONS AND SPECIAL PROVISIONS AS ARE INCORPORATED IN THESE PLANS.

DIRECTOR OF PROGRAM DEVELOPMENT
APPROVED: *Pete Felton* DATE 1/29/08
PROJECT MANAGER : C. P. WILLIAMS
PROJECT NAME : READING
PROJECT NUMBER : BRZ 1444 (23)
SHEET 1 OF 49 SHEETS

PLOTTED 29-JAN-2008

REMOVE EXISTING SIGNS

STA. 14+14 LT.
STA. 14+54 LT.
STA. 14+75 RT.

TRAFFIC SIGNS, TYPE A
STA. 9+25 RT.

ERECTING SALVAGED SIGNS
STA. 14+75 RT.

HD STEEL BEAM GUARDRAIL, GALVANIZED

STA. 11+15 - 12+05 LT.
STA. 12+74 - 13+44 LT.
STA. 12+06 - 12+28 RT.
STA. 12+97 - 14+93 RT.
13+30

CONSTRUCT DRIVE
STA. 11+25 RT. 1 1/2" TYPE III PAVED DRIVE

BRIDGE RAILING - GALVANIZED HD STEEL BEAM/FASCIA MOUNTED

STA. 12+05 - 12+74 LT.
STA. 12+28 - 12+97 RT.

CONSTRUCT FIELD DRIVE WITH 6" AGGREGATE SURFACE COURSE

STA. 12+00 RT.
STA. 13+50 LT.

REMOVAL OF EXISTING FENCE

STA. 10+25 LT. - 12+30 RT.
STA. 12+91 RT. - 13+56 LT.

WOVEN WIRE FENCE WITH WOOD POSTS*

STA. 9+60 LT. - 11+25 LT.
STA. 12+55 LT. - 13+40 LT.

* FENCE SHALL BE BARBED WIRE AND SET ALONG NEW R.O.W. LINE

DRIVE GATE FOR WOVEN WIRE FENCE
STA. 13+40 LT. - 13+56 LT.

NEW OPTION PIPE W/END SECTION
10.064" CSP, 0.060" CAAP OR CPEP)

STA. 10+80 L - 18" X 48'
STA. 11+92 RT - STA. 12+22 RT - 18" X 32'

NEW OPTION PIPE
(0.064" CSP, 0.060" CAAP OR CPEP)
STA. 13+32 LT - STA. 13+60 LT - 18" X 30'

ANCHORS FOR STEEL BEAM GUARD RAIL

STA. 11+18 LT
STA. 13+41 LT
STA. 12+09 RT
STA. 14+91 RT
13+27

CURVE #1 DATA

Δ = 39°-25' - 10.67" Lf.
D = 19°
R = 301.557'
T = 108.03'
L = 207.47'
E = 18.77'
BANK = e(max) 0.040 FT/FT

CURVE #2 DATA

Δ = 43°-35' - 50.88" R+.
D = 19°
R = 301.557'
T = 120.61'
L = 229.46'
E = 23.22'
BANK = e(max) 0.040 FT/FT

LEGEND

- N - NEW
- R - REMOVE
- R&S - REMOVE & SALVAGE
- S - SALVAGE
- RET - RETAIN
- CONST - FOR USE DURING CONSTRUCTION THEN REMOVED

PLAN

SCALE 1" = 20'-0"

EXISTING BRIDGE INFO

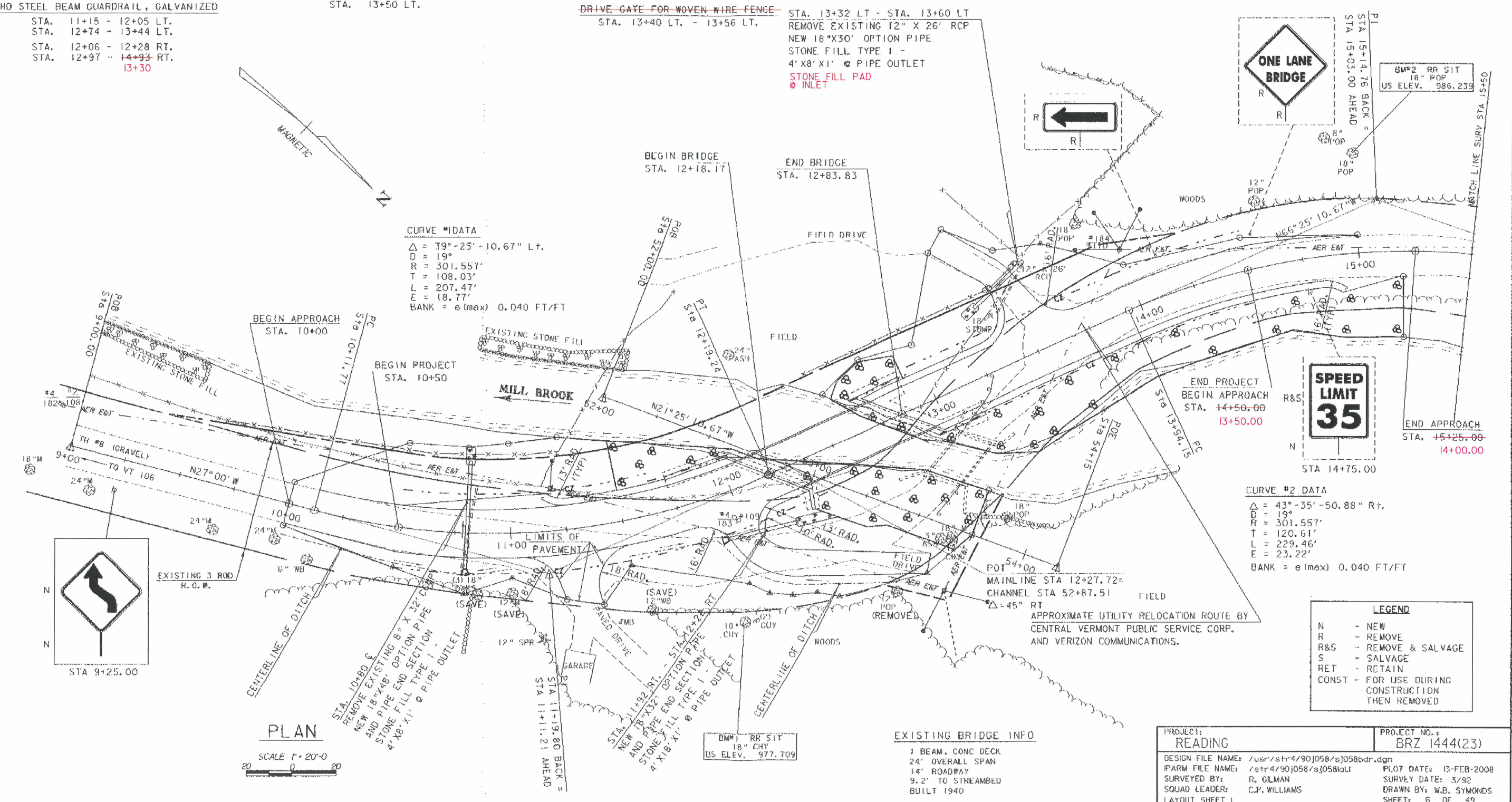
1 BEAM, CONC DECK
24' OVERALL SPAN
14' ROADWAY
9.2' TO STREAMBED
BUILT 1940

PROJECT: READING

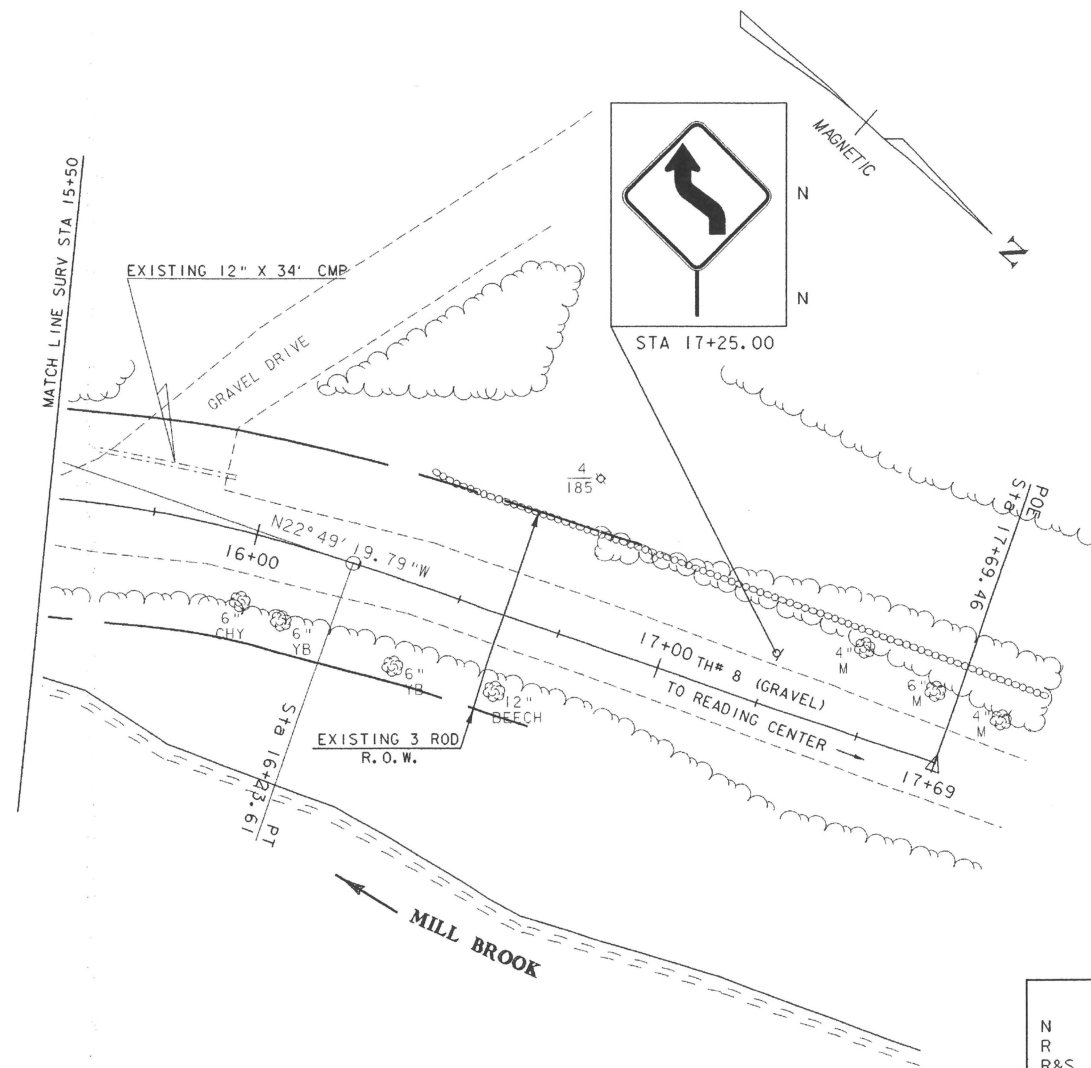
DESIGN FILE NAME: /usr/str4/90j058/sj058bdr.dgn
IPARM FILE NAME: /str4/90j058/sj058bdl
SURVEYED BY: R. GLMAN
SQUAD LEADER: C.P. WILLIAMS
LAYOUT SHEET 1

PROJECT NO.: BRZ 1444(23)

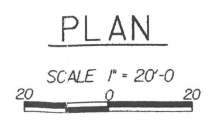
PLOT DATE: 13-FEB-2008
SURVEY DATE: 3/92
DRAWN BY: W.B. SYMONDS
SHEET: 6 OF 49



TRAFFIC SIGNS, TYPE A
 STA. 17+25 LT.



LEGEND	
N	- NEW
R	- REMOVE
R&S	- REMOVE & SALVAGE
S	- SALVAGE
RET	- RETAIN
CONST	- FOR USE DURING CONSTRUCTION THEN REMOVED



PROJECT: READING	PROJECT NO.: BRZ 1444(23)
DESIGN FILE NAME: /usr/str4/90j058/sj058bdr.dgn	PLOT DATE: 13-FEB-2008
IPARM FILE NAME: /str4/90j058/sj058ia2.i	SURVEY DATE: 3/92
SURVEYED BY: R. GILMAN	DRAWN BY: W.B. SYMONDS
SQUAD LEADER: C.P. WILLIAMS	SHEET: 7 OF 49
LAYOUT SHEET 2	