

**CERTIFICATE OF HIGHWAY MILEAGE
YEAR ENDING FEBRUARY 10, 2012**

Fill out form, make and file copy with the Town Clerk, and mail ORIGINAL, before February 20, 2012 to:
Vermont Agency of Transportation, Division of Policy, Planning and Intermodal Development,
One National Life Drive, Montpelier, VT 05633.

We, the members of the legislative body of **PLYMOUTH** in **WINDSOR** County
on an oath state that the mileage of highways, according to Vermont Statutes Annotated, Title 19, Section 305,
added 1985, is as follows:

PART I - CHANGES TOTALS - Please fill in and calculate totals.

Town Highways	Previous Mileage	Added Mileage	Subtracted Mileage	Total	Scenic Highways
Class 1	0.000				0.000
Class 2	3.720				0.000
Class 3	36.86 37.13	0.263		37.123	0.000 → 37.13
State Highway	14.488				0.000
Total	55.338				0.000
* Class 1 Lane	0.000				0.000
* Class 4	26.13		0.86 ^{0.27}	25.27	→ 25.90
* Legal Trail	1.16				
* Unidentified Corridor	0.00				

* Mileage for Class 1 Lane, Class 4, Legal Trail, and Unidentified Corridor classifications are NOT included in total.

PART II - INFORMATION AND DESCRIPTION OF CHANGES SHOWN ABOVE. Adjustments by

- NEW HIGHWAYS:** Please attach Selectmen's "Certificate of Completion and Opening". S. Moulton
4/11/2012
- DISCONTINUED:** Please attach SIGNED copy of proceedings (minutes of meeting).
See attached minutes and explanation/addendum
- RECLASSIFIED/REMEASURED:** Please attach SIGNED copy of proceedings (minutes of meeting).
See attached minutes and attached addendum.
- SCENIC HIGHWAYS:** Please attach a copy of order designating/discontinuing Scenic Highways.

IF THERE ARE NO CHANGES IN MILEAGE: Check box and sign below. []

PART III - SIGNATURES - PLEASE SIGN.

Selectmen/ Aldermen/ Trustees Signatures:

[Handwritten signatures]

T/C/V Clerk Signature: Barbara L. Rabtoy Date Filed: 3/13/12

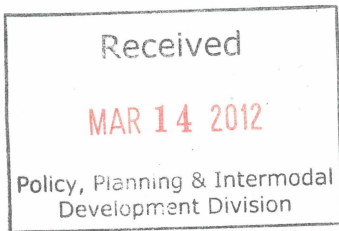
Please sign ORIGINAL and return it for Transportation signature.

AGENCY OF TRANSPORTATION APPROVAL: Signed copy will be returned to T/C/V Clerk.

APPROVED: *[Signature]*
Representative, Agency of Transportation

DATE: 6/25/2012

Jonathan Croft



Vermont Statutes Annotated

19 V.S.A. § 305. Measurement and inspection

§ 305. Measurement and inspection

(a) After reasonable notice to the selectboard, a representative of the agency may measure and inspect the class 1, 2, and 3 town highways in each town to verify the accuracy of the records on file with the agency. Upon request, the selectboard or their designee shall be permitted to accompany the representative of the agency during the measurement and inspection. The agency shall notify the town when any highway, or portion of a highway, does not meet the standards for its assigned class. If the town fails, within one year, to restore the highway or portion of the highway to the accepted standard, or to reclassify, or to discontinue, or develop an acceptable schedule for restoring to the accepted standards, the agency for purposes of apportionment under section 306 of this title shall deduct the affected mileage from that assigned to the town for the particular class of the road in question.

(b) Annually, on or before February 10, the selectboard shall file with the town clerk a sworn statement of the description and measurements of all class 1, 2, 3, and 4 town highways and trails then in existence, including any special designation such as a throughway or scenic highway. When class 1, 2, 3, or 4 town highways, trails, or unidentified corridors are accepted, discontinued, or reclassified, a copy of the proceedings shall be filed in the town clerk's office and a copy shall be forwarded to the agency.

(c) All class 1, 2, 3, and 4 town highways and trails shall appear on the town highway maps by July 1, 2015.

(d) At least 45 days prior to first including a town highway or trail that is not clearly observable by physical evidence of its use as a highway or trail and that is legally established prior to February 10, 2006 in the sworn statement required under subsection (b) of this section, the legislative body of the municipality shall provide written notice and an opportunity to be heard at a duly warned meeting of the legislative body to persons owning lands through which a highway or trail passes or abuts.

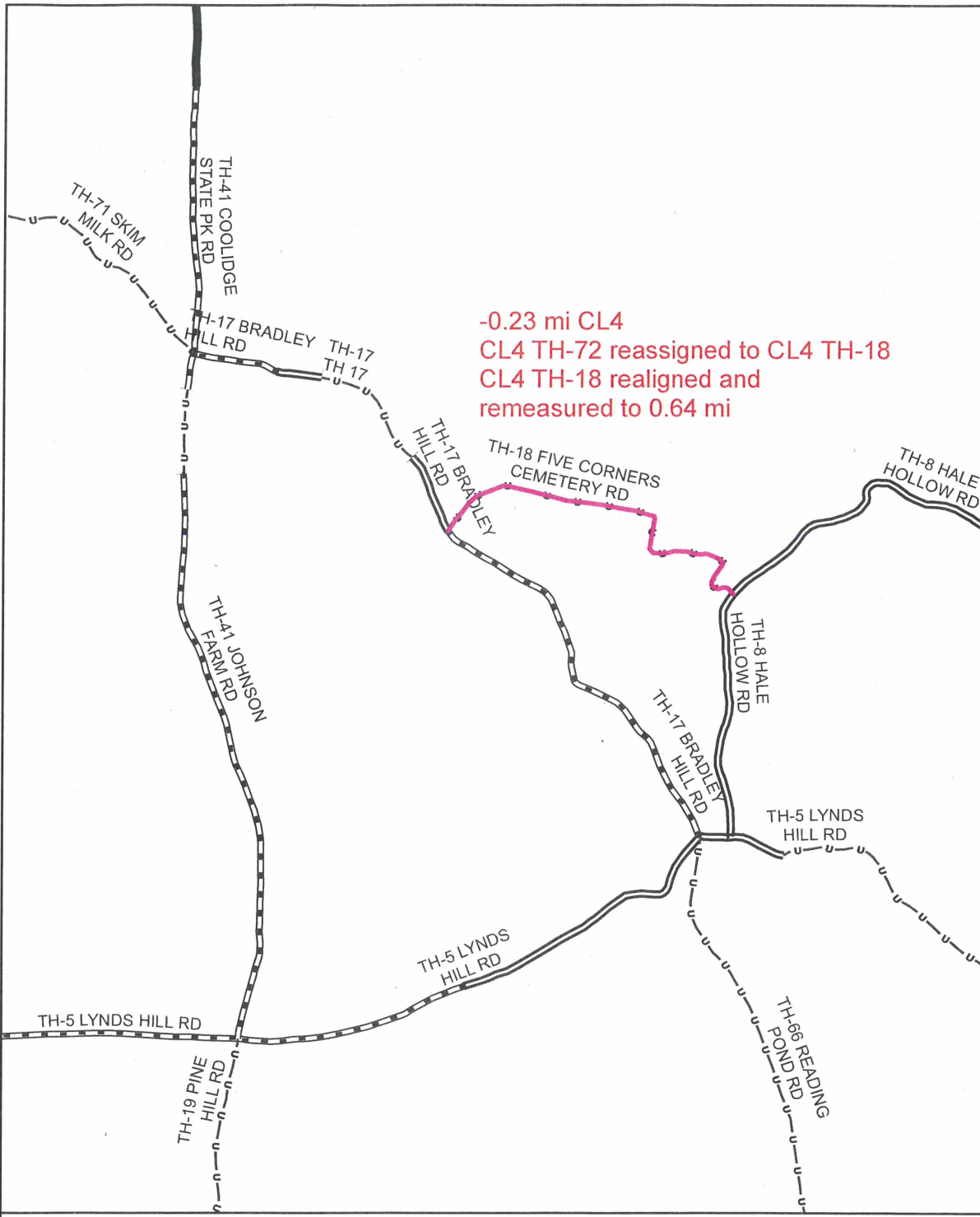
(e) The agency shall not accept any change in mileage until the records required to be filed in the town clerk's office by this section are received by the agency. A request by a municipality to the agency for a change in mileage shall include a description of the affected highway or trail, a copy of any surveys of the affected highway or trail, minutes of meetings at which the legislative body took action with respect to the changes, and a current town highway map with the requested deletions and additions sketched on it. A survey shall not be required for class 4 town highways that are legally established prior to February 10, 2006. All records filed with the agency are subject to verification in accordance with subsection (a) of this section.

(f) The selectboard of any town who are aggrieved by a finding of the agency concerning the measurement, description or classification of a town highway may appeal to the transportation board by filing a notice of appeal with the executive secretary of the transportation board.

(g) The agency shall provide each town with a map of all of the highways in that town together with the mileage of each class 1, 2, 3, and 4 highway, as well as each trail, and such other information as the agency deems appropriate.

Excerpt of 19 V.S.A. § 305 - *Measurement and inspection* from Vermont Statutes Online located at –
<http://www.leg.state.vt.us/statutes/fullsection.cfm?Title=19&Chapter=003&Section=00305>

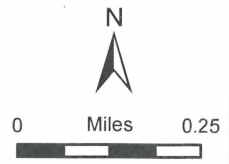
12/20/2010

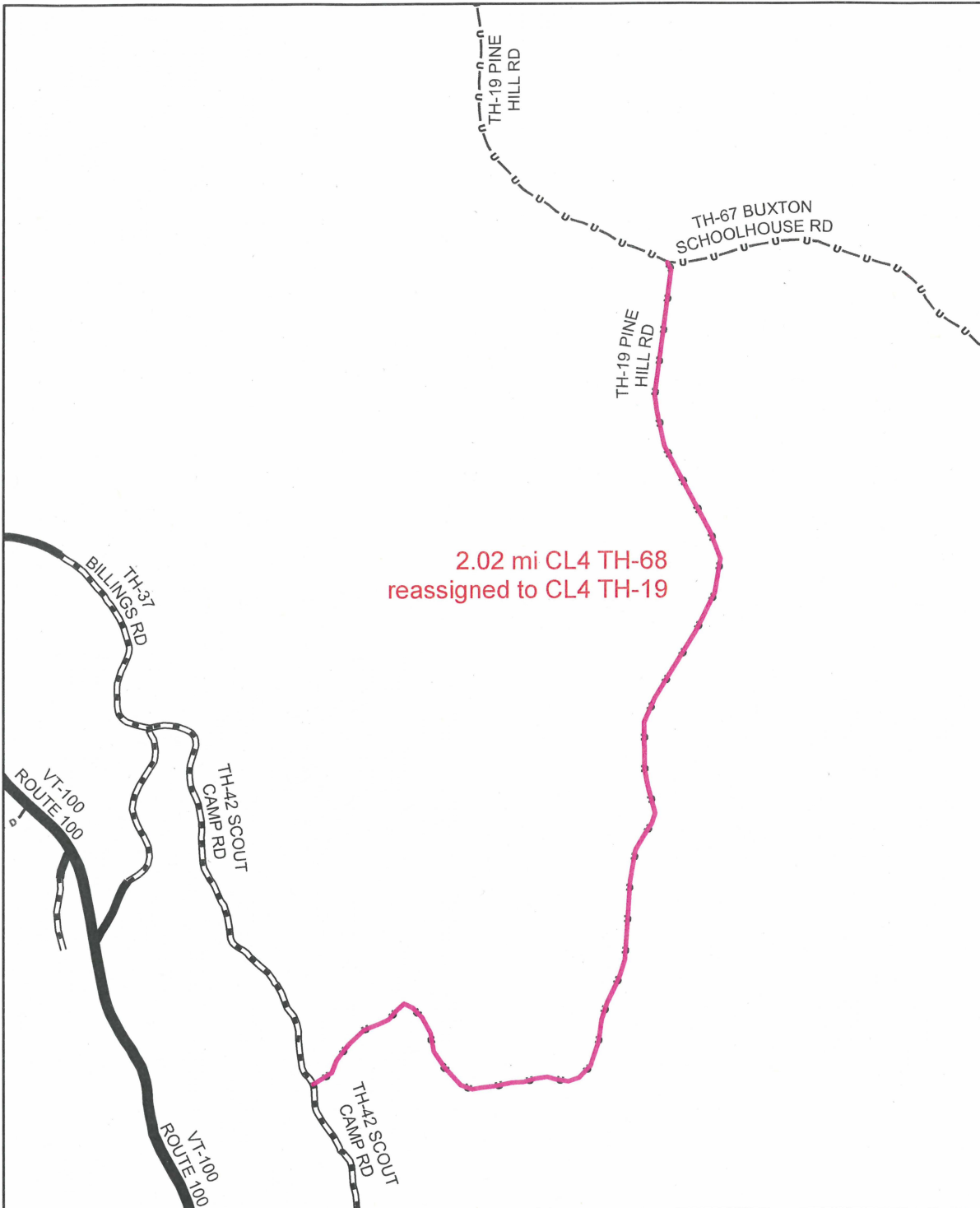


-0.23 mi CL4
 CL4 TH-72 reassigned to CL4 TH-18
 CL4 TH-18 realigned and
 remeasured to 0.64 mi

**Mileage Certificate Change 2012
 PLYMOUTH**

Mapping Unit
 Division of Policy and Planning
 Vermont Agency of Transportation -- April 2012

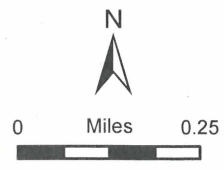




2.02 mi CL4 TH-68
reassigned to CL4 TH-19

Mileage Certificate Change 2012 PLYMOUTH

Mapping Unit
Division of Policy and Planning
Vermont Agency of Transportation -- April 2012



Moulton, Sara

From: rtonks@aol.com
Sent: Tuesday, October 16, 2012 2:18 PM
To: Moulton, Sara
Cc: ralph@michael-engineering.com
Subject: 2012 Plymouth map

Sara
As previously mentioned, there are several road naming errors and short sections with errors which were not understood by Vtrans with our Feb COM. I was hoping to get together with you and possibly our road foreman to explain these errors so we can get them corrected in 2013. What would be the best way for this to happen? My thoughts are that you might need to see the actual road and then would understand why we are requesting changes. Could you come to Plymouth?

Thank you for your help.

Russ Tonkin
Plymouth Selectman

Moulton, Sara

From: rtonks@aol.com
Sent: Thursday, April 05, 2012 3:56 PM
To: Moulton, Sara
Subject: Re: Plymouth cert of mileage

Sara
Thank you for your response. I will mark on my calander to email you after 1 July to set up a work session for help with resolving further issues with the map. In the mean time we will work on deficiencies.

Russ Tonkin
Plymouth
-----Original Message-----
From: Moulton, Sara <Sara.Moulton@state.vt.us>
To: 'rtonks@aol.com' <rtonks@aol.com>
Cc: Croft, Johnathan <Johnathan.Croft@state.vt.us>
Sent: Thu, Apr 5, 2012 11:03 am
Subject: RE: Plymouth cert of mileage

I am in the process of closing the Mileage Certificate process for 2012, and won't be able to come down for a visit before completing the process for this year. I could come down later in the year for a follow up visit to see if I can help you prepare for next year's Mileage Certificate.

We could schedule for sometime after July 1st if you still have questions at that time. In the meantime, I will process the changes as summarized in my letter.

Sara Moulton, GISP
Mapping & GIS Specialist, Mapping Unit
Division of Policy and Planning
Vermont Agency of Transportation (VTTrans)
Tel: 802-828-2109

From: rtonks@aol.com [<mailto:rtonks@aol.com>]
Sent: Monday, April 02, 2012 4:25 PM
To: Moulton, Sara
Subject: Plymouth cert of mileage

Sara
Thank you for your recent letter. There obviously are a number of issues which need to be clarified which would be difficult in letters. Is it possible for you to visit Plymouth some afternoon? We could meet with the road forman and explain the issues and then make a list of what exactly needs to be done??

Thanks

Russ Tonkin
Selectman
Plymouth

Moulton, Sara

From: Croft, Johnathan
Sent: Monday, March 26, 2012 9:33 AM
To: 'ajschulz@optonline.net'
Subject: Plymouth 2011 Mileage Certificate & LT-2 documentation

Good morning Mr. Schulz,

Please find attached the 2011 Mileage Certificate from Plymouth and documentation from the 2009 Mileage Certificate submittal pertinent to LT-2.

Please feel free to contact me with any questions or comments regarding the Mileage Certificate or mapping in general.

Johnathan Croft
VTrans Mapping Unit

(802) 828-2600

State of Vermont**Division of Policy, Planning and Intermodal Development - Mapping Unit**

1 National Life Drive

Montpelier, VT 05633-5001

<http://www.aot.state.vt.us>

Telephone: 802-828-2109

Fax: 802-828-2334

Email: sara.moulton@state.vt.us**Agency of Transportation**

March 22, 2012

Chair, Selectboard
Plymouth, c/o Town Clerk
68 Town Office Rd
Plymouth, VT 05056

Dear Town Clerk and Selectboard Chair:

The Vermont Agency of Transportation Mapping Unit has received and reviewed Plymouth's 2012 Certificate of Highway Mileage. Among the changes requested are numerous town highway numbering changes. It is the policy of the VTrans Mapping Unit to not renumber town highways unless the renumbering has been reviewed and approved by the Selectboard. There are many legal documents that use the highway numbers (deeds, classification changes, etc.). Although not required by statute, we recommend that if the Selectboard is intent on renumbering town highways, it should follow the reclassification process outlined in statute and submit documentation indicating that the Selectboard has discussed and approved the renumbering being requested.

We will also request documentation that confirms that the Selectboard coordinated the renumbering with the E911 Board to make sure that the renumbering is based on the most current and official road names.

The following documentation is what we typically request as part of the V.S.A. Title 19, § 709. Notice and hearing process.

- copies of the Selectboard's minutes of the meetings at which the Selectboard took action on these reclassifications,
- a copy of the notice that was sent to the abutting landowners via certified mail,
- a copy of the notice that was sent to the local newspaper including the name of the newspaper, and
- a copy of the minutes of the site visit.

The Vermont Statutes Annotated can be referred to online at this address:

<http://www.leg.state.vt.us/statutes/sections.cfm?Title=19&Chapter=007>

Another resource that might be helpful is "The 'Orange Book' a Handbook for Local Officials" available online at http://www.aot.state.vt.us/ops/documents/AOT-OPS_OrangeBook.pdf.

I have reviewed the changes submitted with Plymouth's 2012 Mileage Certificate. The details are itemized below.

TOWN HIGHWAY	REMARKS
TH-5	Plymouth TH 5 does not continue past TH 8. This is a new road and has been numbered TH 51.
	VTrans Response The 1.10-mile section of TH-5 that continues past TH-8 has been on the map since 1974 when the current classification scheme was implemented. A 0.31-mile section was added in 2011. TH-51 is a previously used number referring to a road between Amherst Lake and Echo Lake that was Discontinued in 2009. We will not renumber TH-5 east of TH-8.
TH-14	Plymouth TH 14 (0.193 cl3) should be added which comes off Rt 100A (existed on previous map)
	VTrans Response TH-14 was discontinued in 1987 It comes off TH-5 about 0.53 miles south of the intersection of TH-5 with VT-100A We will not re-add this without documentation demonstrating that there has been legal establishment of a new highway on this alignment.
TH-15	Plymouth TH 15 continues to the intersection of TH 21, TH 43 and TH 23. It does not continue along "Patch Brook"
	VTrans Response This is a renumbering situation, the alignment of TH-15 has been in place since 1974. We will not implement this renumbering.
TH-17	Plymouth TH 17 continues through the Coolidge State Forest (not TH 41)
	VTrans Response This is a renumbering situation, this section of town highway has been numbered TH-14 since 1974. We will not implement this renumbering.
TH 18	Plymouth TH 18 should be shown as drawn in green. The short section, 0.23m, that continues into the state forest was a logging skid and should be deleted.
TH-18 CL4 = 0.64 mi / TH-72 CL4 = 0.00 mi	VTrans Response The alignment for TH-18/TH-72 has been corrected. It results in the elimination of TH-72 and a total mileage of 0.64 for TH-18.
TH-19	Plymouth TH 19 extends from TH 5 to TH 42
TH-19 CL4 = 3.02 mi / TH-68 CL4 = 0.00	VTrans Response This includes TH-68 that was added in 2011. The documentation submitted by the town in 2009-2011 ties TH-68 with the existing TH-19. Since this is a newly assigned town highway number, we will consider this change to be an error correction and assign this portion of town highway to TH-19.
TH-23	Plymouth The class 3 mileage listed on the current map is incorrect and should have been 1.07
	VTrans Response I'm not sure where you are referring to. More documentation and detail is needed regarding this issue.
TH-25	Plymouth The road along Patch Brook should be TH 25. The 1 mi section after TH 25 turns left should be new number TH 53

TOWN HIGHWAY	REMARKS
	<p>VTrans Response This is a renumbering situation, the alignment of TH-25 has been in place since 1974. TH-53 is a previously used number referring to a road of TH-8 between TH-39 and the Bridgewater town line that was Discontinued in 1990.</p> <p>We will not implement this renumbering.</p>
TH-27	<p>Plymouth TH 65 is an extension of TH 27.</p>
	<p>VTrans Response Based on the documentation supplied by the town 2009-2011, it might be possible to consider TH-66 (rather than 65) as an extension of TH-27 although it isn't as strongly supported as the merging of TH-68 into TH-19 noted above.</p> <p>Since this is a newly assigned town highway number, we can consider making this change upon further communication with the town.</p>
TH-39	<p>Plymouth TH 70 is an extension of TH 39 and the 0.15 spur is a drive not a town road.</p>
	<p>VTrans Response In November 2010 I wrote to the town asking for clarification on the alignment of TH-39 and TH-70 (copy enclosed). I did not receive a response from the town at the time.</p> <p>I am still unsure of the alignment (see enclosed map titled "TH-39 / TH-39 Extension"). Does the eastern portion of the road generally follow the parcel boundary (Alignment A) or does it follow the LT7 Survey (Alignment B).</p> <p>Please review the enclosed map of the alignments and provide clarification.</p>
TH-41	<p>Plymouth The short section of TH41, 0.14m (class 4) had been upgraded to class 3 (previously submitted)</p>
	<p>VTrans Response In reviewing the Mileage Certificates for the past five years, it looks like Plymouth submitted a request to reclassify the 0.14 Class 4 portion of TH-41 to Class 3. In a letter dated February 2, 2009, my supervisor, Johnathan Croft, responded, "Before I can continue processing the Mileage Certificate, I need the proper documentation for the reclassification of TH-41 ...". In reviewing our files, I am unable to find that the documentation was submitted.</p> <p>In a letter written by Jim Allen, Plymouth Selectboard Chair, dated March 11, 2009, he states "I believe Peter [Fellows] has already submitted documentation for the discontinuance of TH-51 (Amherst Rd) and is working on TH-41 (Johnson's Farm Rd)."</p> <p>We have not received the documentation. If a copy of the appropriate reclassification documentation is supplied, we can process this reclassification.</p>
TH-41	<p>Plymouth The 0.07m spur in Coolidge State Park should be eliminated.</p>
	<p>VTrans Response The 0.07-mile spur has been eliminated. There is no change in mileage. Mileage on the adjacent section of town highway is distributed more correctly.</p>
TH-51	<p>Plymouth TH 51 should be added at the end of TH 5 (exists on map as TH 5)</p>
	<p>VTrans Response See TH-5 above, TH-51 has been discontinued and this number will not be reused.</p>
TH-53	<p>Plymouth TH 53 should be added at the end of TH 25 (was TH 15)</p>
	<p>VTrans Response See TH-25 above</p>
TH-65	<p>Plymouth TH 65 is an extension of TH 27</p>
	<p>VTrans Response See TH-27 above</p>

TOWN HIGHWAY	REMARKS
TH-68	Plymouth TH 19 extends from TH 5 to TH 42 [covers TH-68]
	VTrans Response change processed - see TH-19 above
TH-70	See TH-39 above
TH-73	Plymouth TH 73 ends at a property line 1.00 mi from Rt 100. It does not continue to TH 5 (this was submitted with GPS data previously)
	VTrans Response Two of the maps (on a USGS base, copies enclosed) submitted with the original 2009 request show this road extending from VT-100 to TH-5. The distance calculated at 1.34 miles. It was this mileage that the Selectboard approved as part of the 2011 Certificate process. In order to implement this change, I will need to have a copy of the minutes in which the Selectboard reviewed and approved the reduction in mileage from 1.34 to 1.00.

The following table summarizes the mileage changes prompted by the review of the 2012 Certificate of Highway Mileage.

TOWN HIGHWAY	2011 Mileage	New Mileage based on above changes	Difference	Difference Subtotal
TH-18	0.34	0.64	+0.30	
TH-72	0.53	0.00	-0.53	-0.23
TH-19	1.00	3.02	+2.02	
TH-68	2.02	0.00	-2.02	0.00 (no mileage change)
TH-39/TH-70 changes pending clarification of alignment				
TH-39	0.47	0.47	0.00	
TH-70	0.40	0.21	-0.19	-0.19
			TOTAL	-0.42 miles Class 4

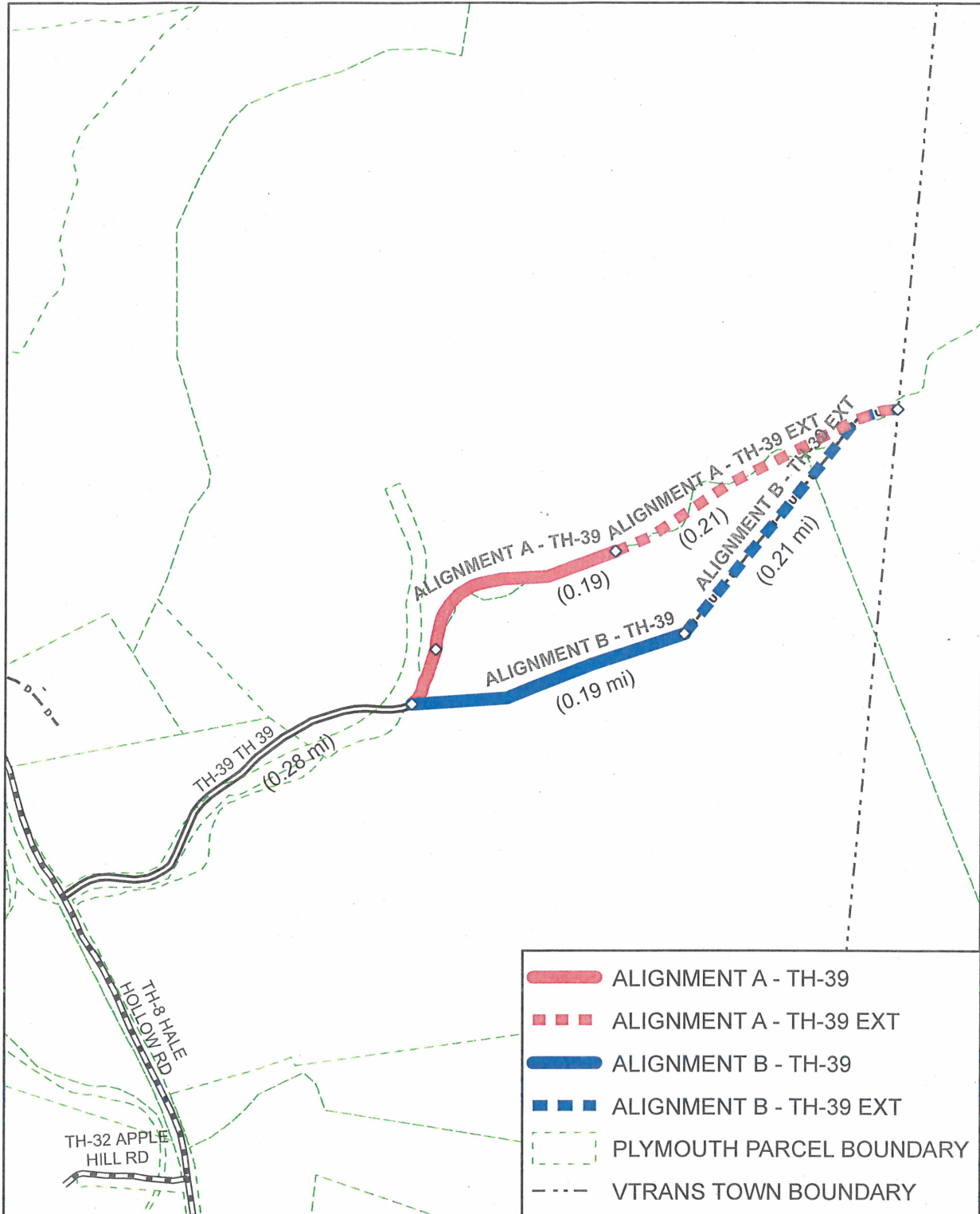
I am starting to close the 2012 Certificate review process, but can continue to work with the town during the remainder of the year on any of the issues that are not resolved by the time the process is closed for 2012.

Please let me know if you have any questions.

Thank you.

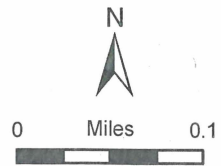
Sincerely,

Sara Moulton
Mapping & GIS Specialist



**TH-39 / TH-39 EXTENSION
Plymouth, Vermont**

Mapping Unit
 Division of Policy and Planning
 Vermont Agency of Transportation -- March 2012





State of Vermont
Division of Policy, Planning and Intermodal Development - Mapping Unit

1 National Life Drive
Montpelier, VT 05633-5001
<http://www.aot.state.vt.us>

Telephone: 802-828-2109
Fax: 802-828-2334
Email: sara.moulton@state.vt.us

Agency of Transportation

March 22, 2012

Chair, Selectboard
Plymouth, c/o Town Clerk
68 Town Office Rd
Plymouth, VT 05056

Dear Town Clerk and Selectboard Chair:

The Vermont Agency of Transportation Mapping Unit has received and reviewed Plymouth's 2012 Certificate of Highway Mileage. Among the changes requested are numerous town highway numbering changes. It is the policy of the VTrans Mapping Unit to not renumber town highways unless the renumbering has been reviewed and approved by the Selectboard. There are many legal documents that use the highway numbers (deeds, classification changes, etc.). Although not required by statute, we recommend that if the Selectboard is intent on renumbering town highways, it should follow the reclassification process outlined in statute and submit documentation indicating that the Selectboard has discussed and approved the renumbering being requested.

We will also request documentation that confirms that the Selectboard coordinated the renumbering with the E911 Board to make sure that the renumbering is based on the most current and official road names.

The following documentation is what we typically request as part of the V.S.A. Title 19, § 709. Notice and hearing process.

- copies of the Selectboard's minutes of the meetings at which the Selectboard took action on these reclassifications,
- a copy of the notice that was sent to the abutting landowners via certified mail,
- a copy of the notice that was sent to the local newspaper including the name of the newspaper, and
- a copy of the minutes of the site visit.

The Vermont Statutes Annotated can be referred to online at this address:
<http://www.leg.state.vt.us/statutes/sections.cfm?Title=19&Chapter=007>

Another resource that might be helpful is "The 'Orange Book' a Handbook for Local Officials" available online at http://www.aot.state.vt.us/ops/documents/AOT-OPS_OrangeBook.pdf.

I have reviewed the changes submitted with Plymouth's 2012 Mileage Certificate. The details are itemized below.

TOWN HIGHWAY	REMARKS
TH-5	Plymouth TH 5 does not continue past TH 8. This is a new road and has been numbered TH 51.
	VTrans Response The 1.10-mile section of TH-5 that continues past TH-8 has been on the map since 1974 when the current classification scheme was implemented. A 0.31-mile section was added in 2011. TH-51 is a previously used number referring to a road between Amherst Lake and Echo Lake that was Discontinued in 2009. We will not renumber TH-5 east of TH-8.
TH-14	Plymouth TH 14 (0.193 cl3) should be added which comes off Rt 100A (existed on previous map)
	VTrans Response TH-14 was discontinued in 1987 It comes off TH-5 about 0.53 miles south of the intersection of TH-5 with VT-100A We will not re-add this without documentation demonstrating that there has been legal establishment of a new highway on this alignment.
TH-15	Plymouth TH 15 continues to the intersection of TH 21, TH 43 and TH 23. It does not continue along "Patch Brook"
	VTrans Response This is a renumbering situation, the alignment of TH-15 has been in place since 1974. We will not implement this renumbering.
TH-17	Plymouth TH 17 continues through the Coolidge State Forest (not TH 41)
	VTrans Response This is a renumbering situation, this section of town highway has been numbered TH-14 since 1974. We will not implement this renumbering.
TH 18	Plymouth TH 18 should be shown as drawn in green. The short section, 0.23m, that continues into the state forest was a logging skid and should be deleted.
TH-18 CL4 = 0.64 mi / TH-72 CL4 = 0.00 mi	VTrans Response The alignment for TH-18/TH-72 has been corrected. It results in the elimination of TH-72 and a total mileage of 0.64 for TH-18.
TH-19	Plymouth TH 19 extends from TH 5 to TH 42
TH-19 CL4 = 3.02 mi / TH-68 CL4 = 0.00	VTrans Response This includes TH-68 that was added in 2011. The documentation submitted by the town in 2009-2011 ties TH-68 with the existing TH-19. Since this is a newly assigned town highway number, we will consider this change to be an error correction and assign this portion of town highway to TH-19.
TH-23	Plymouth The class 3 mileage listed on the current map is incorrect and should have been 1.07
	VTrans Response I'm not sure where you are referring to. More documentation and detail is needed regarding this issue.
TH-25	Plymouth The road along Patch Brook should be TH 25. The 1 mi section after TH 25 turns left should be new number TH 53

TOWN HIGHWAY	REMARKS
	<p>VTrans Response</p> <p>This is a renumbering situation, the alignment of TH-25 has been in place since 1974. TH-53 is a previously used number referring to a road of TH-8 between TH-39 and the Bridgewater town line that was Discontinued in 1990.</p> <p>We will not implement this renumbering.</p>
TH-27	<p>Plymouth</p> <p>TH 65 is an extension of TH 27.</p>
	<p>VTrans Response</p> <p>Based on the documentation supplied by the town 2009-2011, it might be possible to consider TH-66 (rather than 65) as an extension of TH-27 although it isn't as strongly supported as the merging of TH-68 into TH-19 noted above.</p> <p>Since this is a newly assigned town highway number, we can consider making this change upon further communication with the town.</p>
TH-39	<p>Plymouth</p> <p>TH 70 is an extension of TH 39 and the 0.15 spur is a drive not a town road.</p>
	<p>VTrans Response</p> <p>In November 2010 I wrote to the town asking for clarification on the alignment of TH-39 and TH-70 (copy enclosed). I did not receive a response from the town at the time.</p> <p>I am still unsure of the alignment (see enclosed map titled "TH-39 / TH-39 Extension"). Does the eastern portion of the road generally follow the parcel boundary (Alignment A) or does it follow the LT7 Survey (Alignment B).</p> <p>Please review the enclosed map of the alignments and provide clarification.</p>
TH-41	<p>Plymouth</p> <p>The short section of TH41, 0.14m (class 4) had been upgraded to class 3 (previously submitted)</p>
	<p>VTrans Response</p> <p>In reviewing the Mileage Certificates for the past five years, it looks like Plymouth submitted a request to reclassify the 0.14 Class 4 portion of TH-41 to Class 3. In a letter dated February 2, 2009, my supervisor, Johnathan Croft, responded, "Before I can continue processing the Mileage Certificate, I need the proper documentation for the reclassification of TH-41 ..." In reviewing our files, I am unable to find that the documentation was submitted.</p> <p>In a letter written by Jim Allen, Plymouth Selectboard Chair, dated March 11, 2009, he states "I believe Peter [Fellows] has already submitted documentation for the discontinuance of TH-51 (Amherst Rd) and is working on TH-41 (Johnson's Farm Rd)."</p> <p>We have not received the documentation. If a copy of the appropriate reclassification documentation is supplied, we can process this reclassification.</p>
TH-41	<p>Plymouth</p> <p>The 0.07m spur in Coolidge State Park should be eliminated.</p>
	<p>VTrans Response</p> <p>The 0.07-mile spur has been eliminated. There is no change in mileage. Mileage on the adjacent section of town highway is distributed more correctly.</p>
TH-51	<p>Plymouth</p> <p>TH 51 should be added at the end of TH 5 (exists on map as TH 5)</p>
	<p>VTrans Response</p> <p>See TH-5 above, TH-51 has been discontinued and this number will not be reused.</p>
TH-53	<p>Plymouth</p> <p>TH 53 should be added at the end of TH 25 (was TH 15)</p>
	<p>VTrans Response</p> <p>See TH-25 above</p>
TH-65	<p>Plymouth</p> <p>TH 65 is an extension of TH 27</p>
	<p>VTrans Response</p> <p>See TH-27 above</p>

TOWN HIGHWAY	REMARKS
TH-68	Plymouth TH 19 extends from TH 5 to TH 42 [covers TH-68]
	VTrans Response change processed - see TH-19 above
TH-70	See TH-39 above
TH-73	Plymouth TH 73 ends at a property line 1.00 mi from Rt 100. It does not continue to TH 5 (this was submitted with GPS data previously)
	VTrans Response Two of the maps (on a USGS base, copies enclosed) submitted with the original 2009 request show this road extending from VT-100 to TH-5. The distance calculated at 1.34 miles. It was this mileage that the Selectboard approved as part of the 2011 Certificate process. In order to implement this change, I will need to have a copy of the minutes in which the Selectboard reviewed and approved the reduction in mileage from 1.34 to 1.00.

The following table summarizes the mileage changes prompted by the review of the 2012 Certificate of Highway Mileage.

TOWN HIGHWAY	2011 Mileage	New Mileage based on above changes	Difference	Difference Subtotal
TH-18	0.34	0.64	+0.30	
TH-72	0.53	0.00	-0.53	-0.23
TH-19	1.00	3.02	+2.02	
TH-68	2.02	0.00	-2.02	0.00 (no mileage change)
TH-39/TH-70 changes pending clarification of alignment				
TH-39	0.47	0.47	0.00	
TH-70	0.40	0.21	-0.19	-0.19
			TOTAL	-0.42 miles Class 4

I am starting to close the 2012 Certificate review process, but can continue to work with the town during the remainder of the year on any of the issues that are not resolved by the time the process is closed for 2012.

Please let me know if you have any questions.

Thank you.

Sincerely,

Sara Moulton

Sara Moulton
Mapping & GIS Specialist

PLYMOUTH 2012 MILEAGE CERTIFICATE REVIEW NOTES
 Sara Moulton, Mapping and GIS Specialist
 21-22 March 2012

It is the policy of the VTrans Mapping Unit to not renumber town highways unless the renumbering has been reviewed and approved by the Selectboard. There are many legal documents that use the highway numbers (deeds, classification changes, etc.). Although not required by statute, we recommend that if the Selectboard is intent on renumbering town highways, it should follow the reclassification process outlined in statute and submit documentation indicating that the Selectboard has discussed and approved the renumbering being requested.

We will also request documentation that confirms that the Selectboard coordinated the renumbering with the E911 Board to make sure that the renumbering is based on the most current and official road names.

The following documentation is what we typically request as part of the V.S.A. Title 19, § 709. Notice and hearing process.

- copies of the Selectboard's minutes of the meetings at which the Selectboard took action on these reclassifications,
- a copy of the notice that was sent to the abutting landowners via certified mail,
- a copy of the notice that was sent to the local newspaper including the name of the newspaper, and
- a copy of the minutes of the site visit.

The Vermont Statutes Annotated can be referred to online at this address:
<http://www.leg.state.vt.us/statutes/sections.cfm?Title=19&Chapter=007>

Another resource that might be helpful is "The 'Orange Book' a Handbook for Local Officials" available online at http://www.aot.state.vt.us/ops/documents/AOT-OPS_OrangeBook.pdf.

I have reviewed the changes submitted with Plymouth's 2012 Mileage Certificate. The details are itemized below.

TOWN HIGHWAY	REMARKS
TH-5	Plymouth TH 5 does not continue past TH 8. This is a new road and has been numbered TH 51.
	VTrans Response The 1.10-mile section of TH-5 that continues past TH-8 has been on the map since 1974 when the current classification scheme was implemented. A 0.31-mile section was added in 2011. TH-51 is a previously used number referring to a road between Amherst Lake and Echo Lake that was Discontinued in 2009. We will not renumber TH-5 east of TH-8.
TH-14	Plymouth TH 14 (0.193 cl3) should be added which comes off Rt 100A (existed on previous map)

TOWN HIGHWAY	REMARKS
	<p>VTrans Response TH-14 was discontinued in 1987 It comes off TH-5 about 0.53 miles south of the intersection of TH-5 with VT-100A</p> <p>We will not re-add this without documentation demonstrating that there has been legal establishment of a new highway on this alignment.</p>
TH-15	<p>Plymouth TH 15 continues to the intersection of TH 21, TH 43 and TH 23. It does not continue along "Patch Brook"</p>
	<p>VTrans Response This is a renumbering situation, the alignment of TH-15 has been in place since 1974. We will not implement this renumbering.</p>
TH-17	<p>Plymouth TH 17 continues through the Coolidge State Forest (not TH 41)</p>
	<p>VTrans Response This is a renumbering situation, this section of town highway has been numbered TH-14 since 1974. We will not implement this renumbering.</p>
TH 18	<p>Plymouth TH 18 should be shown as drawn in green. The short section, 0.23m, that continues into the state forest was a logging skid and should be deleted.</p>
TH-18 CL4 = 0.64 mi / TH-72 CL4 = 0.00 mi	<p>VTrans Response The alignment for TH-18/TH-72 has been corrected. It results in the elimination of TH-72 and a total mileage of 0.64 for TH-18.</p>
TH-19	<p>Plymouth TH 19 extends from TH 5 to TH 42</p>
TH-19 CL4 = 3.02 mi / TH-68 CL4 = 0.00	<p>VTrans Response This includes TH-68 that was added in 2011. The documentation submitted by the town in 2009-2011 ties TH-68 with the existing TH-19. Since this is a newly assigned town highway number, we will consider this change to be an error correction and assign this portion of town highway to TH-19.</p>
TH-23	<p>Plymouth The class 3 mileage listed on the current map is incorrect and should have been 1.07</p>
	<p>VTrans Response I'm not sure where you are referring to. More documentation and detail is needed regarding this issue.</p>
TH-25	<p>Plymouth The road along Patch Brook should be TH 25. The 1 mi section after TH 25 turns left should be new number TH 53</p>
	<p>VTrans Response This is a renumbering situation, the alignment of TH-25 has been in place since 1974. TH-53 is a previously used number referring to a road of TH-8 between TH-39 and the Bridgewater town line that was Discontinued in 1990.</p> <p>We will not implement this renumbering.</p>
TH-27	<p>Plymouth TH 65 is an extension of TH 27.</p>

TOWN HIGHWAY	REMARKS
	<p>VTrans Response Based on the documentation supplied by the town 2009-2011, it might be possible to consider TH-66 (rather than 65) as an extension of TH-27 although it isn't as strongly supported as the merging of TH-68 into TH-19 noted above.</p> <p>Since this is a newly assigned town highway number, we can consider making this change upon further communication with the town.</p>
TH-39	<p>Plymouth TH 70 is an extension of TH 39 and the 0.15 spur is a drive not a town road.</p>
	<p>VTrans Response In November 2010 I wrote to the town asking for clarification on the alignment of TH-39 and TH-70 (copy enclosed). I did not receive a response from the town at the time.</p> <p>I am still unsure of the alignment (see enclosed map titled "TH-39 / TH-39 Extension"). Does the eastern portion of the road generally follow the parcel boundary (Alignment A) or does it follow the LT7 Survey (Alignment B).</p> <p>Please review the enclosed map of the alignments and provide clarification.</p>
TH-41	<p>Plymouth The short section of TH41, 0.14m (class 4) had been upgraded to class 3 (previously submitted)</p>
	<p>VTrans Response In reviewing the Mileage Certificates for the past five years, it looks like Plymouth submitted a request to reclassify the 0.14 Class 4 portion of TH-41 to Class 3. In a letter dated February 2, 2009, my supervisor, Johnathan Croft, responded, "Before I can continue processing the Mileage Certificate, I need the proper documentation for the reclassification of TH-41 ..." In reviewing our files, I am unable to find that the documentation was submitted.</p> <p>In a letter written by Jim Allen, Plymouth Selectboard Chair, dated March 11, 2009, he states "I believe Peter [Fellows] has already submitted documentation for the discontinuance of TH-51 (Amherst Rd) and is working on TH-41 (Johnson's Farm Rd)."</p> <p>We have not received the documentation. If a copy of the appropriate reclassification documentation is supplied, we can process this reclassification.</p>
TH-41	<p>Plymouth The 0.07m spur in Coolidge State Park should be eliminated.</p>
	<p>VTrans Response The 0.07-mile spur has been eliminated. There is no change in mileage. Mileage on the adjacent section of town highway is distributed more correctly.</p>
TH-51	<p>Plymouth TH 51 should be added at the end of TH 5 (exists on map as TH 5)</p>
	<p>VTrans Response See TH-5 above, TH-51 has been discontinued and this number will not be reused.</p>
TH-53	<p>Plymouth TH 53 should be added at the end of TH 25 (was TH 15)</p>
	<p>VTrans Response See TH-25 above</p>
TH-65	<p>Plymouth TH 65 is an extension of TH 27</p>
	<p>VTrans Response See TH-27 above</p>
TH-68	<p>Plymouth TH 19 extends from TH 5 to TH 42 [covers TH-68]</p>

TOWN HIGHWAY	REMARKS
	VTrans Response change processed - see TH-19 above
TH-70	See TH-39 above
TH-73	Plymouth TH 73 ends at a property line 1.00 mi from Rt 100. It does not continue to TH 5 (this was submitted with GPS data previously)
	VTrans Response Two of the maps (on a USGS base, copies enclosed) submitted with the original 2009 request show this road extending from VT-100 to TH-5. The distance calculated at 1.34 miles. It was this mileage that the Selectboard approved as part of the 2011 Certificate process. In order to implement this change, I will need to have a copy of the minutes in which the Selectboard reviewed and approved the reduction in mileage from 1.34 to 1.00.

The following table summarizes the mileage changes prompted by the review of the 2012 Certificate of Highway Mileage.

TOWN HIGHWAY	2011 Mileage	New Mileage based on above changes	Difference	Difference Subtotal
TH-18	0.34	0.64	+0.30	
TH-72	0.53	0.00	-0.53	-0.23
TH-19	1.00	3.02	+2.02	
TH-68	2.02	0.00	-2.02	0.00 (no mileage change)
TH-39/TH-70 changes pending clarification of alignment				
TH-39	0.47	0.47	0.00	
TH-70	0.40	0.21	-0.19	-0.19
			TOTAL	-0.42 miles Class 4

I am starting to close the 2012 Certificate review process, but can continue to work with the town during the remainder of the year on any of the issues that are not resolved by the time the process is closed for 2012.

PLYMOUTH 2012 MILEAGE CERTIFICATE REVIEW NOTES
 Sara Moulton, Mapping and GIS Specialist
 21-22 March 2012

It is the policy of the VTrans Mapping Unit to not renumber town highways unless the renumbering has been reviewed and approved by the Selectboard. There are many legal documents that use the highway numbers (deeds, classification changes, etc.). Although not required by statute, we recommend that if the Selectboard is intent on renumbering town highways, it should follow the reclassification process outlined in statute and submit documentation indicating that the Selectboard has discussed and approved the renumbering being requested.

We will also request documentation that confirms that the Selectboard coordinated the renumbering with the E911 Board to make sure that the renumbering is based on the most current and official road names.

The following documentation is what we typically request as part of the V.S.A. Title 19, § 709. Notice and hearing process.

- copies of the Selectboard's minutes of the meetings at which the Selectboard took action on these reclassifications,
- a copy of the notice that was sent to the abutting landowners via certified mail,
- a copy of the notice that was sent to the local newspaper including the name of the newspaper, and
- a copy of the minutes of the site visit.

The Vermont Statutes Annotated can be referred to online at this address:
<http://www.leg.state.vt.us/statutes/sections.cfm?Title=19&Chapter=007>

Another resource that might be helpful is "The 'Orange Book' a Handbook for Local Officials" available online at http://www.aot.state.vt.us/ops/documents/AOT-OPS_OrangeBook.pdf.

I have reviewed the changes submitted with Plymouth's 2012 Mileage Certificate. The details are itemized below.

TOWN HIGHWAY	REMARKS
TH-5	Plymouth TH 5 does not continue past TH 8. This is a new road and has been numbered TH 51.
	VTrans Response The 1.10-mile section of TH-5 that continues past TH-8 has been on the map since 1974 when the current classification scheme was implemented. A 0.31-mile section was added in 2011. TH-51 is a previously used number referring to a road between Amherst Lake and Echo Lake that was Discontinued in 2009. We will not renumber TH-5 east of TH-8.
TH-14	Plymouth TH 14 (0.193 cl3) should be added which comes off Rt 100A (existed on previous map)

TOWN HIGHWAY	REMARKS
	<p>VTrans Response TH-14 was discontinued in 1987 It comes off TH-5 about 0.53 miles south of the intersection of TH-5 with VT-100A</p> <p>We will not re-add this without documentation demonstrating that <i>there has been legal establishments of a new highway on this alignment. See Disc. Documents</i></p>
TH-15	<p>Plymouth TH 15 continues to the intersection of TH 21, TH 43 and TH 23. It does not continue along "Patch Brook"</p>
	<p>VTrans Response This is a renumbering situation, the alignment of TH-15 has been in place since 1974. We will not implement this renumbering.</p>
TH-17	<p>Plymouth TH 17 continues through the Coolidge State Forest (not TH 41)</p>
	<p>VTrans Response This is a renumbering situation, this section of town highway has been numbered TH-14 since 1974. We will not implement this renumbering.</p>
TH 18	<p>Plymouth TH 18 should be shown as drawn in green. The short section, 0.23m, that continues into the state forest was a logging skid and should be deleted.</p>
TH-18 CL4 = 0.64 mi / TH-72 CL4 = 0.00 mi	<p>VTrans Response The alignment for TH-18/TH-72 has been corrected. It results in the elimination of TH-72 and a total mileage of 0.64 for TH-18.</p>
TH-19	<p>Plymouth TH 19 extends from TH 5 to TH 42</p>
TH-19 CL4 = 3.02 mi / TH-68 CL4 = 0.00	<p>VTrans Response This includes TH-68 that was added in 2011. The documentation submitted by the town in 2009-2011 ties TH-68 with the existing TH-19. Since this is a newly assigned town highway number, we will consider this change to be an error correction and assign this portion of town highway to TH-19.</p>
TH-23	<p>Plymouth The class 3 mileage listed on the current map is incorrect and should have been 1.07</p>
	<p>VTrans Response I'm not sure where you are referring to. <i>More documentation and details is needed regarding this issue.</i></p>
TH-25	<p>Plymouth The road along Patch Brook should be TH 25. The 1 mi section after TH 25 turns left should be new number TH 53</p>
	<p>VTrans Response This is a renumbering situation, the alignment of TH-25 has been in place since 1974. TH-53 is a previously used number referring to a road of TH-8 between TH-39 and the Bridgewater town line that was Discontinued in 1990.</p> <p>We will not implement this renumbering.</p>
TH-27	<p>Plymouth TH 65 is an extension of TH 27.</p>

TOWN HIGHWAY	REMARKS
	<p>VTrans Response Based on the documentation supplied by the town 2009-2011, it might be possible to consider TH-66 (rather than 65) as an extension of TH-27 although it isn't as strongly supported as the merging of TH-68 into TH-19 noted above.</p> <p>Since this is a newly assigned town highway number, we can consider making this change upon further communication with the town.</p>
TH-39	<p>Plymouth TH 70 is an extension of TH 39 and the 0.15 spur is a drive not a town road.</p>
	<p>VTrans Response In November 2010 I wrote to the town asking for clarification on the alignment of TH-39 and TH-70 (copy enclosed). I did not receive a response from the town at the time.</p> <p>I am still unsure of the alignment (see enclosed map titled "TH-39 / TH-39 Extension"). Does the eastern portion of the road generally follow the parcel boundary (Alignment A) or does it follow the LT7 Survey (Alignment B). <i>Please review the enclosed map the alignment and provide criticisms</i></p>
TH-41	<p>Plymouth The short section of TH41, 0.14m (class 4) had been upgraded to class 3 (previously submitted)</p>
	<p>VTrans Response In reviewing the Mileage Certificates for the past five years, it looks like Plymouth submitted a request to reclassify the 0.14 Class 4 portion of TH-41 to Class 3. In a letter dated February 2, 2009, my supervisor, Johnathan Croft, responded, "Before I can continue processing the Mileage Certificate, I need the proper documentation for the reclassification of TH-41 ..." In reviewing our files, I am unable to find that the documentation was submitted.</p> <p>In a letter written by Jim Allen, Plymouth Selectboard Chair, dated March 11, 2009, he states "I believe Peter [Fellows] has already submitted documentation for the discontinuance of TH-51 (Amherst Rd) and is working on TH-41 (Johnson's Farm Rd)."</p> <p>We have not received the documentation. If a copy of the appropriate reclassification documentation is supplied, we can process this reclassification.</p>
TH-41	<p>The 0.07m spur in Coolidge State Park should be eliminated.</p>
	<p>VTrans Response The 0.07-mile spur has been eliminated. There is no change in mileage. Mileage on the adjacent section of town highway is distributed more correctly.</p>
TH-51	<p>Plymouth TH 51 should be added at the end of TH 5 (exists on map as TH 5)</p>
	<p>VTrans Response see TH-5 above, <i>TH-51 has been discontinued and this number will not be reused.</i></p>
TH-53	<p>Plymouth TH 53 should be added at the end of TH 25 (was TH 15)</p>
	<p>VTrans Response see TH-25 above</p>
TH-65	<p>Plymouth TH 65 is an extension of TH 27</p>
	<p>VTrans Response see TH-27 above</p>
TH-68	<p>Plymouth TH 19 extends from TH 5 to TH 42 [covers TH-68]</p>
	<p>VTrans Response change processed - see TH-19 above</p>

TOWN HIGHWAY	REMARKS
TH-70	see TH-39 above
TH-73	Plymouth TH 73 ends at a property line 1.00 mi from Rt 100. It does not continue to TH 5 (this was submitted with GPS data previously)
	VTrans Response Two of the maps (on a USGS base) submitted with the original 2009 request show this road extending from VT-100 to TH-5. The distance calculated at 1.34 miles. It was this mileage that the Selectboard approved as part of the 2011 Certificate process. In order to implement this change, I will need to have a copy of the minutes in which the Selectboard reviewed and approved the reduction in mileage from 1.34 to 1.00. ???? is this the right approach? (Sara) - Seems appropriate to include map.

Discontinuance of 0.34 miles of TH-73 and the ~~mileage~~ associated documentation regarding this mileage change.

need to summarize the mileage changes

	CLY				Diff
TH-18	0.34	→	0.64	+ 0.30	
TH-72	0.53	→	0.00	- 0.53	- 0.23
TH-19	1.00	→	3.02	+ 2.02	
TH-68	2.02	→	0.00	- 2.02	0.00 no mileage change
TH-39	0.47	→	0.47	0.00	
TH-70	0.40	→	0.21	- 0.19	- 0.19
					<hr/>
			Total change	- 0.42	CLY

Moulton, Sara

From: rtonks@aol.com
Sent: Thursday, March 15, 2012 10:57 AM
To: Moulton, Sara
Subject: Re: Cert of Mileage

Sara
Thank you. The map is in the mail. I believe that most of the changes are # and name changes to be consistent with mailing address's etc. I know there is a section on TH 41 that was upgraded years ago to CI 3. There is a short stub in Coolidge the new TH 17 (.07mi) that is paved but then hooks on to the State Park road. Also TH 18 has always been drawn wrong and went into the woods as a logging trail. Do all these small changes need to be warned etc?? If so, other than the numbering changes, we won't be having a town hearing until April so the changes will have to be submitted next year. I am new on the selectboard and am trying hard to get these roads straightened out. Reviewing the PDF, many of the mileage changes were due to correcting the road numbers and not reclassifications.

Russ Tonkin
Plymouth

-----Original Message-----

From: Moulton, Sara <Sara.Moulton@state.vt.us>
To: 'rtonks@aol.com' <rtonks@aol.com>
Cc: Croft, Johnathan <Johnathan.Croft@state.vt.us>
Sent: Thu, Mar 15, 2012 10:02 am
Subject: RE: Cert of Mileage

It is hard to tell which specific minutes we need based on what we have received (I've attached a PDF copy of what we received).

Based on Part II of the Certificate and the addendum, it looks like some discontinuances and reclassifications might have occurred. If so, we need documentation that demonstrates that the town followed the reclassification and discontinuance process as defined in V.S.A. Title 19, § 709. Notice and hearing. Specifically, we need the following items:

- copies of the Selectboard's minutes of the meetings at which the Selectboard took action on these reclassifications,
- a copy of the notice that was sent to the abutting landowners via certified mail,
- a copy of the notice that was sent to the local newspaper including the name of the newspaper, and
- a copy of the minutes of the site visit.

Sara Moulton

From: rtonks@aol.com [<mailto:rtonks@aol.com>]
Sent: Thursday, March 15, 2012 9:41 AM
To: Moulton, Sara
Subject: Re: Cert of Mileage

Sara
Which selectboard minutes do you need??

Russ Tonkin

-----Original Message-----

From: Moulton, Sara <Sara.Moulton@state.vt.us>
To: rtonks <rtonks@aol.com>
Cc: Croft, Johnathan <Johnathan.Croft@state.vt.us>
Sent: Thu, Mar 15, 2012 9:30 am
Subject: RE: Cert of Mileage

The 2012 Certificate of Highway Mileage we have received is incomplete. On the Certificate is a note to "See attached minutes." There were no minutes included with the Certificate we received. Also, an enclosed addendum states "Please refer to the enclosed color coded map for clarity." No map was included.

I will be unable to process the Certificate without the documentation. My target date for closing the review of the Certificates for 2012 is March 20.

Sara Moulton, GISP
Mapping & GIS Specialist, Mapping Unit
Division of Policy and Planning
Vermont Agency of Transportation (VTrans)
Tel: 802-828-2109

From: Croft, Johnathan
Sent: Thursday, March 15, 2012 8:45 AM
To: 'rtonks@aol.com'
Cc: Moulton, Sara
Subject: RE: Cert of Mileage

Good morning Russ,

We received it in the mail yesterday and will be reviewing the submittal. I will let you know if we have any questions regarding the submittal.

Johnathan Croft
VTrans Mapping Unit
(802) 828-2600

From: rtonks@aol.com [<mailto:rtonks@aol.com>]
Sent: Thursday, March 15, 2012 7:33 AM
To: Croft, Johnathan
Subject: Cert of Mileage

Johnathan
Just checking to see if you received Plymouth,s Cert of Mileage?

Thanks
Russ Tonkin
Selectman

Moulton, Sara

From: Moulton, Sara
Sent: Thursday, March 15, 2012 10:02 AM
To: 'rtonks@aol.com'
Cc: Croft, Johnathan
Subject: RE: Cert of Mileage
Attachments: Plymouth_cert_2012.pdf

It is hard to tell which specific minutes we need based on what we have received (I've attached a PDF copy of what we received).

Based on Part II of the Certificate and the addendum, it looks like some discontinuances and reclassifications might have occurred. If so, we need documentation that demonstrates that the town followed the reclassification and discontinuance process as defined in V.S.A. Title 19, § 709. Notice and hearing. Specifically, we need the following items:

- copies of the Selectboard's minutes of the meetings at which the Selectboard took action on these reclassifications,
- a copy of the notice that was sent to the abutting landowners via certified mail,
- a copy of the notice that was sent to the local newspaper including the name of the newspaper, and
- a copy of the minutes of the site visit.

Sara Moulton

From: rtonks@aol.com [<mailto:rtonks@aol.com>]
Sent: Thursday, March 15, 2012 9:41 AM
To: Moulton, Sara
Subject: Re: Cert of Mileage

Sara
Which selectboard minutes do you need??

Russ Tonkin

-----Original Message-----

From: Moulton, Sara <Sara.Moulton@state.vt.us>
To: rtonks <rtonks@aol.com>
Cc: Croft, Johnathan <Johnathan.Croft@state.vt.us>
Sent: Thu, Mar 15, 2012 9:30 am
Subject: RE: Cert of Mileage

The 2012 Certificate of Highway Mileage we have received is incomplete. On the Certificate is a note to "See attached minutes." There were no minutes included with the Certificate we received. Also, an enclosed addendum states "Please refer to the enclosed color coded map for clarity." No map was included.

I will be unable to process the Certificate without the documentation. My target date for closing the review of the Certificates for 2012 is March 20.

Sara Moulton, GISP
Mapping & GIS Specialist, Mapping Unit
Division of Policy and Planning
Vermont Agency of Transportation (VTrans)
Tel: 802-828-2109

From: Croft, Johnathan
Sent: Thursday, March 15, 2012 8:45 AM
To: rtonks@aol.com

Cc: Moulton, Sara
Subject: RE: Cert of Mileage

Good morning Russ,

We received it in the mail yesterday and will be reviewing the submittal. I will let you know if we have any questions regarding the submittal.

Johnathan Croft
VTrans Mapping Unit
(802) 828-2600

From: rtonks@aol.com [<mailto:rtonks@aol.com>]
Sent: Thursday, March 15, 2012 7:33 AM
To: Croft, Johnathan
Subject: Cert of Mileage

Johnathan
Just checking to see if you received Plymouth,s Cert of Mileage?

Thanks
Russ Tonkin
Selectman

Mileage Changes for Plymouth February 2012

Old mileage is in parenthesis See enclosed color coded Vtrans map

	Class 3	Class 4
TH 5		0(1.41)
TH 14*	0.193(0.0)	was on previous map
TH 15	1.9(3.25)	0(1.0)
TH 17	1.94(1.06)	0.96(0.21)
TH 18		0.64(0.34)
TH 19		3.02(1.00)
TH 23	0.33(1.07)	0.77 (note: the class 3 mileage listed on the current map is incorrect and should have been 1.07)
TH 25	2.34(0.30)	
TH 27		3.49(2.43)
TH 39		0.72(0.47)
TH 41	1.2(2.01)	0.0(0.14)
TH 51*(end of TH 5)		1.41
TH 53*(end of TH 25) (was TH 15)		1.00
TH 73		1.00(1.34)
Delete		
TH 65		
TH 68		
TH 69		
TH 70		
TH 72		
* New numbers assigned by Selectboard		
TOTAL	37.123(36.86)	25.27(26.13)

Received

MAR 14 2012

Policy, Planning & Intermodal
Development Division

TOWN OF PLYMOUTH



68 Town Office Road
Plymouth, Vermont 05056
Tel. (802) 672-3655
Fax (802) 672-5466

BIRTHPLACE OF CALVIN COOLIDGE
30TH PRESIDENT
OF THE UNITED STATES

January 10, 2012

Addendum to 2012 Certificate of Mileage-Plymouth

The following corrections need to be made on our official Vtrans map. Mileage corrections are listed on the attachment to certificate of mileage. Please refer to enclosed color coded map for clarity:

- TH 14 (0.193 cl 3) should be added which comes off of Rt 100A(existed on previous map)
- TH 51 should be added at the end of TH 5(exists on map as TH 5)
- TH 53 should be added at the end of TH 25(was TH 15)
- TH 17 continues through the Coolidge State Forest (not TH 41)
- The 0.07m spur in Coolidge State Park should be eliminated.
- TH 70 is an extension of TH 39 and the 0.15 spur is a drive not a town road.
- TH 18 should be shown as drawn in green. The short section, 0.23m, that continues into the state forest was a logging skid and should be deleted
- The short section of TH41, 0.14m (class 4) had been upgraded to class 3.(previously submitted)
- TH 5 does not continue past TH 8. This is a new road and has been numbered TH 51
- TH 65 is an extension of TH 27.
- TH 73 ends at a property line 1.00mi from Rt 100. It does not continue to TH 5.(this was submitted with GPS data previously)
- TH 15 continues to the intersection of TH 21, TH 43 and TH 23. It does not continue along "Patch Brook".
- The road along Patch Brook should be TH 25.
- The 1 mi section after TH 25 turns left should be new number TH 53
- TH 19 extends from TH 5 to TH 42

An updated mileage list is included with changes that were made above. If you have any questions concerning these changes, please feel free to contact us. We will continue to review the map and submit further changes as necessary.

Selectboard, Plymouth



State of Vermont
Policy, Planning and Intermodal Development Division-Mapping Unit
1 National Life Drive
Montpelier, VT 05633-5001
<http://www.aot.state.vt.us>

Agency of Transportation

Telephone: 802-828-2600
Fax: 802-828-2334

March 8, 2012

Chair, Selectboard
Plymouth, c/o Town Clerk
68 Town Office Rd
Plymouth, VT 05056

TO: TOWN CLERK and SELECTBOARD

In early January, the Vermont Agency of Transportation mailed the annual Certificate of Highway Mileage to you for completion and return. To date, your town's certificate has not been received. We use this certificate to confirm highway mileage for the purpose of allocating state aid for town roads. If we do not receive a completed mileage certificate from you by March 20, we will assume there are no changes from last year's certificate and state aid will be based on those mileages.

The completed mileage certificate should be returned to:

Vermont Agency of Transportation
PPIDD - Mapping Unit
1 National Life Drive
Montpelier, VT 05633-5001

Please feel free to contact me with any questions or comments regarding the Mileage Certificates or the process. I can be reached via telephone at (802) 828-2600 or via email at johnathan.croft@state.vt.us.

Sincerely,

A handwritten signature in black ink, appearing to read "Johnathan Croft".

Johnathan Croft
AOT GIS Database Administrator

JFC/sem

cc: Mileage Certificate File



**CERTIFICATE OF HIGHWAY MILEAGE
YEAR ENDING FEBRUARY 10, 2012**

Fill out form, make and file copy with the Town Clerk, and mail ORIGINAL, before February 20, 2012 to:
Vermont Agency of Transportation, Division of Policy, Planning and Intermodal Development,
One National Life Drive, Montpelier, VT 05633.

We, the members of the legislative body of PLYMOUTH in WINDSOR County
on an oath state that the mileage of highways, according to Vermont Statutes Annotated, Title 19, Section 305,
added 1985, is as follows:

PART I - CHANGES TOTALS - Please fill in and calculate totals.

Town Highways	Previous Mileage	Added Mileage	Subtracted Mileage	Total	Scenic Highways
Class 1	0.000				0.000
Class 2	3.720				0.000
Class 3	37.13				0.000
State Highway	14.488				0.000
Total	55.338				0.000
* Class 1 Lane	0.000				0.000
* Class 4	26.13				
* Legal Trail	1.16				
* Unidentified Corridor	0.00				

* Mileage for Class 1 Lane, Class 4, Legal Trail, and Unidentified Corridor classifications are NOT included in total.

PART II - INFORMATION AND DESCRIPTION OF CHANGES SHOWN ABOVE.

1. NEW HIGHWAYS: Please attach Selectmen's "Certificate of Completion and Opening".
2. DISCONTINUED: Please attach SIGNED copy of proceedings (minutes of meeting).
3. RECLASSIFIED/REMEASURED: Please attach SIGNED copy of proceedings (minutes of meeting).
4. SCENIC HIGHWAYS: Please attach a copy of order designating/discontinuing Scenic Highways.

IF THERE ARE NO CHANGES IN MILEAGE: Check box and sign below. []

PART III - SIGNATURES - PLEASE SIGN.

Selectmen/ Aldermen/ Trustees Signatures: _____

T/C/V Clerk Signature: _____ Date Filed: _____

Please sign ORIGINAL and return it for Transportation signature.

AGENCY OF TRANSPORTATION APPROVAL: Signed copy will be returned to T/C/V Clerk.

APPROVED: _____ DATE: _____
 Representative, Agency of Transportation

Moulton, Sara

From: Moulton, Sara
Sent: Thursday, February 24, 2011 11:14 AM
To: 'Pete Fellows'
Subject: RE: Plymouth COM

Yes, we received it Feb. 9, 2011. I haven't had a chance to review it yet.

Sara Moulton, GISP
Mapping & GIS Specialist, Mapping Unit
Division of Policy and Planning
Vermont Agency of Transportation (VTrans)
Tel: 802-828-2109

From: Pete Fellows [<mailto:pfellows@trorc.org>]
Sent: Thursday, February 24, 2011 10:20 AM
To: Moulton, Sara
Subject: Plymouth COM

Have you guys rec'd Plymouth yet?

From: rtonks@aol.com [<mailto:rtonks@aol.com>]
Sent: February 24, 2011 8:50 AM
To: pfellows@trorc.org
Subject: Roads

Pete
Could you check one more time with your state contact to see if they received Plymouth's COM?

Thanks

Russ T

Moulton, Sara

From: Moulton, Sara
Sent: Tuesday, February 08, 2011 9:57 AM
To: 'Pete Fellows'; rtonks@aol.com
Subject: RE: Roads

We have not received Plymouth's Certificate of Highway Mileage for the Year Ending February 10, 2011.

Sara Moulton, GISP
Mapping & GIS Specialist, Mapping Unit
Division of Policy and Planning
Vermont Agency of Transportation (VTrans)
Tel: 802-828-2109

From: Pete Fellows [<mailto:pfellows@trorc.org>]
Sent: Tuesday, February 08, 2011 9:22 AM
To: rtonks@aol.com
Cc: Moulton, Sara
Subject: RE: Roads

Sara-

Plymouth was curious to see if your office received the COM?

Thanks
-Pete

From: rtonks@aol.com [<mailto:rtonks@aol.com>]
Sent: February 8, 2011 9:18 AM
To: pfellows@trorc.org
Subject: Roads

Pete
Could you check with you State source to see if they received Plymouth COM.

Thanks

Russ Tonkin

Moulton, Sara

From: Pete Fellows [pfellows@trorc.org]
Sent: Monday, November 29, 2010 9:27 AM
To: Moulton, Sara
Subject: RE: Plymouth

Looks good. The Mecawee one is about a ½ mile from my house... so I will get with the town and get back to you.

From: Moulton, Sara [mailto:Sara.Moulton@state.vt.us]
Sent: November 29, 2010 9:20 AM
To: 'Pete Fellows'
Subject: RE: Plymouth

Attached is a copy of a letter I mailed to Plymouth last week (plus maps). I've also attached a zipped shapefile with my interpretation of the documentation the town submitted plus the centerlines you emailed to me. Let me know if you think I am significantly wrong with my interpretation.

Sara Moulton

From: Pete Fellows [mailto:pfellows@trorc.org]
Sent: Monday, November 29, 2010 9:02 AM
To: Moulton, Sara
Subject: Plymouth

FYI...should correspond to my attributes.

From: rtonks@aol.com [mailto:rtonks@aol.com]
Sent: November 29, 2010 8:59 AM
To: pfellows@trorc.org
Subject: Re: Vtrans

Pete

Can we get a copy. You might know we dropped Johnson Rd and there is still negotiations on Crown Point. We also are not submitting Reggies and beyond. There are 15 roads we are requesting(not including CP). They are PTH 1,2,3,4,5,6,7,8,11,12,13,14,15,16 and 17.

Russ

-----Original Message-----

From: Pete Fellows <pfellows@trorc.org>
To: rtonks@aol.com
Sent: Mon, Nov 29, 2010 7:55 am
Subject: RE: Vtrans

Sure...I have already sent the data to the map tech up there last week.

From: rtonks@aol.com [mailto:rtonks@aol.com]
Sent: November 28, 2010 11:17 AM
To: pfellows@trorc.org
Subject: Vtrans

Pete

We are trying to finish up the ancient roads. We have submitted all our data to the State but they will need a map of the additions. Is it possible to put the roads we have submitted on a Vtrans map to submit with the cert of mileage in Feb?

Russ T

Moulton, Sara

From: Moulton, Sara
Sent: Monday, November 29, 2010 9:20 AM
To: 'Pete Fellows'
Subject: RE: Plymouth
Attachments: Plymouth_review.pdf; Plymouth_LT7.pdf; Plymouth_LT7_ortho.pdf; VTrans_2011_Plymouth.zip

Attached is a copy of a letter I mailed to Plymouth last week (plus maps). I've also attached a zipped shapefile with my interpretation of the documentation the town submitted plus the centerlines you emailed to me. Let me know if you think I am significantly wrong with my interpretation.

Sara Moulton

From: Pete Fellows [<mailto:pfellows@trorc.org>]
Sent: Monday, November 29, 2010 9:02 AM
To: Moulton, Sara
Subject: Plymouth

FYI...should correspond to my attributes.

From: rtonks@aol.com [<mailto:rtonks@aol.com>]
Sent: November 29, 2010 8:59 AM
To: pfellows@trorc.org
Subject: Re: Vtrans

Pete
Can we get a copy. You might know we dropped Johnson Rd and there is still negotiations on Crown Point. We also are not submitting Reggies and beyond. There are 15 roads we are requesting(not including CP). They are PTH 1,2,3,4,5,6,7,8,11,12,13,14,15,16 and 17.

Russ

-----Original Message-----
From: Pete Fellows <pfellows@trorc.org>
To: rtonks@aol.com
Sent: Mon, Nov 29, 2010 7:55 am
Subject: RE: Vtrans

Sure...I have already sent the data to the map tech up there last week.

From: rtonks@aol.com [<mailto:rtonks@aol.com>]
Sent: November 28, 2010 11:17 AM
To: pfellows@trorc.org
Subject: Vtrans

Pete
We are trying to finish up the ancient roads. We have submitted all our data to the State but they will need a map of the additions. Is it possible to put the roads we have submitted on a Vtrans map to submit with the cert of mileage in Feb?

Russ T

Moulton, Sara

From: Pete Fellows [pfellows@trorc.org]
Sent: Monday, November 29, 2010 9:02 AM
To: Moulton, Sara
Subject: Plymouth

FYI...should correspond to my attributes.

From: rtonks@aol.com [mailto:rtonks@aol.com]
Sent: November 29, 2010 8:59 AM
To: pfellows@trorc.org
Subject: Re: Vtrans

Pete
Can we get a copy. You might know we dropped Johnson Rd and there is still negotiations on Crown Point. We also are not submitting Reggies and beyond. There are 15 roads we are requesting(not including CP). They are PTH 1,2,3,4,5,6,7,8,11,12,13,14,15,16 and 17.

Russ

-----Original Message-----
From: Pete Fellows <pfellows@trorc.org>
To: rtonks@aol.com
Sent: Mon, Nov 29, 2010 7:55 am
Subject: RE: Vtrans

Sure...I have already sent the data to the map tech up there last week.

From: rtonks@aol.com [mailto:rtonks@aol.com]
Sent: November 28, 2010 11:17 AM
To: pfellows@trorc.org
Subject: Vtrans

Pete
We are trying to finish up the ancient roads. We have submitted all our data to the State but they will need a map of the additions. Is it possible to put the roads we have submitted on a Vtrans map to submit with the cert of mileage in Feb?

Russ T

Moulton, Sara

From: Moulton, Sara
Sent: Friday, November 19, 2010 11:29 AM
To: 'Pete Fellows'
Subject: RE: Plymouth Ancient Roads

Thank you, very helpful.

>>> 9, 10, 18 may be in Court <<<

Confirmed, I received a letter from Plymouth stating that those are being dropped from their request.

Sara

From: Pete Fellows [<mailto:pfellows@trorc.org>]
Sent: Friday, November 19, 2010 11:21 AM
To: Moulton, Sara
Subject: RE: Plymouth Ancient Roads

Here you are...

Caveats:

GPS data with town records modification on some
9, 10, 18 may be in Court.

From: Moulton, Sara [<mailto:Sara.Moulton@state.vt.us>]
Sent: November 19, 2010 10:42 AM
To: 'Pete Fellows'
Subject: Plymouth Ancient Roads

Do you happen to have the centerlines for the ancient roads that Plymouth is proposing to add? They are identified as PLT1 (or LT1) through PLT17 (or LT17)?

Sara Moulton, GISP
Mapping & GIS Specialist, Mapping Unit
Division of Planning, Outreach and Community Affairs
Vermont Agency of Transportation (VTrans)
Tel: 802-828-2109

Moulton, Sara

From: Moulton, Sara
Sent: Wednesday, February 24, 2010 10:58 AM
To: Croft, Johnathan
Subject: Accepted: Plymouth - Meeting with Russ Tonkins



State of Vermont
Division of Planning, Outreach and Community Affairs
Mapping Unit
1 National Life Drive
Montpelier, VT 05633-5001
<http://www.aot.state.vt.us>

Agency of Transportation

Telephone: 802-828-2109
Fax: 802-828-2334
Email: sara.moulton@state.vt.us

November 19, 2010

Chair, Selectboard
Plymouth, c/o Town Clerk
68 Town Office Rd
Plymouth, VT 05056

Dear Selectboard:

After reviewing the documentation supplied by the Selectboard of the Town of Plymouth in their letters to the VTrans Mapping Unit dated July 12, 2010 and November 15, 2010, the following questions have arisen.

PLT/PTH7 (Mecawee Pond Rd or Trail)

(PLT = Plymouth Trail, PTH = Plymouth Town Highway)

I have several questions about this addition. First, what classification does the town want applied to this? One document states that it is to be added as a trail, another document refers to it as a Class 4.

Also, I need clarification about the appropriate location and alignment of TH-39 (please see enclosed map titled "TH-39 / LT7"). Is the current alignment as drawn on the map correct or should it follow the ROW as defined by the Plymouth parcel data?

In plotting the alignment of LT7 from the information contained in the original survey and laying out document dated 1847, I am coming up with a different location and alignment than what is shown on the map provided by the town titled "PLT7 Mecawee Trl" (copy enclosed).

Please provide clarification regarding the appropriate alignments for TH-39 and LT7.

PTH13 (Pollard Cemetery Rd) and PTH14 (Dix Hill)

The documentation consisting of the original survey and laying out documents are adequate for us to add these roads to the town highway map as follows:

PTH13 (Pollard Cemetery Rd) Class 4 0.41 miles

PTH14 (Dix Hill) - Class 4 Pent 0.54 miles

PTH, PTH, PTH5, PTH6, PTH8, PTH11, PTH12, PTH15, TLT16 and PLT17

These roads do not have enough historical documentation to support adding them to the town highway map, but may be included in the 2011 edition. In its letter dated November 15, 2010, the Town of Plymouth Selectboard noted:

"We realize not all these roads have been substantiated by a formal survey; however, extensive research has been done to find surveys including town land records and select board minutes. The Plymouth selectboard understands that we are adding these roads at our own peril."

At this point, if these roads are added to the 2011 Certificate of Highway Mileage, the VTrans Mapping Unit plans to add them to the 2011 town highway map.

The following is a summary of the roads and the mileage we have calculated for them:

- PTH1 (Colby Pond Rd) - Class 4 1.06 miles
- PTH2 (Reading Pond Rd) - Class 4 1.90 miles
- PTH3 (Buxton Schoolhouse Rd) - Class 4 1.22 miles
- PTH4 (Pine Hill Rd) - Class 4 2.02 miles
- PTH5 (Ranger Station Rd) - Class 4 0.75 miles
- PTH6 (Mt. Moses Rd) - Class 4 0.31 miles
- PTH8 (Skim Milk Rd) - Class 4 1.43 miles
- PTH11 (Five Corners Cemetery Rd) - Class 4 0.53 miles
- PTH12 (Old Notch Rd) - Class 4 1.34 miles
- PTH15 (Bruyn Rd) - Class 4 0.80 miles
- PLT16 (Frank Hall Trl) - Legal Trail 0.23 miles
- PLT17 (Barbara Mann Trl) - Legal Trail 0.93 miles

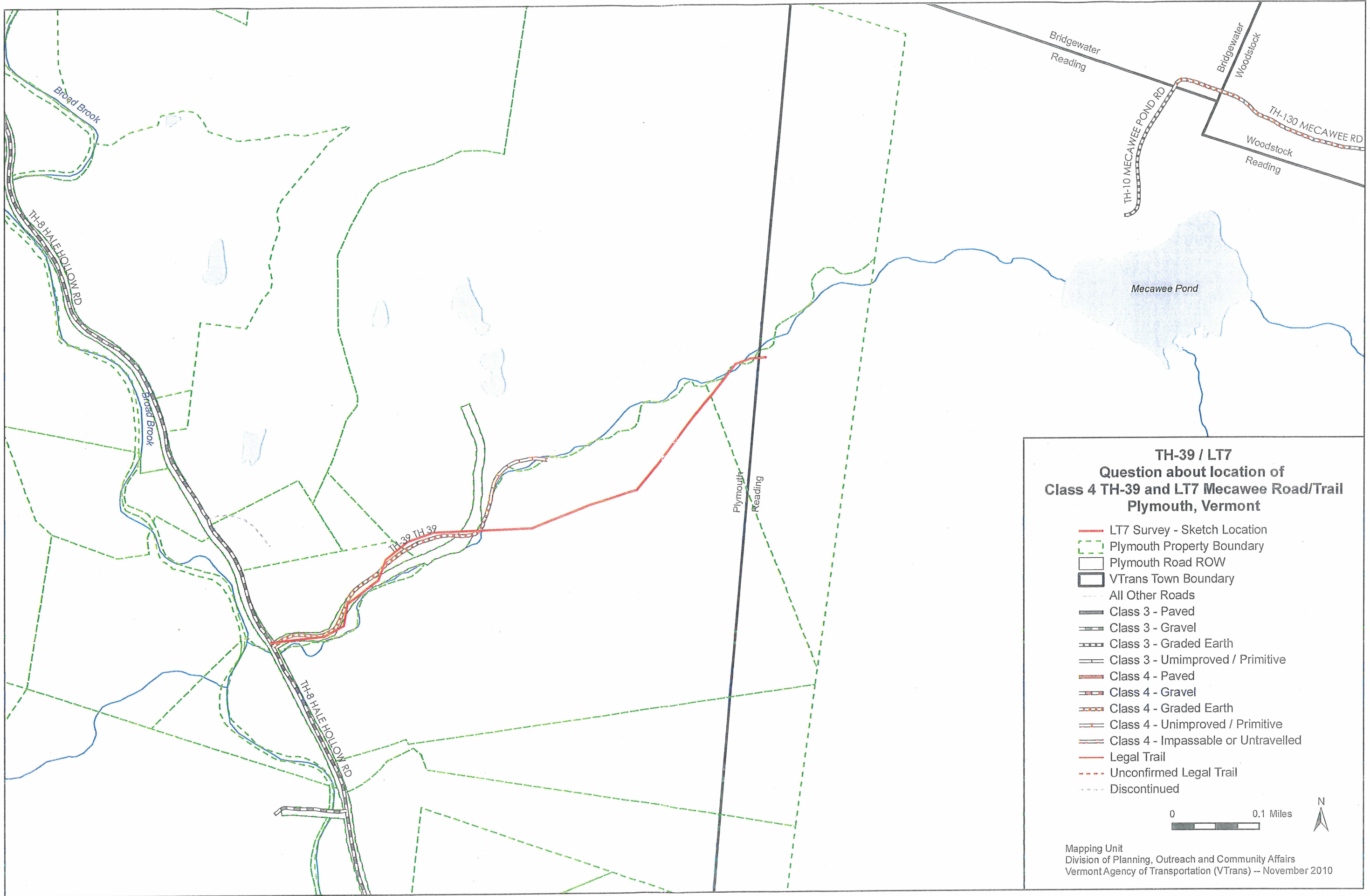
Please forward clarification regarding the questions above and we will prepare the 2011 Mileage Certificate with these changes noted on it.

Please let me know if you have any questions.

Sincerely,

Sara Moulton

Sara Moulton
Mapping & GIS Specialist

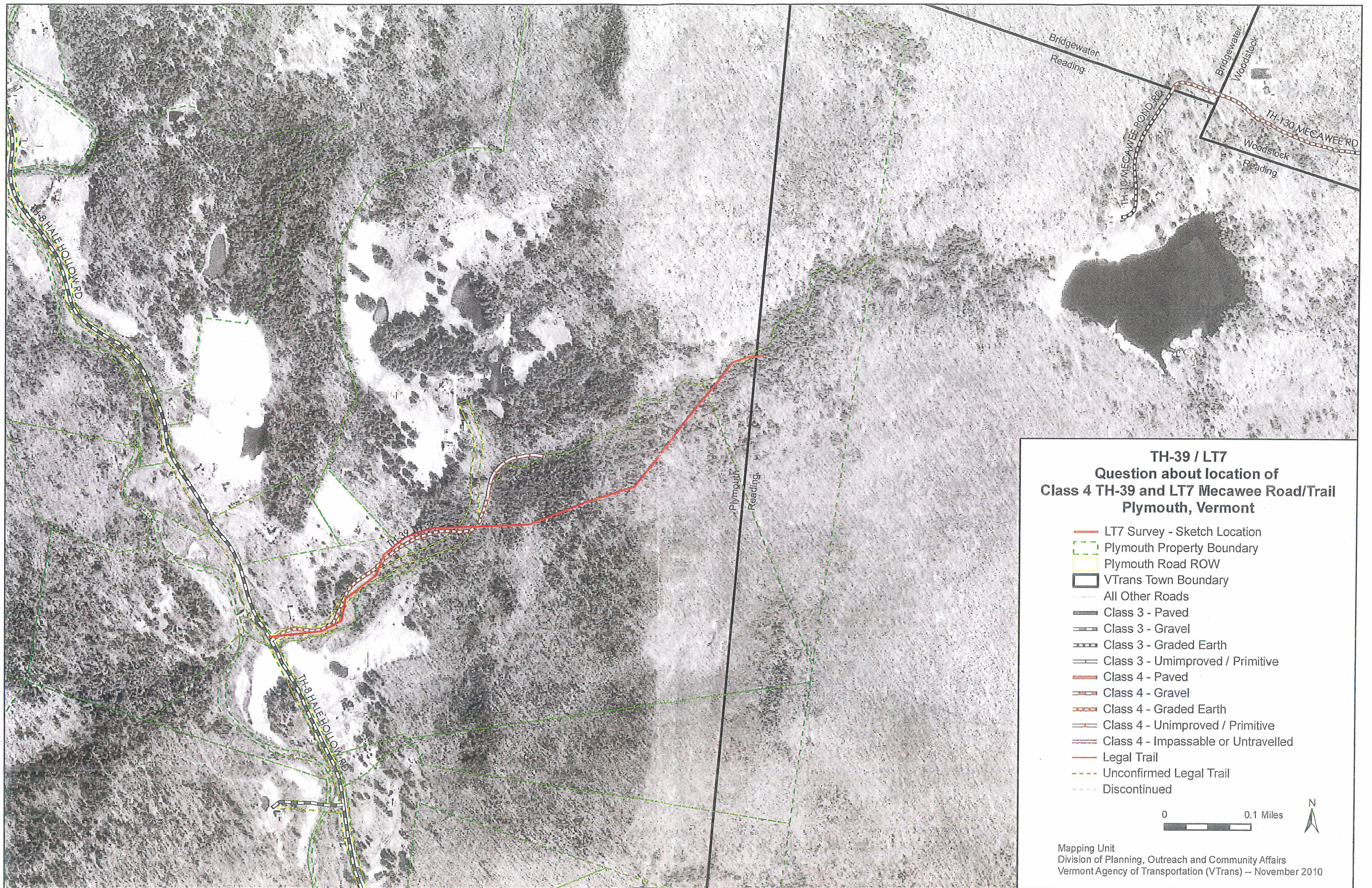


TH-39 / LT7
Question about location of
Class 4 TH-39 and LT7 Mecawee Road/Trail
Plymouth, Vermont

- LT7 Survey - Sketch Location
- Plymouth Property Boundary
- ▭ Plymouth Road ROW
- ▭ VTrans Town Boundary
- All Other Roads
- ▬ Class 3 - Paved
- ▬ Class 3 - Gravel
- ▬ Class 3 - Graded Earth
- ▬ Class 3 - Unimproved / Primitive
- ▬ Class 4 - Paved
- ▬ Class 4 - Gravel
- ▬ Class 4 - Graded Earth
- ▬ Class 4 - Unimproved / Primitive
- ▬ Class 4 - Impassable or Untravelled
- Legal Trail
- Unconfirmed Legal Trail
- Discontinued

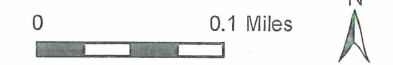


Mapping Unit
 Division of Planning, Outreach and Community Affairs
 Vermont Agency of Transportation (VTrans) – November 2010



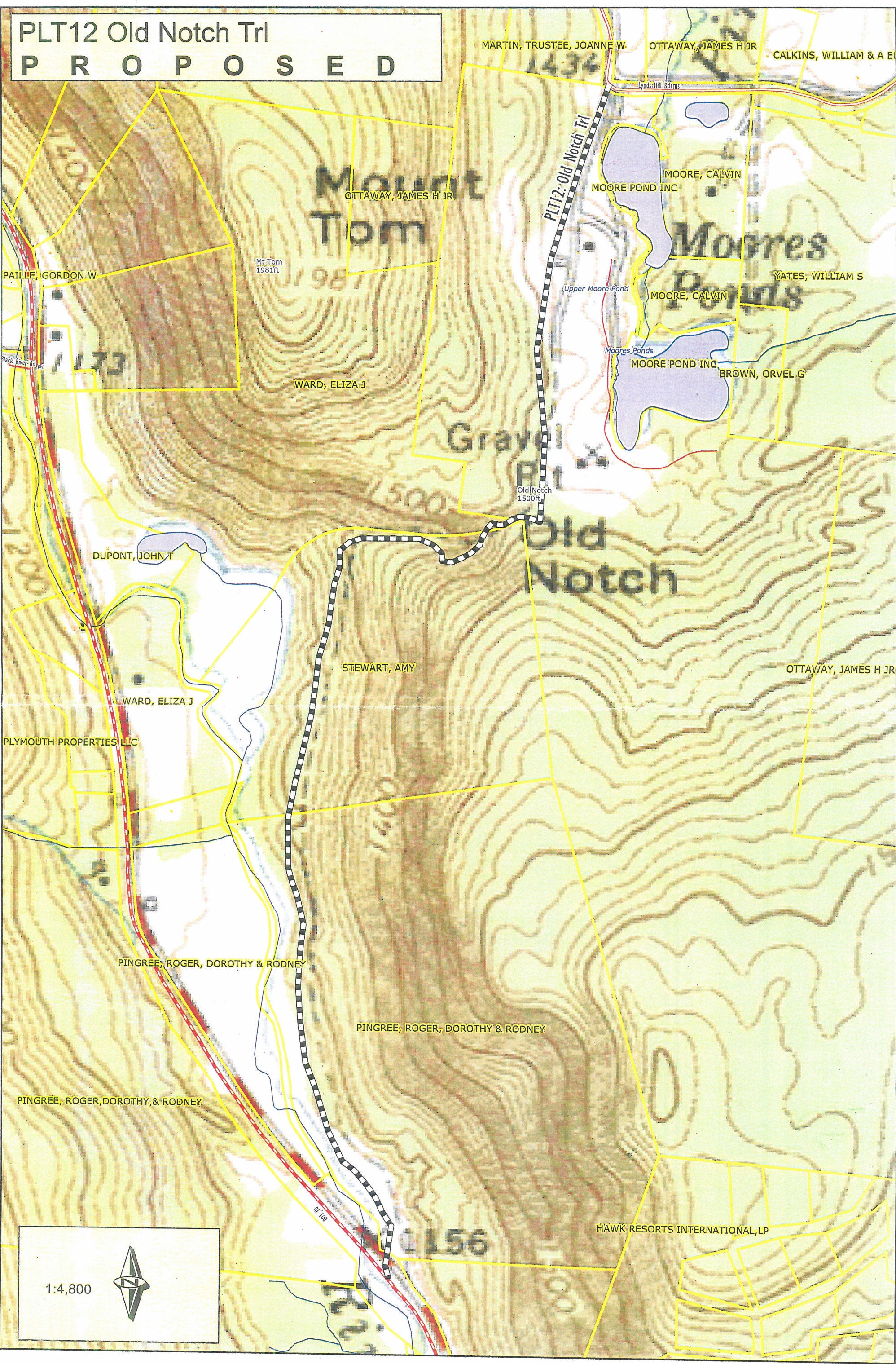
TH-39 / LT7
Question about location of
Class 4 TH-39 and LT7 Mecawee Road/Trail
Plymouth, Vermont

- LT7 Survey - Sketch Location
- Plymouth Property Boundary
- Plymouth Road ROW
- VTrans Town Boundary
- All Other Roads
- Class 3 - Paved
- Class 3 - Gravel
- Class 3 - Graded Earth
- Class 3 - Unimproved / Primitive
- Class 4 - Paved
- Class 4 - Gravel
- Class 4 - Graded Earth
- Class 4 - Unimproved / Primitive
- Class 4 - Impassable or Untravelled
- Legal Trail
- Unconfirmed Legal Trail
- Discontinued




Mapping Unit
 Division of Planning, Outreach and Community Affairs
 Vermont Agency of Transportation (VTrans) – November 2010

PLT12 Old Notch Trl
P R O P O S E D



1:4,800



TH-73



State of Vermont
Division of Planning, Outreach and Community Affairs
Mapping Unit

1 National Life Drive
Montpelier, VT 05633-5001
<http://www.aot.state.vt.us>

Telephone: 802-828-2109
Fax: 802-828-2334
Email: sara.moulton@state.vt.us

Agency of Transportation

November 19, 2010

Chair, Selectboard
Plymouth, c/o Town Clerk
68 Town Office Rd
Plymouth, VT 05056

Dear Selectboard:

After reviewing the documentation supplied by the Selectboard of the Town of Plymouth in their letters to the VTrans Mapping Unit dated July 12, 2010 and November 15, 2010, the following questions have arisen .

PLT/PTH7 (Mecawee Pond Rd or Trail)

(PLT = Plymouth Trail, PTH = Plymouth Town Highway)

I have several questions about this addition. First, what classification does the town want applied to this? One document states that it is to be added as a trail, another document refers to it as a Class 4.

Also, I need clarification about the appropriate location and alignment of TH-39 (please see enclosed map titled "TH-39 / LT7"). Is the current alignment as drawn on the map correct or should it follow the ROW as defined by the Plymouth parcel data?

In plotting the alignment of LT7 from the information contained in the original survey and laying out document dated 1847, I am coming up with a different location and alignment than what is shown on the map provided by the town titled "PLT7 Mecawee Trl" (copy enclosed).

Please provide clarification regarding the appropriate alignments for TH-39 and LT7.

PTH13 (Pollard Cemetery Rd) and PTH14 (Dix Hill)

The documentation consisting of the original survey and laying out documents are adequate for us to add these roads to the town highway map as follows:

PTH13 (Pollard Cemetery Rd) Class 4 0.41 miles

PTH14 (Dix Hill) - Class 4 Pent 0.54 miles

PTH, PTH, PTH5, PTH6, PTH8, PTH11, PTH12, PTH15, TLT16 and PLT17

These roads do not have enough historical documentation to support adding them to the town highway map, but may be included in the 2011 edition. In its letter dated November 15, 2010, the Town of Plymouth Selectboard noted:

"We realize not all these roads have been substantiated by a formal survey; however, extensive research has been done to find surveys including town land records and select board minutes. The Plymouth selectboard understands that we are adding these roads at our own peril."

At this point, if these roads are added to the 2011 Certificate of Highway Mileage, the VTrans Mapping Unit plans to add them to the 2011 town highway map.

The following is a summary of the roads and the mileage we have calculated for them:

PTH1 (Colby Pond Rd) - Class 4 1.06 miles

PTH2 (Reading Pond Rd) - Class 4 1.90 miles

PTH3 (Buxton Schoolhouse Rd) - Class 4 1.22 miles

PTH4 (Pine Hill Rd) - Class 4 2.02 miles

PTH5 (Ranger Station Rd) - Class 4 0.75 miles

PTH6 (Mt. Moses Rd) - Class 4 0.31 miles

PTH8 (Skim Milk Rd) - Class 4 1.43 miles

PTH11 (Five Corners Cemetery Rd) - Class 4 0.53 miles

PTH12 (Old Notch Rd) - Class 4 1.34 miles

PTH15 (Bruyn Rd) - Class 4 0.80 miles

PLT16 (Frank Hall Trl) - Legal Trail 0.23 miles

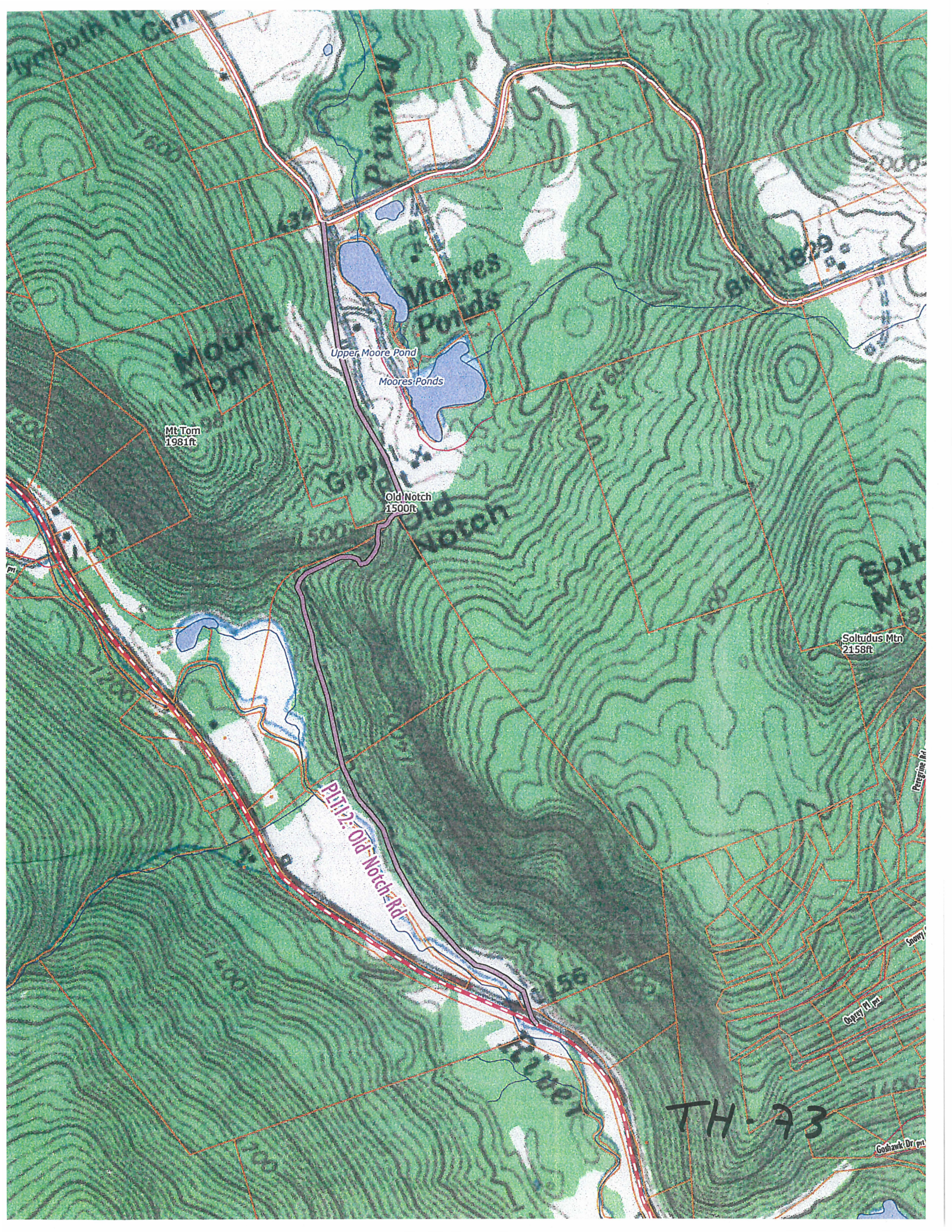
PLT17 (Barbara Mann Trl) - Legal Trail 0.93 miles

Please forward clarification regarding the questions above and we will prepare the 2011 Mileage Certificate with these changes noted on it.

Please let me know if you have any questions.

Sincerely,

Sara Moulton
Mapping & GIS Specialist



Mt Tom
1981ft

Old Notch
1500ft

Solutus Mtn
2158ft

RD 112 Old Notch Rd

TH-73

11/17/2004 - TH-18 - Bob Combest identified the alignment ISSU



ISSU

N21

N21

N21

Potential Trench Location
or TH-

Cemetery

STATE OF VERMONT)
COUNTY OF WINDSOR)
TOWN OF PLYMOUTH)

REPORT OF DISCONTINUANCE OF HIGHWAY

We, the Selectmen of the Town of Plymouth, after receiving a written request from Mary H. Ottaway to discontinue the Old Notch Road that leads through her property, did hold a properly warned hearing, pursuant to Article 8 of Title 19, VSA, to listen to interested parties on the discontinuance of the "Old Notch Road" leading from T.H. #5, "Lynds Hill Road", so called, to Rt. 100, in said town on November 14, 1983 at 7:00 P.M.

After hearing the interested parties, we, the Selectmen of Plymouth, decided to discontinue the section of the road that leads from T.H. #5, Lynds Hill Road, so called, through the property now owned by Mary H. Ottaway to a large maple tree at the southwestern edge of the Ottaway property.

Whereupon, it is ordered by the Selectmen that the said part of highway be discontinued and that the same shall hereby revert to the landowner abutting thereto.

Done at Plymouth in said County this 16th day of April, 1984.

In presence of:

Phyllis B. Martin
William H. Blanchard

Donald K. Martin
John S. Sailer
Raymond L. Billings
Selectmen, Town of Plymouth

STATE OF VERMONT)
COUNTY WINDSOR) ss.

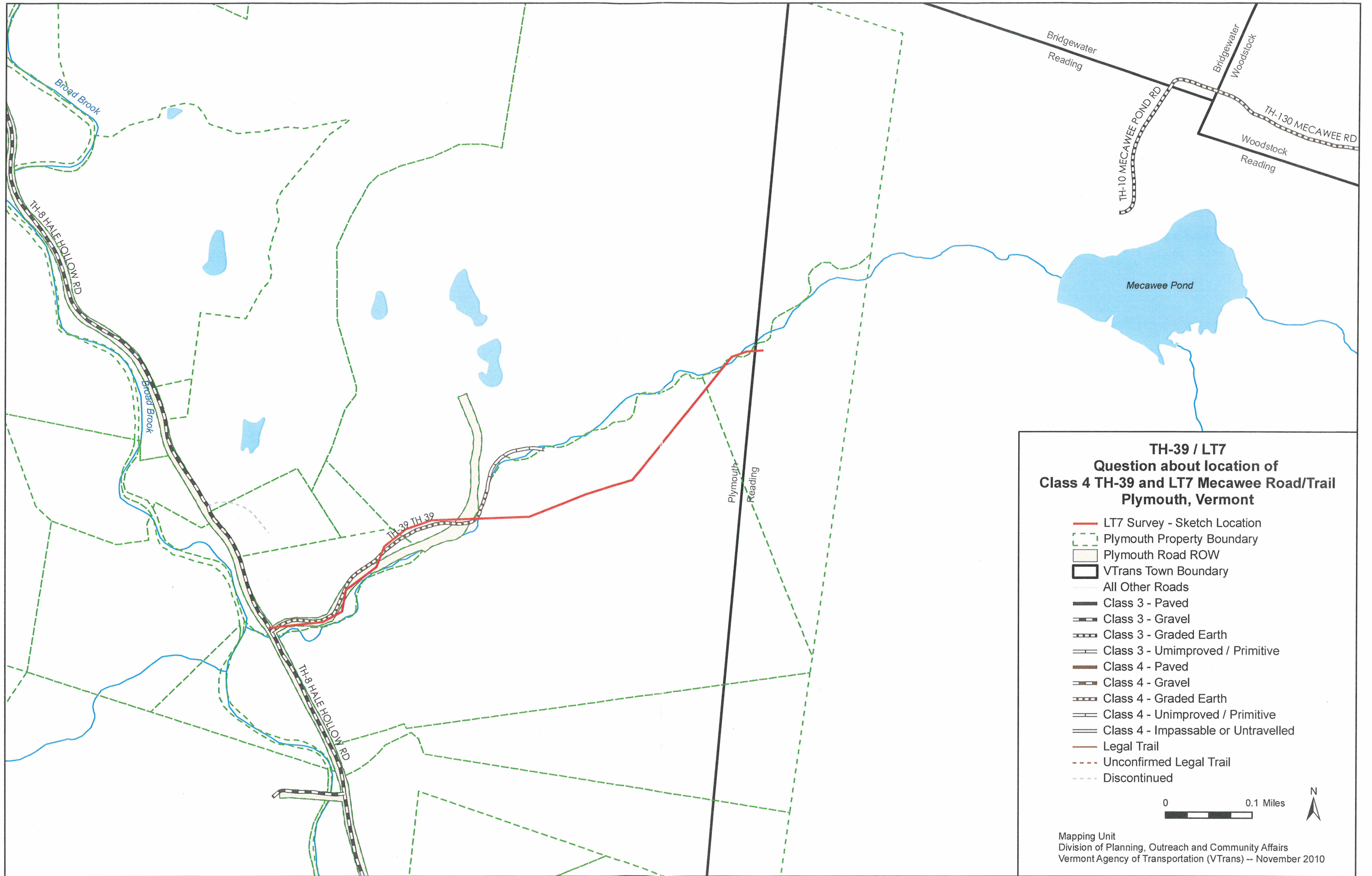
At Plymouth this 16th day of
April A.D. 1984

Donald K. Martin, John S. Sailer, Raymond L. Billings,
Selectmen of the Town of Plymouth

personally appeared, and they acknowledged this instrument, by them sealed and subscribed, to be their free act and deed and the free act and deed of the Town of Plymouth.

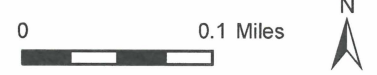
Before me,

Phyllis B. Martin
Notary Public

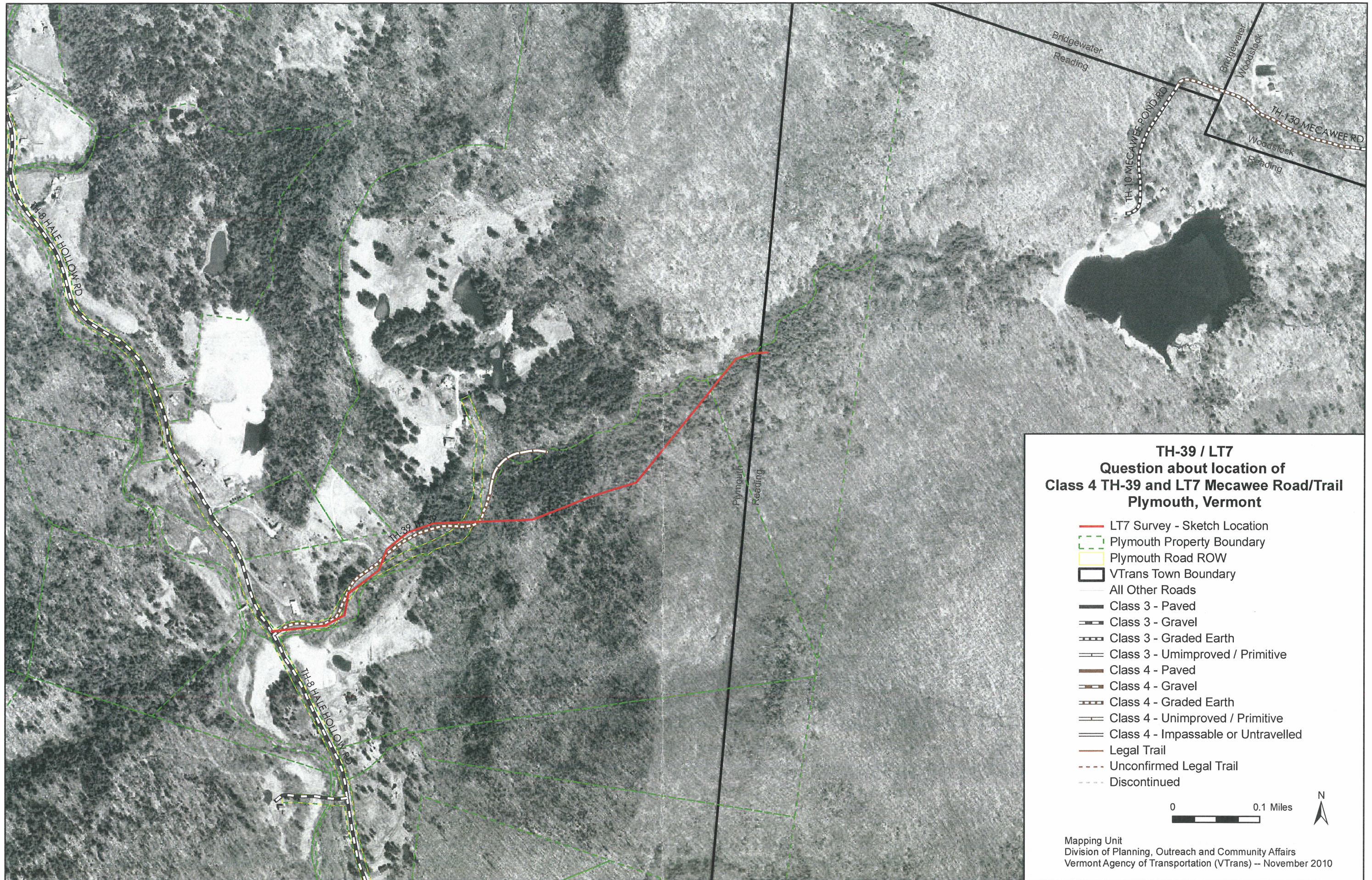


**TH-39 / LT7
Question about location of
Class 4 TH-39 and LT7 MecaWee Road/Trail
Plymouth, Vermont**

- LT7 Survey - Sketch Location
- - - Plymouth Property Boundary
- ▭ Plymouth Road ROW
- ▭ VTrans Town Boundary
- All Other Roads
- ▬ Class 3 - Paved
- ▬ Class 3 - Gravel
- ▬ Class 3 - Graded Earth
- ▬ Class 3 - Unimproved / Primitive
- ▬ Class 4 - Paved
- ▬ Class 4 - Gravel
- ▬ Class 4 - Graded Earth
- ▬ Class 4 - Unimproved / Primitive
- ▬ Class 4 - Impassable or Untravelled
- Legal Trail
- - - Unconfirmed Legal Trail
- - - Discontinued



Mapping Unit
Division of Planning, Outreach and Community Affairs
Vermont Agency of Transportation (VTrans) -- November 2010



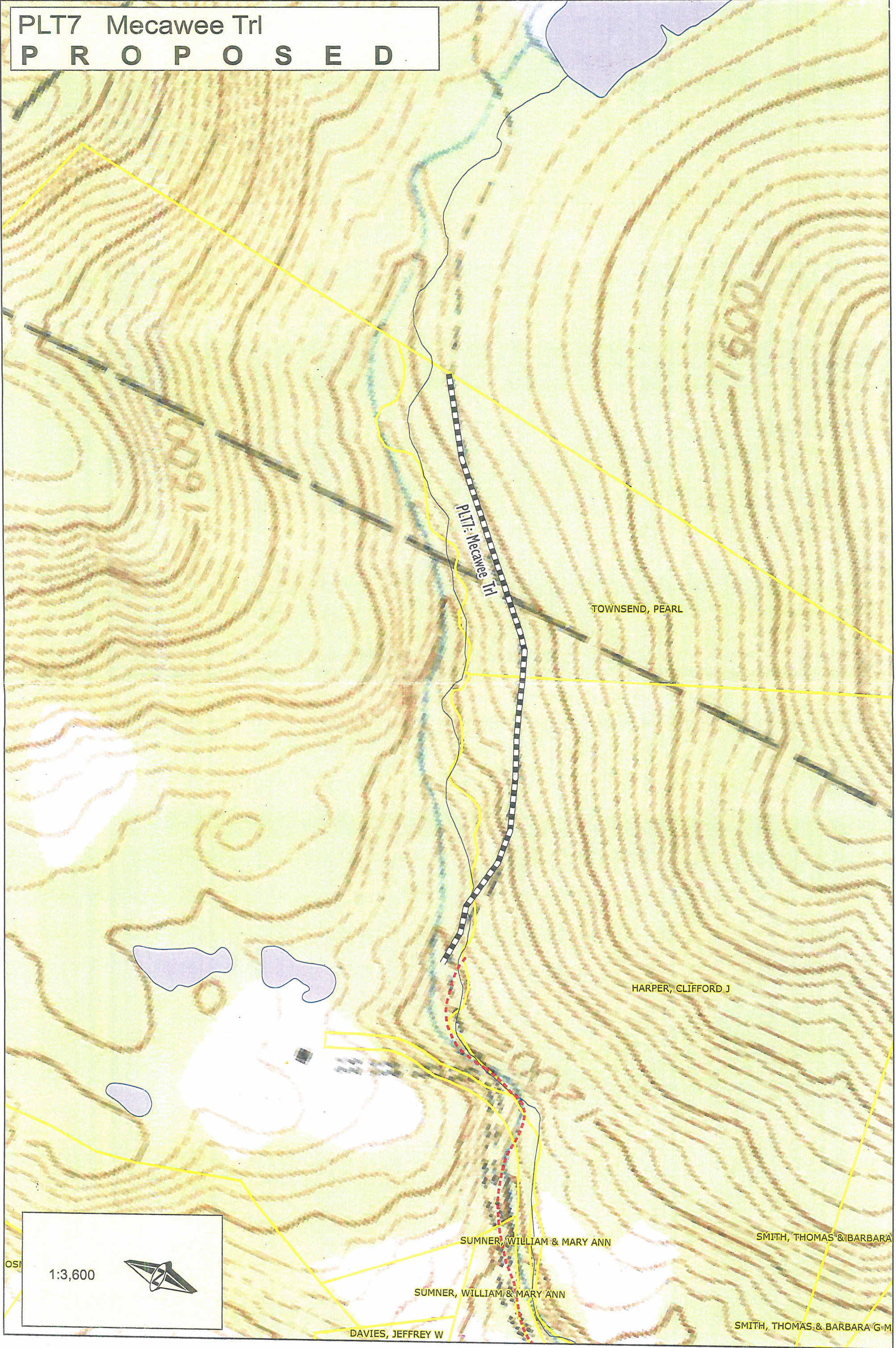
TH-39 / LT7
Question about location of
Class 4 TH-39 and LT7 Mecawee Road/Trail
Plymouth, Vermont

- LT7 Survey - Sketch Location
- - - Plymouth Property Boundary
- Plymouth Road ROW
- VTrans Town Boundary
- All Other Roads
- Class 3 - Paved
- Class 3 - Gravel
- Class 3 - Graded Earth
- Class 3 - Unimproved / Primitive
- Class 4 - Paved
- Class 4 - Gravel
- Class 4 - Graded Earth
- Class 4 - Unimproved / Primitive
- Class 4 - Impassable or Untravelled
- Legal Trail
- - - Unconfirmed Legal Trail
- - - Discontinued



Mapping Unit
 Division of Planning, Outreach and Community Affairs
 Vermont Agency of Transportation (VTrans) -- November 2010

PLT7 Mecawee Trl
P R O P O S E D



OSI
1:3,600

TOWN HWY. NO.	CLASS 3	CLASS 4	LENGTH IN MILES	LEGAL TRAIL NO.	LEGAL TRAIL LENGTH IN MILES
4	3.84		39	1	(0.23)
5	3.40	(1.41)	40	2	(0.93)
6	0.34		41		
7	0.94		41		
8	3.74		42		
9	1.21		43		
10	0.50		44		
11		(0.10)	44		(0.33)
12	0.10		45		
13	0.10		47		
15	3.25	(1.00)	48		(0.79)
16	0.20		49		
17	1.06	(0.21)	50		
18		(0.34)	52		
19		(1.00)	54		(0.80)
20	0.93	(1.40)	55		
21	1.16	(0.14)	57		
22		(1.30)	58		
23	1.34	(0.38)	59		
23		(0.39)	60		
24		(0.15)	61		
25	0.30		62		
26	0.20		63		
27		(2.43)	64		
28	0.27	(0.73)	65		(1.06)
29		(0.80)	66		(1.90)
30	1.10		67		(1.22)
31	0.23		68		(2.02)
32	0.10		69		(0.75)
33		(0.10)	70		(0.40)
34	0.13	(0.12)	71		(1.43)
35	0.10		72		(0.53)
36	0.10		73		(1.34)
37	0.57		74		(0.41)
38	0.65		75		(0.54)
TOTAL			37.13	26.13	

* This portion of town highway is Class 3, but is functionally Class 4

MILEAGE SUMMARY

CLASS 2		
TH-1	0.410	
TH-2	2.700	
TH-3	0.610	
TOTAL CLASS 2	3.720	
CLASS 3		
TOTAL CLASS 3	37.130	
TOTAL TOWN	40.850	
STATE HIGHWAY		
VT-100	9.726	
VT-100A	4.792	
TOTAL STATE HIGHWAY	14.488	
TOTAL STATE	14.488	

TOTAL, TRAVELED HIGHWAYS, FEB. 10, 2011: 55.338
(Excludes Class 4, Legal Trail, and Unidentified Corridor Mileage)

HIGHWAYS

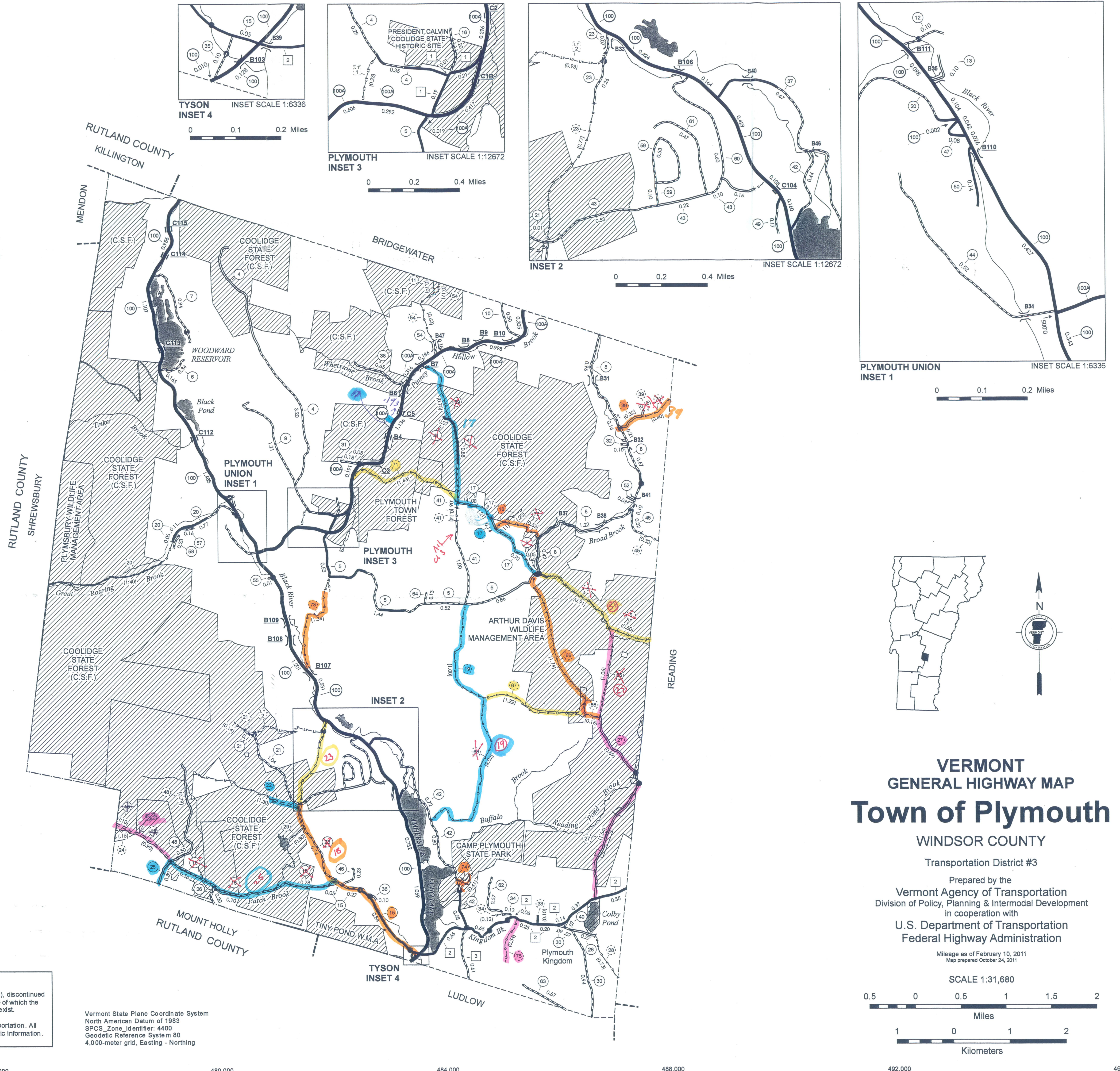
- INTERSTATE
- U.S. ROUTE
- STATE ROUTE
- CLASS 1
- CLASS 2
- CLASS 3
- CLASS 4
- LEGAL TRAIL
- INTERSTATE OR DIVIDED HIGHWAY
- STATE - HARD SURFACE OR PAVED
- TOWN - HARD SURFACE OR PAVED
- GRAVEL
- SOIL OR GRADED AND DRAINED EARTH
- UNIMPROVED OR PRIMITIVE
- IMPASSABLE OR UNTRAVELED
- LEGAL TRAIL
- DISCONTINUED
- HIGHWAY CLASS CHANGE
- RAILROAD
- INACTIVE RAILROAD

- PUBLIC LAND
- POLITICAL SUBDIVISIONS
- STATE BOUNDARY
- COUNTY BOUNDARY
- TOWN BOUNDARY
- VILLAGE BOUNDARY
- URBAN COMPACT BOUNDARY
- WATER BODY
- STREAM OR BROOK
- BRIDGE OR CULVERT
- BRIDGE OR CULVERT GREATER THAN 20'
- BRIDGE OR CULVERT 6' - 20'
- TOWN SHORT STRUCTURE
- B34 / C34 STATE BRIDGE OR CULVERT IDENTIFIER
- B34 / C34 TOWN BRIDGE OR CULVERT IDENTIFIER
- W.M.A. WILDLIFE MANAGEMENT AREA
- FEDERAL CLASSIFICATION IDENTIFIER
- FAU URBAN ARTERIAL OR COLLECTOR
- MA MINOR ARTERIAL
- MJC MAJOR COLLECTOR
- MNC MINOR COLLECTOR
- PA PRINCIPAL ARTERIAL

STRUCTURES - SURFACE WATER NOTE:
STRUCTURES: Town short structures (bridges or culverts from 6-feet to less than 20-feet) are drawn from the Vermont Online Bridge & Culvert Inventory Tool (VOBCIT) database.
NOTE: Town shorts are not consistently tagged within VOBCIT.
SURFACE WATERS: The surface waters are from the Vermont Hydrological Dataset (VHD). Only the named streams are shown.

DISCLAIMER:
The untraveled highways (laid-out town highways), discontinued highways, and legal trails shown hereon are those of which the Agency of Transportation has record; others may exist.
Highway and bridge data by the Agency of Transportation. All other data from the Vermont Center for Geographic Information.

Vermont State Plane Coordinate System
North American Datum of 1983
SPCS Zone Identifier: 4400
Geodetic Reference System: 80
4,000-meter grid, Easting - Northing



VERMONT GENERAL HIGHWAY MAP
Town of Plymouth
WINDSOR COUNTY

Transportation District #3
Prepared by the
Vermont Agency of Transportation
Division of Policy, Planning & Intermodal Development
in cooperation with
U.S. Department of Transportation
Federal Highway Administration

Mileage as of February 10, 2011
Map prepared October 24, 2011
SCALE 1:31,680
0.5 0 0.5 1 1.5 2 Miles
1 0 1 2 Kilometers