

**CERTIFICATE OF HIGHWAY MILEAGE
YEAR ENDING FEBRUARY 10, 2011**

Fill out form, make and file copy with the Town Clerk, and mail ORIGINAL, before February 20, 2011 to:
Vermont Agency of Transportation, Division of Planning, Outreach and Community Affairs, One National Life
Drive, Montpelier, VT 05633.

We, the members of the legislative body of PLYMOUTH in WINDSOR County
on an oath state that the mileage of highways, according to Vermont Statutes Annotated, Title 19, Section 305,
added 1985, is as follows:

PART I - CHANGES TOTALS - Please fill in and calculate totals.

Town Highways	Previous Mileage	Added Mileage	Subtracted Mileage	Total	Scenic Highways
Class 1	0.000	0.000	0.000	0.000	0.000
Class 2	3.720	0.000	0.000	3.720	0.000
Class 3	37.13	0.00	0.00	37.13	0.000
State Highway	14.488	0.000	0.000	14.488	0.000
Total	55.338			55.338	0.000
* Class 1 Lane	0.000	12.71		26.13	0.000
* Class 4	13.42	12.99	0.00	26.41	0.000
* Legal Trail	0.00	1.16	0.00	1.16	0.000
* Unidentified Corridor	0.00				

* Mileage for Class 1 Lane, Class 4, Legal Trail, and Unidentified Corridor classifications are NOT included in total.

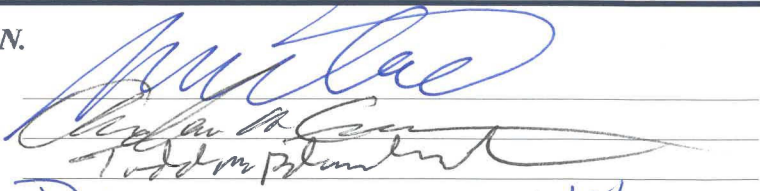
PART II - INFORMATION AND DESCRIPTION OF CHANGES SHOWN ABOVE.

- NEW HIGHWAYS:** Please attach Selectmen's "Certificate of Completion and Opening".
- DISCONTINUED:** Please attach SIGNED copy of proceedings (minutes of meeting).
- RECLASSIFIED/REMEASURED:** Please attach SIGNED copy of proceedings (minutes of meeting).
- SCENIC HIGHWAYS:** Please attach a copy of order designating/discontinuing Scenic Highways.

IF THERE ARE NO CHANGES IN MILEAGE: Check box and sign below.]

PART III - SIGNATURES - PLEASE SIGN.

Selectmen/ Aldermen/ Trustees Signatures:

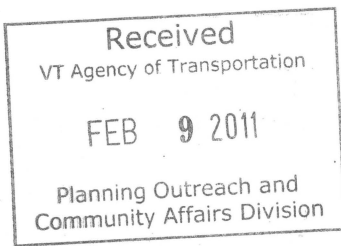


T/C/V Clerk Signature: Barbara L. Rabtoy Date Filed: 2/8/11

Please sign ORIGINAL and return it for Transportation signature.

AGENCY OF TRANSPORTATION APPROVAL: Signed copy will be returned to T/C/V Clerk.

APPROVED:  DATE: 6/30/2011
Representative, Agency of Transportation
Johnathan Croft



Vermont Statutes Annotated

19 V.S.A. § 305. Measurement and inspection

§ 305. Measurement and inspection

(a) After reasonable notice to the selectboard, a representative of the agency may measure and inspect the class 1, 2, and 3 town highways in each town to verify the accuracy of the records on file with the agency. Upon request, the selectboard or their designee shall be permitted to accompany the representative of the agency during the measurement and inspection. The agency shall notify the town when any highway, or portion of a highway, does not meet the standards for its assigned class. If the town fails, within one year, to restore the highway or portion of the highway to the accepted standard, or to reclassify, or to discontinue, or develop an acceptable schedule for restoring to the accepted standards, the agency for purposes of apportionment under section 306 of this title shall deduct the affected mileage from that assigned to the town for the particular class of the road in question.

(b) Annually, on or before February 10, the selectboard shall file with the town clerk a sworn statement of the description and measurements of all class 1, 2, 3, and 4 town highways and trails then in existence, including any special designation such as a throughway or scenic highway. When class 1, 2, 3, or 4 town highways, trails, or unidentified corridors are accepted, discontinued, or reclassified, a copy of the proceedings shall be filed in the town clerk's office and a copy shall be forwarded to the agency.

(c) All class 1, 2, 3, and 4 town highways and trails shall appear on the town highway maps by July 1, 2015.

(d) At least 45 days prior to first including a town highway or trail that is not clearly observable by physical evidence of its use as a highway or trail and that is legally established prior to February 10, 2006 in the sworn statement required under subsection (b) of this section, the legislative body of the municipality shall provide written notice and an opportunity to be heard at a duly warned meeting of the legislative body to persons owning lands through which a highway or trail passes or abuts.

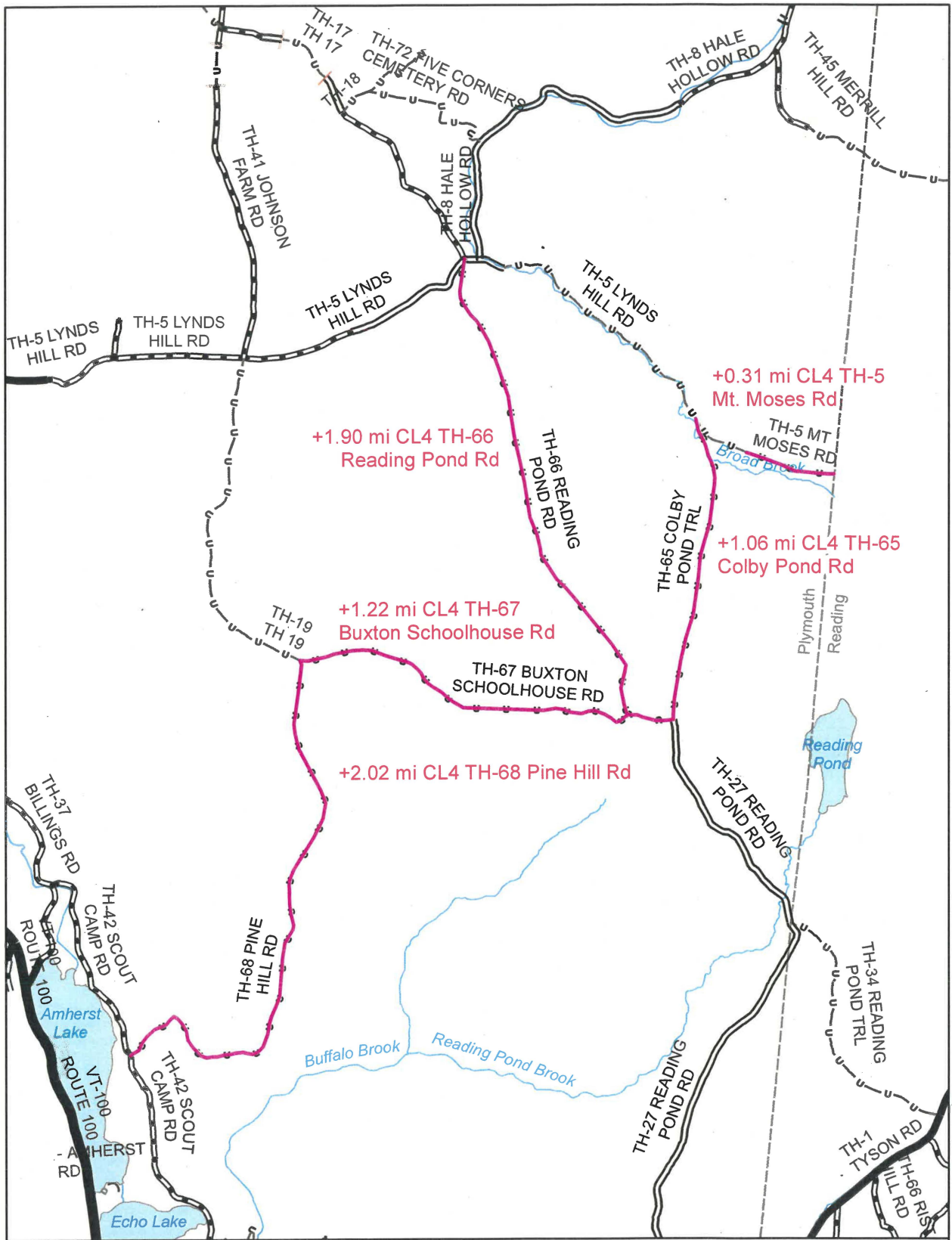
(e) The agency shall not accept any change in mileage until the records required to be filed in the town clerk's office by this section are received by the agency. A request by a municipality to the agency for a change in mileage shall include a description of the affected highway or trail, a copy of any surveys of the affected highway or trail, minutes of meetings at which the legislative body took action with respect to the changes, and a current town highway map with the requested deletions and additions sketched on it. A survey shall not be required for class 4 town highways that are legally established prior to February 10, 2006. All records filed with the agency are subject to verification in accordance with subsection (a) of this section.

(f) The selectboard of any town who are aggrieved by a finding of the agency concerning the measurement, description or classification of a town highway may appeal to the transportation board by filing a notice of appeal with the executive secretary of the transportation board.

(g) The agency shall provide each town with a map of all of the highways in that town together with the mileage of each class 1, 2, 3, and 4 highway, as well as each trail, and such other information as the agency deems appropriate.

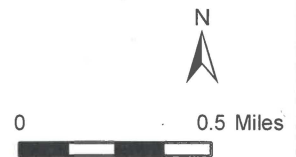
Excerpt of 19 V.S.A. § 305 - *Measurement and inspection* from Vermont Statutes Online located at – <http://www.leg.state.vt.us/statutes/fullsection.cfm?Title=19&Chapter=003&Section=00305>

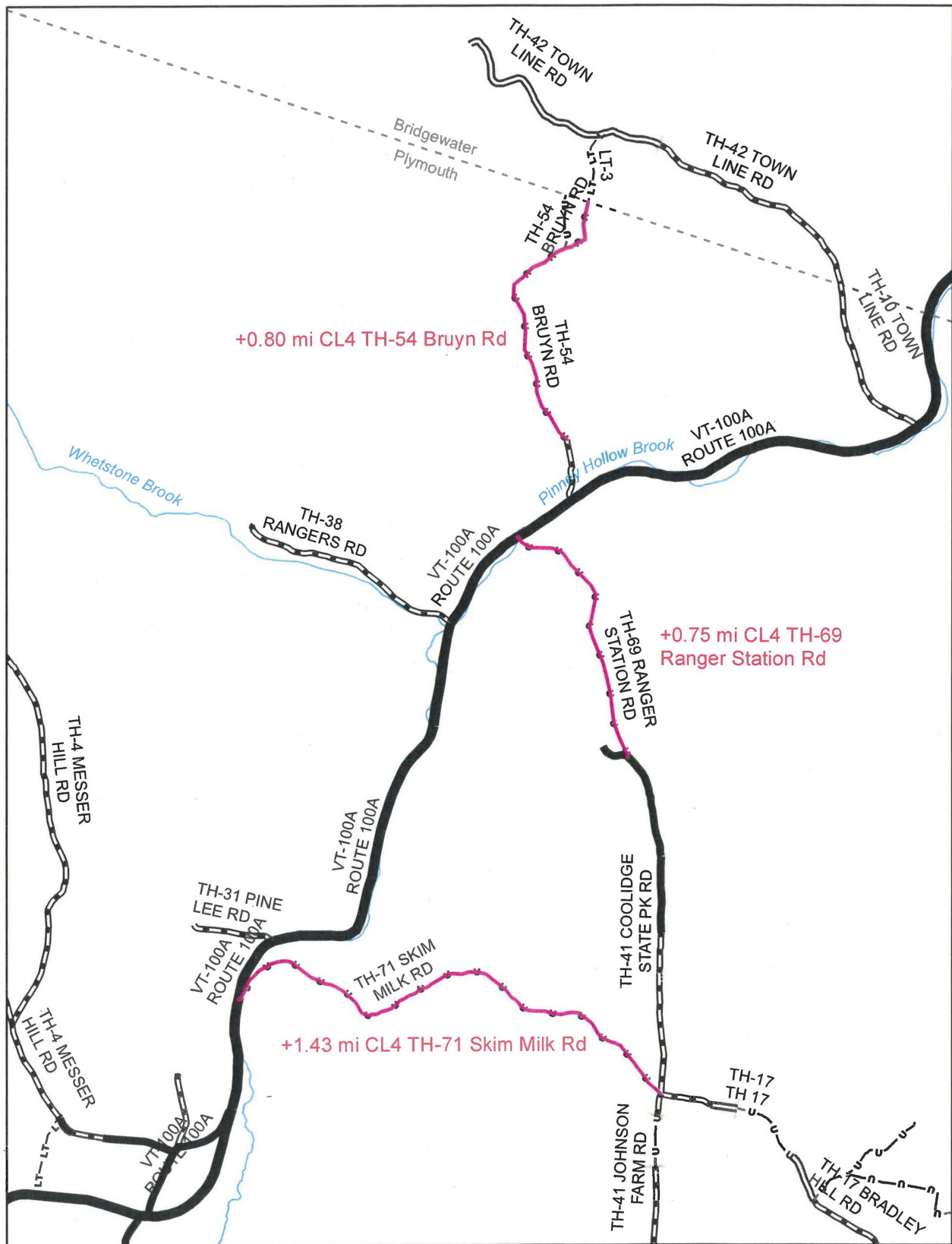
12/20/2010



**Mileage Certificate Change 2011
PLYMOUTH**

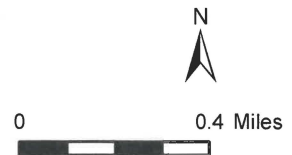
Mapping Unit
 Division of Policy and Planning
 Vermont Agency of Transportation -- April 2011

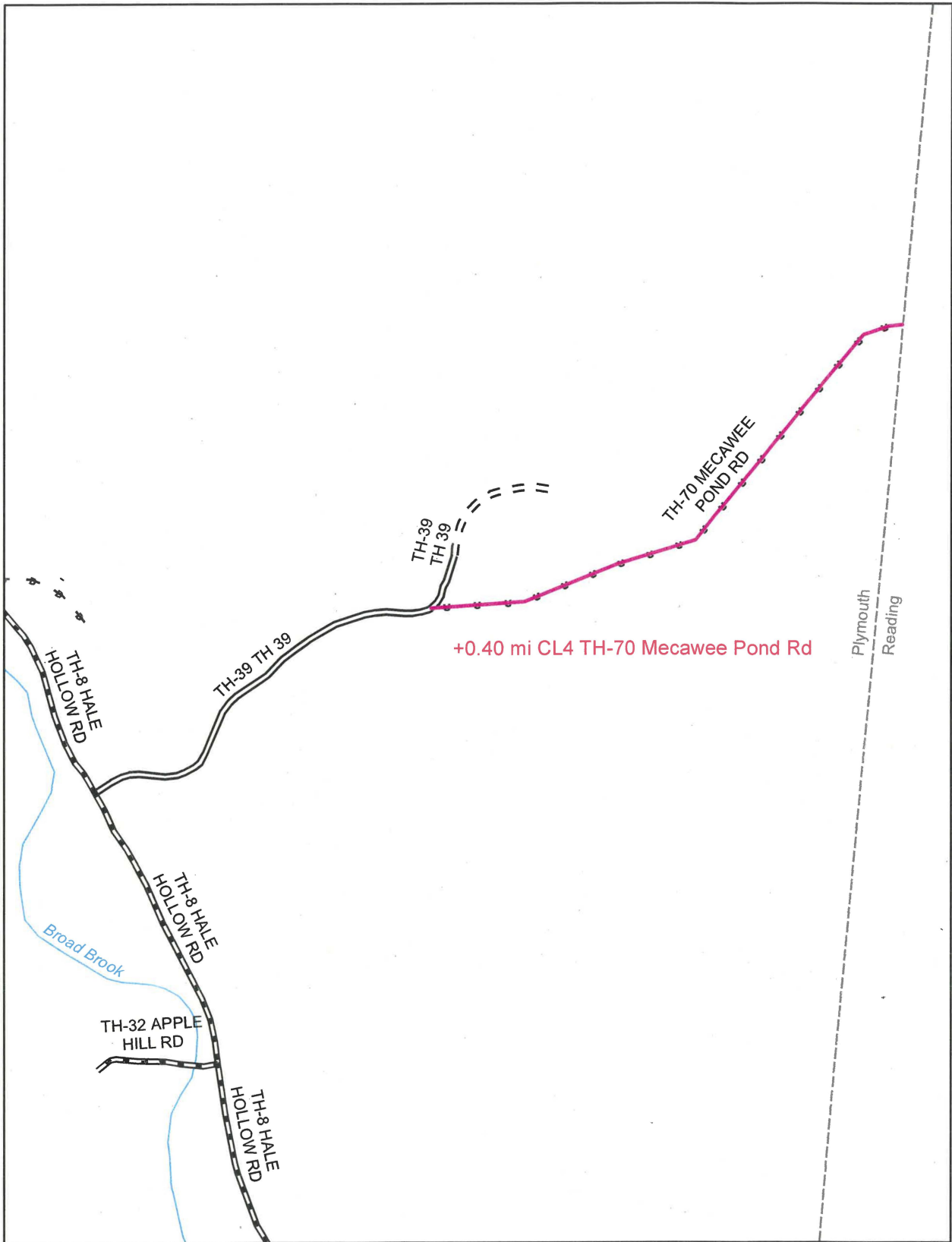




**Mileage Certificate Change 2011
PLYMOUTH**

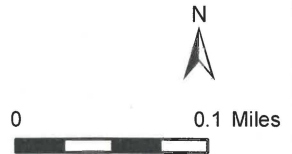
Mapping Unit
 Division of Policy and Planning
 Vermont Agency of Transportation -- April 2011

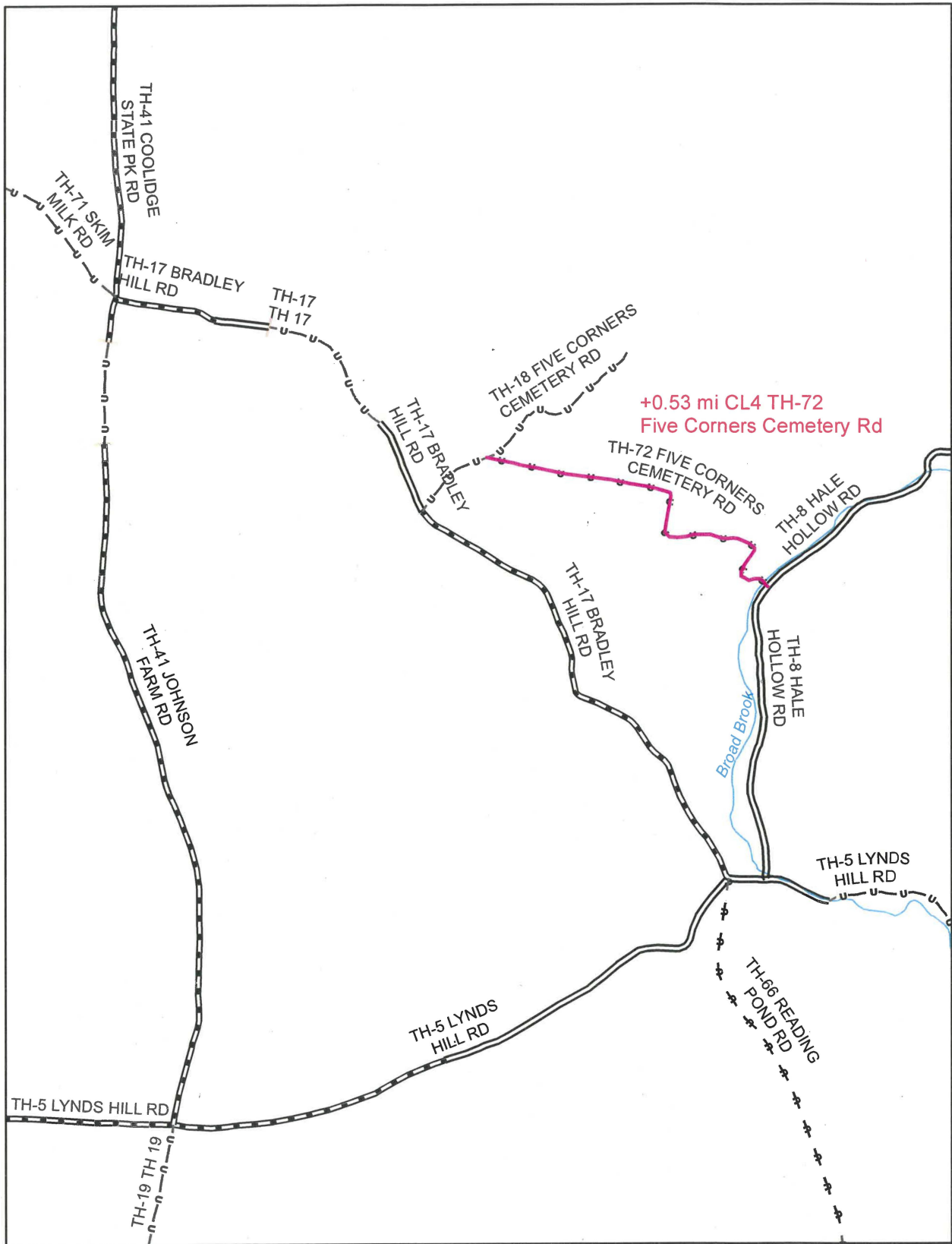




**Mileage Certificate Change 2011
PLYMOUTH**

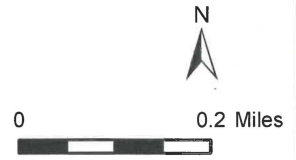
Mapping Unit
 Division of Policy and Planning
 Vermont Agency of Transportation -- April 2011

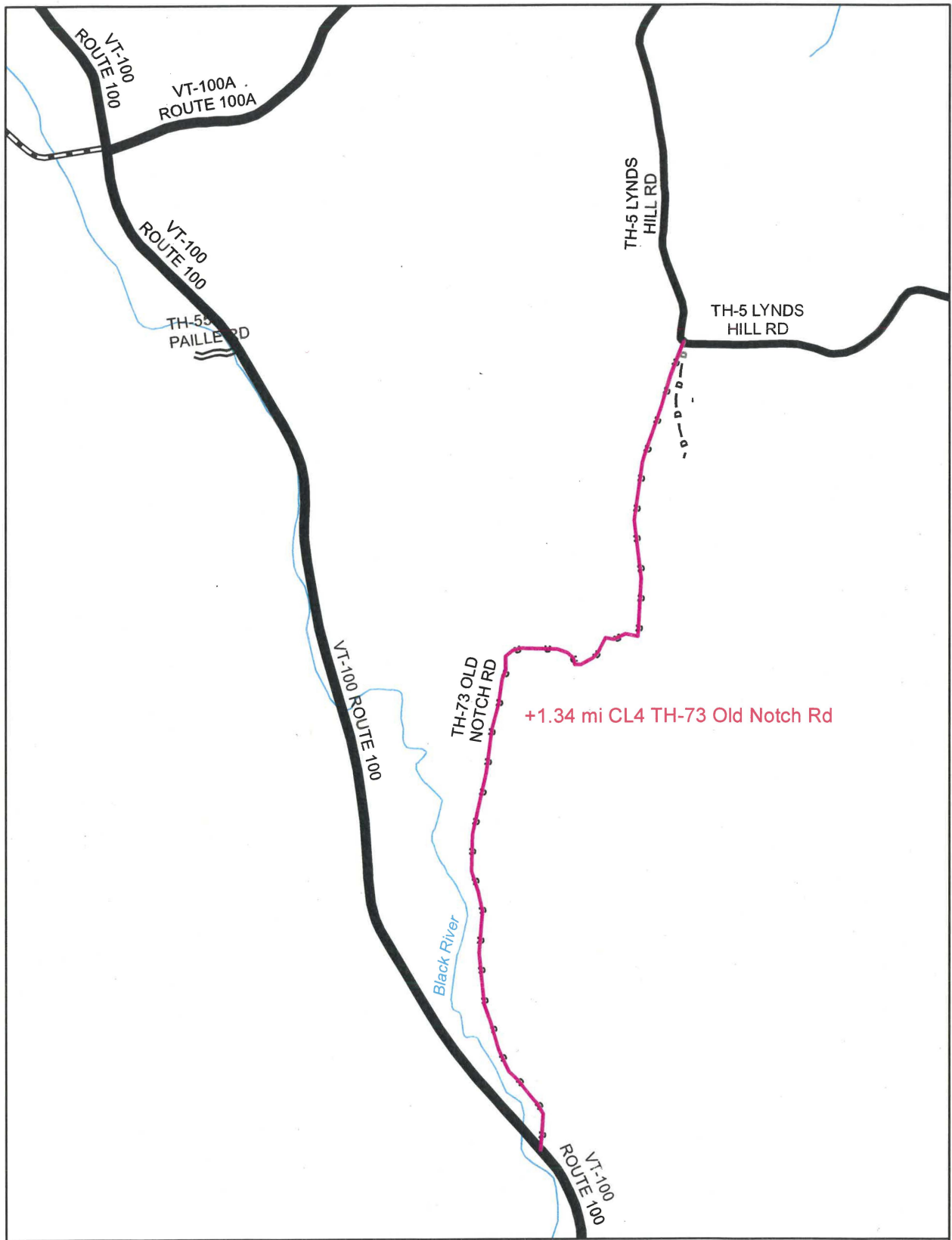




**Mileage Certificate Change 2011
PLYMOUTH**

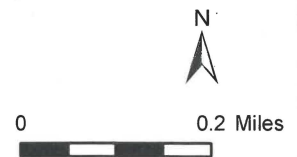
Mapping Unit
 Division of Policy and Planning
 Vermont Agency of Transportation -- April 2011

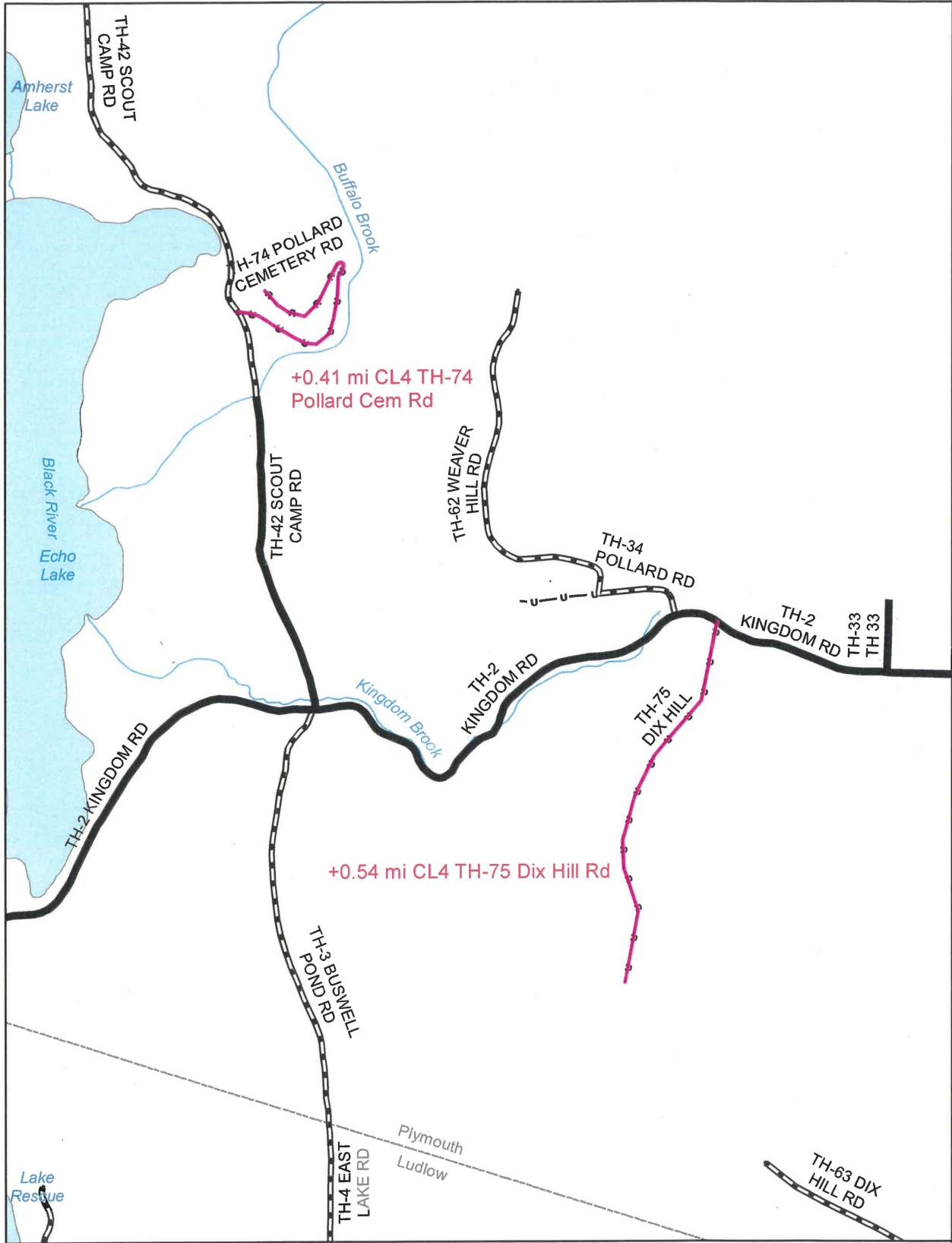




**Mileage Certificate Change 2011
PLYMOUTH**

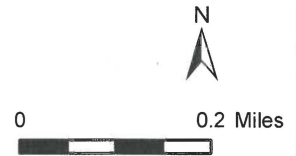
Mapping Unit
 Division of Policy and Planning
 Vermont Agency of Transportation -- April 2011

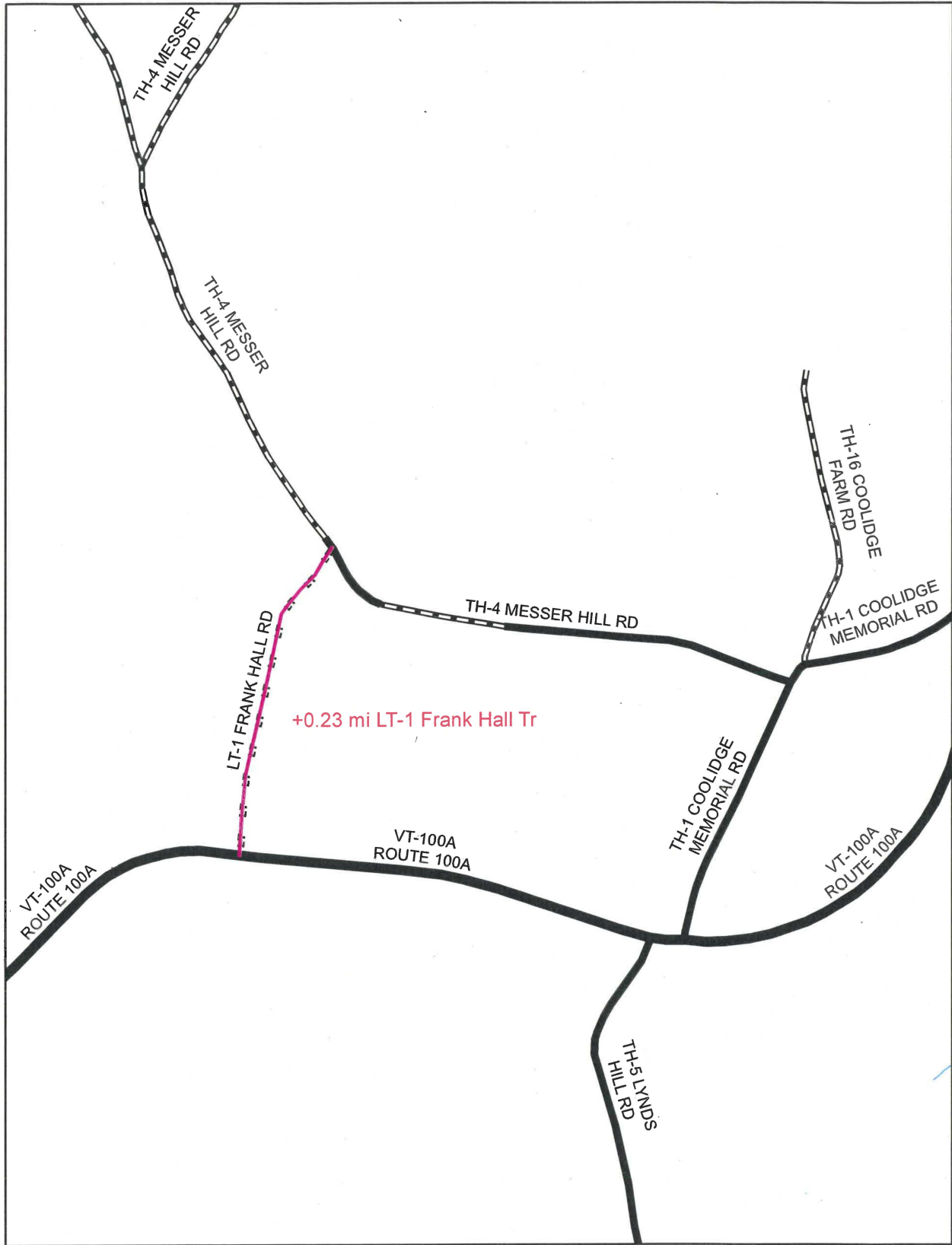




**Mileage Certificate Change 2011
PLYMOUTH**

Mapping Unit
 Division of Policy and Planning
 Vermont Agency of Transportation -- April 2011

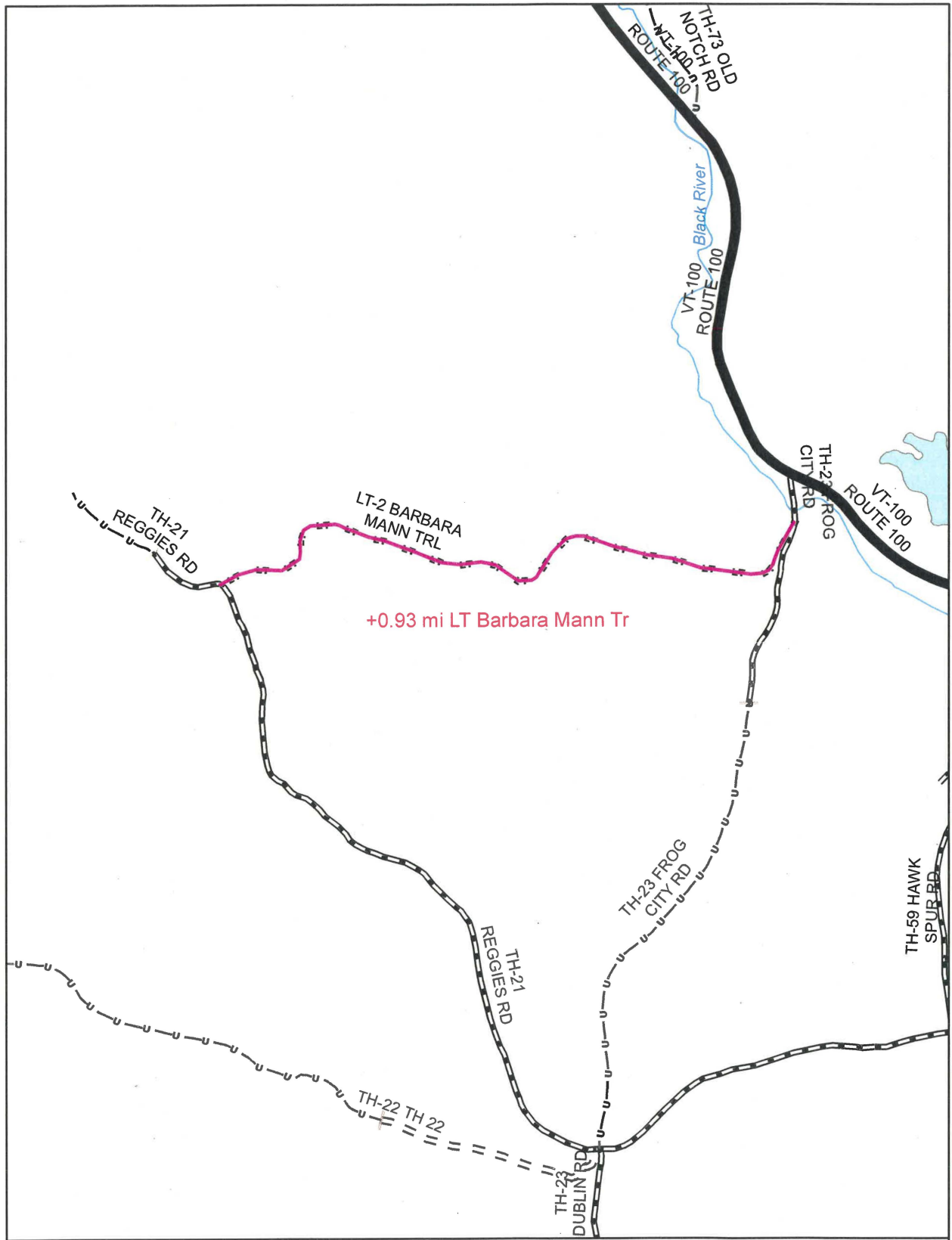




**Mileage Certificate Change 2011
PLYMOUTH**

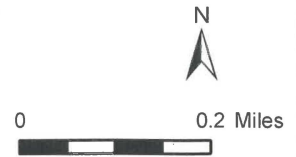
Mapping Unit
Division of Policy and Planning
Vermont Agency of Transportation -- April 2011





**Mileage Certificate Change 2011
PLYMOUTH**

Mapping Unit
 Division of Policy and Planning
 Vermont Agency of Transportation -- April 2011



Certificate of Mileage Info Plymouth Feb 2012

Notes by S. Monahan

4/5/2011

- PTH1 (Colby Pond Rd)- Class 4	1.06mi	TH-65	
- PTH2 (Reading Pond Rd)-Class 4	1.90mi	TH-66	
- PTH3 (Buxton Schoolhouse Rd) C 4	1.22mi	TH-67	
- PTH4 (Pine Hill Rd)- Class 4	2.02mi	TH-68	
- PTH5 (Ranger St Rd)- Class 4	0.75mi	TH-69	
- PTH6 (Mt Moses Rd)- Class 4	0.31mi	TH-5	
- PTH7 (Mecawee Pond)-L. Trail/C 4	0.68mi	0.40mi	TH-70
- PTH8 (Skim Milk Rd)-Class 4	1.43mi	TH-71	
- PTH11 (5 Corners Cem Rd)-C 4	0.53mi	TH-72	
- PTH12 (Old Notch Rd)- Class 4	1.34mi	TH-73	
- PTH13 (Pollard Cem Rd) Class 4	0.41mi	TH-74	
- PTH14 (Dix Hill)-Class 4 Pent	0.54mi	TH-75	
- PTH15 (Bruyn Rd)-Class 4	0.80mi	TH-54	
- PTH16 (Frank Hall Tr)-Legal Trail	0.23mi	✓	LT-1
- PTH17 (Barbara Mann Tr)-L. Trail	0.93mi	✓	LT-2
	Total Class-4	12.99mi(includes Mecawee)	12.71
	Total Legal Trail	1.16mi	

Certificate of Mileage Info Plymouth Feb 2012

PTH1 (Colby Pond Rd)- Class 4	1.06mi
PTH2 (Reading Pond Rd)-Class 4	1.90mi
PTH3 (Buxton Schoolhouse Rd) C 4	1.22mi
PTH4 (Pine Hill Rd)- Class 4	2.02mi
PTH5 (Ranger St Rd)- Class 4	0.75mi
PTH6 (Mt Moses Rd)- Class 4	0.31mi
PTH7 (Mecawee Pond)-L. Trail /C 4	0.68mi
PTH8 (Skim Milk Rd)-Class 4	1.43mi
PTH11 (5 Corners Cem Rd)-C 4	0.53mi
PTH12 (Old Notch Rd)- Class 4	1.34mi
PTH13 (Pollard Cem Rd) Class 4	0.41mi
PTH14 (Dix Hill)-Class 4 Pent	0.54mi
PTH15 (Bruyn Rd)-Class 4	0.80mi
PTH16 (Frank Hall Tr)-Legal Trail	0.23mi
PTH17 (Barbara Mann Tr)-L. Trail	0.93mi
Total Class-4	12.99mi(includes Mecawee)
Total Legal Trail	1.16mi



State of Vermont
Division of Planning, Outreach and Community Affairs

Mapping Unit

1 National Life Drive
Montpelier, VT 05633-5001
<http://www.aot.state.vt.us>

Telephone: 802-828-2109
Fax: 802-828-2334
Email: sara.moulton@state.vt.us

Agency of Transportation

November 19, 2010

Chair, Selectboard
Plymouth, c/o Town Clerk
68 Town Office Rd
Plymouth, VT 05056

Dear Selectboard:

After reviewing the documentation supplied by the Selectboard of the Town of Plymouth in their letters to the VTrans Mapping Unit dated July 12, 2010 and November 15, 2010, the following questions have arisen .

PLT/PTH7 (Mecawee Pond Rd or Trail)

(PLT = Plymouth Trail, PTH = Plymouth Town Highway)

I have several questions about this addition. First, what classification does the town want applied to this? One document states that it is to be added as a trail, another document refers to it as a Class 4.

Also, I need clarification about the appropriate location and alignment of TH-39 (please see enclosed map titled "TH-39 / LT7"). Is the current alignment as drawn on the map correct or should it follow the ROW as defined by the Plymouth parcel data?

In plotting the alignment of LT7 from the information contained in the original survey and laying out document dated 1847, I am coming up with a different location and alignment than what is shown on the map provided by the town titled "PLT7 Mecawee Trl" (copy enclosed).

Please provide clarification regarding the appropriate alignments for TH-39 and LT7.

PTH13 (Pollard Cemetery Rd) and PTH14 (Dix Hill)

The documentation consisting of the original survey and laying out documents are adequate for us to add these roads to the town highway map as follows:

PTH13 (Pollard Cemetery Rd) Class 4 0.41 miles

PTH14 (Dix Hill) - Class 4 Pent 0.54 miles

PTH, PTH, PTH5, PTH6, PTH8, PTH11, PTH12, PTH15, TLT16 and PLT17

These roads do not have enough historical documentation to support adding them to the town highway map, but may be included in the 2011 edition. In its letter dated November 15, 2010, the Town of Plymouth Selectboard noted:

"We realize not all these roads have been substantiated by a formal survey; however, extensive research has been done to find surveys including town land records and select board minutes. The Plymouth selectboard understands that we are adding these roads at our own peril."

At this point, if these roads are added to the 2011 Certificate of Highway Mileage, the VTrans Mapping Unit plans to add them to the 2011 town highway map.

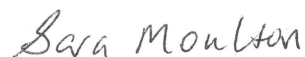
The following is a summary of the roads and the mileage we have calculated for them:

- PTH1 (Colby Pond Rd) - Class 4 1.06 miles
- PTH2 (Reading Pond Rd) - Class 4 1.90 miles
- PTH3 (Buxton Schoolhouse Rd) - Class 4 1.22 miles
- PTH4 (Pine Hill Rd) - Class 4 2.02 miles
- PTH5 (Ranger Station Rd) - Class 4 0.75 miles
- PTH6 (Mt. Moses Rd) - Class 4 0.31 miles
- PTH8 (Skim Milk Rd) - Class 4 1.43 miles
- PTH11 (Five Corners Cemetery Rd) - Class 4 0.53 miles
- PTH12 (Old Notch Rd) - Class 4 1.34 miles
- PTH15 (Bruyn Rd) - Class 4 0.80 miles
- PLT16 (Frank Hall Trl) - Legal Trail 0.23 miles
- PLT17 (Barbara Mann Trl) - Legal Trail 0.93 miles

Please forward clarification regarding the questions above and we will prepare the 2011 Mileage Certificate with these changes noted on it.

Please let me know if you have any questions.

Sincerely,



Sara Moulton
Mapping & GIS Specialist

TOWN OF PLYMOUTH



BIRTHPLACE OF CALVIN COOLIDGE
30TH PRESIDENT
OF THE UNITED STATES

68 Town Office Road
Plymouth, Vermont 05056

Tel. (802) 672-3655

Fax (802) 672-5466

Received

VT Agency of Transportation

NOV 17 2010

Planning Outreach and
Community Affairs Division

November 15 2010

Johnathan Croft
AOT GIS Database Administrator
Vtrans Mapping Unit
One National Life Drive
Montpelier, VT 05633-5001

Dear Mr. Croft

As a follow-up to our meeting with you this summer and the Selectboard letter of July 12, 2010, the ancient roads committee has continued research and plotting surveys of old roads. Also, as suggested by you, as these activities are completed we are forwarding to you the research and Selectboard action. These roads along with ones submitted in July, a total of 15 road segments (not including Crown Pt.), complete Plymouth's submission of "ancient roads". Total new mileage will be included with our certificate of mileage in February. This information is supplemental to folders on these roads submitted in February 2009.

As a reminder, the approved roads are labeled "LT" on the folders and "PTH/PLT" on the map prepared by Two Rivers (you have a copy). This notation was used locally to avoid confusion. These roads have all been approved by the Selectboard (minutes in the folders). Some roads have substantiating surveys found in Plymouth Town Records. Some have partial surveys and are known to exist, are being used, and have been presented to landowners without objection; however, surveys could not be found for all the roads after extensive research.

LT/PLT 1(Colby Pond) and LT/PTH 4 (Pine Hill) have partial surveys which are attached. Also attached is a detailed description of each road.

LT/PTH 2, LT/PTH 5, LT/PTH 11, LT/PTH 15, LT/PTH 16 and LT/PTH 17 are Plymouth roads which are being used, provide access to properties, are clearly visible (see pictures in folders) but have no(found) surveys. These roads were presented at a public hearing in November 2008 without objection. LT/PTH 1 and

sections of LT/PTH 4 are used and maintained by a local snowmobile company which employs local residents. These are approved Vast/Vasa trails. LT/PTH 11 provides access to Plymouth Five Corners cemetery.

The Plymouth Selectboard feels **strongly** that these roads are, in fact, Plymouth class 4 roads or trails which were previously mapped as indicated on several old town maps, but then deleted from the State maps per previous instructions.

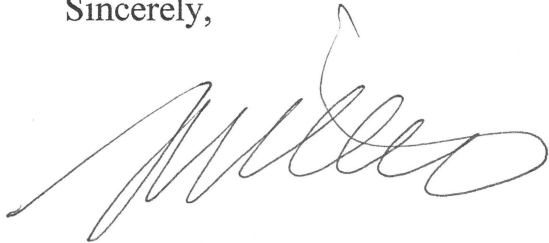
The following roads are being dropped from our request to include on the Vtrans map: LT/PTH9 Johnson Rd. and LT/PTH 18 Reggie and Beyond. LT/PTH 10 Crown Pt. road is still being mediated.

Please annotate these roads on Plymouth's Vtrans map for eventual inclusion with the certificate of mileage in February. If you have any questions, feel free to contact any selectman or Russ Tonkin by email.

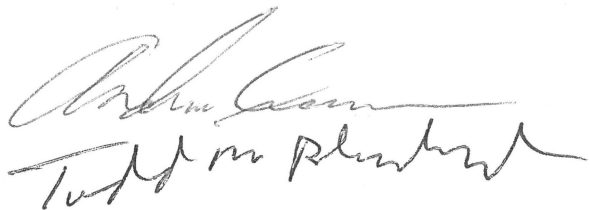
We realize not all these roads have been substantiated by a formal survey; however, extensive research has been done to find surveys including town land records and select board minutes. The Plymouth selectboard understands that we are adding these roads at our own peril.

Thank you for your help and cooperation with this matter.

Sincerely,



Plymouth Selectboard



LT 1 (Colby Pond Road)approved 3/31/2008 class 4

Road starting at Plymouth five corners and running along Broad Brook for approximately 1.2mi., then right at fork just after bridge. The road continues south along an old jeep trail approximately 1.17 mi. ending at Buxton School House.

LT 2 (Reading Pond/Provost Hill Road)approved 3/31/2008 class 4

Road starting at Buxtin School House, traveling west approximately 0.2mi., then turning right(north) and running along an old jeep trail approximately 1.89mi., ending at Lynds Hill Rd just west of Plymouth five corners.

LT 4 (Pine Hill Road)approved 3/31/2008 class 4

Road starting where Buxton School House Road intersects Pine Hill Rd., running south for approximately 2mi., then turning west for approximately 0.3mi., then northwest for approximately 0.2mi., then back south for approximately 0.3mi. ending at Scout Camp Road.

LT 5 (Ranger Station to Rt 100A)

Starting at the Coolidge State Park ranger station on Bradley Hill Rd., running north approximately 1.22 mi., ending at Rt 100A.

Approved 5/12/2008 with the following restrictions:

Class 4 road with the restriction that through the 0.4mi section on State property, there will be no vehicle weighing greater than 1000# unless for emergency or maintenance purposes.

LT 11 (Cemetary Trail)approved 6/23/2008 class 4

Road starting at Plymouth Five Corners Cemetary Rd. running south east approximately 0.75 mi., ending at Hale Hollow Road at bridge structure by Broad Brook.

LT 15 (Bruyn Rd)approved 1/19/2009 class 4

Starting at Rt 100A and running northeast approx. 1.1mi ending at the Bridgewater Town line.

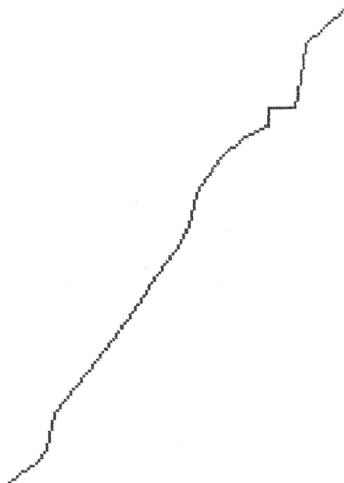
LT 16 (Frank Hall/100A-Messer Hill)approved 1/19/2009 legal trail

Starting at Rt 100A and running north approx. 0.23mi ending at Messer Hill Rd.

LT 17 (Frog City to Reggie's Rd)(Barbara Mann/Mahon)approved 8/04/08 legal trail

Starting at Frog City as per survey map and continuing up hill approx 1mi, northwest to Reggie's Rd.

From John O Trinney to notch of road near Hemingways

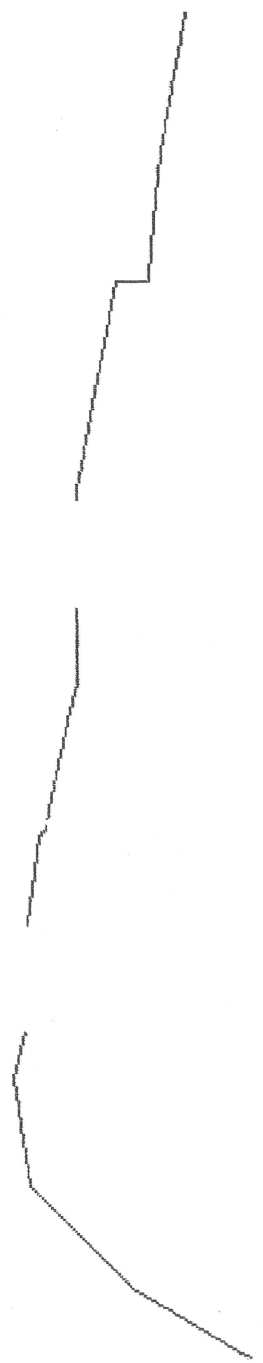


0 _____ 960

Vol 5 1st Book		
Plymouth Land Records		
survey page 224-9		

Partial Pine Hill TH19 and beyond

Beg at
John
Peterson's
west line
to East
line of
James
Williams



0 _____ 960

Vol 5 1st Book		
Plymouth Land Records		
survey page 32		

Partial Pine Hill

Beg at Reuban Brist? ending where intersects rd thru Jonas Willis land E/W on the northerly line of Lewis Williams dwelling.



0 _____ 960

Vol 5 1st B		
Plymouth Land Records		
survey page 31		

Colby Pond

TOWN OF PLYMOUTH



68 Town Office Road
Plymouth, Vermont 05056
Tel. (802) 672-3655
Fax (802) 672-5466

BIRTHPLACE OF CALVIN COOLIDGE
30TH PRESIDENT
OF THE UNITED STATES

July 12, 2010

Johnathan Croft
AOT GIS Database Administrator
Vtrans Mapping Unit
One National Life Drive
Montpelier, VT 05633-5001

Dear Mr. Croft

The ancient roads committee has continued research and plotting surveys since their meeting with you in the spring. As suggested by you, when these activities are completed we will forward to you the research and Selectboard action. These roads will also then be submitted with our certificate of mileage in February. This information is supplemental to folders on these roads submitted in February 2009.

The approved roads are labeled "LT" on the folders and "PTH/PLT" on the map prepared by Two Rivers. This notation was used locally to avoid confusion. To clarify a previous misunderstanding, these roads have all been approved by the Selectboard (minutes in the folders). Some roads have substantiating surveys found in Plymouth Town Records. Some are known to exist, are being used, and have been presented to landowners without objection; however, surveys could not be found after extensive research.

LT/PLT 7, LT/PTH 13, and LT/PTH 14 have surveys which are attached. LT/PLT 7 is actually an extension of the existing town road TH which now continues to the Reading town line, an additional 0.24mi. LT/PTH 14's survey indicates the road extends 0.5375mi from Kingdom Rd south toward Dix Hill, not the 0.85 mi originally specified.

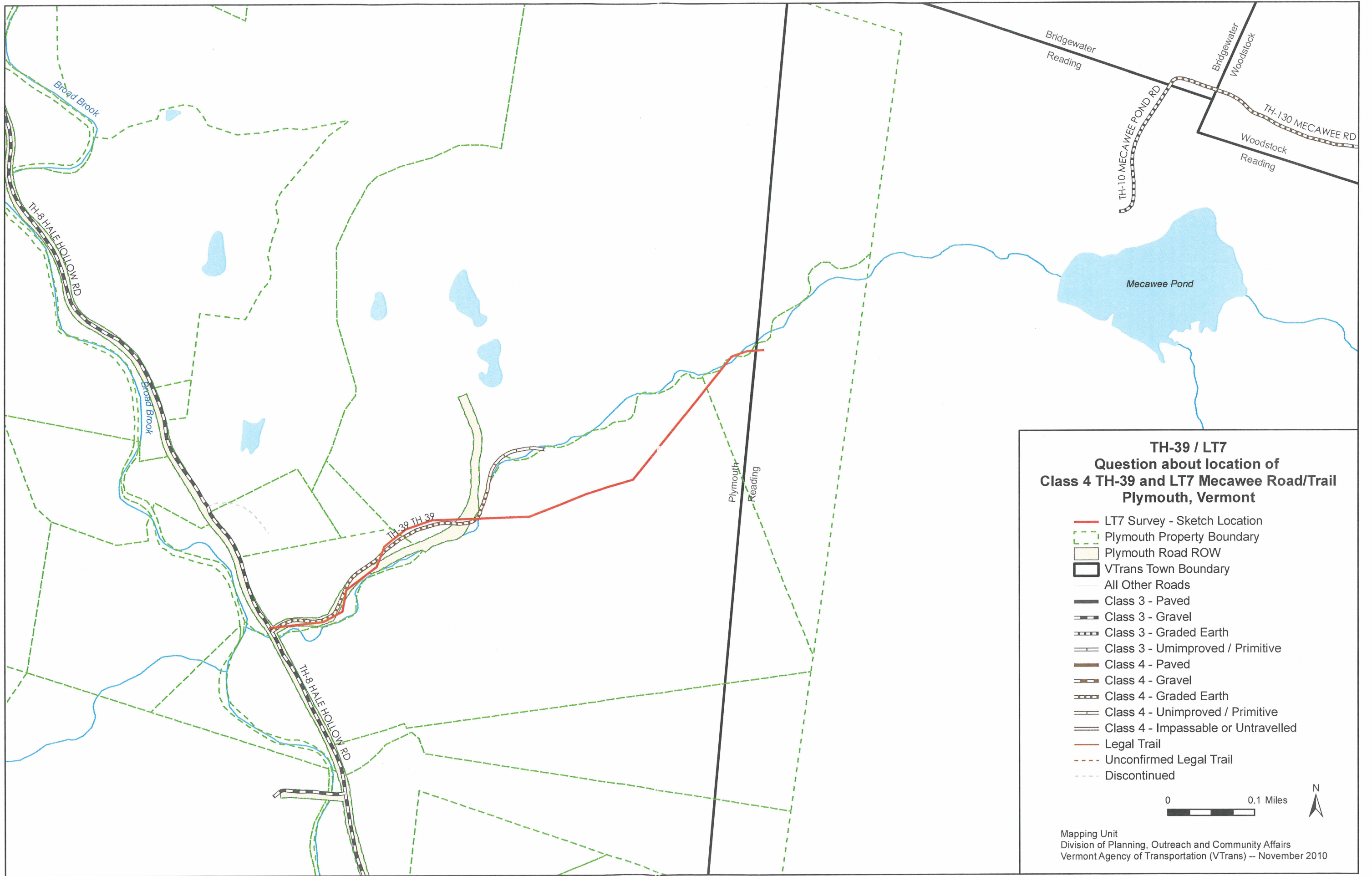
LT/PTH 3, LT/PTH 6, LT/PTH 8 and LT/PTH 12 are Plymouth roads which are being used, provide access to properties, are clearly visible (see pictures in folders) but have no(found) survey. These roads were presented at a public hearing in November 2008 without objection. LT/PTH 3, 6 and 8 are used and maintained by a local snowmobile company which employs local residents. These are approved Vast/Vasa trails.

The Plymouth Selectboard feels that these roads are in fact Plymouth class 4 roads which were previously mapped, but then deleted from the State maps per previous instructions.

Please pencil these roads onto Plymouth's VTrans map for eventual inclusion with the certificate of mileage in February. If you have any questions, feel free to contact any selectman or Russ Tonkin by email.

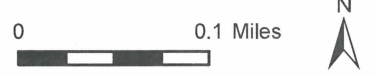
Sincerely,

Plymouth Selectboard

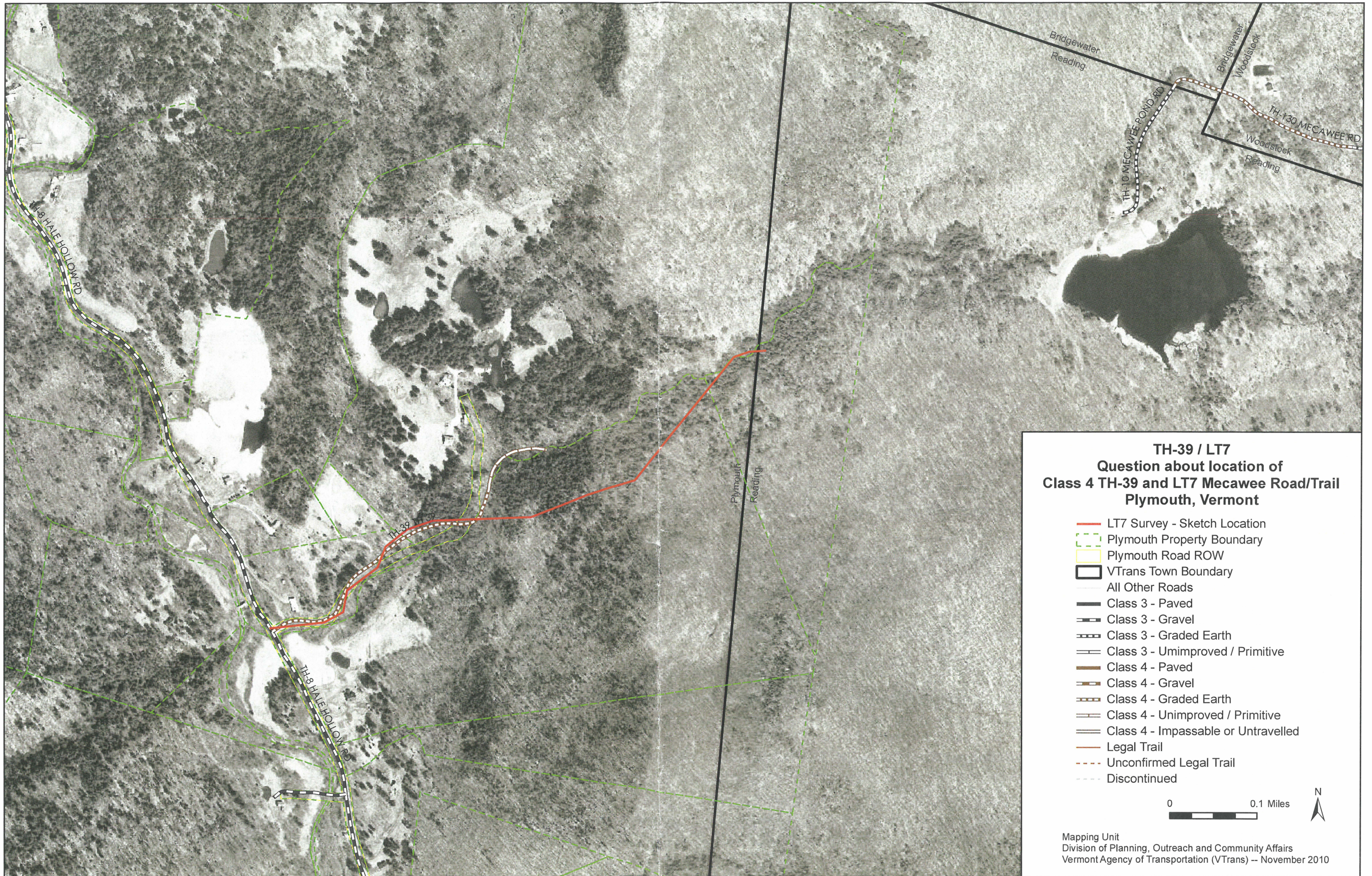


TH-39 / LT7
Question about location of
Class 4 TH-39 and LT7 Mecawee Road/Trail
Plymouth, Vermont

- LT7 Survey - Sketch Location
- Plymouth Property Boundary
- Plymouth Road ROW
- VTrans Town Boundary
- All Other Roads
- Class 3 - Paved
- Class 3 - Gravel
- Class 3 - Graded Earth
- Class 3 - Unimproved / Primitive
- Class 4 - Paved
- Class 4 - Gravel
- Class 4 - Graded Earth
- Class 4 - Unimproved / Primitive
- Class 4 - Impassable or Untravelled
- Legal Trail
- Unconfirmed Legal Trail
- Discontinued



Mapping Unit
 Division of Planning, Outreach and Community Affairs
 Vermont Agency of Transportation (VTrans) – November 2010



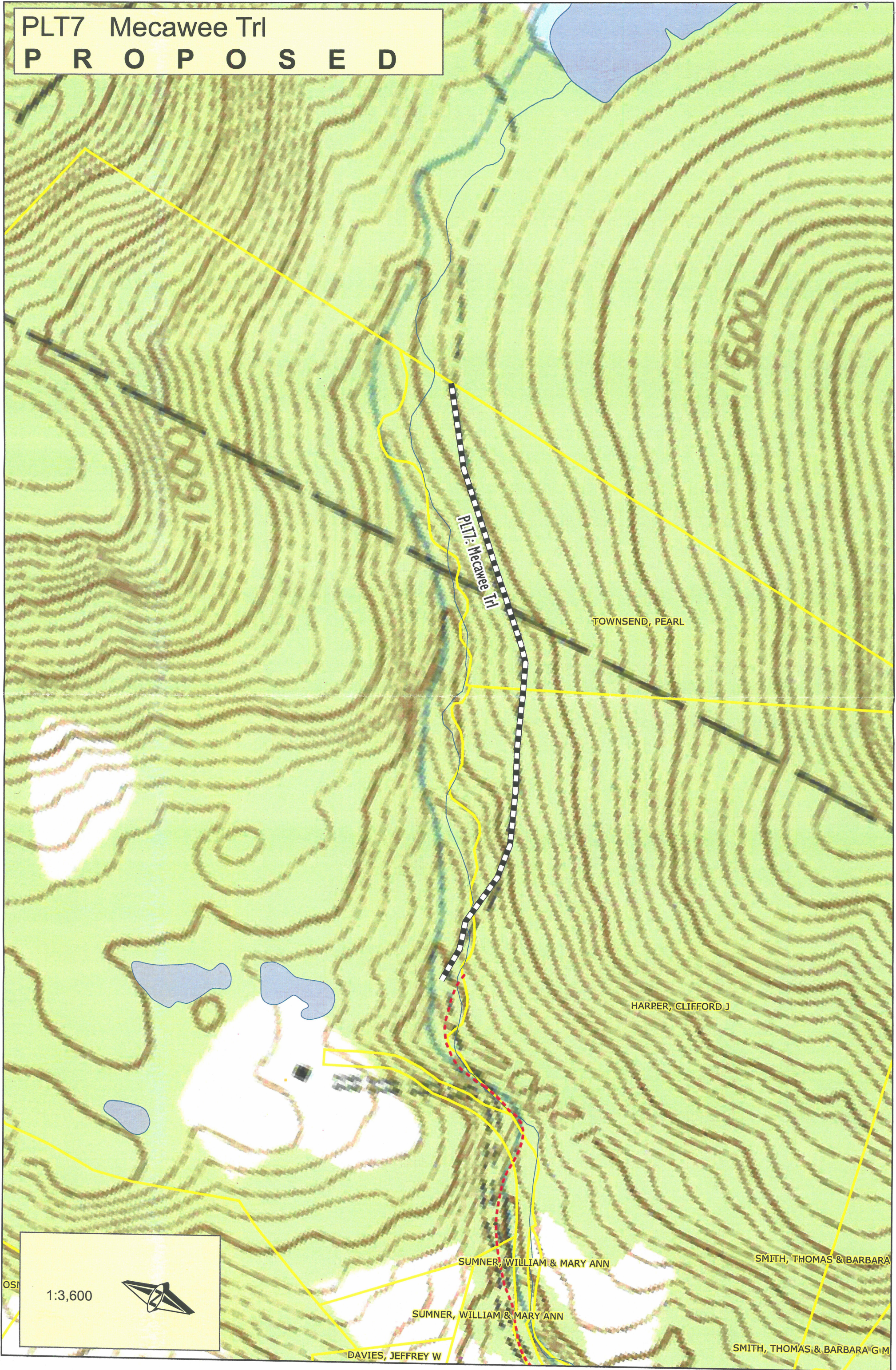
TH-39 / LT7
Question about location of
Class 4 TH-39 and LT7 Mecawee Road/Trail
Plymouth, Vermont

- LT7 Survey - Sketch Location
- Plymouth Property Boundary
- Plymouth Road ROW
- VTrans Town Boundary
- All Other Roads
- Class 3 - Paved
- Class 3 - Gravel
- Class 3 - Graded Earth
- Class 3 - Unimproved / Primitive
- Class 4 - Paved
- Class 4 - Gravel
- Class 4 - Graded Earth
- Class 4 - Unimproved / Primitive
- Class 4 - Impassable or Untravelled
- Legal Trail
- Unconfirmed Legal Trail
- Discontinued



Mapping Unit
 Division of Planning, Outreach and Community Affairs
 Vermont Agency of Transportation (VTrans) -- November 2010

PLT7 Mecawee Trl
P R O P O S E D



OSI
1:3,600

PLT7 Mecawee Trl

TOWNSEND, PEARL

HARPER, CLIFFORD J

SUMNER, WILLIAM & MARY ANN

SMITH, THOMAS & BARBARA

SUMNER, WILLIAM & MARY ANN

DAVIES, JEFFREY W

SMITH, THOMAS & BARBARA G M