

CERTIFICATE OF HIGHWAY MILEAGE
YEAR ENDING FEBRUARY 10, 2013

Fill out form, make and file copy with the Town Clerk, and mail ORIGINAL, before February 20, 2013 to:
Vermont Agency of Transportation, Division of Policy, Planning and Intermodal Development,
One National Life Drive, Montpelier, VT 05633.

Received
JAN 25 2013
County
Policy, Planning & Intermodal
Development Division

We, the members of the legislative body of NORWICH in WINDSOR
on an oath state that the mileage of highways, according to Vermont Statutes Annotated, Title 19, Section 305,
added 1985, is as follows:

PART I - CHANGES TOTALS - Please fill in and calculate totals.

Town Highways	Previous Mileage	Added Mileage	Subtracted Mileage	Total	Scenic Highways
Class 1	0.000			0.000	0.000
Class 2	14.550			14.550	0.000
Class 3	61.22			61.22	5.220
State Highway	18.341			18.341	0.000
Total	94.111				5.220
* Class 1 Lane	0.000			0.000	0.000
* Class 4	19.13			19.13	
* Legal Trail	2.16			2.16	
* Unidentified Corridor	0.00			0.00	

* Mileage for Class 1 Lane, Class 4, Legal Trail, and Unidentified Corridor classifications are NOT included in total.


PART II - INFORMATION AND DESCRIPTION OF CHANGES SHOWN ABOVE.

1. NEW HIGHWAYS: Please attach Selectmen's "Certificate of Completion and Opening".
2. DISCONTINUED: Please attach SIGNED copy of proceedings (minutes of meeting).
3. RECLASSIFIED/REMEASURED: Please attach SIGNED copy of proceedings (minutes of meeting).
4. SCENIC HIGHWAYS: Please attach a copy of order designating/discontinuing Scenic Highways.

IF THERE ARE NO CHANGES IN MILEAGE: Check box and sign below.

PART III - SIGNATURES - PLEASE SIGN.

Selectmen/ Aldermen/ Trustees Signatures:



T/C/V Clerk Signature: 

Date Filed: 1/22/13

Please sign ORIGINAL and return it for Transportation signature.

AGENCY OF TRANSPORTATION APPROVAL: Signed copy will be returned to T/C/V Clerk.

APPROVED:


Representative, Agency of Transportation
Johnathan Croft

DATE: 1/28/2013

CERTIFICATE OF HIGHWAY MILEAGE
YEAR ENDING FEBRUARY 10, 2013

Fill out form, make and file copy with the Town Clerk, and mail ORIGINAL, before February 20, 2013 to: Vermont Agency of Transportation, Division of Policy, Planning and Intermodal Development, One National Life Drive, Montpelier, VT 05633.

We, the members of the legislative body of NORWICH in WINDSOR County on an oath state that the mileage of highways, according to Vermont Statutes Annotated, Title 19, Section 305, added 1985, is as follows:

PART I - CHANGES TOTALS - Please fill in and calculate totals.

Table with 6 columns: Town Highways, Previous Mileage, Added Mileage, Subtracted Mileage, Total, Scenic Highways. Rows include Class 1, Class 2, Class 3, State Highway, Total, Class 1 Lane, Class 4, Legal Trail, Unidentified Corridor.

* Mileage for Class 1 Lane, Class 4, Legal Trail, and Unidentified Corridor classifications are NOT included in total.

PART II - INFORMATION AND DESCRIPTION OF CHANGES SHOWN ABOVE.

- 1. NEW HIGHWAYS: Please attach Selectmen's "Certificate of Completion and Opening".
2. DISCONTINUED: Please attach SIGNED copy of proceedings (minutes of meeting). I-91 Exit 13 Ramp A - removal of slip ramp map change - no change in mileage
3. RECLASSIFIED/REMEASURED: Please attach SIGNED copy of proceedings (minutes of meeting).
4. SCENIC HIGHWAYS: Please attach a copy of order designating/discontinuing Scenic Highways.

IF THERE ARE NO CHANGES IN MILEAGE: Check box and sign below. []

PART III - SIGNATURES - PLEASE SIGN.

Selectmen/ Aldermen/ Trustees Signatures: _____

T/C/V Clerk Signature: _____ Date Filed: _____

Please sign ORIGINAL and return it for Transportation signature.

AGENCY OF TRANSPORTATION APPROVAL: Signed copy will be returned to T/C/V Clerk.

APPROVED: _____ DATE: _____
Representative, Agency of Transportation

**CERTIFICATE OF HIGHWAY MILEAGE
YEAR ENDING FEBRUARY 10, 2013**

Fill out form, make and file copy with the Town Clerk, and mail ORIGINAL, before February 20, 2013 to:
Vermont Agency of Transportation, Division of Policy, Planning and Intermodal Development,
One National Life Drive, Montpelier, VT 05633.

We, the members of the legislative body of NORWICH in WINDSOR County
on an oath state that the mileage of highways, according to Vermont Statutes Annotated, Title 19, Section 305,
added 1985, is as follows:

PART I - CHANGES TOTALS - Please fill in and calculate totals.

Town Highways	Previous Mileage	Added Mileage	Subtracted Mileage	Total	Scenic Highways
Class 1	0.000				0.000
Class 2	14.550				0.000
Class 3	61.22				5.220
State Highway	18.341				0.000
Total	94.111				5.220
* Class 1 Lane	0.000				0.000
* Class 4	19.13				
* Legal Trail	2.16				
* Unidentified Corridor	0.00				

* Mileage for Class 1 Lane, Class 4, Legal Trail, and Unidentified Corridor classifications are NOT included in total.

PART II - INFORMATION AND DESCRIPTION OF CHANGES SHOWN ABOVE.

- NEW HIGHWAYS:** Please attach Selectmen's "Certificate of Completion and Opening".
- DISCONTINUED:** Please attach SIGNED copy of proceedings (minutes of meeting).
I-91 Exit 13 Ramp A - removal of slip ramp
- RECLASSIFIED/REMEASURED:** Please attach SIGNED copy of proceedings (minutes of meeting).
- SCENIC HIGHWAYS:** Please attach a copy of order designating/discontinuing Scenic Highways.

IF THERE ARE NO CHANGES IN MILEAGE: Check box and sign below. []

PART III - SIGNATURES - PLEASE SIGN.

Selectmen/ Aldermen/ Trustees Signatures: _____

T/C/V Clerk Signature: _____ Date Filed: _____

Please sign ORIGINAL and return it for Transportation signature.

AGENCY OF TRANSPORTATION APPROVAL: Signed copy will be returned to T/C/V Clerk.

APPROVED: _____ DATE: _____
 Representative, Agency of Transportation

Moulton, Sara

From: Garbacik, Nick
Sent: Thursday, November 01, 2012 1:34 PM
To: Moulton, Sara
Subject: RE: Norwich - STP HES 0170(4)

Oh, you're right! I'll have to look into that!

From: Moulton, Sara
Sent: Thursday, November 01, 2012 11:59 AM
To: Garbacik, Nick
Subject: RE: Norwich - STP HES 0170(4)

If I look on sheet 2 (link below), I think I want to get sheet 134 Norwich 0170 Off Ramp Layout, but the sheets only go to 77.

[http://aotdpr/diwebstore/State and US Routes/jobframe.asp?AID=State%5Fand%5FUS%5FRoutes&PID=76488&SID=1401095](http://aotdpr/diwebstore/State_and_US_Routes/jobframe.asp?AID=State%5Fand%5FUS%5FRoutes&PID=76488&SID=1401095)

Please let me know if I am missing something or am misunderstanding the sheets.
Sara

From: Garbacik, Nick
Sent: Thursday, November 01, 2012 11:39 AM
To: Moulton, Sara
Subject: RE: Norwich - STP HES 0170(4)

Hi Sara,

You'll find this one here:

[http://aotdpr/diwebstore/State and US Routes/documenttoc.asp?AID=State%5Fand%5FUS%5FRoutes&PID=76488](http://aotdpr/diwebstore/State_and_US_Routes/documenttoc.asp?AID=State%5Fand%5FUS%5FRoutes&PID=76488)

From: Moulton, Sara
Sent: Thursday, November 01, 2012 10:17 AM
To: Garbacik, Nick
Subject: Norwich - STP HES 0170(4)

Are As-Builts available for Norwich - STP HES 0170(4) PIN 08C104?

I looked in DPR but didn't find it there.

Sara Moulton, GISP
Mapping & GIS Specialist, Mapping Unit
Division of Policy and Planning
Vermont Agency of Transportation (VTrans)
Tel: 802-828-2109

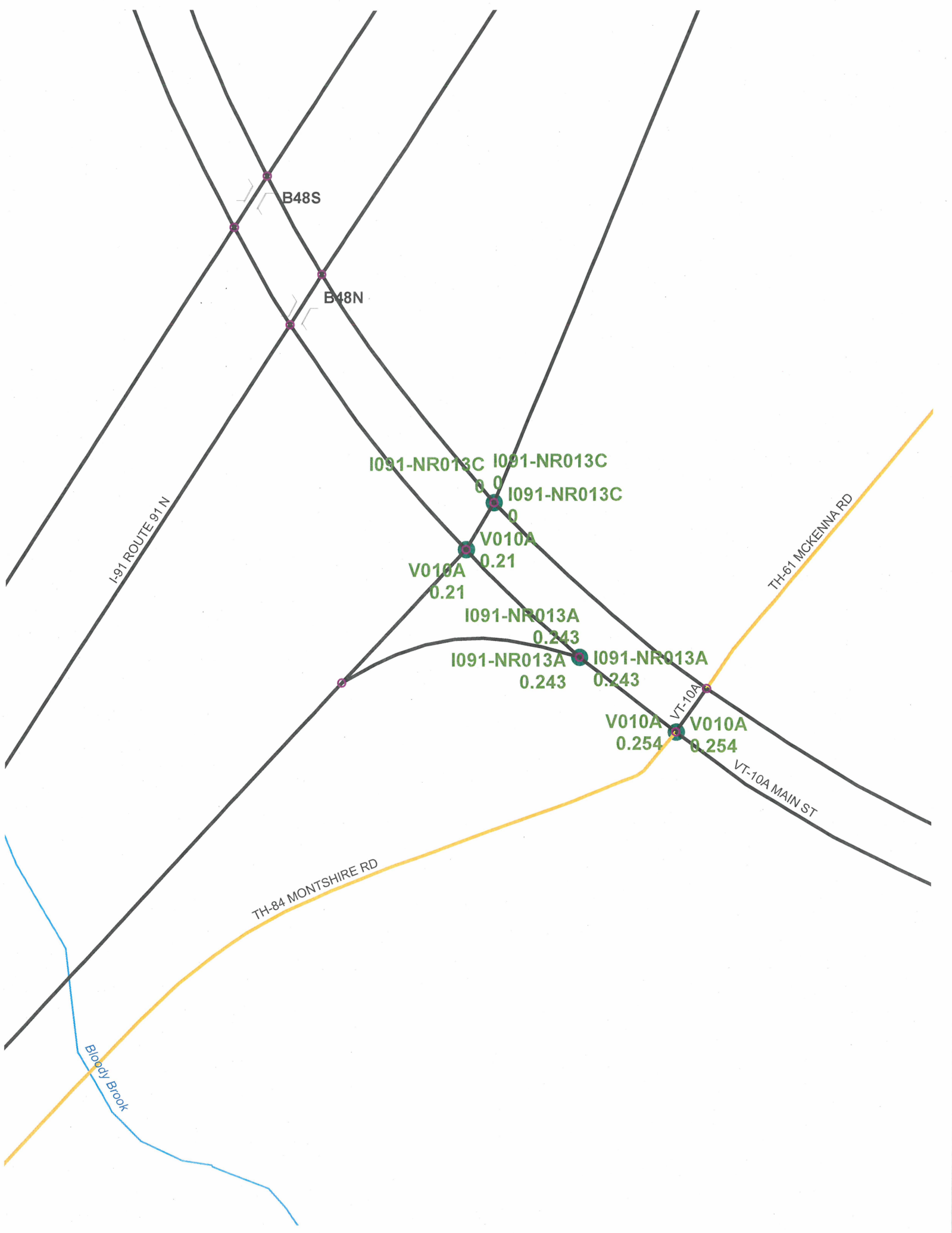
Moulton, Sara

From: Moulton, Sara
Sent: Thursday, November 01, 2012 10:17 AM
To: Garbacik, Nick
Subject: Norwich - STP HES 0170(4)

Are As-Builts available for Norwich - STP HES 0170(4) PIN 08C104?

I looked in DPR but didn't find it there.

Sara Moulton, GISP
Mapping & GIS Specialist, Mapping Unit
Division of Policy and Planning
Vermont Agency of Transportation (VTrans)
Tel: 802-828-2109



I-91 ROUTE 91 N

TH-84 MONTSHIRE RD

TH-61 MCKENNA RD

VT-10A MAIN ST

Bloody Brook

B48S

B48N

I091-NR013C I091-NR013C
I091-NR013C

V010A
V010A
0.21

I091-NR013A
I091-NR013A
0.243 0.243

V010A V010A
0.254 0.254

VT-10A

0.0

0.21

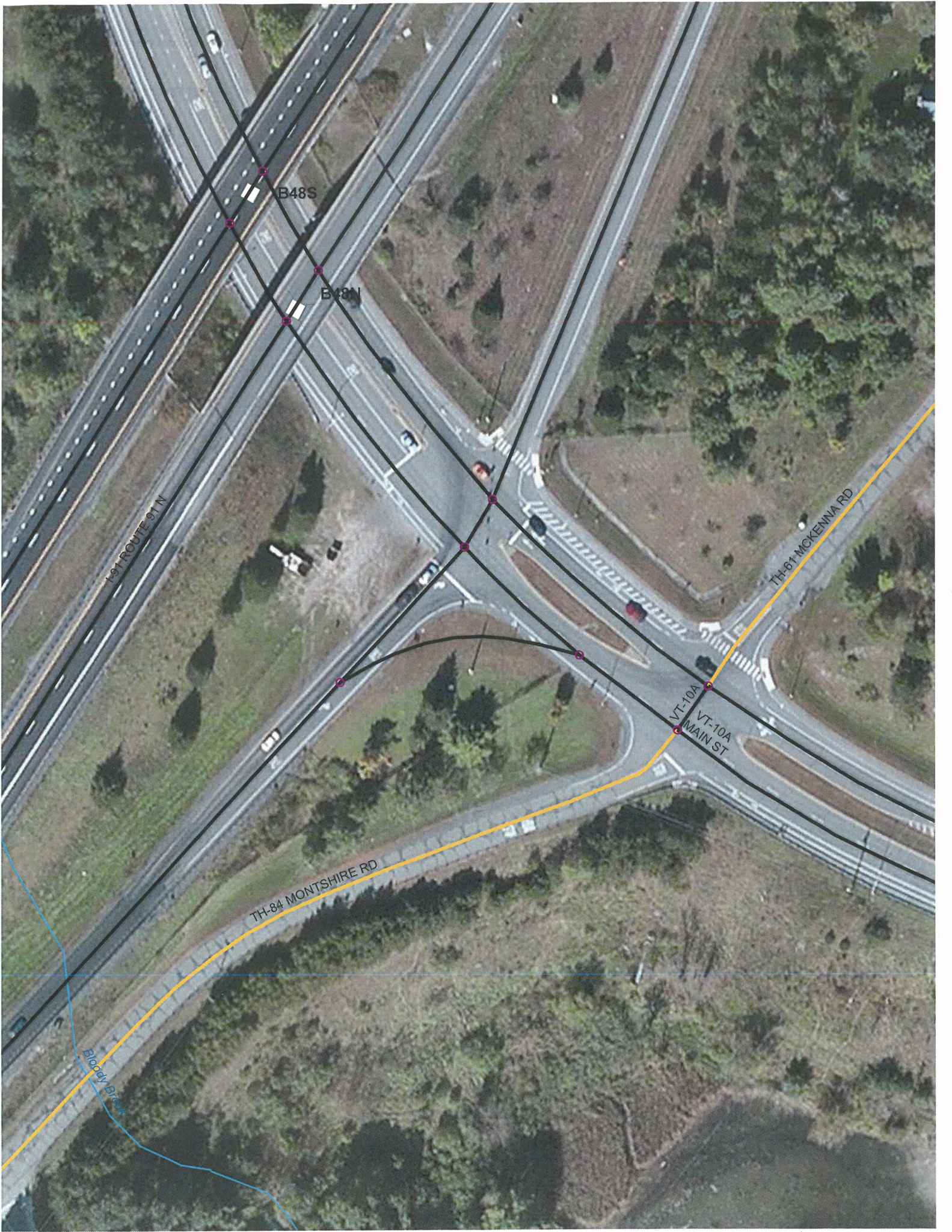
0.243

0.243

0.243

0.254

0.254



B48S

B48N

I-91 ROUTE 91 N

TH-61 MCKENNA RD

TH-84 MONTSHIRE RD

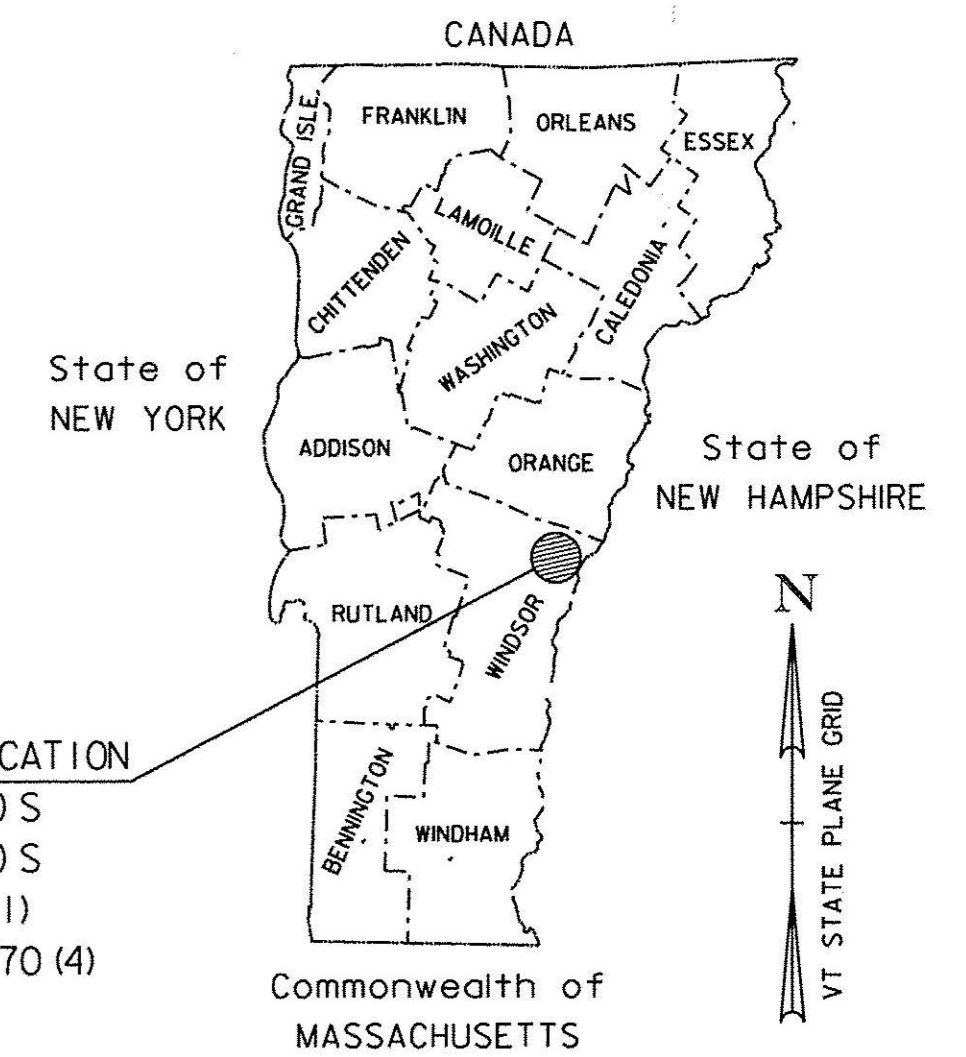
VT-10A
VT-10A
MAIN ST

Bloody Brook

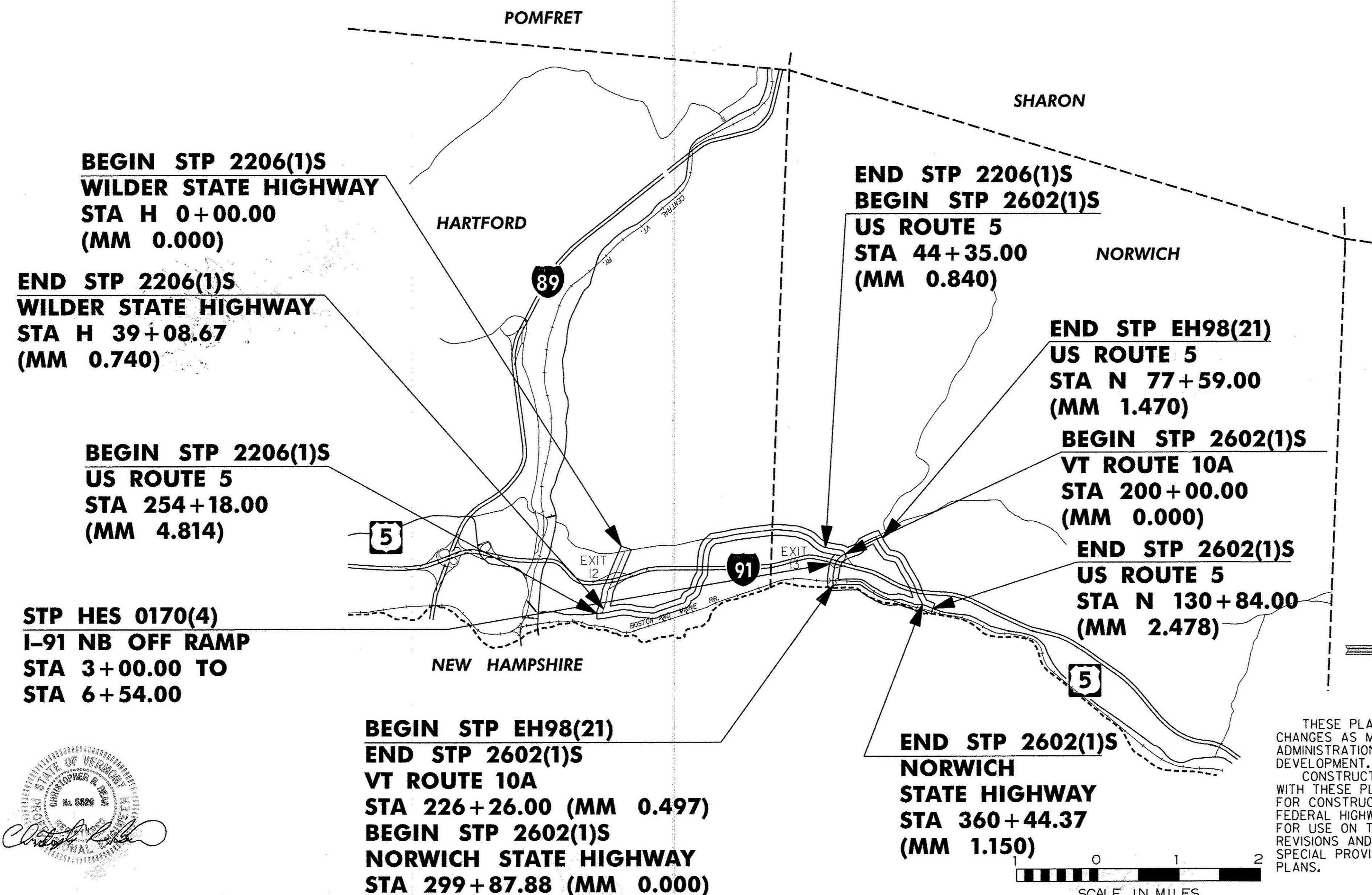
STATE OF VERMONT
AGENCY OF TRANSPORTATION



PROPOSED IMPROVEMENT
TOWNS OF HARTFORD & NORWICH
COUNTY OF WINDSOR
WILDER STATE HIGHWAY, US ROUTE 5, VT ROUTE 10A,
NORWICH STATE HIGHWAY & I-91 NB OFF RAMP



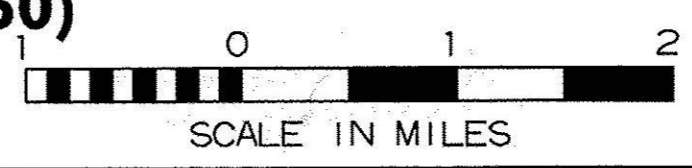
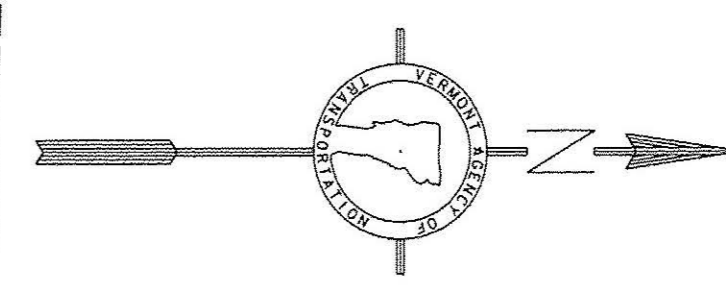
PROJECT LOCATION
STP 2206 (1) S
STP 2602 (1) S
STP EH98 (2) I
STP HES 0170 (4)



RECORD PLANS	
CONTRACTOR:	PIKE INDUSTRIES, INC. - BERLIN, VT
RESIDENT ENGINEER:	CHRIS BARKER
CONSTRUCTION BEGAN:	JUNE 26, 2009
CONSTRUCTION COMPLETE:	DECEMBER 8, 2009
RECORD PLANS BY:	CHRIS BARKER & C. PIERCE
I HEREBY CERTIFY THAT ALL THE CONSTRUCTION REQUIRED BY THIS SET OF DRAWINGS HAS BEEN ACCOMPLISHED AS INDICATED HEREIN.	
BY:	<i>[Signature]</i> RESIDENT ENGINEER
DATE:	01/03/12
NOTE: Any further information concerning final quantities, amounts or other details relative to this project may be found at Central Files in the electronic archives.	

CLD CONSULTING ENGINEERS
540 Commercial Street
Manchester, NH 03101
Tel: (603) 668-8223
Fax: (603) 668-9802
email: clde@cldeengineers.com
Maine • New Hampshire • Vermont

CONVENTIONAL SYMBOLS	
COUNTY LINE	
TOWN LINE	
LIMITS OF ACCESS	
POINT OF ACCESS	
FENCE LINE	
STONE WALL	
TRAVELED WAY	
GUARD RAIL	
RAILROAD	
SURVEY LINE	
CULVERT	
POWER POLE	
TELEPHONE POLE	
TREES	
CONTROL OF ACCESS	
PROPERTY LINE	
R.O.W. TAKING LINE	
SLOPE RIGHTS	
TOP OF CUT	
TOE OF SLOPE	



THESE PLANS ARE SUBJECT TO SUCH ENGINEERING CHANGES AS MAY BE REQUIRED BY THE FEDERAL HIGHWAY ADMINISTRATION OR THE DIRECTOR OF PROJECT DEVELOPMENT.
CONSTRUCTION IS TO BE CARRIED ON IN ACCORDANCE WITH THESE PLANS AND THE STANDARD SPECIFICATIONS FOR CONSTRUCTION DATED 2006, AS APPROVED BY THE FEDERAL HIGHWAY ADMINISTRATION ON JUNE 15, 2006 FOR USE ON THIS PROJECT, INCLUDING ALL SUBSEQUENT REVISIONS AND SUCH REVISED SPECIFICATIONS AND SPECIAL PROVISIONS AS ARE INCORPORATED IN THESE PLANS.

UNLESS OTHERWISE NOTED, ALL DRAWING AND DETAILS ON THE PLANS ARE DRAWN "NOT TO SCALE".
RIGHT-OF-WAY LIMITS, IF APPLICABLE, ARE PROVIDED SOLELY FOR THE CONVENIENCE OF THE STATE AND ITS CONTRACTOR DURING THE COURSE OF THIS PAVING PROJECT. ANY REFERENCES TO OFFSETS ON THESE PLANS ARE APPROXIMATE AND SHOULD NOT BE RELIED UPON FOR ANY OTHER PURPOSES.

DIRECTOR OF PROJECT DEVELOPMENT	
APPROVED <i>[Signature]</i>	DATE 4-7-09
PROJECT MANAGER : TED DOMEY	
PROJECT NAME : HARTFORD-NORWICH/NORWICH	
PROJECT NUMBER : STP 2206 (1) S/STP 2602 (1) S	
STP EH98 (2) I/STP HES 0170 (4)	
SHEET 1	OF 137 SHEETS

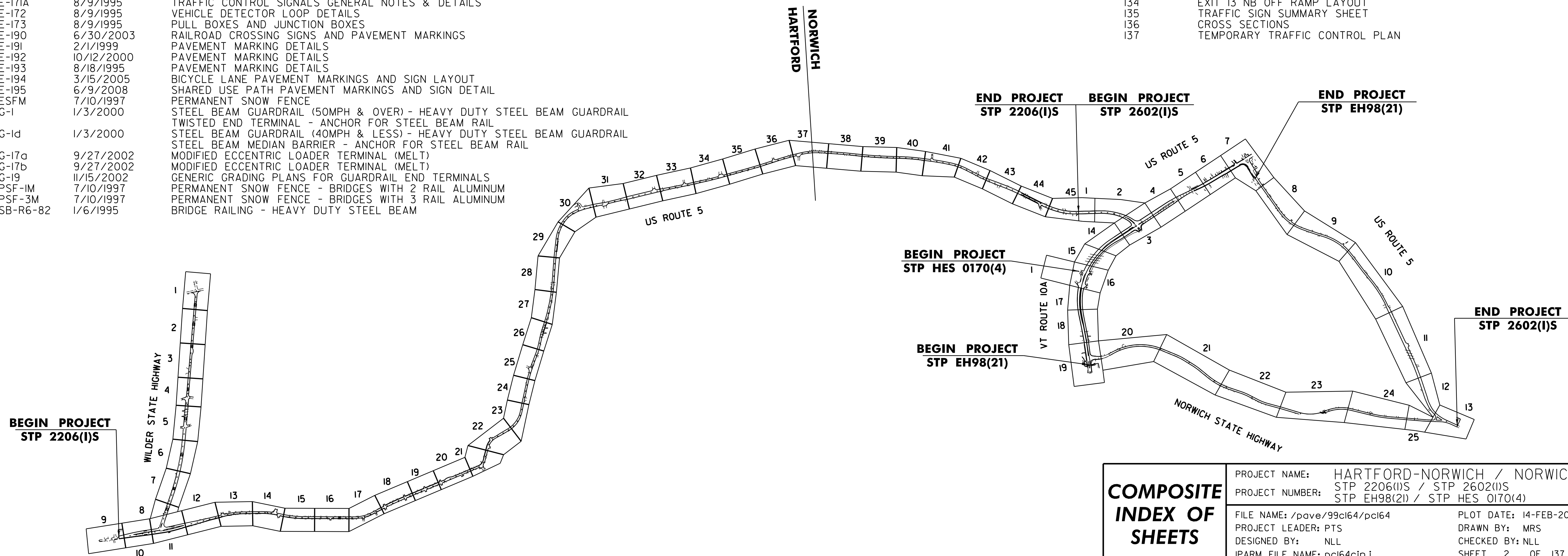
MODEL: Default
 99c164-06c030-99f038-08c04.dgn
 CLD 05-0388
 CLD 07-0144
 CLD 08-0148
 CLD 08-0182

INDEX OF STANDARD PLANS

STD	DATE	DESCRIPTION
C-2A	10/14/2005	PORTLAND CEMENT CONCRETE SIDEWALK, DRIVE ENTRANCES WITH SIDEWALK ADJACENT TO CURB
C-2B	10/14/2005	PORTLAND CEMENT CONCRETE SIDEWALK, DRIVE ENTRANCES WITH SIDEWALK AND GREEN STRIP
C-3A	3/10/2008	SIDEWALK RAMPS
C-3B	3/10/2008	SIDEWALK RAMPS AND MEDIAN ISLANDS
C-10	2/11/2008	CURBING
D-3	6/1/1994	TREATED GUTTERS
D-10	6/1/1994	REINFORCED CONCRETE DROP INLET TOPS - BITUMINOUS CONCRETE CURB & GRANITE SLOPE EDGING
D-15	6/1/1994	PRECAST REINF. CONC. CATCH BASIN W/CAST IRON GRATE, PRECAST REINF. CONC. MANHOLE W/ CAST IRON COVER, CAST IRON GRATE WITH FRAME, TYPE D - CAST IRON GRATE WITH FRAME, TYPE E
D-20	3/3/2003	HIGHWAY CROSSING FOR UNDERGROUND UTILITIES
E-100	1/2/2004	CONSTRUCTION APPROACH SIGNS
E-100A	1/2/2004	SIDE ROAD CONSTRUCTION APPROACH SIGNS
E-101	5/30/2003	CONSTRUCTION SIGN DETAILS
E-102	6/30/2003	CONSTRUCTION SIGN DETAILS
E-102A	5/1/2004	CONSTRUCTION SIGN DETAILS
E-103	3/1/2004	MAINLINE TRAFFIC CONTROL DIVIDED HIGHWAY - ONE LANE CLOSED
E-106	3/1/2004	TRAFFIC CONTROL - MISCELLANEOUS DETAILS
E-108A	12/8/2008	CONSTRUCTION ZONE LONGITUDINAL DROP OFFS FOR PAVING
E-110	8/8/1995	MAJOR MAINTENANCE OPERATION LANE CLOSURE
E-111	3/11/1997	MINOR MAINTENANCE OPERATION
E-121	8/8/1995	STANDARD SIGN PLACEMENT - CONVENTIONAL ROAD
E-123	3/16/2004	GUIDE SIGN PLACEMENT - MISCELLANEOUS DETAILS
E-138	5/30/2003	MILEMARKER DETAILS - STATE & TOWN HIGHWAYS
E-141	9/20/1995	REGULATORY SIGN DETAILS
E-142	9/20/1995	REGULATORY SIGN DETAILS
E-143	6/15/2004	REGULATORY SIGN DETAILS
E-143B	3/15/2005	REGULATORY SIGN DETAILS
E-144	3/29/1999	REGULATORY SIGN DETAILS
E-145A	12/23/1994	REGULATORY SIGN DETAILS - LANE USE CONTROL SIGNS
E-145B	12/23/1994	REGULATORY SIGN DETAILS - LANE USE CONTROL SIGNS
E-146	9/20/1995	REGULATORY SIGN DETAILS
E-150	5/1/2004	WARNING SIGN DETAILS
E-152	5/1/2004	WARNING SIGN DETAILS
E-153	5/1/2004	WARNING SIGN DETAILS
E-153B	5/30/2003	WARNING SIGN DETAILS
E-164	5/20/1999	SQUARE STEEL SIGN POST
E-170	11/4/1999	TRAFFIC CONTROL SIGNALS PEDESTAL POST MOUNTED
E-171A	8/9/1995	TRAFFIC CONTROL SIGNALS GENERAL NOTES & DETAILS
E-172	8/9/1995	VEHICLE DETECTOR LOOP DETAILS
E-173	8/9/1995	PULL BOXES AND JUNCTION BOXES
E-190	6/30/2003	RAILROAD CROSSING SIGNS AND PAVEMENT MARKINGS
E-191	2/1/1999	PAVEMENT MARKING DETAILS
E-192	10/12/2000	PAVEMENT MARKING DETAILS
E-193	8/18/1995	PAVEMENT MARKING DETAILS
E-194	3/15/2005	BICYCLE LANE PAVEMENT MARKINGS AND SIGN LAYOUT
E-195	6/9/2008	SHARED USE PATH PAVEMENT MARKINGS AND SIGN DETAIL
ESFM	7/10/1997	PERMANENT SNOW FENCE
G-1	1/3/2000	STEEL BEAM GUARDRAIL (50MPH & OVER) - HEAVY DUTY STEEL BEAM GUARDRAIL TWISTED END TERMINAL - ANCHOR FOR STEEL BEAM RAIL STEEL BEAM GUARDRAIL (40MPH & LESS) - HEAVY DUTY STEEL BEAM GUARDRAIL STEEL BEAM MEDIAN BARRIER - ANCHOR FOR STEEL BEAM RAIL
G-1d	1/3/2000	MODIFIED ECCENTRIC LOADER TERMINAL (MELT)
G-17a	9/27/2002	MODIFIED ECCENTRIC LOADER TERMINAL (MELT)
G-17b	9/27/2002	MODIFIED ECCENTRIC LOADER TERMINAL (MELT)
G-19	11/15/2002	GENERIC GRADING PLANS FOR GUARDRAIL END TERMINALS
PSF-1M	7/10/1997	PERMANENT SNOW FENCE - BRIDGES WITH 2 RAIL ALUMINUM
PSF-3M	7/10/1997	PERMANENT SNOW FENCE - BRIDGES WITH 3 RAIL ALUMINUM
SB-R6-82	1/6/1995	BRIDGE RAILING - HEAVY DUTY STEEL BEAM

INDEX OF SHEETS

SHT	DESCRIPTION
1	COMPOSITE TITLE SHEET
2	COMPOSITE INDEX OF SHEETS
3	COMPOSITE PROJECT TIE SHEET
4-6	COMPOSITE QUANTITY SHEETS
7-8	COMPOSITE HANDWORK DETAIL SHEETS
9	COMPOSITE TYPICAL PAVEMENT MARKINGS
10	COMPOSITE SIDEWALK PAY LIMITS
11	COMPOSITE TEMPORARY TRAFFIC CONTROL PLAN
12	HARTFORD - NORWICH STP 2206(I)S
13-15	TITLE SHEET
16	PROJECT TYPICALS
17-18	SIDEWALK RAMP DETAILS
19-21	BRIDGE DETAIL SHEETS
22-23	QUANTITY SHEETS
24	ITEM DETAIL SUMMARY SHEETS
25-69	DITCH CLEANING SHEET
70-77	PAVING LAYOUTS
	TRAFFIC SIGN SUMMARY SHEETS
	NORWICH STP 2602(I)S & STP EH98(2)I
78	TITLE SHEET
79-83	PROJECT TYPICAL SHEETS
84-86	QUANTITY SHEETS
87-88	ITEM DETAIL SUMMARY SHEETS
89	DITCH CLEANING SHEET
90-114	PAVING LAYOUTS
115	SIDEWALK & CURBING LAYOUT
116	RAILROAD GRADE CROSSING PLAN
117-118	CONCRETE GRADE CROSSING DETAILS
119-121	VEHICLE LOOP DETECTORS SHEETS
122	VIDEO DETECTION SYSTEM
123-129	TRAFFIC SIGN SUMMARY SHEETS
	NORWICH STP HES 0170(4)
130-131	TYPICAL SHEETS
132-133	QUANTITY SHEETS
134	EXIT 13 NB OFF RAMP LAYOUT
135	TRAFFIC SIGN SUMMARY SHEET
136	CROSS SECTIONS
137	TEMPORARY TRAFFIC CONTROL PLAN



COMPOSITE INDEX OF SHEETS	PROJECT NAME: HARTFORD-NORWICH / NORWICH	PLOT DATE: 14-FEB-2012 15:48
	PROJECT NUMBER: STP 2206(I)S / STP 2602(I)S	DRAWN BY: MRS
	FILE NAME: /pave/99cl64/pci64	CHECKED BY: NLL
	IPARM FILE NAME: pci64cin.i	SHEET 2 OF 137