

District 4
Certcode 1409-0

**CERTIFICATE OF HIGHWAY MILEAGE
YEAR ENDING FEBRUARY 10, 2024**

Fill out form, make and file a copy with the Town Clerk, and submit the Mileage Certificate on or before February 20, 2024 to: Vermont Agency of Transportation, Division of Policy, Planning and Intermodal Development, Mapping Section via email to: aot.mileagecertificates@vermont.gov or if necessary via mail to: VTrans PPAID - Mapping Section, 219 North Main Street, Barre VT 05641.

We, the members of the legislative body of HARTLAND in WINDSOR County on an oath state that the mileage of highways, according to Vermont Statutes Annotated, Title 19, Section 305, added 1985, is as follows:

PART I - CHANGES TOTALS - Please fill in and calculate totals.

Town Highways	Previous Mileage	Added Mileage	Subtracted Mileage	Total	Scenic Highways
Class 1	0.000			0	0.000
Class 2	16.260			16.260	0.000
Class 3	59.71			59.71	0.000
State Highway	24.722		<i>-.084</i>	24.638	0.000
Total	100.692		24.638	100.608	0.000
* Class 1 Lane	0.000			0	
* Class 4	2.96			2.96	0.000
* Legal Trail	4.87			4.87	

* Mileage for Class 1 Lane, Class 4, and Legal Trail classifications are NOT included in total.

DS
PD

PART II - INFORMATION AND DESCRIPTION OF CHANGES SHOWN ABOVE.

1. NEW HIGHWAYS: Please attach Selectmen's "Certificate of Completion and Opening".

Mileage totals entered by
P. DeAndrea, VTrans
3/21/2024

2. DISCONTINUED: Please attach SIGNED copy of proceedings (minutes of meeting).

3. RECLASSIFIED/REMEASURED: Please attach SIGNED copy of proceedings (minutes of meeting).

Realignment project STP BP1B(2) - PIN 19F328
CL2 TH-2 (806081409) realignment (insignificant change in mileage);
+0.002 mi US-5 realignment; -0.044 mi VT-12 realignment; -0.042 mi VT-12 approach removed (V012-NA001)

4. SCENIC HIGHWAYS: Please attach a copy of order designating/discontinuing Scenic Highways.

IF THERE ARE NO CHANGES IN MILEAGE: Place an X in the box and sign below.

PART III - SIGNATURES - PLEASE SIGN.

Signatures of Selectmen/ Aldermen/ Trustees:

Phil Hobbie
John DeAndrea

Thomas Kennedy
Clayton Jeanne

Signature of T/C/V Clerk: *John DeAndrea*

Date Filed: *3/19/2024*

Please sign ORIGINAL and return it for Transportation signature.

AGENCY OF TRANSPORTATION APPROVAL: Signed copy will be returned to T/C/V Clerk.

APPROVED:

Johnathan Croft
8B1F350F309C4C9
Representative, Agency of Transportation

DATE: 3/22/2024

Project STP BP19(2) - PIN 19F328

-0.044 mi VT-12 realignment
(from 7.705 to 7.661 mi)

-0.042 mi VT-12 approach removed (V012-NA001)
(from 0.042 to 0 mi)

+0.002 mi US-5 realignment
(from 7.672 to 7.674 mi)

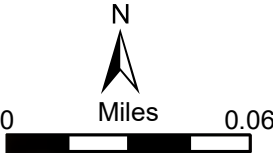


Index Map

**Mileage Certificate Changes 2024
HARTLAND US-5 and VT-12**

(CTUA:1409-0)
(CERTCODE:1409-0)

Mapping Section
Division of Policy and Planning
Vermont Agency of Transportation
-- March 19, 2024



From: [DeAndrea, Pam](#)
To: ["finance@hartlandvt.org"; "Clerk"; "Ormiston, Dave"](#)
Cc: [AOT - Mileage Certificates](#)
Subject: RE: Updated intersection for US-5 and
Date: Wednesday, January 3, 2024 12:38:00 PM
Attachments: [image001.png](#)
[image002.png](#)

Good morning,

I neglected to inform you of mileage changes for VT-12 in Hartland as well.

VT-12 realignment: **-0.44 miles**
VT-12 (V012-NA001) approach removed: **-0.042 miles**.

Thank you,

Pam

Pamela DeAndrea (she/her) | AOT GIS Professional III
Policy, Planning & Research Bureau – Mapping Section
Policy, Planning & Intermodal Development Division
Vermont Agency of Transportation
219 N. Main Street | Barre, VT 05641
[802-793-7555 phone](tel:802-793-7555) | pam.deandrea@vermont.gov
<http://vtrans.vermont.gov>



Help raise money for Vermonters impacted by flood damage and show your Vermont pride with *Vermont Strong* and *Tough Too* license plates and socks. [Click here to purchase your Vermont Strong gear](#) or visit DMV.Vermont.gov/VermontStrong23.

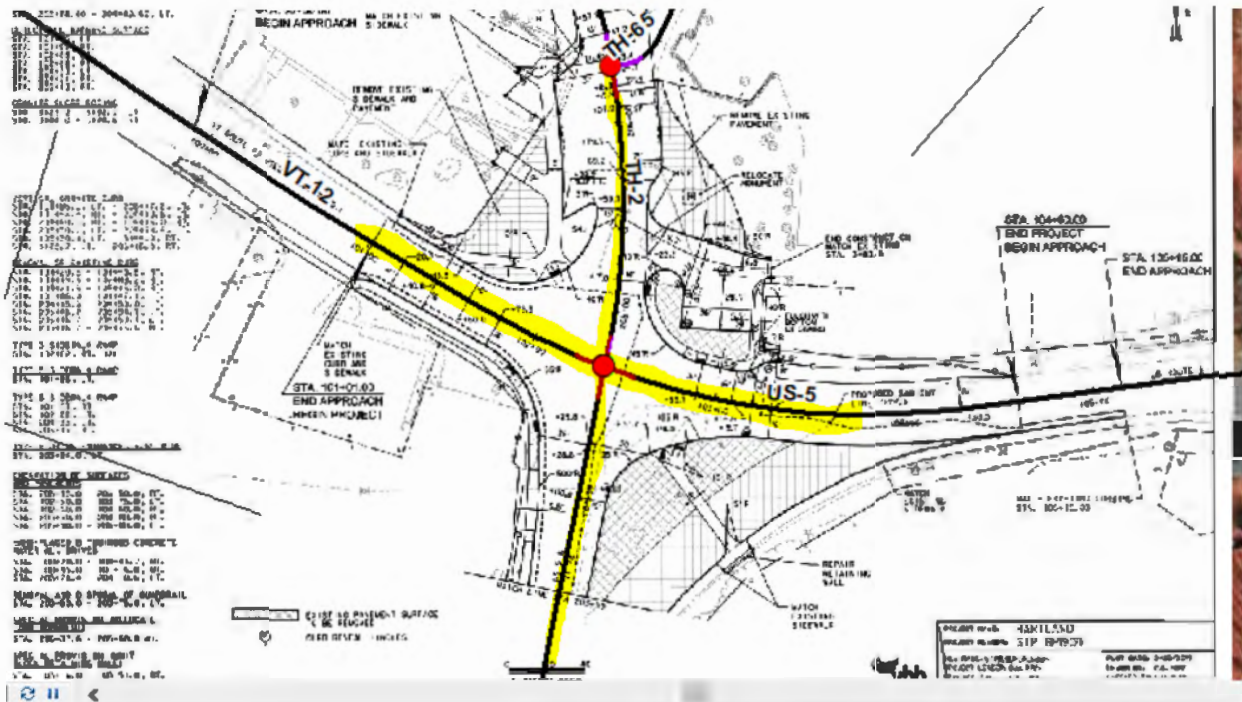
Impacted Vermonters can find resources and referrals by visiting [Vermont.Gov/Flood](#).

From: DeAndrea, Pam
Sent: Tuesday, January 2, 2024 4:34 PM
To: [finance@hartlandvt.org](#); Clerk <hartlandtownclerk@hartlandvt.org>; Ormiston, Dave <dormiston@hartlandvt.org>
Cc: AOT - Mileage Certificates <AOT.MileageCertificates@vermont.gov>
Subject: Updated intersection for US-5 and

Good afternoon,

I wanted to let you folks know that there will be an update to Town Highway mileage and the 2024 Town Highway Map at the intersection of US-5 and VT-12 in Hartland (see image below). We have preloaded the changes onto the 2024 Mileage Certificate. The intersection of US-5 and TH-2 has been reconfigured as shown in the yellow highlight and the underlying engineering plans in the image below. I have attached the engineering plans. We have made this update to our road data and the mileage changes are as follows:

US-5: +0.002 miles
Class 2 TH-2: no mileage change



Thank you and feel free to contact us with any questions.

Best,

Pam

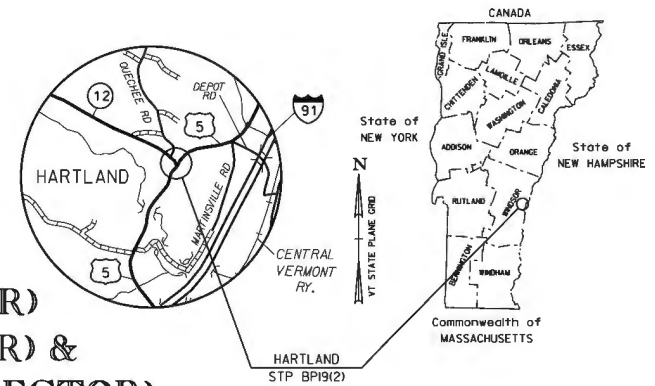
Pamela DeAndrea (she/her) | AOT GIS Professional III
 Policy, Planning & Research Bureau – Mapping Section
 Policy, Planning & Intermodal Development Division
 Vermont Agency of Transportation
 219 N. Main Street | Barre, VT 05641
 802-793-7555 phone | pam.deandrea@vermont.gov
<http://vtrans.vermont.gov>



Help raise money for Vermonters impacted by flood damage and show your Vermont pride with *Vermont Strong* and *Tough Too* license plates and socks. [Click here to purchase your Vermont Strong gear](#) or visit DMV.Vermont.gov/VermontStrong23.

Impacted Vermonters can find resources and referrals by visiting Vermont.Gov/Flood.

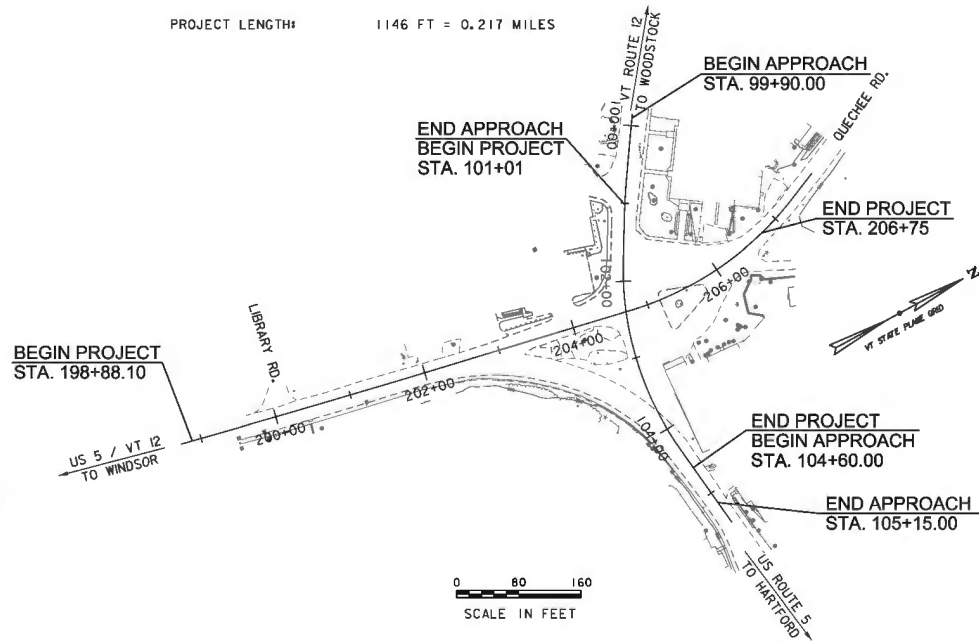
PROPOSED IMPROVEMENT TOWN OF HARTLAND COUNTY OF WINDSOR INTERSECTION OF US ROUTE 5 (MAJOR COLLECTOR) VT ROUTE 12 (MAJOR COLLECTOR) & TH #2 QUEECHEE ROAD (MINOR COLLECTOR)



PROJECT LOCATION: THIS PROJECT IS LOCATED AT THE INTERSECTION OF VT ROUTE 12, US ROUTE 5, AND QUEECHEE ROAD. THE PROJECT BEGINS ON US ROUTE 5 APPROXIMATELY 125 FEET SOUTH OF THE VT5/LIBRARY ROAD INTERSECTION AND EXTENDS APPROXIMATELY 250 FEET NORTH OF THE VT 12/QUEECHEE ROAD INTERSECTION. THE PROJECT EXTENDS FROM 125 FEET WEST TO 200 FEET EAST OF THE INTERSECTION.

PROJECT DESCRIPTION: THE WORK TO BE PERFORMED UNDER THIS PROJECT INCLUDES A REALIGNMENT OF THE INTERSECTION, NEW SURFACE PAVEMENT, NEW SIDEWALK, NEW DRAINAGE, UNDERGROUND UTILITIES, STRIPING, SIGNAGE, LANDSCAPING, AND OTHER INCIDENTAL ITEMS NEEDED FOR CONSTRUCTION.

PROJECT LENGTH: 1146 FT = 0.217 MILES



CONSTRUCTION IS TO BE CARRIED ON IN ACCORDANCE WITH THESE PLANS AND THE STANDARD SPECIFICATIONS FOR CONSTRUCTION DATED 2008, AS APPROVED BY THE FEDERAL HIGHWAY ADMINISTRATION ON APRIL 13, 2008 FOR USE ON THIS PROJECT, INCLUDING ALL SUBSEQUENT REVISIONS AND SUCH REVISED SPECIFICATIONS AND SPECIAL PROVISIONS AS ARE INCORPORATED IN THESE PLANS.

QUALITY ASSURANCE PROGRAM: LEVEL 2
SURVEYED BY : VHB
SURVEYED DATE : SEPTEMBER 2015
DATUM
VERTICAL NAVD 88 (GEOID 12A)
HORIZONTAL VT STATE PLANE (NAD 83)

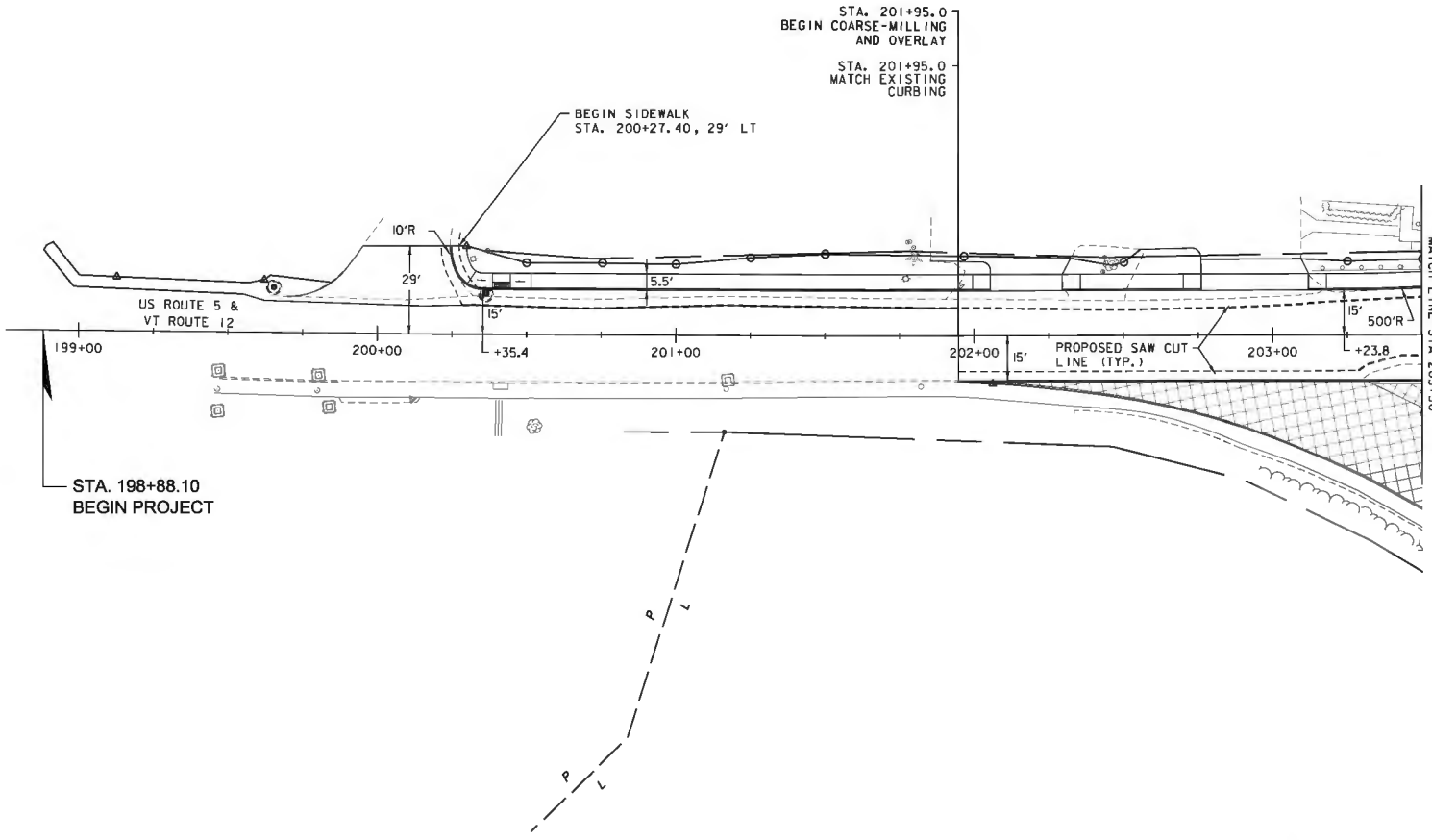
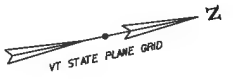
0 80 160
SCALE IN FEET



PROJECT MANAGER : DANIEL W. PECK, PE

PROJECT NAME : HARTLAND
VHB PROJECT NUMBER : STP BP19 (2)

SHEET 1 OF 56 SHEETS



STA. 201+95.0
 BEGIN COARSE-MILLING
 AND OVERLAY
 STA. 201+95.0
 MATCH EXISTING
 CURBING

BEGIN SIDEWALK
 STA. 200+27.40, 29' LT

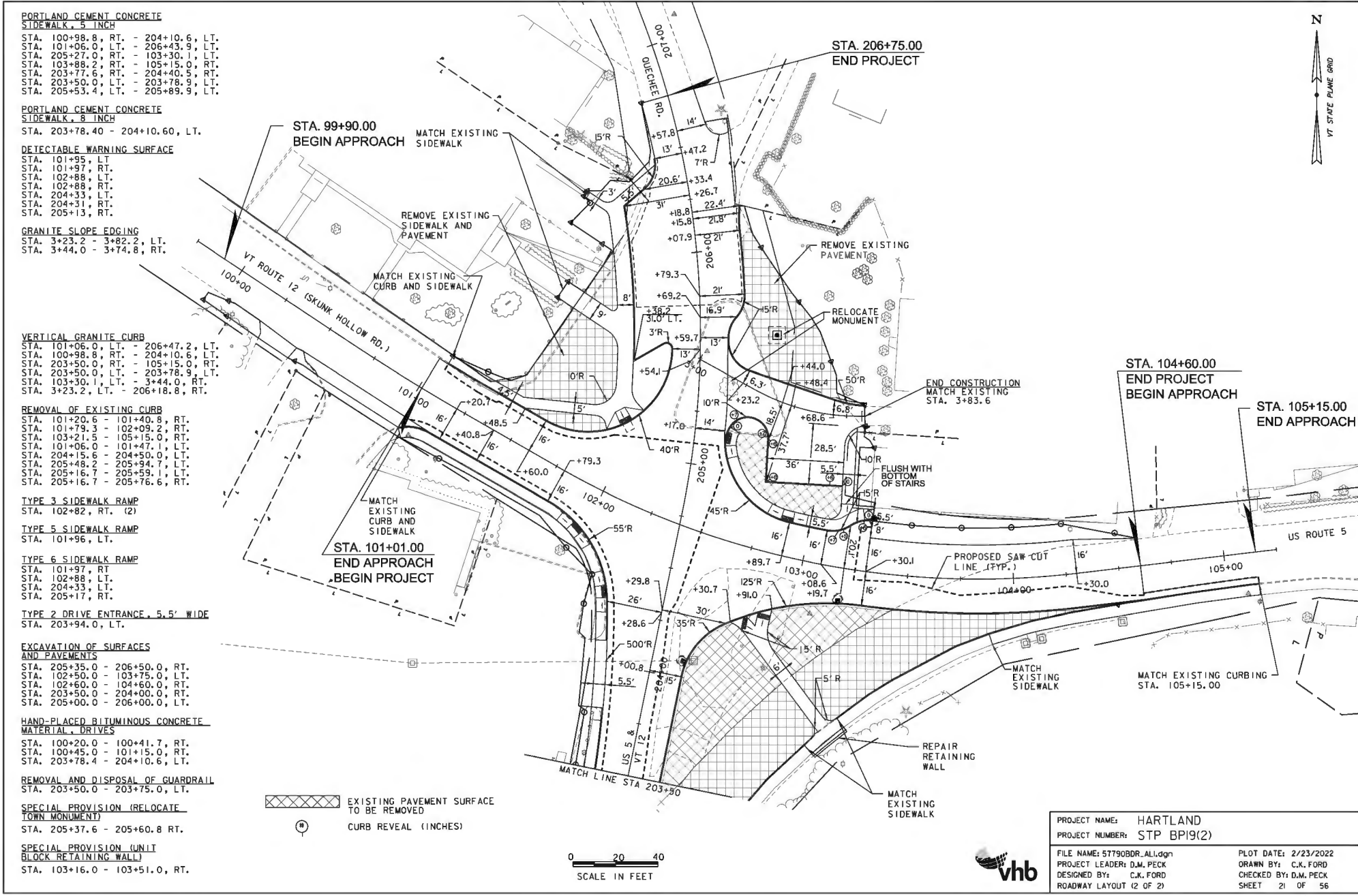
STA. 198+88.10
 BEGIN PROJECT

- VERTICAL GRANITE CURB**
 STA. 200+24.3 - 202+05.5, LT.
 STA. 202+29.5 - 202+76.0, LT.
 STA. 203+12.0 - 203+50.0, LT.
 STA. 201+95.0 - 203+50.0, RT.
- PORTLAND CEMENT CONCRETE SIDEWALK, 5 INCH**
 STA. 200+24.8 - 202+05.5, LT.
 STA. 202+29.5 - 202+76.0, LT.
 STA. 203+12.0 - 203+50.0, LT.
- PORTLAND CEMENT CONCRETE SIDEWALK, 8 INCH**
 STA. 202+05.5 - 202+29.5, LT.
 STA. 202+76.0 - 203+12.0, LT.
- DETECTABLE WARNING SURFACE**
 STA. 200+41.3, LT.
- TYPE 2 DRIVE ENTRANCE, 5.5' WIDE**
 STA. 202+17.5, LT.
 STA. 202+94.0, LT.
- TYPE 6 SIDEWALK RAMP**
 STA. 200+42.0, LT.
- EXCAVATION OF SURFACES AND PAVEMENTS**
 STA. 202+00.0 - 203+50.0, RT.
- REMOVAL OF EXISTING CURB**
 STA. 201+95.0 - 203+50.0, RT.
- REMOVAL AND DISPOSAL OF GUARDRAIL**
 STA. 203+13.0 - 203+50.0, LT.
- HAND-PLACED BITUMINOUS CONCRETE MATERIAL, DRIVES**
 STA. 202+05.5 - 202+29.5, LT.
 STA. 202+76.0 - 203.12.0, LT.

EXISTING PAVEMENT SURFACE
 TO BE REMOVED



PROJECT NAME: HARTLAND	
PROJECT NUMBER: STP BPI9(2)	
FILE NAME: 57790BDR_ALI.dgn	PLOT DATE: 2/15/2022
PROJECT LEADER: D.M. PECK	DRAWN BY: C.K. FORD
DESIGNED BY: C.K. FORD	CHECKED BY: D.M. PECK
ROADWAY LAYOUT (1 OF 2)	SHEET 20 OF 56



PORTLAND CEMENT CONCRETE SIDEWALK, 5 INCH
 STA. 100+98.8, RT. - 204+10.6, LT.
 STA. 101+06.0, LT. - 206+43.9, LT.
 STA. 205+27.0, RT. - 103+30.1, LT.
 STA. 103+89.2, RT. - 103+15.0, RT.
 STA. 203+77.6, RT. - 204+40.0, RT.
 STA. 203+50.0, LT. - 203+78.9, LT.
 STA. 205+53.4, LT. - 205+89.9, LT.

PORTLAND CEMENT CONCRETE SIDEWALK, 8 INCH
 STA. 203+78.40 - 204+10.60, LT.

DETECTABLE WARNING SURFACE
 STA. 101+95, LT.
 STA. 101+97, RT.
 STA. 102+88, LT.
 STA. 102+88, RT.
 STA. 204+33, LT.
 STA. 204+33, RT.
 STA. 205+13, RT.

GRANITE SLOPE EDGING
 STA. 3+23.2 - 3+82.2, LT.
 STA. 3+44.0 - 3+74.8, RT.

VERTICAL GRANITE CURB
 STA. 101+06.0, LT. - 206+47.2, LT.
 STA. 100+98.8, RT. - 204+10.6, LT.
 STA. 203+50.0, RT. - 105+15.0, RT.
 STA. 203+50.0, LT. - 203+78.9, LT.
 STA. 103+30.1, LT. - 3+44.0, RT.
 STA. 3+23.2, LT. - 206+18.8, RT.

REMOVAL OF EXISTING CURB
 STA. 101+20.6 - 101+40.8, RT.
 STA. 101+79.3 - 102+09.2, RT.
 STA. 103+21.5 - 105+15.0, RT.
 STA. 101+06.0 - 101+47.1, LT.
 STA. 204+15.6 - 204+50.0, LT.
 STA. 205+48.2 - 205+94.7, LT.
 STA. 205+16.7 - 205+59.1, LT.
 STA. 205+16.7 - 205+76.6, RT.

TYPE 3 SIDEWALK RAMP
 STA. 102+82, RT. (2)

TYPE 5 SIDEWALK RAMP
 STA. 101+96, LT.

TYPE 6 SIDEWALK RAMP
 STA. 101+97, RT.
 STA. 102+88, LT.
 STA. 204+33, LT.
 STA. 205+17, RT.

TYPE 2 DRIVE ENTRANCE, 5.5' WIDE
 STA. 203+94.0, LT.

EXCAVATION OF SURFACES AND PAVEMENTS
 STA. 205+35.0 - 206+50.0, RT.
 STA. 102+50.0 - 103+75.0, LT.
 STA. 102+60.0 - 104+60.0, RT.
 STA. 203+50.0 - 204+00.0, RT.
 STA. 205+00.0 - 206+00.0, LT.

HAND-PLACED BITUMINOUS CONCRETE MATERIAL, DRIVES
 STA. 100+20.0 - 100+41.7, RT.
 STA. 100+45.0 - 101+15.0, RT.
 STA. 203+78.4 - 204+10.6, LT.

REMOVAL AND DISPOSAL OF GUARDRAIL
 STA. 203+50.0 - 203+75.0, LT.

SPECIAL PROVISION (RELOCATE TOWN MONUMENT)
 STA. 205+37.6 - 205+60.8 RT.

SPECIAL PROVISION (UNIT BLOCK RETAINING WALL)
 STA. 103+16.0 - 103+51.0, RT.

EXISTING PAVEMENT SURFACE TO BE REMOVED
 CURB REVEAL (INCHES)

0 20 40
 SCALE IN FEET

PROJECT NAME: HARTLAND	PROJECT NUMBER: STP BP19(2)
FILE NAME: 57790BDR_AL1.dgn	PLOT DATE: 2/23/2022
PROJECT LEADER: D.M. PECK	DRAWN BY: C.K. FORD
DESIGNED BY: C.K. FORD	CHECKED BY: D.M. PECK
ROADWAY LAYOUT (2 OF 2)	SHEET 21 OF 56