

CERTIFICATE OF HIGHWAY MILEAGE
YEAR ENDING FEBRUARY 10, 2008

Fill out form, make and file copy with the Town Clerk, and mail ORIGINAL, before February 20, 2008 to: Vermont Agency of Transportation, Policy and Planning Division, One National Life Drive, Montpelier, VT 05633.

We, the Selectmen or Aldermen or Trustees of BETHEL in WINDSOR County

on an oath state that the mileage of highways, according to Title 19, V.S.A, Sec #305, added 1985, is as follows:

PART I - CHANGES TOTALS - Please fill in and calculate totals.

Table with 6 columns: Town Highways, Previous Mileage, Added Mileage, Subtracted Mileage, Total, Scenic Highways. Rows include Class 1, Class 1 Lane, Class 2, Class 3, State Highway, Class 4, Legal Trail, and Total.

* Mileage for Class 1 Lane, Class 4, and Legal Trail classifications is NOT included in total.

PART II - INFORMATION AND DESCRIPTION OF CHANGES SHOWN ABOVE.

- 1. NEW HIGHWAYS: Please attach Selectmen's "Certificate of Completion and Opening"
2. DISCONTINUED: Please attach SIGNED copy of proceedings (minutes of meeting)
3. RECLASSIFIED/REMEASURED: Please attach SIGNED copy of proceedings (minutes of meeting)
4. SCENIC HIGHWAYS: Please attach a copy of order designating/discontinuing Scenic Highways

IF THERE ARE NO CHANGES IN MILEAGE: Check box and sign below. []

PART III - SIGNATURES - PLEASE SIGN.

Selectmen/ Aldermen/ Trustees Signatures:

Handwritten signature: Bill Richards

T/C/V Clerk Signature:

Handwritten signature: Jean Buerham

Date Filed: 2-4-2008

Please sign ORIGINAL and return it for Transportation signature.

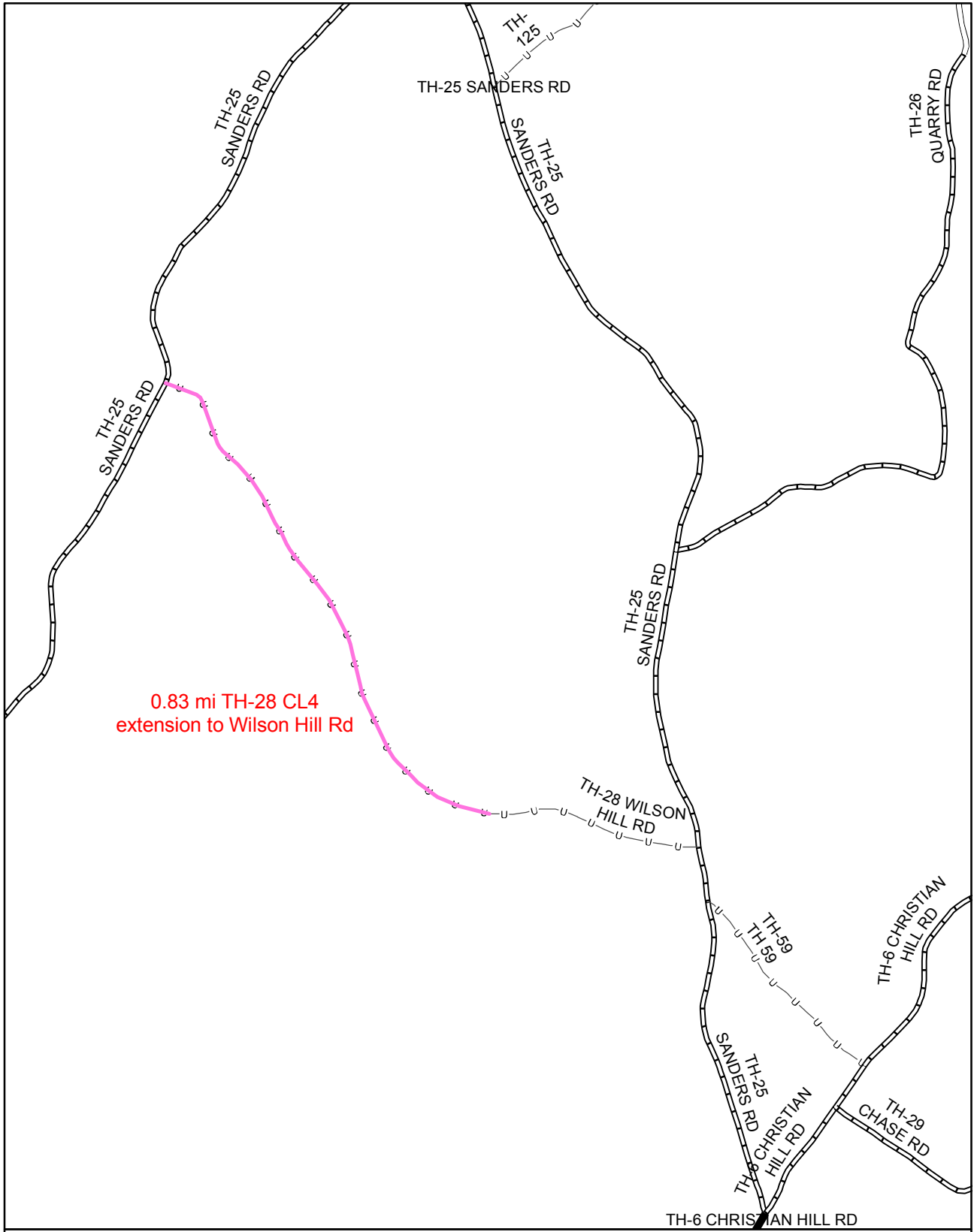
AGENCY OF TRANSPORTATION APPROVAL: Signed copy will be returned to T/C/V Clerk.

APPROVED:

Representative, Agency of Transportation

DATE:

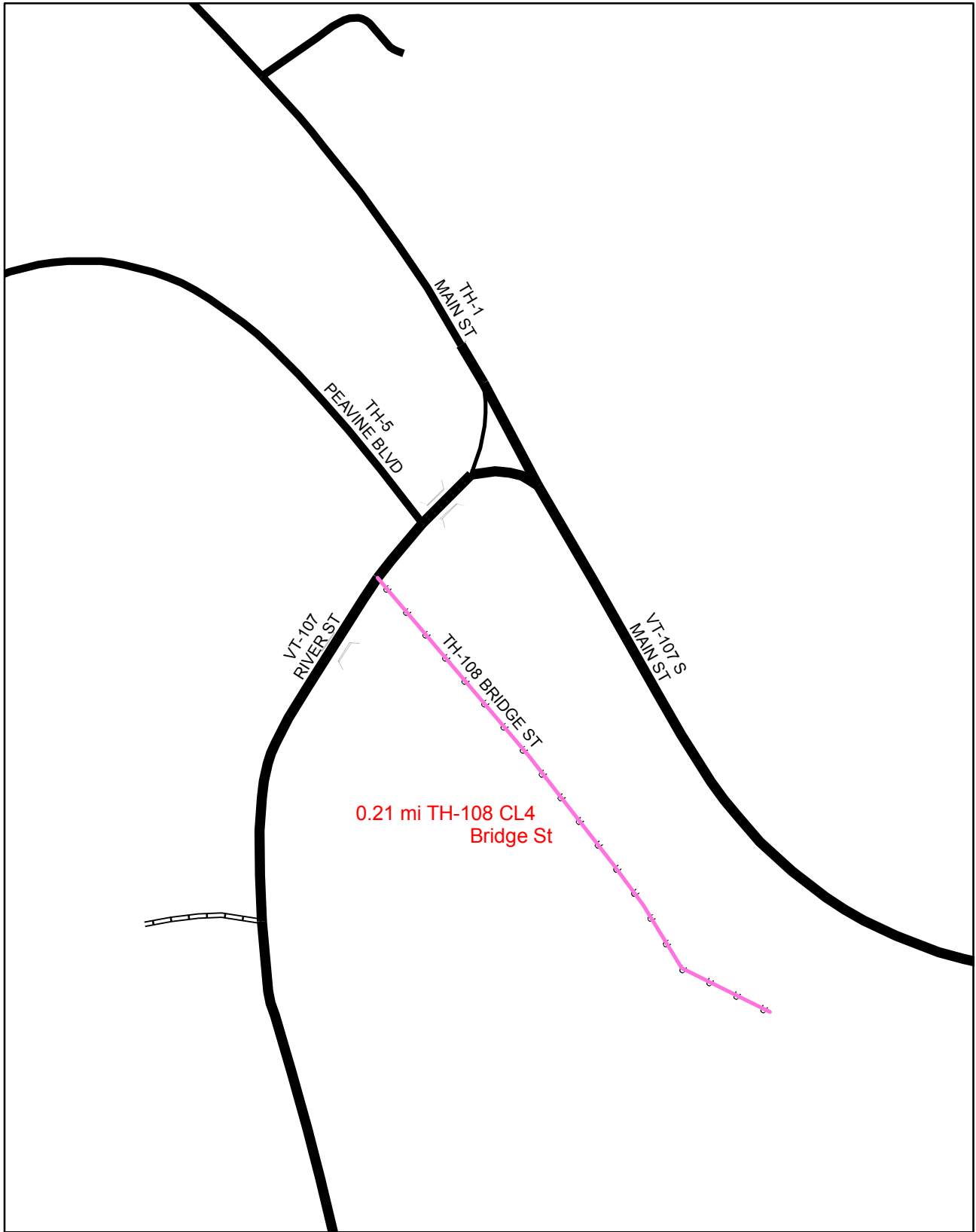
Handwritten date: 4/17/2008



Mileage Certificate Change 2008 -- BETHEL

Mapping Unit
 Policy & Planning Division
 Vermont Agency of Transportation -- January 2008





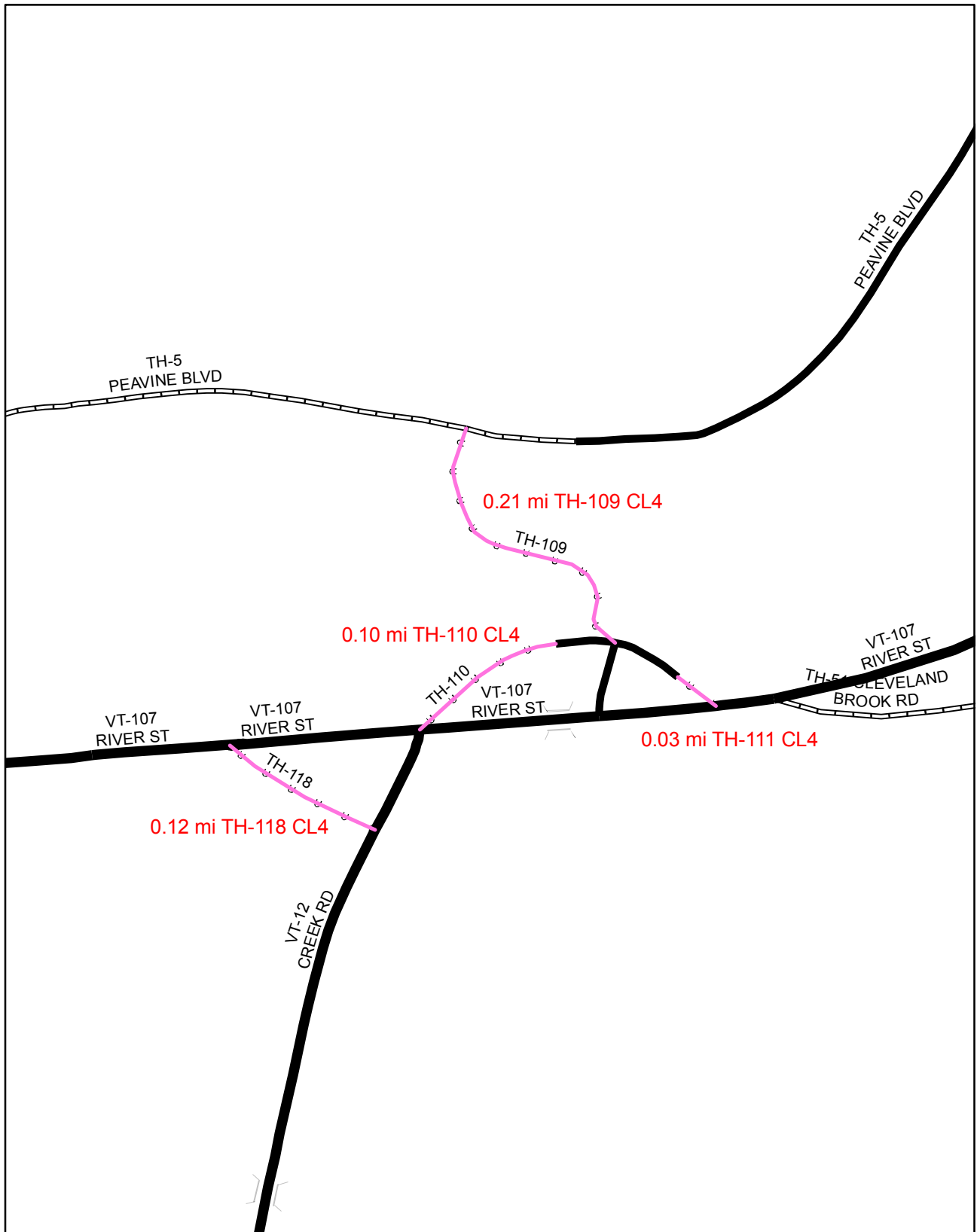
Mileage Certificate Change 2008 -- BETHEL

Mapping Unit
Policy & Planning Division
Vermont Agency of Transportation -- January 2008



0 0.05 Miles

A graphic scale bar consisting of a horizontal line with alternating black and white segments, representing a distance of 0.05 miles.

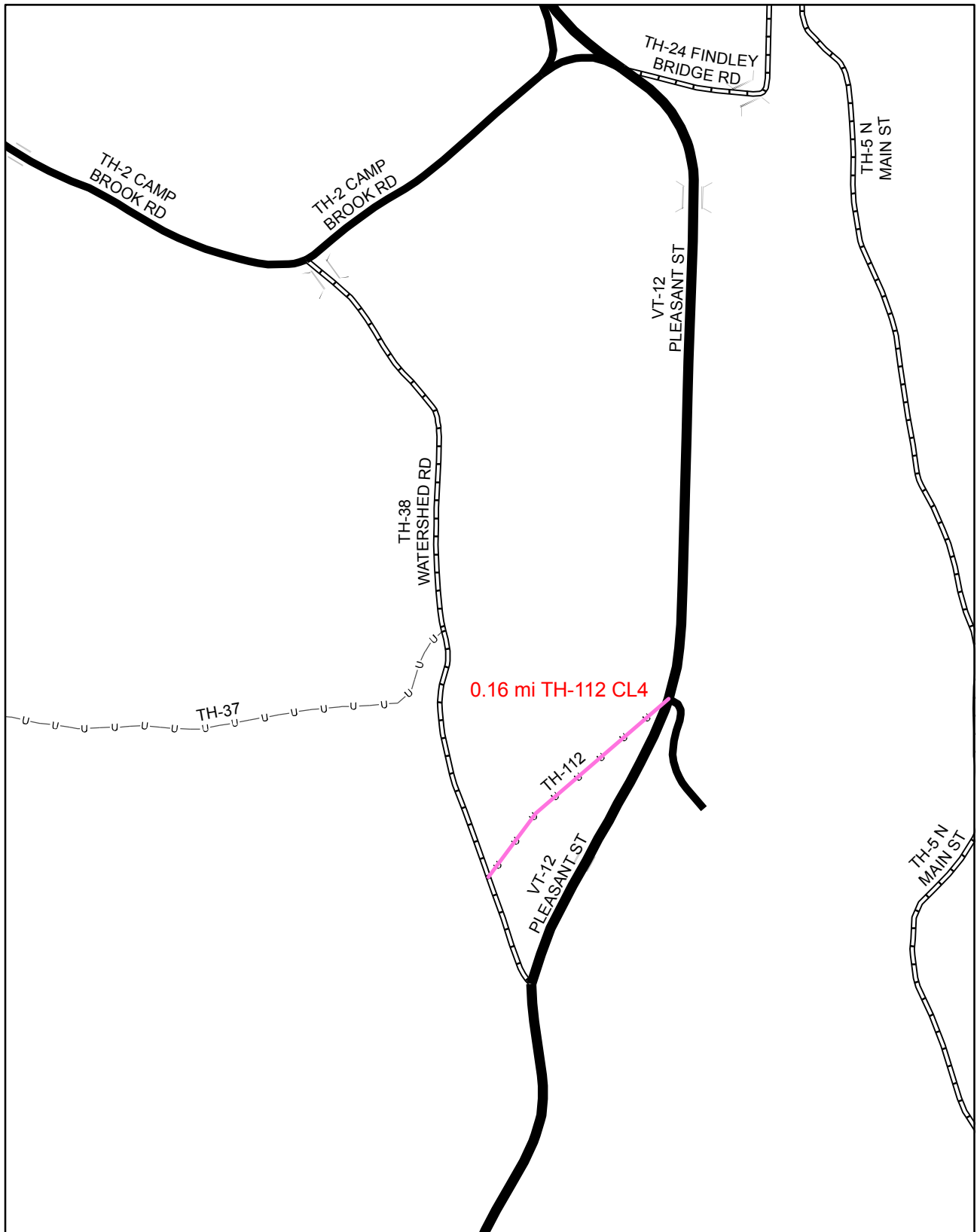


Mileage Certificate Change 2008 -- BETHEL



Mapping Unit
 Policy & Planning Division
 Vermont Agency of Transportation -- January 2008





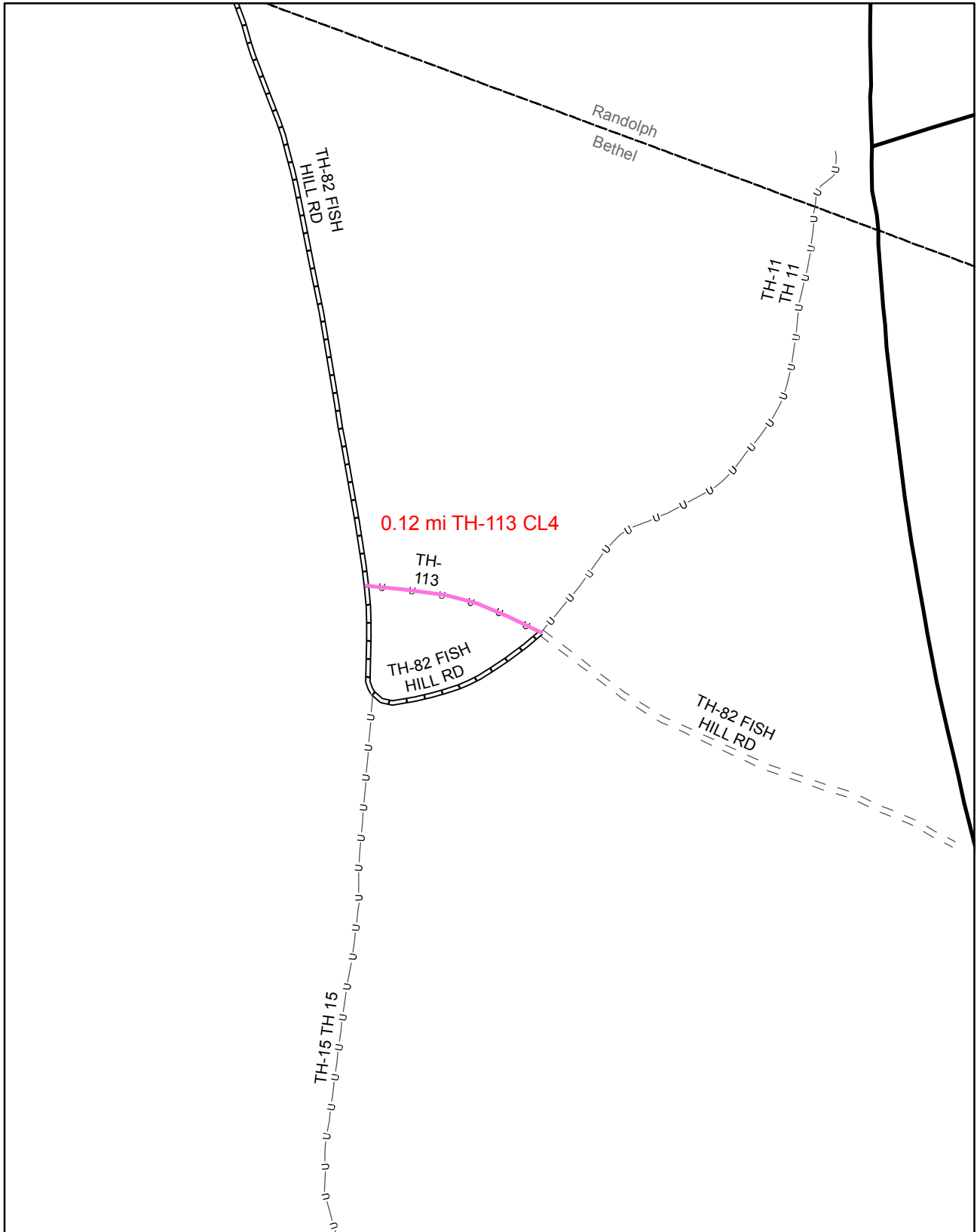
Mileage Certificate Change 2008 -- BETHEL

Mapping Unit
 Policy & Planning Division
 Vermont Agency of Transportation -- January 2008



0 0.1 Miles

A horizontal scale bar with alternating black and white segments, representing a distance of 0.1 miles.

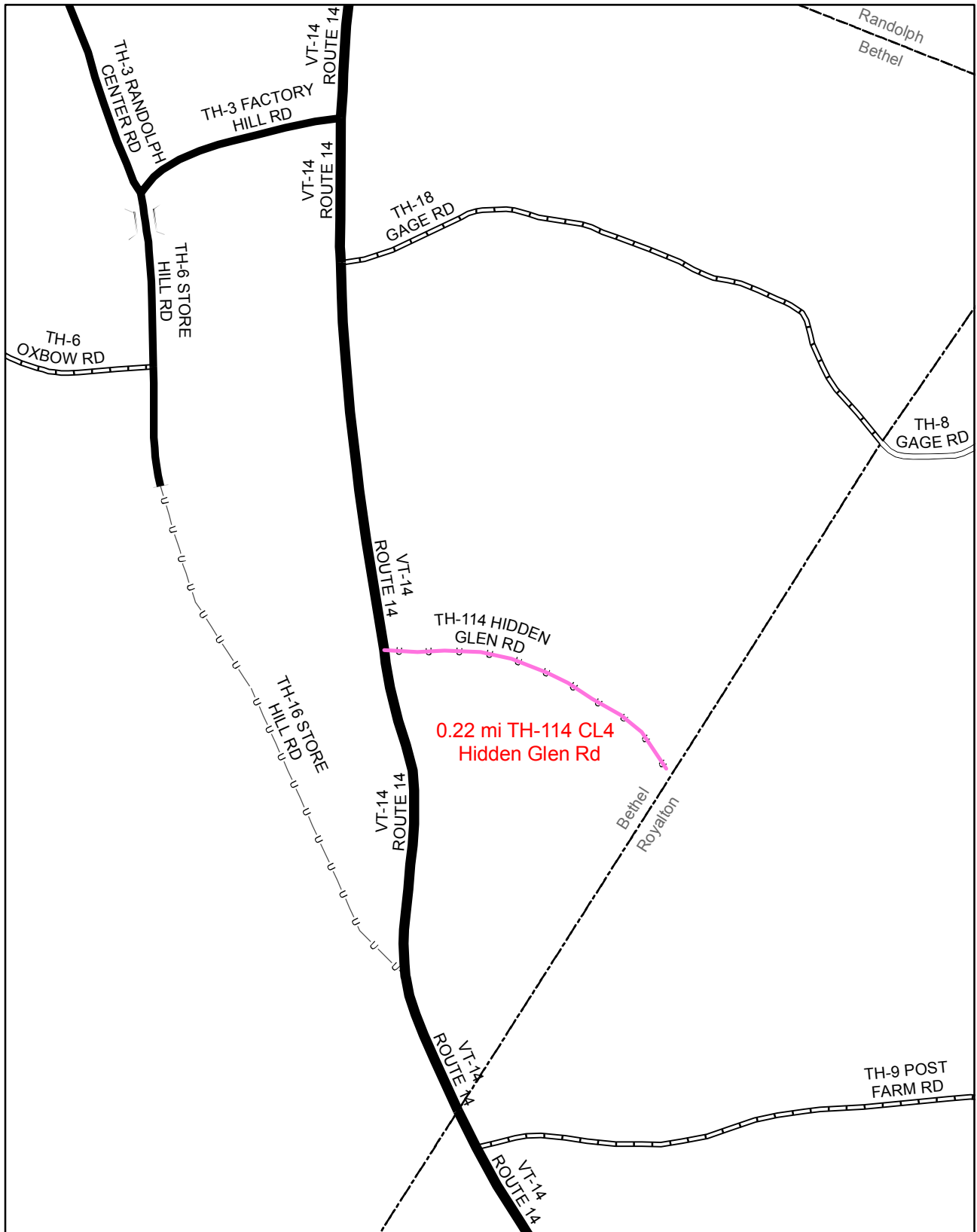


Mileage Certificate Change 2008 -- BETHEL

Mapping Unit
 Policy & Planning Division
 Vermont Agency of Transportation -- January 2008



0 0.1 Miles

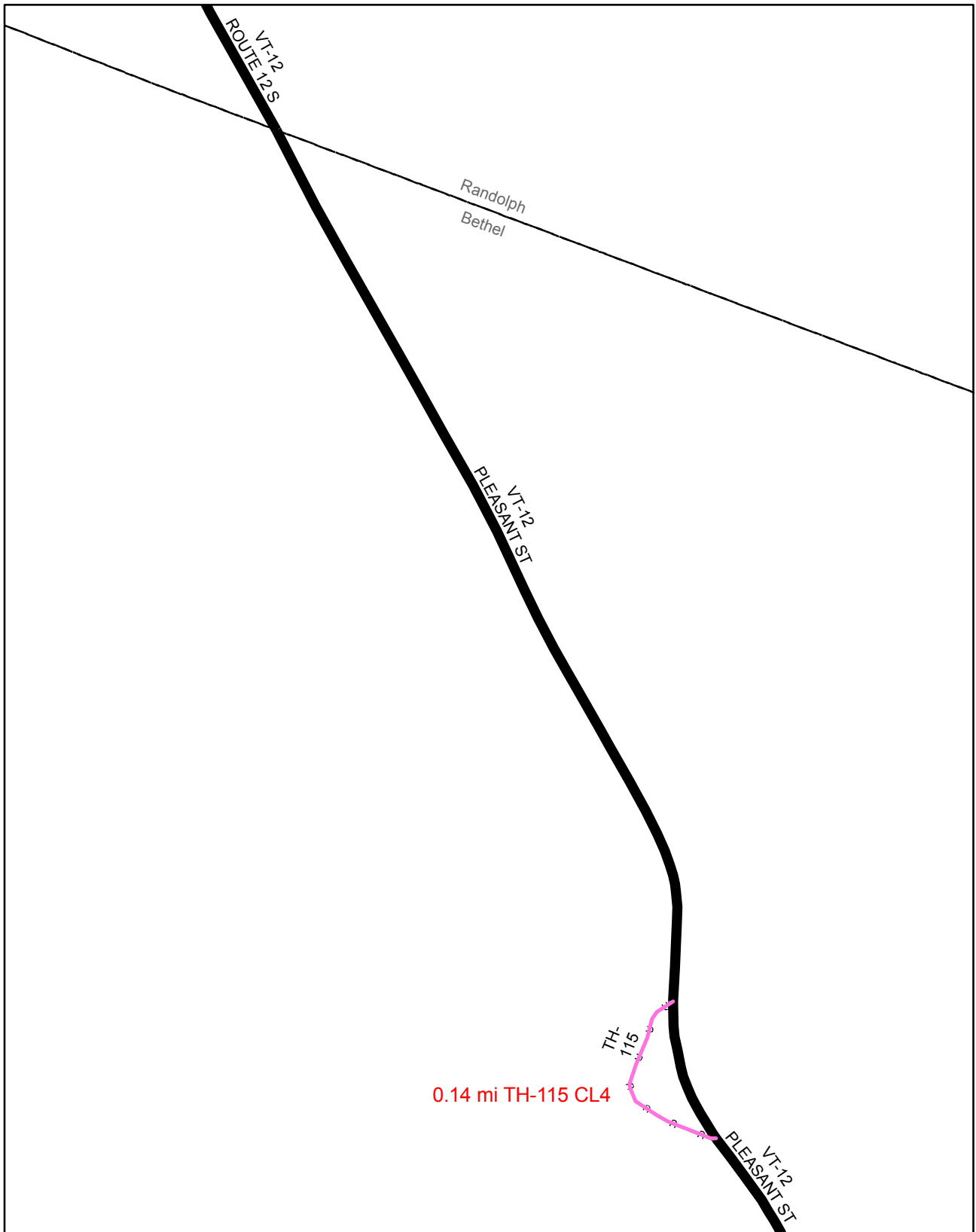


Mileage Certificate Change 2008 -- BETHEL

Mapping Unit
 Policy & Planning Division
 Vermont Agency of Transportation -- January 2008



0 0.1 Miles



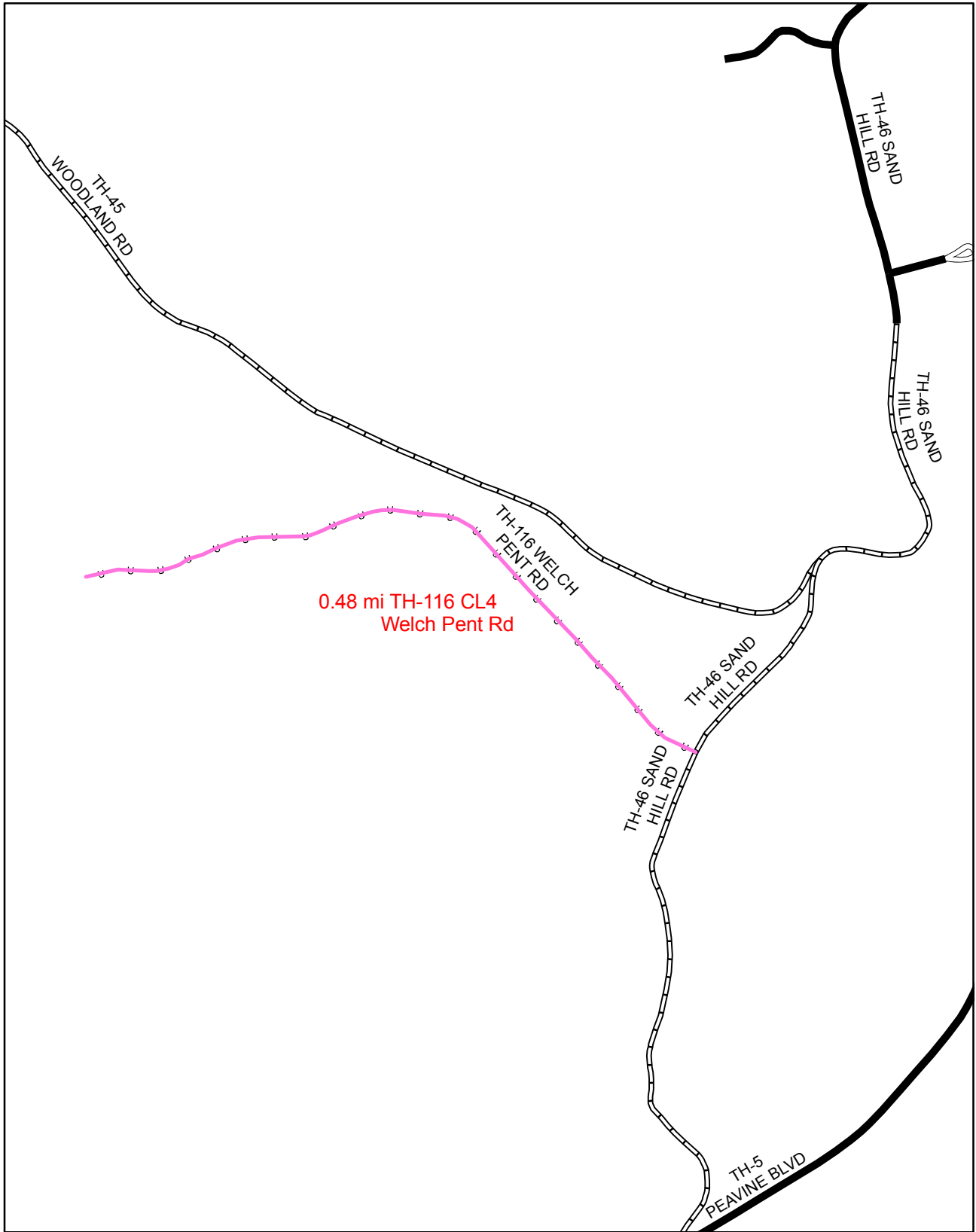
Mileage Certificate Change 2008 -- BETHEL

Mapping Unit
Policy & Planning Division
Vermont Agency of Transportation -- January 2008



0 0.1 Miles

A horizontal scale bar with a black and white pattern, representing a distance of 0.1 miles.

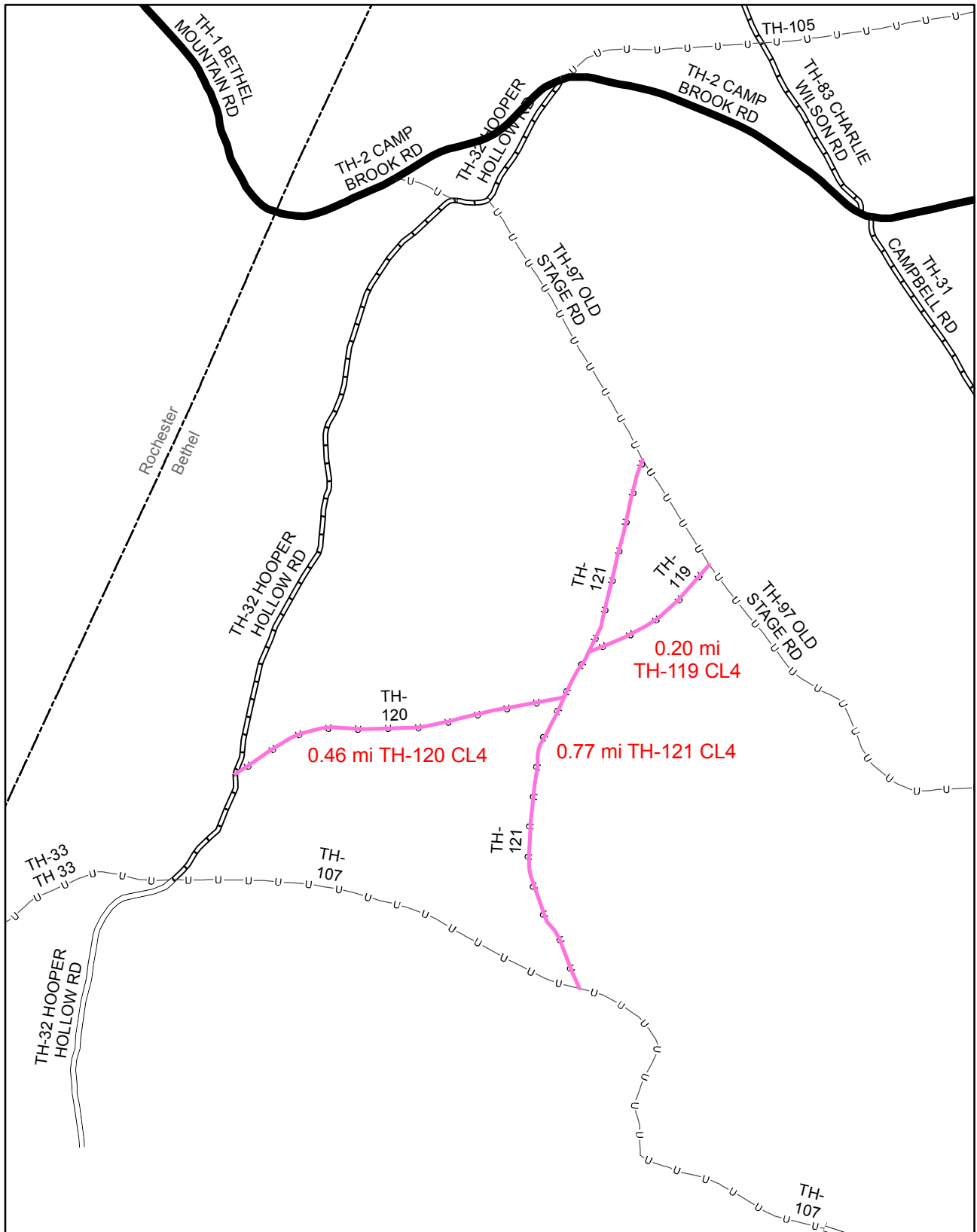


Mileage Certificate Change 2008 -- BETHEL

Mapping Unit
 Policy & Planning Division
 Vermont Agency of Transportation -- January 2008



0 0.1 Miles

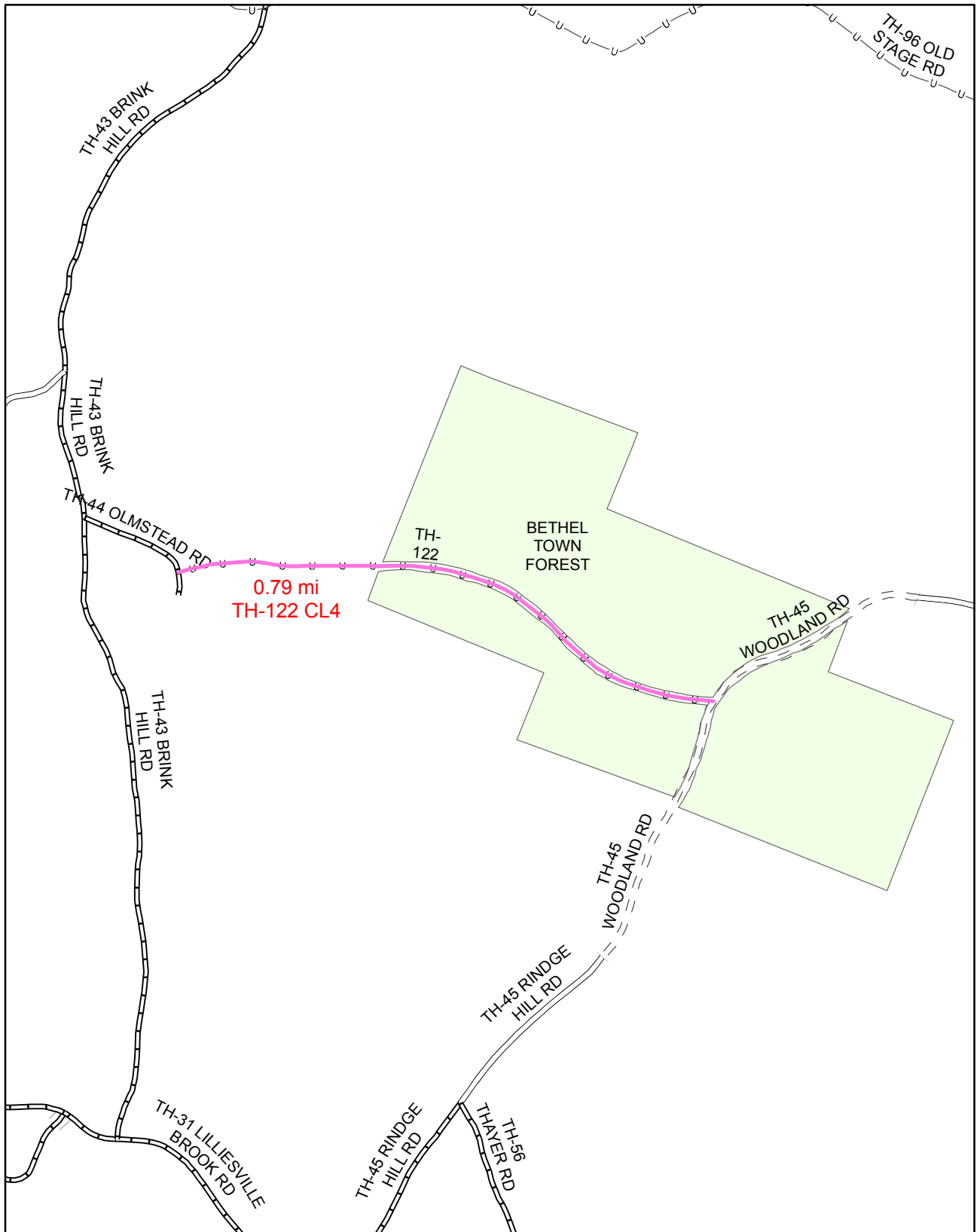


Mileage Certificate Change 2008 -- BETHEL



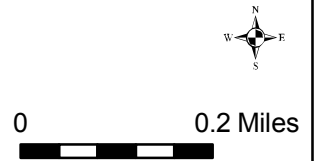
Mapping Unit
 Policy & Planning Division
 Vermont Agency of Transportation -- March 2008

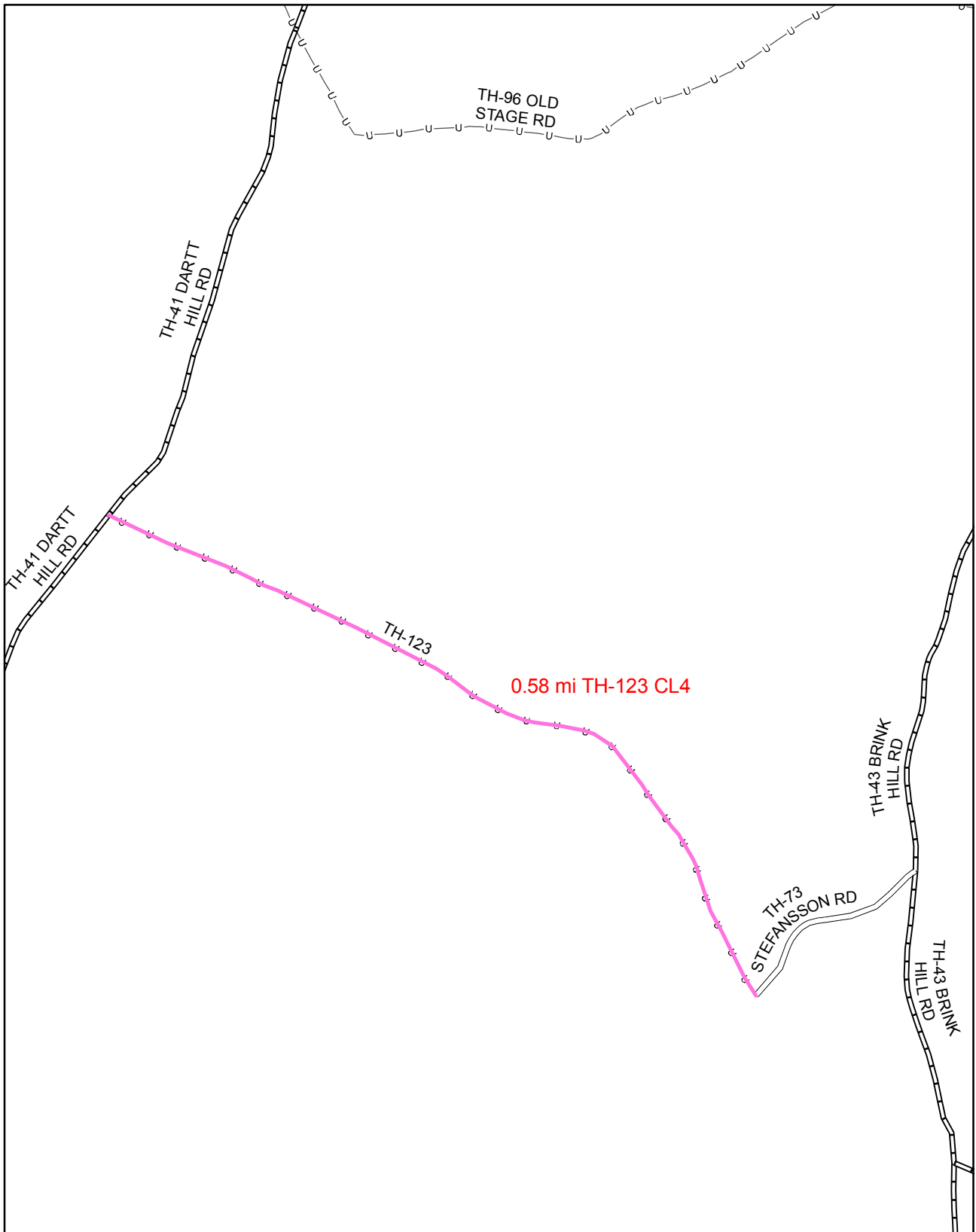




Mileage Certificate Change 2008 -- BETHEL

Mapping Unit
 Policy & Planning Division
 Vermont Agency of Transportation -- March 2008





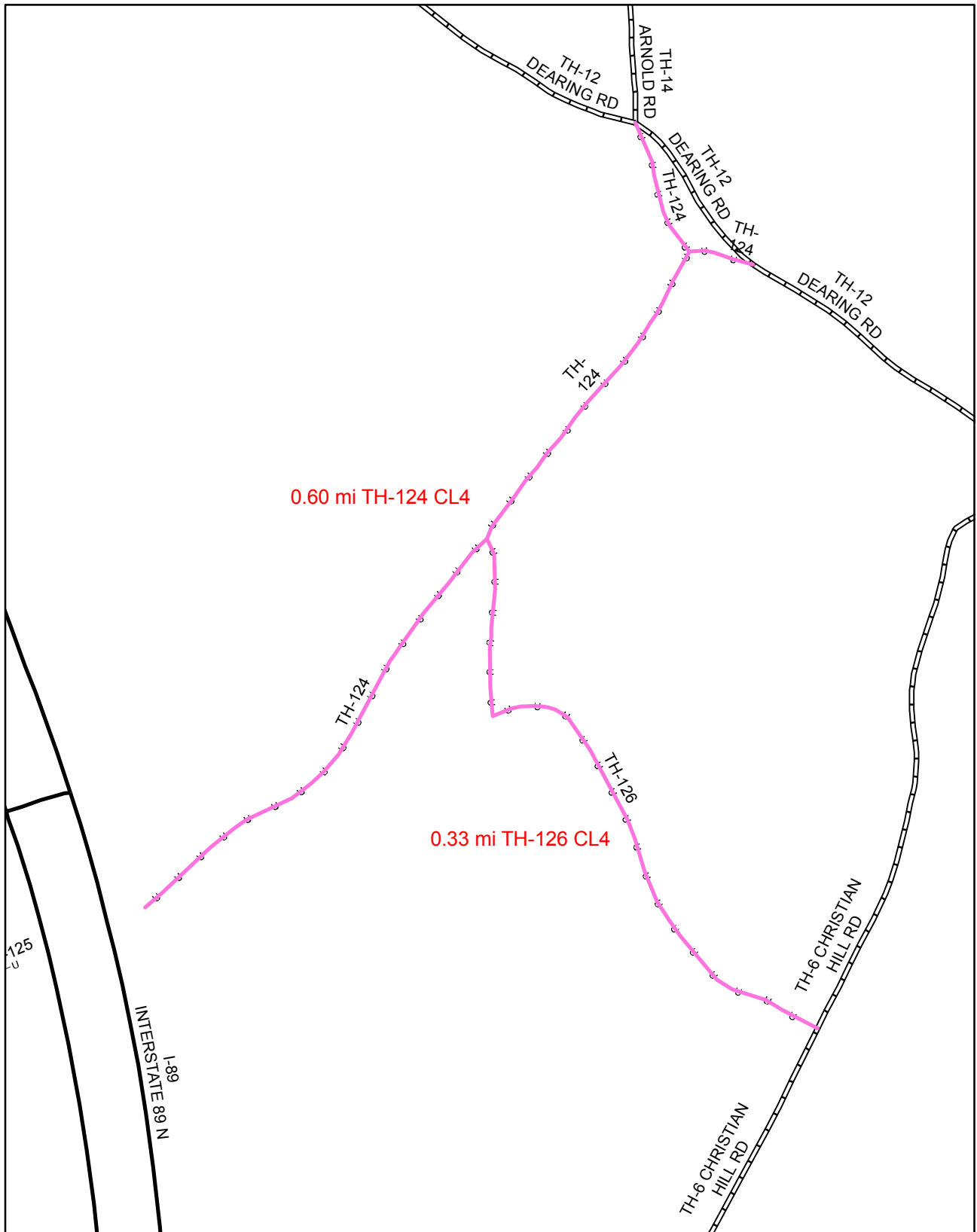
Mileage Certificate Change 2008 -- BETHEL

Mapping Unit
Policy & Planning Division
Vermont Agency of Transportation -- March 2008



0 0.1 Miles

A horizontal scale bar with a black and white alternating pattern, representing a distance of 0.1 miles.

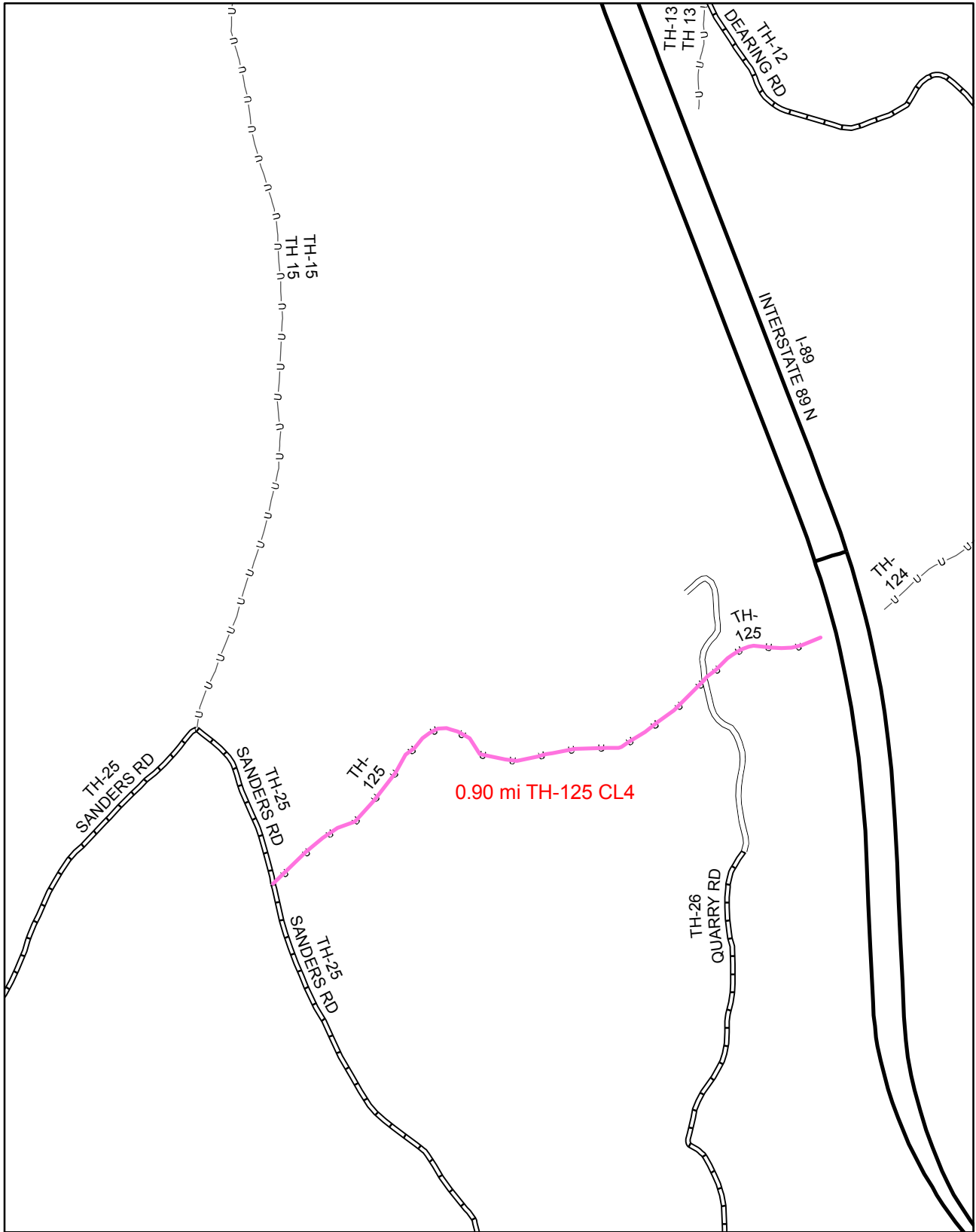


Mileage Certificate Change 2008 -- BETHEL

Mapping Unit
 Policy & Planning Division
 Vermont Agency of Transportation -- January 2008



0 0.1 Miles



Mileage Certificate Change 2008 -- BETHEL

Mapping Unit
 Policy & Planning Division
 Vermont Agency of Transportation -- January 2008



To: Bethel Selectboard *FILE*
 From: Sara Moulton, GIS and Mapping Specialist
 Date: ~~8 February 2008~~ *19 Mar 2008*
 Subject: Bethel - Summary of 2008 Certificate of Highway Mileage Changes

Description Number (based on attached minutes)	Tentative Town Highway Number	Submitted Mileage	Error Correction Adjustment (miles)	Adjusted Town Highway Mileage	Mileage per Description Number
1 ✓	TH-108	0.21			0.21
2 ✓	TH-109	0.21			0.21
3 ✓	TH-110	0.1			0.13
	TH-111	0.03			
4 ✓	TH-112	0.16			0.16
5 ✓	TH-113	0.12			0.12
6	TH-16	<i>mapped properly in 2007. Mileage already accounted for.</i>			
7 ✓	TH-114	0.22			0.22
8 ✓	TH-115	0.14			0.14
9 ✓	TH-116	0.48			0.48
<i>TH-28 →</i> 10	TH-117	0.83			0.83
11 ✓	TH-118	0.12			0.12
12 ✓	TH-119	0.20			0.66
	Th-120	0.46			
13 ✓	TH-121	0.77			0.77
14 ✓	TH-122	0.28	* +0.51	0.79	1.37
	TH-123	0.58			
15 ✓	TH-124	0.60			1.50
	TH-125	0.90			
16 ✓	TH-126	0.33			0.33
Total		6.74	+0.51	7.25	7.25

* This mileage amount is for the section of road traveling through the Bethel Municipal Forest.



State of Vermont
Policy & Planning Division-Mapping Unit
1 National Life Drive
Montpelier, VT 05633-5001
<http://www.aot.state.vt.us>

Agency of Transportation

Telephone: 802-828-2109
Fax: 802-828-2334
Email: sara.moulton@state.vt.us

February 8, 2008

Chair, Selectboard
Bethel
c/o Town Clerk
134 South Main Street
Bethel, VT 05032

Dear Town Clerk and Selectboard:

I have received your Year 2008 Certificate of Highway Mileage. After reviewing the supporting documents, I would like to make an adjustment to the mileage of the section of road between TH-44 and TH-45.

Because of how the Public Lands data layer was drawn on the 2007 town highway map, it appeared that the Agency had already accounted for a public road going through the Bethel Municipal Forest. We hadn't, so the mileage which goes through the Municipal Forest needs to be added.

On the following sheet is a summary of the Class 4 changes submitted with this year's certificate.

If you have any questions, please call me at 802-828-2109 or send e-mail to sara.moulton@state.vt.us

Thank you.

Sincerely,

A handwritten signature in cursive script that reads "Sara Moulton".

Sara Moulton
Mapping & GIS Specialist



To: Bethel Selectboard
 From: Sara Moulton, GIS and Mapping Specialist
 Date: 8 February 2008
 Subject: Bethel - Summary of 2008 Certificate of Highway Mileage Changes

Description Number (based on attached minutes)	Tentative Town Highway Number	Submitted Mileage	Error Correction Adjustment (miles)	Adjusted Town Highway Mileage	Mileage per Description Number
1	TH-108	0.21			0.21
2	TH-109	0.21			0.21
3	TH-110	0.1			0.13
	TH-111	0.03			
4	TH-112	0.16			0.16
5	TH-113	0.12			0.12
6	TH-16				
7	TH-114	0.22			0.22
8	TH-115	0.14			0.14
9	TH-116	0.48			0.48
10	TH-117	0.83			0.83
11	TH-118	0.12			0.12
12	TH-119	0.20			0.66
	Th-120	0.46			
13	TH-121	0.77			0.77
14	TH-122	0.28	* +0.51	0.79	1.37
	TH-123	0.58			
15	TH-124	0.60			1.50
	TH-125	0.90			
16	TH-126	0.33			0.33
Total		6.74	+0.51	7.25	7.25

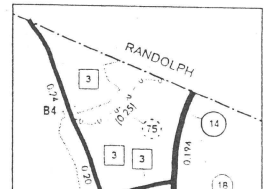
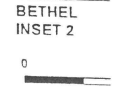
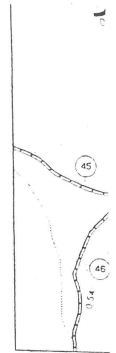
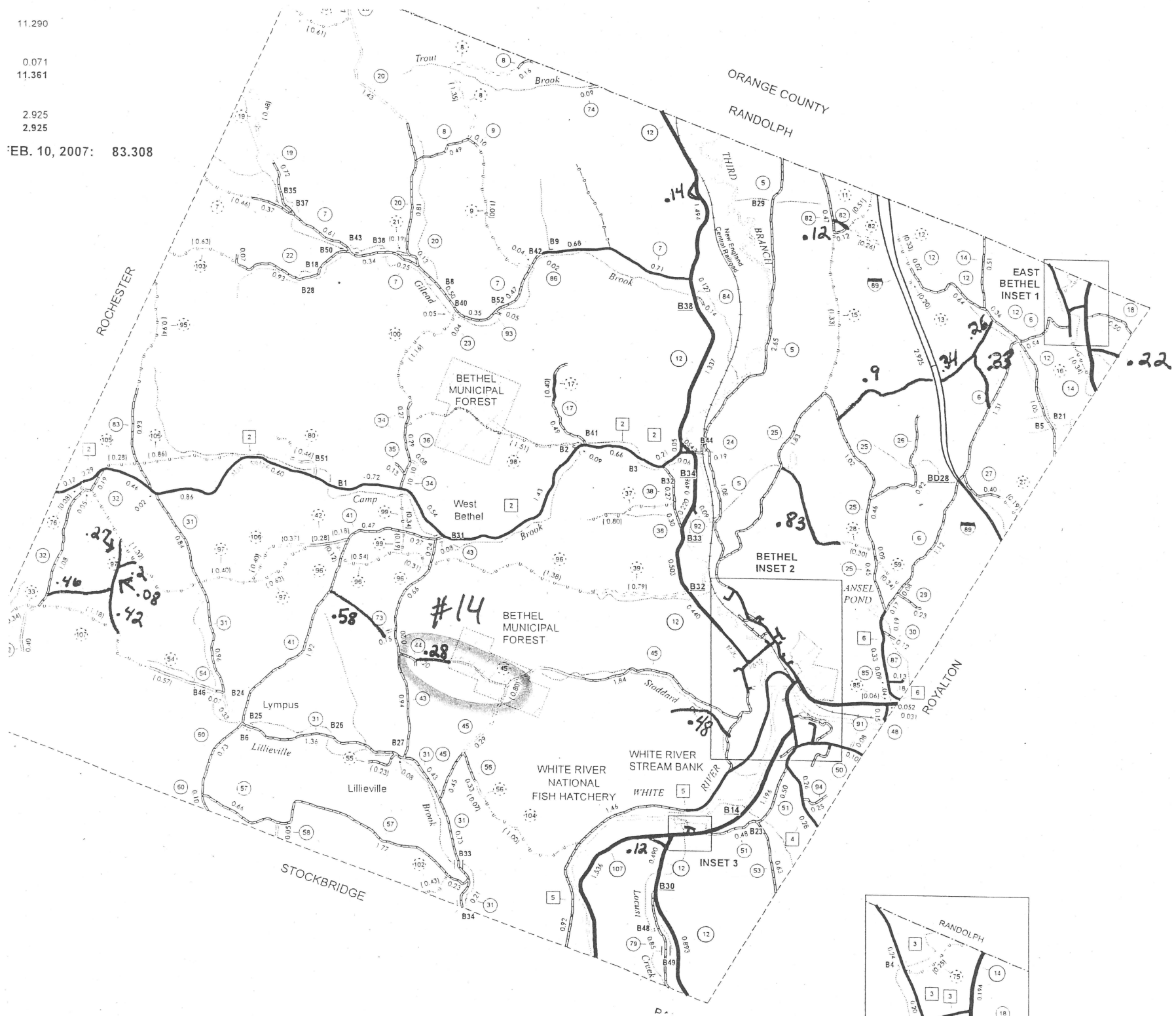
* This mileage amount is for the section of road traveling through the Bethel Municipal Forest.

11.290

0.071
11.361

2.925
2.925

EB. 10, 2007: 83.308



GE
To

Ve

Minutes of the January 28, 2008 meeting of the Board of Selectmen.

Present: Neal Fox, Bill Richards, Eric Benson, Delbert Cloud, Geneva Gaiko, John Dutton, Richard Adams, Joe De Freitas, and Mary Anderson for the "Herald of Randolph."

The meeting was called to order at 6:00 PM by Chairman Neal Fox, the Board first reviewing and approving the weekly payroll and payables. The Constable's report of January 20, 2008 was reviewed and placed on file. The minutes of the January 14, 2008 meeting of the Board of Selectmen were approved by motion of Bill Richards, seconded by Eric Benson and unanimously carried.

The Board next reviewed the January 16, 2008 minutes of the Bethel Planning Commission. With respect to the "Emergency Card" which is to be available for distribution to the public for informational/preparedness purposes, the Board members concurred that it appeared to be complete and appropriate; the only suggestion was from Chairman Fox, that a reference date should be added in order to identify it from any subsequent revisions. Motion to approve the card, subject to the reference date being added, was made by Eric Benson, seconded by Bill Richards and unanimously carried.

The minutes of the Development Review Board for October 2 and December 4, 2007 were reviewed and placed on file. It was agreed that Delbert Cloud should discuss the status of the Town's application for a gravel extraction permit on the Placy/Pratt property on Sand Hill Road with legal counsel, and continue to await word from the Act 250 Board before determining a course of action re. securing permits.

The Town Hall Finance Committee minutes of November 29, 2007 were then reviewed and placed on file. The Regional Planning Commission minutes of November 14 and December 12, 2007 were similarly reviewed and filed.

The Board next reviewed the report from the Trustees of Public Funds for the "Cordrey Fund," as entered on the "Summary of Account of Trustee." By motion of Eric Benson, seconded by Bill Richards and unanimously carried, Chairman Fox was authorized to sign the "Summary of Account of Trustee" and the accompanying "Motion to Allow Account" on behalf of the Board, for submittal to Probate Court.

Several matters pertaining to statutes about class 4 roads, reclassification and discontinuance, were discussed; this was primarily for clarification of statutory provisions and did not require action by the Board.

A January 18, 2008 letter from Kristen Smith was then reviewed and discussed, this being a request for the Board to take up the process of evaluating a portion of the "Rochester Stage Road" for discontinuance. After due discussion, it was agreed that the letter would be taken under advisement and considered further after the Class 4 Road Committee makes its final report and submits any recommendations.

The Board then reviewed the instructions for filing the annual "Certificate of Highway Mileage" with the Vermont Agency of Transportation. Entries for class 1, 2, and 3 highways were found to be correct as per the previous mileage submittal. Given that certain additional class 4 roads have been evaluated by Town officials and the Class 4 Roads Committee, the Board examined the files thus created and determined that the following class 4 roads were legally existent as of February 2006 and should be submitted to the Vermont Agency of Transportation for inclusion on the official Town Highway Map:

- (1) A road commencing on the southeasterly side of Vermont State Route 107 near the easterly end of River Street bridge, so-called, and running adjacent to the main branch of the White River in a generally southeasterly direction ending within lands owned by the Town of Bethel, this road being commonly known as "Bridge Street." 7H-108 0.21 mi
- (2) A road commencing on the northerly side of Town Highway #78 (Poplar Manor Road, so-called) and running in a northerly direction fording the main branch of the White River and intersecting class 2 Town Highway #5 (Peavine Boulevard) near the site of the "Putnam Cemetery," this road being a part of the so-called "Middlebury Turnpike." TH-109 0.21 mi
- (3) Town Highway #78 (Poplar Manor Road) is extended at both the easterly and westerly end points to intersect with Vermont State Routes 107 and 12 at each end. 7H-110 - west 0.10 m
TH-111 - east 0.03 m
- (4) A road commencing on the easterly side of Town Highway #38 (Watershed Road, so-called) and running in a northeasterly direction to intersect the westerly side of Vermont State Route 12; this end being within Town-owned land commonly known as "Fairview Cemetery." TH-112 0.16 mi

- (5) A road commencing on the easterly side of Fish Hill Road, so-called, extending in an easterly direction approximately .12 miles to intersect with Town Highway 11, and being commonly known as a portion of the Benjamin Crane Road. TH-103 0.12 mi
- (6) A road commencing in East Bethel Village, being an extension of Store Hill Road so-called, running in a generally southerly direction crossing the "Middle Branch of the White River" and intersecting with Vermont State Route 14 just northerly of the Bethel-Royalton Town Line. TH-110
- (7) A road commencing on the easterly side of Vermont State Route 14 and running in a generally easterly direction to the Royalton Town Line and being commonly known as "Hidden Glen Road." TH-114 0.23 mi
- (8) A road commencing on the westerly side of Vermont State Route 12 and running in a northwesterly thence northeasterly direction to again intersect Vermont State Route 12, in the vicinity of the so-called "Midway Diner" property and having originally been a segment of Vermont State Route 12, now relocated. TH-115 0.14 mi
- (9) A road commencing on the westerly side of Town Highway #46 (Sand Hill Road) and running in a generally westerly direction approximately .48 miles to intersect with a purported class 4 Town Highway as yet unmapped, the subject highway being commonly known as the "Welch Pent Road." TH-116 0.48 mi
- (10) Being an extension from the westerly end of class 4 Town Highway #28 running in a westerly and northwesterly direction to intersect with Town Highway #25 (Sanders Road) this being commonly known as "Wilson Hill Road." TH-117 0.83 mi
- (11) A road commencing on the northwesterly side of Vermont State Route 12 and running in a northwesterly direction to intersect with Vermont State Route 107, and being a former alignment of said latter highway. TH-118 0.12 mi
- (12) A road commencing on the southwesterly side of the "Rochester Stage Road" so-called, and running in a southwesterly direction to intersect with Town Highway #32 (Hooper Hollow Road). TH-119 - 0.20 mi
- (13) A road commencing at the westerly end of Town Highway #54 (Bryant Road) and running in a northerly direction to intersect with the "Rochester Stage Road." TH-120 - 0.46 mi
- (14) Being two segments of highway which connect with previously mapped segments of Town Highway, collectively being the "Original Stage Road to Rochester": (a) a road commencing at the presently mapped westerly end of a class 4 road at the westerly edge of the Bethel Town Forest commonly known as the "Quimby Lot" and running in a westerly direction to intersect Town Highway #44 (Olmstead Road) and (b) commencing at the presently mapped westerly end point of Bethel Town Highway #73 (Stefansson Road) and continuing in a westerly direction to intersect with Town Highway #41 (Dart Hill Road). TH-121 - 0.77 mi
- (15) A road commencing on the southwesterly side of Town Highway #12 (Dearing Road) and running in a west-southwesterly direction to intersect with Town Highway #25 (Sanders Road) this corridor being bisected by the Interstate 89 corridor, but having been originally a portion of an old road running between Bethel and Randolph Center (Old Road to Randolph Center). TH-122 0.28 mi
+ 0.51 mi
- (16) A road commencing on the northwesterly side of Town Highway #6 (Christian Hill Road) and running in a northwesterly direction to intersect with the "Old Road to Randolph Center," being known as the "Jones' Pent Road," and being laid out two rods in width. TH-123 0.58 mi

0.27 + 0.05 + 0.42
= 0.77

An "Added Mileage" entry of 6.74 miles of class 4 roads was then made on the "Certificate of Highway Mileage for the year ending February 10, 2008," this being the aggregate additional mileage for the above described roads. The submittal for inclusion of the subject class 4 roads for mapping and the "Certificate of Highway Mileage" was then formally approved by motion of Eric Benson, seconded by Bill Richards and unanimously carried. The Board members then signed the "Certificate" accordingly.

A brief review was made of Town concerns associated with the State's replacement of the River Street Bridge. It was noted that a meeting originally scheduled for January 30, 2008 on this project has been postponed at the request of the State engineers and will be re-scheduled in the near future.

A January 17, 2008 transmittal from the Vermont Department of Motor Vehicles was next discussed. Delbert Cloud will file the data re. weight limitations due to wood decks on four Town bridges. Cloud will also separately prepare a list of provisions associated with Town-issued over-weight/over-sized vehicle permits for the Board's review at a forthcoming meeting.

A January 14, 2008 memo from Steven E. Jeffrey, Executive Director of the Vermont League of Cities and Towns, was discussed in consort with a proposed "Resolution" on Vermont Education Finance and Property Tax Reform which had been prepared by the Vermont Coalition of Municipalities. Motion was made by Eric Benson to table the subject "Resolution" request, this motion being seconded by Bill Richards and unanimously carried.

A copy of the final draft of the Warning for the Annual Town Meeting was reviewed and found to be correct and appropriate for posting, and publishing in the Annual Town Report.

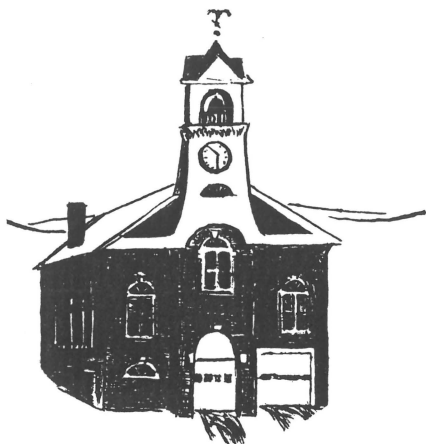
The following communications were reviewed and placed on file: (1) a January 24, 2008 notice of grant award from the Vermont Department of Homeland Security in the amount of \$13,341.00 for Fire Department communication equipment, (2) a December 26, 2007 letter from the Composting Association of Vermont, (3) notice from the Vermont League of Cities and Towns re. the annual "Local Government Day" in the Legislature, (4) the January 2008 newsletter of the regional planning commission, and (5) a January 22, 2008 letter from the Vermont Division of Historic Preservation confirming that the National Register nomination for Old Christ Church has been submitted to the National Park Service.

With no further business to attend, the motion to adjourn was made by Eric Benson at 9:25 PM, this being seconded by Bill Richards and unanimously carried.

Neal Fox

Bill Richards

Eric Benson



Town of Bethel, Vermont

Incorporated
1779

OFFICE OF THE TOWN MANAGER

134 South Main Street
Bethel, Vermont 05032
Tel 802/234-9340
Fax 802/234-6840

February 4, 2008

Vermont
Agency of Transportation

FEB - 5 2008

Policy & Planning Division

Sara Moulton
Mapping & GIS Specialist
Policy & Planning Division – Mapping Unit
One National Life Drive, Drawer 33
Montpelier, VT 05633-5001

RE: Certificate of Highway Mileage

Dear Ms. Moulton:

The following is enclosed with regard to Bethel's filing of the Certificate of Highway Mileage:

- Certificate of Highway Mileage signed by the Board of Selectmen and the Town Clerk.
- A copy of the January 28, 2008 meeting minutes of the Board of Selectmen approving the addition of class 4 highways to the Certificate of Highway Mileage with a description of each highway to be added. These highways were legally established prior to February 10, 2006.
- Copies of various sections of our current highway map with the additional class 4 highways highlighted in yellow.
- A Tax Map Sheet Index provided by Cartographic Technologies with the additional class 4 highways highlighted in red ink.

In addition to the sections of class 4 highway being submitted with this certificate, please note that the Selectboard also approved additional segments which currently appear on the highway map, but did not appear on our previous copy. These segments are highlighted in pink.

Please call me at (802) 234-9340 if you have any questions regarding the enclosed information.

Truly yours,

Delbert Cloud
Town Manager

Enclosures

Minutes of the January 28, 2008 meeting of the Board of Selectmen.

Present: Neal Fox, Bill Richards, Eric Benson, Delbert Cloud, Geneva Gaiko, John Dutton, Richard Adams, Joe De Freitas, and Mary Anderson for the "Herald of Randolph."

The meeting was called to order at 6:00 PM by Chairman Neal Fox, the Board first reviewing and approving the weekly payroll and payables. The Constable's report of January 20, 2008 was reviewed and placed on file. The minutes of the January 14, 2008 meeting of the Board of Selectmen were approved by motion of Bill Richards, seconded by Eric Benson and unanimously carried.

The Board next reviewed the January 16, 2008 minutes of the Bethel Planning Commission. With respect to the "Emergency Card" which is to be available for distribution to the public for informational/preparedness purposes, the Board members concurred that it appeared to be complete and appropriate; the only suggestion was from Chairman Fox, that a reference date should be added in order to identify it from any subsequent revisions. Motion to approve the card, subject to the reference date being added, was made by Eric Benson, seconded by Bill Richards and unanimously carried.

The minutes of the Development Review Board for October 2 and December 4, 2007 were reviewed and placed on file. It was agreed that Delbert Cloud should discuss the status of the Town's application for a gravel extraction permit on the Placy/Pratt property on Sand Hill Road with legal counsel, and continue to await word from the Act 250 Board before determining a course of action re. securing permits.

The Town Hall Finance Committee minutes of November 29, 2007 were then reviewed and placed on file. The Regional Planning Commission minutes of November 14 and December 12, 2007 were similarly reviewed and filed.

The Board next reviewed the report from the Trustees of Public Funds for the "Cordrey Fund," as entered on the "Summary of Account of Trustee." By motion of Eric Benson, seconded by Bill Richards and unanimously carried, Chairman Fox was authorized to sign the "Summary of Account of Trustee" and the accompanying "Motion to Allow Account" on behalf of the Board, for submittal to Probate Court.

Several matters pertaining to statutes about class 4 roads, reclassification and discontinuance, were discussed; this was primarily for clarification of statutory provisions and did not require action by the Board.

A January 18, 2008 letter from Kristen Smith was then reviewed and discussed, this being a request for the Board to take up the process of evaluating a portion of the "Rochester Stage Road" for discontinuance. After due discussion, it was agreed that the letter would be taken under advisement and considered further after the Class 4 Road Committee makes its final report and submits any recommendations.

The Board then reviewed the instructions for filing the annual "Certificate of Highway Mileage" with the Vermont Agency of Transportation. Entries for class 1, 2, and 3 highways were found to be correct as per the previous mileage submittal. Given that certain additional class 4 roads have been evaluated by Town officials and the Class 4 Roads Committee, the Board examined the files thus created and determined that the following class 4 roads were legally existent as of February 2006 and should be submitted to the Vermont Agency of Transportation for inclusion on the official Town Highway Map:

- (1) A road commencing on the southeasterly side of Vermont State Route 107 near the easterly end of River Street bridge, so-called, and running adjacent to the main branch of the White River in a generally southeasterly direction ending within lands owned by the Town of Bethel, this road being commonly known as "Bridge Street." TH-108 0.21 mi
- (2) A road commencing on the northerly side of Town Highway #78 (Poplar Manor Road, so-called) and running in a northerly direction fording the main branch of the White River and intersecting class 2 Town Highway #5 (Peavine Boulevard) near the site of the "Putnam Cemetery," this road being a part of the so-called "Middlebury Turnpike." TH-109 0.21 mi
- (3) Town Highway #78 (Poplar Manor Road) is extended at both the easterly and westerly end points to intersect with Vermont State Routes 107 and 12 at each end. TH-110 - west 0.10 mi
TH-111 - east 0.03 mi
- (4) A road commencing on the easterly side of Town Highway #38 (Watershed Road, so-called) and running in a northeasterly direction to intersect the westerly side of Vermont State Route 12, this end being within Town-owned land commonly known as "Fairview Cemetery." TH-112 0.16 mi

- (5) A road commencing on the easterly side of Fish Hill Road, so-called, extending in an easterly direction approximately .12 miles to intersect with Town Highway 11, and being commonly known as a portion of the Benjamin Crane Road. TH-113 0.12 mi
- (6) A road commencing in East Bethel Village, being an extension of Store Hill Road so-called, running in a generally southerly direction crossing the "Middle Branch of the White River" and intersecting with Vermont State Route 14 just northerly of the Bethel-Royalton Town Line. TH-16
- (7) A road commencing on the easterly side of Vermont State Route 14 and running in a generally easterly direction to the Royalton Town Line and being commonly known as "Hidden Glen Road." TH-114 0.22 mi
- (8) A road commencing on the westerly side of Vermont State Route 12 and running in a northwesterly thence northeasterly direction to again intersect Vermont State Route 12, in the vicinity of the so-called "Midway Diner" property and having originally been a segment of Vermont State Route 12, now relocated. TH-115 0.14 mi
- (9) A road commencing on the westerly side of Town Highway #46 (Sand Hill Road) and running in a generally westerly direction approximately .48 miles to intersect with a purported class 4 Town Highway as yet unmapped, the subject highway being commonly known as the "Welch Pent Road." TH-116 0.48 mi
- ✕ TH-28 → (10) Being an extension from the westerly end of class 4 Town Highway #28 running in a westerly and northwesterly direction to intersect with Town Highway #25 (Sanders Road) this being commonly known as "Wilson Hill Road." TH-117 0.83 mi
- (11) A road commencing on the northwesterly side of Vermont State Route 12 and running in a northwesterly direction to intersect with Vermont State Route 107, and being a former alignment of said latter highway. TH-118 0.12 mi
- (12) A road commencing on the southwesterly side of the "Rochester Stage Road" so-called, and running in a southwesterly direction to intersect with Town Highway #32 (Hooper Hollow Road). TH-119 — 0.20 mi
TH-120 — 0.46 mi
- 0.27 + 0.08 + 0.42 = 0.77 (13) A road commencing at the westerly end of Town Highway #54 (Bryant Road) and running in a northerly direction to intersect with the "Rochester Stage Road." TH-121 — 0.77 mi
- (14) Being two segments of highway which connect with previously mapped segments of Town Highway, collectively being the "Original Stage Road to Rochester": (a) a road commencing at the presently mapped westerly end of a class 4 road at the westerly edge of the Bethel Town Forest commonly known as the "Quimby Lot" and running in a westerly direction to intersect Town Highway #44 (Olmstead Road) and (b) commencing at the presently mapped westerly end point of Bethel Town Highway #73 (Stefansson Road) and continuing in a westerly direction to intersect with Town Highway #41 (Dart Hill Road). TH-122 0.28 mi
+ 0.51 mi
TH-123 0.58 mi
- (15) A road commencing on the southwesterly side of Town Highway #12 (Dearing Road) and running in a west-southwesterly direction to intersect with Town Highway #25 (Sanders Road) this corridor being bisected by the Interstate 89 corridor, but having been originally a portion of an old road running between Bethel and Randolph Center (Old Road to Randolph Center). TH-124 0.60 mi
TH-125 0.90 mi
- (16) A road commencing on the northwesterly side of Town Highway #6 (Christian Hill Road) and running in a northwesterly direction to intersect with the "Old Road to Randolph Center," being known as the "Jones' Pent Road," and being laid out two rods in width. TH-126 0.33 mi

An "Added Mileage" entry of 6.74 miles of class 4 roads was then made on the "Certificate of Highway Mileage for the year ending February 10, 2008," this being the aggregate additional mileage for the above described roads. The submittal for inclusion of the subject class 4 roads for mapping and the "Certificate of Highway Mileage" was then formally approved by motion of Eric Benson, seconded by Bill Richards and unanimously carried. The Board members then signed the "Certificate" accordingly.

A brief review was made of Town concerns associated with the State's replacement of the River Street Bridge. It was noted that a meeting originally scheduled for January 30, 2008 on this project has been postponed at the request of the State engineers and will be re-scheduled in the near future.

A January 17, 2008 transmittal from the Vermont Department of Motor Vehicles was next discussed. Delbert Cloud will file the data re. weight limitations due to wood decks on four Town bridges. Cloud will also separately prepare a list of provisions associated with Town-issued over-weight/over-sized vehicle permits for the Board's review at a forthcoming meeting.

A January 14, 2008 memo from Steven E. Jeffrey, Executive Director of the Vermont League of Cities and Towns, was discussed in consort with a proposed "Resolution" on Vermont Education Finance and Property Tax Reform which had been prepared by the Vermont Coalition of Municipalities. Motion was made by Eric Benson to table the subject "Resolution" request, this motion being seconded by Bill Richards and unanimously carried.

A copy of the final draft of the Warning for the Annual Town Meeting was reviewed and found to be correct and appropriate for posting, and publishing in the Annual Town Report.

The following communications were reviewed and placed on file: (1) a January 24, 2008 notice of grant award from the Vermont Department of Homeland Security in the amount of \$13,341.00 for Fire Department communication equipment, (2) a December 26, 2007 letter from the Composting Association of Vermont, (3) notice from the Vermont League of Cities and Towns re. the annual "Local Government Day" in the Legislature, (4) the January 2008 newsletter of the regional planning commission, and (5) a January 22, 2008 letter from the Vermont Division of Historic Preservation confirming that the National Register nomination for Old Christ Church has been submitted to the National Park Service.

With no further business to attend, the motion to adjourn was made by Eric Benson at 9:25 PM, this being seconded by Bill Richards and unanimously carried.

Neal Fox

Bill Richards

Eric Benson

Moulton, Sara

From: Croft, Johnathan
Sent: Friday, March 30, 2007 1:38 PM
To: Moulton, Sara
Subject: Bethel ROW generated centerlines

Sara,

The Bethel rights of way have been collapsed into single centerlines and can be found in the following layer –

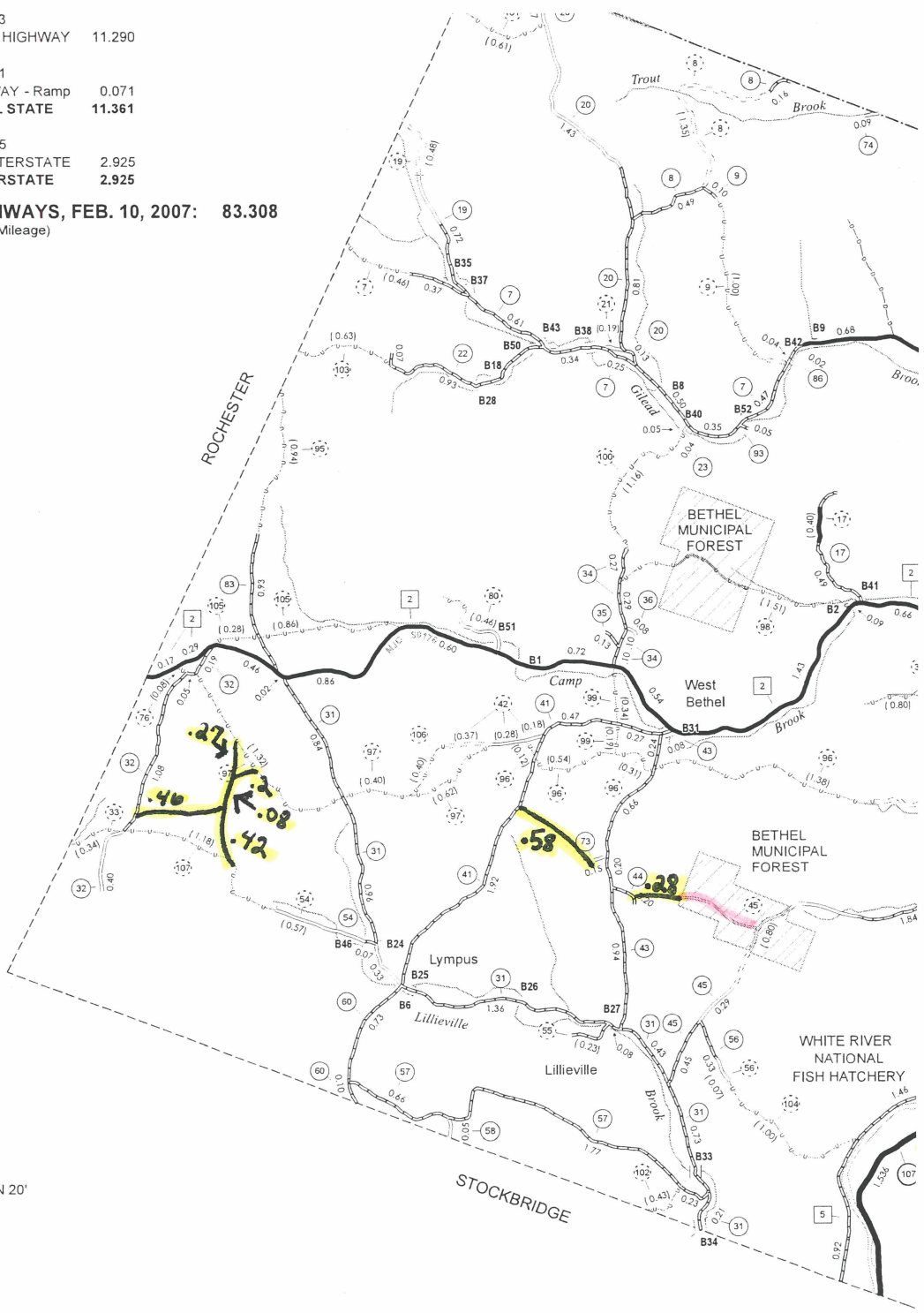
V:\Projects\Shared\Mapping\HighwayMappingSystem\HMS_Geodatabases
\HighwayUpdates.mdb
NewAlignments
BethelRightsOfWay_SingleLine

Johnathan

190	VT-107	4.273	
(0.250)	TOTAL STATE HIGHWAY	11.290	
(0.080)	STATE HIGHWAY - Ramp		
190	VT-107	0.071	
150	TOTAL STATE HIGHWAY - Ramp	0.071	
150	TOTAL STATE	11.361	
(0.460)	INTERSTATE		
190	I-89	2.925	
130	TOTAL INTERSTATE	2.925	
40	TOTAL INTERSTATE	2.925	
140	(0.060)		

TOTAL, TRAVELED HIGHWAYS, FEB. 10, 2007: 83.308
 (Excludes Class 4 and Legal Trail Mileage)

- (0.940)
- (2.350)
- (2.340)
- (1.510)
- (0.530)
- (1.160)
- (0.610)
- (0.430)
- (0.630)
- (1.000)
- (1.140)
- (0.400)
- (1.180)
- 190 27.210
- tionally Class 4



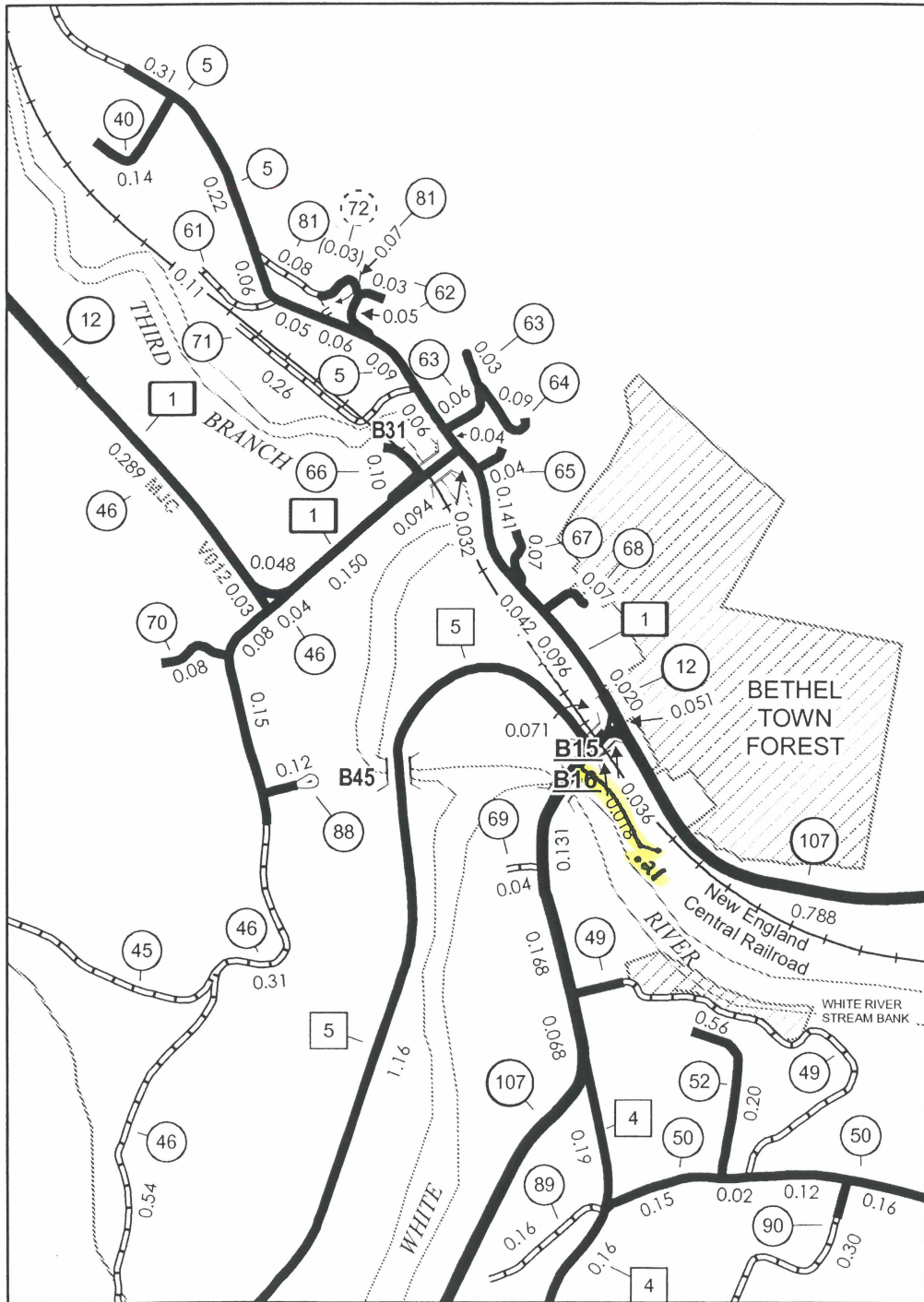
- ☐ PUBLIC LAND
- POLITICAL SUBDIVISIONS**
- STATE BOUNDARY
- - - COUNTY BOUNDARY
- - - TOWN BOUNDARY
- - - VILLAGE BOUNDARY
- - - URBAN COMPACT BOUNDARY
- WATER BODIES**
- ☁ OPEN WATER
- ☁ SWAMP
- STREAM OR BROOK
- BRIDGE OR CULVERT**
- || BRIDGE OR CULVERT GREATER THAN 20'
- || BRIDGE OR CULVERT 6' - 20'

B34 STATE BRIDGE IDENTIFIER
B34 TOWN BRIDGE IDENTIFIER

IRTH

BETHEL, WINDSOR COUNTY - 2007

496,000



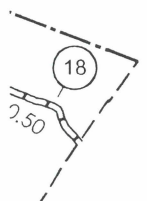
156,000

BETHEL
INSET 2

SCALE 1:12672



2,000



Bethel, Vermont
said Town,
and remove from
that position
to the White River
change the limit
the South-west
River Bridge
G. B. Graham,
S. M. Greene,
S. M. Washburn
J. H. Walds,
M. A. Moody,
A. A. Brooks,
A. L. Stearns

Bridge Street

N. V. Hartwell, Agnes P. Hartwell, J. M. Washburn,
A. L. Stearns, A. A. Brooks, W. H. Creamer,
P. M. O'Connor, Jon, - FOR your records

Henry W. Dan
C. H. Rood,
Guy Wilson
Wm. Allen
Paul Gay,
J. Y. Sargent,
H. M. Barron
S. C. Dunham
D. T. Dyer
Moses Ch
Ed. Kittredg
W. C. Pres

Town of Bethel
TH # 108
"Bridge Street"

Harry P.

May 31st,
in the fore

June 22nd
to lay on
Storment
said Stor
the Town
Could m
said St
and the

July 1st 1893, all parties interested met and the
Survey made (which is appended) and the
Appraisers appraised the damage to said Storment
at \$200 which was paid the same day

Bethel July 1st 1893.

W. Lattimer,
J. Y. Foyler,
W. C. Conner, } Selectmen

Survey

Commencing on highway at the eastern gate post
that Storment Sods. Easterly from the southerly corner
(upper portion) of the abutment of White River Bridge
(Crested End) thence - S. 29° E. 26 Poles - thence

the limits of
deal for in
lectmen.
15. 1893. Recd.
and
from Clerk.
mont.
in Town of
selection
ed a road
highway in
the location
of said location
opposite the
Hartwell
1893.

Bridge Street

Bethel, Vermont
 said Town,
 and remove from
 their position
 by the White River
 change the limit
 the southerly
 River Bridge
 G. G. Graham,
 S. M. Greene,
 S. M. Washburn
 J. H. Walds,
 M. A. Moody,
 A. A. Brooks,
 A. L. Stearns

W. V. Hartwell,	Agnes P. Hartwell,	J. M. Washburn.
A. L. Stearns,	A. A. Brooks,	W. H. Creamer.
P. M. O'Connell,	R. W. Morse,	Wm. Wright,
Henry W. Davis,	W. W. Reed,	J. D. Wheeler
C. H. Rood,	Allen E. Ingell,	G. M. Miller
Guy Wilson,	E. E. Wallace,	A. M. Marsh
Chas. Allen,	G. E. Graham,	M. G. Safford,
Paul Gay,	J. L. Martin,	P. P. Myron,
J. H. Sargent,	C. F. Haisington,	W. P. Sharr,
A. M. Barrett,	W. A. Dunham,	Geo. H. Kimball
S. C. Dunham,	Wm. H. Gilmore,	S. C. Dunham,
D. T. Dykes,	Amos Leviatt,	Wm. Brooks,
Moses Chas.	M. M. Kendall,	G. H. Emery,
Ed. Kittredge,	J. W. Hebbard,	Ansel Burbank,
W. C. Preston,	L. W. Clough	Robt. Noble.

May 31st 1893. We met on the ground called for in the foregoing petition and adjourned to June 22

June 22nd met as per adjournment and decided to lay out a highway between the house of Edwin Sturtevant and the River, and agreed with said Sturtevant that he should select or name and the Town another to assess the damage and if they could not agree to select a third. Said Sturtevant selected Mr. M. Whipple of Royalton and the Selectmen, W. B. Vial of Randolph.

July 1st 1893, all parties interested met and the survey made (which is appended) and the appraisers appraised the damage to said Sturtevant at \$200 which was paid the same day

Bethel July 1st 1893.

W. Lattimer,
 J. H. Fonger,
 W. B. Vial,
 Selectmen

Survey

Commencing on highway at the westerly gate post that stands 3 rods westerly from the southerly corner (upper portion) of the abutment of White River Bridge (westerly end) thence - S. 29° E. 26 Rods - thence

the limits of
 deal for in
 Selectmen.
 15. 1893. Recd.
 said
 Town Clerk.
 went,
 a Town of
 selectmen
 ed a road
 highway in
 the location
 of said location
 opposite the
 Hartwell
 1893.

So. 25° E. 6 rods. - thence So. 28° E. 10 rods. 9 lks. - thence So. 22° E.
10 rods. 11 lks. - thence So. 52° E. 6 rods. 20 lks. to land of N. W. Hartwell
meadow. - thence So. 38° E. 16 rods. 12 lks. to a point directly
opposite the So. Eastern Corner of New House dwelling
erected by N. W. Hartwell. The above to be the
Eastern side of road, and the Road to be 3 rods wide.

Wm Adams Surveyor.
Bethel Town Clerk's Office July 1st 1893. Recd for Record
at 4 A.M. and Recorded.
Attest Wm Adams. Town Clerk.

State of Vermont.
Supt. of Fisheries & Game
John W. Titcomb, Rutland. } Fish and Game Comm.
Chas. C. Warren, Waterbury. }

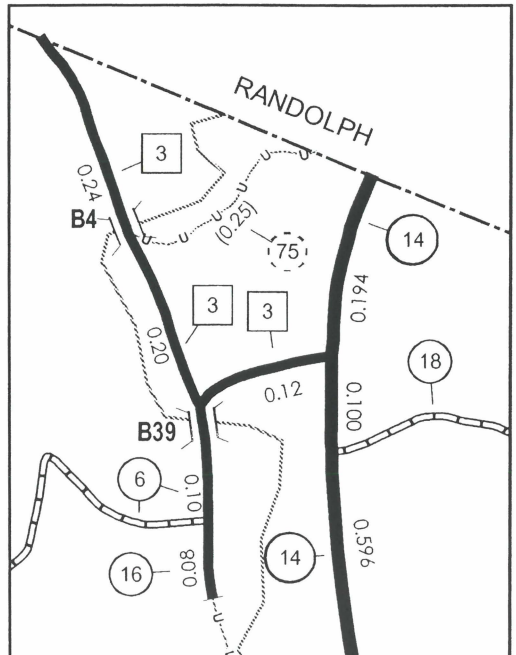
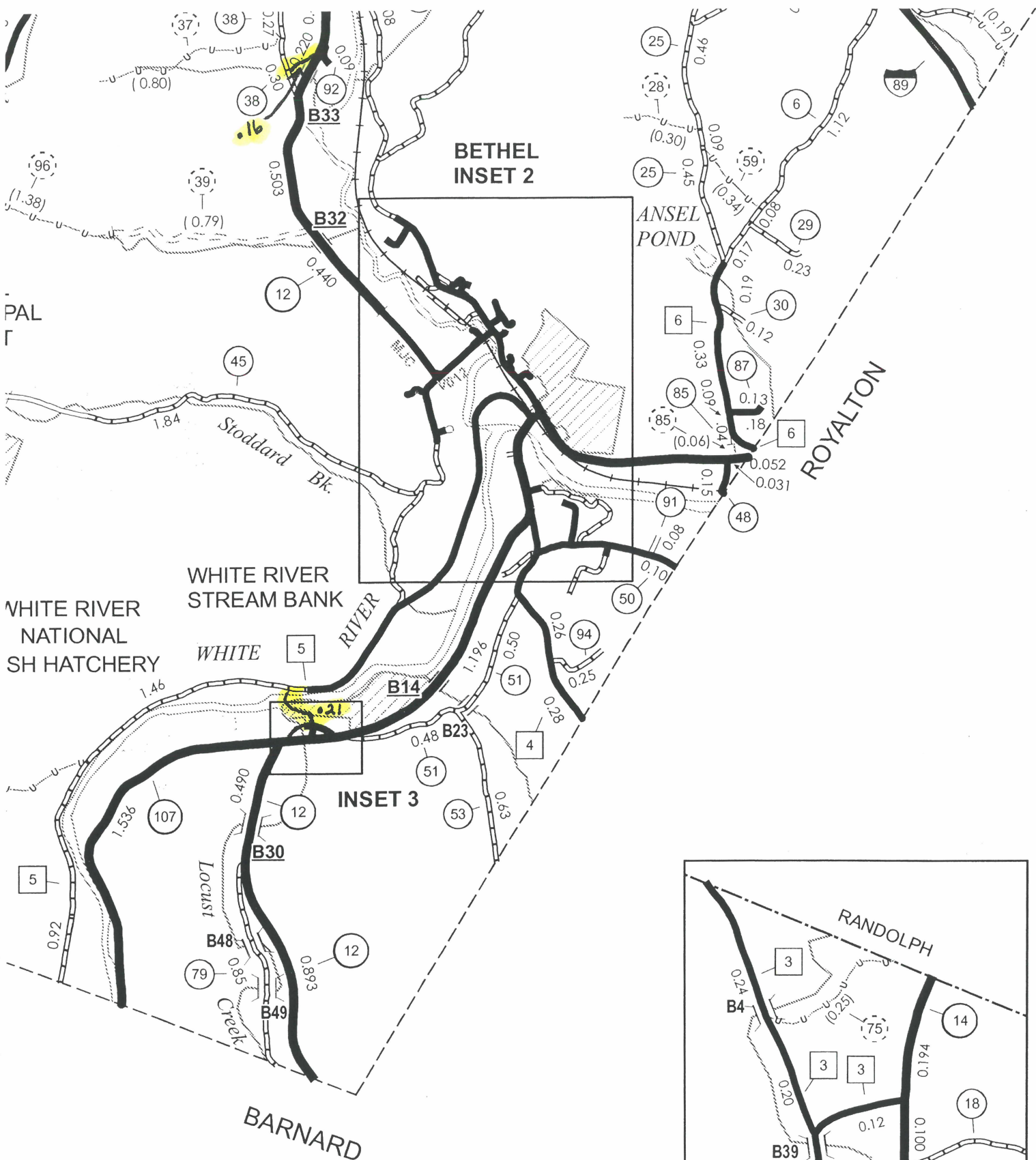
Know all men by these Presents,
That we John W. Titcomb and Chas. C. Warren,
Fish and Game Commissioners of the State of Vermont
do, by virtue of the authority vested in us by the
Legislature of said State, hereby constitute and appoint
Mr. C. Savage resident in the Town of Bethel
in the County of Windham a Fish and Game
Warden, within and for the State of Vermont
to hold office for the period ending on the first
Tuesday of March next, unless before that time
removed.

Fail not but duly observe and perform
the duties of said office according to law.

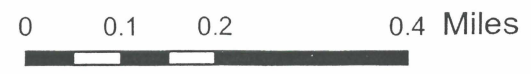
Dated this 11th day of March, 1893

John W. Titcomb } Fish and Game
Chas. C. Warren } Commissioners.
Bethel Town Clerk's Office March 16, 1893. Recd,
and Recorded.

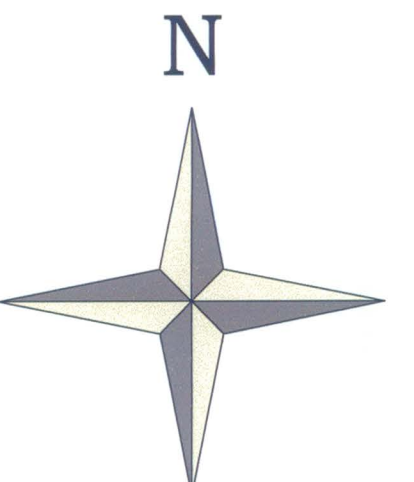
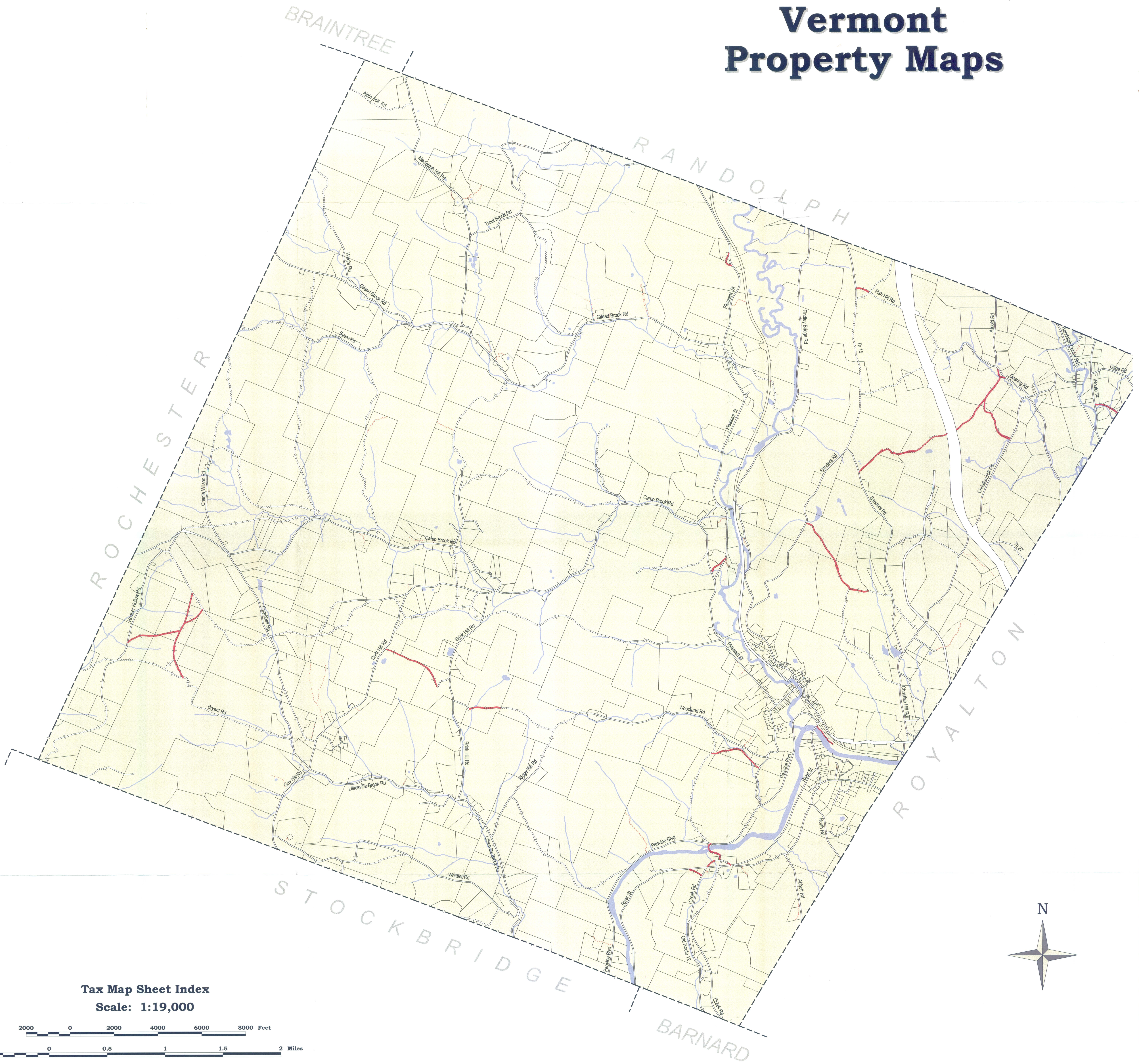
Attest Wm Adams
Town Clerk.



EAST BETHEL INSET 1 SCALE 1:12672



Town of Bethel, Vermont Property Maps



Tax Map Sheet Index
Scale: 1:19,000



Information Current To:
January 1, 2005