

CERTIFICATE OF HIGHWAY MILEAGE
YEAR ENDING FEBRUARY 10, 2010

Fill out form, make and file copy with the Town Clerk, and mail ORIGINAL, before February 20, 2010 to:
Vermont Agency of Transportation, Division of Planning, Outreach and Community Affairs, One National Life
Drive, Montpelier, VT 05633.

We, the members of the legislative body of ANDOVER in WINDSOR County
on an oath state that the mileage of highways, according to Vermont Statutes Annotated, Title 19, Section 305,
added 1985, is as follows:

PART I - CHANGES TOTALS - Please fill in and calculate totals.

Town Highways	Previous Mileage	Added Mileage	Subtracted Mileage	Total	Scenic Highways
Class 1	0.000				0.000
Class 1 Lane	0.000				
Class 2	9.930			9.930	0.000
Class 3	30.20	.09	.27	30.02	0.000
State Highway	3.886			3.886	0.000
Class 4	4.41	13.10 18.29	0.69 .42	20.82 22.28	0.000
Legal Trail	1.52			1.52	
Total	44.016			44.106	0.000

* Mileage for Class 1 Lane, Class 4, and Legal Trail classifications is NOT included in total.

PART II - INFORMATION AND DESCRIPTION OF CHANGES SHOWN ABOVE. 5/14/2010
5/12/10

- NEW HIGHWAYS: Please attach Selectmen's "Certificate of Completion and Opening".
- DISCONTINUED: Please attach SIGNED copy of proceedings (minutes of meeting).
Please see attached.
- RECLASSIFIED/REMEASURED: Please attach SIGNED copy of proceedings (minutes of meeting).
Please see attached.
- SCENIC HIGHWAYS: Please attach a copy of order designating/discontinuing Scenic Highways.

COPY OF MARCH 23 CERT

IF THERE ARE NO CHANGES IN MILEAGE: Check box and sign below. []

PART III - SIGNATURES - PLEASE SIGN.

Selectmen/ Aldermen/ Trustees Signatures:

Ned Johnson
Paul Shroy
M. van den Berg
Sherry Wilbur

T/C/V Clerk Signature:

Maude J. Bayfield

Date Filed: Feb. 8, 2010

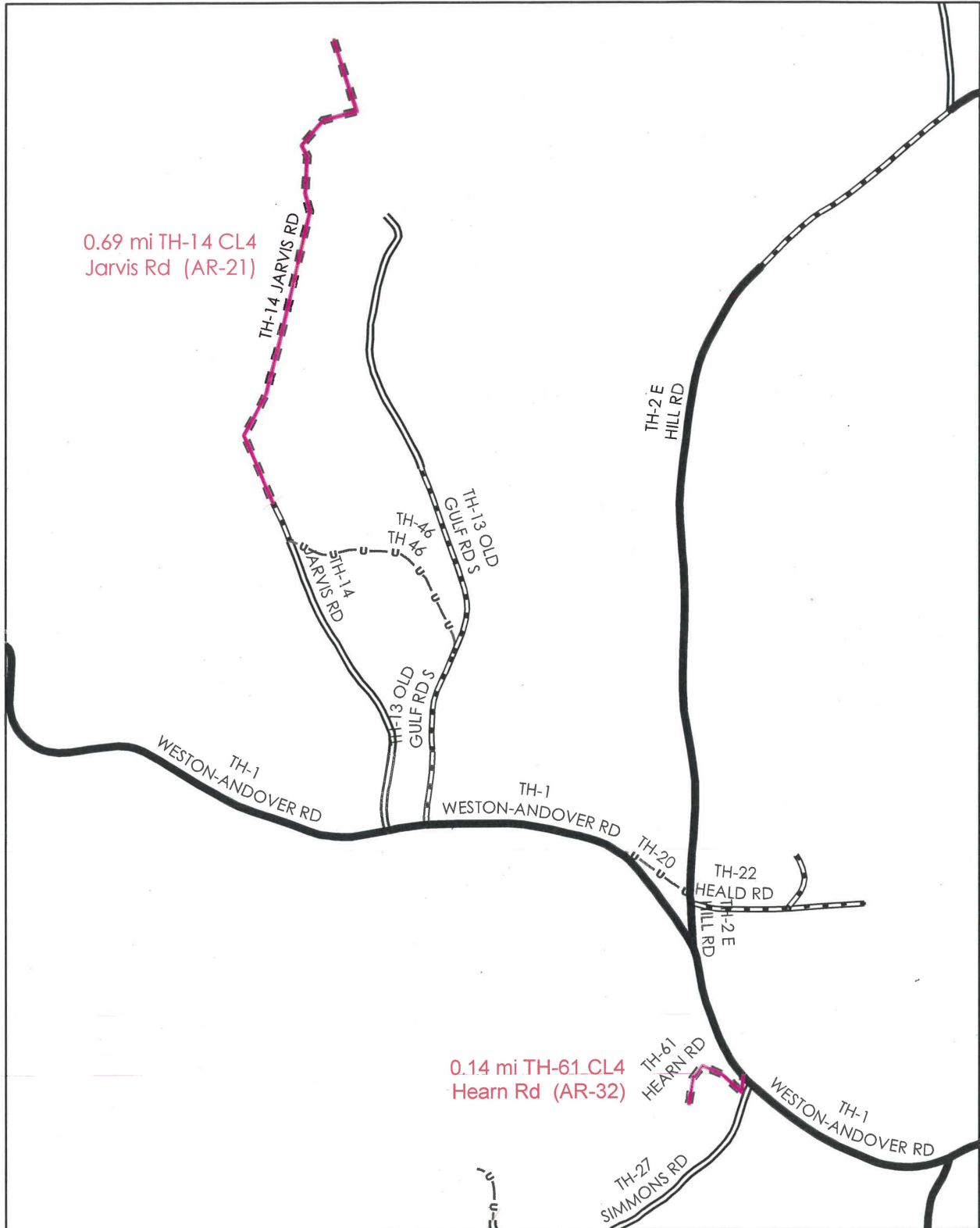
Please sign ORIGINAL and return it for Transportation signature.

AGENCY OF TRANSPORTATION APPROVAL: Signed copy will be returned to T/C/V Clerk.

APPROVED:

Representative, Agency of Transportation

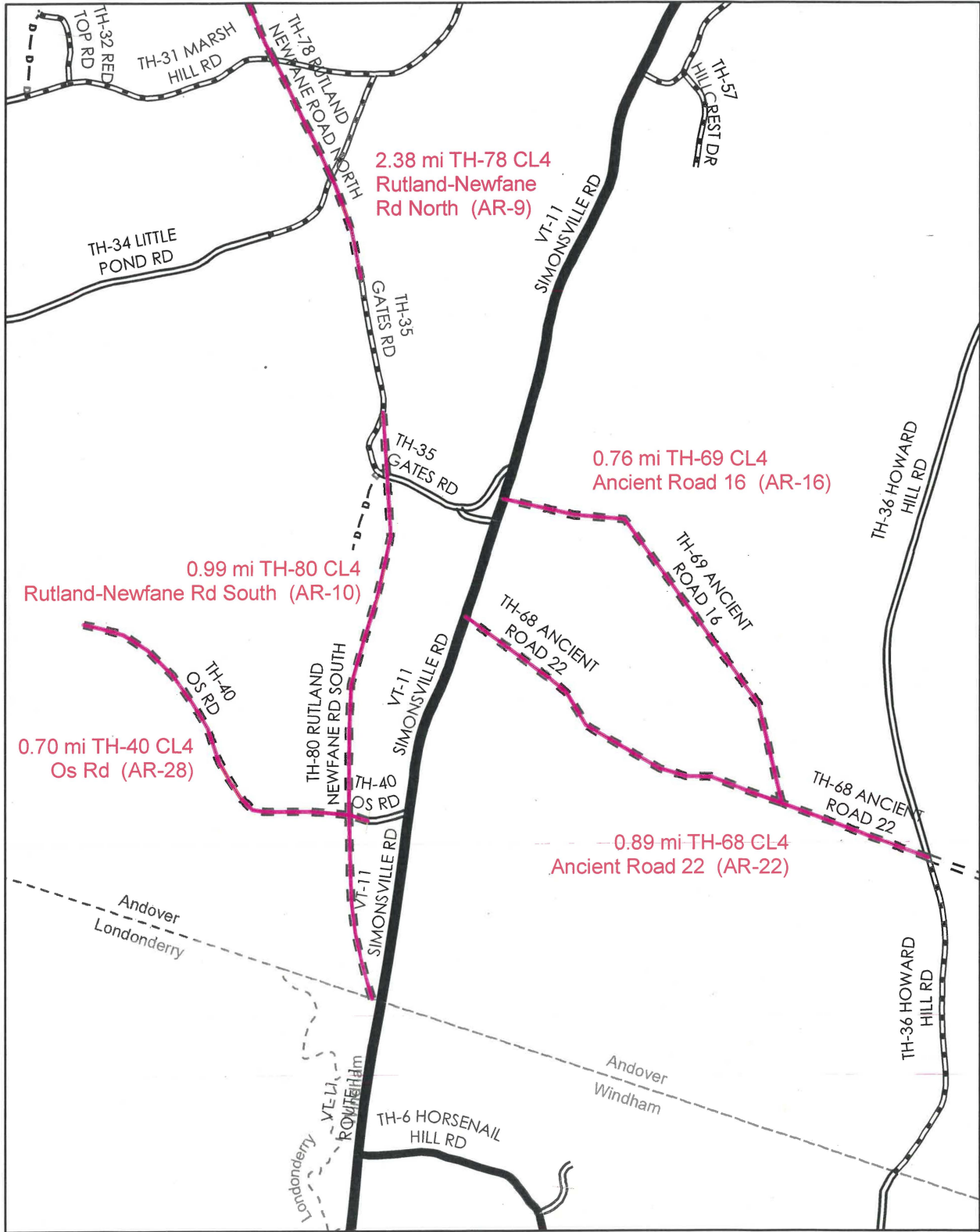
DATE: 5/19/2010



**Mileage Certificate Change 2010
ANDOVER**

Mapping Unit
 Division of Planning, Outreach and Community Affairs
 Vermont Agency of Transportation -- May 2010

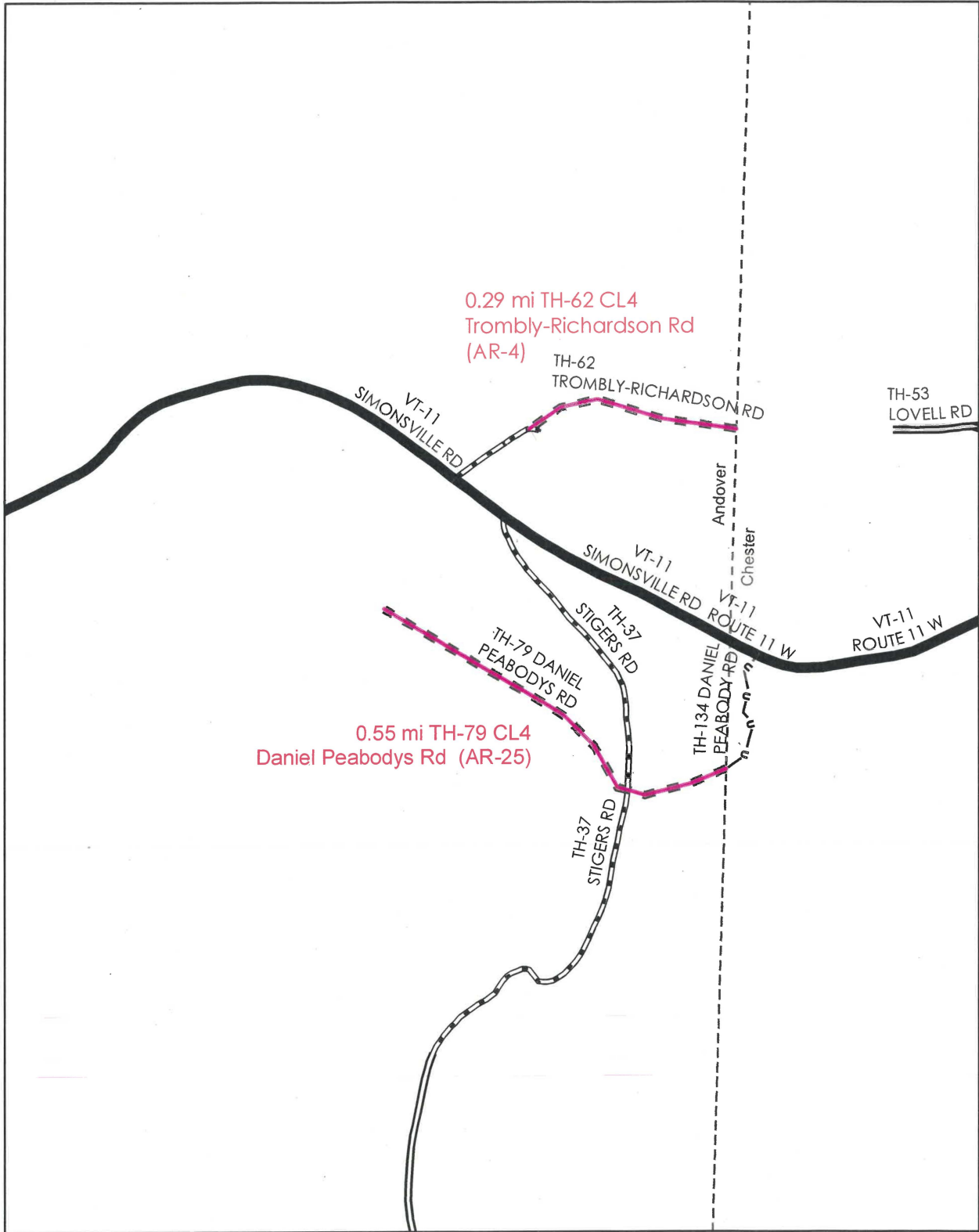




**Mileage Certificate Change 2010
ANDOVER**

Mapping Unit
 Division of Planning, Outreach and Community Affairs
 Vermont Agency of Transportation -- May 2010

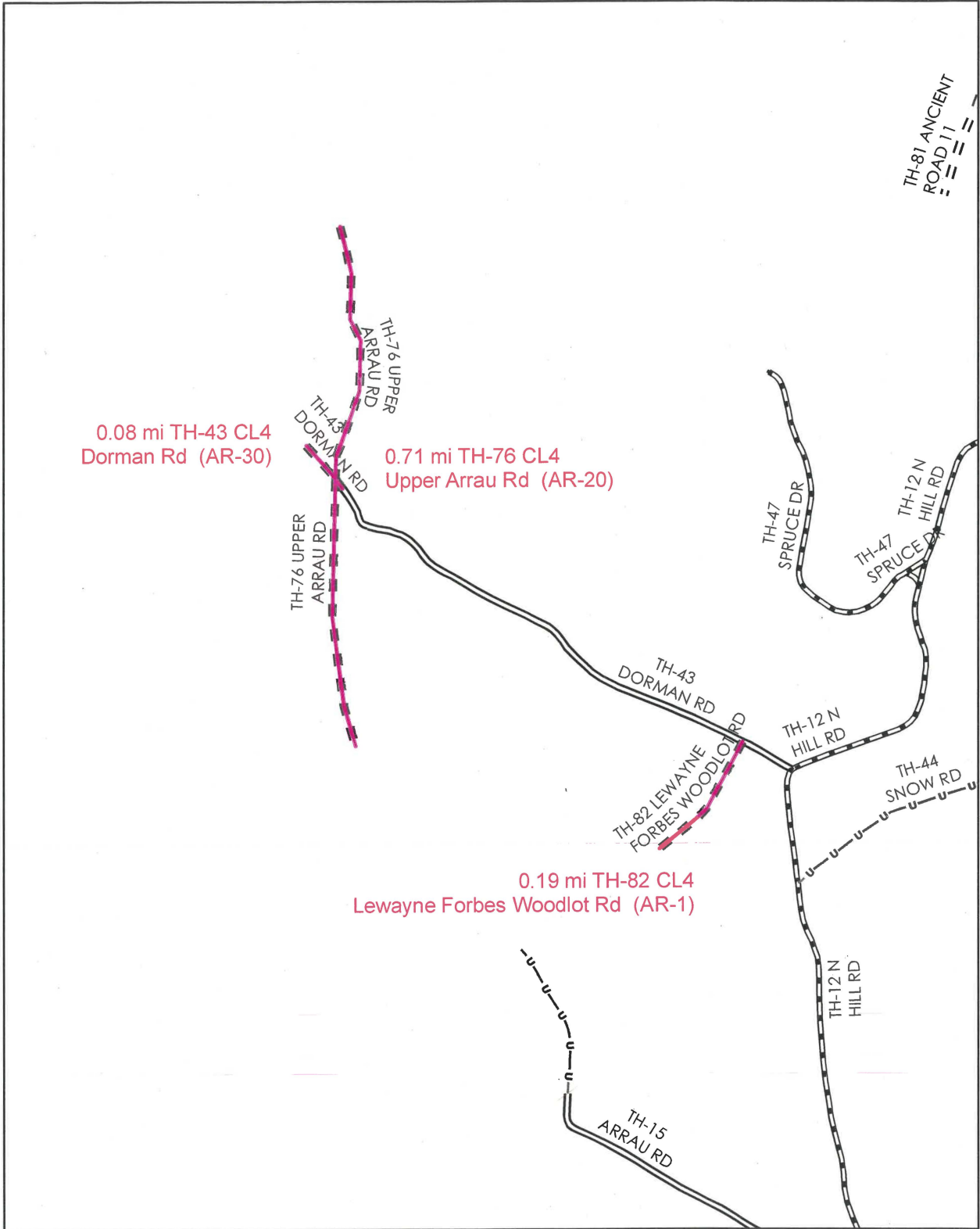




**Mileage Certificate Change 2010
ANDOVER**

Mapping Unit
 Division of Planning, Outreach and Community Affairs
 Vermont Agency of Transportation -- May 2010

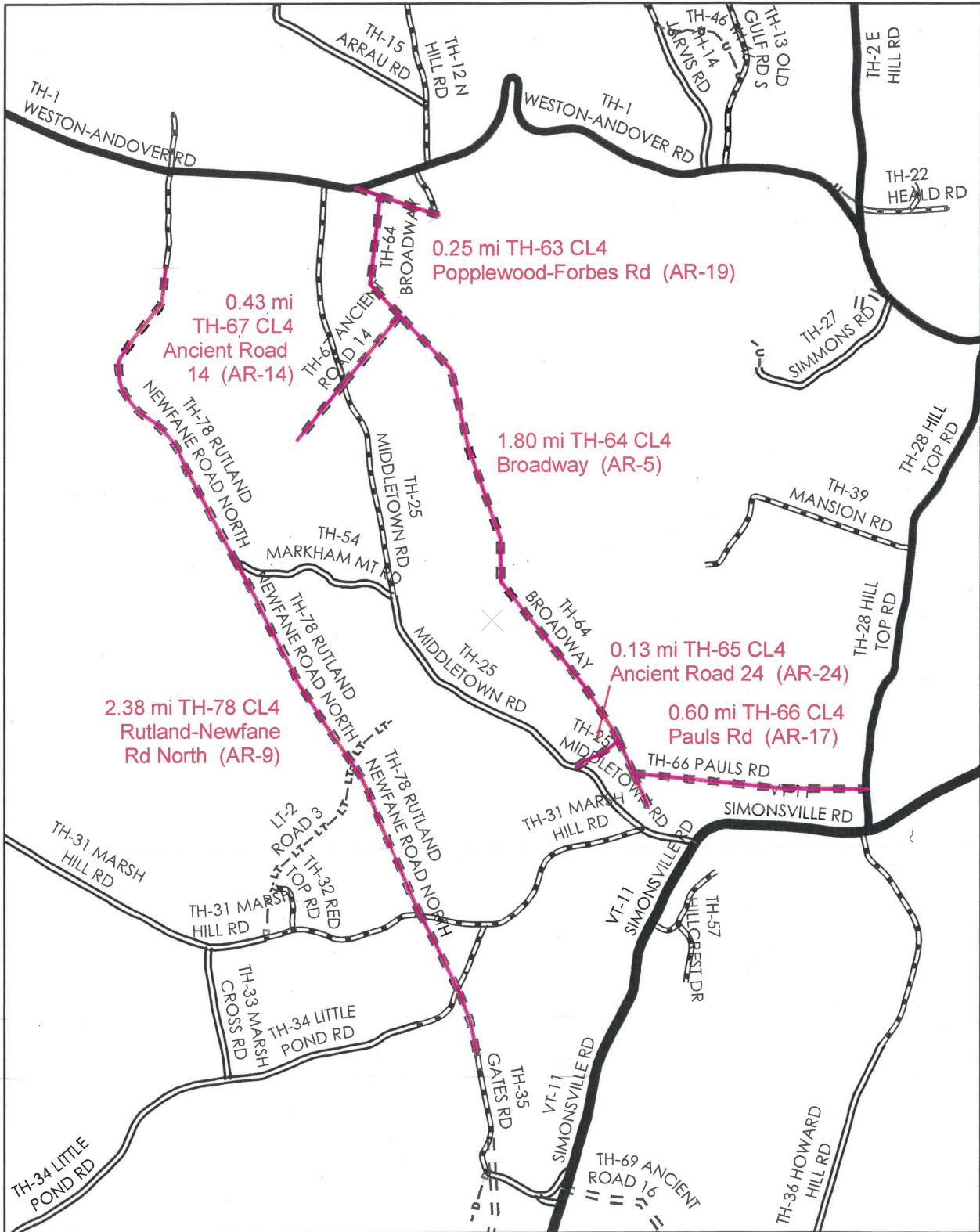




**Mileage Certificate Change 2010
ANDOVER**

Mapping Unit
 Division of Planning, Outreach and Community Affairs
 Vermont Agency of Transportation -- May 2010

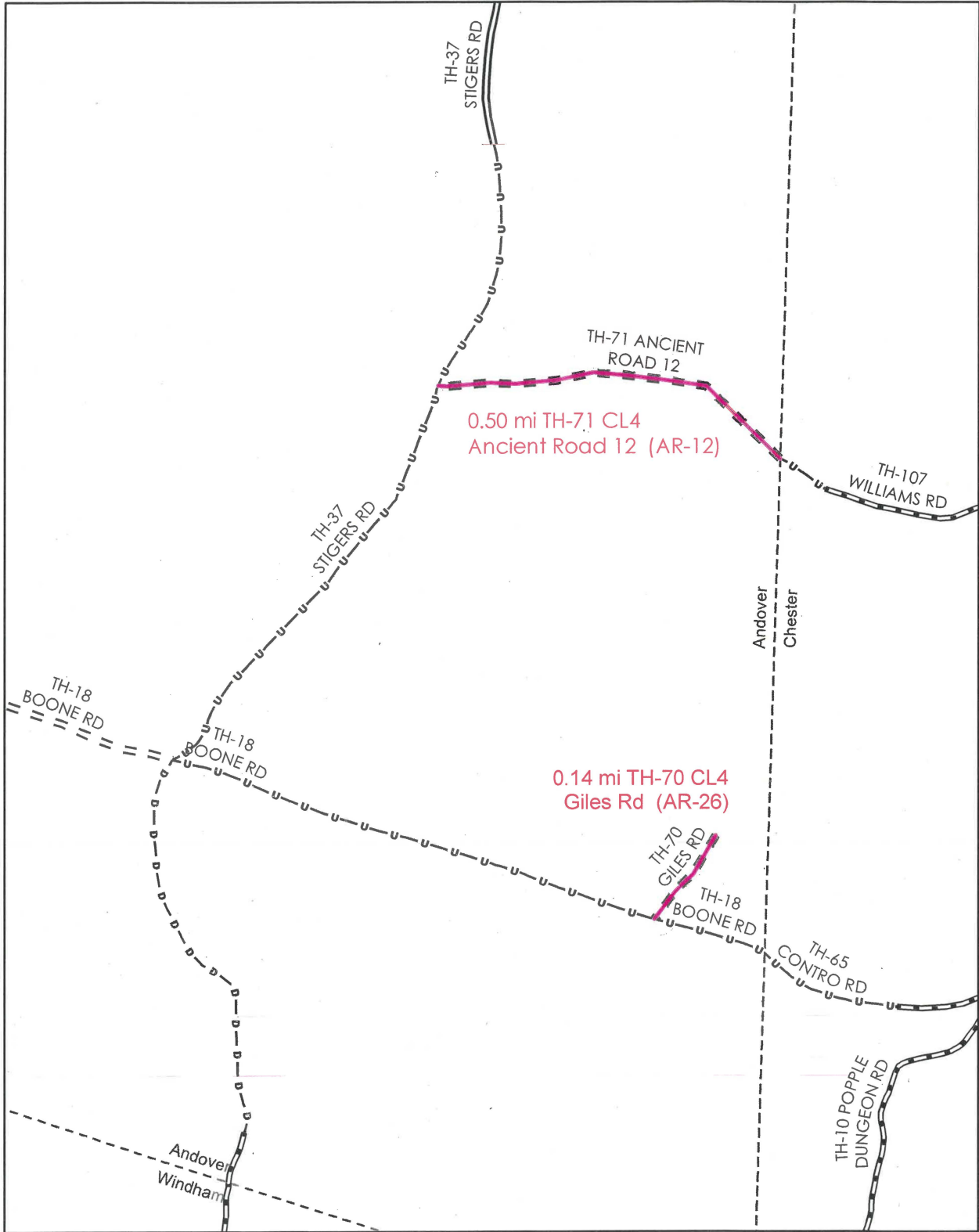




**Mileage Certificate Change 2010
ANDOVER**

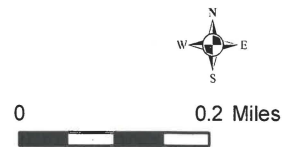
Mapping Unit
 Division of Planning, Outreach and Community Affairs
 Vermont Agency of Transportation -- May 2010

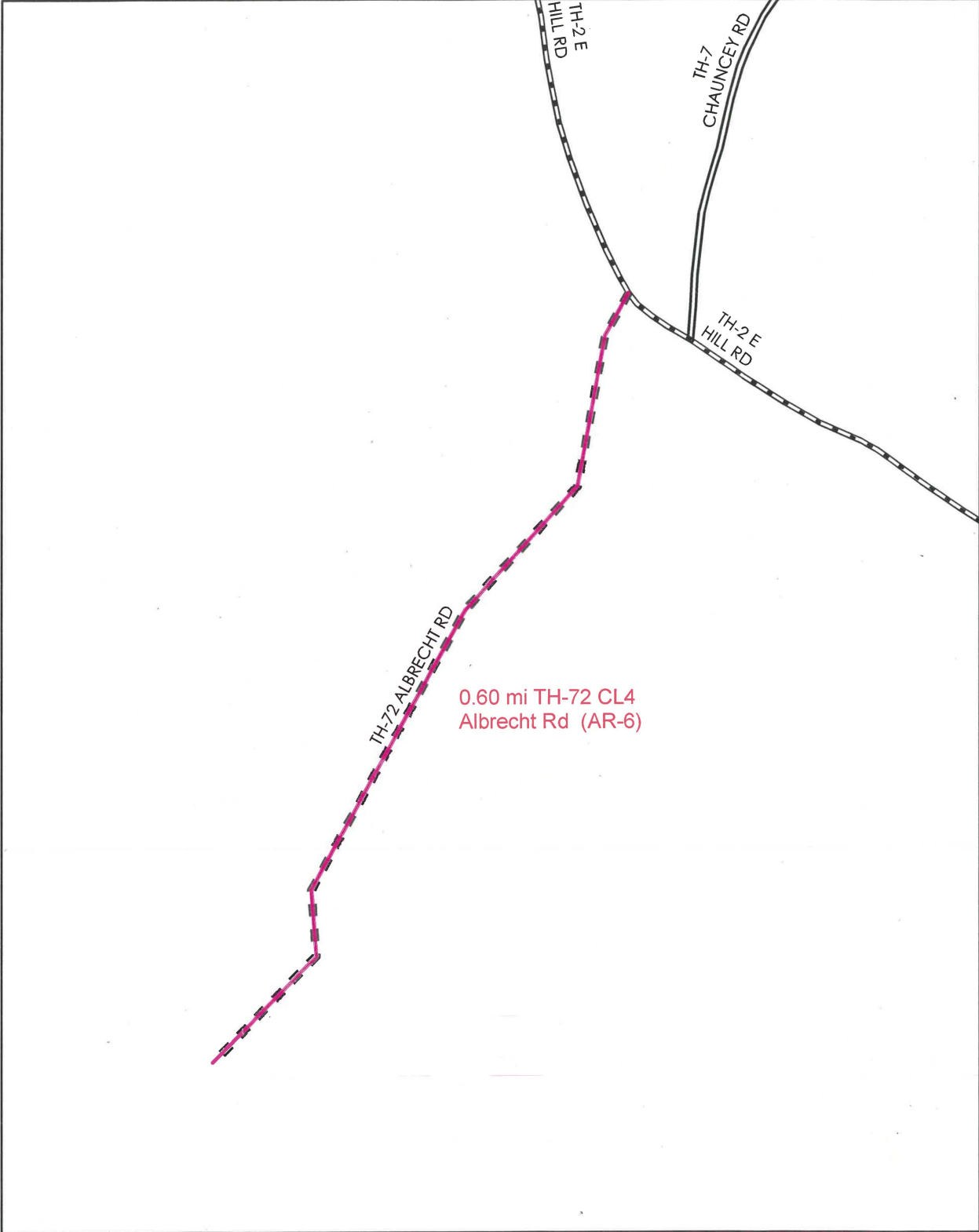




**Mileage Certificate Change 2010
ANDOVER**

Mapping Unit
 Division of Planning, Outreach and Community Affairs
 Vermont Agency of Transportation – May 2010

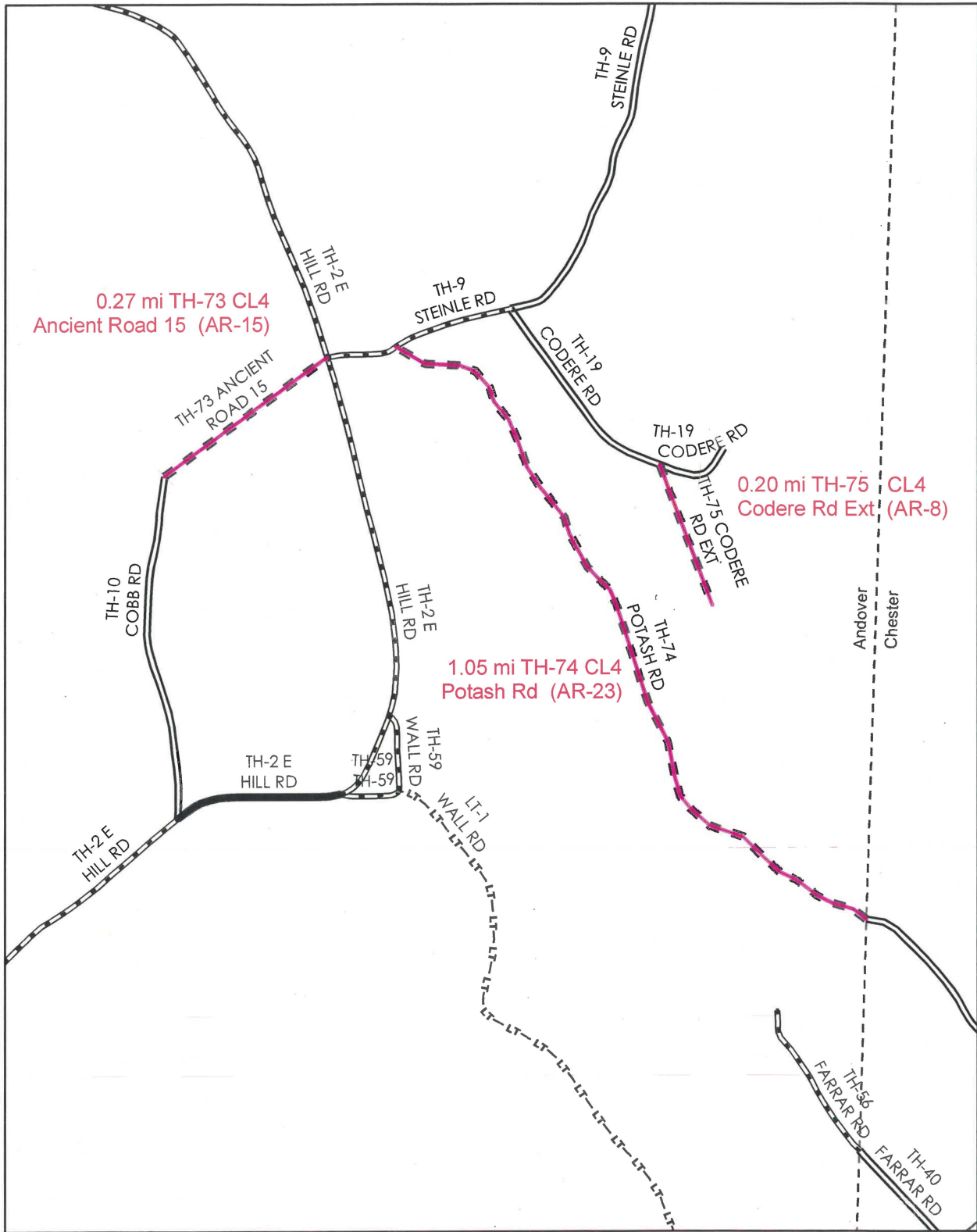




**Mileage Certificate Change 2010
ANDOVER**

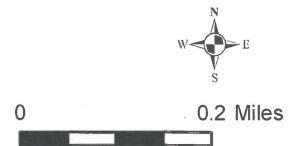
Mapping Unit
Division of Planning, Outreach and Community Affairs
Vermont Agency of Transportation -- May 2010

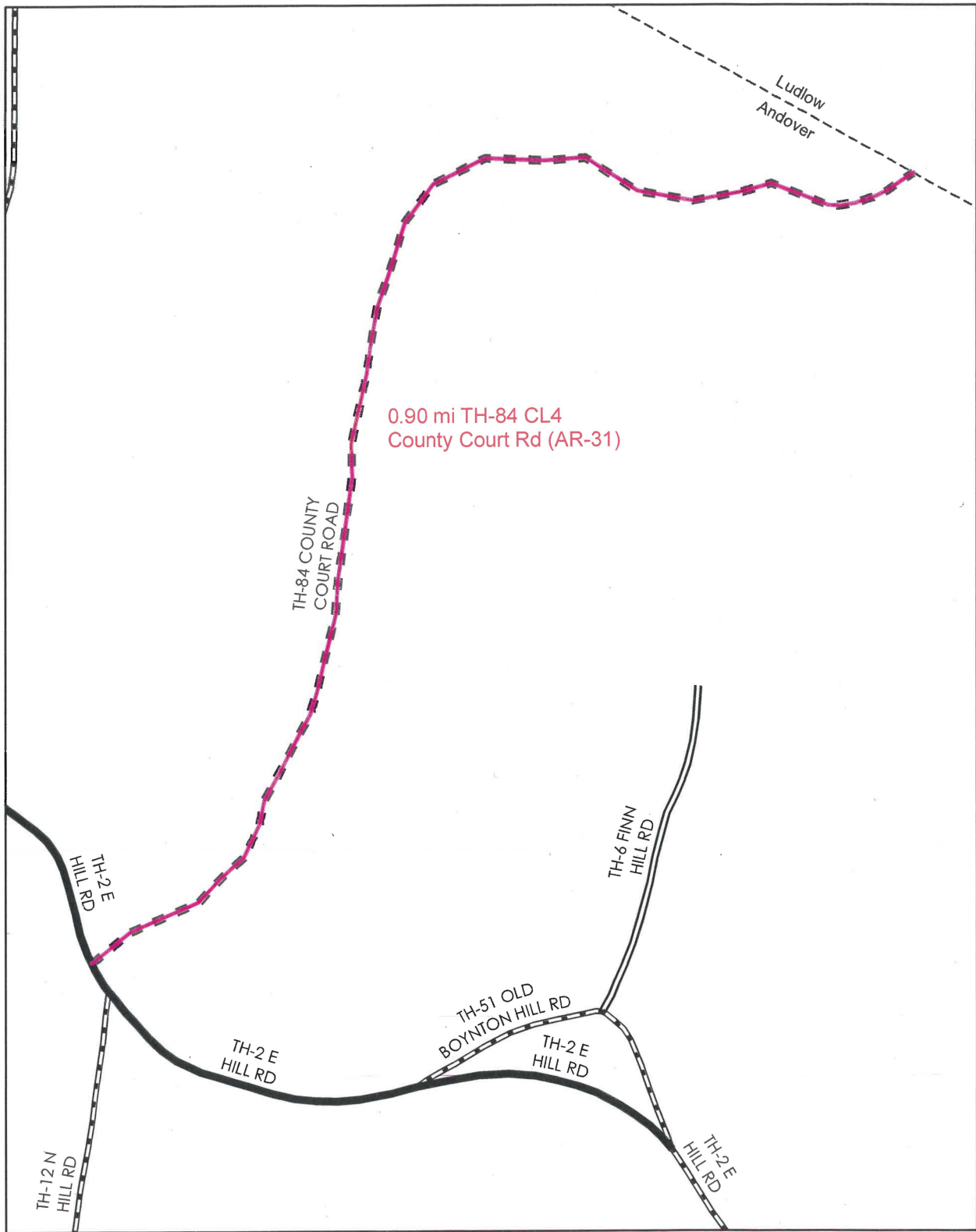




**Mileage Certificate Change 2010
ANDOVER**

Mapping Unit
Division of Planning, Outreach and Community Affairs
Vermont Agency of Transportation -- May 2010



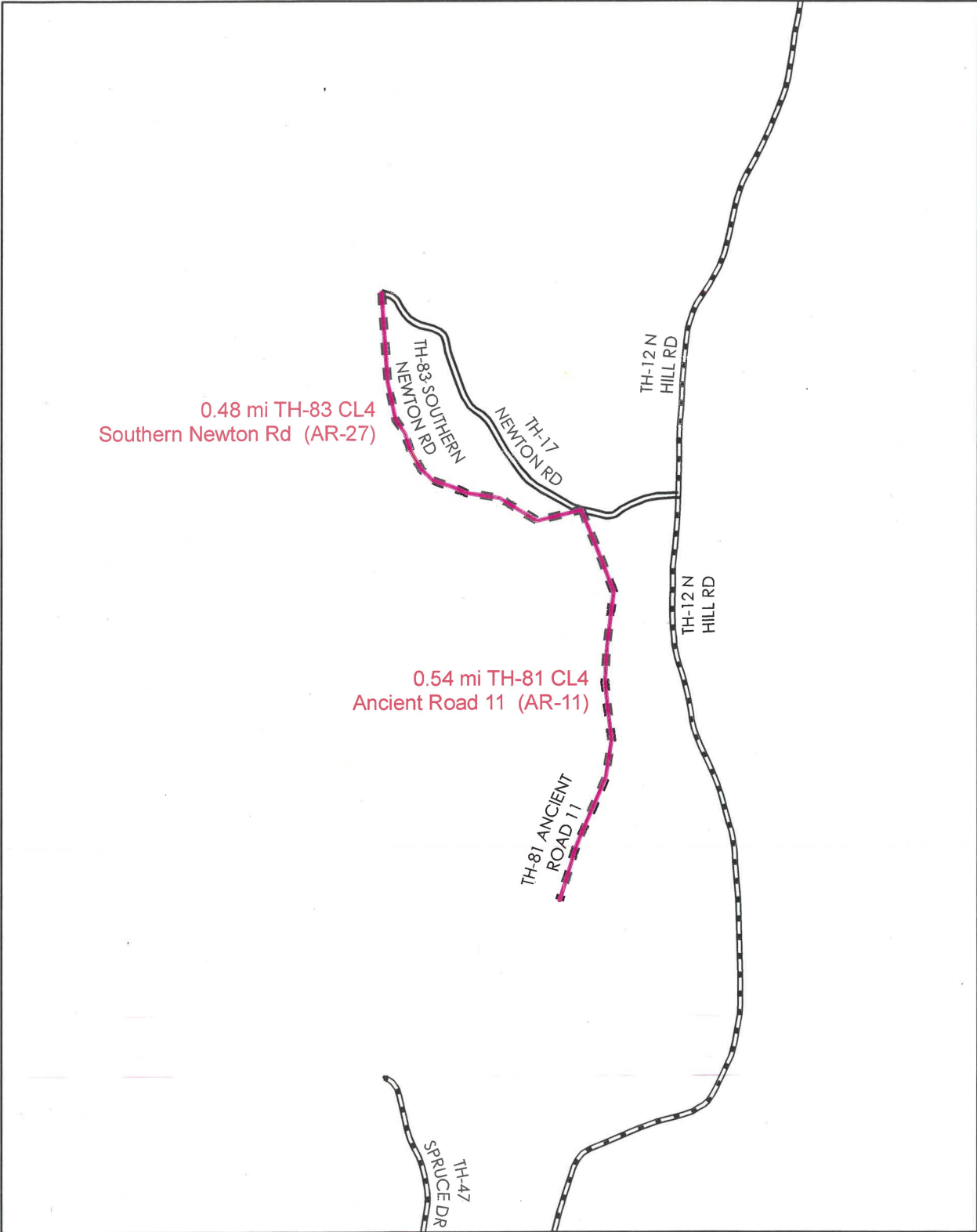


0.90 mi TH-84 CL4
County Court Rd (AR-31)

**Mileage Certificate Change 2010
ANDOVER**

Mapping Unit
Division of Planning, Outreach and Community Affairs
Vermont Agency of Transportation -- May 2010





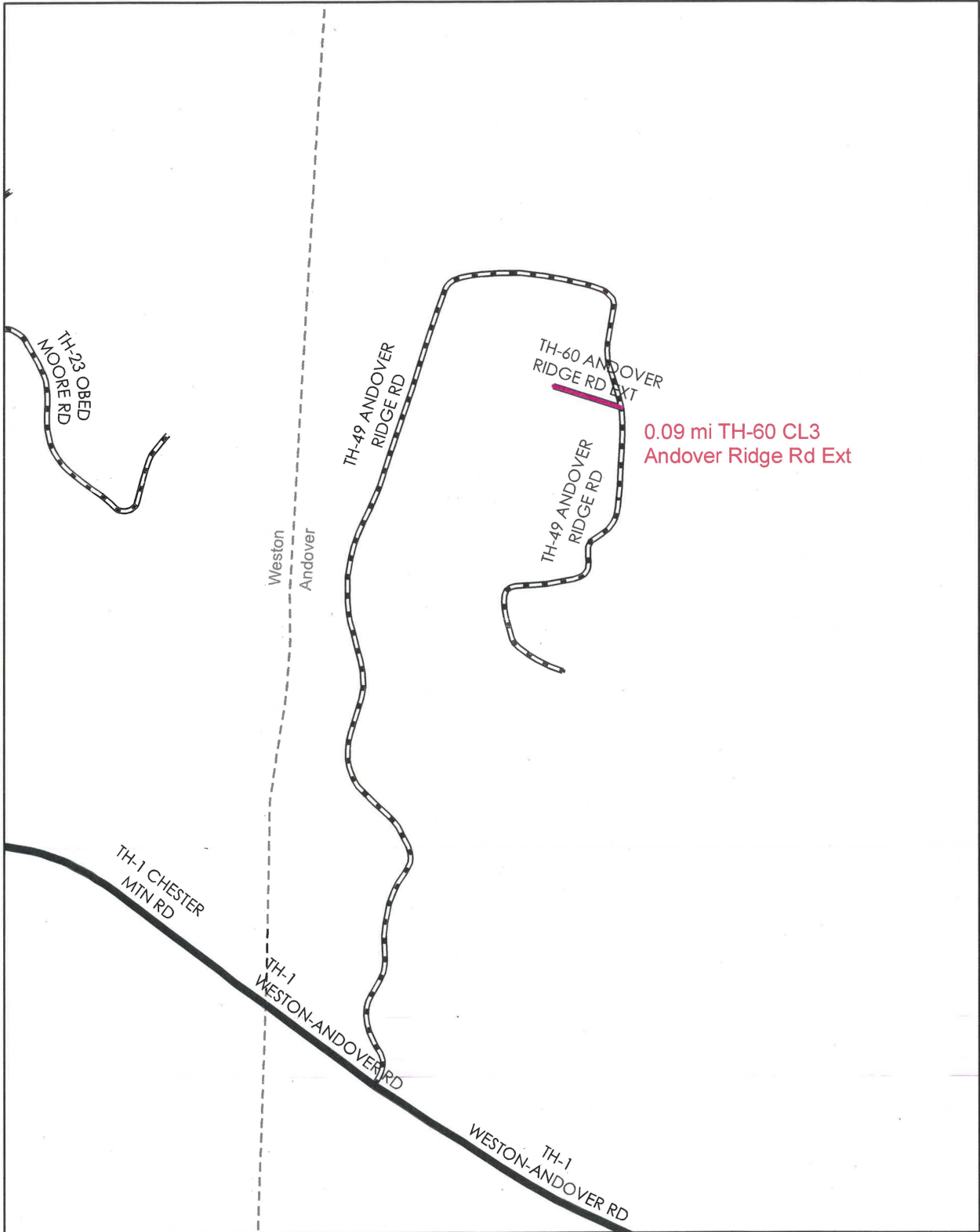
0.48 mi TH-83 CL4
Southern Newton Rd (AR-27)

0.54 mi TH-81 CL4
Ancient Road 11 (AR-11)

**Mileage Certificate Change 2010
ANDOVER**

Mapping Unit
Division of Planning, Outreach and Community Affairs
Vermont Agency of Transportation -- May 2010

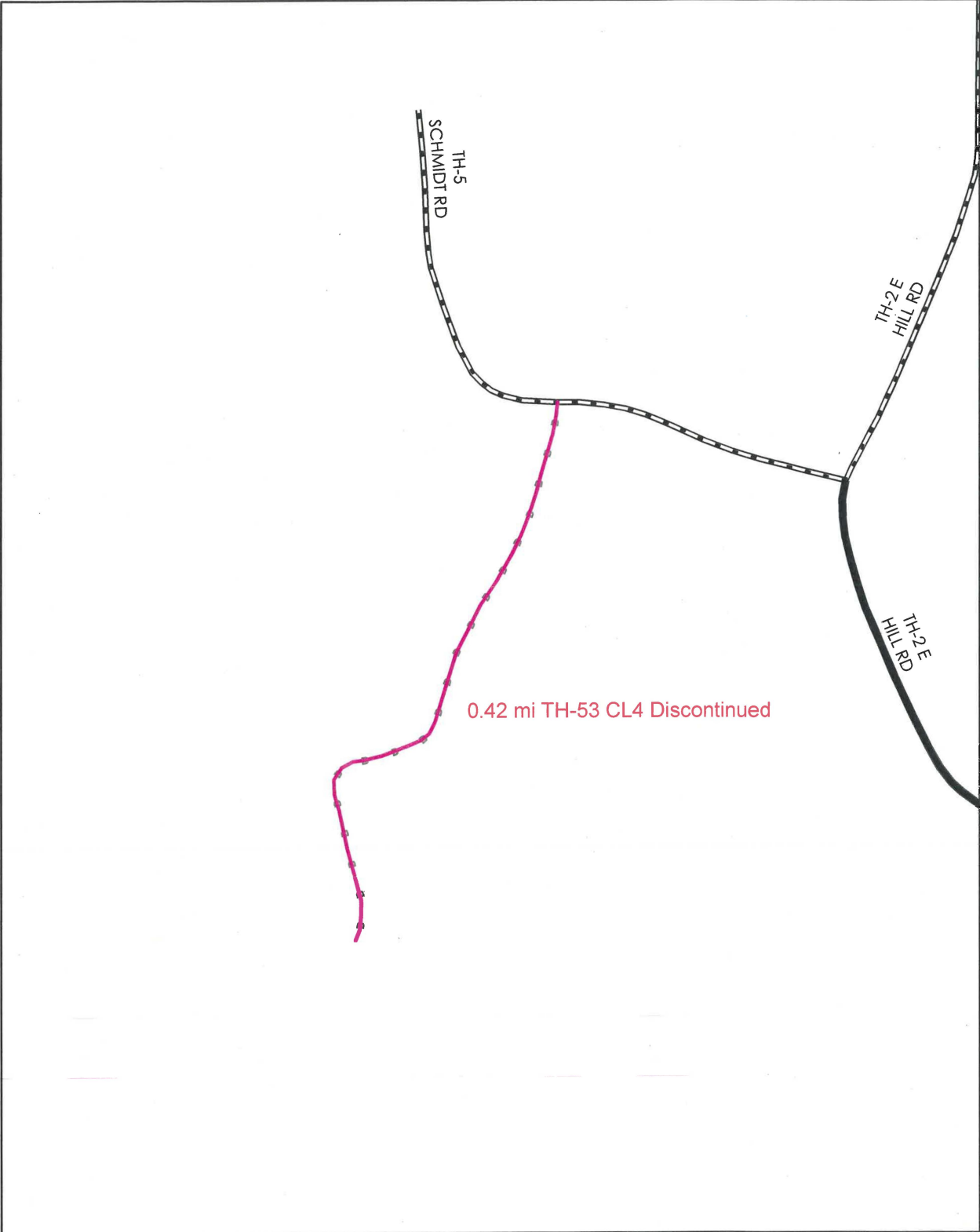




**Mileage Certificate Change 2010
ANDOVER**

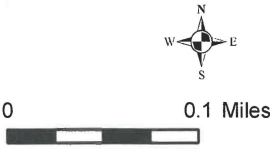
Mapping Unit
 Division of Planning, Outreach and Community Affairs
 Vermont Agency of Transportation -- May 2010

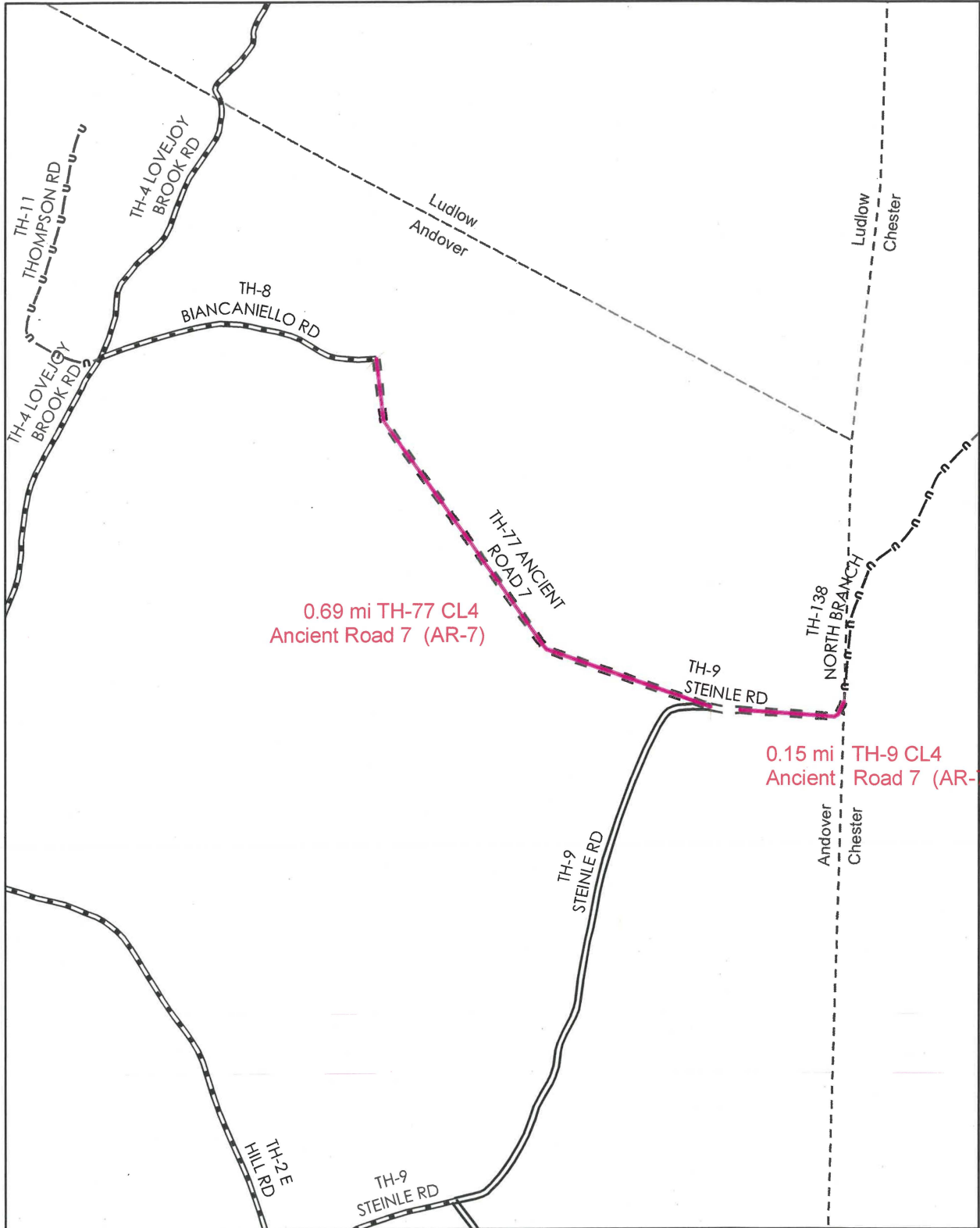




**Mileage Certificate Change 2010
ANDOVER**

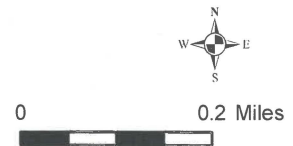
Mapping Unit
Division of Planning, Outreach and Community Affairs
Vermont Agency of Transportation -- May 2010

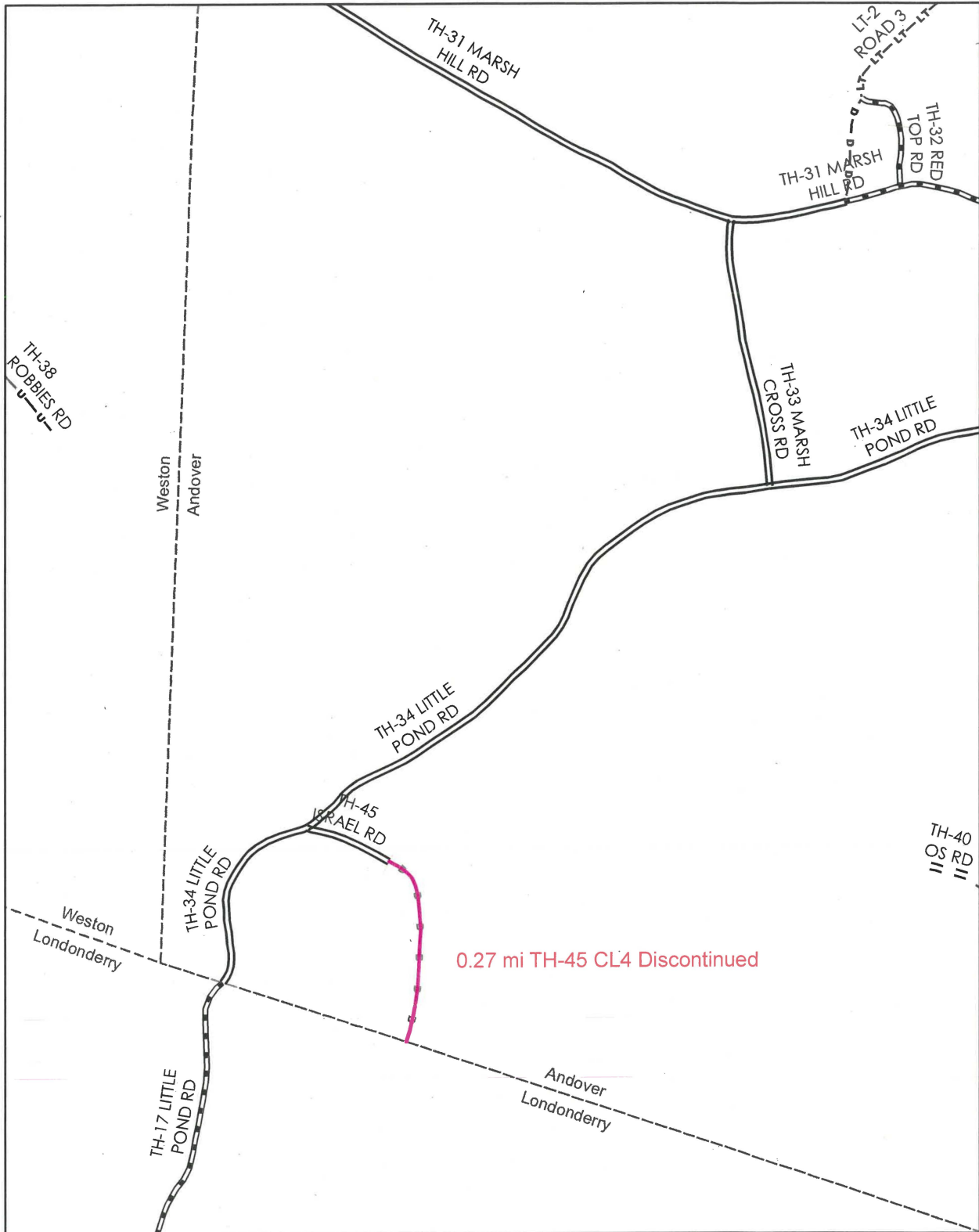




**Mileage Certificate Change 2010
ANDOVER**

Mapping Unit
 Division of Planning, Outreach and Community Affairs
 Vermont Agency of Transportation -- May 2010





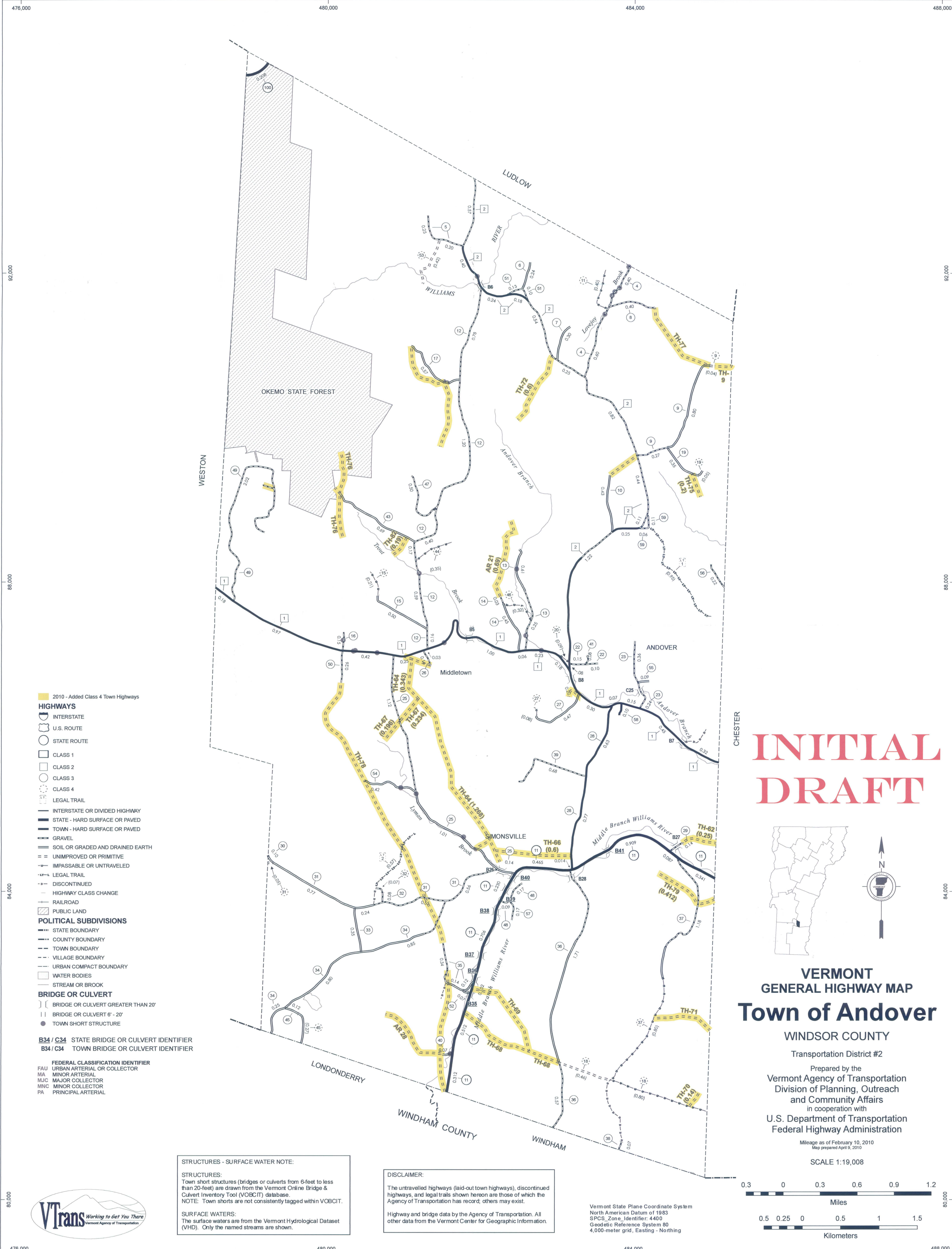
**Mileage Certificate Change 2010
ANDOVER**

Mapping Unit
 Division of Planning, Outreach and Community Affairs
 Vermont Agency of Transportation -- May 2010



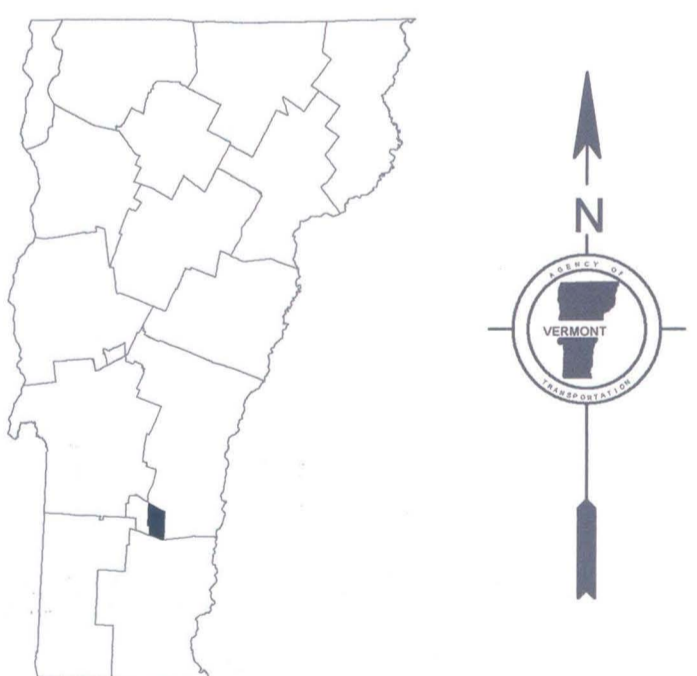
Supplemental information related to this certificate
is stored in a separate storage box labeled

"Certificate of Highway Mileage
Supplemental Documentation"



- 2010 - Added Class 4 Town Highways
- HIGHWAYS**
- INTERSTATE
- U.S. ROUTE
- STATE ROUTE
- CLASS 1
- CLASS 2
- CLASS 3
- CLASS 4
- LEGAL TRAIL
- INTERSTATE OR DIVIDED HIGHWAY
- STATE - HARD SURFACE OR PAVED
- TOWN - HARD SURFACE OR PAVED
- GRAVEL
- SOIL OR GRADED AND DRAINED EARTH
- UNIMPROVED OR PRIMITIVE
- IMPASSABLE OR UNTRAVELED
- LEGAL TRAIL
- DISCONTINUED
- HIGHWAY CLASS CHANGE
- RAILROAD
- PUBLIC LAND
- POLITICAL SUBDIVISIONS**
- STATE BOUNDARY
- COUNTY BOUNDARY
- TOWN BOUNDARY
- VILLAGE BOUNDARY
- URBAN COMPACT BOUNDARY
- WATER BODIES
- STREAM OR BROOK
- BRIDGE OR CULVERT**
- BRIDGE OR CULVERT GREATER THAN 20'
- BRIDGE OR CULVERT 6' - 20'
- TOWN SHORT STRUCTURE
- B34 / C34 STATE BRIDGE OR CULVERT IDENTIFIER**
- B34 / C34 TOWN BRIDGE OR CULVERT IDENTIFIER**
- FEDERAL CLASSIFICATION IDENTIFIER**
- FAU URBAN ARTERIAL OR COLLECTOR
- MA MINOR ARTERIAL
- MJC MAJOR COLLECTOR
- MNC MINOR COLLECTOR
- PA PRINCIPAL ARTERIAL

INITIAL
DRAFT



**VERMONT
GENERAL HIGHWAY MAP
Town of Andover**

WINDSOR COUNTY

Transportation District #2

Prepared by the
Vermont Agency of Transportation
Division of Planning, Outreach
and Community Affairs
in cooperation with
U.S. Department of Transportation
Federal Highway Administration

Mileage as of February 10, 2010
Map prepared April 9, 2010

SCALE 1:19,008



STRUCTURES - SURFACE WATER NOTE:

STRUCTURES:
Town short structures (bridges or culverts from 6-feet to less than 20-feet) are drawn from the Vermont Online Bridge & Culvert Inventory Tool (VOBCIT) database.
NOTE: Town shorts are not consistently tagged within VOBCIT.

SURFACE WATERS:
The surface waters are from the Vermont Hydrological Dataset (VHD). Only the named streams are shown.

DISCLAIMER:

The untraveled highways (laid-out town highways), discontinued highways, and legal trails shown hereon are those of which the Agency of Transportation has record; others may exist.

Highway and bridge data by the Agency of Transportation. All other data from the Vermont Center for Geographic Information.

Vermont State Plane Coordinate System
North American Datum of 1983
SPCS_Zone_Identifier: 4400
Geodetic Reference System 80
4,000-meter grid, Easting - Northing

