

CERTIFICATE OF HIGHWAY MILEAGE
YEAR ENDING FEBRUARY 10, 2009

Fill out form, make and file copy with the Town Clerk, and mail ORIGINAL, before February 20, 2009 to:
Vermont Agency of Transportation, Policy and Planning Division, One National Life Drive, Montpelier, VT 05633.

We, the members of the legislative body of VERNON in WINDHAM County

on an oath state that the mileage of highways, according to Vermont Statutes Annotated,
Title 19, Section 305, added 1985, is as follows:

PART I - CHANGES TOTALS - Please fill in and calculate totals.

Table with 6 columns: Town Highways, Previous Mileage, Added Mileage, Subtracted Mileage, Total, Scenic Highways. Rows include Class 1, Class 1 Lane, Class 2, Class 3, State Highway, Class 4, Legal Trail, and Total.

* Mileage for Class 1 Lane, Class 4, and Legal Trail classifications is NOT included in total.

PART II - INFORMATION AND DESCRIPTION OF CHANGES SHOWN ABOVE.

- 1. NEW HIGHWAYS: Please attach Selectmen's "Certificate of Completion and Opening".
2. DISCONTINUED: Please attach SIGNED copy of proceedings (minutes of meeting).
3. RECLASSIFIED/REMEASURED: Please attach SIGNED copy of proceedings (minutes of meeting).
4. SCENIC HIGHWAYS: Please attach a copy of order designating/discontinuing Scenic Highways.

IF THERE ARE NO CHANGES IN MILEAGE: Check box and sign below. [X]

PART III - SIGNATURES - PLEASE SIGN.

Selectmen/ Aldermen/ Trustees Signatures:

Handwritten signatures: Robert Miller, Christiane Howe, Annette P. Roydon

T/C/V Clerk Signature:

Handwritten signature of T/C/V Clerk

Date Filed:

Handwritten date: January 6, 2009

Please sign ORIGINAL and return it for Transportation signature.

AGENCY OF TRANSPORTATION APPROVAL: Signed copy will be returned to T/C/V Clerk.

APPROVED:

Handwritten signature of Representative, Agency of Transportation

DATE:

Handwritten date: 1/8/2009

TOWN LENGTH IN MILES
HWY. CLASS CLASS

NO.	3	4
4	1.25	
5	1.20	
6	0.81	
7	1.47	
8	0.18	
10	0.12	
11	1.63	
12	0.48	
13	0.76	
15	0.34	
16	0.35	
17	1.70	
18	0.76	
19	0.63	
20	0.20	
21	0.33	(0.24)
22	1.09	
23	0.17	
24	0.20	
25	0.14	
26	0.12	
27	0.10	
28	0.11	
29	0.33	
30	0.07	
31	0.07	
32	0.31	
33		(0.11)
34		(0.13)
35	0.15	
36	0.10	
37	0.15	
38	0.12	
39	0.36	
40	0.24	
41	0.52	
42	0.17	
44	0.14	
45	0.16	
46	0.16	
TOTAL	17.29	0.48

MILEAGE SUMMARY

CLASS 2	2.150
TH-1	1.25
TH-2	3.890
TH-3	1.820
TOTAL CLASS 2	7.860
CLASS 3	
TOTAL CLASS 3	17.290
TOTAL TOWN	25.150
STATE HIGHWAY	
VT-142	8.680
TOTAL STATE HIGHWAY	8.680
US HIGHWAY	
US-5	0.218
TOTAL US HIGHWAY	0.218
TOTAL STATE	8.898
INTERSTATE	
I-91	2.742
TOTAL INTERSTATE	2.742
TOTAL TRAVELED HIGHWAYS, FEB. 10, 2008:	36.790

(Excludes Class 4 and Legal Trail Mileage)

LEGAL TRAIL LENGTH IN MILES

NO.	1	(0.40)
	2	(0.63)
TOTAL		1.03

HIGHWAYS

- INTERSTATE
- U.S. ROUTE
- STATE ROUTE
- CLASS 1
- CLASS 2
- CLASS 3
- CLASS 4
- LEGAL TRAIL
- INTERSTATE OR DIVIDED HIGHWAY
- STATE - HARD SURFACE OR PAVED
- TOWN - HARD SURFACE OR PAVED
- GRAVEL
- SOIL OR GRADED AND DRAINED EARTH
- UNIMPROVED OR PRIMITIVE
- IMPASSABLE OR UNTRAVELED
- LEGAL TRAIL
- DISCONTINUED
- HIGHWAY CLASS CHANGE
- RAILROAD

- PUBLIC LAND
- POLITICAL SUBDIVISIONS
- STATE BOUNDARY
- COUNTY BOUNDARY
- TOWN BOUNDARY
- VILLAGE BOUNDARY
- URBAN COMPACT BOUNDARY
- OPEN WATER
- STREAM OR BROOK
- BRIDGE OR CULVERT
- BRIDGE OR CULVERT GREATER THAN 20'
- BRIDGE OR CULVERT 6' - 20'

B34/C34 STATE BRIDGE OR CULVERT IDENTIFIER
B34/C34 TOWN BRIDGE OR CULVERT IDENTIFIER

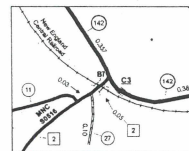
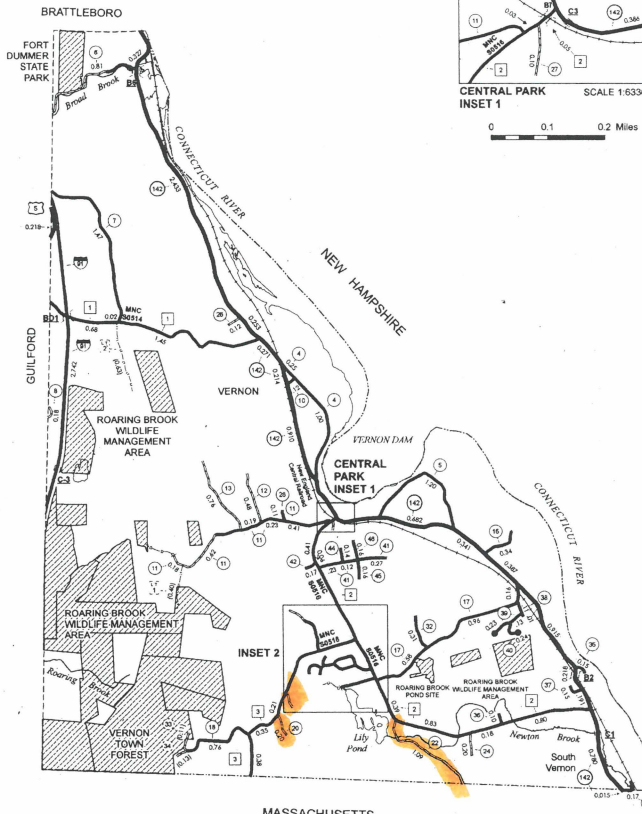
- FEDERAL CLASSIFICATION IDENTIFIER
- FAU URBAN ARTERIAL OR COLLECTOR
- MA MINOR ARTERIAL
- MJC MAJOR COLLECTOR
- MNC MINOR COLLECTOR
- PA PRINCIPAL ARTERIAL

DISCLAIMER:

The untraveled highways (fold-out town highways), discontinued highways, and legal trails shown hereon are those of which the Agency of Transportation has record; others may exist. Highway and bridge data by the Agency of Transportation, Policy & Planning Division. All other data from the Vermont Center for Geographic Information.

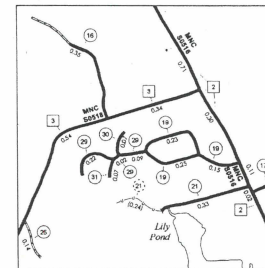
STRUCTURES - SURFACE WATER NOTE:

Town short structures (bridges or culverts from 8-feet to less than 20-feet) were not represented due to inconsistencies in the data. The surface waters are from the Vermont Hydrological Dataset (VHD). Only the named streams are shown.



CENTRAL PARK INSET 1

SCALE 1:6336
0 0.1 0.2 Miles



INSET 2

SCALE 1:12672
0 0.2 0.4 Miles

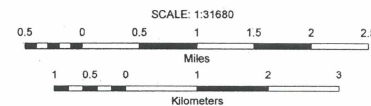


VERMONT
GENERAL HIGHWAY MAP
Town of Vernon
WINDHAM COUNTY

Transportation District #2

Prepared by the
Vermont Agency of Transportation
Policy & Planning Division
in cooperation with
U.S. Department of Transportation
Federal Highway Administration

Mileage as of February 10, 2008
Map generated September, 2008



Vermont State Plane Coordinate System
North American Datum of 1983
SPCS Zone Identifier: 4400
Geoid Reference System 80
4,000-meter grid, Easting - Northing

*Highway 20, 25 paved to end
Highway 22 paved to Massachusetts line*

