

CERTIFICATE OF HIGHWAY MILEAGE  
YEAR ENDING FEBRUARY 10, 2011

Fill out form, make and file copy with the Town Clerk, and mail ORIGINAL, before February 20, 2011 to:  
Vermont Agency of Transportation, Division of Planning, Outreach and Community Affairs, One National Life  
Drive, Montpelier, VT 05633.

We, the members of the legislative body of STRATTON in WINDHAM County  
on an oath state that the mileage of highways, according to Vermont Statutes Annotated, Title 19, Section 305,  
added 1985, is as follows:

PART I - CHANGES TOTALS - Please fill in and calculate totals.

Town Highways	Previous Mileage	Added Mileage	Subtracted Mileage	Total	Scenic Highways
Class 1	0.000				0.000
Class 2	16.710				0.000
Class 3	11.59				0.000
State Highway	1.337				0.000
<b>Total</b>	<b>29.637</b>				<b>0.000</b>
* Class 1 Lane	0.000				0.000
* Class 4	0.00				
* Legal Trail	0.00				
* Unidentified Corridor	0.00				

\* Mileage for Class 1 Lane, Class 4, Legal Trail, and Unidentified Corridor classifications are NOT included in total.

PART II - INFORMATION AND DESCRIPTION OF CHANGES SHOWN ABOVE.

- NEW P... of Completion and Opening".
- DISCO... lings (minutes of meeting).
- RECL... copy of proceedings (minutes of meeting).
- SCEN... nating/discontinuing Scenic Highways.

The mileage has not changed, but the configuration has been incorrect. I have attached two maps showing correction to TH 17.

IF THERE A Stratton sign below.

PART III - SIGNATURES - PLEASE SIGN.

Selectmen/ Aldermen/ Trustees Signatures: Albert J. Taylor J. A. R.  
David K. Taylor  
John J. Taylor

T/C/V Clerk Signature: David K. Taylor Date Filed: 1/10/2011

Please sign ORIGINAL and return it for Transportation signature.

AGENCY OF TRANSPORTATION APPROVAL: Signed copy will be returned to T/C/V Clerk.

APPROVED: Johnathan Croft DATE: 6/29/2011  
Representative, Agency of Transportation  
Johnathan Croft

**CERTIFICATE OF HIGHWAY MILEAGE  
YEAR ENDING FEBRUARY 10, 2011**

Fill out form, make and file copy with the Town Clerk, and mail ORIGINAL, before February 20, 2011 to:  
Vermont Agency of Transportation, Division of Planning, Outreach and Community Affairs, One National Life  
Drive, Montpelier, VT 05633.

We, the members of the legislative body of STRATTON in WINDHAM County  
on an oath state that the mileage of highways, according to Vermont Statutes Annotated, Title 19, Section 305,  
added 1985, is as follows:

**PART I - CHANGES TOTALS - Please fill in and calculate totals.**

Town Highways	Previous Mileage	Added Mileage	Subtracted Mileage	Total	Scenic Highways
Class 1	0.000				0.000
Class 2	16.710				0.000
Class 3	11.59				0.000
State Highway	1.337				0.000
<b>Total</b>	<b>29.637</b>				<b>0.000</b>
* Class 1 Lane	0.000				0.000
* Class 4	0.00				
* Legal Trail	0.00				
* Unidentified Corridor	0.00				

\* Mileage for Class 1 Lane, Class 4, Legal Trail, and Unidentified Corridor classifications are NOT included in total.

**PART II - INFORMATION AND DESCRIPTION OF CHANGES SHOWN ABOVE.**

- NEW HIGHWAYS:** Please attach Selectmen's "Certificate of Completion and Opening".
- DISCONTINUED:** Please attach SIGNED copy of proceedings (minutes of meeting).
- RECLASSIFIED/REMEASURED:** Please attach SIGNED copy of proceedings (minutes of meeting).
- SCENIC HIGHWAYS:** Please attach a copy of order designating/discontinuing Scenic Highways.

IF THERE ARE NO CHANGES IN MILEAGE: Check box and sign below.

**PART III - SIGNATURES - PLEASE SIGN.**

Selectmen/ Aldermen/ Trustees Signatures:

*[Handwritten signatures]*

T/C/V Clerk Signature:

*[Handwritten signature: David K...]*

Date Filed:

*1/10/2011*

Please sign ORIGINAL and return it for Transportation signature.

AGENCY OF TRANSPORTATION APPROVAL:

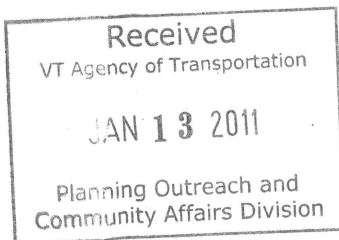
Signed copy will be returned to T/C/V Clerk.

APPROVED:

*[Handwritten signature]*  
Representative, Agency of Transportation  
**Johnathan Croft**

DATE:

*6/30/2011*



## Vermont Statutes Annotated

### 19 V.S.A. § 305. Measurement and inspection

#### § 305. Measurement and inspection

(a) After reasonable notice to the selectboard, a representative of the agency may measure and inspect the class 1, 2, and 3 town highways in each town to verify the accuracy of the records on file with the agency. Upon request, the selectboard or their designee shall be permitted to accompany the representative of the agency during the measurement and inspection. The agency shall notify the town when any highway, or portion of a highway, does not meet the standards for its assigned class. If the town fails, within one year, to restore the highway or portion of the highway to the accepted standard, or to reclassify, or to discontinue, or develop an acceptable schedule for restoring to the accepted standards, the agency for purposes of apportionment under section 306 of this title shall deduct the affected mileage from that assigned to the town for the particular class of the road in question.

(b) Annually, on or before February 10, the selectboard shall file with the town clerk a sworn statement of the description and measurements of all class 1, 2, 3, and 4 town highways and trails then in existence, including any special designation such as a throughway or scenic highway. When class 1, 2, 3, or 4 town highways, trails, or unidentified corridors are accepted, discontinued, or reclassified, a copy of the proceedings shall be filed in the town clerk's office and a copy shall be forwarded to the agency.

(c) All class 1, 2, 3, and 4 town highways and trails shall appear on the town highway maps by July 1, 2015.

(d) At least 45 days prior to first including a town highway or trail that is not clearly observable by physical evidence of its use as a highway or trail and that is legally established prior to February 10, 2006 in the sworn statement required under subsection (b) of this section, the legislative body of the municipality shall provide written notice and an opportunity to be heard at a duly warned meeting of the legislative body to persons owning lands through which a highway or trail passes or abuts.

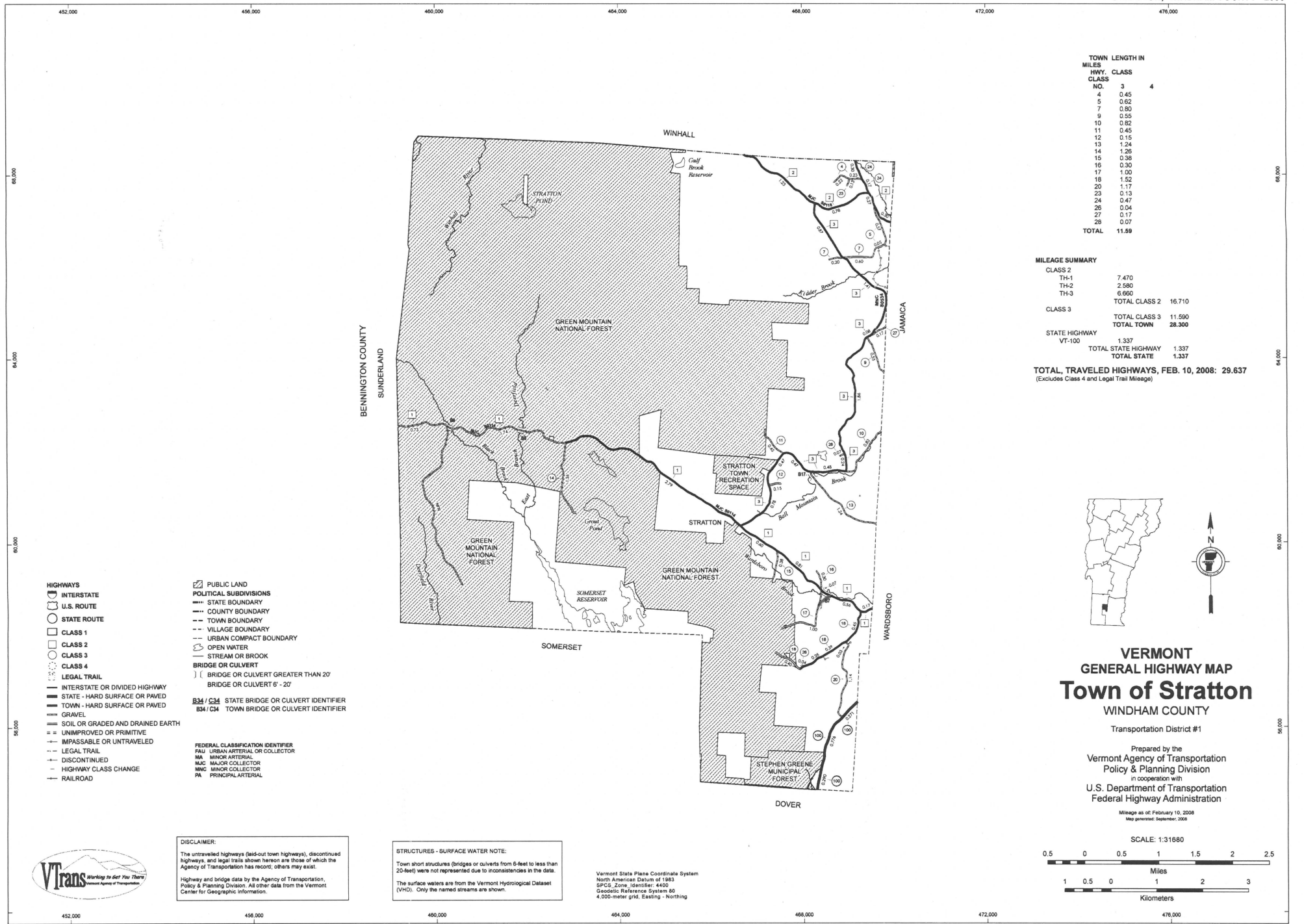
(e) The agency shall not accept any change in mileage until the records required to be filed in the town clerk's office by this section are received by the agency. A request by a municipality to the agency for a change in mileage shall include a description of the affected highway or trail, a copy of any surveys of the affected highway or trail, minutes of meetings at which the legislative body took action with respect to the changes, and a current town highway map with the requested deletions and additions sketched on it. A survey shall not be required for class 4 town highways that are legally established prior to February 10, 2006. All records filed with the agency are subject to verification in accordance with subsection (a) of this section.

(f) The selectboard of any town who are aggrieved by a finding of the agency concerning the measurement, description or classification of a town highway may appeal to the transportation board by filing a notice of appeal with the executive secretary of the transportation board.

(g) The agency shall provide each town with a map of all of the highways in that town together with the mileage of each class 1, 2, 3, and 4 highway, as well as each trail, and such other information as the agency deems appropriate.

Excerpt of 19 V.S.A. § 305 - *Measurement and inspection* from Vermont Statutes Online located at –  
<http://www.leg.state.vt.us/statutes/fullsection.cfm?Title=19&Chapter=003&Section=00305>

12/20/2010



TOWN LENGTH IN MILES

HWY. CLASS NO.	3	4
4	0.45	
5	0.62	
7	0.80	
9	0.55	
10	0.82	
11	0.45	
12	0.15	
13	1.24	
14	1.26	
15	0.38	
16	0.30	
17	1.00	
18	1.52	
20	1.17	
23	0.13	
24	0.47	
26	0.04	
27	0.17	
29	0.07	
<b>TOTAL</b>	<b>11.59</b>	

MILEAGE SUMMARY

CLASS 2		
TH-1	7.470	
TH-2	2.580	
TH-3	6.660	
<b>TOTAL CLASS 2</b>	<b>16.710</b>	
CLASS 3		
<b>TOTAL CLASS 3</b>	<b>11.590</b>	
<b>TOTAL TOWN</b>	<b>28.300</b>	
STATE HIGHWAY		
VT-100	1.337	
<b>TOTAL STATE HIGHWAY</b>	<b>1.337</b>	
<b>TOTAL STATE</b>	<b>1.337</b>	

**TOTAL, TRAVELED HIGHWAYS, FEB. 10, 2008: 29.637**  
(Excludes Class 4 and Legal Trail Mileage)



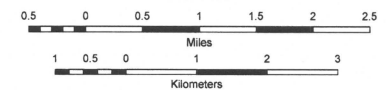
**VERMONT**  
**GENERAL HIGHWAY MAP**  
**Town of Stratton**  
WINDHAM COUNTY

Transportation District #1

Prepared by the  
Vermont Agency of Transportation  
Policy & Planning Division  
in cooperation with  
U.S. Department of Transportation  
Federal Highway Administration

Mileage as of February 10, 2008  
Map generated: September, 2008

SCALE: 1:31680



**HIGHWAYS**

- INTERSTATE
- U.S. ROUTE
- STATE ROUTE
- CLASS 1
- CLASS 2
- CLASS 3
- CLASS 4
- LEGAL TRAIL
- INTERSTATE OR DIVIDED HIGHWAY
- STATE - HARD SURFACE OR PAVED
- TOWN - HARD SURFACE OR PAVED
- GRAVEL
- SOIL OR GRADED AND DRAINED EARTH
- UNIMPROVED OR PRIMITIVE
- IMPASSABLE OR UNTRAVELED
- LEGAL TRAIL
- DISCONTINUED
- HIGHWAY CLASS CHANGE
- RAILROAD

- PUBLIC LAND
- POLITICAL SUBDIVISIONS
- STATE BOUNDARY
- COUNTY BOUNDARY
- TOWN BOUNDARY
- VILLAGE BOUNDARY
- URBAN COMPACT BOUNDARY
- OPEN WATER
- STREAM OR BROOK
- BRIDGE OR CULVERT
- ( ) BRIDGE OR CULVERT GREATER THAN 20'
- [ ] BRIDGE OR CULVERT 6' - 20'
- B34 / C34 STATE BRIDGE OR CULVERT IDENTIFIER
- B34 / C34 TOWN BRIDGE OR CULVERT IDENTIFIER

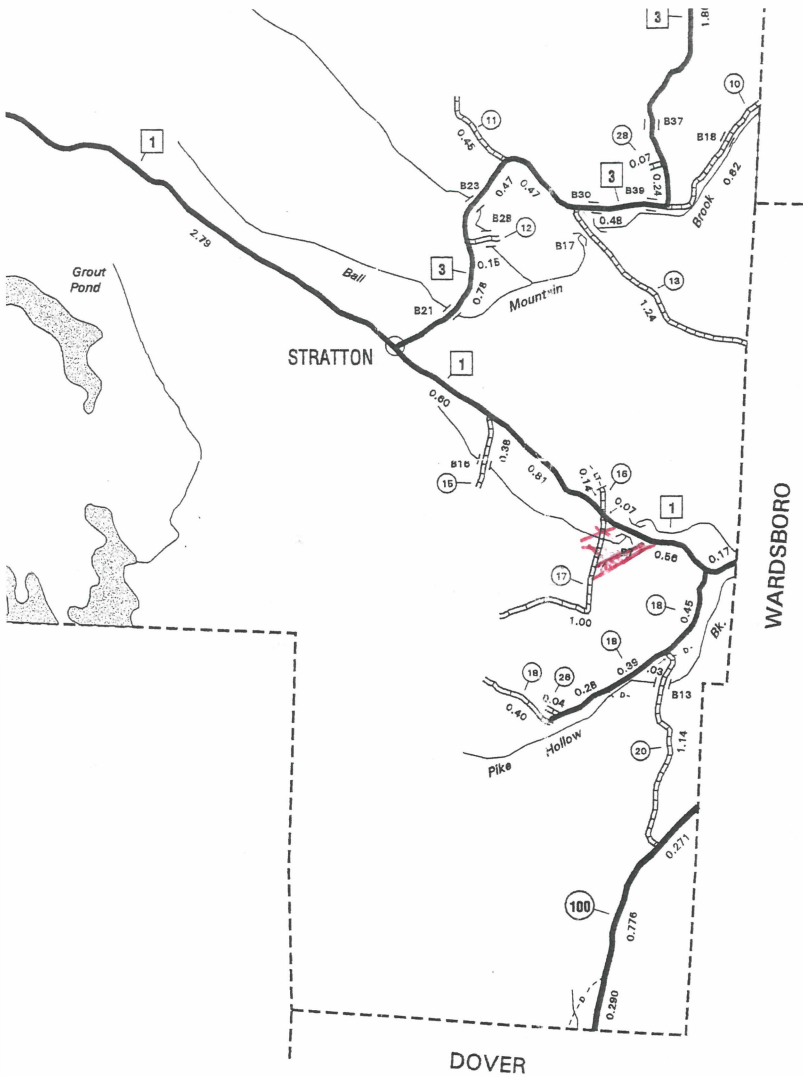
- FEDERAL CLASSIFICATION IDENTIFIER
- PAU URBAN ARTERIAL OR COLLECTOR
  - MA MINOR ARTERIAL
  - MAJ MAJOR COLLECTOR
  - MNC MINOR COLLECTOR
  - PA PRINCIPAL ARTERIAL

**DISCLAIMER:**  
The untraveled highways (laid-out town highways), discontinued highways and legal trails shown hereon are those of which the Agency of Transportation has records; others may exist.  
Highway and bridge data by the Agency of Transportation, Policy & Planning Division. All other data from the Vermont Center for Geographic Information.

**STRUCTURES - SURFACE WATER NOTE:**  
Town short structures (bridges or culverts from 6-feet to less than 20-feet) were not represented due to inconsistencies in the data.  
The surface waters are from the Vermont Hydrological Dataset (VHD). Only the named streams are shown.

Vermont State Plane Coordinate System  
North American Datum of 1983  
SPCS Zone Identifier: 4400  
Geodetic Reference System 80  
4,000-meter grid, Easting - Northing



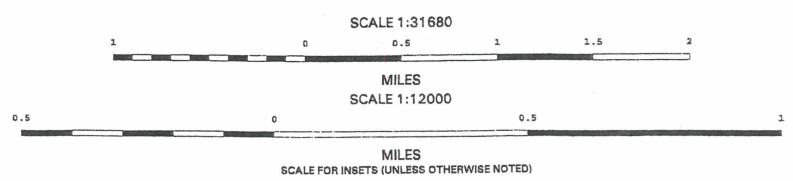


MILEAGE SUMMARY

CLASS 1 TOWN HIGHWAYS:			
TOTAL, CLASS 1 TOWN HWYS.			0.000
CLASS 2 TOWN HIGHWAYS:			
NO. CLASS 2 TOWN HWYS.	7.470		
NO. CLASS 2 TOWN HWYS.	2.580		
NO. CLASS 2 TOWN HWYS.	6.660		
TOTAL, CLASS 2 TOWN HWYS.		16.710	
CLASS 3 TOWN HIGHWAYS:			
TOTAL, CLASS 3 TOWN HWYS.		11.430	
TOTAL, TOWN HWYS.			28.140
STATE HIGHWAYS:			
INTERSTATE RAMP	0.000		
TOTAL, INTERSTATE HWYS.		0.000	
STATE HWY. 100	1.337		
TOTAL, NON-INTERSTATE HWYS.		1.337	
TOTAL, STATE HWYS.			1.337
TOTAL, TRAVELLED HWYS., FEB. 10, 2003			29.477
(EXCLUDES CLASS 4 MILEAGE)			

# VERMONT GENERAL HIGHWAY MAP TOWN OF STRATTON

PREPARED BY THE  
VERMONT AGENCY OF TRANSPORTATION  
PROGRAM DEVELOPMENT DIVISION  
IN COOPERATION WITH  
U. S. DEPARTMENT OF TRANSPORTATION  
FEDERAL HIGHWAY ADMINISTRATION



DISCLAIMER:  
Highway and bridge data by Vermont Agency of Transportation, Division of Program Development. All other data from Vermont Center for Geographic Information.