

1/8/2025

VTrans Mapping Section

District 2
Certcode 1312-0

**CERTIFICATE OF HIGHWAY MILEAGE
YEAR ENDING FEBRUARY 10, 2025**

Fill out form, make and file a copy with the Town Clerk, and submit the Mileage Certificate on or before February 20, 2024 to: Vermont Agency of Transportation, Division of Policy, Planning and Intermodal Development, Mapping Section via email to: aot.mileagecertificates@vermont.gov or if necessary via mail to: VTrans PPAID - Mapping Section, 219 North Main Street, Barre VT 05641.

We, the members of the legislative body of NEWFANE in WINDHAM County
on an oath state that the mileage of highways, according to Vermont Statutes Annotated, Title 19, Section 305,
added 1985, is as follows:

PART I - CHANGES TOTALS - Please fill in and calculate totals.

Town Highways	Previous Mileage	Added Mileage	Subtracted Mileage	Total	Scenic Highways
Class 1	0.000			0.0	0.000
Class 2	16.900			16.900	0.000
Class 3	47.03		-0.04	47.03 46.99	0.000
State Highway	5.662			5.662	0.000
Total	69.592			69.610 69.552	0.000
* Class 1 Lane	0.000			0	
* Class 4	0.66			0.66	0.000
* Legal Trail	12.46			12.46	

* Mileage for Class 1 Lane, Class 4, and Legal Trail classifications are NOT included in total.

PART II - INFORMATION AND DESCRIPTION OF CHANGES SHOWN ABOVE.

- NEW HIGHWAYS:** Please attach Selectmen's "Certificate of Completion and Opening". Mileages entered by P. DeAndrea, VTrans, 1/8/2025 per email to Town 1/8/2025
- DISCONTINUED:** Please attach SIGNED copy of proceedings (minutes of meeting).
- RECLASSIFIED/REMEASURED:** Please attach SIGNED copy of proceedings (minutes of meeting).
-0.04 mi CL3 TH-15 (River Rd) added previously unmapped approach to TH-83 and remeasured
- SCENIC HIGHWAYS:** Please attach a copy of order designating/discontinuing Scenic Highways.

IF THERE ARE NO CHANGES RECORDED THIS YEAR: Place an X in the box and sign below. ☐

PART III - SIGNATURES - PLEASE SIGN.

Signatures of Selectmen/ Aldermen/ Trustees:

Signature of T/C/V Clerk: Carol Hesselbach Date Filed: 1/7/25

Please sign ORIGINAL and return it for Transportation signature.

AGENCY OF TRANSPORTATION APPROVAL: Signed copy will be returned to T/C/V Clerk.

APPROVED:

Johnathan Croft
8B1F350F308C4C9
Representative, Agency of Transportation

DATE:

1/9/2025

"X" removed by
P. DeAndrea, VTrans,
1/8/2025 per changes in #3
above. See email to Town
1/8/2025

C10

-0.04 mi CL3 TH-15 (River Rd) added
previously unmapped approach to
TH-83 and remeasured

(CL3 TH-15 from 3.39 to 3.35 miles)

Smith Brook

B48

RIVER RD
TH-15

UPPER RAILROAD LN
LT-11

VT ROUTE 30
VT-30

BROOK ST

TH-83



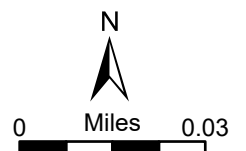
Locus Map

Mileage Certificate Changes 2025

NEWFANE TH-15

(CTUA:1312-0)
(CERTCODE:1312-0)

Mapping Section
Division of Policy and Planning
Vermont Agency of Transportation -- January 9, 2025

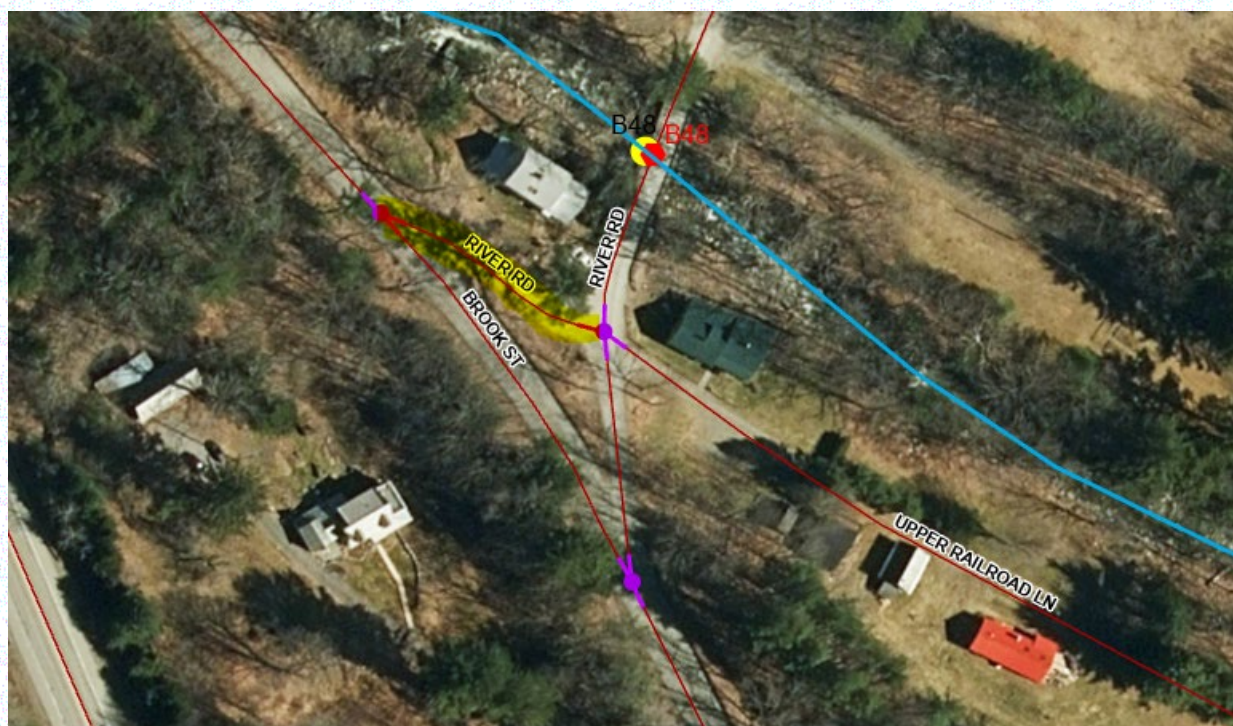


From: [AOT - Mileage Certificates](#)
To: tnewfane@newfanevt.com; [AOT - Mileage Certificates](#)
Cc: newfanegarage@newfanevt.com
Subject: RE: Newfane 2025 Certificate of Highway Mileage
Date: Wednesday, January 8, 2025 10:22:31 AM
Attachments: [image003.png](#)
[image004.png](#)
[image001.png](#)

Hi Wannetta,

Thank you so much for the Certificate. I just wanted to point out that there is a change that was pre-loaded in Part II, #3 on the certificate (see 1st image below) due to an approach on TH-15 that we did not previously map that we are mapping now and a remeasure of the road (see yellow highlight in 2nd image below). I can update the certificate before we sign it and send back to you, but you should inform the Selectboard of this minor change.

3. RECLASSIFIED/REMEASURED: Please attach SIGNED copy of proceedings (minutes of meeting).
-0.04 mi CL3 TH-15 (River Rd) added previously unmapped approach to TH-83 and remeasured



Thank you,

Pam

Pamela DeAndrea (she/her) | AOT GIS Professional III
 Policy, Planning & Research Bureau – Mapping Section

Policy, Planning & Intermodal Development Division
Vermont Agency of Transportation
219 N. Main Street | Barre, VT 05641
[802-793-7555 phone](tel:802-793-7555) | pam.deandrea@vermont.gov
<http://vtrans.vermont.gov>



Help raise money for Vermonters impacted by flood damage and show your Vermont pride with *Vermont Strong* and *Tough Too* license plates and socks. [Click here to purchase your Vermont Strong gear](#) or visit DMV.Vermont.gov/VermontStrong23.

Impacted Vermonters can find resources and referrals by visiting Vermont.Gov/Flood.

From: tnewfane@newfanevt.com <tnewfane@newfanevt.com>
Sent: Wednesday, January 8, 2025 9:05 AM
To: AOT - Mileage Certificates <AOT.MileageCertificates@vermont.gov>
Cc: newfanegarage@newfanevt.com
Subject: Newfane 2025 Certificate of Highway Mileage

EXTERNAL SENDER: Do not open attachments or click on links unless you recognize and trust the sender.

Good morning,

I have attached the document from the Town of Newfane highway mileage certificate.

Please let me know if you have any questions or cannot open the attachment.

Enjoy the Day!
Wannetta Powling
Town of Newfane
Administrative Assistant
PO Box 36
Newfane VT 05345
802-365-7772 ext 4
tnewfane@newfanevt.com.

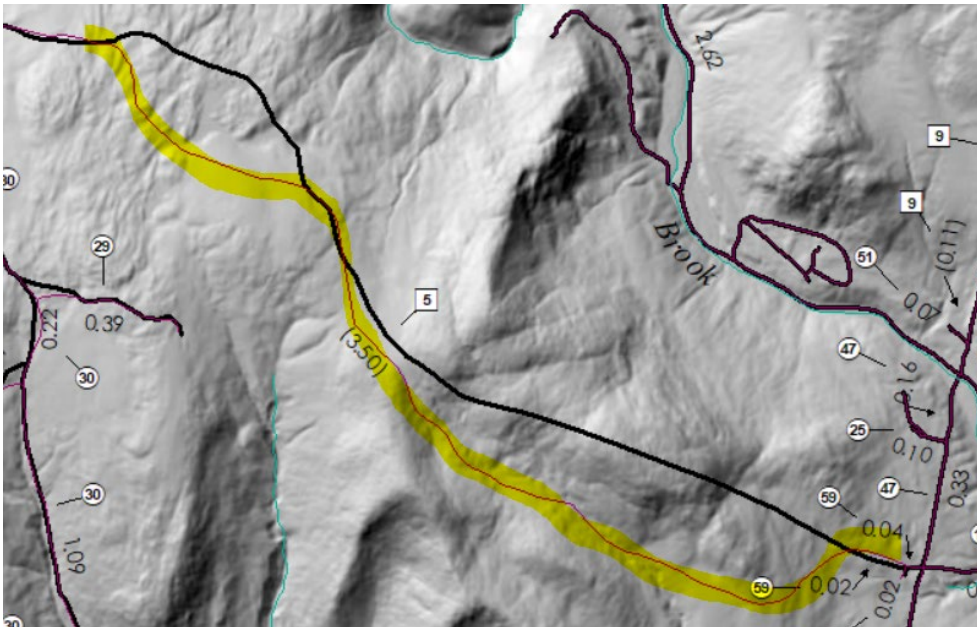
Your role in the Newfane Selectboard's business is crucial. Please be aware that any response or reply to this email is considered public records and subject to disclosure.

From: [DeAndrea, Pam](#)
To: ["tnewfane@newfanevt.com"](#)
Cc: [jnugent@windhamregional.org](#); ["tclerknewfane@newfanevt.com"](#); ["newfanegarage@newfanevt.com"](#); [Croft, Johnathan](#)
Subject: changes to roads for next mileage certificate and Town Highway map
Date: Thursday, November 2, 2023 1:17:00 PM
Attachments: [image001.png](#)
[image002.png](#)
[image003.png](#)
[image004.png](#)
[image005.png](#)
[image007.png](#)

Good afternoon Wannetta,

Jeff Nugent from the Windham Regional Commission alerted us to some updates that may be needed to your Town Highway Map. I have included images and possible changes within this email. I was wondering if you may have the historic laying out documents/survey information for these roads, which will aid in accurately locating their original legally established alignment.

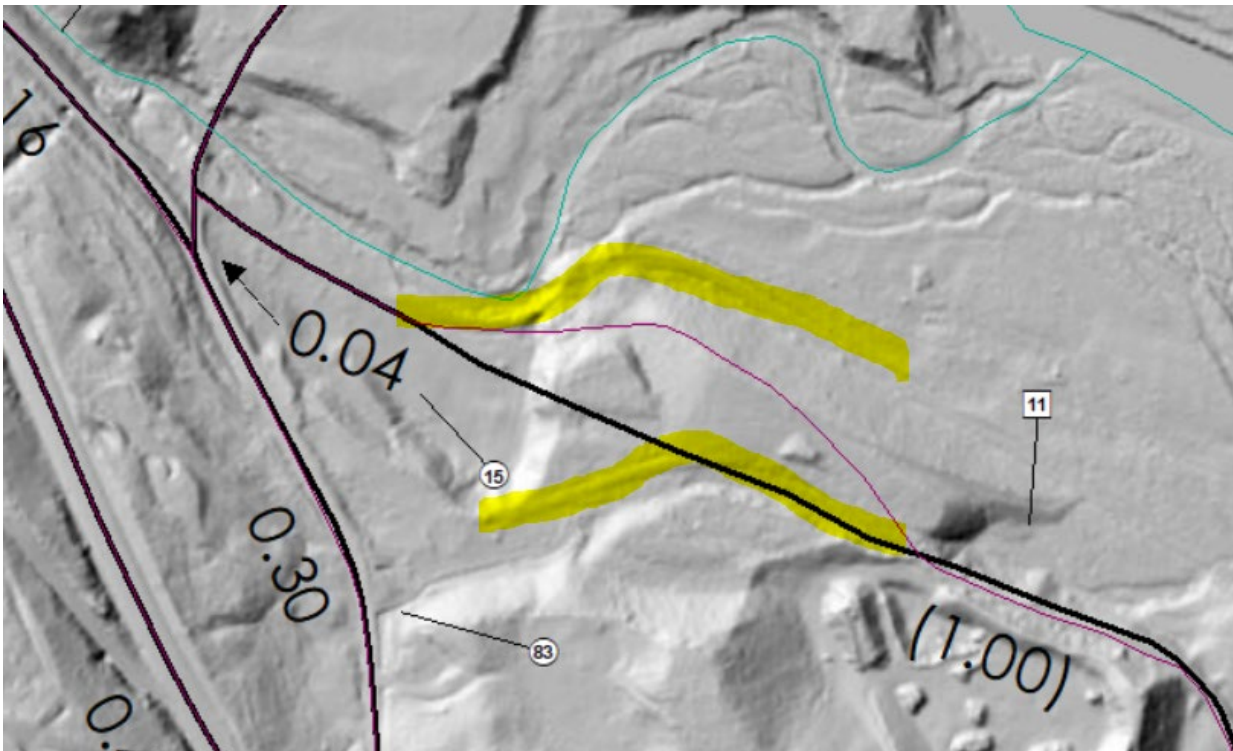
The first one in question is **LT-5 (Old County Road)**. Jeff was able to locate this for us much better using elevation data (LiDAR) (see yellow highlight in image below), but it would be great to confirm this with survey information if you have it.

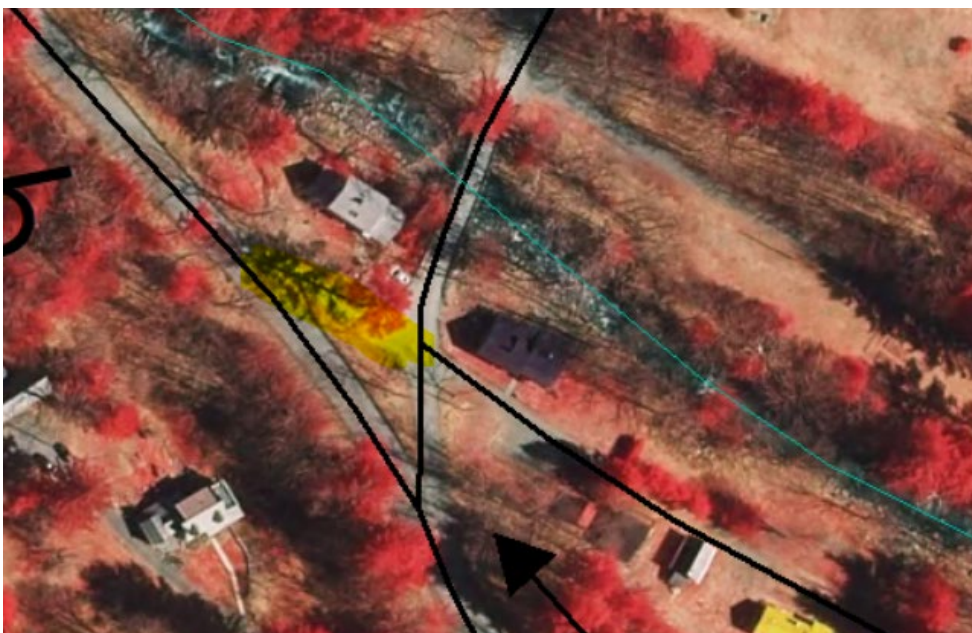


The next road I am wondering about is **TH-37 (Deer Hill Rd)**, which was pointed out to Jeff by the Road Foreman. You can see in the image below that we may currently have a driveway mapped as part of the road but Jeff has indicated to me that it should follow the yellow highlight to the last house. This length matches the AOT miles of 0.30 miles much better.

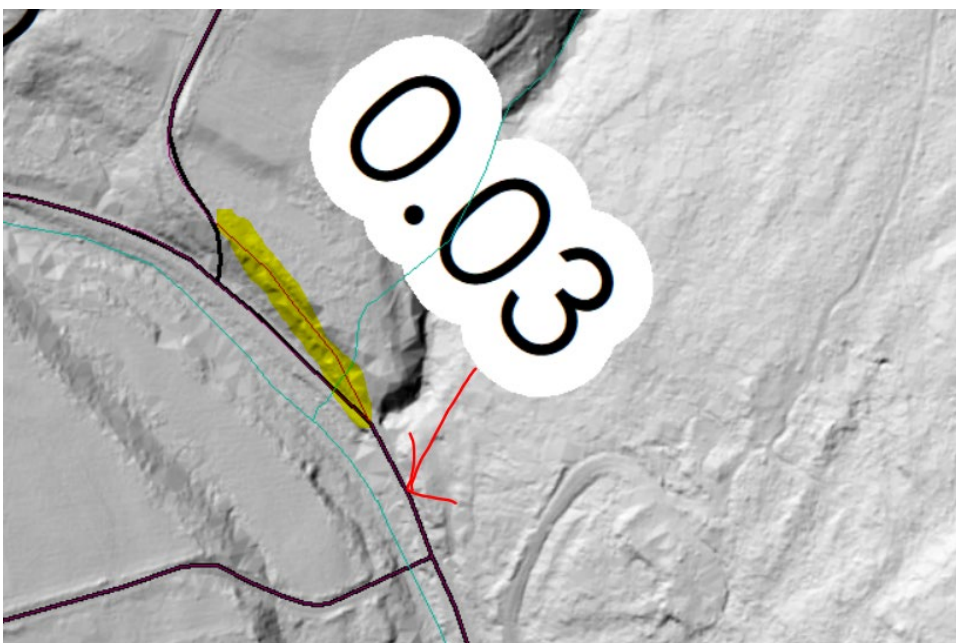


The third road is **LT-11 (Upper Railroad Ln)**. I am rather unsure about the alignment of this road as E911 has it mapped a little differently (pink line) than we do. Looking at the elevation data, it could very well follow either of the yellow highlights below. When looking at this I noticed the intersection of TH-83 and TH-15 should also be updated to show the fork on TH-83 (see 2nd image below).





Jeff also alerted us to update the intersection of **TH-19 and TH-24**, which is very straightforward looking at the elevation data (see image below). What Jeff had mapped in the yellow highlight matches the elevation data and the AOT Miles of the small portion of TH-19 of 0.03 miles much better.



If the Town has any original surveys for any of these roads, we would appreciate it if you could send them our way for verification. If not, we will go with the best available data to make these updates and will let you know if there will be any mileage changes that can be pre-loaded on your 2024 Mileage Certificate for the Selectboard to approve.

Thank you!

Pam

Pamela DeAndrea (she/her) | AOT GIS Professional III
Policy, Planning & Research Bureau – Mapping Section
Policy, Planning & Intermodal Development Division
Vermont Agency of Transportation
219 N. Main Street | Barre, VT 05641
[802-793-7555 phone](tel:802-793-7555) | pam.deandrea@vermont.gov
<http://vtrans.vermont.gov>



Help raise money for Vermonters impacted by flood damage and show your Vermont pride with *Vermont Strong* and *Tough Too* license plates and socks. [Click here to purchase your Vermont Strong gear](#) or visit DMV.Vermont.gov/VermontStrong23.

Impacted Vermonters can find resources and referrals by visiting Vermont.Gov/Flood.