

CERTIFICATE OF HIGHWAY MILEAGE  
YEAR ENDING FEBRUARY 10, 2016

Fill out form, make and file copy with the Town Clerk, and mail ORIGINAL, before February 20, 2016 to:  
Vermont Agency of Transportation, Division of Policy, Planning and Intermodal Development, Mapping Section  
One National Life Drive, Montpelier, VT 05633.

We, the members of the legislative body of BRATTLEBORO in WINDHAM County  
on an oath state that the mileage of highways, according to Vermont Statutes Annotated, Title 19, Section 305,  
added 1985, is as follows:

PART I - CHANGES TOTALS - Please fill in and calculate totals.

Town Highways	Previous Mileage	Added Mileage	Subtracted Mileage	Total	Scenic Highways
Class 1	6.420				0.000
Class 2	13.890				0.000
Class 3	65.01				0.000
State Highway	22.195	+ 0.012		22.207	0.000
<b>Total</b>	<b>107.515</b>			<b>107.527</b>	<b>0.000</b>
* Class 1 Lane	0.503				
* Class 4	7.56				0.000
* Legal Trail	0.00				

\* Mileage for Class 1 Lane, Class 4, and Legal Trail classifications are NOT included in total.

PART II - INFORMATION AND DESCRIPTION OF CHANGES SHOWN ABOVE.

1. NEW HIGHWAYS: Please attach Selectmen's "Certificate of Completion and Opening".
2. DISCONTINUED: Please attach SIGNED copy of proceedings (minutes of meeting).
3. RECLASSIFIED/REMEASURED: Please attach SIGNED copy of proceedings (minutes of meeting).  
+0.012 mi State Highway: I-91 Exit 1 spur off Ramp E mileage wasn't accounted for previously
4. SCENIC HIGHWAYS: Please attach a copy of order designating/discontinuing Scenic Highways.

IF THERE ARE NO CHANGES IN MILEAGE: Check box and sign below.

PART III - SIGNATURES - PLEASE SIGN.

Selectmen/ Aldermen/ Trustees Signatures:

*[Handwritten signatures]*  
Kate O'Connor  
Dana Mearns  
Paul Sch...

T/C/V Clerk Signature:

*[Handwritten signature]*  
Dorothy L. Cuddy

Date Filed:

February 3, 2016

Please sign ORIGINAL and return it for Transportation signature.

AGENCY OF TRANSPORTATION APPROVAL: Signed copy will be returned to T/C/V Clerk.

APPROVED:

*[Handwritten signature]*  
Representative, Agency of Transportation

DATE:

5/12/2016



Vermont Statutes Annotated

19 V.S.A. § 305. Measurement and inspection

Received

FEB 11 2016

Policy, Planning & Intermodal  
Development Division

§ 305. Measurement and inspection

(a) After reasonable notice to the selectboard, a representative of the agency may measure and inspect the class 1, 2, and 3 town highways in each town to verify the accuracy of the records on file with the agency. Upon request, the selectboard or their designee shall be permitted to accompany the representative of the agency during the measurement and inspection. The agency shall notify the town when any highway, or portion of a highway, does not meet the standards for its assigned class. If the town fails, within one year, to restore the highway or portion of the highway to the accepted standard, or to reclassify, or to discontinue, or develop an acceptable schedule for restoring to the accepted standards, the agency for purposes of apportionment under section 306 of this title shall deduct the affected mileage from that assigned to the town for the particular class of the road in question.

(b) Annually, on or before February 10, the selectboard shall file with the town clerk a sworn statement of the description and measurements of all class 1, 2, 3, and 4 town highways and trails then in existence, including any special designation such as a throughway or scenic highway. When class 1, 2, 3, or 4 town highways, trails, or unidentified corridors are accepted, discontinued, or reclassified, a copy of the proceedings shall be filed in the town clerk's office and a copy shall be forwarded to the agency.

(c) All class 1, 2, 3, and 4 town highways and trails shall appear on the town highway maps by July 1, 2015.

(d) At least 45 days prior to first including a town highway or trail that is not clearly observable by physical evidence of its use as a highway or trail and that is legally established prior to February 10, 2006 in the sworn statement required under subsection (b) of this section, the legislative body of the municipality shall provide written notice and an opportunity to be heard at a duly warned meeting of the legislative body to persons owning lands through which a highway or trail passes or abuts.

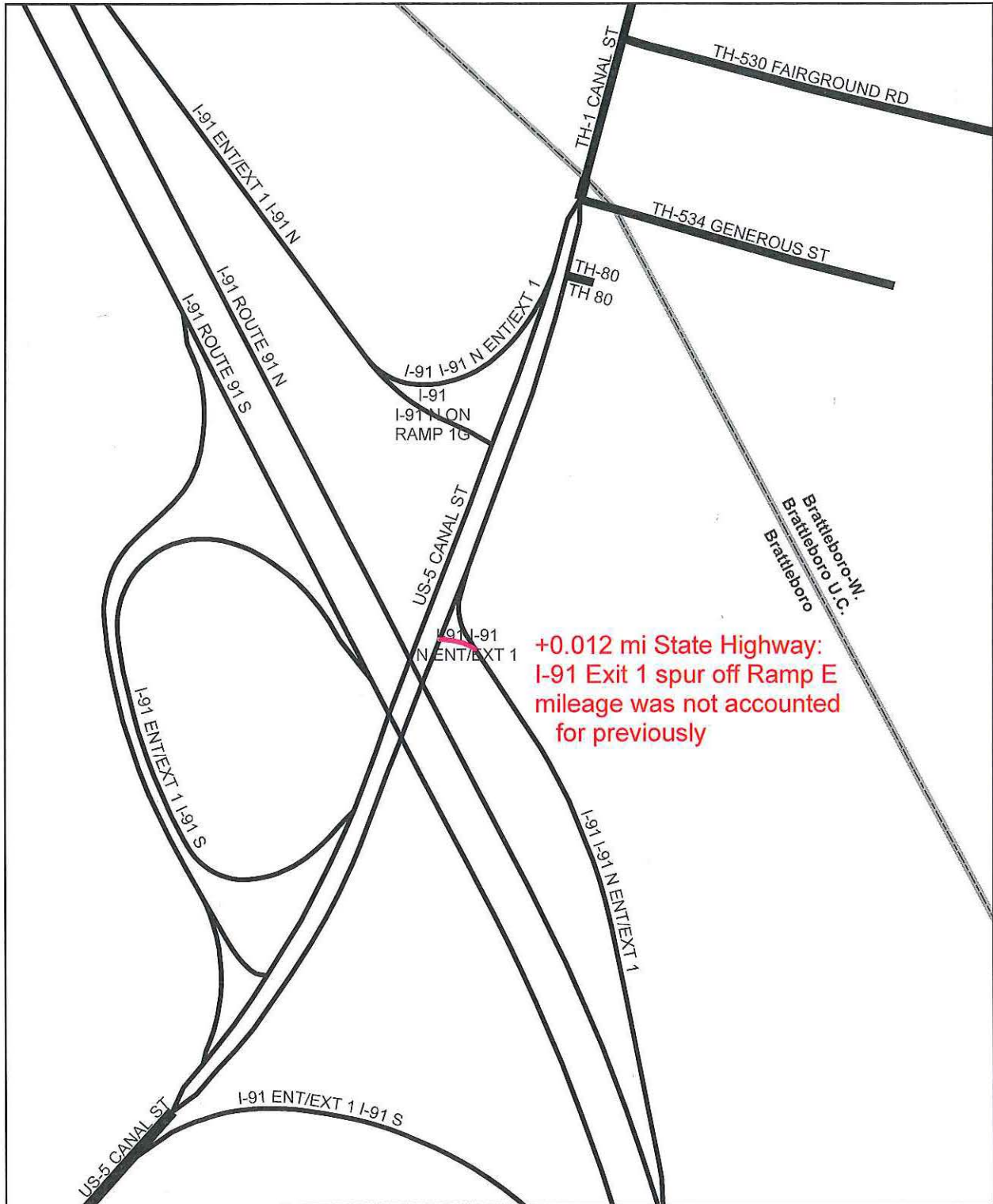
(e) The agency shall not accept any change in mileage until the records required to be filed in the town clerk's office by this section are received by the agency. A request by a municipality to the agency for a change in mileage shall include a description of the affected highway or trail, a copy of any surveys of the affected highway or trail, minutes of meetings at which the legislative body took action with respect to the changes, and a current town highway map with the requested deletions and additions sketched on it. A survey shall not be required for class 4 town highways that are legally established prior to February 10, 2006. All records filed with the agency are subject to verification in accordance with subsection (a) of this section.

(f) The selectboard of any town who are aggrieved by a finding of the agency concerning the measurement, description, or classification of a town highway may appeal to the transportation board by filing a notice of appeal with the executive secretary of the transportation board.

(g) The agency shall provide each town with a map of all of the highways in that town together with the mileage of each class 1, 2, 3, and 4 highway, as well as each trail, and such other information as the agency deems appropriate

Excerpt of 19 V.S.A. § 305 - *Measurement and inspection* from Vermont Statutes Online located at –  
<http://legislature.vermont.gov/statutes/section/19/003/00305>

December 2015



## Mileage Certificate Change 2016 BRATTLEBORO

(CTCODE: 1302)

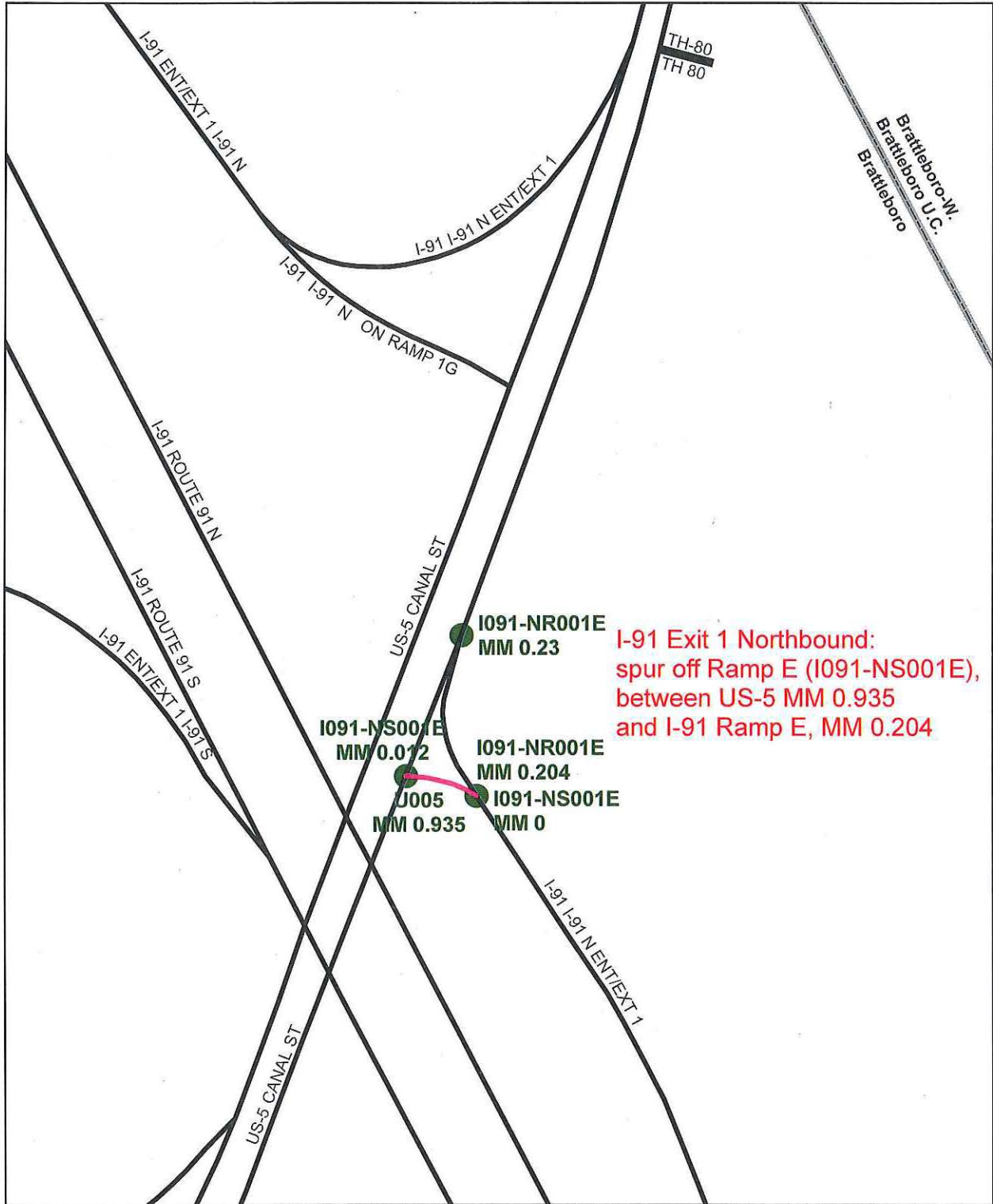
Mapping Section  
Division of Policy, Planning and Intermodal Development  
Vermont Agency of Transportation - March 2016



0 Miles 0.05







I-91 Exit 1 Northbound:  
 spur off Ramp E (I091-NS001E),  
 between US-5 MM 0.935  
 and I-91 Ramp E, MM 0.204

**Mileage Certificate Change 2016**  
**BRATTLEBORO**

(CTCODE: 1302)

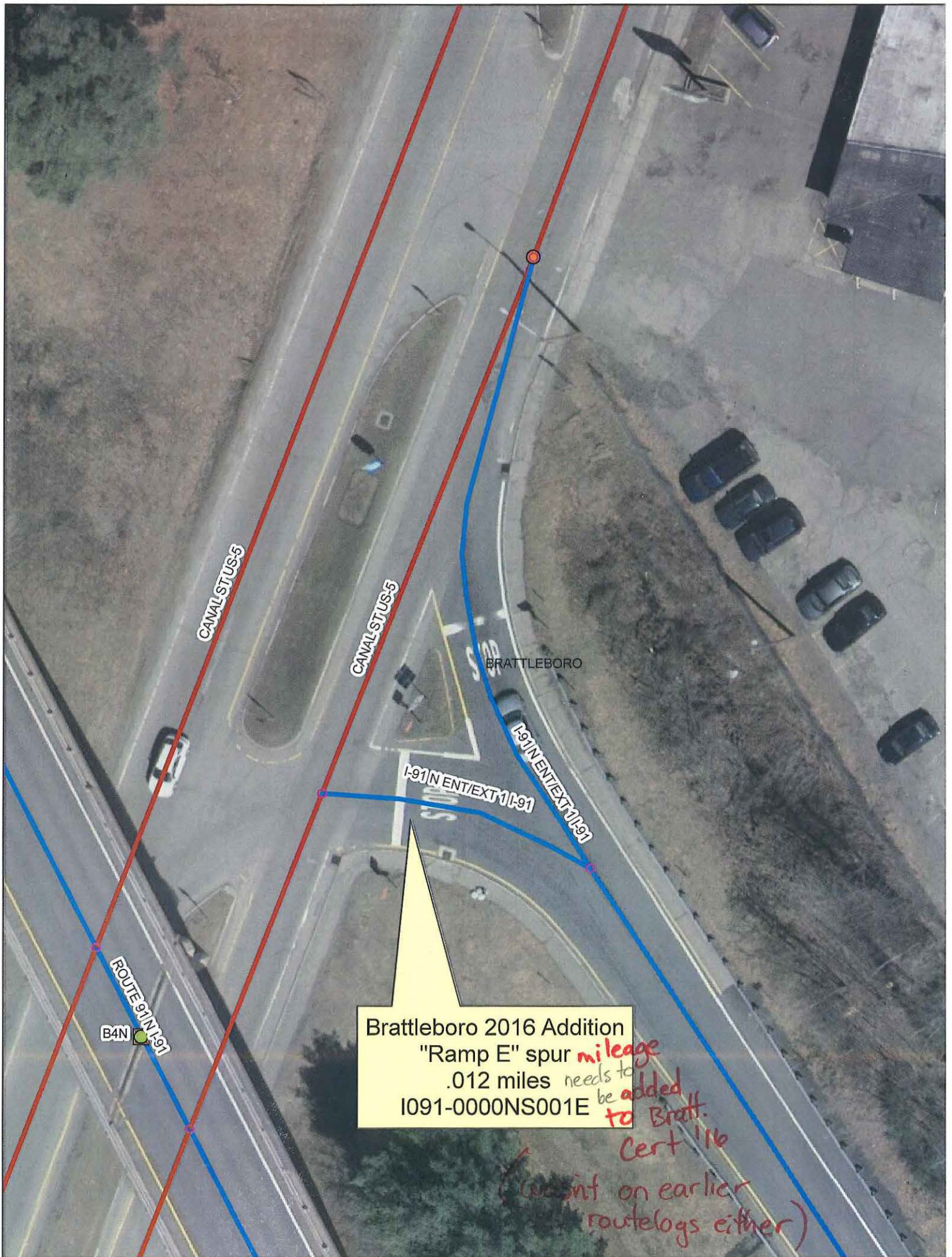
Mapping Section  
 Division of Policy, Planning and Intermodal Development  
 Vermont Agency of Transportation - March 2016



0 Miles 0.025







CANAL STUS-5

CANAL STUS-5

BRATTLEBORO

I-91 N EXT 1 I-91

I-91 N EXT 2 I-91

ROUTE 91 N I-91  
B4N

Brattleboro 2016 Addition  
"Ramp E" spur *mileage*  
.012 miles *needs to*  
I091-0000NS001E *be added*  
*to Bratt.*

*Cert 116*  
*(wasnt on earlier*  
*route logs either)*



## Alley, Kerry

---

**From:** Croft, Johnathan  
**Sent:** Monday, October 12, 2015 9:49 AM  
**To:** Alley, Kerry  
**Cc:** Moulton, Sara  
**Subject:** Addition of mileage for Brattleboro State Highway Mileage on 2016 Mileage Certificate

Good morning Kerry,

We need to add an update to the 2016 Brattleboro Mileage Certificate for the addition of I-91 Ramp E Spur of 0.012 miles. This corrects the bust between the LRS mileage and RDS AOTMILES on Ramp E. It seems that the AOTMILES on Ramp E was reduced to accommodate the spur, but the ARCMILES and LRS mileage are almost the same, requiring the spur mileage to added separately.

Please add 0.012 miles of State Highway for I091-0000NS001E on Brattleboro's pending Mileage Certificate. I am making the update in the RDSMALL to reflect the AOTMILES change and will flag the CERTYEAR as 2016.

Thanks,

Johnathan Croft  
VTrans Mapping Section  
(802) 828-2600

[johnathan.croft@vermont.gov](mailto:johnathan.croft@vermont.gov) – please note the updated email address