

CERTIFICATE OF HIGHWAY MILEAGE year ending FEB. 10, 1993

Fill out form, make & file COPY with the Town Clerk, & mail ORIGINAL before Feb. 10, 1993 to:
Vt. Agency of Transportation, Planning Dept., 133 State Street, Montpelier, Vt. 05633.

< IF NO CHANGES IN MILEAGE, OMIT PART I, CHECK PART II, SIGN PART III >

We, the Selectmen or Trustees or Aldermen of MORETOWN, WASHINGTON COUNTY
on an oath state that the mileage of highways, according to Title 19, V.S.A., Sec#305, added
1985, is as follows:

PART I - CHANGES & TOTALS - Please fill in and calculate totals.

DISTRICT 6

TOWN HIGHWAYS	PREVIOUS MILEAGE	ADDED MILEAGE	SUBTRACTED MILEAGE	TOTAL	* SCENIC HIGHWAYS
CLASS 1	.000		*	.000	*
CLASS 2	10.730		*	10.730	*
CLASS 3	24.740		*	24.740	*
STATE HWY	12.283	0.002	*	12.285	*
TOTAL(no Class 4)	47.753	0.002	*	47.755	*
CLASS 4	14.460		*	14.460	*

PART II - INFORMATION & DESCRIPTION OF CHANGES SHOWN ABOVE.

(1) NEW HIGHWAYS: Please attach Selectmen's "Certificate of Completion".

(2) DISCONTINUED: Please attach SIGNED copy of proceedings(minutes of meeting).

(3) RECLASSIFIED/REMEASURED: Please attach SIGNED copy of proceedings(minutes of meetings).
Due to reconstruction and relocation BRF 013-4(10) US 2

(4) SCENIC HIGHWAYS: Please attach copy of order designating/discontinuing Scenic Highways.

PART II - CHECK BOX IF NO CHANGES IN MILEAGES AND SIGN BELOW

PART III - SIGNATURES - PLEASE SIGN.

SELECTMEN/ALDERMEN/TRUSTEES
SIGNATURES:

John A. Hoopes
M. Selig
James Cobley
D. Jones

CLERK SIGNATURE:

Eunice H. Ferris

DATE FILED *Jan. 25-1993*

Please sign ORIGINAL & return for Transportation signature.

AGENCY OF TRANSPORTATION APPROVAL: Signed copy will be returned to T/C/V Clerk.

APPROVED:

[Signature]
Representative, Agency of Transportation

DATE: *2/5/93*

STATE OF VERMONT AGENCY OF TRANSPORTATION

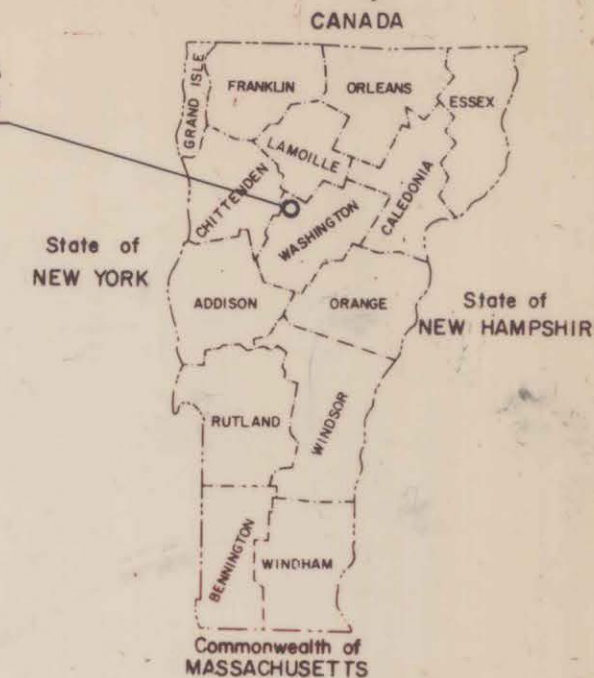
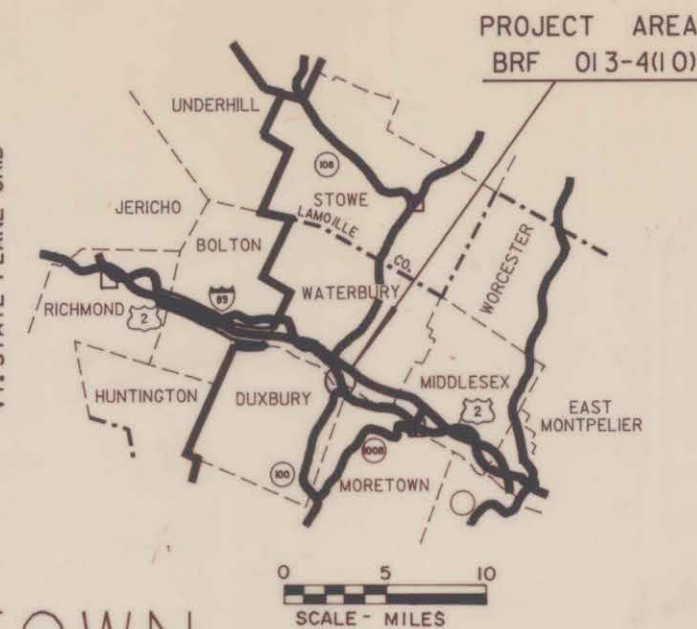
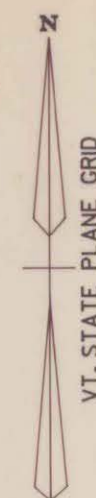


PROPOSED IMPROVEMENT TOWNS OF WATERBURY-DUXBURY-MORETOWN COUNTY OF WASHINGTON U.S. ROUTE 2 (FAP)

BEGINNING AT A POINT ON U.S. ROUTE 2 (MAIN ST.), IN THE VILLAGE OF WATERBURY, WHICH IS LOCATED APPROXIMATELY .089 MILES NORTHERLY OF THE WATERBURY-DUXBURY TOWN LINE AND EXTENDING EASTERLY AND SOUTHERLY FOR APPROXIMATELY 0.263 MILES, ENDING AT A POINT ON EXISTING U.S. ROUTE 2 IN THE TOWN OF MORETOWN.

WORK TO BE PERFORMED UNDER THIS PROJECT INCLUDES REMOVAL AND REPLACEMENT OF THE EXISTING BRIDGE, AS WELL AS GRADING, DRAINAGE, SUBBASE AND PAVEMENT OF ROADWAY APPROACH SECTIONS.

LENGTH OF ROADWAY 1110.38 FT. 0.210 MILES
LENGTH OF BRIDGE 277.45 FT. 0.053 MILES
LENGTH OF PROJECT 1387.83 FT. 0.263 MILES



TRAFFIC DATA

1991 ADT = 5740
1991 DHV = 755
2011 ADT = 7910
2011 DHV = 965
D = 51%
T = 2%
V = 40 MPH
18 KIP ESAL 1,461,000

RECORD PLANS

CONTRACTOR PARK CONSTRUCTION CORP.
FITZWILLIAM, N.H.
RESIDENT ENGINEER JACQUES G. COUTURE
CONSTRUCTION BEGAN 7/15/91
CONSTRUCTION COMPLETED 10/29/92
RECORD PLANS BY SHAUNA LASKOWSKI

I hereby certify that all the construction required by this set of drawings has been accomplished as indicated herein.

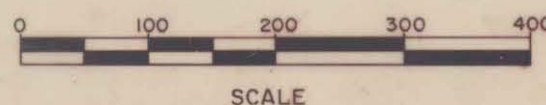
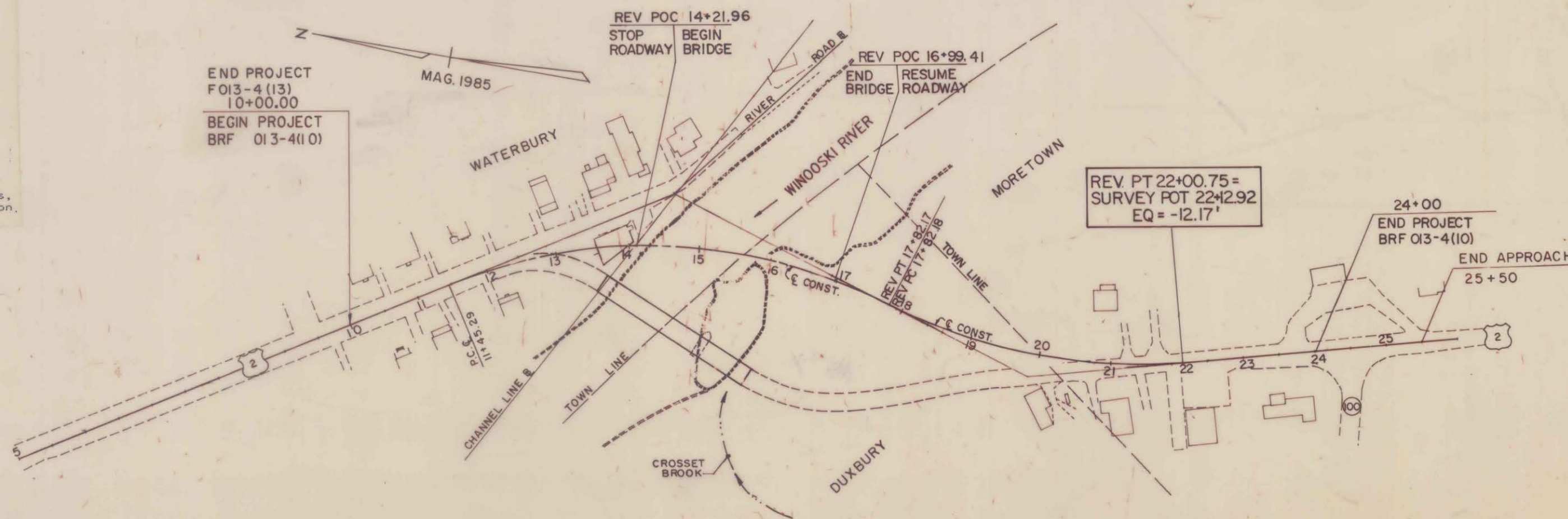
By Jacques G. Couture Resident Engineer
Date 12/21/94

NOTE: Any further information concerning final quantities, amounts or other details relative to this project may be found on microfilm in Central Files.

CONVENTIONAL SIGNS

- COUNTY LINE
- TOWN LINE
- LIMITS OF ACCESS
- POINT OF ACCESS
- FENCE LINE
- STONE WALL
- TRAVELED WAY
- GUARD RAIL
- RAILROAD
- SURVEY LINE
- CULVERT
- POWER POLE
- TELEPHONE POLE
- TREES
- CONTROL OF ACCESS
- PROPERTY LINE
- R.O.W TAKING LINE
- SLOPE RIGHTS
- TOP OF CUT
- TOE OF SLOPE

DATUM
VERTICAL NGVD 1929
HORIZONTAL N/A



THESE PLANS ARE SUBJECT TO SUCH ENGINEERING CHANGES AS MAY BE REQUIRED BY THE FEDERAL HIGHWAY ADMINISTRATION OR THE CHIEF ENGINEER.
CONSTRUCTION IS TO BE CARRIED ON IN ACCORDANCE WITH THESE PLANS AND THE STANDARD SPECIFICATIONS FOR CONSTRUCTION DATED 1990, AS APPROVED BY THE FEDERAL HIGHWAY ADMINISTRATION ON MARCH 15, 1990 FOR USE ON THIS PROJECT INCLUDING ALL SUBSEQUENT REVISIONS AND SUCH REVISED SPECIFICATIONS AND SPECIAL PROVISIONS AS ARE INCORPORATED IN THESE PLANS.

SUBMITTED BY ORDER OF THE STATE TRANSPORTATION BOARD

APPROVED Stephen D. MacArthur DATE 2/16/91
DIRECTOR OF PLANNING & PRECONSTRUCTION

DEPARTMENT OF TRANSPORTATION
FEDERAL HIGHWAY ADMINISTRATION

APPROVED George A. Jensen DATE 3/27/91
DISTRICT DIVISION ADMINISTRATOR

PROJECT BRF No. 013-4(10)

SHEET 1 OF 162 SHEETS

INDEX OF SHEETS

1	TITLE SHEET
2	INDEX OF SHEETS
3-4	TYPICAL SHEET
5	GRADING AND CURB TIES
6	BAFFLE DETAIL
7-9	QUANTITY SHEETS
10	ITEM DETAIL AND DRAINAGE SHEET
11-12	GRADE AND EARTHWORK SHEET
13	BLANK
14-22	R. O. W. DETAIL SHEETS
23-25	BLANKS
26-31	PLAN AND PROFILE SHEETS
32	SURVEY BASELINE TIES
33-36	TRAFFIC SIGN AND PAVEMENT MARKING SHEETS
37	MAILBOX DETAIL SHEET
38-41	UTILITIES SHEETS
42	STREAM GAGE NOTES AND DETAILS
43-75	BRIDGE 100 SERIES U. S. ROUTE 2 OVER THE WINOOSKI RIVER
76-78	BLANKS
79-98	MAIN LINE CROSS SECTION SHEETS
99-100	BLANK
101-104	RIVER ROAD CROSS SECTION SHEETS
105	BLANK
106-112	CHANNEL LINE CROSS SECTION SHEETS

STANDARDS

113	B-5	SLOPE GRADING, EMBANKMENTS, MUCK	12-06-71
114	B-11	UNDERDRAIN - ROCK SUBGRADE, SLOPE STABILIZ.	12-12-74 R
115	B-12	SIDE ROAD INTERSECTION, DEPRESSED RAMP	12-14-71
116	B-13	DRIVE INTERSECTIONS DEPRESSED RAMP	12-14-71
117	B-71	RESIDENTIAL AND COMMERCIAL DRIVES	07-23-80 R
118	B-71A	RESIDENTIAL DRIVES	03-07-90 R
119	C-1	VERTICAL GRANITE CURB	10-25-85 R
120	C-3	SIDEWALK RAMPS	08-18-89 R
121	D-1	PRECAST RCP DROP INLET	12-06-71
122	D-2	UNDERDRAIN & CARRIER PIPE CONSTRUCTION DETAILS	10-30-85 R
123	D-3	TREATED GUTTERS	04-02-86
124	D-4	UNDERDRAIN FLUSHING BASIN	10-30-85 R
125	D-6	REINF. CONCRETE DROP INLET W/GRATE (DITCHES)	04-04-73
126	D-8	REINFORCED CONCRETE DROP INLET WITH PRECAST COVER & GRATE (BOTTOM SECTION)	12-06-71
127	D-9	REINFORCED CONCRETE DROP INLET TOPS	12-06-71
128	D-11	GRATES & COVERS (TYPE A)	08-24-81 R
129	D-13	REINFORCED CONCRETE MANHOLE & CATCH BASIN WITH CAST IRON GRATE	08-10-81 R
130	D-15	CAST IRON GRATE WITH FRAME, TYPE D	10-30-85 R
		CAST IRON GRATE WITH FRAME, TYPE E	
131	D-16	CAST IRON GRATE, TYPE B	10-30-85 R
132	D-20	HIGHWAY CROSSING FOR UNDERGROUND UTILITIES	10-30-85 R
133	E-9	UTILITY WORK ZONE	02-03-86 R
134	E-100	CONSTRUCTION APPROACH SIGNS	05-26-89 R
135	E-101	CONSTRUCTION SIGN DETAILS	10-30-87
136	E-102	CONSTRUCTION SIGN DETAILS	01-23-89 R
137	E-106	TRAFFIC CONTROL, MISC. DETAILS	01-23-89 R
138	E-107	DELINEATION, BARRICADES AND DETOURS FOR CONSTRUCTION AREAS	04-29-88 R
139	E-107A	BREAKAWAY BARRICADE DETAILS	09-10-87
140	E-110	MAJOR MAINTENANCE OPERATION LANE CLOSURE	03-01-88 R
141	E-121	STANDARD SIGN PLACEMENT - CONVENTIONAL ROAD	01-23-89
142	E-123	GUIDE SIGN PLACEMENT - MISCELLANEOUS DETAILS	01-23-89 R
143	E-124	TOWN LINE SIGNS	01-23-89
144	E-125	TRAVEL INFORMATION SIGNS	08-22-88
145	E-127	ROUTE MARKINGS AT RURAL INTERSECTIONS	12-18-89
146	E-136	U. S. AND STATE ROUTE MARKER SIGN DETAILS	04-29-88 R
147	E-141	REGULATORY SIGN DETAILS	10-30-87
148	E-142	REGULATORY SIGN DETAILS	10-30-87
149	E-143	REGULATORY SIGN DETAILS	10-30-87
150	E-151	WARNING SIGN DETAILS	10-30-87
151	E-152	WARNING SIGN DETAILS	10-30-87
152	E-160	FLANGED CHANNEL STEEL SIGN POST DETAIL	03-01-88 R
153	E-162	TUBULAR ALUMINUM SIGN POST	03-01-88 R
154	E-191	PAVEMENT MARKING DETAILS	01-23-89 R
155	G-1	STEEL BEAM GUARDRAIL	10-31-85 R
156	G-1D	STEEL BEAM GUARDRAIL	10-31-85 R
157	G-4	GUIDE POSTS	10-31-85 R
		WOOD MARKER POSTS	
158	G-14	BREAKAWAY CABLE TERMINAL W/WOOD POSTS	11-01-88 R
159	J-1	PROJECT AND BOUNDARY MARKERS	06-27-80
160	J-5	BRACING OF TREES	12-19-72 R
161	T-1	TEMPORARY EROSION CONTROL DETAILS	12-07-76 R
162	T-2	TEMPORARY EROSION CONTROL DETAILS	07-05-72

DATUM
 VERTICAL _____
 HORIZONTAL _____

SURVEYED BY	NYE	DATE	2/85
DRAWN BY	NUTTER	DATE	12/90
SQUAD LEADER	SHERIDAN		
DESIGN FILE NO.	78F178. DGN		
PRF FILE	78F178 IND. PRF	DATE PLOTTED	28-FEB-1991
PROJ. NAME	WATERBURY - DUXBURY - MORETOWN		
PROJ. NO.	BRF 013-4(10)		
SHEET	2	OF	162 SHEETS

Construct Portland Cem. Conc. Walk
 L+ 0' R+
 11+04-11+05 (4' WIDE) 10+50-5+5 (4' WIDE)
 11+79-11+80 (4.5' WIDE) 11+12 (4' WIDE)
 (Paid as Port. Cem. Conc. Sidewalk, 5")

Portland Cem. Conc. Sidewalk 5 inch
 9+61-12+00 RT 10+00-12+05 LT (4' wide) (6' wide)
 10+67-11+27 LT 11+26
 9+13-12+00 RT 10+00-11+92 RT (4' wide) (5' wide)
 11+41-11+41-12+00 LT
 9+80-10+00-10+71 RT 10+72
 11+92-12+05 RT
 *Transition from 4' Walk w/ Grass Strip to 5' Walk @ Curb
 PORTLAND CEMENT CONCRETE SIDEWALK, 8 INCH
 9+50-9+61 LT

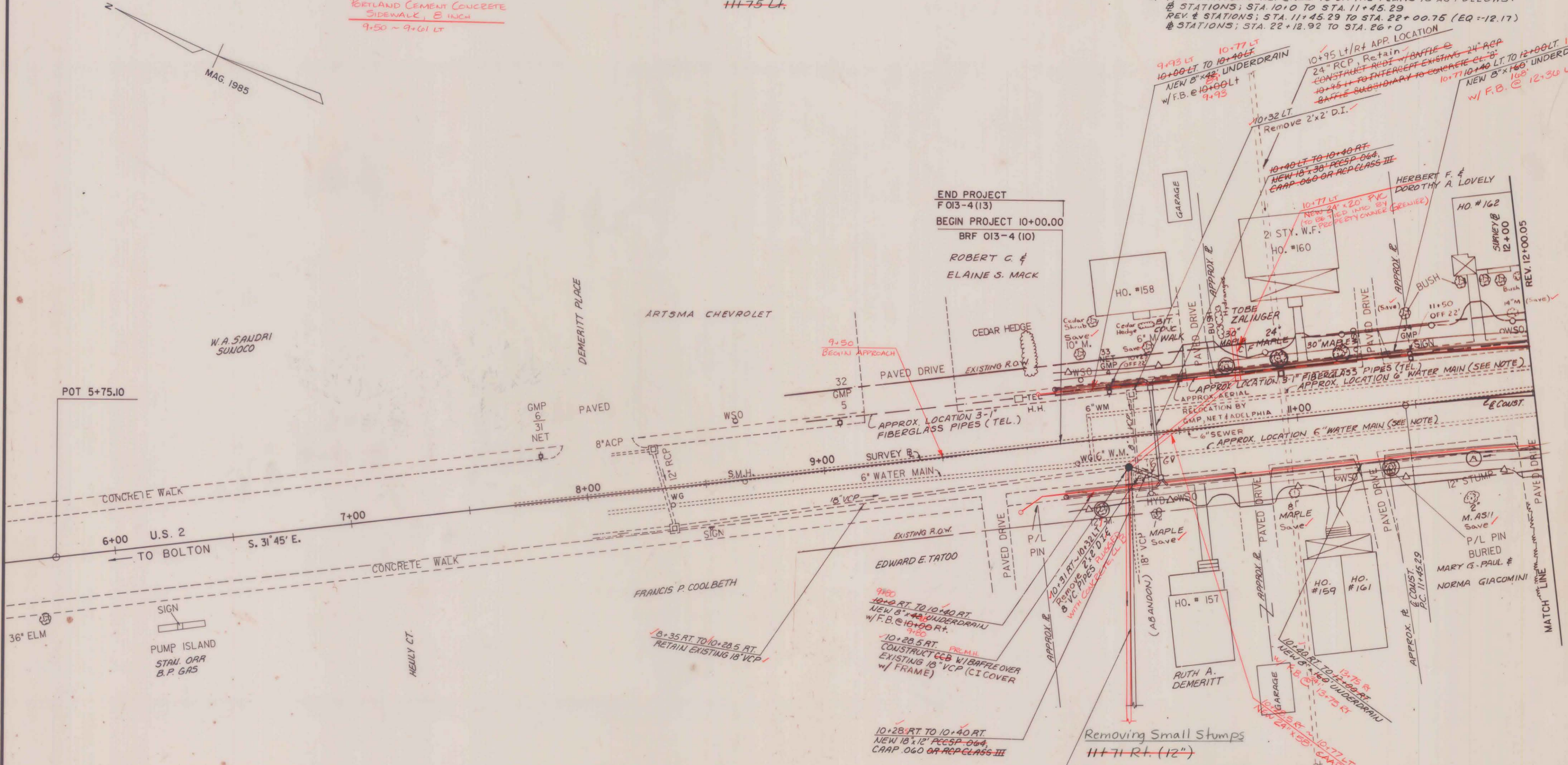
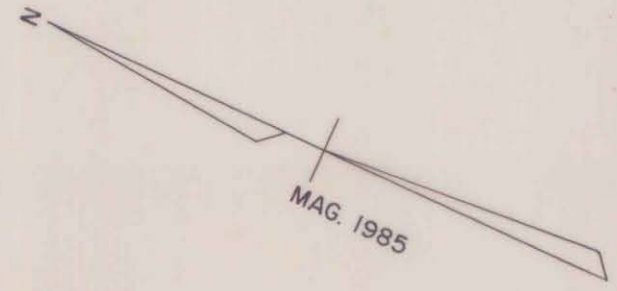
Vertical Granite Curb
 9+62-10+00 ~ 10+53 LT 10+50
 10+67-11+27 LT 11+26
 11+41-11+41-12+00 LT
 9+80-10+00-10+71 RT 10+72
 10+90-10+87-11+21 RT 11+19
 11+36-11+35-11+91 RT 11+87
 9+46-9+64 ET

Construct Drive
 10+64-10+60 LT 12' WIDE, PAVED
 11+34 LT 12' WIDE, PAVED
 10+81 10+79 RT 14' WIDE, PAVED
 11+28 RT 12' WIDE, PAVED
 11+96 11+98 RT 12' WIDE, PAVED
 9+73 RT 10' WIDE, PAVED

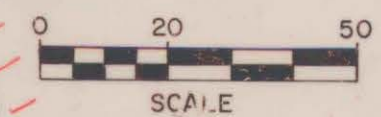
Relocate Mail box - Single Support
 10+50 RT
 11+75 LT

SOLID ROCK EXCAVATION
 9+50 ~ 12+00.05
 (EXISTING ROUTE 2)

NOTES:
 1. THE LOCATION OF THE 6 INCH WATER MAINS SHOWN ON THE PLANS FROM STATION 9+80 TO STATION 12+00.05 (REV. E) IS APPROXIMATE ONLY AND MUST BE VERIFIED IN THE FIELD DURING CONSTRUCTION.
 2. FIBER OPTIC CABLE TO BE ABANDONED IN PLACE.
 3. THE STATIONS REFERRED TO ON THE PLANS IS AS FOLLOWS:
 @ STATIONS; STA. 10+0 TO STA. 11+45.29
 REV. E STATIONS; STA. 11+45.29 TO STA. 22+00.75 (EQ. -12.17)
 @ STATIONS; STA. 22+12.92 TO STA. 26+0

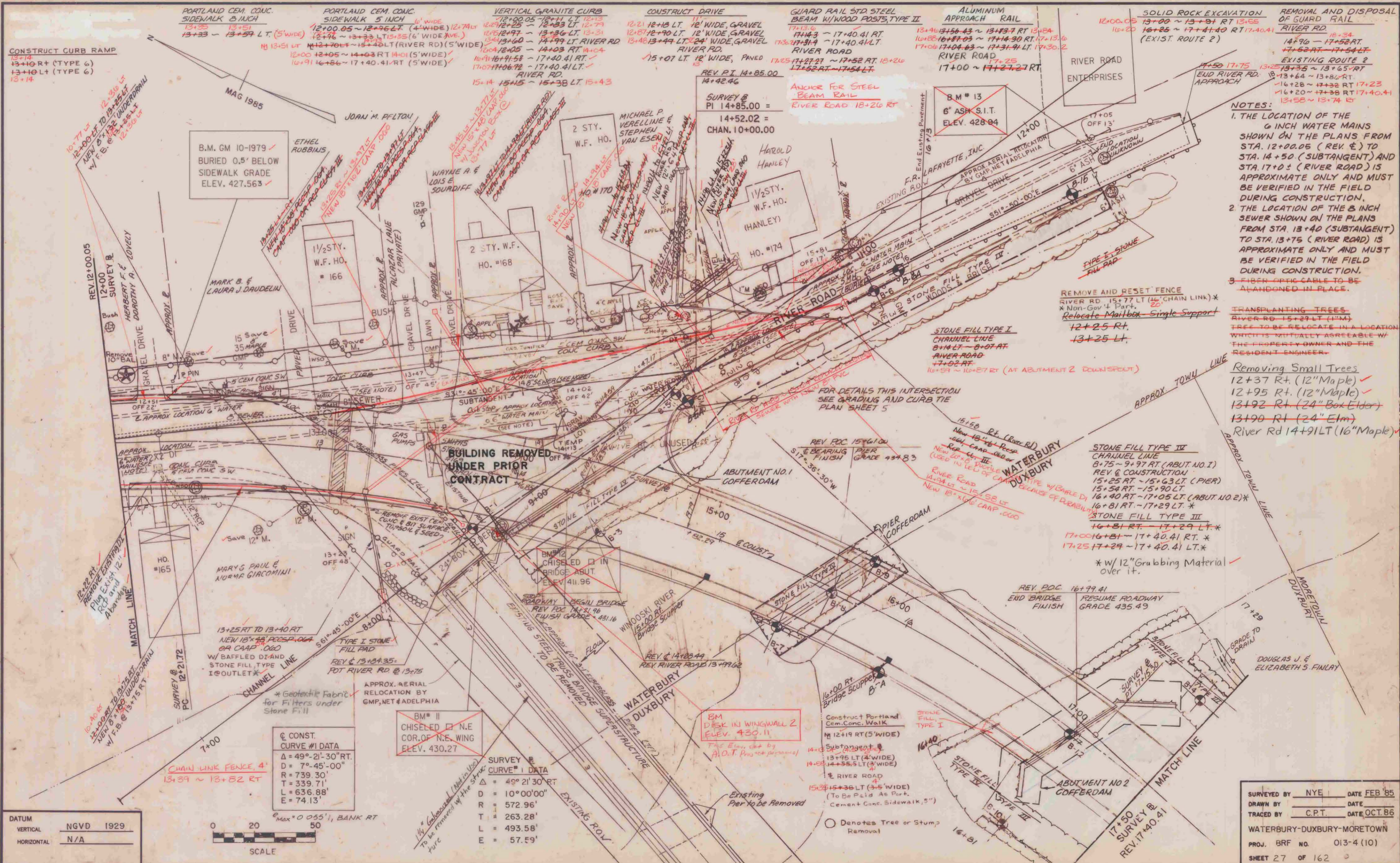


DATUM	NGVD 1929
VERTICAL	
HORIZONTAL	N/A



SURVEYED BY NYE DATE FEB. 85
 DRAWN BY DATE
 TRACED BY C.P.T. DATE OCT. 86
 WATERBURY-DUXBURY-MORETOWN
 PROJ. BR. NO. 013-4(10)
 SHEET 26 OF 162

BRUNING 534283



CONSTRUCT CURB RAMP
 13+14
 13+10 RT (TYPE 6)
 13+10 LT (TYPE 6)
 13+14

PORTLAND CEM. CONC. SIDEWALK 5 INCH
 13+25 ~ 13+51
 13+33 ~ 13+59 LT (5' WIDE)

PORTLAND CEM. CONC. SIDEWALK 5 INCH
 12+00.05 ~ 12+96.27 (4' WIDE)
 12+96 ~ 13+33 LT (5' WIDE)
 12+00 ~ 12+05 ~ 14+03 RT (5' WIDE)
 16+91 ~ 16+86 ~ 17+40.41 RT (5' WIDE)

VERTICAL GRANITE CURB
 12+00.05 ~ 12+11 LT 12+12
 12+12 ~ 12+25 ~ 12+33 LT 12+31
 12+31 ~ 12+36 LT 12+31
 12+36 ~ 14+03 RT RIVER RD
 12+04 ~ 12+05 ~ 14+03 RT 14+04
 16+91 ~ 16+91.58 ~ 17+40.41 RT
 17+07 ~ 17+06.72 ~ 17+40.41 LT
 RIVER RD.
 15+14 15+15 ~ 15+38 LT 15+43

CONSTRUCT DRIVE
 12+21 12+13 LT 12' WIDE, GRAVEL
 12+27 12+90 LT 12' WIDE, GRAVEL
 12+38 13+49 LT 24' WIDE, GRAVEL RIVER RD.
 15+07 LT 12' WIDE, PAVED

GUARD RAIL STD STEEL BEAM W/ WOOD POSTS, TYPE II
 17+13.6
 17+14.3 ~ 17+40.41 RT
 17+36.47 31.9 ~ 17+40.41 LT RIVER ROAD
 RIVER ROAD
 17+25 17+27 ~ 17+52 RT 18+26
 17+52 RT ~ 17+54 LT

ALUMINUM APPROACH RAIL
 13+41 13+56.43 ~ 13+57.7 RT 13+54
 16+88 16+87.03 ~ 17+14.90 RT 17+13.6
 17+06 17+04.63 ~ 17+31.41 LT 17+30.2
 RIVER ROAD
 17+25
 17+00 ~ 17+27.27 RT

SOLID ROCK EXCAVATION OF GUARD RAIL
 12+00.05 13+00 ~ 13+91 RT 13+85
 16+20 16+25 ~ 17+41.40 RT 17+40.41
 (EXIST. ROUTE 2)

REMOVAL AND DISPOSAL OF GUARD RAIL
 RIVER RD.
 14+96 ~ 17+52 RT
 17+52 RT ~ 17+54 LT
 EXISTING ROUTE 2
 13+35 ~ 13+65 RT
 13+64 ~ 13+84 RT
 16+28 ~ 17+32 RT 17+23
 16+20 ~ 17+38 RT 17+40.41
 13+58 ~ 13+74 LT

NOTES:
 1. THE LOCATION OF THE 6 INCH WATER MAINS SHOWN ON THE PLANS FROM STA. 12+00.05 (REV. E) TO STA. 14+50 (SUBTANGENT) AND STA. 17+05 (RIVER ROAD) IS APPROXIMATE ONLY AND MUST BE VERIFIED IN THE FIELD DURING CONSTRUCTION.
 2. THE LOCATION OF THE 8 INCH SEWER SHOWN ON THE PLANS FROM STA. 13+40 (SUBTANGENT) TO STA. 13+75 (RIVER ROAD) IS APPROXIMATE ONLY AND MUST BE VERIFIED IN THE FIELD DURING CONSTRUCTION.
 3. FIBER OPTIC CABLE TO BE ABANDONED IN PLACE.

TRANSPLANTING TREES
 RIVER RD 15+29 LT (1" M)
 TREE TO BE RELOCATE IN A LOCATION WHICH IS MUTUALLY AGREABLE W/ THE PROPERTY OWNER AND THE RESIDENT ENGINEER.

Removing Small Trees
 12+37 RT (12" Maple) ✓
 12+95 RT (12" Maple) ✓
 13+92 RT (24" Box Elder) ✓
 13+90 RT (24" Elm) ✓
 River Rd 14+91 LT (16" Maple) ✓

B.M. GM 10-1979
 BURIED 0.5' BELOW SIDEWALK GRADE
 ELEV. 427.563

REV. P.I. 14+85.00
 14+42.46
 SURVEY B
 P.I. 14+85.00 =
 14+52.02 =
 CHAN. 10+00.00

B.M. #13
 6" ASH S.I.T.
 ELEV. 428.94

REMOVE AND RESET FENCE
 RIVER RD 15+77 LT (CHAIN LINK) *
 * Non-Gov. Part.
 Relocate Mailbox Single Support
 12+25 RT.
 13+25 LT.

STONE FILL TYPE I
 CHANNEL LINE
 8+14 LT - 8+07 RT
 RIVER ROAD
 7+02 RT
 16+59 ~ 16+87 RT (AT ABUTMENT 2 DOWNSPUT)

STONE FILL TYPE III
 CHANNEL LINE
 8+75 ~ 9+97 RT (ABUT. NO. 1)
 REV. & CONSTRUCTION
 15+25 RT ~ 15+63 LT (PIER)
 15+54 RT ~ 15+90 LT
 16+40 RT ~ 17+05 LT (ABUT. NO. 2) *
 16+81 RT ~ 17+29 LT. *
 * w/ 12" Grabbing Material over it.

REV. P.O.C. 16+99.41
 END BRIDGE FINISH
 RESUME ROADWAY GRADE 435.49

CONST. CURVE #1 DATA

Δ	= 49° 21' 30" RT.
D	= 7° 45' 00"
R	= 739.30'
T	= 339.71'
L	= 636.88'
E	= 74.13'

SURVEY B CURVE #1 DATA

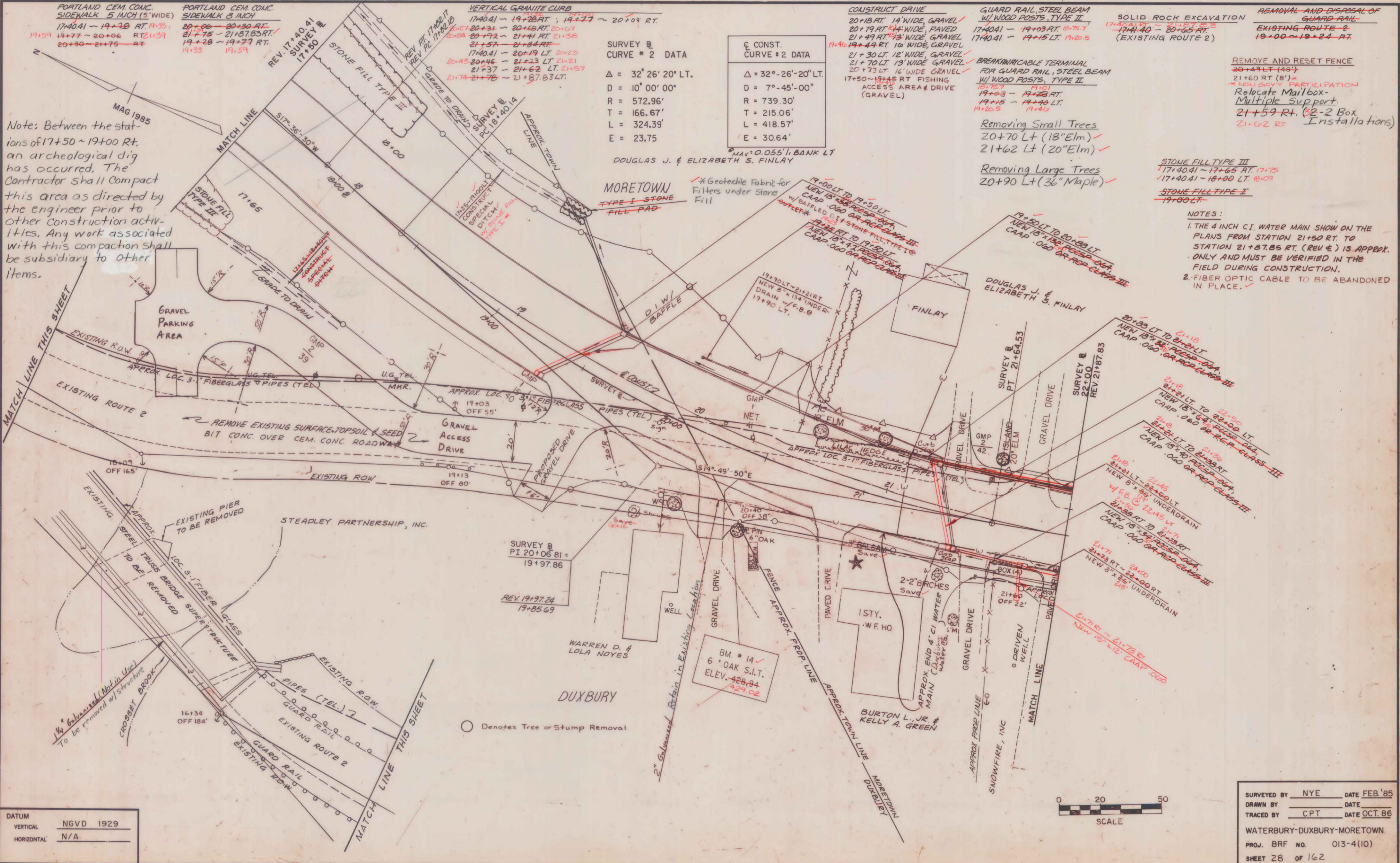
Δ	= 49° 21' 30" RT
D	= 10° 00' 00"
R	= 572.96'
T	= 263.28'
L	= 493.58'
E	= 57.59'

DATUM

VERTICAL	NGVD 1929
HORIZONTAL	N/A



SURVEYED BY NYE DATE FEB '85
 DRAWN BY DATE
 TRACED BY C.P.T. DATE OCT '86
 WATERBURY-DUXBURY-MORETOWN
 PROJ. BRP NO. 013-4 (10)
 SHEET 27 OF 162



Note: Between the stations of 17+50 ~ 19+00 RT, an archeological dig has occurred. The Contractor shall Compact this area as directed by the engineer prior to other construction activities. Any work associated with this compaction shall be subsidiary to other items.

DATUM	NGVD 1929
VERTICAL	N/A
HORIZONTAL	N/A



SURVEYED BY NYE DATE FEB. '85
 DRAWN BY DATE
 TRACED BY CPT DATE OCT. '86
 WATERBURY-DUXBURY-MORETOWN
 PROJ. BR# NO. 013-4(10)
 SHEET 28 OF 162

PORTLAND CEM. CONC. SIDEWALK 5 INCH (5' WIDE)
 17+00.41 ~ 19+28 RT. 19.33
 19+59 19+77 ~ 20+06 RT. 21.39
 20+30 ~ 21+75 RT.

PORTLAND CEM. CONC. SIDEWALK 3 INCH
 20+06 ~ 20+30 RT.
 21+75 ~ 21+87.83 RT.
 19+28 ~ 19+77 RT.
 19.33 19.59

VERTICAL GRANITE CURB
 17+00.41 ~ 19+28 RT. ; 19+77 ~ 20+09 RT.
 19+28 ~ 20+31 RT. 20.17
 20+31 ~ 21+41 RT. 21.38
 21+41 ~ 21+84 RT.
 17+00.41 ~ 20+19 LT. 20.23
 20+19 ~ 21+23 LT. 21.21
 21+23 ~ 21+62 LT. 21.57
 21+62 ~ 21+87.83 LT.

SURVEY @
 CURVE # 2 DATA
 $\Delta = 32^\circ 26' 20''$ LT.
 $D = 10^\circ 00' 00''$
 $R = 572.96'$
 $T = 166.67'$
 $L = 324.39'$
 $E = 23.75$

CONST. CURVE # 2 DATA
 $\Delta = 32^\circ - 26' - 20''$ LT.
 $D = 7^\circ - 45' - 00''$
 $R = 739.30'$
 $T = 215.06'$
 $L = 418.57'$
 $E = 30.64'$

CONSTRUCT DRIVE
 20+18 RT. 14' WIDE GRAVEL
 20+19 RT. 14' WIDE, PAVED
 21+49 RT. 13' WIDE, GRAVEL
 19+40 19+49 RT. 10' WIDE, GRAVEL
 21+30 LT. 12' WIDE, GRAVEL
 21+70 LT. 13' WIDE GRAVEL
 20+33 LT. 16' WIDE GRAVEL
 17+50 ~ 19+45 RT. FISHING ACCESS AREA # DRIVE (GRAVEL)

GUARD RAIL, STEEL BEAM W/ WOOD POSTS, TYPE II
 17+00.41 ~ 19+03 RT. 18.75.7
 17+00.41 ~ 19+15 LT. 19.20.5
 BREAKAWAY CABLE TERMINIAL FOR GUARD RAIL, STEEL BEAM W/ WOOD POSTS, TYPE II
 19+03 ~ 19+28 RT.
 19+15 ~ 19+40 LT.
 19.20.5 19.46

SOLID ROCK EXCAVATION
 17+00.41 ~ 21+87.83
 17+41.40 ~ 20+65 RT. (EXISTING ROUTE 2)

REMOVAL AND DISPOSAL OF GUARD RAIL
 EXISTING ROUTE 2
 19+00 ~ 19+24 RT.

REMOVE AND RESET FENCE
 20+49 LT. (48')
 21+60 RT. (8')
 * NEW GOVT PARTICIPATION
 Relocate Mailbox - Multiple Support.
 21+59 RT. (2-2 Box Installations)
 21+62 RT

STONE FILL TYPE III
 17+00.41 ~ 17+65 RT. 17.75
 17+00.41 ~ 18+00 LT. 18.09

NOTES:
 1. THE 4 INCH C.I. WATER MAIN SHOW ON THE PLANS FROM STATION 21+50 RT. TO STATION 21+87.83 RT. (REV E) IS APPROX. ONLY AND MUST BE VERIFIED IN THE FIELD DURING CONSTRUCTION.
 2. FIBER OPTIC CABLE TO BE ABANDONED IN PLACE.

DOUGLAS J. & ELIZABETH S. FINLAY
 * Geotextile Fabric for Filters under Stone Fill

MORETOWN TYPE I STONE FILL PAD

MATCH LINE THIS SHEET

MATCH LINE THIS SHEET

○ Denotes Tree or Stump Removal

BRUNING 534283

Portland Cem. Conc.
Sidewalk 5 Inch
22+17 22+23 ~ 22+48 RT. 22+46
22+76 22+83 ~ 23+27 RT. 23+31
23+56 23+61 ~ 23+90 RT. 24+28

Vertical Granite Curb
21+87.83 ~ 23+60 LT. 23+58
23+95 23+97 ~ 25+13 LT. 25+04
22+17 22+23 ~ 22+48 RT. 22+46
22+78 ~ 23+31 RT.
23+57 ~ 24+28 RT. 24+30

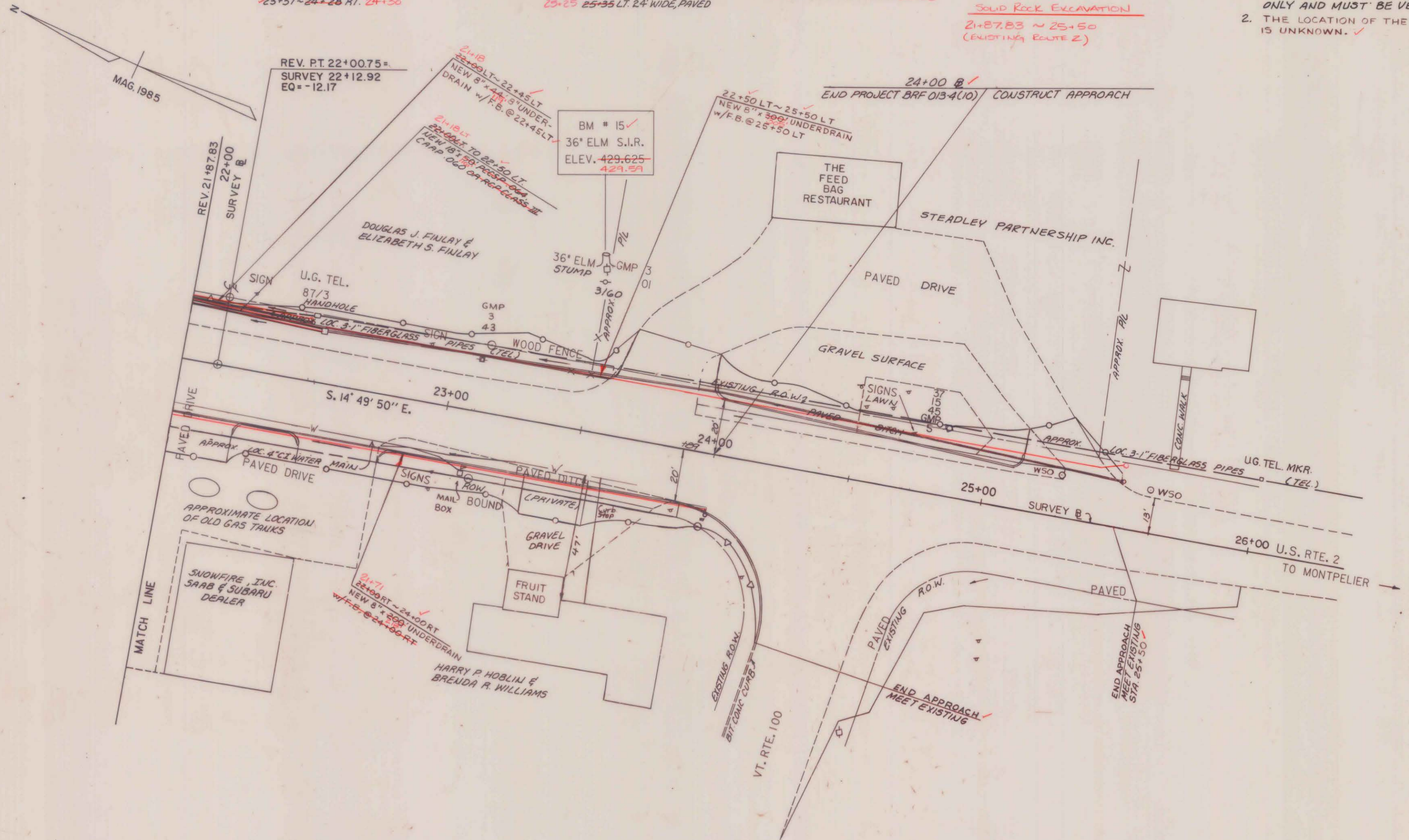
Construct Drive
21+89 RT. 30' WIDE, PAVED
22+62 ~ 22+69 RT. 30' WIDE, PAVED
23+44 RT. 24' WIDE, PAVED
23+75 23+78 LT. 35' WIDE, PAVED
25+25 25+35 LT. 24' WIDE, PAVED

Portland Cem. Conc.
Sidewalk 8 Inch
21+87.83 ~ 22+23 RT. 22+17
22+46 22+48 ~ 22+83 RT. 22+70
23+31 23+27 ~ 23+61 RT. 23+56

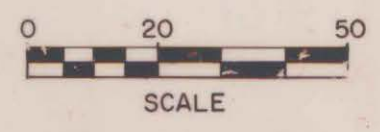
REMOVE AND RESET FENCE
23+43 LT. (16') *
Non-Gov't Part

SOLID ROCK EXCAVATION
21+87.83 ~ 25+50
(EXISTING ROUTE 2)

NOTES:
1. THE 4 INCH C.I. WATER MAIN SHOWN ON THE PLANS FROM STATION 21+87.83 RT. (REV. E) TO STATION 24+30± RT. (E) IS APPROXIMATE ONLY AND MUST BE VERIFIED IN THE FIELD DURING CONSTRUCTION.
2. THE LOCATION OF THE WATER SERVICE TO THE FEED BAG RESTAURANT IS UNKNOWN. ✓



DATUM	
VERTICAL	NGVD 1929
HORIZONTAL	N/A



SURVEYED BY NYE DATE FEB. '85
DRAWN BY DATE
TRACED BY C.P.T. DATE OCT. '86
WATERBURY-DUXBURY-MORETOWN
PROJ. BR# NO. 013-4(10)
SHEET 29 OF 162

BRUNING 554283