

CERTIFICATE OF HIGHWAY MILEAGE

YEAR ENDING FEBRUARY 10, 2008

Fill out form, make and file copy with the Town Clerk, and mail ORIGINAL, before February 20, 2008 to: Vermont Agency of Transportation, Policy and Planning Division, One National Life Drive, Montpelier, VT 05633.

We, the Selectmen or Aldermen or Trustees of CHITTENDEN in RUTLAND County

on an oath state that the mileage of highways, according to Title 19, V.S.A, Sec #305, added 1985, is as follows:

PART I - CHANGES TOTALS - Please fill in and calculate totals.

Table with 6 columns: Town Highways, Previous Mileage, Added Mileage, Subtracted Mileage, Total, Scenic Highways. Rows include Class 1, Class 1 Lane, Class 2, Class 3, State Highway, Class 4, Legal Trail, and Total.

* Mileage for Class 1 Lane, Class 4, and Legal Trail classifications is NOT included in total.

PART II - INFORMATION AND DESCRIPTION OF CHANGES SHOWN ABOVE.

- 1. NEW HIGHWAYS: Please attach Selectmen's "Certificate of Completion and Opening"
2. DISCONTINUED: Please attach SIGNED copy of proceedings (minutes of meeting)
3. RECLASSIFIED/REMEASURED: Please attach SIGNED copy of proceedings (minutes of meeting)
4. SCENIC HIGHWAYS: Please attach a copy of order designating/discontinuing Scenic Highways

See attached

IF THERE ARE NO CHANGES IN MILEAGE: Check box and sign below. []

PART III - SIGNATURES - PLEASE SIGN.

Selectmen/ Aldermen/ Trustees Signatures:

Handwritten signatures of selectmen/aldermen/trustees.

T/C/V Clerk Signature:

Handwritten signature of Roberta Janoski.

Date Filed:

03/03/08

Please sign ORIGINAL and return it for Transportation signature.

AGENCY OF TRANSPORTATION APPROVAL:

Signed copy will be returned to T/C/V Clerk.

APPROVED:

Representative, Agency of Transportation

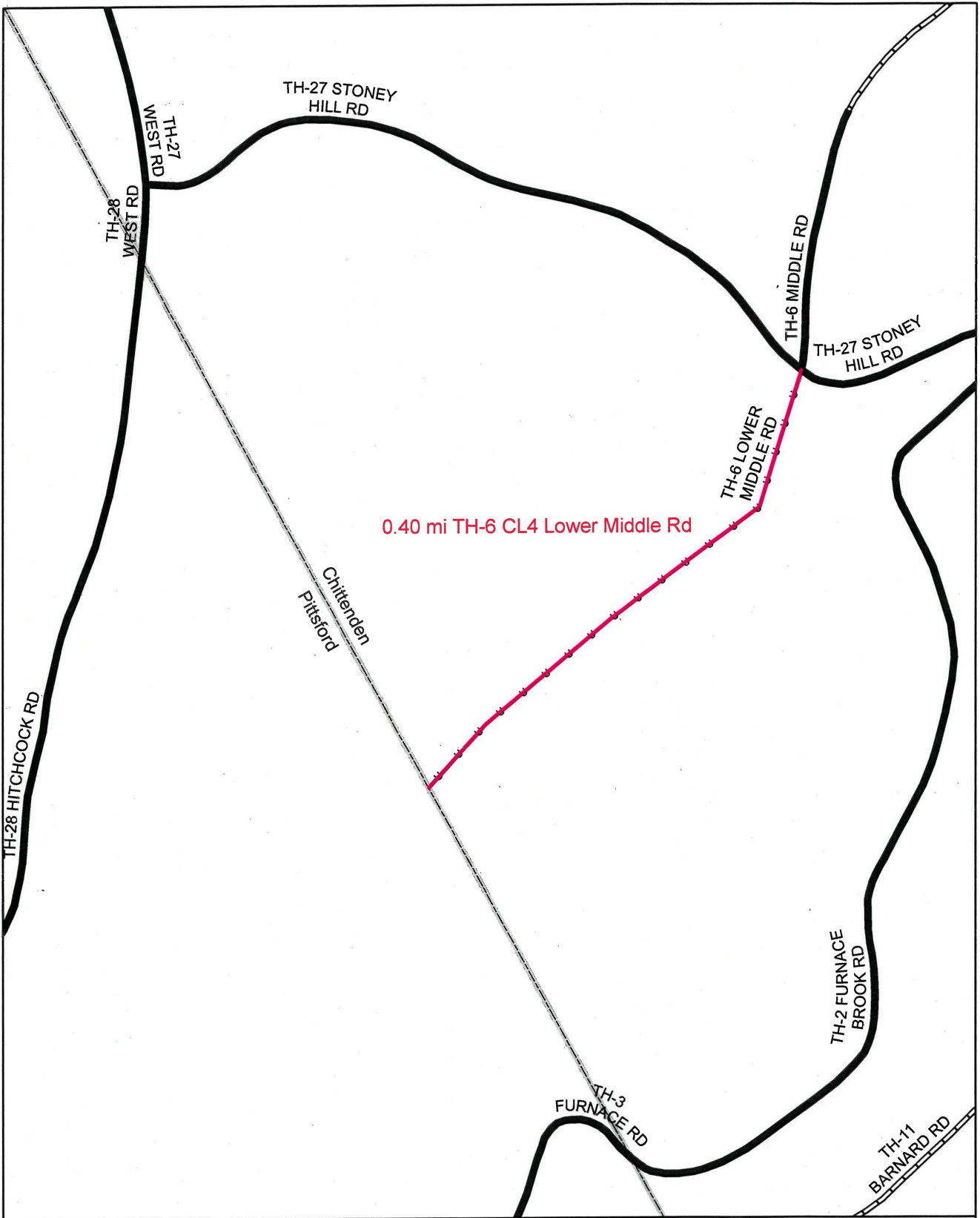
DATE:

4/17/2008

Vermont
Agency of Transportation

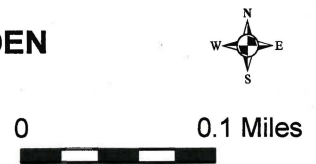
MAR 05 2008

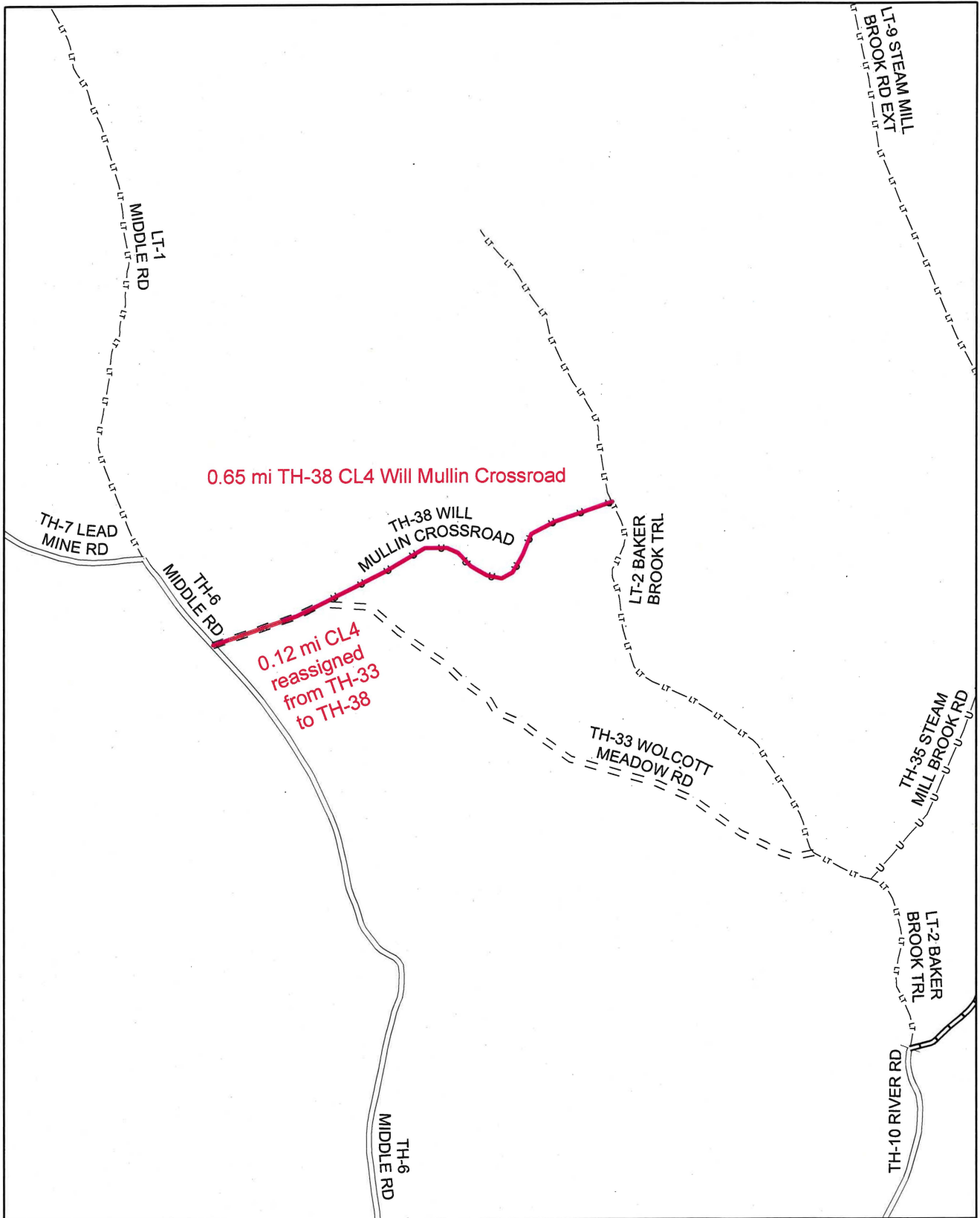
Policy & Planning



Mileage Certificate Change 2008 -- CHITTENDEN

Mapping Unit
 Policy & Planning Division
 Vermont Agency of Transportation -- February 2008





Mileage Certificate Change 2008 -- CHITTENDEN

Mapping Unit
 Policy & Planning Division
 Vermont Agency of Transportation -- February 2008





State of Vermont
Policy & Planning Division-Mapping Unit
1 National Life Drive
Montpelier, VT 05633-5001
<http://www.aot.state.vt.us>

Agency of Transportation

Telephone: 802-828-2109
Fax: 802-828-2334
Email: sara.moulton@state.vt.us

Date: 28 Feb 2008

Town: Chittenden
Chair, Selectboard
c/o Town Clerk

Dear Town Clerk and Selectboard:

Thank you for sending your 2008 Certificate of Highway Mileage. Unfortunately, I need to return it because I need to have the town clerk sign and date it.

If you have any questions, please call me at 802-828-2109 or send e-mail to sara.moulton@state.vt.us

Thank you.

Sincerely,

Sara Moulton

Sara Moulton
Mapping & GIS Specialist



CERTIFICATE OF HIGHWAY MILEAGE

YEAR ENDING FEBRUARY 10, 2008

Fill out form, make and file copy with the Town Clerk, and mail ORIGINAL, before February 20, 2008 to: Vermont Agency of Transportation, Policy and Planning Division, One National Life Drive, Montpelier, VT 05633.

We, the Selectmen or Aldermen or Trustees of CHITTENDEN in RUTLAND County

on an oath state that the mileage of highways, according to Title 19, V.S.A, Sec #305, added 1985, is as follows:

PART I - CHANGES TOTALS - Please fill in and calculate totals.

Table with 6 columns: Town Highways, Previous Mileage, Added Mileage, Subtracted Mileage, Total, Scenic Highways. Rows include Class 1, Class 1 Lane, Class 2, Class 3, State Highway, Class 4, Legal Trail, and Total.

* Mileage for Class 1 Lane, Class 4, and Legal Trail classifications is NOT included in total.

PART II - INFORMATION AND DESCRIPTION OF CHANGES SHOWN ABOVE.

- 1. NEW HIGHWAYS: Please attach Selectmen's "Certificate of Completion and Opening"
2. DISCONTINUED: Please attach SIGNED copy of proceedings (minutes of meeting)
3. RECLASSIFIED/REMEASURED: Please attach SIGNED copy of proceedings (minutes of meeting)
4. SCENIC HIGHWAYS: Please attach a copy of order designating/discontinuing Scenic Highways

no signature

See attached

IF THERE ARE NO CHANGES IN MILEAGE: Check box and sign below. []

PART III - SIGNATURES - PLEASE SIGN.

Selectmen/ Aldermen/ Trustees Signatures:

Handwritten signatures of D.J. [unclear], Stephen A. Howell, Greg [unclear], and B.E. [unclear]

T/C/V Clerk Signature:

Date Filed:

Please sign ORIGINAL and return it for Transportation signature.

AGENCY OF TRANSPORTATION APPROVAL: Signed copy will be returned to T/C/V Clerk.

APPROVED:

Representative, Agency of Transportation

DATE:

CHITTENDEN
2008 CHANGES TO OFFICIAL TOWN HIGHWAY MAP

SUMMARY:

Class 4

Additions:

0.40 mi Lower Middle Road, TH #6

0.65 mi Will Mullen crossroad

1.05 mi total Class 4 additions

Subtractions:

0.12 mi off Wolcott Meadow Road, TH #33

0.93 mi Net addition to Chittenden Highway Map Class 4 mileage

Other

- Correction to Chittenden Town Forest

6:15 PM

SELECTMEN MEETING

February 11, 2008

PRESENT: Robert Bearor, Dave Sargent, Donnaleen Farwell, Wendell Smith, Gary Congdon

GUESTS: Reggi Dubin, John Parker, Roberta Janoski, Abdallah Mejdoub, Elizabeth Wing

The following minutes have not been accepted by the Selectboard:

Minutes of January 28, 2008, approved as amended. Work orders signed.

OLD BUSINESS:

Corrections to Minutes – *Listers (1-14-08)*: Replace the first two sentences with “The town received its 2007 CLA of 70.13, down about ten points from 2006.”

Guests: Add Reggi Dubin.

Transfer Station: Replace the last sentence of the second paragraph with “We need to empty the plastics container.”

Dog Complaints: Replace the last sentence of the first paragraph with “Copies of the complaint letters will be sent to attorney John Liccardi.”

Town Meeting Warning: Replace the first sentence of the second paragraph with “Stubby Smith made a motion to approve the Warning for the fiscal year 2008-2009 as amended.”

Old Roads – Treasurer Roberta Janoski reported that the town received \$2,000 toward a grant of \$5,000 we will receive for work on ancient roads.

South Town Hall – Joan Spaulding has been using the building every Wednesday and wants to continue if it is OK with the board. Donnaleen Farwell explained that it was a church project making things to help people in Africa.

The board offered to give the group two months of free use, as they had for the figure drawing group.

Roads – The board discussed the shortage of salt. This is a national problem.

Bob Bearor contacted Clark's Truck Center which offered the town a 2009 International truck, cab and chassis only, for \$70,515. Bob will get a price for the body.

The Town of Stratton is offering a 1983 grader for \$68,000.

The board discussed junking old equipment while scrap metal prices are high.

Gary Congdon made a motion to purchase a new grader. Seconded by Donnaleen Farwell.

Motion rescinded until a price can be specified.

People are plowing snow from driveways across the road, which is illegal. The board discussed placing an insert about this in the town report and/or advertising in the *Rutland Herald*.

The Vermont Agency of Transportation sent a “Class II Addendum” that says a road must be up to standard as specified in the Manual of Uniform Traffic Control Devices before applying for any grant. The board believes all our roads are up to standard.

Transfer Station – The board discussed replacing the forklift with a new or used one. Gary Congdon will look into what is available.

Planning Commission - Donnaleen Farwell reminded the board that action is needed on the flood map information given the board last December.

BOARD OF SELECTMEN

PAGE 2

February 11, 2008

Tabled until the next meeting. The board will ask Planning Commission Chair Mike Pluta to come to this meeting.

Town Office Addition - Donnaleen Farwell made a motion to set aside \$10,000 from the National Forest account for an addition to the Town Clerk's office. No Second.

This project was ready to go in the past, but we are waiting for security requirements from the Federal Government. They were supposed to be ready but there is no funding, so it is not known when they will be issued.

Proctor Logging – The letter giving the Town of Proctor permission to use our roads for logging their forest lands has been sent.

Highway Map – There was an error in the motion at the last meeting to add old roads. Both roads should be Class IV.

Gary Congdon made a motion to rescind his motion ^{from Jan. 28} on old roads. Seconded by Donnaleen Farwell. Passed unanimously.

Gary Congdon made a motion that the following rights-of-way be added as Class IV roads to the 2008 Agency of Transportation Official Highway Map for the Town of Chittenden:

Lower Middle Road and Will Mullin Cross Road. Seconded by Bob Bearor.

Passed unanimously.

Certificate of Highway Mileage - Reggi Dubin prepared the Certificate of Highway Mileage and will draft a letter to send to the state.

Parcel Maps – Lister Reggi Dubin gave copies of the parcel maps to each board member.

NEW BUSINESS:

Broadband - Elizabeth Wing and Abdallah Mejdoub spoke with the board about bringing broadband service to their home and business at 12 Wildcat Road. The state has grants available but only municipalities can apply. They offered to do the work if the town would allow them to apply. The board agreed as long as there is no cost to the town.

Correspondence – The Vermont Telecommunications Authority sent information on its “Broadband Grant Program for 2007-2008” dated January 18, 2008. Elizabeth Wing will work on this for the town.

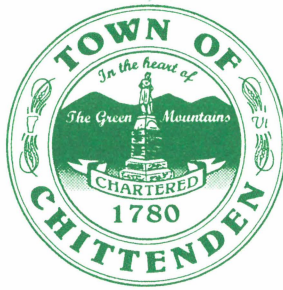
The Vermont Department of Forests, Parks, and Recreation sent a flyer “Trees for Local Communities Grant Announcement. Noted.

The Vermont League of Cities and Towns sent information on its Selectboard Institute scheduled for March 22, 2008. Noted.

VLCT also sent information on “Closing the Digital Divide,” a workshop on providing public broadband services throughout Vermont, scheduled for March 7, 2008. Noted.

Meeting adjourned on motion at 8:10 PM

Allan Arthur – Clerk



February 19, 2008

Vermont Agency of Transportation
Policy and Planning Division
1 National Life Drive, Drawer 33
Montpelier, Vermont 05633-5001

Enclosed please find the following from the Town of Chittenden:

- Certificate of Highway Mileage for the year ending February 10, 2008
- Minutes of the February 11, 2008 meeting at which the Selectboard voted to make the enclosed changes to the General Highway Map for the Town of Chittenden
- Detail for the enclosed changes

Please do not hesitate to contact us if you have any questions.

Thank you very much.

Sincerely,

Roberta Janoski
Town Clerk

RJ/rad
Encl.

Vermont
Agency of Transportation
FEB 20 2008
Policy & Planning Division

CHITTENDEN
2008 CHANGES TO OFFICIAL TOWN HIGHWAY MAP

Class 4 Roads

Lower Middle Road

See “A” on the enclosed highway map.

This old road ran up through much of the State. In Chittenden it ran northeasterly, then northerly from Pittsford on the southwest to Goshen on the north. Exhibit 1 enclosed is a copy of the 1814 survey of the road from the Pittsford line to the south end of what is today the Class 3 portion of Middle Road, which is Town Highway #6. Exhibit 2 is the relevant topo map with a plot of both Exhibit 1 and the continuation of the road into Pittsford.

Length of the Chittenden portion of the road is 0.40 miles, 3 rods wide. It is an extension of Town Highway #6

Will Mullin Crossroad

See “B” on the enclosed highway map.

Exhibit 3 enclosed is an enlargement of a segment of the 1869 Beers map of Chittenden showing this road. The entire length of the crossroad measures 0.65 miles from its westerly terminus at Town Highway #6 to its easterly connection with TH #10.

As you can see on the enclosed 2007 AOT Highway map, this road and the northwest shoulder of TH #33 – the Wolcott Meadow Road – run over the same right of way. The length of the segment shared by the two roads is 0.12 miles.

The Will Mullin Crossroad pre-dates the Wolcott Meadow Road by more than half a century. For various reasons the later road was added to Chittenden’s AOT map before the earlier one. We would like to have the 0.12-mile shared segment reflected in the mileage for the Will Mullin Crossroad – i.e., the earlier highway

Accordingly, the mileage for the Will Mullin Crossroad will be 0.65 miles, three rods wide. Please make it Town Highway #38.

Wolcott Meadow Road, Town Highway #33

See “C” on the enclosed highway map.

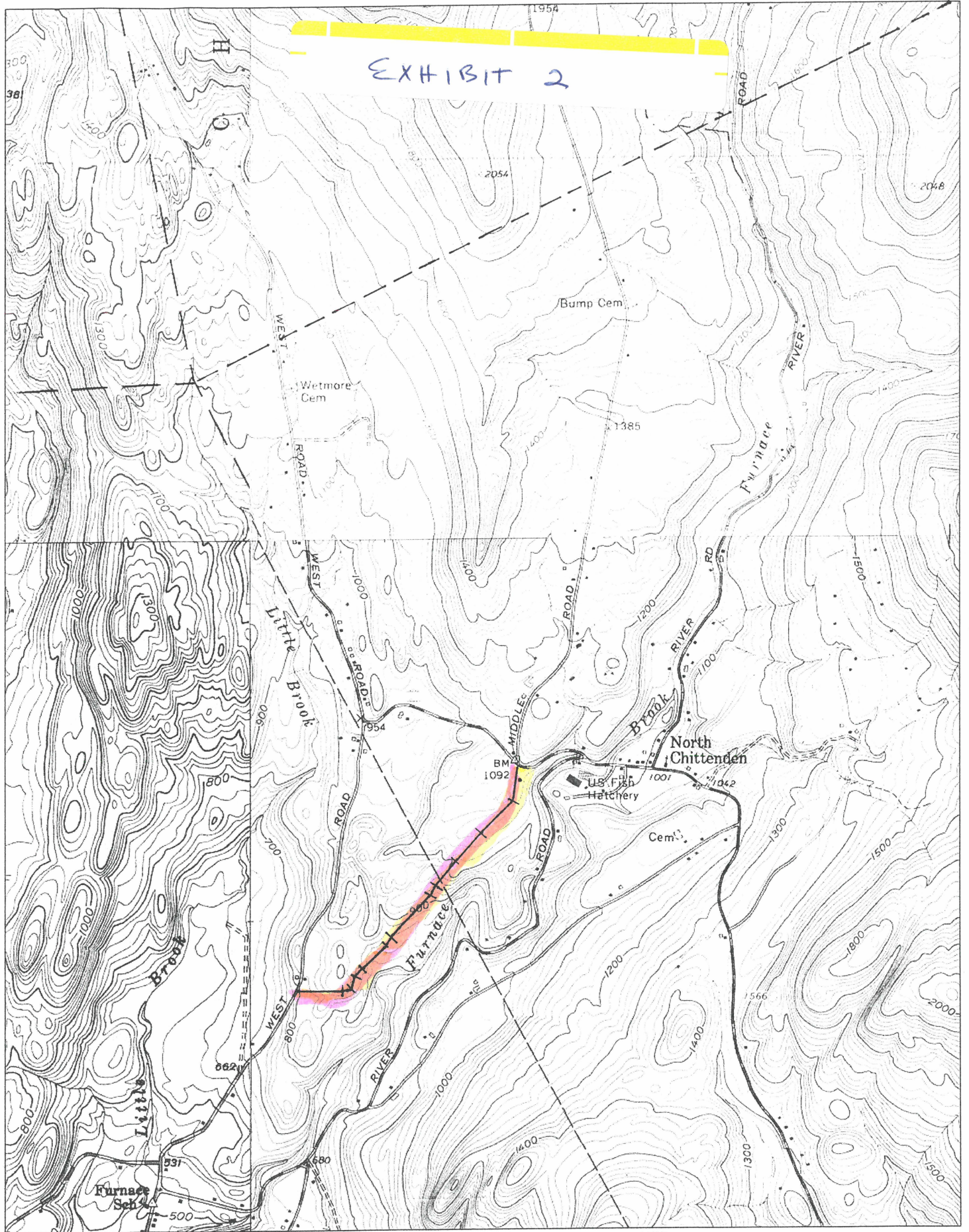
Per the above allocation of .12 miles to the Will Mullin Crossroad, the mileage for TH #33 will be reduced to 0.86 miles.

Other

Chittenden Town Forest

See “D” on the enclosed highway map. A correction was made in 2007 to the Chittenden town woodlot in the northwest corner of the town. Please put the label for this forest parcel on the land designated “Chittenden Town Forest” rather than on the adjacent private land.

Road laid 8 OCT 1814



Pittsford road book, pp. 66, 71

Chittenden Land Reds. 4:339

MILEAGE SUMMARY

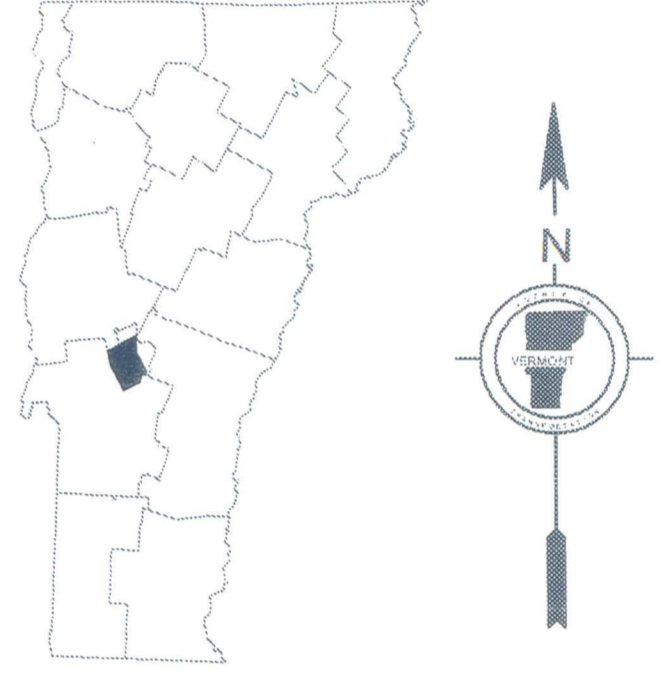
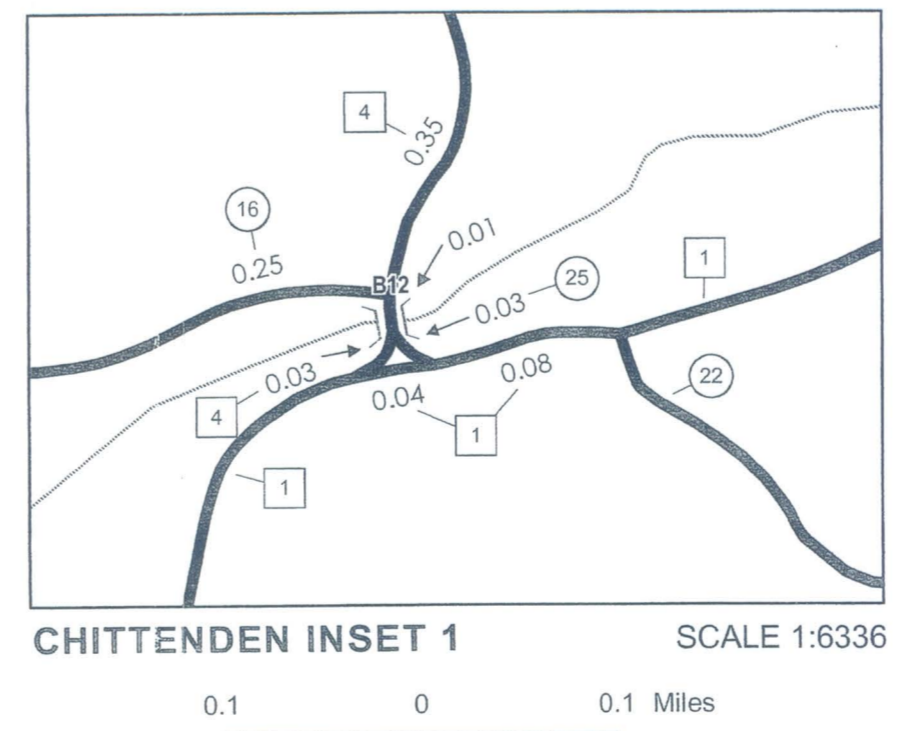
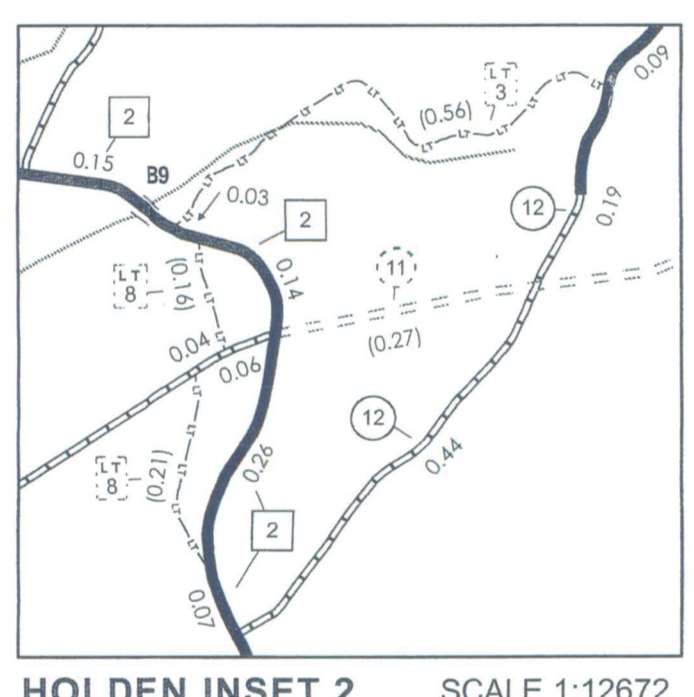
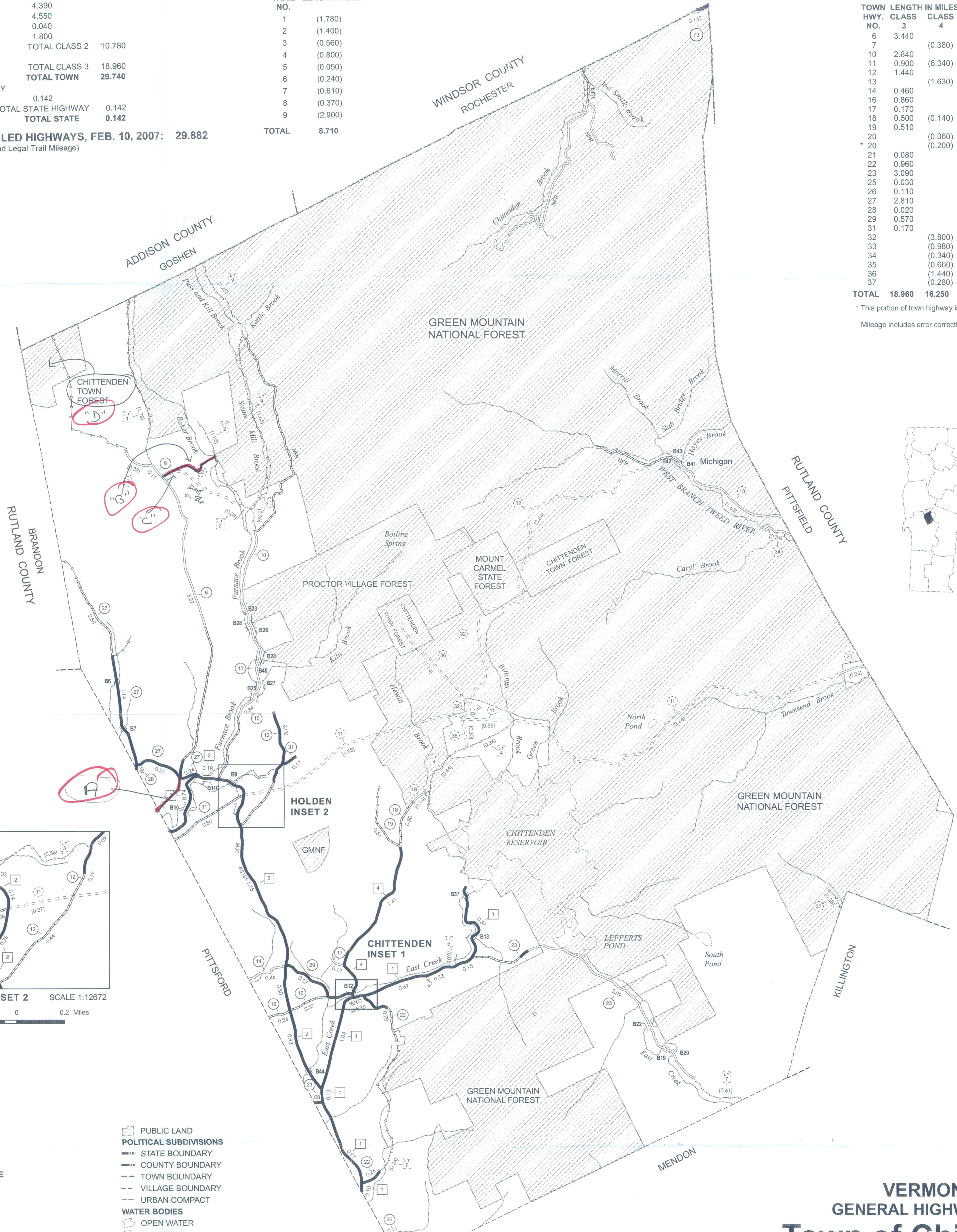
CLASS 2	
TH-1	4.390
TH-2	4.550
TH-3	0.040
TH-4	1.800
TOTAL CLASS 2 10.780	
CLASS 3	
TOTAL CLASS 3 18.960	
TOTAL TOWN 29.740	
STATE HIGHWAY	
VT-73	0.142
TOTAL STATE HIGHWAY 0.142	
TOTAL STATE 0.142	

TOTAL, TRAVELED HIGHWAYS, FEB. 10, 2007: 29.882
(Excludes Class 4 and Legal Trail Mileage)

LEGAL TRAIL NO.	LENGTH IN MILES
1	(1.780)
2	(1.400)
3	(0.560)
4	(0.800)
5	(0.050)
6	(0.240)
7	(0.610)
8	(0.370)
9	(2.900)
TOTAL	8.710

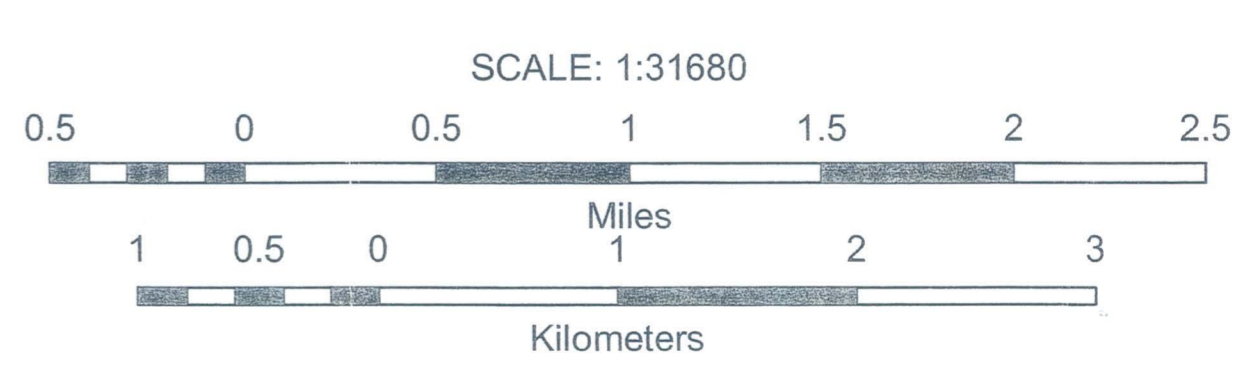
TOWN HWY. NO.	CLASS 3	CLASS 4
6	3.440	
7		(0.380)
10	2.840	
11	0.900	(6.340)
12	1.440	(1.630)
14	0.460	
16	0.860	
17	0.170	
18	0.500	(0.140)
19	0.510	
20		(0.060)
20		(0.200)
21	0.080	
22	0.960	
23	3.090	
25	0.030	
26	0.110	
27	2.810	
28	0.020	
29	0.570	
31	0.170	
32		(3.800)
33		(0.980)
34		(0.340)
35		(0.660)
36		(1.440)
37		(0.280)
TOTAL	18.960	16.250

* This portion of town highway is Class 3, but is functionally Class 4
Mileage includes error corrections dated August 22, 2007



- HIGHWAYS**
 - INTERSTATE
 - U.S. ROUTE
 - STATE ROUTE
 - CLASS 1
 - CLASS 2
 - CLASS 3
 - CLASS 4
 - LEGAL TRAIL
 - INTERSTATE OR DIVIDED HIGHWAY
 - STATE - HARD SURFACE OR PAVED
 - TOWN - HARD SURFACE OR PAVED
 - GRAVEL
 - SOIL OR GRADED AND DRAINED EARTH
 - UNIMPROVED OR PRIMITIVE
 - IMPASSABLE OR UNTRAVELED
 - LEGAL TRAIL
 - DISCONTINUED
 - HIGHWAY CLASS CHANGE
 - RAILROAD
- PUBLIC LAND**
 - POLITICAL SUBDIVISIONS**
 - STATE BOUNDARY
 - COUNTY BOUNDARY
 - TOWN BOUNDARY
 - VILLAGE BOUNDARY
 - URBAN COMPACT
 - WATER BODIES**
 - OPEN WATER
 - SWAMP
 - STREAM OR BROOK
 - BRIDGE OR CULVERT**
 - BRIDGE OR CULVERT GREATER THAN 20'
 - BRIDGE OR CULVERT 6' - 20'
 - B34 STATE BRIDGE IDENTIFIER
 - B34 TOWN BRIDGE IDENTIFIER
 - FEDERAL CLASSIFICATION IDENTIFIER**
 - FAU URBAN ARTERIAL OR COLLECTOR
 - MA MINOR ARTERIAL
 - MJC MAJOR COLLECTOR
 - MNC MINOR COLLECTOR
 - PA PRINCIPAL ARTERIAL

VERMONT
GENERAL HIGHWAY MAP
Town of Chittenden
RUTLAND COUNTY
Transportation District #3
Prepared by the
Vermont Agency of Transportation
Policy & Planning Division
in cooperation with
U.S. Department of Transportation
Federal Highway Administration



DISCLAIMER:
The untraveled highways (laid-out town highways), discontinued highways, and legal trails shown hereon are those of which the Agency of Transportation has record; others may exist.
Highway and bridge data by the Agency of Transportation, Policy & Planning Division. All other data from the Vermont Center for Geographic Information.

Vermont State Plane Coordinate System
North American Datum of 1983
SPCS_Zone_Identifier: 4400
Geodetic Reference System: 80
4,000-meter grid, Easting - Northing

