

District 4
Certcode 0903-0

**CERTIFICATE OF HIGHWAY MILEAGE
YEAR ENDING FEBRUARY 10, 2018**

Fill out form, make and file copy with the Town Clerk, and mail ORIGINAL, before February 20, 2018 to:
Vermont Agency of Transportation, Division of Policy, Planning and Intermodal Development, Mapping Section
One National Life Drive, Montpelier, VT 05633.

We, the members of the legislative body of **BROOKFIELD** in **ORANGE** County
on an oath state that the mileage of highways, according to Vermont Statutes Annotated, Title 19, Section 305,
added 1985, is as follows:

PART I - CHANGES TOTALS - Please fill in and calculate totals.

Town Highways	Previous Mileage	Added Mileage	Subtracted Mileage	Total	Scenic Highways
Class 1	0.000			u	0.000
Class 2	19.180	0.05		19.230	0.000
Class 3	41.77	0.00		u	0.000
State Highway	23.590			u	0.000
Total	84.540			84.590	0.000
* Class 1 Lane	0.000			u	
* Class 4	12.86			u	0.000
* Legal Trail	1.88			u	

* Mileage for Class 1 Lane, Class 4, and Legal Trail classifications are NOT included in total.

PART II - INFORMATION AND DESCRIPTION OF CHANGES SHOWN ABOVE.

- 1. NEW HIGHWAYS:** Please attach Selectmen's "Certificate of Completion and Opening".
- 2. DISCONTINUED:** Please attach SIGNED copy of proceedings (minutes of meeting).
- 3. RECLASSIFIED/REMEASURED:** Please attach SIGNED copy of proceedings (minutes of meeting).
CL2 TH-3 (West St) mileage adjustment +0.03mi (remeasured); total from 3.25 to 3.28
CL2 TH-6 (Crossover Rd) mileage adjustment +0.02mi (remeasured); total from 1.20 to 1.22
~~CL2 TH 54 (Montgomery Rd) mileage adjustment +0.06mi (remeasured for new alignment); total from 0.16 to 0.25~~
- 4. SCENIC HIGHWAYS:** Please attach a copy of order designating/discontinuing Scenic Highways.

IF THERE ARE NO CHANGES IN MILEAGE: Check box and sign below. []

PART III - SIGNATURES - PLEASE SIGN.

Selectmen/ Aldermen/ Trustees Signatures:

T/C/V Clerk Signature:

Date Filed:

4/4/18

Please sign ORIGINAL and return it for Transportation signature.

AGENCY OF TRANSPORTATION APPROVAL: Signed copy will be returned to T/C/V Clerk.

APPROVED:

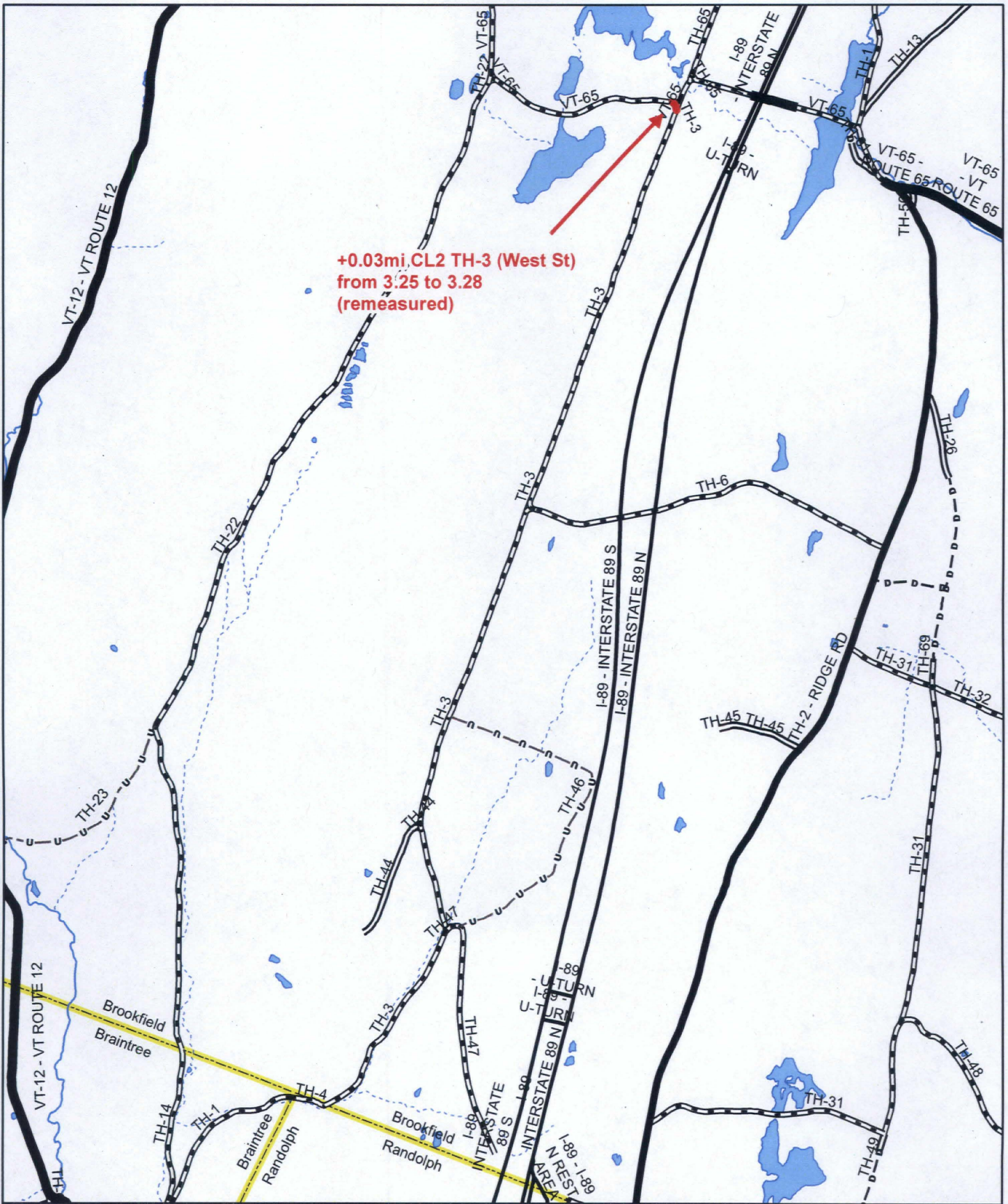
DATE:

4/10/2018

Received

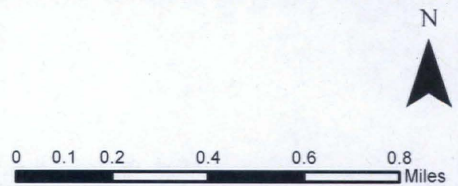
APR 04 2018

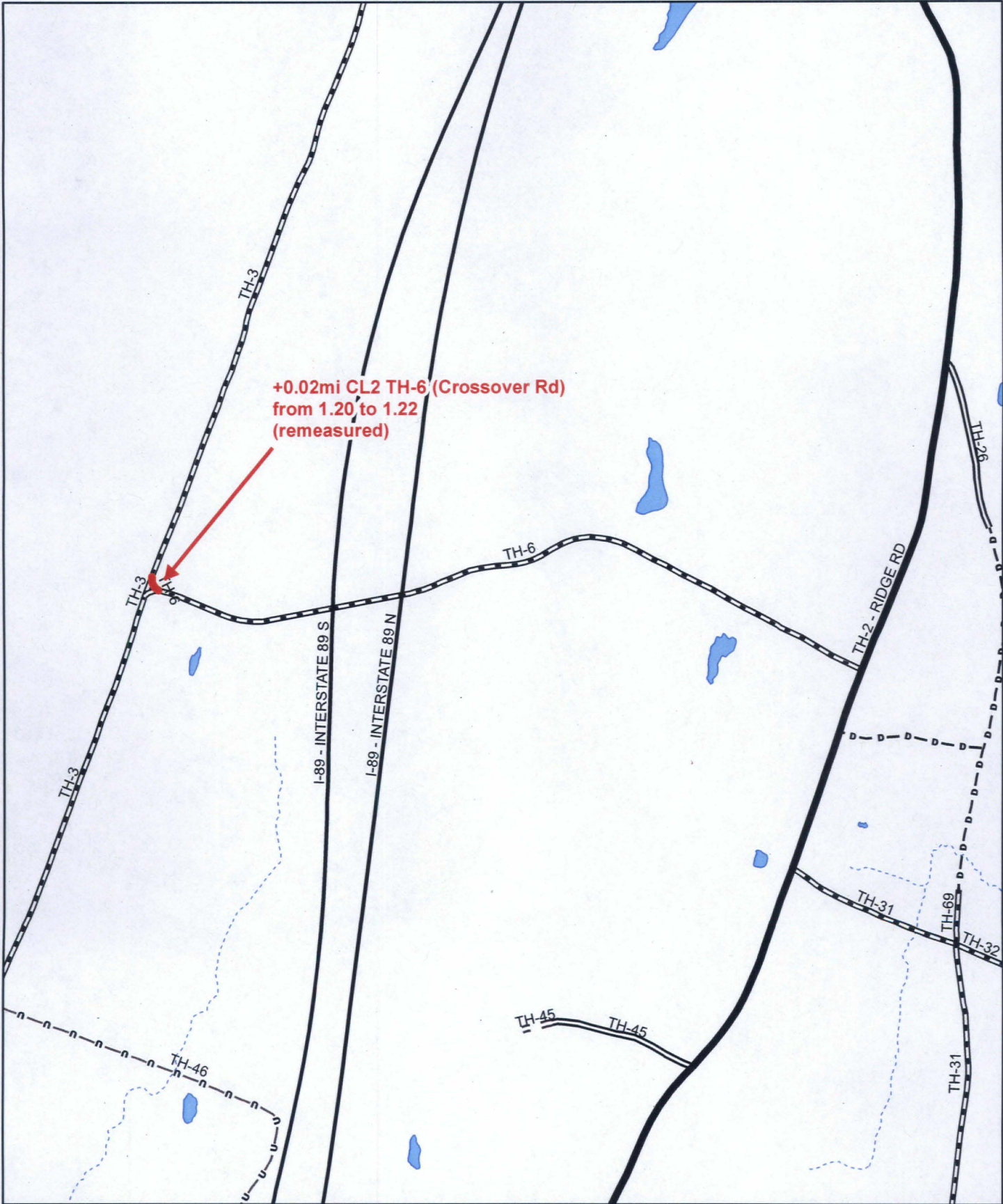
**Policy, Planning & Intermodal
Development Division**



Mileage Certificate Change 2018
BROOKFIELD
 (CTUA: 0903-0)

Mapping Section
 Division of Policy, Planning, and Intermodal Development
 Vermont Agency of Transportation - November 2017



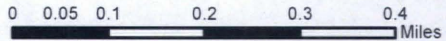


+0.02mi CL2 TH-6 (Crossover Rd)
 from 1.20 to 1.22
 (remeasured)

Mileage Certificate Change 2018
BROOKFIELD
 (CTUA: 0903-0)



Mapping Section
 Division of Policy, Planning, and Intermodal Development
 Vermont Agency of Transportation - November 2017





State of Vermont
Division of Policy and Planning - Mapping Section

1 National Life Drive
Montpelier, VT 05633-5001
<http://vtrans.vermont.gov>

Agency of Transportation

Telephone: 802-828-2600
Fax: 802-828-2334
Email: johnathan.croft@vermont.gov

March 9, 2018

Chair, Selectboard
Brookfield
c/o Town Clerk
PO Box 463
Brookfield, VT 05036-0463

To Town Clerk and Selectboard:

In early January, the Vermont Agency of Transportation mailed the annual Certificate of Highway Mileage to you for completion and return. To date, your town's certificate has not been received. We use this certificate to confirm highway mileage for the purpose of allocating state aid for town roads. If we do not receive a completed mileage certificate from you by March 31, we will assume there are no changes from last year's certificate and state aid will be based on those mileages.

The completed mileage certificate should be returned to:
Vermont Agency of Transportation
PPIDD - Mapping Section
1 National Life Drive
Montpelier, VT 05633-5001

Please feel free to contact me with any questions or comments regarding the Mileage Certificates or the process. I can be reached via telephone at (802) 828-2600 or via email at johnathan.croft@vermont.gov.

Sincerely,

A handwritten signature in black ink, appearing to read "Johnathan Croft".

Johnathan Croft
AOT GIS Database Administrator

JFC/kg

cc: Mileage Certificate File

State of Vermont
Division of Policy, Planning and Intermodal Development - Mapping Section
1 National Life Drive
Montpelier, VT 05633-5001
<http://vtrans.vermont.gov/>

Telephone: 802-828-2600
Fax: 802-828-2334
Email: johnathan.croft@vermont.gov

Agency of Transportation

December 6, 2017

Theresa Godfrey, Town Clerk
Town of Brookfield, c/o Town Clerk
PO Box 463
Brookfield, VT 05036

preloved
12/12/2017

Dear Ms. Godfrey,

During a recent review of road centerlines and town highways in the Town of Brookfield, we identified three potential mileage changes that will be made to the upcoming Mileage Certificate and a realignment which we seek information from the Town.

The first is the addition of a previously unaccounted-for leg of a "Y" intersection on TH-3 (West St) at the intersection with VT-65. This segment of highway is 0.03 miles and would be added as an approach in our data and to the mileage of TH-3.

The second is the addition of a previously unaccounted-for leg of a "Y" intersection on TH-6 (Crossover Rd), where it intersects TH-3 (West St). This segment of highway is 0.02 miles and would be added as an approach in our data to the mileage of TH-6.

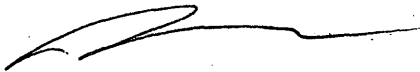
The last item is an apparent realignment or alteration of TH-54 (Montgomery Rd) at the intersection of VT-14. This shift in alignment and change from a "Y" intersection to a "T" intersection with VT-14 has changed the mileage of TH-54. On October 10th, 2016, TH-54 (Montgomery Rd) was visited for field inventory purposes and remeasured to assess the new length of this road following the realignment. Based on this remeasurement, there is an additional 0.06 miles of class 3 town highway that should be accounted for, which would increase the class 3 section of TH-54 from 0.19 to 0.25 miles. Can the Town provide insight to what project altered TH-54 and any documentation regarding the laying out of the new section of highway? This appears to be an alteration, but I seek additional details regarding this highway change.

Please find enclosed maps of the town highways in question to provide context of the mileage changes and the request for information on TH-54's realignment.

These changes will be preloaded on the 2018 Certificate of Highway Mileage for Brookfield. The Certificate is expected to be mailed to the town in early January and should be returned to VTrans by February 20.

Please feel free to contact me with any questions or comments regarding these changes, or mapping in general.

Sincerely,

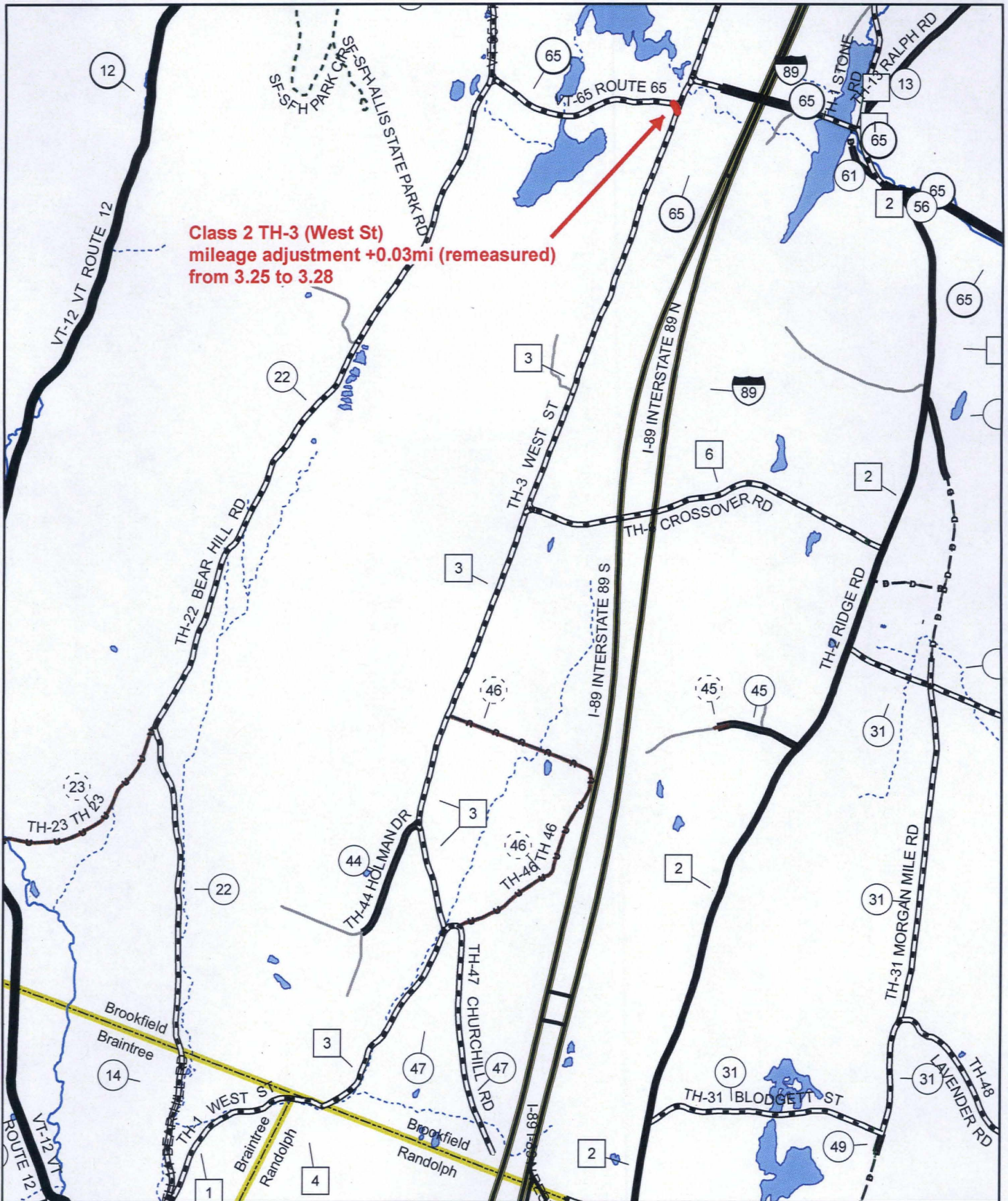


Johnathan Croft
VTrans Mapping Section Chief

JFC/kg

Enclosures

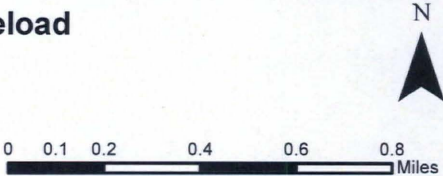
cc: Tammy Ellis – District Transportation Administrator – District 4
Christopher Bump – District Project Manager – District 4

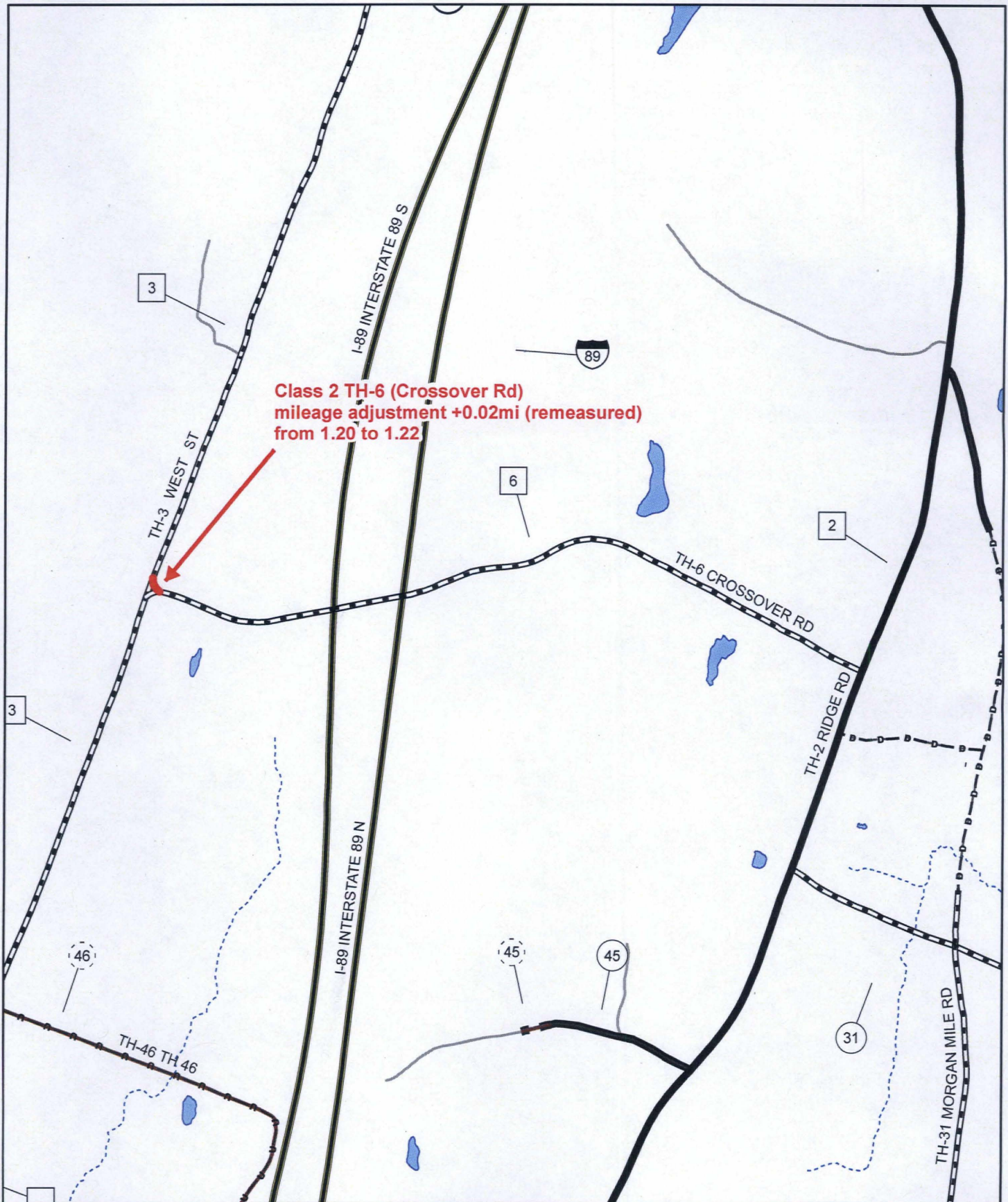


**Class 2 TH-3 (West St)
mileage adjustment +0.03mi (remeasured)
from 3.25 to 3.28**

Brookfield 2018 Mileage Certificate Preload

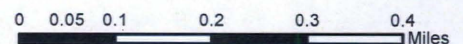
Mapping Section
Division of Policy, Planning, and Intermodal Development
Vermont Agency of Transportation - November 2017

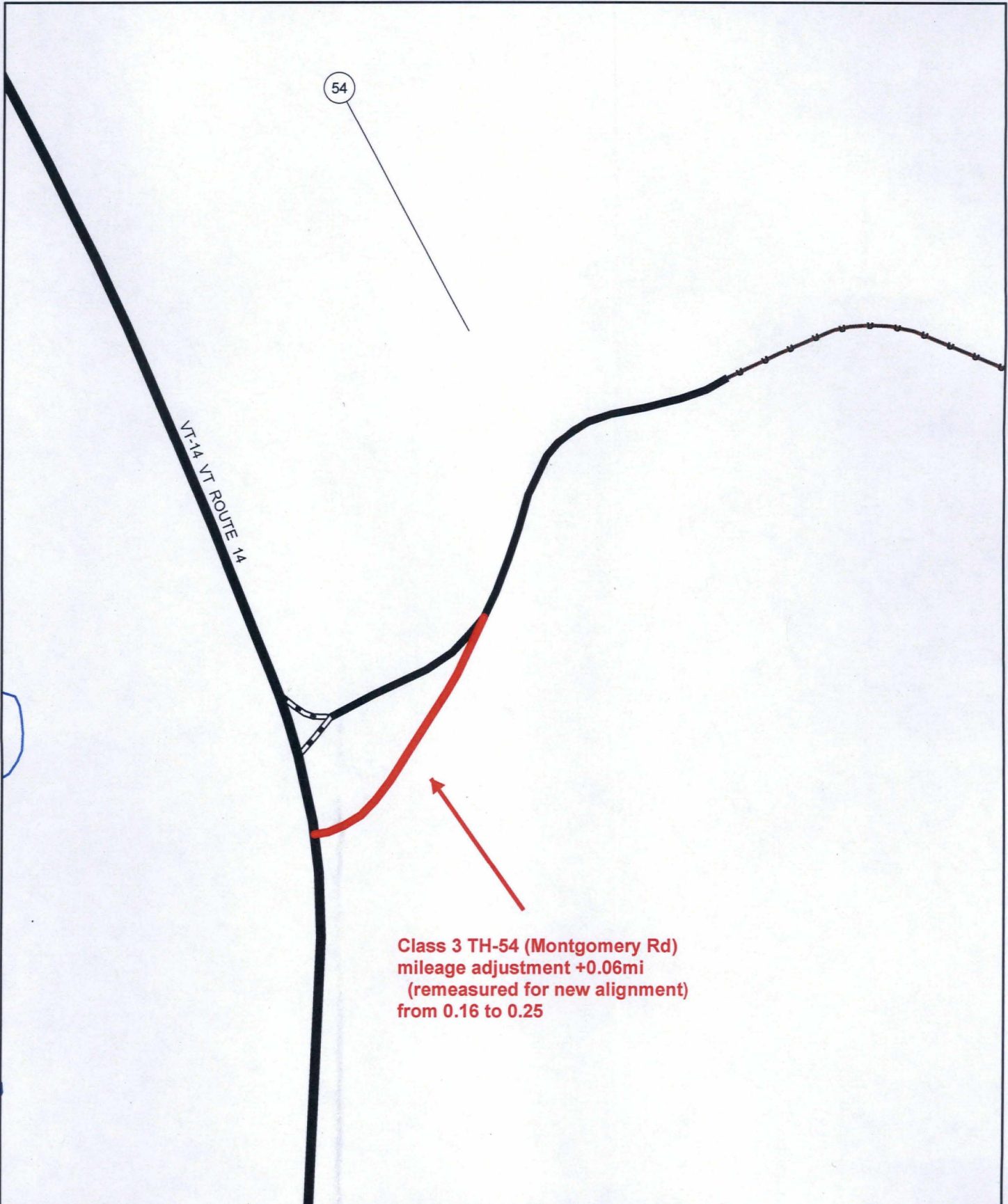




Brookfield 2018 Mileage Certificate Preload

Mapping Section
Division of Policy, Planning, and Intermodal Development
Vermont Agency of Transportation - November 2017





54

VT-14 VT ROUTE 14

Class 3 TH-54 (Montgomery Rd)
mileage adjustment +0.06mi
(remeasured for new alignment)
from 0.16 to 0.25

Brookfield 2018 Mileage Certificate Preload

Mapping Section
Division of Policy, Planning, and Intermodal Development
Vermont Agency of Transportation - November 2017

