

District 8
Certcode 0808-0

**CERTIFICATE OF HIGHWAY MILEAGE
YEAR ENDING FEBRUARY 10, 2018**

Fill out form, make and file copy with the Town Clerk, and mail ORIGINAL, before February 20, 2018 to:
Vermont Agency of Transportation, Division of Policy, Planning and Intermodal Development, Mapping Section
One National Life Drive, Montpelier, VT 05633.

We, the members of the legislative body of STOWE in LAMOILLE County
on an oath state that the mileage of highways, according to Vermont Statutes Annotated, Title 19, Section 305,
added 1985, is as follows:

PART I - CHANGES TOTALS - Please fill in and calculate totals.

Town Highways	Previous Mileage	Added Mileage	Subtracted Mileage	Total	Scenic Highways
Class 1	1.549	0	0	1.549	0.000
Class 2	14.410	0	0	14.410	0.000
Class 3	65.15	0	0	65.15	14.700
State Highway	13.904	0	0	13.904	1.147
Total	95.013			95.013	15.847
* Class 1 Lane	0.000	0	0	0	0
* Class 4	12.10	0	0	12.10	3.610
* Legal Trail	2.12	0	0	2.12	—

* Mileage for Class 1 Lane, Class 4, and Legal Trail classifications are NOT included in total.

PART II - INFORMATION AND DESCRIPTION OF CHANGES SHOWN ABOVE.

1. NEW HIGHWAYS: Please attach Selectmen's "Certificate of Completion and Opening".

NO CHANGE

2. DISCONTINUED: Please attach SIGNED copy of proceedings (minutes of meeting).

NO CHANGE

3. RECLASSIFIED/REMEASURED: Please attach SIGNED copy of proceedings (minutes of meeting).

NO CHANGE

4. SCENIC HIGHWAYS: Please attach a copy of order designating/discontinuing Scenic Highways.

NO CHANGE

IF THERE ARE NO CHANGES IN MILEAGE: Check box and sign below.

PART III - SIGNATURES - PLEASE SIGN.

Selectmen/ Aldermen/ Trustees Signatures:

T/C/V Clerk Signature:

Date Filed:

1.23.2018

Please sign ORIGINAL and return it for Transportation signature.

AGENCY OF TRANSPORTATION APPROVAL: Signed copy will be returned to T/C/V Clerk.

APPROVED:

Representative, Agency of Transportation

DATE:

2/11/2018

Received

JAN 25 2018

Policy, Planning & Intermodal
Development Division

Vermont Statutes Annotated

19 V.S.A. § 305. Measurement and inspection

§ 305. Measurement and inspection

(a) After reasonable notice to the selectboard, a representative of the agency may measure and inspect the class 1, 2, and 3 town highways in each town to verify the accuracy of the records on file with the agency. Upon request, the selectboard or their designee shall be permitted to accompany the representative of the agency during the measurement and inspection. The agency shall notify the town when any highway, or portion of a highway, does not meet the standards for its assigned class. If the town fails, within one year, to restore the highway or portion of the highway to the accepted standard, or to reclassify, or to discontinue, or develop an acceptable schedule for restoring to the accepted standards, the agency for purposes of apportionment under section 306 of this title shall deduct the affected mileage from that assigned to the town for the particular class of the road in question.

(b) Annually, on or before February 10, the selectboard shall file with the town clerk a sworn statement of the description and measurements of all class 1, 2, 3, and 4 town highways and trails then in existence, including any special designation such as a throughway or scenic highway. When class 1, 2, 3, or 4 town highways, trails, or unidentified corridors are accepted, discontinued, or reclassified, a copy of the proceedings shall be filed in the town clerk's office and a copy shall be forwarded to the agency.

(c) All class 1, 2, 3, and 4 town highways and trails shall appear on the town highway maps by July 1, 2015.

(d) At least 45 days prior to first including a town highway or trail that is not clearly observable by physical evidence of its use as a highway or trail and that is legally established prior to February 10, 2006 in the sworn statement required under subsection (b) of this section, the legislative body of the municipality shall provide written notice and an opportunity to be heard at a duly warned meeting of the legislative body to persons owning lands through which a highway or trail passes or abuts.

(e) The agency shall not accept any change in mileage until the records required to be filed in the town clerk's office by this section are received by the agency. A request by a municipality to the agency for a change in mileage shall include a description of the affected highway or trail, a copy of any surveys of the affected highway or trail, minutes of meetings at which the legislative body took action with respect to the changes, and a current town highway map with the requested deletions and additions sketched on it. A survey shall not be required for class 4 town highways that are legally established prior to February 10, 2006. All records filed with the agency are subject to verification in accordance with subsection (a) of this section.

(f) The selectboard of any town who are aggrieved by a finding of the agency concerning the measurement, description, or classification of a town highway may appeal to the transportation board by filing a notice of appeal with the executive secretary of the transportation board.

(g) The agency shall provide each town with a map of all of the highways in that town together with the mileage of each class 1, 2, 3, and 4 highway, as well as each trail, and such other information as the agency deems appropriate.

Excerpt of 19 V.S.A. § 305 - *Measurement and inspection* from Vermont Statutes Online located at – <https://legislature.vermont.gov/statutes/section/19/003/00305>

December 2017



MEMORANDUM

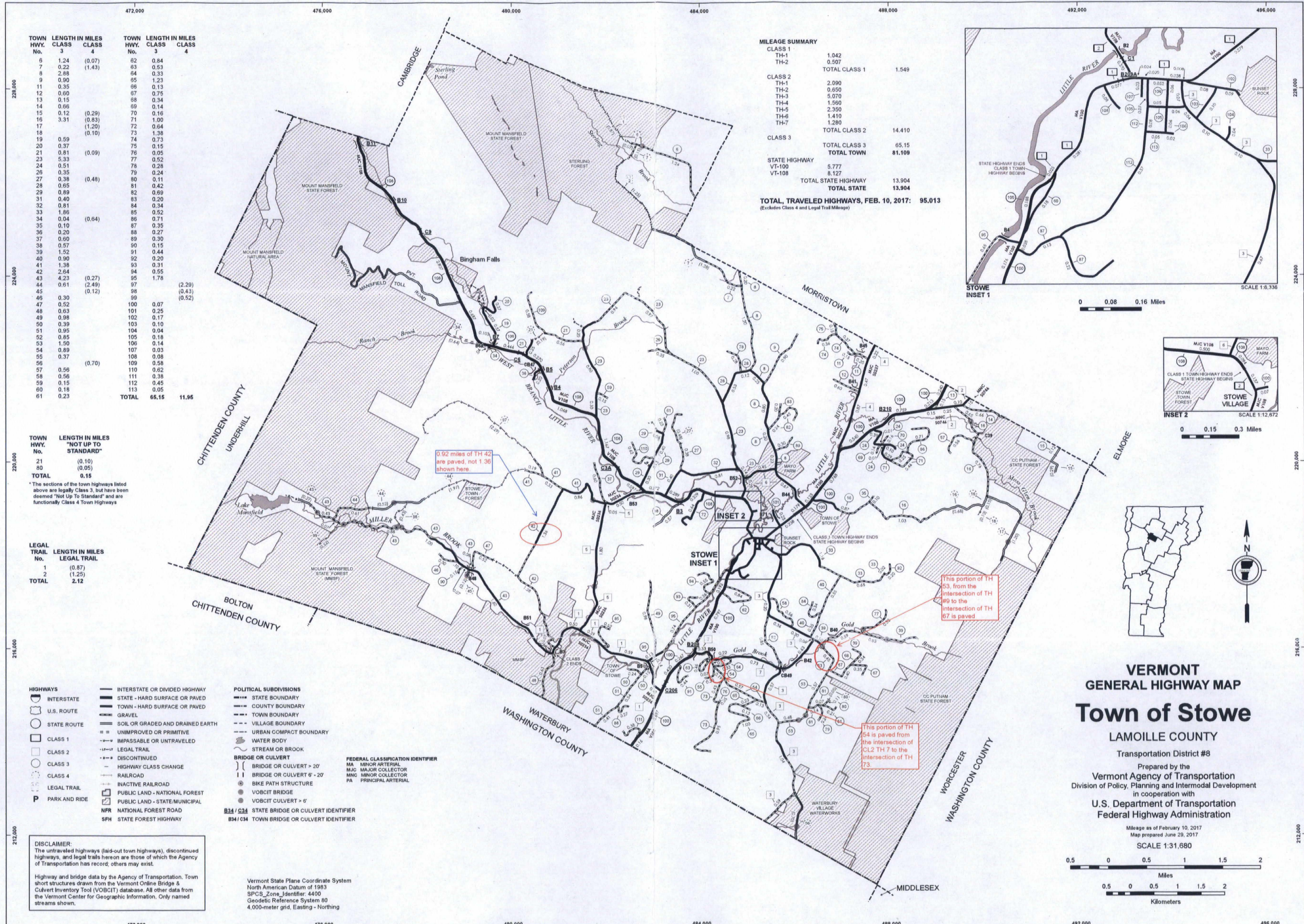
*Public Works Department
PO Box 730
67 Main Street
Stowe, VT 05672
802-253-6153
cjolly@townofstowevermont.org*

TO: Kerry Alley, Mileage Certificate Specialist, VTrans
CC:
FROM: Chris Jolly, Assistant Town Engineer
DATE: January 23, 2018
SUBJECT: 2018 Certificate of Highway Mileage
DPW PROJECT NO: N/A

Ms. Alley,

Enclosed please find the Town of Stowe's 2018 Certificate of Highway Mileage as signed by members of the Selectboard and the Town Clerk. I have also enclosed a hard copy of the 2017 Town Highway Map that includes some mark ups of surface changes.

Chris



TOWN HWY. No.	LENGTH IN MILES CLASS 3	CLASS 4	TOWN HWY. No.	LENGTH IN MILES CLASS 3	CLASS 4
6	1.24	(0.07)	62	0.84	
7	0.22	(1.43)	63	0.53	
8	2.88		64	0.33	
9	0.90		65	1.23	
11	0.35		66	0.13	
12	0.60		67	0.75	
13	0.15		68	0.34	
14	0.06		69	0.14	
15	0.12	(0.29)	70	0.16	
16	3.31	(0.83)	71	1.00	
17		(1.20)	72	0.64	
18		(0.10)	73	1.38	
19	0.59		74	0.73	
20	0.37		75	0.15	
21	0.81	(0.09)	76	0.05	
23	5.33		77	0.52	
24	0.51		78	0.28	
25	0.35		79	0.24	
27	0.38	(0.48)	80	0.11	
28	0.65		81	0.42	
29	0.89		82	0.59	
31	0.40		83	0.20	
32	0.81		84	0.34	
33	1.86		85	0.52	
34	0.04	(0.64)	86	0.71	
35	0.10		87	0.35	
36	0.20		88	0.27	
37	0.60		89	0.30	
38	0.57		90	0.15	
39	1.52		91	0.44	
40	0.90		92	0.20	
41	1.38		93	0.31	
42	2.64		94	0.55	
43	4.23	(0.27)	95	1.78	
44	0.61	(2.49)	96		(2.29)
45		(0.12)	98		(0.43)
46	0.30		99		(0.52)
47	0.52		100	0.07	
48	0.63		101	0.25	
49	0.98		102	0.17	
50	0.39		103	0.10	
51	0.95		104	0.04	
52	0.85		105	0.18	
53	1.50		106	0.14	
54	0.89		107	0.03	
55	0.37		108	0.08	
56		(0.70)	109	0.58	
57	0.56		110	0.62	
58	0.56		111	0.38	
59	0.15		112	0.45	
60	0.18		113	0.05	
61	0.23		TOTAL	65.15	11.96

TOWN HWY. No.	LENGTH IN MILES "NOT UP TO STANDARD"
21	(0.10)
80	(0.05)
TOTAL	0.15

*The sections of the town highways listed above are legally Class 3, but have been deemed "Not Up To Standard" and are functionally Class 4 Town Highways

LEGAL TRAIL No.	LENGTH IN MILES LEGAL TRAIL
1	(0.87)
2	(1.25)
TOTAL	2.12

- HIGHWAYS**
- INTERSTATE OR DIVIDED HIGHWAY
 - STATE - HARD SURFACE OR PAVED
 - TOWN - HARD SURFACE OR PAVED
 - GRAVEL
 - SOIL OR GRADED AND DRAINED EARTH
 - UNIMPROVED OR PRIMITIVE
 - IMPASSABLE OR UNTRAVELED
 - LEGAL TRAIL
 - DISCONTINUED
 - HIGHWAY CLASS CHANGE
 - RAILROAD
 - INACTIVE RAILROAD
 - PUBLIC LAND - NATIONAL FOREST
 - PUBLIC LAND - STATE/MUNICIPAL
 - NATIONAL FOREST ROAD
 - STATE FOREST HIGHWAY

- POLITICAL SUBDIVISIONS**
- STATE BOUNDARY
 - COUNTY BOUNDARY
 - TOWN BOUNDARY
 - VILLAGE BOUNDARY
 - URBAN COMPACT BOUNDARY
 - WATER BODY
 - STREAM OR BROOK
- BRIDGE OR CULVERT**
- BRIDGE OR CULVERT > 20'
 - BRIDGE OR CULVERT 6' - 20'
 - BIKE PATH STRUCTURE
 - VOCBIT BRIDGE
 - VOCBIT CULVERT > 6'
- FEDERAL CLASSIFICATION IDENTIFIER**
- MA - MINOR ARTERIAL
 - MAJ - MAJOR COLLECTOR
 - MNC - MINOR COLLECTOR
 - PA - PRINCIPAL ARTERIAL
- BRIDGE OR CULVERT IDENTIFIER**
- B34 / C34 - STATE BRIDGE OR CULVERT IDENTIFIER
 - B34 / C34 - TOWN BRIDGE OR CULVERT IDENTIFIER

DISCLAIMER:
The untraveled highways (laid-out town highways), discontinued highways, and legal trails shown are those of which the Agency of Transportation has record; others may exist.

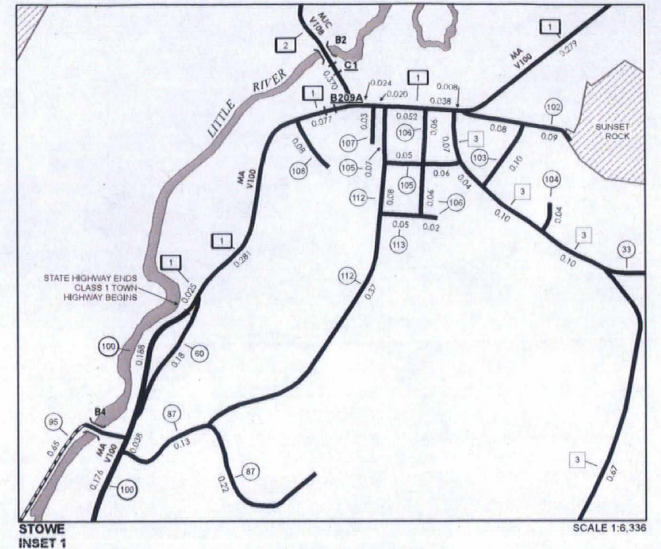
Highway and bridge data by the Agency of Transportation. Town short structures drawn from the Vermont Online Bridge & Culvert Inventory Tool (VOCBIT) database. All other data from the Vermont Center for Geographic Information. Only named streams shown.

Vermont State Plane Coordinate System
North American Datum of 1983
SPCS_Zone_Identifier: 4400
Geodetic Reference System 80
4,000-meter grid, Easting - Northing

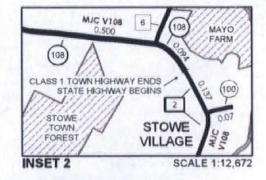
MILEAGE SUMMARY

CLASS 1		
TH-1	1.042	
TH-2	0.507	
TOTAL CLASS 1	1.549	
CLASS 2		
TH-1	2.090	
TH-2	0.550	
TH-3	5.070	
TH-4	1.560	
TH-5	2.350	
TH-6	1.410	
TH-7	1.280	
TOTAL CLASS 2	14.410	
CLASS 3		
TOTAL CLASS 3	65.15	
TOTAL TOWN	81.109	
STATE HIGHWAY		
VT-100	5.777	
VT-108	8.127	
TOTAL STATE HIGHWAY	13.904	
TOTAL STATE	13,904	
TOTAL TRAVELED HIGHWAYS, FEB. 10, 2017:	95.013	

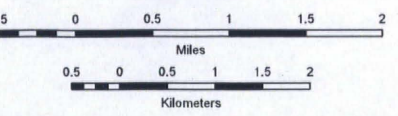
(Excludes Class 4 and Legal Trail Mileage)



SCALE 1:6,336



SCALE 1:12,672



VERMONT GENERAL HIGHWAY MAP
Town of Stowe
LAMOILLE COUNTY
Transportation District #8
Prepared by the
Vermont Agency of Transportation
Division of Policy, Planning and Intermodal Development
in cooperation with
U.S. Department of Transportation
Federal Highway Administration

Mileage as of February 10, 2017
Map prepared June 29, 2017
SCALE 1:31,680

Alley, Kerry

From: Chris Jolly <cjolly@stowevt.gov>
Sent: Monday, February 05, 2018 9:16 AM
To: Alley, Kerry
Subject: RE: Question about pavement on Trapp Hill Rd (TH-42)

Hi Kerry –

OK. I'll make a note to check in with you before I fill out next year's certificate and get the adjustment / correction from you for TH-42.

Chris



Chris Jolly
Assistant Town Engineer
Public Works Department
PO Box 730 67 Main Street
Stowe, VT 05672
cjolly@stowevt.gov
office: (802) 253-6153
cell: (802) 696-8435

**NOTE MY NEW EMAIL
ADDRESS: cjolly@stowevt.gov**

From: Alley, Kerry [mailto:Kerry.Alley@vermont.gov]
Sent: Monday, February 05, 2018 9:14 AM
To: Chris Jolly <cjolly@stowevt.gov>
Subject: RE: Question about pavement on Trapp Hill Rd (TH-42)

Thanks Chris!

That's exactly what I was wondering about the pavement, based on the measure you gave me and the drive right there.

We probably won't measure TH-42 unless we think it has been realigned since it was last inventoried in 1984, as it is so close to the GIS measure. It's mostly a case of me determining if VTrans took into account all of the past realignments (which I assume we did, because they all (at least 2 I am already aware of) increased the length of TH-42), and that the increase in mileage shouldn't have been applied elsewhere, and that things just generally make sense over all before applying a remeasurement.

Kerry

Original Attachments of message below: <<Full page photo.pdf>>

From: Chris Jolly [mailto:cjolly@stowevt.gov]
Sent: Monday, February 05, 2018 8:54 AM

To: Alley, Kerry <Kerry.Alley@vermont.gov>

Subject: RE: Question about pavement on Trapp Hill Rd (TH-42)

Hi Kerry –

We extended the pavement as shown in the attached pdf with our paving this summer.

I'll make a note to revisit the length of TH-42 this coming year. Should be simple enough to clean up a discrepancy of a few hundredths. Is that something you will go out and measure?

Chris



Chris Jolly
Assistant Town Engineer
Public Works Department
PO Box 730 67 Main Street
Stowe, VT 05672
cjolly@stowevt.gov
office: (802) 253-6153
cell: (802) 696-8435

**NOTE MY NEW EMAIL
ADDRESS: cjolly@stowevt.gov**

From: Alley, Kerry [<mailto:Kerry.Alley@vermont.gov>]

Sent: Friday, February 02, 2018 4:17 PM

To: Chris Jolly <cjolly@townofstowe.vermont.org>

Subject: Question about pavement on Trapp Hill Rd (TH-42)

Hi Chris,

Just wanted to check in with you to make sure I have the end of pavement shown correctly for TH-42. On our imagery and Google Maps, the pavement ends at the parking log as indicated with the change in line symbology in the screen-capture below. Is that still where the pavement ends, or has it been extended?

The 1.36 mi measure shown on the town highway map is for the entire segment of TH-42 between TH-41 and the discontinued road (formerly TH-47), regardless of surface type. We split up the mileage for changes in classification, but not for changes in surface type.

That being said, our mileage seems to be a bit "off" for TH-42 in general. ArcGIS measures it as 2.53 mi and a 1984 inventory found a measure of 2.56 mi, but our records have it as 2.64 mi! So, it looks like a little project for next year. 😊

Kerry



Kerry Alley | GIS Professional III
Vermont Agency of Transportation
1 National Life Dr | Montpelier, VT 05633
802-828-3666 | Kerry.Alley@vermont.gov
<http://vtrans.vermont.gov/planning/maps>

Chris Jolly

Stowe

- Office:
- Email: cjolly@stowevt.gov

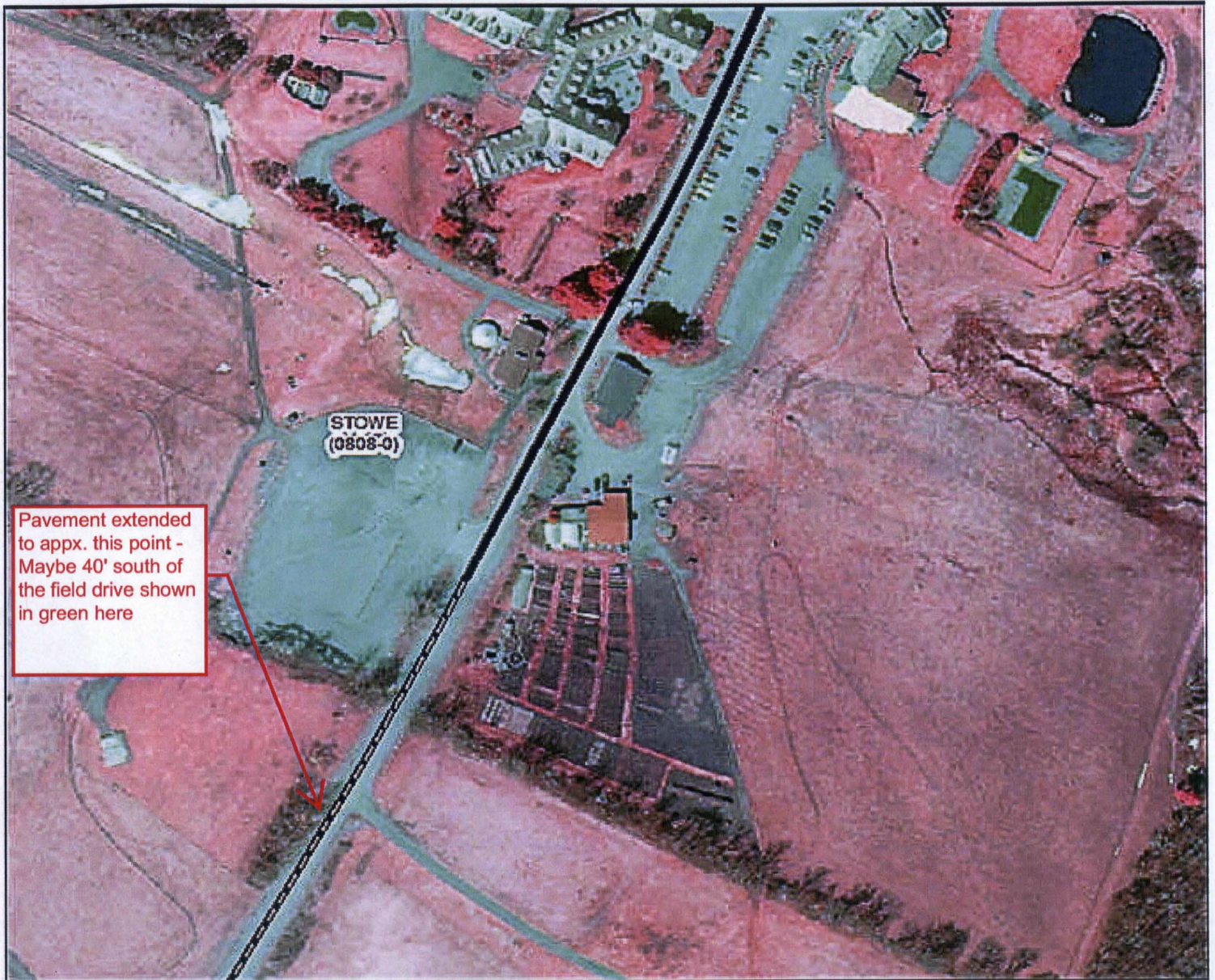
***** NOTICE *****

This message is confidential and privileged. If you have received it by mistake, please notify us by e-mail reply and delete it from your system; copying this message or disclosing its contents is prohibited.

***** PLEASE NOTE *****

Starting January 1st 2018 we are transitioning our email to the stowevt.gov domain.

My new email address is cjolly@stowevt.gov
Please update your records.



Pavement extended to appx. this point - Maybe 40' south of the field drive shown in green here