

2/25/2025

VTrans Mapping Section

District 8  
 Certcode 0605-0

**CERTIFICATE OF HIGHWAY MILEAGE**  
**YEAR ENDING FEBRUARY 10, 2025**

Fill out form, make and file a copy with the Town Clerk, and submit the Mileage Certificate on or before February 20, 2024 to: Vermont Agency of Transportation, Division of Policy, Planning and Intermodal Development, Mapping Section via email to: [aot.mileagecertificates@vermont.gov](mailto:aot.mileagecertificates@vermont.gov) or if necessary via mail to: VTrans PPAID - Mapping Section, 219 North Main Street, Barre VT 05641.

We, the members of the legislative body of FAIRFIELD in FRANKLIN County  
 on an oath state that the mileage of highways, according to Vermont Statutes Annotated, Title 19, Section 305, added 1985, is as follows:

**PART I - CHANGES TOTALS - Please fill in and calculate totals.**

Town Highways	Previous Mileage	Added Mileage	Subtracted Mileage	Total	Scenic Highways
Class 1	0.000			0	0.000
Class 2	21.750			21.750	0.000
Class 3	71.93		-0.49	71.44	0.000
State Highway	10.307			10.307	0.000
<b>Total</b>	<b>103.987</b>			<b>103.497</b>	<b>0.000</b>
* Class 1 Lane	0.000			0	
* Class 4	13.41	+0.49		13.90	0.000
* Legal Trail	0.00			0	

\* Mileage for Class 1 Lane, Class 4, and Legal Trail classifications are NOT included in total.

**PART II - INFORMATION AND DESCRIPTION OF CHANGES SHOWN ABOVE.**

1. NEW HIGHWAYS: Please attach Selectmen's "Certificate of Completion and Opening".

2. DISCONTINUED: Please attach SIGNED copy of proceedings (minutes of meeting).

3. RECLASSIFIED/REMEASURED: Please attach SIGNED copy of proceedings (minutes of meeting).

0.49 mi CL3 TH-25 (Menard Rd) designated Not Up To Standards (NUTS) pursuant to 19 VSA 305(a)

4. SCENIC HIGHWAYS: Please attach a copy of order designating/discontinuing Scenic Highways.

Mileage totals entered and Class 4 total corrected by P. DeAndrea, VTrans 2/25/2025 per email correspondence 2/19/2025

IF THERE ARE NO CHANGES RECORDED THIS YEAR: Place an X in the box and sign below. ☐

**PART III - SIGNATURES - PLEASE SIGN.**

Signatures of Selectmen/ Aldermen/ Trustees:

*[Handwritten signatures]*

*[Handwritten signature: Tom Bourgon]*  
*[Handwritten signature: Brian Duka]*

Signature of T/C/V Clerk:

*[Handwritten signature: Linda Rocker]*

Date Filed: 2/24/25

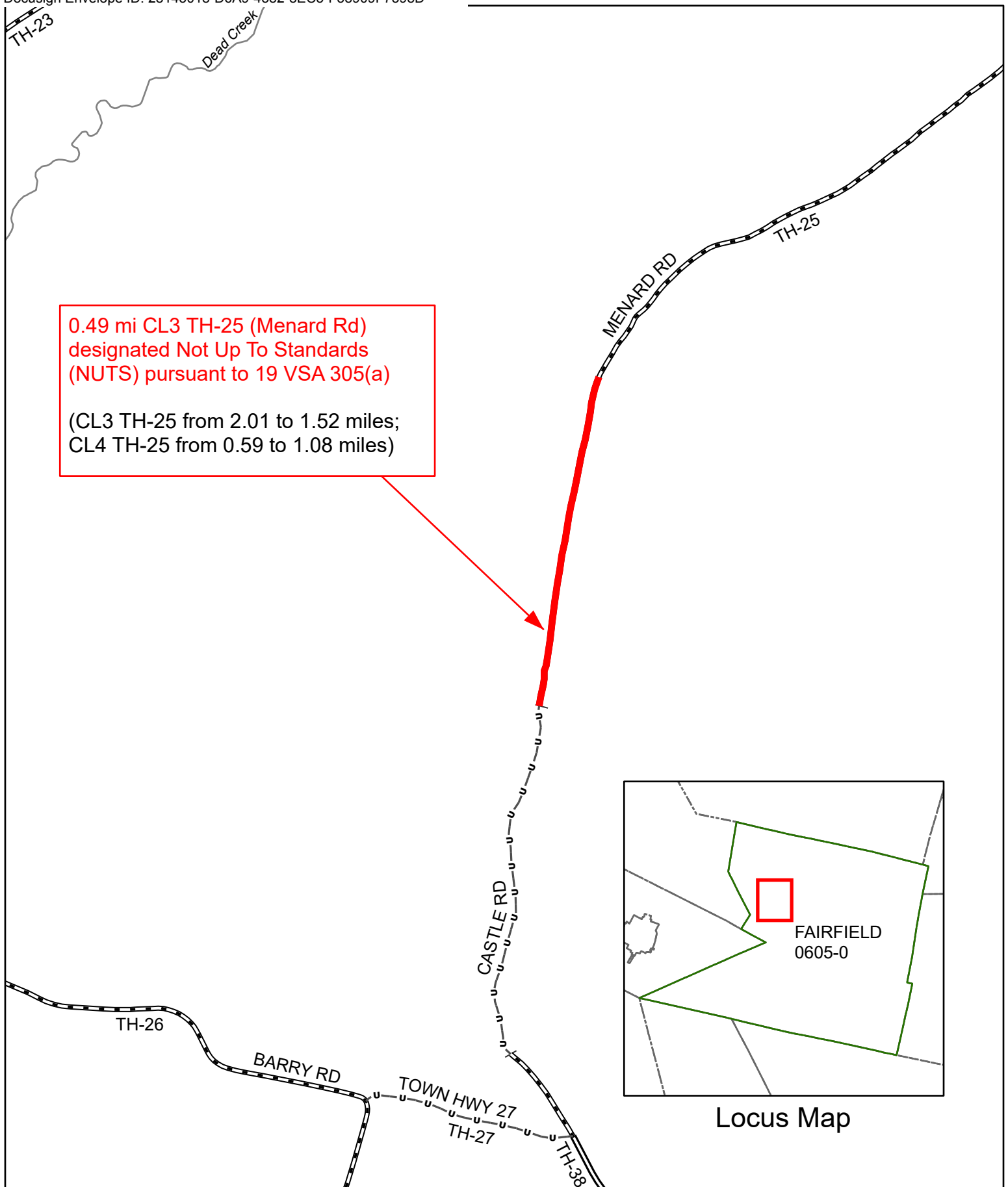
Please sign ORIGINAL and return it for Transportation signature.

AGENCY OF TRANSPORTATION APPROVAL: Signed copy will be returned to T/C/V Clerk.

APPROVED:

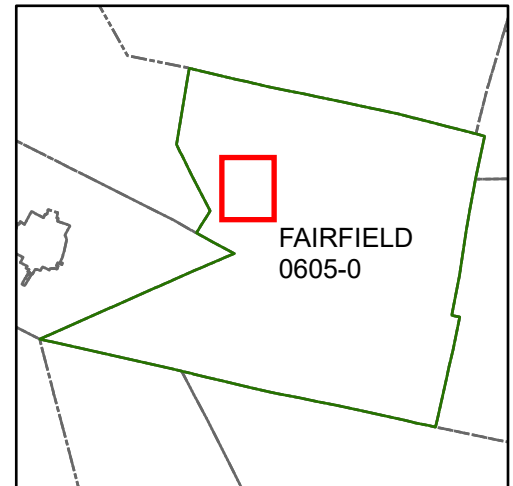
*[Handwritten signature: Johnathan Croft]*  
 Representative, Agency of Transportation

DATE: 2/25/2025



0.49 mi CL3 TH-25 (Menard Rd)  
designated Not Up To Standards  
(NUTS) pursuant to 19 VSA 305(a)

(CL3 TH-25 from 2.01 to 1.52 miles;  
CL4 TH-25 from 0.59 to 1.08 miles)

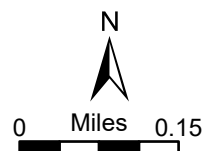


Locus Map

**Mileage Certificate Changes 2025**  
**FAIRFIELD TH-25**

(CTUA:0605-0)  
(CERTCODE:0605-0)

Mapping Section  
Division of Policy and Planning  
Vermont Agency of Transportation -- February 25, 2025



**From:** [AOT - Mileage Certificates](#)  
**To:** [Fairfield Town Administrator](#); [AOT - Mileage Certificates](#)  
**Subject:** RE: FAIRFIELD: 2025 Mileage Certificate Not Yet Received - ATTACHMENT CORRECTED  
**Date:** Wednesday, February 19, 2025 11:21:00 AM  
**Attachments:** [image001.png](#)

---

Hi Cathy,

No you do not need to put anything in #3, under Part II. The road is designated as NUTs per VTrans. The mileage is then subtracted from Class 3 and added to Class 4. The reclassification process is another thing that the Town will need to do in the future to remove the NUTs designation or bring it up to standards. You can send us the minutes from the meeting where the Selectboard signs the form so they are aware of the NUTs designation.

Thank you,

Pam

**Pamela DeAndrea (she/her)** | AOT GIS Professional III  
Policy, Planning & Research Bureau – Mapping Section  
Policy, Planning & Intermodal Development Division  
Vermont Agency of Transportation  
219 N. Main Street | Barre, VT 05641  
[802-793-7555 phone](tel:802-793-7555) | [pam.deandrea@vermont.gov](mailto:pam.deandrea@vermont.gov)  
<http://vtrans.vermont.gov>



Help raise money for Vermonters impacted by flood damage and show your Vermont pride with *Vermont Strong* and *Tough Too* license plates and socks. [Click here to purchase your Vermont Strong gear](#) or visit [DMV.Vermont.gov/VermontStrong23](https://DMV.Vermont.gov/VermontStrong23).

Impacted Vermonters can find resources and referrals by visiting [Vermont.Gov/Flood](https://Vermont.Gov/Flood).

---

**From:** Fairfield Town Administrator <townadmin@fairfieldvermont.us>  
**Sent:** Wednesday, February 19, 2025 10:59 AM  
**To:** AOT - Mileage Certificates <AOT.MileageCertificates@vermont.gov>  
**Subject:** RE: FAIRFIELD: 2025 Mileage Certificate Not Yet Received - ATTACHMENT CORRECTED

**EXTERNAL SENDER: Do not open attachments or click on links unless you recognize**

**and trust the sender.**

So, should I say in Part II. 3 “proceedings not yet complete.”?

*Cathy Ainsworth*

Town Administrator

Town of Fairfield

P.O. Box 5

Fairfield, VT 05455

(802) 827-3261 ext 101

---

**From:** AOT - Mileage Certificates <[AOT.MileageCertificates@vermont.gov](mailto:AOT.MileageCertificates@vermont.gov)>

**Sent:** Wednesday, February 19, 2025 10:52 AM

**To:** Fairfield Town Administrator <[townadmin@fairfieldvermont.us](mailto:townadmin@fairfieldvermont.us)>; AOT - Mileage Certificates <[AOT.MileageCertificates@vermont.gov](mailto:AOT.MileageCertificates@vermont.gov)>

**Subject:** RE: FAIRFIELD: 2025 Mileage Certificate Not Yet Received - ATTACHMENT CORRECTED

Hi Cathy,

That is ok if you have not reclassified yet, but it is still designated as NUTs. Just fill out Part I as follows and have the Selectboard sign and date as well as you and send back to us.

Under Class 3: **-0.49 miles, new Class 3 total = 71.44 miles**

Under Class 4: **+0.49 miles, new Class 4 total = 13.90 miles**

Thank you,

Pam

**Pamela DeAndrea (she/her)** | AOT GIS Professional III

Policy, Planning & Research Bureau – Mapping Section

Policy, Planning & Intermodal Development Division

Vermont Agency of Transportation

219 N. Main Street | Barre, VT 05641

802-793-7555 phone | [pam.deandrea@vermont.gov](mailto:pam.deandrea@vermont.gov)

<http://vtrans.vermont.gov>



Help raise money for Vermonters impacted by flood damage and show your Vermont pride with *Vermont Strong* and *Tough Too* license plates and socks. [Click here to purchase your Vermont Strong gear](#) or visit [DMV.Vermont.gov/VermontStrong23](https://DMV.Vermont.gov/VermontStrong23).



Impacted Vermonters can find resources and referrals by visiting [Vermont.Gov/Flood](https://Vermont.Gov/Flood).

---

**From:** Fairfield Town Administrator <[townadmin@fairfieldvermont.us](mailto:townadmin@fairfieldvermont.us)>

**Sent:** Wednesday, February 19, 2025 10:29 AM

**To:** AOT - Mileage Certificates <[AOT.MileageCertificates@vermont.gov](mailto:AOT.MileageCertificates@vermont.gov)>

**Subject:** RE: FAIRFIELD: 2025 Mileage Certificate Not Yet Received - ATTACHMENT CORRECTED

**EXTERNAL SENDER: Do not open attachments or click on links unless you recognize and trust the sender.**

Hi,

We have not completed the reclassification process for the Menard Road yet (we have not had the warned site visit due to inclement weather, therefore the hearing is also postponed. Please advise on how to proceed with this form.

Thank you,

*Cathy Ainsworth*

Town Administrator

Town of Fairfield

P.O. Box 5

Fairfield, VT 05455

(802) 827-3261 ext 101

---

**From:** AOT - Mileage Certificates <[AOT.MileageCertificates@vermont.gov](mailto:AOT.MileageCertificates@vermont.gov)>

**Sent:** Tuesday, February 18, 2025 4:59 PM

**To:** Fairfield Town Administrator <[townadmin@fairfieldvermont.us](mailto:townadmin@fairfieldvermont.us)>

**Cc:** Linda Hodet <[linda@fairfieldvermont.us](mailto:linda@fairfieldvermont.us)>

**Subject:** FAIRFIELD: 2025 Mileage Certificate Not Yet Received - ATTACHMENT CORRECTED

Greetings from the VTrans Mapping Section,

Please disregard the previous email sent by us about 20 minutes ago, because that email had last year's Mileage Certificate attached instead of this year's (2025) Mileage Certificate.

The VTrans Mapping Section sent you an email on 01/06/2025 with Fairfield's 2025 Mileage Certificate

attached. To date, we have not yet received this certificate, and therefore want to remind Fairfield

to sign and return the Certificate to the Mapping Section as soon as possible. For your convenience we have

also attached a copy of the certificate to this email. Certificates can be scanned and returned to

us at  
[aot.mileagecertificates@vermont.gov](mailto:aot.mileagecertificates@vermont.gov).

Please note that the Mileage Certificates need to be signed and returned to the Mapping Section, even if there are no changes. VTrans uses this certificate to confirm highway mileage for the purpose of allocating state aid for town roads. If we do not receive a completed mileage certificate from you by March 17, 2024, we will assume there are no changes from last year's certificate and state aid will be based on those mileages.

Sincerely,

Kerry Alley

---

Kerry Alley | GIS Professional III  
Policy, Planning & Research Bureau - Mapping Section  
Policy, Planning & Intermodal Development Division  
Vermont Agency of Transportation  
219 North Main Street | Barre, VT 05641  
802-917-2621 (cell) | [Kerry.Alley@vermont.gov](mailto:Kerry.Alley@vermont.gov)  
<https://vtrans.vermont.gov/planning/maps>

**From:** [Fairfield Town Administrator](#)  
**To:** [DeAndrea, Pam](#)  
**Subject:** RE: TH-25 and TH-68 follow up  
**Date:** Tuesday, November 12, 2024 10:57:03 AM  
**Attachments:** [image006.png](#)  
[image007.png](#)  
[image008.png](#)  
[image015.png](#)  
[image016.png](#)  
[image017.png](#)  
[image018.png](#)  
[image019.png](#)  
[image020.png](#)  
[image021.png](#)  
[image022.png](#)  
[image023.png](#)  
[image024.png](#)  
[image025.png](#)  
[image026.png](#)

---

**EXTERNAL SENDER: Do not open attachments or click on links unless you recognize and trust the sender.**

Hi Pam,

Thank you for your extra effort on this and your clarification. I really appreciate it. I will share all of this information with our Selectboard at our meeting this evening.

Best Regards,

*Cathy Ainsworth*

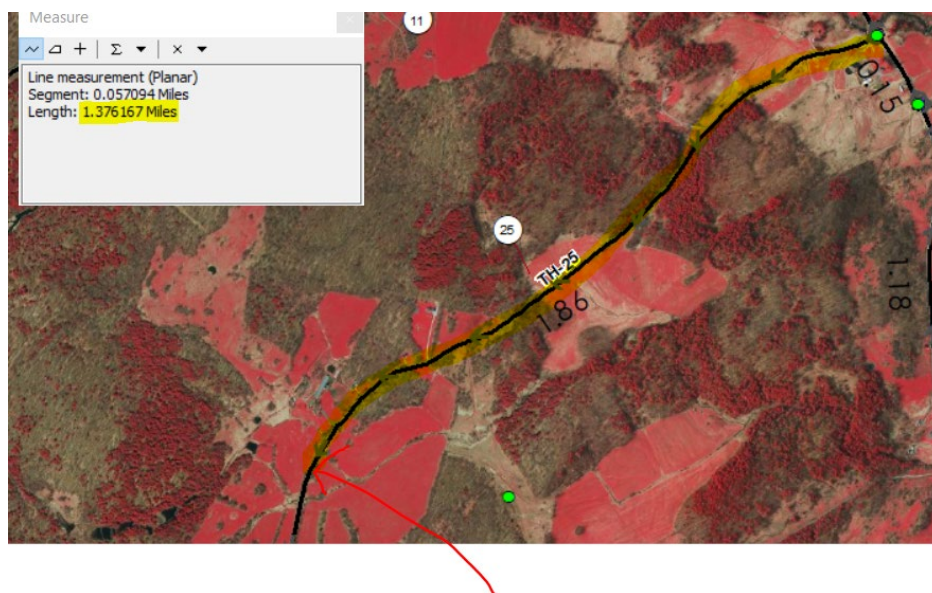
Town Administrator  
Town of Fairfield  
P.O. Box 5  
Fairfield, VT 05455  
(802) 827-3261 ext 101

---

**From:** DeAndrea, Pam <Pam.DeAndrea@vermont.gov>  
**Sent:** Thursday, October 31, 2024 1:46 PM  
**To:** Fairfield Town Administrator <townadmin@fairfieldvermont.us>  
**Subject:** RE: TH-25 and TH-68 follow up

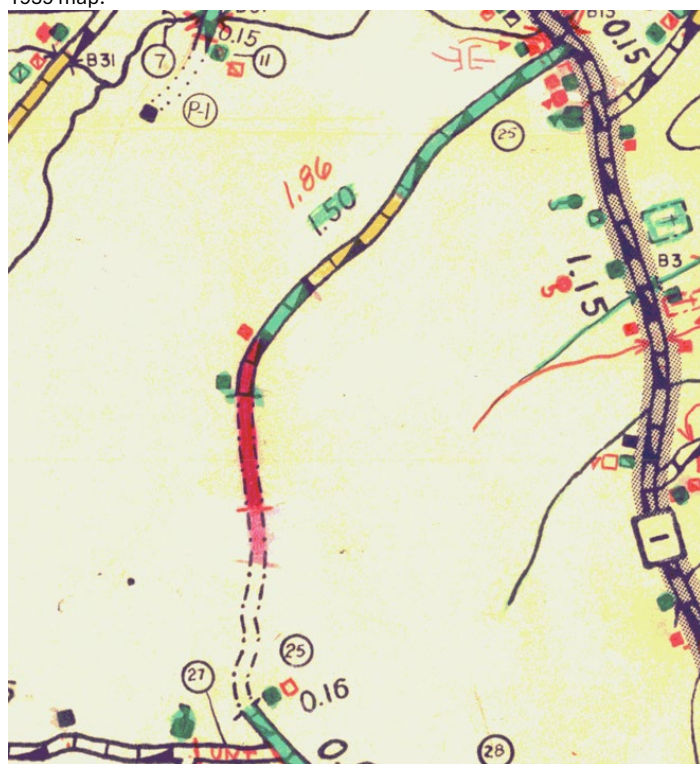
Hi Cathy,

I think this discussion is worth a phone call so I left you a message. In the meantime, I have provided some historical information on TH-25 that we have on file and my measurements. I don't necessarily agree with your findings on measurement. It looks like you used Kilometers on the ANR map as your measure and not miles, which is what we use on the Town Highway maps and what we use as a measure for financing for Towns. From the southern end, we have 0.15 miles of Class 3. Then it turns to Class 4. From the Northern end, we currently have 1.86 miles of Class 3.  $0.15 + 1.86 \text{ miles} = 2.01 \text{ miles}$ , not kilometers. I also do not understand the selectman's comment that the segment has never been included in the Class 3 calculations. It is included now and that is why I am questioning why it should be. It also looks like from historic information I could gather that is used to be part of the Class 3 travelled system. When I measure the road from the north to where your selectman says the Class 4 begins (see red arrow in image below), I get 1.37 miles of Class 3, not 1.86 miles which the Town is currently getting credit for.



From my research, I found that the mileage from the north of the traveled road went from 1.50 miles to 1.86 miles in 1959. See the image below from the 1959 map. The second image below shows a page from the 1959 Record of Mileage Changes that we have on file at VTrans. I have highlighted that for TH-25 0.36 miles were added to the travelled miles, therefore from 1.50 miles to 1.86 miles as indicated on the 1959 map. I have also attached the road measurement inventory from 1985 conducted by the town that indicates the Class 4 for TH-25 starts at 1.81 miles. 1.81 miles is approximately where the red arrow is in the 3<sup>rd</sup> image below. Since 1981, it appears that this is no longer up to Class 3 standards as indicated in the inventory. All of this historical information does not match up with the selectman's statement of the segment in question "never being included in Class 3 mileage".

1959 map:



Record of Mileage Changes 1959:

T	8	0.70	0.69	0.01	REMEAS.
T	24	0.30	0.18	0.12	REMEAS.
T	25	1.66	2.02	0.36	FORMER UNTR. NOW TRAVELLED
T	27	0.35	UNT	0.35	UNTR.
T	32	1.00	0.52	0.48	UNTR.
T	42	1.40	0.86	0.54	UNTR.
T	46	0.12	0.31	0.19	NOW TRAVELLED
T	51	0.85	0.17	0.68	UNTR.
T	62	3.45	2.46	0.99	UNTR.



Then in 1969, TH-25 had 0.15 miles that became untraveled (see image below). This was on the southern end of Town if you look at the 1973 map in the second image below where the travelled miles went from 0.16 miles to 0.01 miles. Also, if you see the 3<sup>rd</sup> and 4<sup>th</sup> images below in the Record of Mileage changes from 1974 and 1977, we have the Class 4 mileage for TH-25 as 0.73 miles and then corrected to 0.59 “per sel” (meaning selectboard). This change is also shown on the Act 63 list and the 1986 map below.

	System	No.	From	To	+	-	
					(Add)	(Deduct)	
CONTINUED							
Mar. 1969	T	25	2.02	1.87		0.15	PARTIAL TRAVELLED TO UNTRAVELLED
	T	31	2.55	2.51		0.04	REMEASUREMENT
	T	32	0.52	0.55	0.03		TRAVEL PARTIAL EXTENDED
	T	34	3.40	3.30		0.10	REMEASUREMENT
	T	38	1.30	1.53	0.23		"

1973 map:





	System	No.	From	To	+	-	Remarks
					(Add)	(Deduct)	
FEB 1976	T	6	UNT.	CLASS 4			0.55 Now CLASS 4 Entire Length
	T	10	0.20	CLASS 4		0.20	Now CLASS 4
	T	19	UNT.	CLASS 4			0.30 Now CLASS 4
	T	20	UNT.	CLASS 4			1.80 CLASS 4, Entire Length
	T	21	0.48	CLASS 4		0.48	0.65 Now CLASS 4
	T	25	NO CHANGE				0.73 UNTERBITION Now CLASS 4
	T	27	UNT.	CLASS 4			0.35 Now CLASS 4
	T	32	0.55	0.48		0.07	0.52 Now CLASS 4

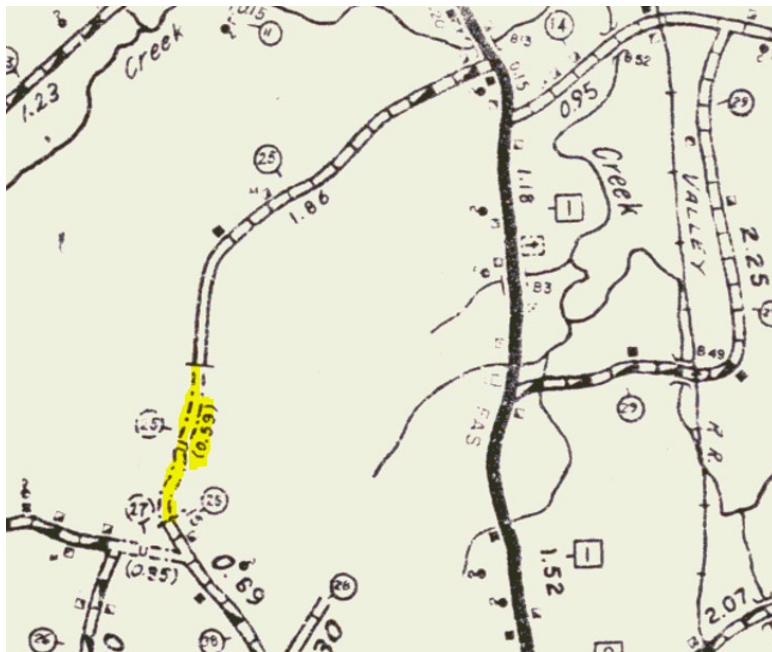
Mar 77	T	13	0.35	0.12		0.23	+0.23 C14 C14 Due to 1976 reinventory
	T	21	0.14	0.46	0.46		-0.46 C14 classification error per Sol Total C14 0.19
	T	25	1.87	2.01	0.14		-0.14 C14 Total C14 0.59 classification error per Sol
	T	41	1.31	1.47	0.16		-0.16 C14 Total C14 0.00 classification error per Sol
	T	42	0.10	0.45	0.35		-0.35 C14 Total C14 0.95 classification error per Sol
							-0.20 C14 Total C14 0.40

Act 63 list:

24	0.32	0.32			
25	1.87	2.01 1.87		0.59 0.73	0.14 C14 → C13 (error corr) 1977
26	3.60	3.60			
27	INT			0.35	

1986 map:





If things have changed since 1986, this is what we need the Town to help clarify for us. For now, we will designate the section as Not up to Class 3 Standards (NUTs), which will essentially add the mileage to the Class 4 category, but the segment should either be reclassified or brought up to Class 3 standards by the Town.

Thank you,

Pam

**Pamela DeAndrea (she/her)** | AOT GIS Professional III  
Policy, Planning & Research Bureau – Mapping Section  
Policy, Planning & Intermodal Development Division  
Vermont Agency of Transportation  
219 N. Main Street | Barre, VT 05641  
[802-793-7555 phone](tel:802-793-7555) | [pam.deandrea@vermont.gov](mailto:pam.deandrea@vermont.gov)  
<http://vtrans.vermont.gov>



Help raise money for Vermonters impacted by flood damage and show your Vermont pride with *Vermont Strong* and *Tough Too* license plates and socks. [Click here to purchase your Vermont Strong gear](#) or visit [DMV.Vermont.gov/VermontStrong23](https://DMV.Vermont.gov/VermontStrong23).

Impacted Vermonters can find resources and referrals by visiting [Vermont.Gov/Flood](https://Vermont.Gov/Flood).

---

**From:** Fairfield Town Administrator <[townadmin@fairfieldvermont.us](mailto:townadmin@fairfieldvermont.us)>

**Sent:** Wednesday, October 30, 2024 1:25 PM

**To:** DeAndrea, Pam <[Pam.DeAndrea@vermont.gov](mailto:Pam.DeAndrea@vermont.gov)>

**Subject:** RE: TH-25 and TH-68 follow up

**EXTERNAL SENDER: Do not open attachments or click on links unless you recognize and trust the sender.**

Hi Pam,

I have received new information from the Selectboard. Firstly, I apologize that I got the segments wrong. They discussed making the the Lapland loop extension class 4 (and we will revisit to verify at our next meeting).

Regarding the Menard Rd., one of the long-time selectboard members said that the measurements of this road came up in discussion many years ago and he asked me to look at maps. He said that the segment of road you identified, between the driveway and yellow dot, should be class 4 already because that stretch of road had never been included in the Class 3 measurements from the state. To verify, I went to all of the maps we have as well as the ANR maps and the measurements were never changed. I also measured via the

ANR map and have attached the measurements from ANR to this email. Menard Rd (#25) has always been calculated as 2.01 Class 3 road- I measured from North rd to the Driveway on the ANR map and the distance is 2.01. Then, if you measure, 0.59 from the opposite end of Menard Rd, at the end of Castle road, you end up at the yellow dot you highlighted below. The section you want us to “reclassify” seems to have never been included in the class 3 calculations for the Town. We would like you to include this distance in the class 4 roads count on the next map version. The Selectboard does not believe we should need to go through the “change from class 3” process below to do so.

Please let me know your thoughts.

Thank you,

*Cathy Ainsworth*

Town Administrator

Town of Fairfield

P.O. Box 5

Fairfield, VT 05455

(802) 827-3261 ext 101

---

**From:** DeAndrea, Pam <[Pam.DeAndrea@vermont.gov](mailto:Pam.DeAndrea@vermont.gov)>

**Sent:** Thursday, October 17, 2024 2:25 PM

**To:** Fairfield Town Administrator <[townadmin@fairfieldvermont.us](mailto:townadmin@fairfieldvermont.us)>

**Cc:** Linda Hodet <[linda@fairfieldvermont.us](mailto:linda@fairfieldvermont.us)>

**Subject:** RE: TH-25 and TH-68 follow up

You don't often get email from [pam.deandrea@vermont.gov](mailto:pam.deandrea@vermont.gov). [Learn why this is important](#)

Hi Cathy,

Yes, thank you so much! Let me know what the plan is.

Here is the link that outlines the requirements for reclassification [Highways \(vermont.gov\)](https://www.vermont.gov/highways), but in general the town needs to:

- 30 days public notice of site visit and public hearing
- Notify adjacent landowners via mail
- Notify Planning Commission, if applicable
- Conduct site visit
- Hold public hearing (can be at a selectboard meeting) where decision of reclassification is made
- Provide VTtrans with documentation (notices, documentation of site visit, minutes from hearing, map showing what is reclassified)

If this is conducted before the Mileage Certificates go out in 2025, we can preload the certificate for you with the Mileage changes for Class 3 and Class 4 roads. If not, you can just include all the documentation and put the information on the Mileage Certificate yourself for us in 2025.

Thank you!

Pam

**Pamela DeAndrea (she/her)** | AOT GIS Professional III

Policy, Planning & Research Bureau – Mapping Section

Policy, Planning & Intermodal Development Division

Vermont Agency of Transportation

219 N. Main Street | Barre, VT 05641

802-793-7555 phone | [pam.deandrea@vermont.gov](mailto:pam.deandrea@vermont.gov)

<http://vttrans.vermont.gov>



Help raise money for Vermonters impacted by flood damage and show your Vermont pride with *Vermont Strong* and *Tough Too* license plates and socks. [Click here to purchase your Vermont Strong gear](#) or visit [DMV.Vermont.gov/VermontStrong23](https://DMV.Vermont.gov/VermontStrong23).

Impacted Vermonters can find resources and referrals by visiting [Vermont.Gov/Flood](https://Vermont.Gov/Flood).

---

**From:** Fairfield Town Administrator <[townadmin@fairfieldvermont.us](mailto:townadmin@fairfieldvermont.us)>

**Sent:** Tuesday, October 15, 2024 5:10 PM

**To:** DeAndrea, Pam <[Pam.DeAndrea@vermont.gov](mailto:Pam.DeAndrea@vermont.gov)>

Cc: Linda Hodet <[linda@fairfieldvermont.us](mailto:linda@fairfieldvermont.us)>

Subject: RE: TH-25 and TH-68 follow up

**EXTERNAL SENDER: Do not open attachments or click on links unless you recognize and trust the sender.**

Hi,

Thank you for reaching out. We discussed improving the Menard Rd section and conducting a class 4 change to the Lapland Extension. I will check in on how we are doing with Menard.

Could you remind me the process of reclassifying to a class 4 rd.?

*Cathy Ainsworth*

Town Administrator  
Town of Fairfield  
P.O. Box 5  
Fairfield, VT 05455  
(802) 827-3261 ext 101

---

**From:** DeAndrea, Pam <[Pam.DeAndrea@vermont.gov](mailto:Pam.DeAndrea@vermont.gov)>

**Sent:** Monday, October 14, 2024 3:11 PM

**To:** Fairfield Town Administrator <[townadmin@fairfieldvermont.us](mailto:townadmin@fairfieldvermont.us)>

**Cc:** Linda Hodet <[linda@fairfieldvermont.us](mailto:linda@fairfieldvermont.us)>

**Subject:** TH-25 and TH-68 follow up

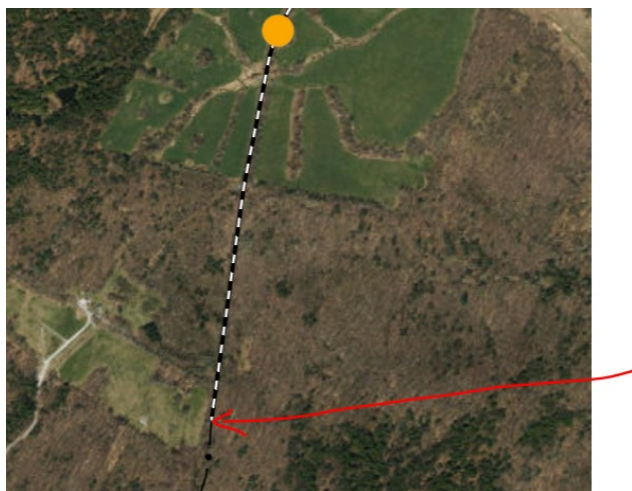
Some people who received this message don't often get email from [pam.deandrea@vermont.gov](mailto:pam.deandrea@vermont.gov). [Learn why this is important](#)

Good afternoon Cathy,

I am following up on emails between us last year regarding TH-25 (Menard Rd) and TH-68 (Lapland Rd) in Fairfield. I think you were going to check with the Road Foreman on these and get back to me.

For TH-25, it looks like we have a portion that is classified as Class 3 but is not up to Class 3 standards. Wondering if the road should be Class 3 until just after the farm driveway (circled in red) or the orange dot in the image below and then Class 4 after that. If so, the Town should reclassify that section of road past the farm or bring it up to class 3 standards until the location where the Class 4 begins, which we have mapped as around 0.5 miles south of the orange dot (see red arrow in 2nd image below).





The other issue I think you were going to check with Maurice on was TH-68 (Lapland Ext). Remember there is a section that is we have as Class 3 but currently Not up to Class 3 Standards (NUTs). Is this section up to Class 3 standards now? If not, the town would also either need to reclassify that portion of road (see yellow highlight in image below) or bring it up to Class 3 standards. It looks like the Town might maintain it up to the turn-around (red arrow in 2<sup>nd</sup> image below).



Let me know what Maurice says and get back to me on what the town intends to do moving forward.

Thank you!

Pam

**From:** DeAndrea, Pam  
**To:** Fairfield Town Administrator  
**Subject:** RE: TH-25 possible NUTs and TH-68 NUTs status and CL3/CL4 break  
**Date:** Friday, September 1, 2023 1:51:00 PM  
**Attachments:** [image002.png](#)  
[image003.png](#)  
[image004.png](#)  
[image005.png](#)  
[image006.png](#)  
[image007.png](#)  
[image008.png](#)

Hi Cathy,

Yes, the highlighted section of the map is showing that portion of legally classified Class 3 road that is not up to class 3 standards (NUTs). VTrans essentially treats this as Class 4, but the Town either needs to bring it up to Class 3 standards or reclassify it. We have no record of the Town ever reclassifying it to Class 4, that is why we have it marked as "NUTs". The symbology of untraveled has to do with its surface type conditions and not the legal classification.

Here is the excerpt from Legislation that explains the requirements for Class 3 Town Highways:

(3) Class 3 town highways:

(A) Class 3 town highways are all traveled town highways other than class 1 or 2 highways. The selectmen, after conference with a representative of the Agency, shall determine which highways are class 3 town highways.

(B) The minimum standards for class 3 highways are a highway negotiable under normal conditions all seasons of the year by a standard manufactured pleasure car. This would include sufficient surface and base, adequate drainage, and sufficient width capable to provide winter maintenance, except that based on safety considerations for the traveling public and municipal employees, the selectboard shall, by rule adopted under 24 V.S.A. chapter 59, and after following the process for providing notice and hearing in section 709 of this title, have authority to determine whether a class 3 highway, or section of highway, should be plowed and made negotiable during the winter. However, a property owner aggrieved by a decision of the selectboard may appeal to the Transportation Board pursuant to subdivision 5(d)(9) of this title.

(C) A highway not meeting these standards may be reclassified as a provisional class 3 highway if within five years of the determination it will meet all class 3 highway standards.

Thank you and let me know if you have more questions,

Pam

**Pamela DeAndrea (she/her)** | AOT GIS Professional III  
 Policy, Planning & Research Bureau – Mapping Section  
 Policy, Planning & Intermodal Development Division  
 Vermont Agency of Transportation  
 219 North Main Street | Barre, VT 05641  
 802-793-7555 phone | [pam.deandrea@vermont.gov](mailto:pam.deandrea@vermont.gov)  
<http://vtrans.vermont.gov>

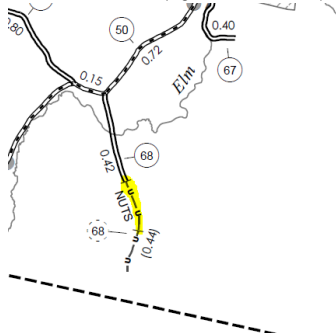


**From:** Fairfield Town Administrator <townadmin@fairfieldvermont.us>  
**Sent:** Friday, September 1, 2023 1:31 PM  
**To:** DeAndrea, Pam <Pam.DeAndrea@vermont.gov>  
**Subject:** RE: TH-25 possible NUTs and TH-68 NUTs status and CL3/CL4 break

**EXTERNAL SENDER: Do not open attachments or click on links unless you recognize and trust the sender.**

Hi Pam

Could you clarify- You said that the highlighted bit below is classified as class 3 and had never gone through the process of becoming class 4? I see that the map is showing that is untraveled, but it would be classified as class 3? Just trying to understand the map.



*Cathy Ainsworth*  
 Town Administrator  
 Town of Fairfield  
 P.O. Box 5  
 Fairfield, VT 05455  
 (802) 827-3261 ext 101

**From:** DeAndrea, Pam <[Pam.DeAndrea@vermont.gov](mailto:Pam.DeAndrea@vermont.gov)>  
**Sent:** Friday, September 1, 2023 11:43 AM  
**To:** Fairfield Town Administrator <[townadmin@fairfieldvermont.us](mailto:townadmin@fairfieldvermont.us)>  
**Cc:** AOT - Mileage Certificates <[AOT.MileageCertificates@vermont.gov](mailto:AOT.MileageCertificates@vermont.gov)>; Linda Hodet <[linda@fairfieldvermont.us](mailto:linda@fairfieldvermont.us)>  
**Subject:** TH-25 possible NUTs and TH-68 NUTs status and CL3/CL4 break

Some people who received this message don't often get email from [pam.deandrea@vermont.gov](mailto:pam.deandrea@vermont.gov). [Learn why this is important](#)

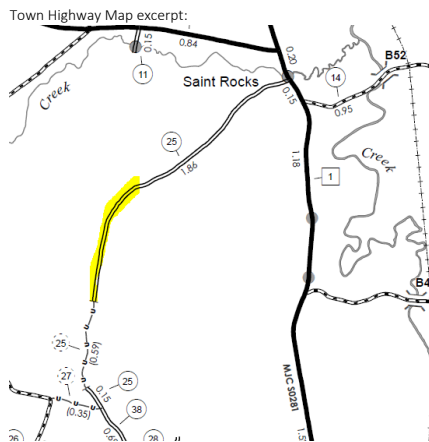
Good morning Cathy,

It has recently come to our attention that the entirety of the Class 3 portion of TH-25 (Menard Rd) may not be maintained to Class 3 standards. The road looks like it may not be up to Class 3 standard (NUTs) past the farm shown in the imagery below. If you look at the second image you can see the excerpt from the Town Highway map showing the current mapped Class 3 portion that goes into the annual mileage (1.86 mi) for Town funding. Perhaps the untraveled Class 4 portion needs to be extended north and removed from the Class 3 portion as highlighted in the image.



Below I have also included an email from this May that I have not received word yet on regarding TH-68. Do you need to reach out to the Highway Department and the Selectboard to see what the maintenance/class of these road segments should be? Here is the link in Vermont Highways Legislation that outline requirements for Class 3 roads: <https://legislature.vermont.gov/statutes/section/19/003/00302>.

If the Town does not intend to bring it these road segments to Class 3 standards, we do ask that the Town go through the formal process for reclassification to Class 4 or Legal Trail or to discontinue if that is your intent. Let us know what you plan is and here is the link for the process for reclassification or discontinuance: <https://legislature.vermont.gov/statutes/chapter/19/007>.



Thank you,

Pam

**Pamela DeAndrea (she/her)** | AOT GIS Professional III  
Policy, Planning & Research Bureau – Mapping Section  
Policy, Planning & Intermodal Development Division  
Vermont Agency of Transportation  
219 North Main Street | Barre, VT 05641  
802-793-7555 phone | [pam.deandrea@vermont.gov](mailto:pam.deandrea@vermont.gov)  
<http://vtrans.vermont.gov>



**From:** DeAndrea, Pam  
**Sent:** Tuesday, May 2, 2023 1:14 PM  
**To:** Fairfield Town Administrator <[townadmin@fairfieldvermont.us](mailto:townadmin@fairfieldvermont.us)>  
**Cc:** [linda@fairfieldvermont.us](mailto:linda@fairfieldvermont.us); AOT - Mileage Certificates <[AOT.MileageCertificates@vermont.gov](mailto:AOT.MileageCertificates@vermont.gov)>  
**Subject:** Town Highway 68 (TH-68, Lapland Ext.) NUTs status and CL3/CL4 break

Good afternoon Cathy,

I was looking at some updates to surface types for roads in Fairfield and I noticed something related to TH-68 (Lapland Ext.) that I was wondering if you could help shed some light on for me or forward to Maurice for us.

According to the Town Highway map for Fairfield, TH-68 has a section that is classified as Class 3, but designated as not up to class 3 standards (NUTs) (see highlighted portion in 1<sup>st</sup> image below). RPC staff at Northwest Regional Planning Commission let us know that the surface type for this area should be gravel and when I looked at street map imagery, I could clearly see that it is gravel up to a driveway and that there is a turn-around shortly before there (see next two images). Does the town maintain up to the turn-around (yellow highlight in second image) or to the red arrow where it looks like there is a separation of driveway and road? The third image below shows the street view that shows the turn-around and then a change in gravel type just past that so I wonder if the



VERMONT AGENCY OF TRANSPORTATION  
PROJECT PLANNING DIVISION  
MAPPING AND ROAD INVENTORY SECTION

TOWN Taunton

COUNTY \_\_\_\_\_ HWY. DIST. NO. \_\_\_\_\_

ROAD SYSTEM & NO. T-23

SHEET NO. 1 OF 2 DATE 5/22/85

SURFACE TYPE & WIDTH	SHOULDER TYPE & WIDTH		SIDEWALK TYPE & WIDTH		DITCHES	CONDITION	ROAD CLASS	REMARKS
	L.T.	R.T.	L.T.	R.T.				
C-8								T-25 UNT CL-4 ↑ 181  127 F-1  120 H/TR  110 H  101 SD  0 11 A/  CL 2' ← 0 00 → CL 7'

VERMONT AGENCY OF TRANSPORTATION  
PROJECT PLANNING DIVISION  
MAPPING AND ROAD INVENTORY SECTION

RECORDER B. D. Jones

TOWN Fairfax

COUNTY \_\_\_\_\_ HWY. DIST. NO. \_\_\_\_\_

ROAD SYSTEM & NO. 7-29

TITLE TEMP

SHEET NO. 2 OF 2 DATE 5/22/85

[illegible]

T-25 UNT. CL 4

H

014

H

14

D-14

127

0 05

V T-38