

1/17/2025

VTrans Mapping Section

District 5
 Certcode 0412-0

**CERTIFICATE OF HIGHWAY MILEAGE
 YEAR ENDING FEBRUARY 10, 2025**

Fill out form, make and file a copy with the Town Clerk, and submit the Mileage Certificate on or before February 20, 2024 to: Vermont Agency of Transportation, Division of Policy, Planning and Intermodal Development, Mapping Section via email to: aot.mileagecertificates@vermont.gov or if necessary via mail to: VTrans PPAID - Mapping Section, 219 North Main Street, Barre VT 05641.

We, the members of the legislative body of SAINT GEORGE in CHITTENDEN County on an oath state that the mileage of highways, according to Vermont Statutes Annotated, Title 19, Section 305, added 1985, is as follows:

PART I - CHANGES TOTALS - Please fill in and calculate totals.

Town Highways	Previous Mileage	Added Mileage	Subtracted Mileage	Total	Scenic Highways
Class 1	0.000				
Class 2	0.370	+0.018	-0.013	0.375	
Class 3	0.87				
State Highway	3.693				
Total	4.933	+0.018	-0.013	4.938	
* Class 1 Lane	0.000				
* Class 4	0.72				
* Legal Trail	0.00				

* Mileage for Class 1 Lane, Class 4, and Legal Trail classifications are NOT included in total.

PART II - INFORMATION AND DESCRIPTION OF CHANGES SHOWN ABOVE.

1. NEW HIGHWAYS: Please attach Selectmen's "Certificate of Completion and Opening".

2. DISCONTINUED: Please attach SIGNED copy of proceedings (minutes of meeting).

3. RECLASSIFIED/REMEASURED: Please attach SIGNED copy of proceedings (minutes of meeting).

-0.013 mi CL2 TH-2 approach from South Brownell Rd to VT-116 (S03330412EA001) remeasured
 +0.018 mi CL2 TH-2 (South Brownell Rd) main line (S03330412) remeasured

4. SCENIC HIGHWAYS: Please attach a copy of order designating/discontinuing Scenic Highways.

IF THERE ARE NO CHANGES RECORDED THIS YEAR: Place an X in the box and sign below. ☐

PART III - SIGNATURES - PLEASE SIGN.

Signatures of Selectmen/ Aldermen/ Trustees:

Supp. Fischer, Chair
John Scott

Paul Cole Vice Chair
Rob Crites

Signature of T/C/V Clerk:

M. Harnes

Date Filed: 1/16/2025

Please sign ORIGINAL and return it for Transportation signature.

AGENCY OF TRANSPORTATION APPROVAL: Signed copy will be returned to T/C/V Clerk.

APPROVED: *Johnathan Croft*
 Representative, Agency of Transportation
 8B1F350F309C4C9...

DATE: 5/15/2025

DS
RMA

-0.013 mi CL2 TH-2 approach from
South Brownell Rd to VT-116
(S03330412EA001) remeasured
(CL2 from 0.07 to 0.057 mi)

+0.018 mi CL2 TH-2 (South Brownell
Rd) main line (S03330412) remeasured
(CL2 from 0.57 to 0.075 mi)

WILLISTON
(0417-0)

TH-5 S BROWNELL RD

TH-14 TOWN
HWY 7

TH-2 TOWN
HWY 7

TH-5 TOWN
HWY 7

TH-2 S BROWNELL RD

SHELBURNE
(0413-0)

SAINT
GEORGE
(0412-0)

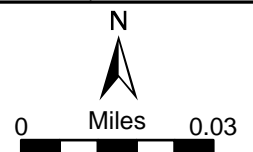
TH-2 TOWN HWY 2



Mileage Certificate Changes 2025 SAINT GEORGE

Mapping Section
Division of Policy and Planning
Vermont Agency of Transportation -- May 9, 2025

(CTUA:0412-0)
(CERTCODE:0412-0)



From: [Croft, Johnathan](#)
To: [Alley, Kerry](#); [DeAndrea, Pam](#)
Subject: St. George, Shelburne and Williston Mileage Changes - South Brownell Road and Approach
Date: Friday, December 13, 2024 2:35:20 PM
Attachments: [Official highway map - three towns at VT116 and South Brownell Rd.pdf](#)
[image001.png](#)

Good afternoon Kerry and Pam,

To improve the measures of South Brownell Road and the approach that intersects VT-116, I would like to do remeasurements for Shelburne, St. George, and Williston and have these changes included in the 2025 certs. Ron Rodjenski illuminated this issue and did a good job defining what the measures should be. I made corrections to the town boundary and am taking the mileage out to the 1/1000th of a mile, which provides subtle differences in the mileage the Ron calculated. Here are the changes that I would like to have incorporated in the cert to make the mileage better:

West Approach

Town Mileage	TH #	TWN_LR New Mileage	Current Delta Miles
Shelburne 0.023	TH-14	S03330413EA001 -0.007	0.030
St. George 0.027	TH-2	S03330412EA001 -0.013	0.040
Williston 0.018	TH-5	S03330417EA001 -0.022	0.040

South Brownell Road Mainline

St. George 0.048	TH-2	S03330412	0.030
	+0.018		
Williston 3.846	TH-5	(S03330417 – portion)	3.840
	+0.006	(this is an item to discuss on whether we want to make this change on mainline)	

I would like to check in early next week and go over these items and define a path forward for these changes, so we can get this in the queue for the certs.

Johnathan

Johnathan Croft | Mapping Section Chief
Policy, Planning & Research Bureau – Mapping Section
Policy, Planning & Intermodal Development Division
Vermont Agency of Transportation
219 North Main Street | Barre, VT 05641
[802-828-2600 phone](tel:802-828-2600) | johnathan.croft@vermont.gov
<http://vtrans.vermont.gov>



Help raise money for Vermonters impacted by flood damage and show your Vermont pride with *Vermont Strong* and *Tough Too* license plates and socks. [Click here to purchase your Vermont Strong gear](#) or visit [DMV.Vermont.gov/VermontStrong23](https://dmv.vermont.gov/VermontStrong23).

Impacted Vermonters can find resources and referrals by visiting Vermont.Gov/Flood.

From: Ron Rodjenski <ron@stoneshoremc.com>
Sent: Sunday, June 30, 2024 10:27 AM
To: Croft, Johnathan <Johnathan.Croft@vermont.gov>
Subject: Mileage verification

You don't often get email from ron@stoneshoremc.com. [Learn why this is important](#)

EXTERNAL SENDER: Do not open attachments or click on links unless you recognize and trust the sender.

Hi Johnathan;

I'm working with the town of St George on their road inventory and mileage certifications.

Two topics:

TH 08 (NUTS) Class ¾

The board will be reviewing this and hopes to clear this up in 2025 Certificate.

TH 02 Class 2

Three town general highway maps have parts of this "Y intersection" bisected by a 3 town lines - very unusual, so attached request to help us resolve official mapping depiction and mileage (i.e. mapped mileage exceeds field mileage).

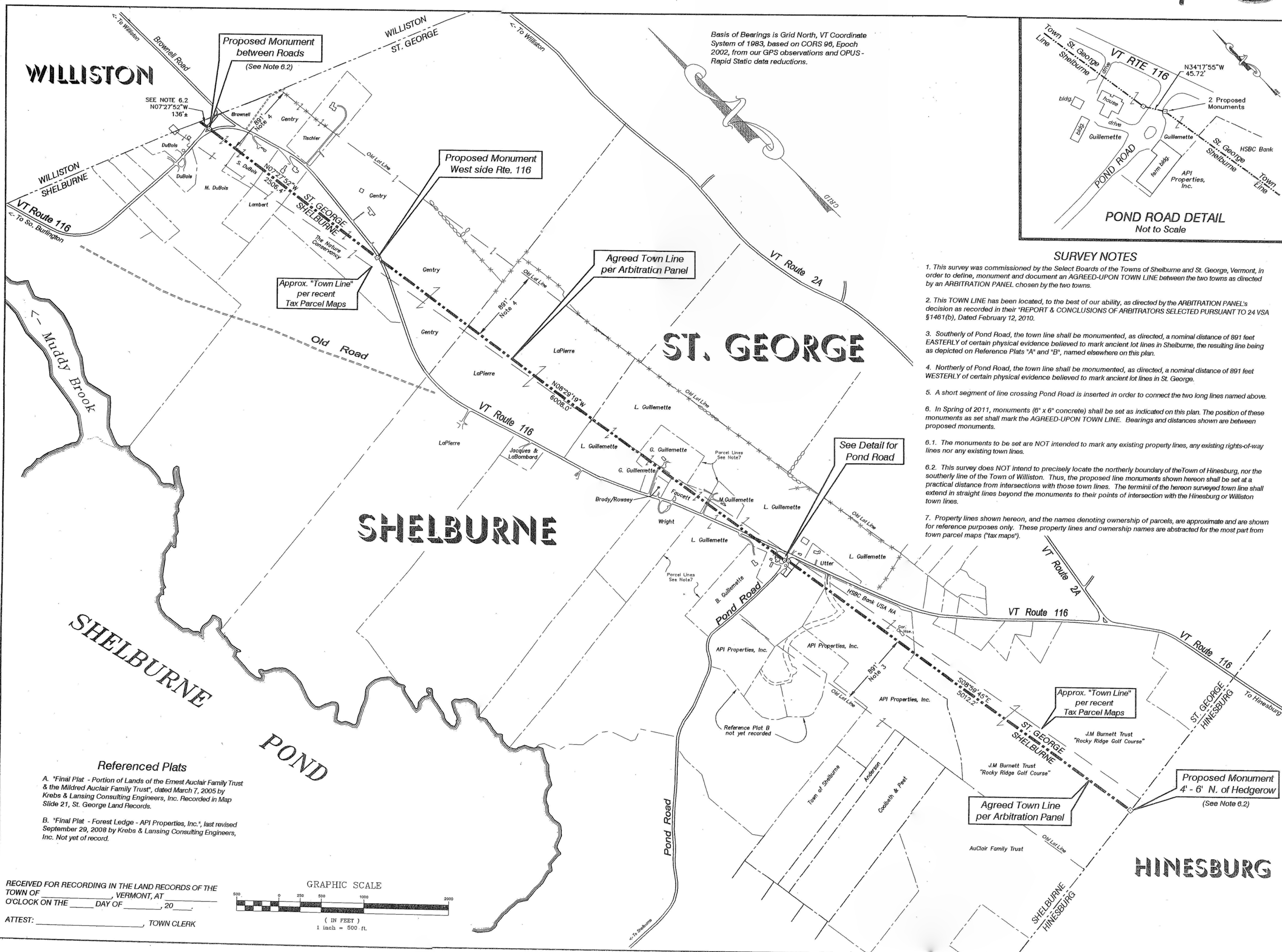
Ron

Ron Rodjenski

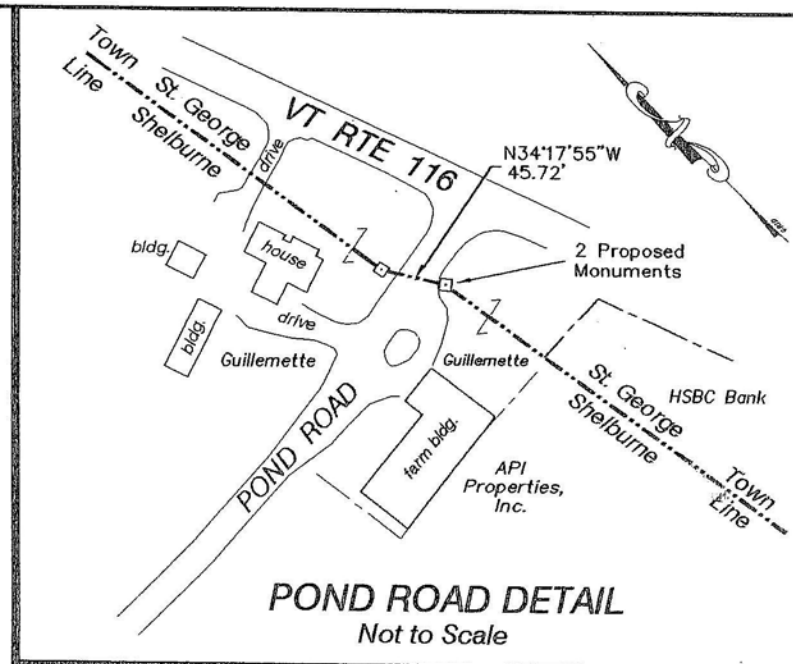
RECEIVED FOR RECORD 27 JULY 2011 AT 3^{PM} AND RECORDED AT
MAP SLIDE 787A OF THE SHELBURNE LAND RECORDS.

ATTEST: *Colleen T. Harg, Town Clerk*

787A

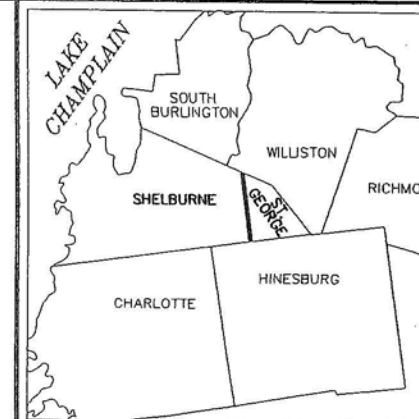


Basis of Bearings is Grid North, VT Coordinate System of 1983, based on CORS 96, Epoch 2002, from our GPS observations and OPUS-Rapid Static data reductions.

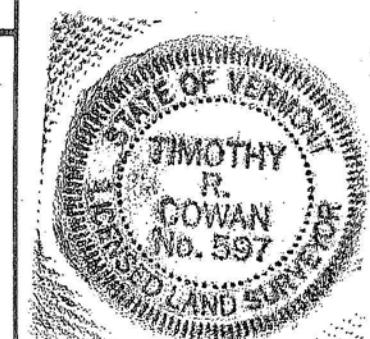


SURVEY NOTES

1. This survey was commissioned by the Select Boards of the Towns of Shelburne and St. George, Vermont, in order to define, monument and document an AGREED-UPON TOWN LINE between the two towns as directed by an ARBITRATION PANEL chosen by the two towns.
2. This TOWN LINE has been located, to the best of our ability, as directed by the ARBITRATION PANEL's decision as recorded in their "REPORT & CONCLUSIONS OF ARBITRATORS SELECTED PURSUANT TO 24 VSA §1461(b)", Dated February 12, 2010.
3. Southerly of Pond Road, the town line shall be monumented, as directed, a nominal distance of 891 feet EASTERLY of certain physical evidence believed to mark ancient lot lines in Shelburne, the resulting line being as depicted on Reference Plats "A" and "B", named elsewhere on this plan.
4. Northerly of Pond Road, the town line shall be monumented, as directed, a nominal distance of 891 feet WESTERLY of certain physical evidence believed to mark ancient lot lines in St. George.
5. A short segment of line crossing Pond Road is inserted in order to connect the two long lines named above.
6. In Spring of 2011, monuments (6" x 6" concrete) shall be set as indicated on this plan. The position of these monuments as set shall mark the AGREED-UPON TOWN LINE. Bearings and distances shown are between proposed monuments.
- 6.1. The monuments to be set are NOT intended to mark any existing property lines, any existing rights-of-way lines nor any existing town lines.
- 6.2. This survey does NOT intend to precisely locate the northerly boundary of the Town of Hinesburg, nor the southerly line of the Town of Williston. Thus, the proposed line monuments shown hereon shall be set at a practical distance from intersections with those town lines. The termini of the hereon surveyed town line shall extend in straight lines beyond the monuments to their points of intersection with the Hinesburg or Williston town lines.
7. Property lines shown hereon, and the names denoting ownership of parcels, are approximate and are shown for reference purposes only. These property lines and ownership names are abstracted for the most part from town parcel maps ("tax maps").



LOCATION MAP
NOT TO SCALE



To the best of my knowledge and belief this plat depicts the results of a survey conducted by me as described in "Survey Notes" hereon, based upon our analysis of evidence found in the field. This certification does not extend to the location of individual property lines which are shown hereon solely for reference purposes. This plat is in substantial compliance with 17 VSA 1403, "Recording of Land Plats". This statement valid only when accompanied by my original signature and seal.

Timothy R. Cowan
Timothy R. Cowan V.T.S. 597

SURVEYORS:



CIVIL ENGINEERING ASSOCIATES, INC.
10 MANSHFIELD VIEW LN., SO. BURLINGTON, VT 05403
802-884-2323 web: www.cae-vt.com

COPYRIGHT © 2011 - ALL RIGHTS RESERVED

CHECKED
TRC

DATE	BY	REVISION

TOWN LINE AGREEMENT
BETWEEN TOWNS OF:
**SHELBURNE &
ST. GEORGE**

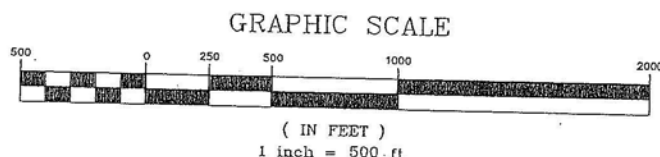
CHITTENDEN COUNTY
STATE of VERMONT

DATE
MAR. 9, 2011
ORIGINAL SCALE
1" = 500'
PROJ. NO.
09186

DRAWING NUMBER
TL1
SHEET 1 of 1

Referenced Plats
A. "Final Plat - Portion of Lands of the Ernest Auclair Family Trust & the Mildred Auclair Family Trust", dated March 7, 2005 by Krebs & Lansing Consulting Engineers, Inc. Recorded in Map Slide 21, St. George Land Records.
B. "Final Plat - Forest Ledge - API Properties, Inc.", last revised September 29, 2008 by Krebs & Lansing Consulting Engineers, Inc. Not yet of record.

RECEIVED FOR RECORDING IN THE LAND RECORDS OF THE
TOWN OF _____ VERMONT, AT
O'CLOCK ON THE _____ DAY OF _____, 20____
ATTEST: _____ TOWN CLERK



Alley, Kerry

From: Ron Rodjenski <ron@stoneshoremc.com>
Sent: Monday, July 1, 2024 3:16 PM
To: Croft, Johnathan
Cc: AOT - Mileage Certificates
Subject: Re: Mileage verification

EXTERNAL SENDER: Do not open attachments or click on links unless you recognize and trust the sender.

Thanks for taking a look, and I'll need to check in with the town officials about additional town line information with Williston - or maybe some recent survey work on private parcels along the town line.

Not sure about an ETA on supplemental data/info to you, but will start that today with the Selectboard Chair Sarah Tischler.

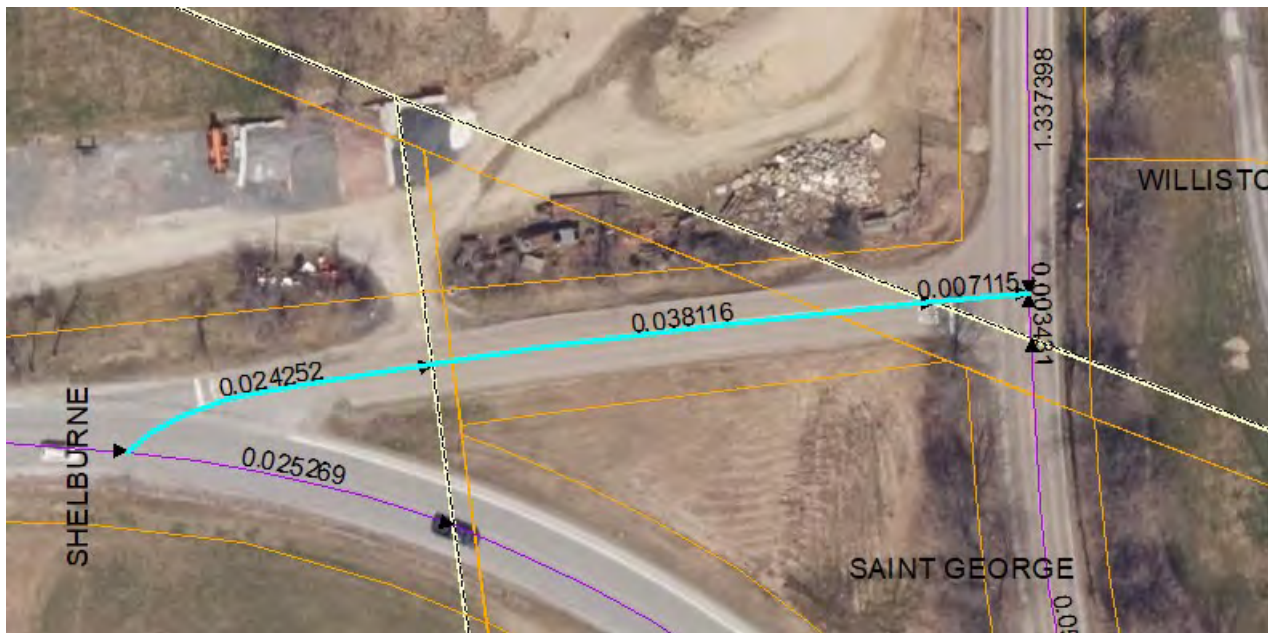
Ron

Ron Rodjenski
Project Manager
Stone Shore Municipal Consulting, LLC
246 Hinesburg Road, Richmond, VT 05477
Mobile: 802.316.6921
ron@stoneshoremc.com
www.stoneshoremc.com

From: Croft, Johnathan <Johnathan.Croft@vermont.gov>
Sent: Monday, July 1, 2024 2:55 PM
To: Ron Rodjenski <ron@stoneshoremc.com>
Cc: AOT - Mileage Certificates <AOT.MileageCertificates@vermont.gov>
Subject: RE: Mileage verification

Good afternoon Ron,

After a quick look at the approaches to VT-116 that make up the "Y" in Saint George, Williston, and Shelburne, I am seeing that the town boundaries that we have mapped differ from the parcel boundaries, which is introducing some mileage differences.



We need to ensure that we are mapping the town boundaries for Saint George, Williston and Shelburne as accurately as we can, and then be able to define the measures for these segments of highway for the west approach and the south approach.

I have the survey that was done by Tim Cowan dated March 9, 2011 for the Saint George – Shelburne town line. Has there been a more recent survey done and is this one valid for this boundary? Also, is there any survey information for the Saint George – Williston boundary that can be used to more accurately map this boundary?

I will be reaching out with any additional questions and when I get the boundaries better represented, with will then aid in improving the mileage values. Also, if you have any other information that will aid in getting this highway segment better mapped, please do not hesitate to send it along.

Johnathan

Johnathan Croft | Mapping Section Chief
Policy, Planning & Research Bureau – Mapping Section
Policy, Planning & Intermodal Development Division
Vermont Agency of Transportation
219 North Main Street | Barre, VT 05641
802-828-2600 phone | johnathan.croft@vermont.gov
<http://vtrans.vermont.gov>



Help raise money for Vermonters impacted by flood damage and show your Vermont pride with *Vermont Strong* and *Tough Too* license plates and socks. [Click here to purchase your Vermont Strong gear](#) or visit DMV.Vermont.gov/VermontStrong23.

Impacted Vermonters can find resources and referrals by visiting Vermont.Gov/Flood.

From: Ron Rodjenski <ron@stoneshoremc.com>
Sent: Sunday, June 30, 2024 10:27 AM
To: Croft, Johnathan <Johnathan.Croft@vermont.gov>
Subject: Mileage verification

You don't often get email from ron@stoneshoremc.com. [Learn why this is important](#)

EXTERNAL SENDER: Do not open attachments or click on links unless you recognize and trust the sender.

Hi Johnathan;

I'm working with the town of St George on their road inventory and mileage certifications.

Two topics:

TH 08 (NUTS) Class $\frac{3}{4}$

The board will be reviewing this and hopes to clear this up in 2025 Certificate.

TH 02 Class 2

Three town general highway maps have parts of this "Y intersection" bisected by a 3 town lines - very unusual, so attached request to help us resolve official mapping depiction and mileage (i.e. mapped mileage exceeds field mileage).

Ron
Ron Rodjenski
Project Manager
Stone Shore Municipal Consulting, LLC
246 Hinesburg Road, Richmond, VT 05477
Mobile: 802.316.6921
ron@stoneshoremc.com
www.stoneshoremc.com

Request to review highway mileage – St. George, VT

Ron Rodjenski, Road Consultant to St George Selectboard

Location:

South bound on TH05 (South Brownell Road in Williston), the road “Y’s” westerly and continues straight southerly. The “West Y” and “South Y”.

The West Y - This section is on three highway maps and aerial image shows it **as 362 feet**. Collectively, the three towns “mapped” lengths = **633 feet**.

Shelburne 2023 TH14, 0.03 miles (158 feet)

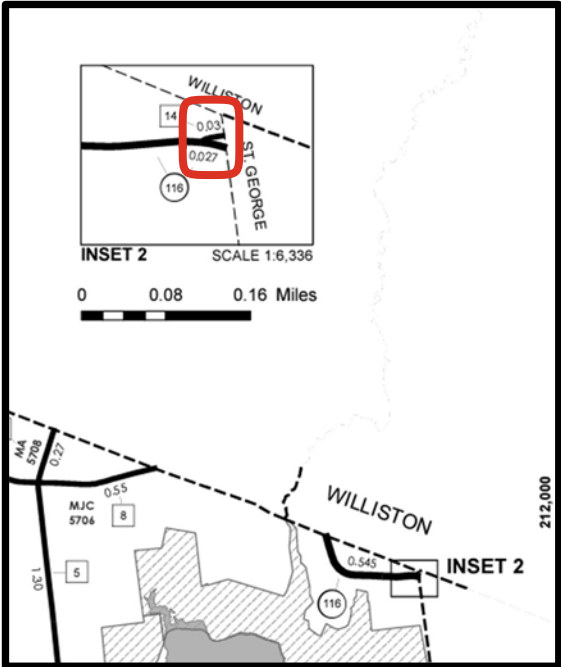
Williston 2022 TH05, 0.05 miles (264 feet)

St. George 2023 TH02, 0.04 miles (211 feet)

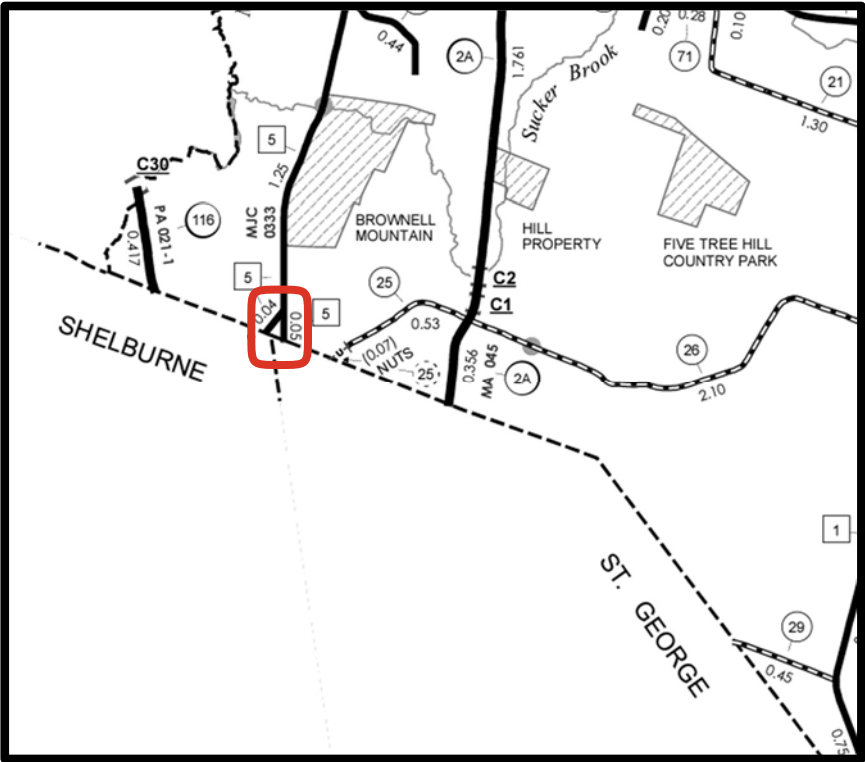
The South Y – Only Williston and St George are involved, split by town line again, 276 feet.

In the field, the paving VT-116 (west end of the “West Y”) extends out to the edge of ROW - a long apron. Presently four parties are appearing to be responsible for paving one 362 foot length of highway.



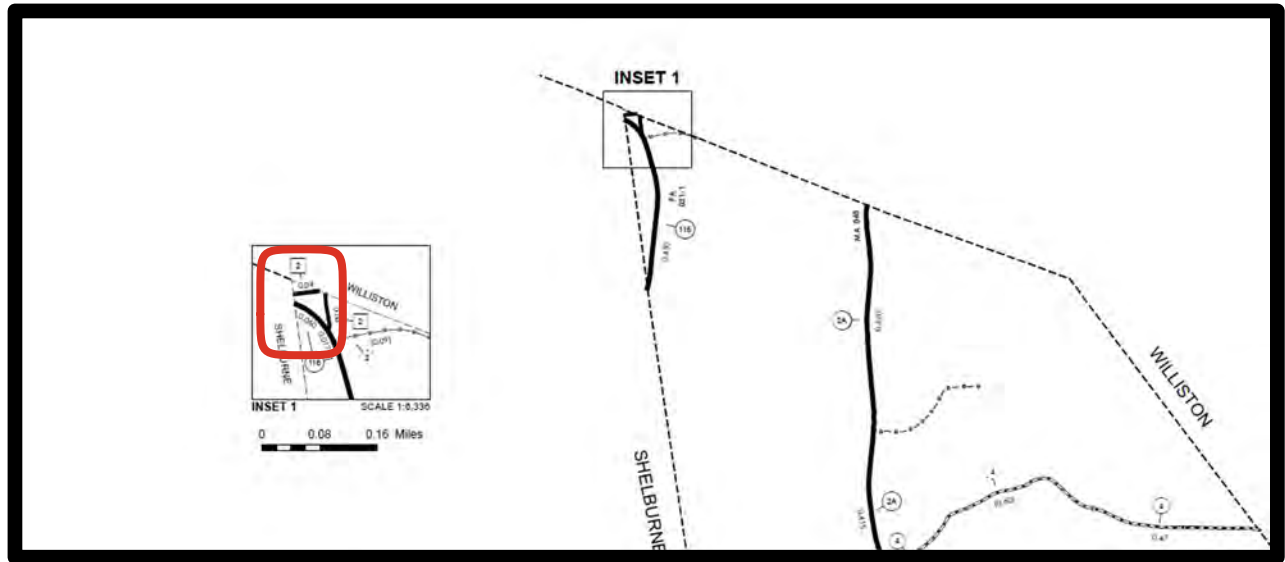


Shelburne Highway Map



Williston Highway Map

St George Highway Map



Using ANR Natural Resource Map to set town line for measuring (unsure if there is a survey):

The lengths would be:

West Y:

Williston 85 feet [0.02 miles]

St. George 150 feet [0.03 miles]

Shelburne 125 feet [0.02 miles]

Total 360 feet

South Y:

St. George from VT-116 to town line (moving northerly) – 260 feet [0.05 miles]

Williston from St George town line to the “West Y” 42 feet [0.005 miles]

Google Maps shows a funny West Y – town line jog, which would make the West Y 100% Williston.

