

CERTIFICATE OF HIGHWAY MILEAGE

YEAR ENDING FEBRUARY 10, 2007

Fill out form, make and file copy with the Town Clerk, and mail ORIGINAL, before February 20, 2007, Vermont Agency of Transportation, Policy and Planning Division, Drawer 33, Montpelier, VT 05633.

Vermont

Agency of Transportation

Policy and Planning Division

We, the Selectmen or Aldermen or Trustees of RYEGATE

in CALEDONIA

MAR 29 2007  
County

on an oath state that the mileage of highways, according to Title 19, V.S.A, Sec #305, added 1985, is as follows:

PART I - CHANGES TOTALS - Please fill in and calculate totals.

Town Highways	Previous Mileage	Added Mileage	Subtracted Mileage	Total	Scenic Highways
Class 1	0.000				0.000
Class 1 Lane	0.000				
Class 2	13.960		0.36		0.000
Class 3	43.450	0.15	TH 70 -.15 TH 71 -.13	43.24 43.17	0.000
State Highway	17.325				0.000
Class 4	6.950				0.000
Legal Trail	0.000				
<b>Total</b>	74.735			<del>74.455</del> 74.525	0.000

\* Mileage for Class 1 Lane, Class 4, and Legal Trail classifications is NOT included in total.

23 Aug 2007

s. Moulton

PART II - INFORMATION AND DESCRIPTION OF CHANGES SHOWN ABOVE.

1. NEW HIGHWAYS: Please attach Selectmen's "Certificate of Completion and Opening"

2. DISCONTINUED: Please attach SIGNED copy of proceedings (minutes of meeting)

3. RECLASSIFIED/REMEASURED: Please attach SIGNED copy of proceedings (minutes of meeting)

Documentation for TH 70 and TH 71 was submitted to the agency in 2006. See attached letter from Sara Moulton.

4. SCENIC HIGHWAYS: Please attach a copy of order designating/discontinuing Scenic Highways

Re: Trails: The board is still confused by the discrepancy between the VTrans maps and the map enclosed.

IF THERE ARE NO CHANGES IN MILEAGE: Check box and sign below. [ ]

PART III - SIGNATURES - PLEASE SIGN.

Selectmen/ Aldermen/ Trustees Signatures:

*Albert Spinkburne*  
*Paul Keenan*  
*Chris Smith*

T/C/V Clerk Signature:

*Maisha H Nelson*

Date Filed:

3/28/07

Please sign ORIGINAL and return it for Transportation signature.

AGENCY OF TRANSPORTATION APPROVAL:

Signed copy will be returned to T/C/V Clerk.

APPROVED:

*[Signature]*  
Representative, Agency of Transportation  
Jonathan Croft

DATE:

5/3/2007

Sara,  
I have reviewed the documentation  
and agree with your interpretation.  
Johnathan Croft - 8/28/2007

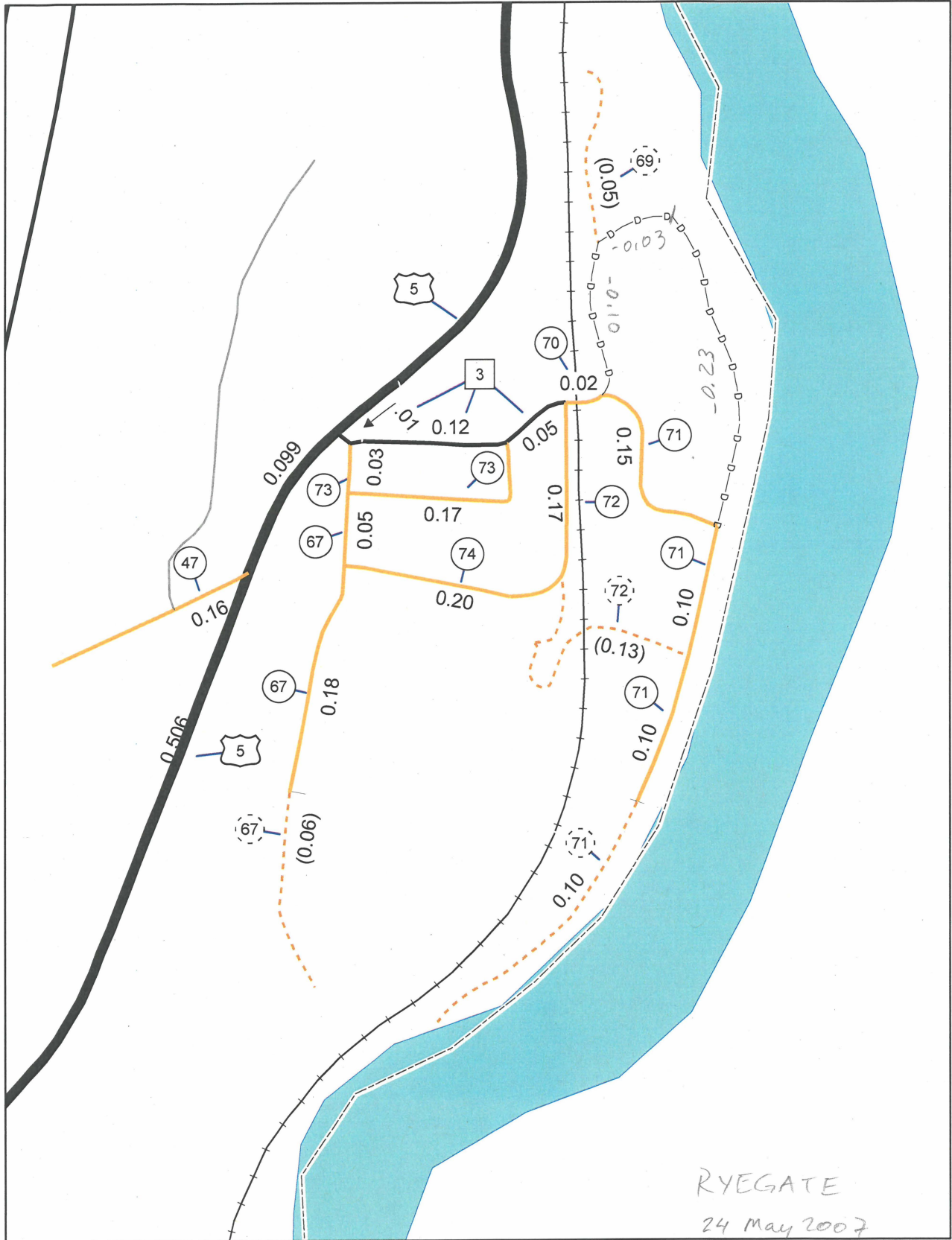
To: File  
From: Sara Moulton  
Date: 24 May 2007  
Subject: Ryegate Error Corrections - Certificate of Highway Mileage

The following is a table summarizing the changes submitted with the 2007 Certificate.  
The items in ***bold/italics*** are error corrections.

	<b>Previous Mileage</b>	<b>Class 3 Addition</b>	<b>Class 3 Subtraction</b>	<b>Total</b>
TH-70	0.15		- 0.13	0.02
TH-71	0.43	+ 0.15	- 0.23	0.35

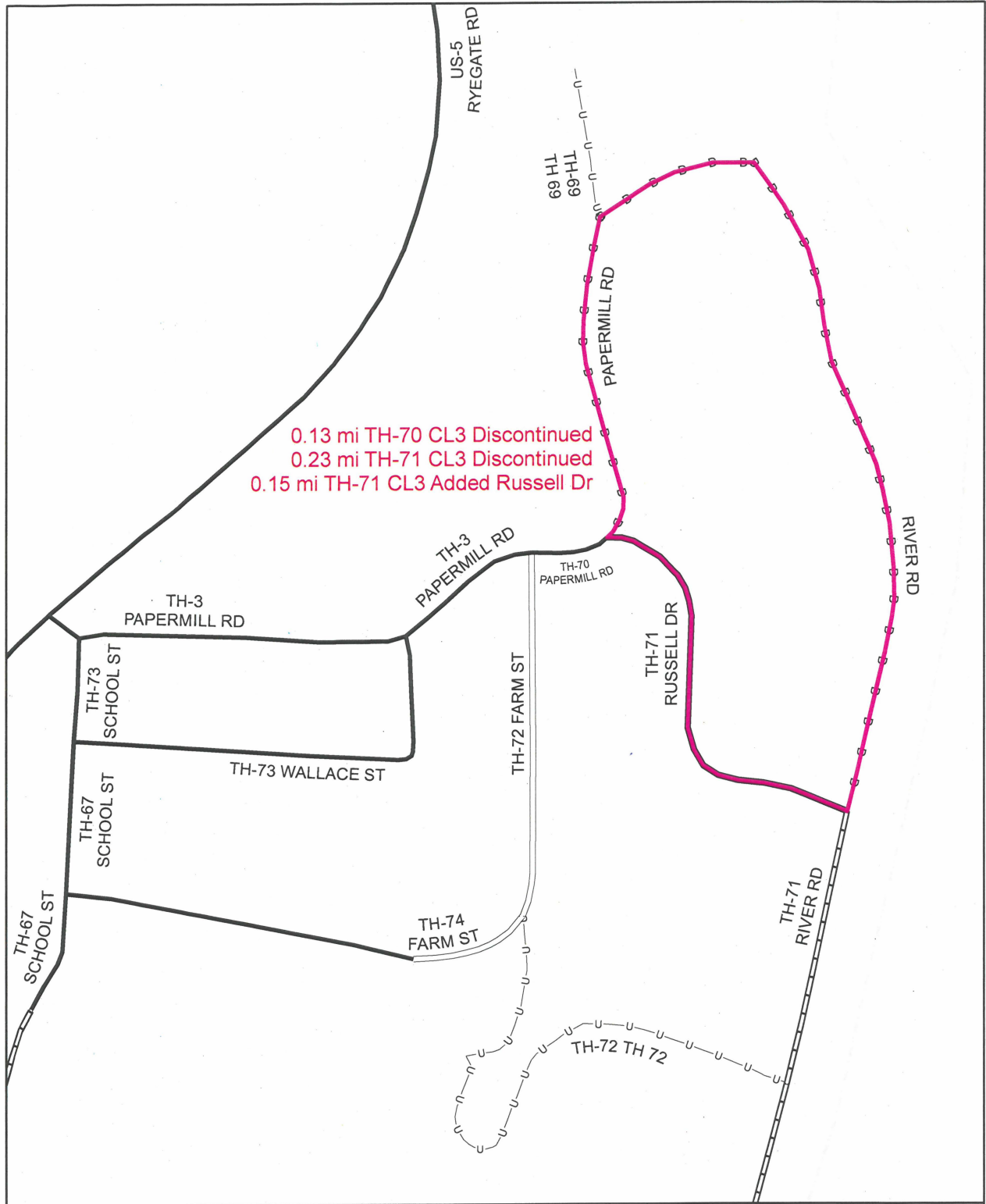
The following table summarizes the changes into modified Certificate format with the newly  
calculated totals for Class 3.

<b>Town Highways</b>	<b>Previous Mileage</b>	<b>Added Mileage</b>	<b>Subtracted Mileage</b>	<b>Total</b>
<b>Class 3</b>	43.45	0.15	0.36	43.24



RYEGATE

24 May 2007



**Mileage Certificate Change 2007 -- RYEGATE**



Mapping Unit  
 Policy & Planning Division  
 Vermont Agency of Transportation -- May 2007



**MILEAGE SUMMARY**

## CLASS 2

TH-1	4.910
TH-2	0.350
TH-3	0.180
TH-4	2.320
TH-5	1.730
TH-6	4.470

TOTAL CLASS 2 13.960 ✓

## CLASS 3

TOTAL CLASS 3	43.240
<b>TOTAL TOWN</b>	<b>57.200</b>

## US HIGHWAY

US-5	7.386
US-302	3.698

TOTAL US HIGHWAY 11.084 ✓

**TOTAL STATE 11.084**

## INTERSTATE

I-91	6.241
------	-------

TOTAL INTERSTATE 6.241 ✓

**TOTAL INTERSTATE 6.241****TOTAL, TRAVELED HIGHWAYS, FEB. 10, 2007: 74.525**

(Excludes Class 4 and Legal Trail Mileage)

RYEGATE, Caledonia County

TOWN HWY. NO.	LENGTH IN MILES				
	CLASS 3	CLASS 4			
6	4.640		65	0.600	
7	5.070		66	0.550	
8	1.860		J * - 67	0.230	(0.060)
9	0.280		68		(1.570)
10	0.220		69		(0.050)
11	0.400		✓ 70	0.020	
12	0.180		* - 71	0.350	(0.200)
13		(0.970)	72	0.170	(0.130)
15	0.040		73	0.200	
16	0.750		74	0.200	
17	0.710	(0.080)	78	0.100	
18	3.600		80		(0.110)
20	0.160		81	0.400	
21	0.730		82	0.080	
22	0.070		87	0.140	
25	0.800		88	0.290	(0.610)
26	0.210		89	0.270	
28	1.460	(0.680)	90	0.400	
29		(0.420)	91	0.120	
31	0.800		92	1.010	
32	0.770		93	0.200	
34	0.230		300	0.100	
37	0.940	(0.510)	302	0.360	
38	0.070		304	0.160	
39	0.350		306	0.060	
40	0.350		308	0.610	
41	0.300		310	0.170	
42	0.340		312	0.040	
43	0.300		314	0.230	
44	1.940		316		(0.190)
45	0.730		318	0.300	
46	0.380		320	0.050	
47	0.160		322	0.070	
48	0.800	(0.250)	324	0.060	
49		(0.210)			
51	0.630				
52	0.160				
53	0.840				
54	0.320				
55		(0.520)			
56	0.300				
58	0.330				
60	0.310	(0.390)			
61	2.350				
63	0.820				

TOWN HWY. NO.	LENGTH IN MILES	
	CLASS 3	CLASS 4
TOTAL	43.240	6.950

CERTIFICATE OF HIGHWAY MILEAGE

YEAR ENDING FEBRUARY 10, 2007

Fill out form, make and file copy with the Town Clerk, and mail ORIGINAL, before February 20, 2007, to Vermont Agency of Transportation, Policy and Planning Division, Drawer 33, Montpelier, VT 05633.

Vermont Agency of Transportation MAR 29 2007

We, the Selectmen or Aldermen or Trustees of RYEGATE in CALEDONIA County

on an oath state that the mileage of highways, according to Title 19, V.S.A, Sec #305, added 1985, is as follows:

PART I - CHANGES TOTALS - Please fill in and calculate totals.

Table with 6 columns: Town Highways, Previous Mileage, Added Mileage, Subtracted Mileage, Total, Scenic Highways. Rows include Class 1, Class 1 Lane, Class 2, Class 3, State Highway, Class 4, Legal Trail, and Total.

\* Mileage for Class 1 Lane, Class 4, and Legal Trail classifications is NOT included in total.

PART II - INFORMATION AND DESCRIPTION OF CHANGES SHOWN ABOVE.

1. NEW HIGHWAYS: Please attach Selectmen's "Certificate of Completion and Opening"

2. DISCONTINUED: Please attach SIGNED copy of proceedings (minutes of meeting)

3. RECLASSIFIED/REMEASURED: Please attach SIGNED copy of proceedings (minutes of meeting)

Documentation for TH 70 and TH 71 was submitted to the agency in 2006. See attached letter from Sara Moulton.

4. SCENIC HIGHWAYS: Please attach a copy of order designating/discontinuing Scenic Highways

Re: Trails: The board is still confused by the discrepancy between the VTrans maps and the map enclosed.

IF THERE ARE NO CHANGES IN MILEAGE: Check box and sign below. [ ]

PART III - SIGNATURES - PLEASE SIGN.

Selectmen/ Aldermen/ Trustees Signatures:

Handwritten signatures of Albert Spinkburne, Paul Korman, and Robert Smith.

T/C/V Clerk Signature:

Handwritten signature of Maisha H Nelson

Date Filed:

Handwritten date 3/28/07

Please sign ORIGINAL and return it for Transportation signature.

AGENCY OF TRANSPORTATION APPROVAL:

Signed copy will be returned to T/C/V Clerk.

APPROVED:

Handwritten signature of Jonathan Croft, Representative, Agency of Transportation

DATE:

Handwritten date 5/3/2007





State of Vermont  
Policy & Planning Division-Mapping Unit  
1 National Life Drive, Drawer 33  
Montpelier, VT 05633-5001  
<http://www.aot.state.vt.us>

*Agency of Transportation*

Telephone: 802-828-2109  
Fax: 802-828-2334  
Email: [sara.moulton@state.vt.us](mailto:sara.moulton@state.vt.us)

February 23, 2007

Chairperson, Board of Selectmen  
Ryegate, c/o Town Clerk  
PO Box 332  
Ryegate, VT 05042

Dear Town Clerk and Selectboard:

Since the mileage changes requested on the 2006 Certificate of Highway Mileage were not accepted by the Agency of Transportation in 2006, the Town of Ryegate should enter the appropriate mileage under the "Added Mileage" and "Subtracted Mileage" columns for the changes covering TH-70, and TH-71 on the 2007 Certificate, with a note under the Reclassified/Remeasured section that the documentation for this area was submitted to the Agency in 2006. The documentation for TH-70 and TH-71 is sufficient and the Agency will accept the documentation for these changes.

In a letter from the Town dated April 12, 2006, it was stated that "TH-69 was discontinued when the paper mill expanded." The documentation submitted last year did not include documentation that the Town followed the process of discontinuance described in 19 V.S.A. Chapter 7.

Also, as I mentioned in an email dated February 14, 2007, the documentation submitted did not include documentation covering the discontinuance process for TH-17.

VTrans will accept the changes for TH-17 and TH-69 when sufficient documentation is provided that demonstrates the Town followed the discontinuance process as defined in 19 V.S.A. Chapter 7.

If you have any questions, please call me at 802-828-2109 or send e-mail to [sara.moulton@state.vt.us](mailto:sara.moulton@state.vt.us)

Thank you.

Sincerely,

Sara Moulton  
Mapping & GIS Specialist





State of Vermont  
Policy & Planning Division-Mapping Unit  
1 National Life Drive, Drawer 33  
Montpelier, VT 05633-5001  
<http://www.aot.state.vt.us>

*Agency of Transportation*

Telephone: 802-828-2600  
Fax: 802-828-2334

March 15, 2007

Chairperson, Board of Selectmen  
Ryegate, c/o Town Clerk  
PO Box 332  
Ryegate, VT 05042

TO: TOWN CLERK and SELECTBOARD

In early January, the Vermont Agency of Transportation mailed the annual Certificate of Highway Mileage to you for completion and return. To date, your town's certificate has not been received. We use this certificate to confirm highway mileage for the purpose of allocating state aid for town roads. If we do not receive a completed mileage certificate from you by March 30, we will assume there are no changes from last year's certificate and state aid will be based on those mileages.

The completed mileage certificate should be returned to:  
Vermont Agency of Transportation  
Policy & Planning Division - Mapping Unit  
1 National Life Drive, Drawer 33  
Montpelier, VT 05633-5001

Please feel free to contact me with any questions or comments regarding the Mileage Certificates or the process. I can be reached via telephone at (802) 828-2600 or via email at [johnathan.croft@state.vt.us](mailto:johnathan.croft@state.vt.us).

Sincerely,

A handwritten signature in black ink, appearing to read "Johnathan Croft".

Johnathan Croft  
AOT GIS Database Administrator

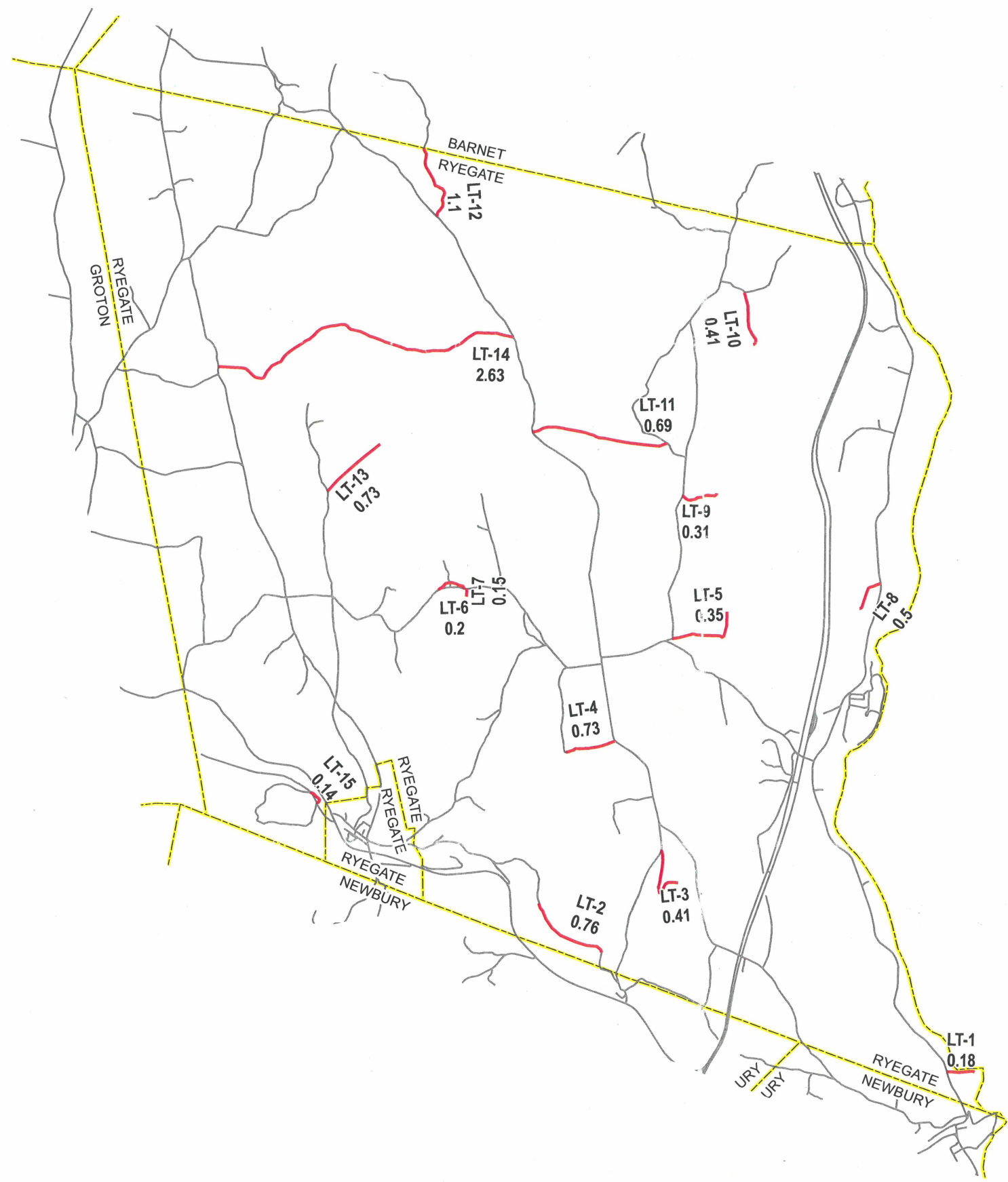
JFC/sem

cc: Mileage Certificate File



LEGAL TRAIL NUMBER	LENGTH IN MILES
--------------------	-----------------

LT-1	0.18
LT-10	0.41
LT-11	0.69
LT-12	1.1
LT-13	0.73
LT-14	2.63
LT-15	0.14
LT-2	0.76
LT-3	0.41
LT-4	0.73
LT-5	0.35
LT-6	0.2
LT-7	0.15
LT-8	0.5
LT-9	0.31



**HIGHWAYS**

— PUBLIC HIGHWAYS

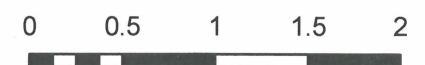
— LEGAL TRAILS

**LEGAL TRAIL VERIFICATION  
TOWN OF RYEGATE**

CALEDONIA COUNTY

Map generated: November, 2006

SCALE: 1:63256



Miles



**Moulton, Sara**

---

**From:** Moulton, Sara  
**Sent:** Thursday, March 01, 2007 3:21 PM  
**To:** 'Marsha Nelson'  
**Subject:** RE: Ryegate - RE: 2007 Certificate of Highway Mileage

I can see why you might be confused about LT-3. The alignment that shows up on the Legal Trail Verification map is not the same as what has been drawn on the more recent VTrans maps. The AOTMILES mileage was recorded as 0.41 when that segment of highway was reclassified from Class 4 to Legal Trail when the legislature removed trails from Class 4 town highways (Act 269).

I've attached a scanned copy of a portion of the town highway map dated 1983 when TH-62 was still considered a Class 4 town highway. The dashed highway symbol indicates that it was considered a Class 4 road even though it was drawn with -LT- line. I'm not sure why its alignment has changed so much in future years.

Sara Moulton  
Mapping & GIS Specialist  
Policy & Planning Division - Mapping Unit  
Vermont Agency of Transportation (VTrans)  
Tel: 802-828-2109

-----Original Message-----

**From:** Marsha Nelson [mailto:ryegateclerk@yahoo.com]  
**Sent:** Wednesday, February 28, 2007 1:30 PM  
**To:** Moulton, Sara  
**Subject:** RE: Ryegate - RE: 2007 Certificate of Highway Mileage

Hi Sara,

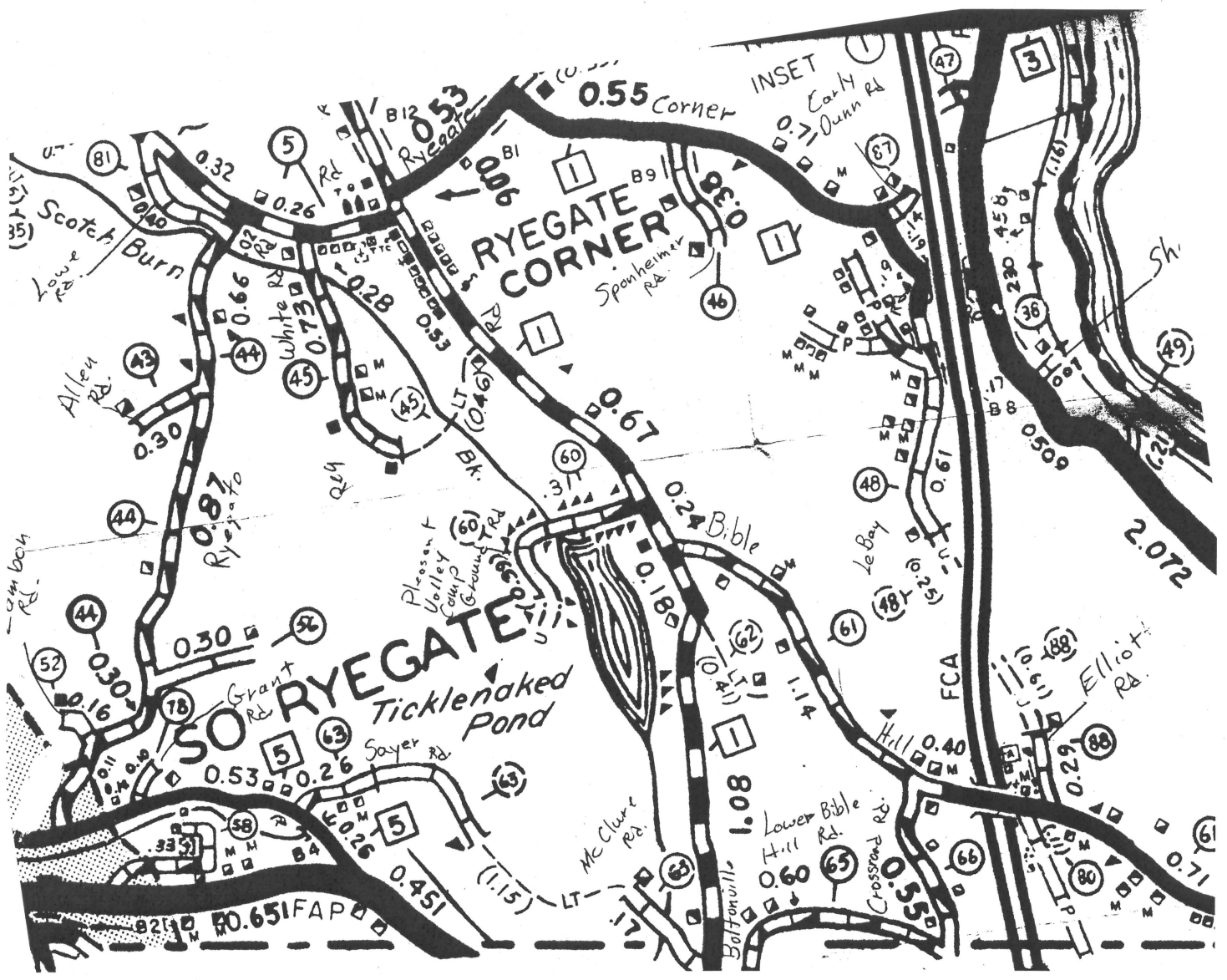
Thanks for the information you've sent. The Selectboard worked on the Certificate of Highway Mileage form at their meeting Monday night. They asked me to ask you how the trail mileage was determined. They are confused particularly about LT-3.

Please be assured we will get you the form as soon as possible. We have appreciated your input.

Sincerely,

Marsha Nelson

Ryegate Town Clerk



## Moulton, Sara

---

**From:** Marsha Nelson [ryegateclerk@yahoo.com]  
**Sent:** Wednesday, February 28, 2007 1:30 PM  
**To:** Moulton, Sara  
**Subject:** RE: Ryegate - RE: 2007 Certificate of Highway Mileage

Hi Sara,

Thanks for the information you've sent. The Selectboard worked on the Certificate of Highway Mileage form at their meeting Monday night. They asked me to ask you how the trail mileage was determined. They are confused particularly about LT-3.

Please be assured we will get you the form as soon as possible. We have appreciated your input.

Sincerely,

Marsha Nelson  
Ryegate Town Clerk

"Moulton, Sara" <Sara.Moulton@state.vt.us> wrote:

I've attached a copy of a letter in response to the Selectboard's request for more information concerning the status of changes and documentation submitted in 2006 as part of the Certificate of Highway Mileage process. I will also send a paper copy.

Sara Moulton  
Mapping & GIS Specialist  
Policy & Planning Division - Mapping Unit  
Vermont Agency of Transportation (VTrans)  
Tel: 802-828-2109

-----Original Message-----

**From:** Marsha Nelson [mailto:ryegateclerk@yahoo.com]  
**Sent:** Monday, February 19, 2007 2:31 PM  
**To:** Moulton, Sara  
**Subject:** Re: Ryegate - RE: 2007 Certificate of Highway Mileage

Sara,

Thanks for replying. For some reason, your email went into my spam folder and I just noticed it. I'll look forward to further information from you.

Marsha Nelson

---

Cheap Talk? [Check out](#) Yahoo! Messenger's low PC-to-Phone call rates.



State of Vermont  
Policy & Planning Division-Mapping Unit  
1 National Life Drive, Drawer 33  
Montpelier, VT 05633-5001  
<http://www.aot.state.vt.us>

*Agency of Transportation*

Telephone: 802-828-2109  
Fax: 802-828-2334  
Email: [sara.moulton@state.vt.us](mailto:sara.moulton@state.vt.us)

February 23, 2007

Chairperson, Board of Selectmen  
Ryegate, c/o Town Clerk  
PO Box 332  
Ryegate, VT 05042

Dear Town Clerk and Selectboard:

Since the mileage changes requested on the 2006 Certificate of Highway Mileage were not accepted by the Agency of Transportation in 2006, the Town of Ryegate should enter the appropriate mileage under the "Added Mileage" and "Subtracted Mileage" columns for the changes covering TH-70, and TH-71 on the 2007 Certificate, with a note under the Reclassified/Remeasured section that the documentation for this area was submitted to the Agency in 2006. The documentation for TH-70 and TH-71 is sufficient and the Agency will accept the documentation for these changes.

In a letter from the Town dated April 12, 2006, it was stated that "TH-69 was discontinued when the paper mill expanded." The documentation submitted last year did not include documentation that the Town followed the process of discontinuance described in 19 V.S.A. Chapter 7.

Also, as I mentioned in an email dated February 14, 2007, the documentation submitted did not include documentation covering the discontinuance process for TH-17.

VTrans will accept the changes for TH-17 and TH-69 when sufficient documentation is provided that demonstrates the Town followed the discontinuance process as defined in 19 V.S.A. Chapter 7.

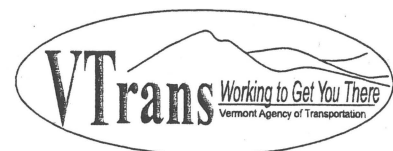
If you have any questions, please call me at 802-828-2109 or send e-mail to [sara.moulton@state.vt.us](mailto:sara.moulton@state.vt.us)

Thank you.

Sincerely,

*Sara Moulton*

Sara Moulton  
Mapping & GIS Specialist



CERTIFICATE OF HIGHWAY MILEAGE

YEAR ENDING FEBRUARY 10, 2007

Fill out form, make and file copy with the Town Clerk, and mail ORIGINAL, before February 20, 2007 to: Vermont Agency of Transportation, Policy and Planning Division, Drawer 33, Montpelier, VT 05633.

We, the Selectmen or Aldermen or Trustees of RYEGATE in CALEDONIA County

on an oath state that the mileage of highways, according to Title 19, V.S.A, Sec #305, added 1985, is as follows:

PART I - CHANGES TOTALS - Please fill in and calculate totals.

Table with 6 columns: Town Highways, Previous Mileage, Added Mileage, Subtracted Mileage, Total, Scenic Highways. Rows include Class 1, Class 1 Lane, Class 2, Class 3, State Highway, Class 4, Legal Trail, and Total.

\* Mileage for Class 1 Lane, Class 4, and Legal Trail classifications is NOT included in total.

PART II - INFORMATION AND DESCRIPTION OF CHANGES SHOWN ABOVE.

- 1. NEW HIGHWAYS: Please attach Selectmen's "Certificate of Completion and Opening"
2. DISCONTINUED: Please attach SIGNED copy of proceedings (minutes of meeting)
3. RECLASSIFIED/REMEASURED: Please attach SIGNED copy of proceedings (minutes of meeting)
4. SCENIC HIGHWAYS: Please attach a copy of order designating/discontinuing Scenic Highways

IF THERE ARE NO CHANGES IN MILEAGE: Check box and sign below. [ ]

PART III - SIGNATURES - PLEASE SIGN.

Selectmen/ Aldermen/ Trustees Signatures: \_\_\_\_\_

T/C/V Clerk Signature: \_\_\_\_\_ Date Filed: \_\_\_\_\_

Please sign ORIGINAL and return it for Transportation signature.

AGENCY OF TRANSPORTATION APPROVAL: Signed copy will be returned to T/C/V Clerk.

APPROVED: \_\_\_\_\_ DATE: \_\_\_\_\_
Representative, Agency of Transportation



State of Vermont  
Policy & Planning Division-Mapping Unit  
1 National Life Drive, Drawer 33  
Montpelier, VT 05633-5001  
<http://www.aot.state.vt.us>

*Agency of Transportation*

Telephone: 802-828-2109  
Fax: 802-828-2334  
Email: [sara.moulton@state.vt.us](mailto:sara.moulton@state.vt.us)

February 23, 2007

Chairperson, Board of Selectmen  
Ryegate, c/o Town Clerk  
PO Box 332  
Ryegate, VT 05042

Dear Town Clerk and Selectboard:

Since the mileage changes requested on the 2006 Certificate of Highway Mileage were not accepted by the Agency of Transportation in 2006, the Town of Ryegate should enter the appropriate mileage under the "Added Mileage" and "Subtracted Mileage" columns for the changes covering TH-70, and TH-71 on the 2007 Certificate, with a note under the Reclassified/Remeasured section that the documentation for this area was submitted to the Agency in 2006. The documentation for TH-70 and TH-71 is sufficient and the Agency will accept the documentation for these changes.

In a letter from the Town dated April 12, 2006, it was stated that "TH-69 was discontinued when the paper mill expanded." The documentation submitted last year did not include documentation that the Town followed the process of discontinuance described in 19 V.S.A. Chapter 7.

Also, as I mentioned in an email dated February 14, 2007, the documentation submitted did not include documentation covering the discontinuance process for TH-17.

VTrans will accept the changes for TH-17 and TH-69 when sufficient documentation is provided that demonstrates the Town followed the discontinuance process as defined in 19 V.S.A. Chapter 7.

If you have any questions, please call me at 802-828-2109 or send e-mail to [sara.moulton@state.vt.us](mailto:sara.moulton@state.vt.us)

Thank you.

Sincerely,



Sara Moulton  
Mapping & GIS Specialist

## Moulton, Sara

---

**From:** Moulton, Sara  
**Sent:** Wednesday, February 14, 2007 9:28 AM  
**To:** 'Marsha Nelson'; 'clayfield@kingcon.com'  
**Cc:** Croft, Johnathan  
**Subject:** Ryegate - RE: 2007 Certificate of Highway Mileage

I received the letter you emailed on behalf of the Ryegate Selectboard following up on the 2006 Certificate of Highway Mileage in preparation of the 2007 Certificate.

### TH-69 – TH-72

The documentation that was sent to us in 2006 covers the TH-69 – TH-72 area. I need to confirm with my supervisor that the documentation for that area is complete, however, I won't be able to do that today because he is out today because of the storm.

### TH-17

The Selectmen's Minutes dated Feb. 13, 2006 included the following statement:

"It was decided after advisement to take off .08 miles on TH # 17 as included on the map."

I assume the Selectboard's intent was to discontinue that portion of highway, but we didn't receive documentation that the discontinuance was done according to the process described in Vermont Statutes Title 19 Chapter 7.

I've attached the document "2007 Guidelines – Certificate of Highway Mileage" which summarizes the discontinuance process under the following sections:

- Supporting documentation
- Notice and hearing of reclassification or discontinuance
- Additional notice of discontinuance

I will follow up on the TH-69 – TH-72 area with my supervisor as soon as possible.

Sara Moulton  
Mapping & GIS Specialist  
Policy & Planning Division - Mapping Unit  
Vermont Agency of Transportation (VTrans)  
Tel: 802-828-2109

-----Original Message-----

**From:** Marsha Nelson [mailto:ryegateclerk@yahoo.com]  
**Sent:** Tuesday, February 13, 2007 4:32 PM  
**To:** Moulton, Sara  
**Subject:** 2007 Certificate of Highway Mileage

Sara:

I am emailing you a letter the Selectboard asked me to write to you last evening at their meeting. I will also send you a paper copy.

Thank you,  
Marsha Nelson  
Ryegate Town Clerk

Don't get soaked. Take a quick peak at the forecast  
with the Yahoo! Search weather shortcut.

TOWN OF RYEGATE  
PO BOX 332  
RYEGATE, VERMONT 05042

February 13, 2007

Sara Moulton  
Mapping & GIS Specialist  
Policy & Planning Division  
1 National Life Drive, Drawer 33  
Montpelier, VT 05633-5001

Dear Sara:

Last night at their board meeting, the Selectmen reviewed the packet recently sent concerning the 2007 Certificate of Highway Mileage.

As you may know, last year the board received a letter dated May 3, 2006 from your office, stating that the Agency was unable to approve the 2006 Mileage Certificate as submitted by the Town. Subsequently the town prepared a packet and sent notices of hearings and minutes of hearings and a map to correct the situation on Town Highway #70.

The board has not heard anything since, and feels reluctant to submit the 2007 Certificate of Highway Mileage until we hear from your department. If you have questions, you can email Andrew Smith who is on the Select board at [clayfield@kingcon.com](mailto:clayfield@kingcon.com). You can also call the office Monday – Wednesday from 1-5 pm or Fridays 9-1 at 802-584-3880

Thank you.

Sincerely,



Marsha Nelson

Clerk for the Select board

cc. Board of Selectmen