

District 1
Certcode 0206-1

**CERTIFICATE OF HIGHWAY MILEAGE
YEAR ENDING FEBRUARY 10, 2018**

Fill out form, make and file copy with the Town Clerk, and mail ORIGINAL, before February 20, 2018 to:
Vermont Agency of Transportation, Division of Policy, Planning and Intermodal Development, Mapping Section
One National Life Drive, Montpelier, VT 05633.

We, the members of the legislative body of MANCHESTER VILLAGE in BENNINGTON County
on an oath state that the mileage of highways, according to Vermont Statutes Annotated, Title 19, Section 305,
added 1985, is as follows:

PART I - CHANGES TOTALS - Please fill in and calculate totals.

Town Highways	Previous Mileage	Added Mileage	Subtracted Mileage	Total	Scenic Highways
Class 1	2.007			2.007	0.000
Class 2	3.390			3.390	0.000
Class 3	3.69	0.02		3.71	0.000
State Highway	0.000			0	0.000
Total	9.087			9.107	0.000
* Class 1 Lane	0.000			"	
* Class 4	0.00			"	0.000
* Legal Trail	0.00			"	

* Mileage for Class 1 Lane, Class 4, and Legal Trail classifications are NOT included in total.

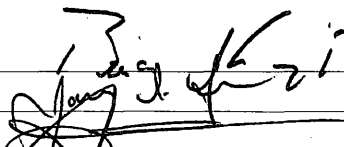
PART II - INFORMATION AND DESCRIPTION OF CHANGES SHOWN ABOVE.

- NEW HIGHWAYS:** Please attach Selectmen's "Certificate of Completion and Opening".
- DISCONTINUED:** Please attach SIGNED copy of proceedings (minutes of meeting).
- RECLASSIFIED/REMEASURED:** Please attach SIGNED copy of proceedings (minutes of meeting).
 CL3 TH-110 (Ways Ln) mileage adjustment +0.02mi (remeasured); total from 0.48 to 0.50
- SCENIC HIGHWAYS:** Please attach a copy of order designating/discontinuing Scenic Highways.

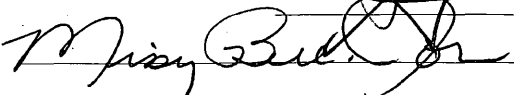
IF THERE ARE NO CHANGES IN MILEAGE: Check box and sign below. []

PART III - SIGNATURES - PLEASE SIGN.

Selectmen/ Aldermen/ Trustees Signatures:



T/C/V Clerk Signature:



Date Filed:

2-5-18

Please sign ORIGINAL and return it for Transportation signature.

AGENCY OF TRANSPORTATION APPROVAL:

Signed copy will be returned to T/C/V Clerk.

APPROVED:

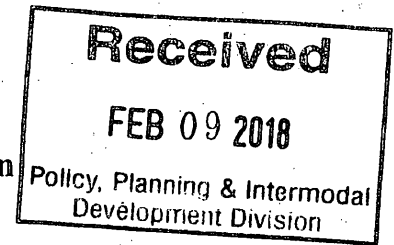

Representative, Agency of Transportation

DATE:

4/18/2018

Vermont Statutes Annotated

19 V.S.A. § 305. Measurement and inspection



§ 305. Measurement and inspection

(a) After reasonable notice to the selectboard, a representative of the agency may measure and inspect the class 1, 2, and 3 town highways in each town to verify the accuracy of the records on file with the agency. Upon request, the selectboard or their designee shall be permitted to accompany the representative of the agency during the measurement and inspection. The agency shall notify the town when any highway, or portion of a highway, does not meet the standards for its assigned class. If the town fails, within one year, to restore the highway or portion of the highway to the accepted standard, or to reclassify, or to discontinue, or develop an acceptable schedule for restoring to the accepted standards, the agency for purposes of apportionment under section 306 of this title shall deduct the affected mileage from that assigned to the town for the particular class of the road in question.

(b) Annually, on or before February 10, the selectboard shall file with the town clerk a sworn statement of the description and measurements of all class 1, 2, 3, and 4 town highways and trails then in existence, including any special designation such as a throughway or scenic highway. When class 1, 2, 3, or 4 town highways, trails, or unidentified corridors are accepted, discontinued, or reclassified, a copy of the proceedings shall be filed in the town clerk's office and a copy shall be forwarded to the agency.

(c) All class 1, 2, 3, and 4 town highways and trails shall appear on the town highway maps by July 1, 2015.

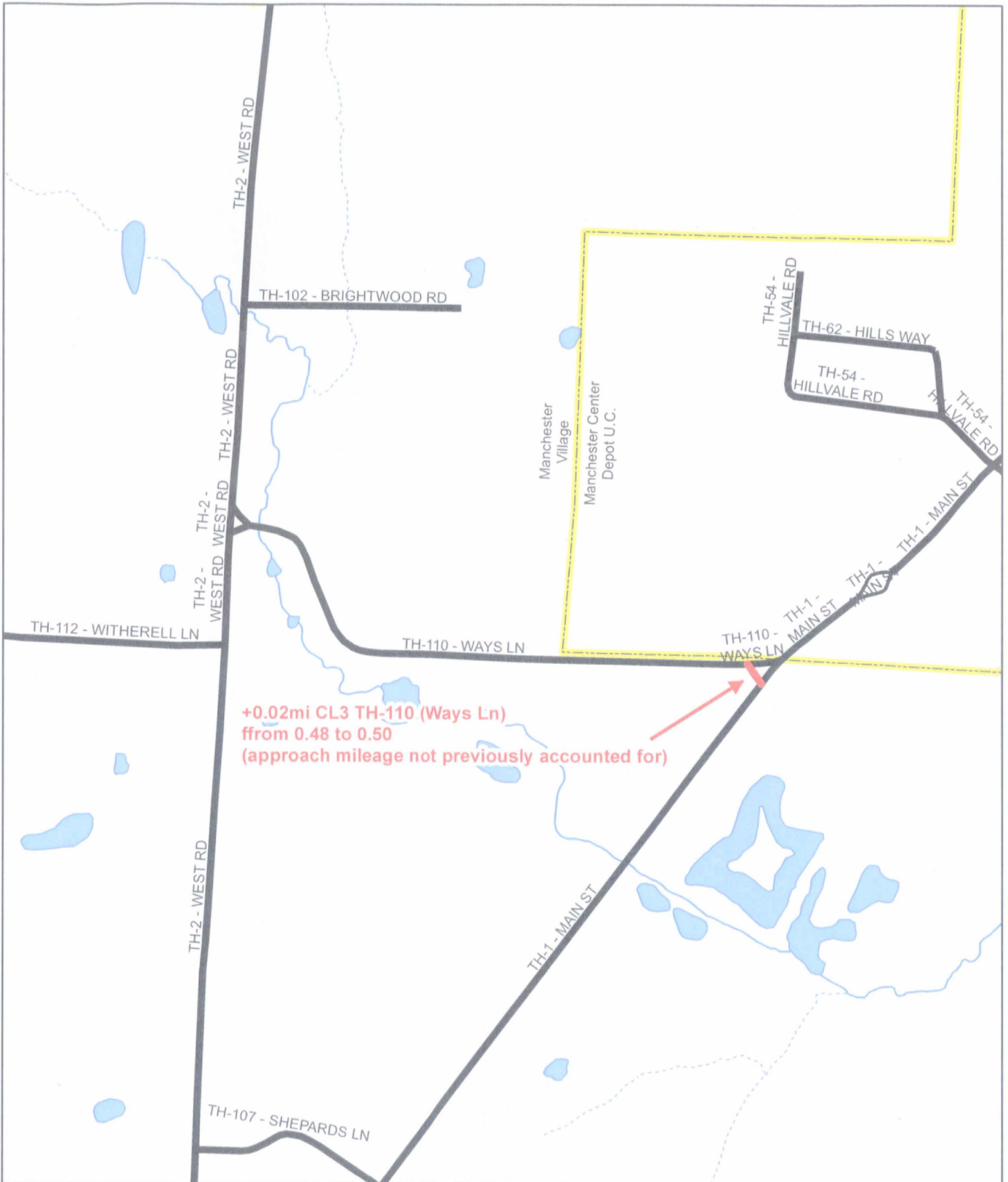
(d) At least 45 days prior to first including a town highway or trail that is not clearly observable by physical evidence of its use as a highway or trail and that is legally established prior to February 10, 2006 in the sworn statement required under subsection (b) of this section, the legislative body of the municipality shall provide written notice and an opportunity to be heard at a duly warned meeting of the legislative body to persons owning lands through which a highway or trail passes or abuts.

(e) The agency shall not accept any change in mileage until the records required to be filed in the town clerk's office by this section are received by the agency. A request by a municipality to the agency for a change in mileage shall include a description of the affected highway or trail, a copy of any surveys of the affected highway or trail, minutes of meetings at which the legislative body took action with respect to the changes, and a current town highway map with the requested deletions and additions sketched on it. A survey shall not be required for class 4 town highways that are legally established prior to February 10, 2006. All records filed with the agency are subject to verification in accordance with subsection (a) of this section.

(f) The selectboard of any town who are aggrieved by a finding of the agency concerning the measurement, description, or classification of a town highway may appeal to the transportation board by filing a notice of appeal with the executive secretary of the transportation board.

(g) The agency shall provide each town with a map of all of the highways in that town together with the mileage of each class 1, 2, 3, and 4 highway, as well as each trail, and such other information as the agency deems appropriate.

Excerpt of 19 V.S.A. § 305 - *Measurement and inspection* from Vermont Statutes Online located at – <https://legislature.vermont.gov/statutes/section/19/003/00305>



Mileage Certificate Change 2018
MANCHESTER VILLAGE
 (CTUA: 0206-1)

Mapping Section
 Division of Policy, Planning, and Intermodal Development
 Vermont Agency of Transportation - November 2017



State of Vermont
Division of Policy, Planning and Intermodal Development - Mapping Section
1 National Life Drive
Montpelier, VT 05633-5001
<http://vtrans.vermont.gov/>

Telephone: 802-828-2600
Fax: 802-828-2334
Email: johnathan.croft@vermont.gov

Agency of Transportation

November 28, 2017

Brian Knight, Village President
Village of Manchester, c/o Village Clerk
PO Box 482
Manchester, VT 05254

pre-loaded
18/12/2017

Dear Mr. Knight,

While reviewing road centrelines in the Village of Manchester earlier this year, we identified a previously unaccounted-for fork on the easternmost extent of TH110 (Ways Ln) where it intersects with VT-7A. On 26 September 2017, this intersection was visited and the fork measured for field inventory purposes. Based upon this finding, we have determined the following:


Class 3 TH-110 (Ways Ln) mileage increased by 0.02 from 0.48 to 0.50 (remeasured)

A map of the remeasured section has been included to provide context of the mileage changes.

This change will be reflected as a remeasurement and preloaded on the 2018 Certificate of Highway Mileage for the Village of Manchester. The Certificate is expected to be mailed to the town in early January and should be returned to VTrans by February 20.

Please feel free to contact me with any questions or comments regarding these changes, or mapping in general.

Sincerely,

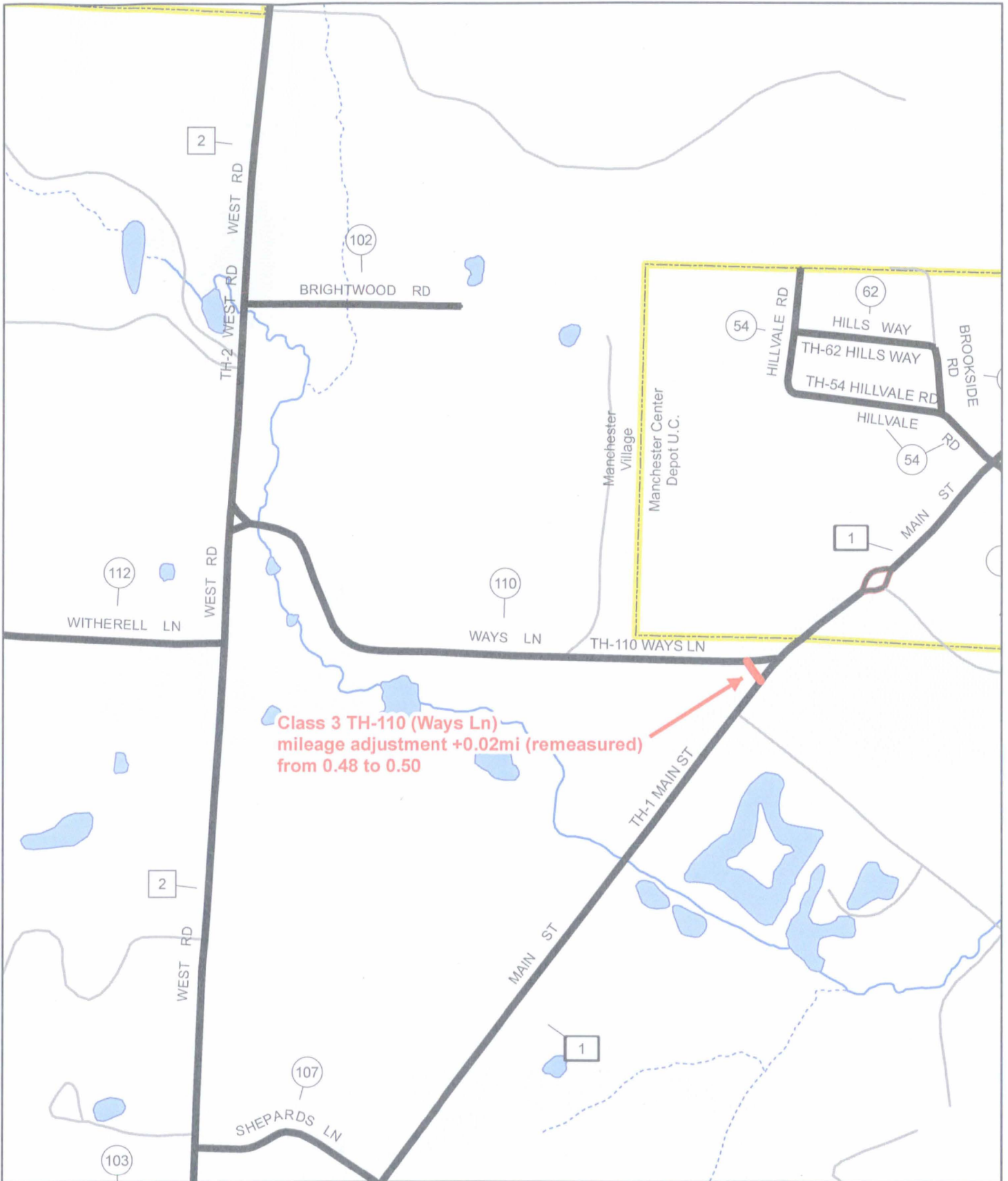


Johnathan Croft
VTrans Mapping Section Chief

JFC/kg

Enclosures

cc: Robert Faley – District Transportation Administrator – District 1
Christopher Taft – District Project Manager – District 1



Manchester 2018 Mileage Certificate Preload

Mapping Section
 Division of Policy, Planning, and Intermodal Development
 Vermont Agency of Transportation - November 2017

