

PART I - CHANGES TOTALS - Please fill in and calculate totals.

Town Highways	Previous Mileage	Added Mileage	Subtracted Mileage	Total	Scenic Highways
Class 1	0.000			0	
Class 2	4.820		-0.08	4.74	
Class 3	9.55	+0.03		9.58	
State Highway	0.821			0.821	
Total	15.191	0.03	-0.08	15.141	
* Class 1 Lane	0.000			0	
* Class 4	1.33		-0.04	<del>1.37</del> 1.29	
* Legal Trail	0.00			0	

\* Mileage for Class 1 Lane, Class 4, and Legal Trail classifications are NOT included in total.

PART II - INFORMATION AND DESCRIPTION OF CHANGES SHOWN ABOVE.

1. NEW HIGHWAYS: Please attach Selectmen's "Certificate of Completion and Opening".

2. DISCONTINUED: Please attach SIGNED copy of proceedings (minutes of meeting).

3. RECLASSIFIED/REMEASURED: Please attach SIGNED copy of proceedings (minutes of meeting).

4. SCENIC HIGHWAYS: Please attach a copy of order designating/discontinuing Scenic Highways.

-0.04 mi CL4 TH-10 (Nichols Rd) remeasured

+0.03 mi CL3 TH-10 (Nichols Rd) remeasured

-0.08 mi CL2 TH-3 (Winhall Hollow Rd) remeasured due to Londonderry/Landgrove Town Boundary update

IF THERE ARE NO CHANGES RECORDED THIS YEAR: Place an X in the box and sign below.

PART III - SIGNATURES - PLEASE SIGN.

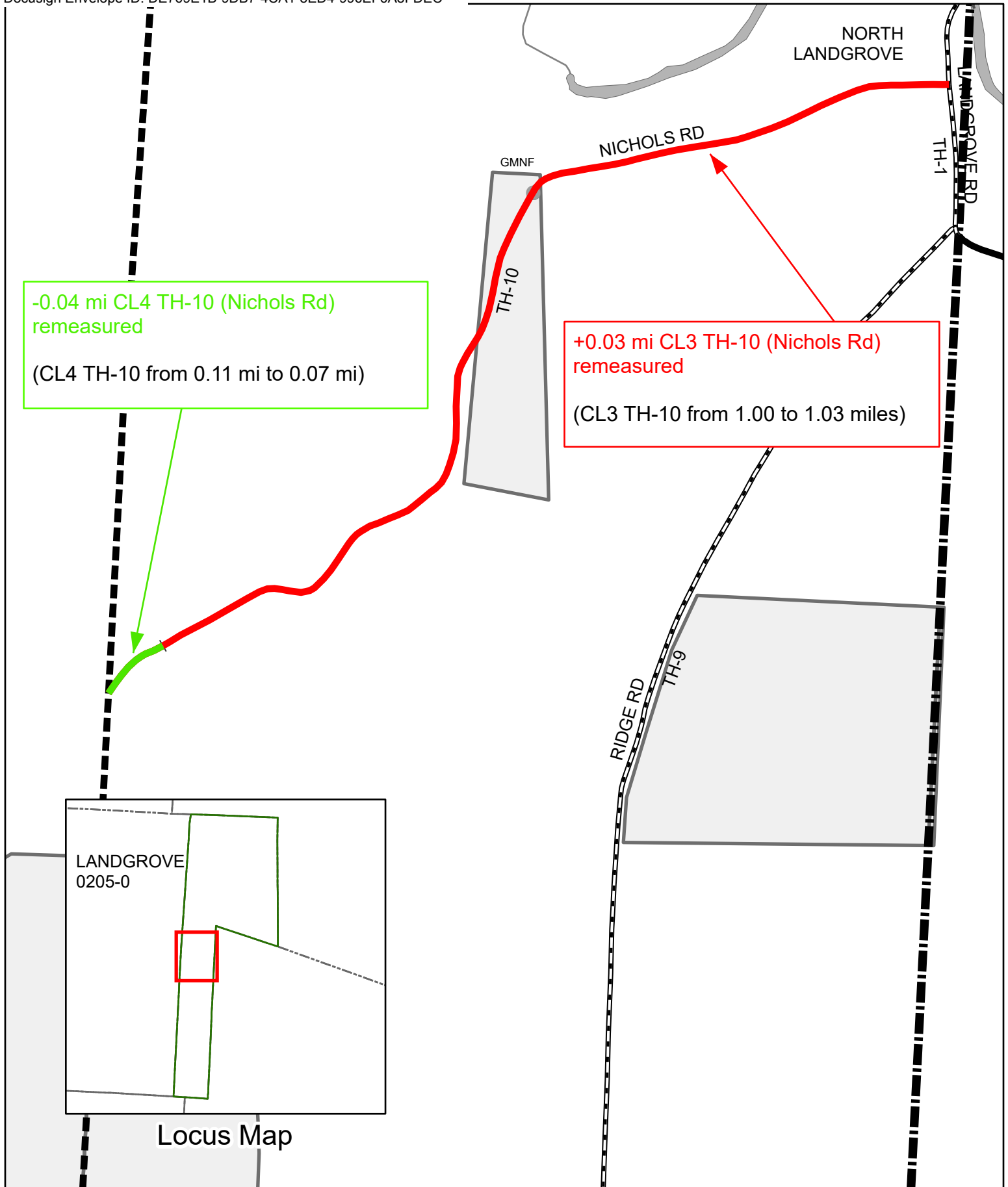
Signatures of Selectmen/ Aldermen/ Trustees:

Signature of T/C/V Clerk: Date Filed: Jan 9 2025

Please sign ORIGINAL and return it for Transportation signature.

AGENCY OF TRANSPORTATION APPROVAL: Signed copy will be returned to T/C/V Clerk.

APPROVED: DATE: 3/12/2025

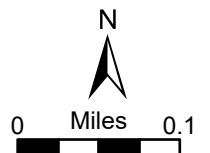


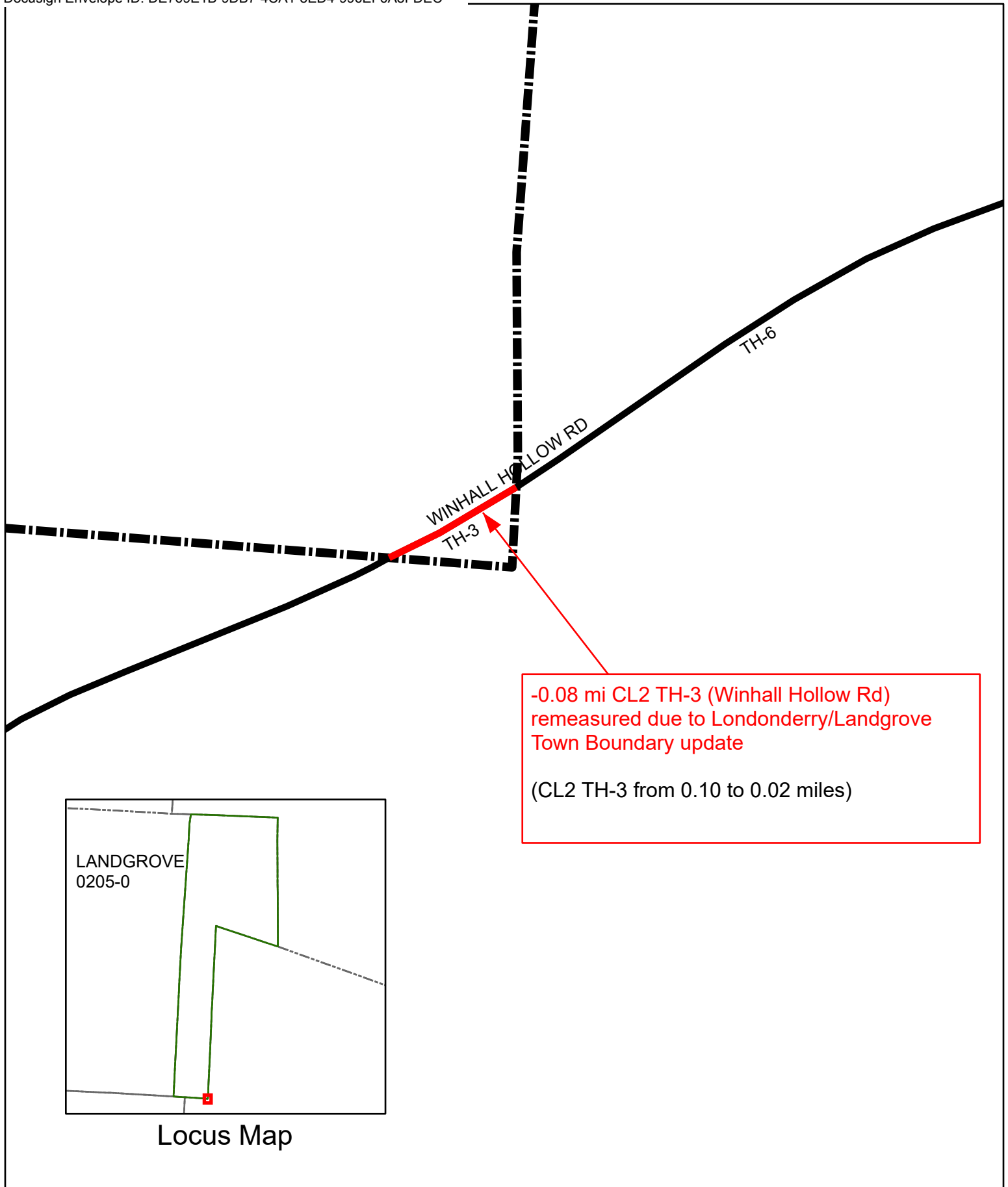
### Mileage Certificate Changes 2025

#### LANDGROVE TH-10

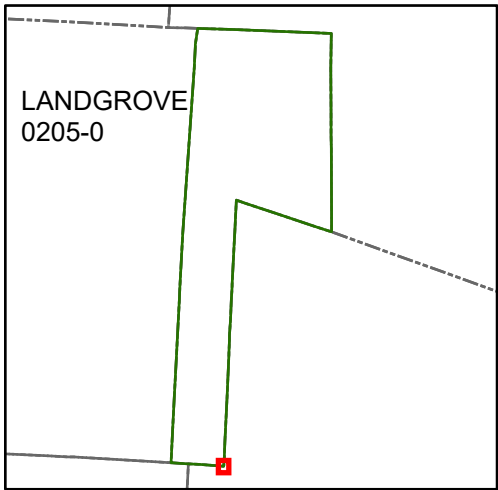
(CTUA:0205-0)  
(CERTCODE:0205-0)

Mapping Section  
Division of Policy and Planning  
Vermont Agency of Transportation -- March 12, 2025





-0.08 mi CL2 TH-3 (Winhall Hollow Rd)  
remeasured due to Londonderry/Landgrove  
Town Boundary update  
  
(CL2 TH-3 from 0.10 to 0.02 miles)



Locus Map

**Mileage Certificate Changes 2025**

**LANDGROVE TH-3**

(CTUA:0205-0)  
(CERTCODE:0205-0)

Mapping Section  
Division of Policy and Planning  
Vermont Agency of Transportation -- January 14, 2025



**From:** [AOT - Mileage Certificates](#)  
**To:** [Landgrove Town Clerk](#); [AOT - Mileage Certificates](#); [Steve Hall](#)  
**Subject:** RE: Landgrove 2025  
**Date:** Thursday, January 9, 2025 3:21:29 PM  
**Attachments:** [image001.png](#)  
[image002.png](#)

---

Thank you so much. Steve, I just noticed that the Class 4 mileage was added and not subtracted, but I can fix that before we sign it on our end.

Pam

**Pamela DeAndrea (she/her)** | AOT GIS Professional III  
Policy, Planning & Research Bureau – Mapping Section  
Policy, Planning & Intermodal Development Division  
Vermont Agency of Transportation  
219 N. Main Street | Barre, VT 05641  
[802-793-7555 phone](tel:802-793-7555) | [pam.deandrea@vermont.gov](mailto:pam.deandrea@vermont.gov)  
<http://vtrans.vermont.gov>



Help raise money for Vermonters impacted by flood damage and show your Vermont pride with *Vermont Strong* and *Tough Too* license plates and socks. [Click here to purchase your Vermont Strong gear](#) or visit [DMV.Vermont.gov/VermontStrong23](https://DMV.Vermont.gov/VermontStrong23).

Impacted Vermonters can find resources and referrals by visiting [Vermont.Gov/Flood](https://Vermont.Gov/Flood).

---

**From:** Landgrove Town Clerk <[clerk@landgrove.vermont.gov](mailto:clerk@landgrove.vermont.gov)>  
**Sent:** Thursday, January 9, 2025 3:02 PM  
**To:** AOT - Mileage Certificates <[AOT.MileageCertificates@vermont.gov](mailto:AOT.MileageCertificates@vermont.gov)>; Steve Hall <[schall70@gmail.com](mailto:schall70@gmail.com)>  
**Subject:** Re: Landgrove 2025

**EXTERNAL SENDER: Do not open attachments or click on links unless you recognize and trust the sender.**

No problem!  
Here you go!  
Chrystal

---

**From:** AOT - Mileage Certificates <[AOT.MileageCertificates@vermont.gov](mailto:AOT.MileageCertificates@vermont.gov)>  
**Sent:** Thursday, January 9, 2025 1:37 PM  
**To:** Steve Hall <[schall70@gmail.com](mailto:schall70@gmail.com)>; Landgrove Town Clerk <[clerk@landgrove.vermont.gov](mailto:clerk@landgrove.vermont.gov)>; AOT - Mileage Certificates <[AOT.MileageCertificates@vermont.gov](mailto:AOT.MileageCertificates@vermont.gov)>  
**Subject:** RE: Landgrove 2025



That is great Steve,

But we need the Town Clerk to sign and date it as well.

Pam

**Pamela DeAndrea (she/her)** | AOT GIS Professional III  
Policy, Planning & Research Bureau – Mapping Section  
Policy, Planning & Intermodal Development Division  
Vermont Agency of Transportation  
219 N. Main Street | Barre, VT 05641  
[802-793-7555 phone](tel:802-793-7555) | [pam.deandrea@vermont.gov](mailto:pam.deandrea@vermont.gov)  
<http://vtrans.vermont.gov>



Help raise money for Vermonters impacted by flood damage and show your Vermont pride with *Vermont Strong* and *Tough Too* license plates and socks. [Click here to purchase your Vermont Strong gear](#) or visit [DMV.Vermont.gov/VermontStrong23](http://DMV.Vermont.gov/VermontStrong23).

Impacted Vermonters can find resources and referrals by visiting [Vermont.Gov/Flood](http://Vermont.Gov/Flood).

---

**From:** steve hall <[schall70@gmail.com](mailto:schall70@gmail.com)>  
**Sent:** Thursday, January 9, 2025 12:23 PM  
**To:** Chrystal cleary Hall <[clerk@landgrove.vermont.gov](mailto:clerk@landgrove.vermont.gov)>; AOT - Mileage Certificates  
<[AOT.MileageCertificates@vermont.gov](mailto:AOT.MileageCertificates@vermont.gov)>  
**Subject:** Re: Landgrove 2025

**EXTERNAL SENDER: Do not open attachments or click on links unless you recognize and trust the sender.**

Hi Pam,

Let me know if the attached mileage certificate will work.

Thanks

Steven Hall

Select Board Chair

Town of Landgrove

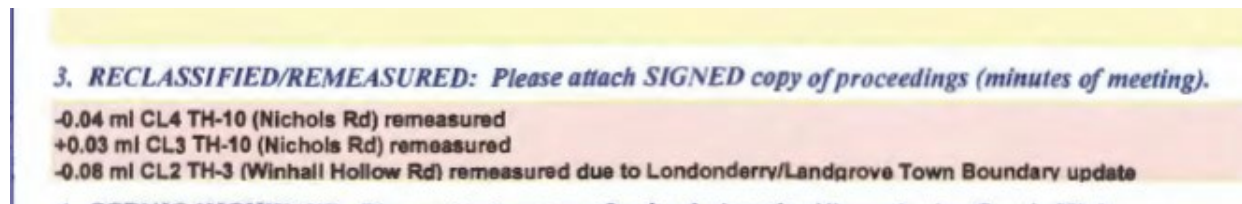
88 Landgrove Road  
Landgrove, Vt 05148  
802.824.3716

---

**From:** AOT - Mileage Certificates <[AOT.MileageCertificates@vermont.gov](mailto:AOT.MileageCertificates@vermont.gov)>  
**Sent:** Thursday, January 9, 2025 11:35 AM  
**To:** Landgrove Town Clerk <[clerk@landgrove.vermont.gov](mailto:clerk@landgrove.vermont.gov)>; AOT - Mileage Certificates <[AOT.MileageCertificates@vermont.gov](mailto:AOT.MileageCertificates@vermont.gov)>  
**Subject:** RE: Landgrove 2025

Thank you very much. We noticed that nothing was filled in on the top of the certificate for the mileage changes that we pre-loaded for you based on remeasures of roads in Landgrove.

I can fill out Part I for the Town before we sign it and send back to you, but would just like to verify that the Town is aware of the changes on the certificate as shown below:



Also, it is good when there is a mileage change especially to have more than one Selectboard member sign the mileage certificate. If you can get another Selectboard member to please sign this and I can help fill out Part I if you need assistance.

Thank you,

Pam

**Pamela DeAndrea (she/her)** | AOT GIS Professional III  
Policy, Planning & Research Bureau – Mapping Section  
Policy, Planning & Intermodal Development Division  
Vermont Agency of Transportation  
219 N. Main Street | Barre, VT 05641

802-793-7555 phone | [pam.deandrea@vermont.gov](mailto:pam.deandrea@vermont.gov)  
<http://vtrans.vermont.gov>



Help raise money for Vermonters impacted by flood damage and show your Vermont pride with *Vermont Strong* and *Tough Too* license plates and socks. [Click here to purchase your Vermont Strong gear](#) or visit [DMV.Vermont.gov/VermontStrong23](http://DMV.Vermont.gov/VermontStrong23).

Impacted Vermonters can find resources and referrals by visiting [Vermont.Gov/Flood](http://Vermont.Gov/Flood).

---

**From:** Landgrove Town Clerk <[clerk@landgrove.vermont.gov](mailto:clerk@landgrove.vermont.gov)>  
**Sent:** Thursday, January 9, 2025 10:33 AM  
**To:** AOT - Mileage Certificates <[AOT.MileageCertificates@vermont.gov](mailto:AOT.MileageCertificates@vermont.gov)>  
**Subject:** Landgrove 2025

**EXTERNAL SENDER: Do not open attachments or click on links unless you recognize and trust the sender.**

Town Clerk  
Landgrove Vermont  
-----  
[Landgrove.vermont.gov](http://Landgrove.vermont.gov)  
802-824-3716

Thursdays 9am - 1pm  
88 Landgrove Road

**From:** [DeAndrea, Pam](#)  
**To:** ["Steve Hall"](#)  
**Cc:** ["clerk@landgrove.vermont.gov"](mailto:clerk@landgrove.vermont.gov); [Hermanson, Tyler](#)  
**Subject:** TH-3 (Winhall Hollow Rd) update  
**Date:** Friday, December 13, 2024 4:21:00 PM  
**Attachments:** [image002.png](#)  
[image003.png](#)  
[image001.png](#)

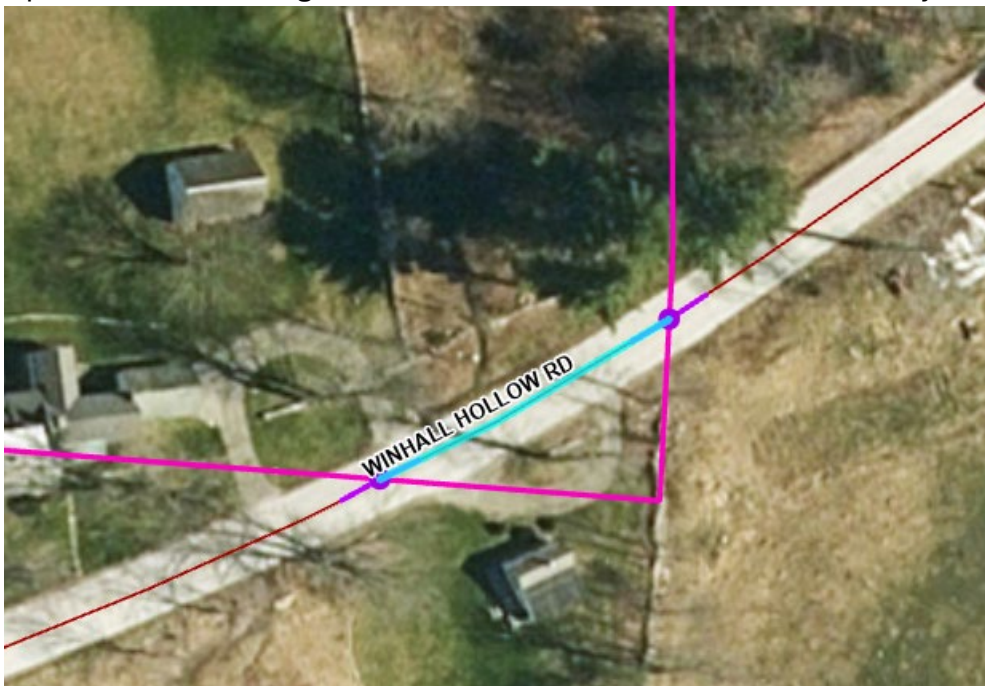
---

Good afternoon Steve,

Tyler from E911 alerted to us that we have the small piece of Class 2 Winhall Hollow Rd (TH-3) mapped incorrectly because the corner Town Boundary with Londonderry was off. We brought in a survey of the road which had the Town Boundaries on it and adjusted them (see pink lines below) to have a more accurate depiction of the segment in Landgrove shown in blue below. I checked the AOT miles on it and what is strange is that the mileage that goes way back to 1940 is 0.10 miles. Even though the old line is shorter (see 2<sup>nd</sup> image below), the new measure now only 0.02 miles. I think the 0.10 miles was an old error. Landgrove will essentially lose 0.08 Class 2 miles from this remeasurement, but it was probably not correct in the first place.

Anyway, just wanted to alert you to this change and we will preload this on the 2025 Mileage Certificate for the Town. Please feel free to contact me with any questions.

Updated CL2 TH-3 segment and Town Boundaries with Londonderry:



Old boundaries:





**Pamela DeAndrea (she/her)** | AOT GIS Professional III  
Policy, Planning & Research Bureau – Mapping Section  
Policy, Planning & Intermodal Development Division  
Vermont Agency of Transportation  
219 N. Main Street | Barre, VT 05641  
[802-793-7555 phone](tel:802-793-7555) | [pam.deandrea@vermont.gov](mailto:pam.deandrea@vermont.gov)  
<http://vtrans.vermont.gov>



Help raise money for Vermonters impacted by flood damage and show your Vermont pride with *Vermont Strong* and *Tough Too* license plates and socks. [Click here to purchase your Vermont Strong gear](#) or visit [DMV.Vermont.gov/VermontStrong23](http://DMV.Vermont.gov/VermontStrong23).

Impacted Vermonters can find resources and referrals by visiting [Vermont.Gov/Flood](http://Vermont.Gov/Flood).

**From:** [DeAndrea, Pam](#)  
**To:** [Hermanson, Tyler](#); [Landgrove Town Zoning](#)  
**Cc:** [steve.hall](#)  
**Subject:** RE: annual update  
**Date:** Monday, November 4, 2024 9:16:00 AM  
**Attachments:** [image003.png](#)  
[image004.png](#)  
[image005.png](#)  
[image001.png](#)  
[image002.png](#)

Hi Tyler and William,

I have been working with Steve Hall, surveyor, on some road issues in Landgrove, including Nicols Rd. He let me know that the Town 911 contact says its Class 3 up until just past the last house at the turn around (see blue line and red arrow in image below) and the rest is Class 4 to Peru Town line. We are planning to make this update in the 2025 cycle. There should be no change in Class 3 mileage, but there will be a change in Class 4 mileage (-0.04 miles).



For Red Pine Drive area, we worked on this with Steve in 2023. We had the discontinuance from 1986 mapped incorrectly. We updated it to have the Class 4 0.12 miles south of Red Pine Dr and then discontinued south of there (see red arrow in image below). I have cc'd Steve here to confirm.



Best,

Pam

**Pamela DeAndrea (she/her)** | AOT GIS Professional III  
 Policy, Planning & Research Bureau – Mapping Section  
 Policy, Planning & Intermodal Development Division  
 Vermont Agency of Transportation  
 219 N. Main Street | Barre, VT 05641  
 802-793-7555 phone | [pam.deandrea@vermont.gov](mailto:pam.deandrea@vermont.gov)  
<http://vtrans.vermont.gov>



Help raise money for Vermonters impacted by flood damage and show your Vermont pride with *Vermont Strong* and *Tough Too* license plates and socks. [Click here to purchase your Vermont Strong gear](#) or visit [DMV.Vermont.gov/VermontStrong23](https://dmv.vermont.gov/VermontStrong23).

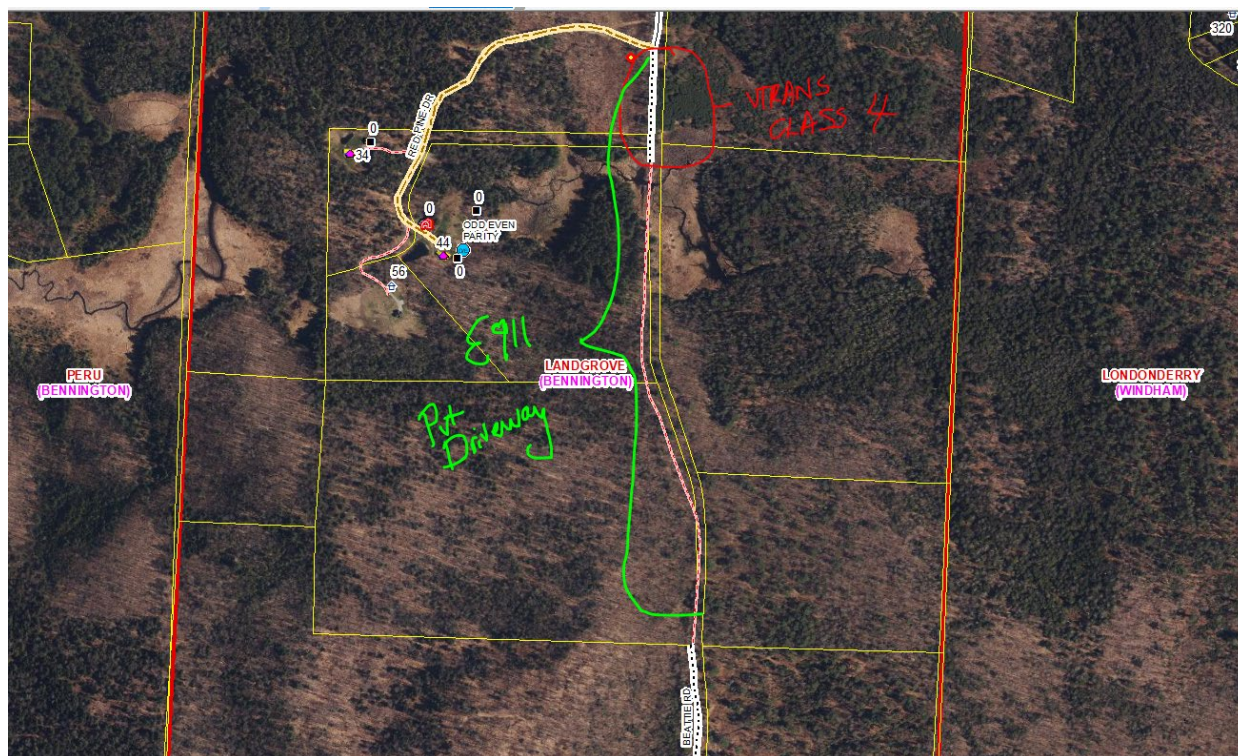
Impacted Vermonters can find resources and referrals by visiting [Vermont.Gov/Flood](https://Vermont.Gov/Flood).

**From:** Hermanson, Tyler <Tyler.Hermanson@vermont.gov>  
**Sent:** Friday, November 1, 2024 11:13 PM  
**To:** Landgrove Town Zoning <zoning@landgrove.vermont.gov>  
**Cc:** DeAndrea, Pam <Pam.DeAndrea@vermont.gov>  
**Subject:** RE: annual update

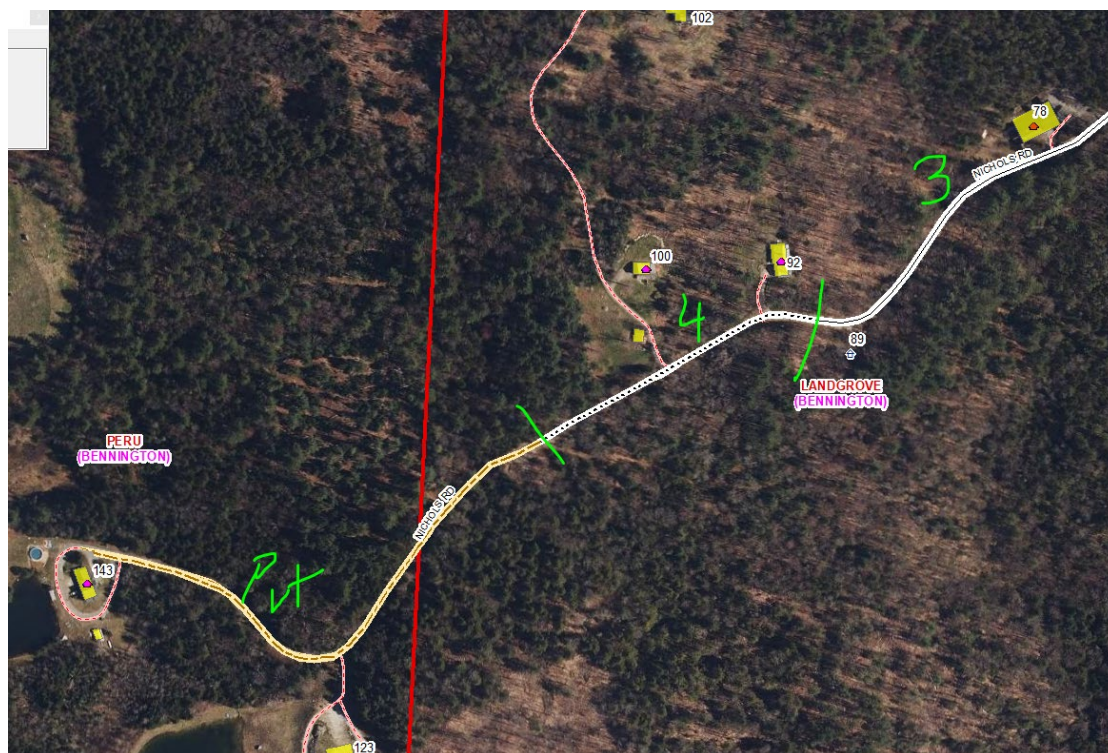
Hi Will,

Red Pine Dr area in Landgrove. VTRANS has a small segment of Class 4. Does that exist or is that since been dropped too? What you highlighted was on our map already as just a pvt driveway, which is likely will be used due to the ROW there and landlocked parcels.





As for Nichols Rd, I feel like we were discussing this with Vtrans already? What E911 has is an exact match to Vtrans. Any road class tweaks in any town, VTRANS needs to be involved, so I will be CC'ing Pam.



Tyler Hermanson GIS Specialist III  
 State of Vermont Enhanced 911 Board  
 6 Baldwin St, Fl2, Montpelier VT 05633-7960  
 E: [tyler.hermanson@vermont.gov](mailto:tyler.hermanson@vermont.gov) 802-279-4668  
 Availability: M-F | 8am-4pm

<https://e911.vermont.gov/>

**I occasionally work a flexible schedule and send emails outside normal business hours. There is no need or obligation to respond outside your hours.**

---

**From:** Landgrove Town Zoning <[zoning@landgrove.vermont.gov](mailto:zoning@landgrove.vermont.gov)>  
**Sent:** Thursday, October 31, 2024 9:41 AM  
**To:** Hermanson, Tyler <[Tyler.Hermanson@vermont.gov](mailto:Tyler.Hermanson@vermont.gov)>  
**Subject:** annual update

**EXTERNAL SENDER: Do not open attachments or click on links unless you recognize and trust the sender.**

Tyler I have a couple of spots in Landgrove where the class of the road on the 911 map don't match what's on the official town road map. Are you the right person for those, or should I send them in with the annual review?

William Goodwin  
Landgrove Zoning Administrator

Please note that this Email, along with any response or reply, may be considered a public record and thus subject to disclosure under the Vt public records law.

Any interested person may appeal this decision or act taken by the administrative officer within 15 days of the decision or act, pursuant 24 VSA 4465



**From:** [DeAndrea, Pam](#)  
**To:** [Steve Hall](#)  
**Cc:** [clerk@landgrove.vermont.gov](mailto:clerk@landgrove.vermont.gov); [Hermanson, Tyler](#)  
**Subject:** RE: Question on TH-10 (Nichols Rd)  
**Date:** Tuesday, October 1, 2024 9:42:00 AM  
**Attachments:** [image001.png](#)

---

Thank you Steve! This will result in a change in Class 4 mileage for the road for Landgrove, somewhere around -0.02 miles, but I will let you know for sure. We can put this on the list for next year's Mileage Certificate and TH map update.

Pam

**Pamela DeAndrea (she/her)** | AOT GIS Professional III  
Policy, Planning & Research Bureau – Mapping Section  
Policy, Planning & Intermodal Development Division  
Vermont Agency of Transportation  
219 N. Main Street | Barre, VT 05641  
[802-793-7555 phone](tel:802-793-7555) | [pam.deandrea@vermont.gov](mailto:pam.deandrea@vermont.gov)  
<http://vtrans.vermont.gov>



Help raise money for Vermonters impacted by flood damage and show your Vermont pride with *Vermont Strong* and *Tough Too* license plates and socks. [Click here to purchase your Vermont Strong gear](#) or visit [DMV.Vermont.gov/VermontStrong23](https://DMV.Vermont.gov/VermontStrong23).

Impacted Vermonters can find resources and referrals by visiting [Vermont.Gov/Flood](https://Vermont.Gov/Flood).

---

**From:** Steve Hall <[schall70@gmail.com](mailto:schall70@gmail.com)>  
**Sent:** Tuesday, October 1, 2024 9:11 AM  
**To:** DeAndrea, Pam <[Pam.DeAndrea@vermont.gov](mailto:Pam.DeAndrea@vermont.gov)>  
**Cc:** [clerk@landgrove.vermont.gov](mailto:clerk@landgrove.vermont.gov); Hermanson, Tyler <[Tyler.Hermanson@vermont.gov](mailto:Tyler.Hermanson@vermont.gov)>  
**Subject:** Re: Question on TH-10 (Nichols Rd)

**EXTERNAL SENDER: Do not open attachments or click on links unless you recognize and trust the sender.**

The AOT is correct. We had a few road sections a couple of years ago that needed mapping corrections and this was one of the questionable sections.

The turn around is the end of the Class3 road (1.0 miles) and then it turns to Class 4. It turns into a private road at the Landgrove/Peru border.

I'd say the 911 maps needs to be adjusted to match the AOT.

There were some adjustments to the east end of Old County Road East and Shaw Knoll (can't

remember the road numbers. maybe 6?).

Also adjusted the southern end of Landgrove Hollow Rd to where it turns into a Class 4 and then got discontinued before it turns back into a Class 4

Feel free to call me if that would simplify things.

Steven Hall

Landgrove Building & Design Co.

802-430-4090 cell

802-824-6622 office

Sent from my iPhone

On Oct 1, 2024, at 9:03 AM, DeAndrea, Pam <[Pam.DeAndrea@vermont.gov](mailto:Pam.DeAndrea@vermont.gov)> wrote:

Thank you Steve,

Sorry it is hard to see the turn around on the imagery, but I think my red arrow was at the turn around since that is about 350' from the last driveway (see yellow highlight in first image below). What I am trying to figure out is where the Class 3 ends/Class 4 begins and where the private road begins. Is the turn around where the Class 3/Class 4 break is located? Or is it where the private road starts? If it is the Class 3/Class 4 break, we have the Class 3 and Class 4 mapped incorrectly.

The class 4 section we have mapped is the blue line in the second image below, which begins before the last two houses. The Class 3 measures only 0.89 in miles our mapping system and not the 1.00 AOT designated miles, so I was thinking the Class 4 might start further west where we have the private road portion starting at the turn around. Can you let me know where the Class 4 is supposed to start and the private road?

Thank you so much!

Pam

<image007.png>

<image006.png>

**From:** [DeAndrea, Pam](#)  
**To:** [steve.hall@clerk@landgrove.vermont.gov](#)  
**Cc:** [Hermanson, Tyler](#)  
**Subject:** RE: Question on TH-10 (Nichols Rd)  
**Date:** Tuesday, October 1, 2024 9:03:00 AM  
**Attachments:** [image001.png](#)  
[image005.png](#)  
[image006.png](#)  
[image007.png](#)

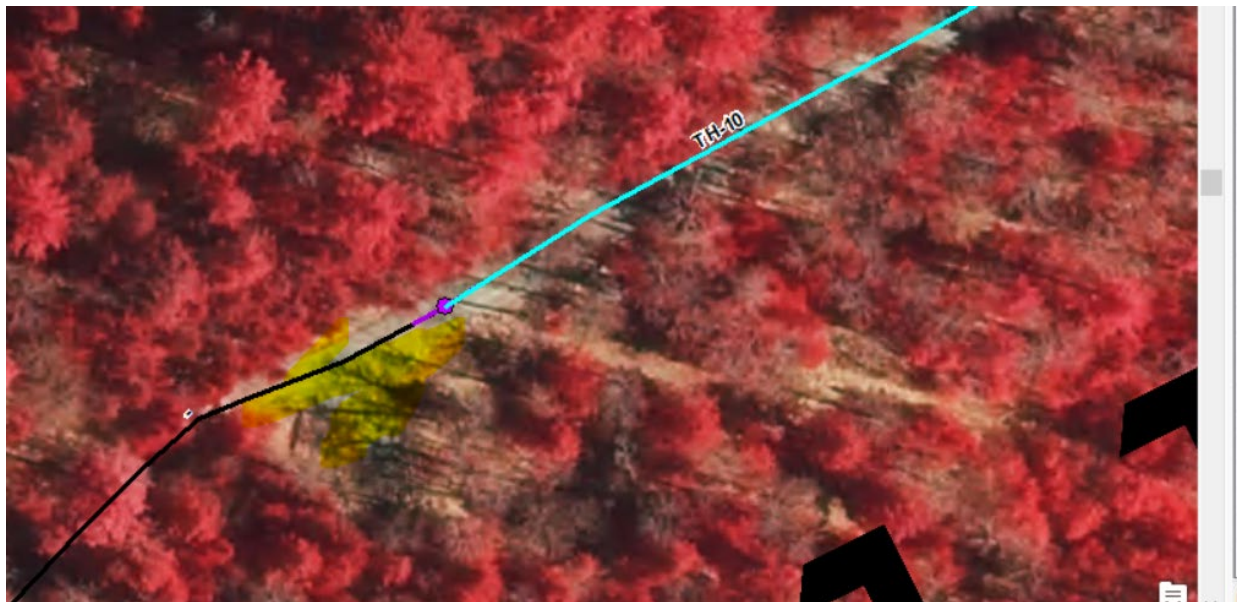
---

Thank you Steve,

Sorry it is hard to see the turn around on the imagery, but I think my red arrow was at the turn around since that is about 350' from the last driveway (see yellow highlight in first image below). What I am trying to figure out is where the Class 3 ends/Class 4 begins and where the private road begins. Is the turn around where the Class 3/Class 4 break is located? Or is it where the private road starts? If it is the Class 3/Class 4 break, we have the Class 3 and Class 4 mapped incorrectly. The class 4 section we have mapped is the blue line in the second image below, which begins before the last two houses. The Class 3 measures only 0.89 in miles our mapping system and not the 1.00 AOT designated miles, so I was thinking the Class 4 might start further west where we have the private road portion starting at the turn around. Can you let me know where the Class 4 is supposed to start and the private road?

Thank you so much!

Pam





**Pamela DeAndrea (she/her)** | AOT GIS Professional III  
Policy, Planning & Research Bureau – Mapping Section  
Policy, Planning & Intermodal Development Division  
Vermont Agency of Transportation  
219 N. Main Street | Barre, VT 05641  
802-793-7555 phone | [pam.deandrea@vermont.gov](mailto:pam.deandrea@vermont.gov)  
<http://vtrans.vermont.gov>



Help raise money for Vermonters impacted by flood damage and show your Vermont pride with *Vermont Strong* and *Tough Too* license plates and socks. [Click here to purchase your Vermont Strong gear](https://dmv.vermont.gov/VermontStrong23) or visit [DMV.Vermont.gov/VermontStrong23](https://dmv.vermont.gov/VermontStrong23).

Impacted Vermonters can find resources and referrals by visiting [Vermont.Gov/Flood](https://Vermont.Gov/Flood).

---

**From:** steve hall <schall70@gmail.com>  
**Sent:** Monday, September 30, 2024 12:39 PM  
**To:** DeAndrea, Pam <Pam.DeAndrea@vermont.gov>; CLERK@landgrove.vermont.gov  
**Cc:** Hermanson, Tyler <Tyler.Hermanson@vermont.gov>  
**Subject:** RE: Question on TH-10 (Nichols Rd)

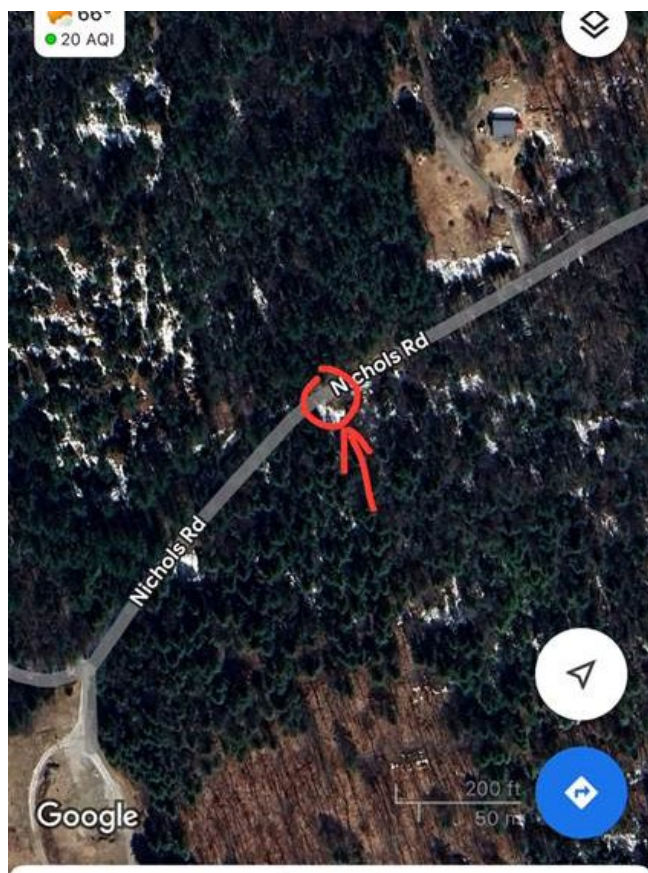
**EXTERNAL SENDER: Do not open attachments or click on links unless you recognize and trust the sender.**

Hi Pam,

The Class 3 road is 1 mile in length before it turns into a Class 4 for .11 miles as the AOT shows. There is a turnaround approx.. 365' from the last driveway, which is the transition. It isn't clear on your pictures if your red arrow is at the turnaround or not.

Red arrow below is at the turn around





Steven C. Hall

**LANDGROVE BUILDING & DESIGN CO.**

**382 Landgrove Road, Landgrove, VT 05148**

802.824.6622 w

802.430.4090 m

[www.LandgroveBuildingandDesign.com](http://www.LandgroveBuildingandDesign.com)

---

**From:** DeAndrea, Pam [<mailto:Pam.DeAndrea@vermont.gov>]

**Sent:** Friday, September 27, 2024 2:59 PM

**To:** [CLERK@landgrove.vermont.gov](mailto:CLERK@landgrove.vermont.gov); Steve Hall <[schall70@gmail.com](mailto:schall70@gmail.com)>

**Cc:** Hermanson, Tyler <[Tyler.Hermanson@vermont.gov](mailto:Tyler.Hermanson@vermont.gov)>

**Subject:** Question on TH-10 (Nichols Rd)

Good afternoon folks,

We have been notified by E911 that there may be an issue with how we have the Class 3 and Class 4 sections mapped for TH-10 (Nichols Rd). According to the Town 911 contact, the Class 3 section extends up until the last house on the road, but we have the yellow highlighted portion of TH-10 before the last house in the image below as Class 4. Can you let us know where the Class 4 section should begin for this road? The measured miles we have mapped for the Class 3 segment is 0.90 miles, but the AOT miles that is recorded for Class 3 is 1.0 miles. If we extended the Class 3/Class 4 break to 1.0 miles, this would bring it to just past the last house at the edge of the field. I have also attached the road inventory from 1988, which indicates that the Class 4 starts at 1.0 miles. Let me know where the Class 3/Class 4 break should be and we can put it on our radar for changes in 2025. Also, there is a private road section west of the Class 4 section. Let us know if where the Class 4/private road break should be as well. If the Class 4 mileage should be 0.11 miles, we have that break mapped incorrectly as well. We have the private portion starting at the red arrow in the second image below.



Best,

Pam

**Pamela DeAndrea (she/her)** | AOT GIS Professional III  
Policy, Planning & Research Bureau – Mapping Section  
Policy, Planning & Intermodal Development Division  
Vermont Agency of Transportation  
219 N. Main Street | Barre, VT 05641  
[802-793-7555 phone](tel:802-793-7555) | [pam.deandrea@vermont.gov](mailto:pam.deandrea@vermont.gov)  
<http://vtrans.vermont.gov>



Help raise money for Vermonters impacted by flood damage and show your Vermont pride with *Vermont Strong* and *Tough Too* license plates and socks. [Click here to purchase your Vermont Strong gear](https://www.dmv.vermont.gov/VermontStrong23) or visit [DMV.Vermont.gov/VermontStrong23](https://www.dmv.vermont.gov/VermontStrong23).

**From:** [Hermanson, Tyler](#)  
**To:** [Croft, Johnathan](#); [DeAndrea, Pam](#)  
**Subject:** FW: GIS Updates - Landgrove Annual Review 2023  
**Date:** Thursday, December 21, 2023 8:39:32 AM  
**Attachments:** [image001.png](#)

---

FYI more to this.

*Tyler Hermanson* GIS Specialist III  
State of Vermont Enhanced 911 Board  
6 Baldwin St, Fl 2, Montpelier VT 05633-7960  
E: [tyler.hermanson@vermont.gov](mailto:tyler.hermanson@vermont.gov) 802-279-4668  
Availability : M-F : 8am-4pm

<https://e911.vermont.gov/>

---

**From:** steve hall <[schall70@gmail.com](mailto:schall70@gmail.com)>  
**Sent:** Thursday, December 21, 2023 8:27 AM  
**To:** 'Landgrove Town Zoning' <[zoning@landgrove.vermont.gov](mailto:zoning@landgrove.vermont.gov)>; Hermanson, Tyler <[Tyler.Hermanson@vermont.gov](mailto:Tyler.Hermanson@vermont.gov)>  
**Subject:** RE: GIS Updates - Landgrove Annual Review 2023

You don't often get email from [schall70@gmail.com](mailto:schall70@gmail.com). [Learn why this is important](#)

**EXTERNAL SENDER: Do not open attachments or click on links unless you recognize and trust the sender.**

Hi Tyler and Will,

I think Sled Run Dr. and Red Pine Dr. will be fine. Both private road segments should be denoted by "Sled Run Dr. off of Old County East" or "Red Pine Dr. off of Landgrove hollow Rd." since neither Drives are town roads.

Nichols road may need some VTran mapping changes. It doesn't look like their map of the class 3 section goes far enough. The class 3 road ends at a turn around past 92,100 and 102 and continues as a class 4 for .11 miles. I can talk with VTran to see if I can get that adjusted, but yes the mileage numbers are correct (verified them last year)

Steven C. Hall

**LANDGROVE BUILDING & DESIGN CO.**  
**382 Landgrove Road, Landgrove, VT 05148**  
802.824.6622 w  
802.430.4090 m  
[www.LandgroveBuildingandDesign.com](http://www.LandgroveBuildingandDesign.com)

---

**From:** Landgrove Town Zoning [<mailto:zoning@landgrove.vermont.gov>]  
**Sent:** Thursday, December 21, 2023 7:52 AM  
**To:** Hermanson, Tyler <[Tyler.Hermanson@vermont.gov](mailto:Tyler.Hermanson@vermont.gov)>  
**Cc:** Steve Hall <[schall70@gmail.com](mailto:schall70@gmail.com)>  
**Subject:** RE: GIS Updates - Landgrove Annual Review 2023

Tyler,

The town of Landgrove wants Nichols Rd to be class three until just past the driveway for 100-102, and then class 4 to the Peru Border. We thought the .11 miles of class 4 on the state highway mileage map was the right measurement for the class 4 section.

Will Goodwin  
Landgrove Zoning Administrator

---

**From:** Hermanson, Tyler <[Tyler.Hermanson@vermont.gov](mailto:Tyler.Hermanson@vermont.gov)>



**Sent:** Wednesday, December 20, 2023 10:53 PM

**To:** Landgrove Town Zoning <[zoning@landgrove.vermont.gov](mailto:zoning@landgrove.vermont.gov)>

**Cc:** Reilly, Nancy <[Nancy.Reilly@vermont.gov](mailto:Nancy.Reilly@vermont.gov)>; DeAndrea, Pam <[Pam.DeAndrea@vermont.gov](mailto:Pam.DeAndrea@vermont.gov)>; Croft, Johnathan <[Johnathan.Croft@vermont.gov](mailto:Johnathan.Croft@vermont.gov)>

**Subject:** RE: GIS Updates - Landgrove Annual Review 2023

Hi Will,

Fixed the SLED RUN to be SLED RUN DR.... note that SLED RUN was fine, but I see the grand list has SLED RUN DR. also note that perhaps its not the best of names now, as within Landgrove you have a SLED RUN DR and a RED PINE DR they both end in Drive, but also start with Sled/ Red which may or may not get messed up on a phone call to 911 that isn't of the best quality. Something to think about. I don't think it has caused issues, but it could or perhaps already has caused issues. If that's the case, consider making this just SLED RUN as we had it.

For Nichols Rd. I don't want to change that road class yet, I've CC'd VTRANS to gather confirmation with the town. What we show matched Vtrans and they are the authority on Road class. To confirm, it sounds like you want it to be Class 3, not 4 for the section around 92, 100, 102 Nichols Rd?





*Tyler Hermanson* GIS Specialist III  
State of Vermont Enhanced 911 Board  
6 Baldwin St, Fl 2, Montpelier VT 05633-7960  
E: [tyler.hermanson@vermont.gov](mailto:tyler.hermanson@vermont.gov) 802-279-4668  
Availability : M-F : 8am-4pm

<https://e911.vermont.gov/>

---

**From:** Reilly, Nancy <[Nancy.Reilly@vermont.gov](mailto:Nancy.Reilly@vermont.gov)>  
**Sent:** Wednesday, December 20, 2023 11:34 AM  
**To:** E911 - Updates <[E911.Updates@vermont.gov](mailto:E911.Updates@vermont.gov)>  
**Cc:** Johnson, Soni <[Soni.Johnson@vermont.gov](mailto:Soni.Johnson@vermont.gov)>  
**Subject:** GIS Updates - Landgrove Annual Review 2023

Good morning,

The attached GIS Updates arrived via post with the Landgrove Annual Review:

- Road Name Index: Sled Run **DRIVE**
- Nichols Rd, change in Class (see image)

Thanks,

*Nancy Reilly*  
E911 Program Technician I  
6 Baldwin St. – 2<sup>nd</sup> Floor  
Montpelier VT 05633-7960  
(802)828-4911