

OK JPK

CERTIFICATE OF HIGHWAY MILEAGE year ending FEB. 10, 1994

Fill out form, make & file COPY with the Town Clerk, & mail ORIGINAL before Feb. 10, 1994 to: Vt. Agency of Transportation, Planning Dept., 133 State Street, Montpelier, Vt. 05633.

< IF NO CHANGES IN MILEAGE, OMIT PART I, CHECK PART II, SIGN PART III >

We, the Selectmen or Trustees or Aldermen of WEYBRIDGE, ADDISON COUNTY on an oath state that the mileage of highways, according to Title 19, V.S.A. Sec#305, added 1985, is as follows:

PART I - CHANGES & TOTALS - Please fill in and calculate totals.

DISTRICT 5

TOWN HIGHWAYS	PREVIOUS MILEAGE	ADDED MILEAGE	SUBTRACTED MILEAGE	* SCENIC HIGHWAYS	TOTAL
CLASS 1	.000			*	*
CLASS 2	15.510			*	15.510
CLASS 3	16.730	0.020		*	17.000
STATE HWY	.221			*	.221
<b>TOTAL</b>	<b>32.461</b>			*	<b>32.731</b>
CLASS 4	.460	<del>0.270</del>	0.370	*	0.090

PART II - INFORMATION & DESCRIPTION OF CHANGES SHOWN ABOVE.

- (1) NEW HIGHWAYS: Please attach Selectmen's "Certificate of Completion and Opening".  
Orchard Lane: - 1/4 mile
- (2) DISCONTINUED: Please attach SIGNED copy of proceedings(minutes of meeting).  
T-18 -0.37 Class 4 (proof on file)
- (3) RECLASSIFIED/REMEASURED: Please attach SIGNED copy of proceedings(minutes of meetings).  
Revision A - T-21 - 0.04 Class 3; T-13 +0.06 Class 3
- (4) SCENIC HIGHWAYS: Please attach copy of order designating/discontinuing Scenic Highways.

PART II - CHECK BOX IF NO CHANGES IN MILEAGES AND SIGN BELOW [ ]

PART III - SIGNATURES - PLEASE SIGN.

SELECTMEN/ALDERMEN/TRUSTEES SIGNATURES:

Handwritten signatures: Peter G. James, James T. Depina, etc.

CLERK SIGNATURE: Handwritten signature of Karen Curran

DATE FILED 1/13/94

Please sign ORIGINAL & return for Transportation signature.

AGENCY OF TRANSPORTATION APPROVAL: Signed copy will be returned to T/C/V Clerk.

APPROVED: Donald C. Harvey Representative, Agency of Transportation

DATE: 1/18/94

CERTIFICATE OF HIGHWAY MILEAGE year ending FEB. 10, 1994

Fill out form, make & file COPY with the Town Clerk & mail ORIGINAL before Feb. 10, 1994 to:  
 VT. Agency of Transportation, Planning Dept., 133 State Street, Montpelier, VT. 05602

**TRANSPORTATION**

**JAN 14 1994**

**PLANNING DIVISION**

on an oath state that the mileage of highways, according to Title 19, § 242, is as follows:  
 We, the Selectmen or Trustees or Aldermen of WEYBRIDGE

DISTRICT 5

PART I - CHANGES & TOTALS - Please fill in and calculate totals.

TOWN HIGHWAYS	PREVIOUS MILEAGE	ADDED MILEAGE	SUBTRACTED MILEAGE	TOTAL	* SCENIC HIGHWAYS
CLASS 1	000				*
CLASS 2	15.510			15.510	*
CLASS 3	16.730	0.020		17.000	*
STATE HWY	.221			.221	*
<b>TOTAL</b>	<b>32.461</b>			<b>32.751</b>	
CLASS 4	0.460	0.210	0.370	0.300	*

PART II - INFORMATION & DESCRIPTION OF CHANGES SHOWN ABOVE.  
 (1) NEW HIGHWAYS: Please attach Selectmen's Certificate of Completion and Opening.  
 OTC ROAD - 1.4 mile

(2) DISCONTINUED: Please attach SIGNED copy of proceedings (minutes of meeting).  
 T-18 - 0.37 Class 4 (p/rot on file)

(3) RECLASSIFIED/REMEASURED: Please attach SIGNED copy of proceedings (minutes of meeting).  
 Revision A - T-21 - 0.04 Class 3; T-13 + 0.06 Class 3

(4) SCENIC HIGHWAYS: Please attach copy of order designating/discontinuing Scenic Highways.

PART II - CHECK BOX IF NO CHANGES IN MILEAGES AND SIGN BELOW [ ]

PART III - SIGNATURES - PLEASE SIGN  
 SELECTMEN/ALDERMEN/TRUSTEES  
 SIGNATURES:

*James C. [Signature]*  
*[Signature]*  
*[Signature]*

CLERK SIGNATURE: *[Signature]*  
 Please sign ORIGINAL & return for Transportation signature.  
 DATE FILED: 1/13/94

AGENCY OF TRANSPORTATION APPROVAL: Signed copy will be returned to T/C/V Clerk.

APPROVED: *James C. [Signature]*  
 Representative, Agency of Transportation  
 DATE: 1/13/94

CERTIFICATE OF COMPLETION AND OPENING OF A HIGHWAY FOR PUBLIC TRAVEL

Karen Curavoo, Town Clerk of the Town of Weybridge, Vermont.

Pursuant to Title 19, V.S.A., Section 15, as amended 1973, this is to certify that the following described section of Class 3 Highway in the Town of Weybridge was COMPLETED AND OPEN FOR PUBLIC TRAVEL on November 9, 1993.

DESCRIPTION OF RIGHT-OF WAY: BEGINNING  
Northerly edge of Pulp Mill Bndge Road; also known as Orchard Lane,  
and proceeding approximately 1/4 mile; which is the entire road.

and as shown on a Highway Map of Weybridge, Vermont Tax Maps, dated 4/1, 1993, and filed in Book \_\_\_\_\_ on page \_\_\_\_\_ of the Records of the Town of Weybridge by the Town Clerk of said Town incorporated herein by reference and attested to on said map by said Town Clerk.

Dated at Weybridge, County of Addison and State of Vermont, this 9 day of November, A.D., 1993.

*David Peck  
Orchard Lane*

Peter C. Jones BOARD  
James D. Phynny OF  
John Peck SELECTMEN  
ALDERMEN  
TRUSTEES

and the MAYOR of the City of \_\_\_\_\_  
\*\*\*\*\*

Weybridge, VERMONT  
November 9, 1993.

THE ABOVE IS A TRUE COPY OF THE DESCRIPTION OF THE CLASS 3 HIGHWAY COMPLETED AND OPENED FOR PUBLIC TRAVEL, RECORDED IN BOOK 32 ON PAGE 450 OF THE Land RECORDS OF THE Town OF Weybridge ON THE 9<sup>th</sup> DAY OF November, 1993, AT \_\_\_\_\_ O'CLOCK, \_\_\_\_\_ M.

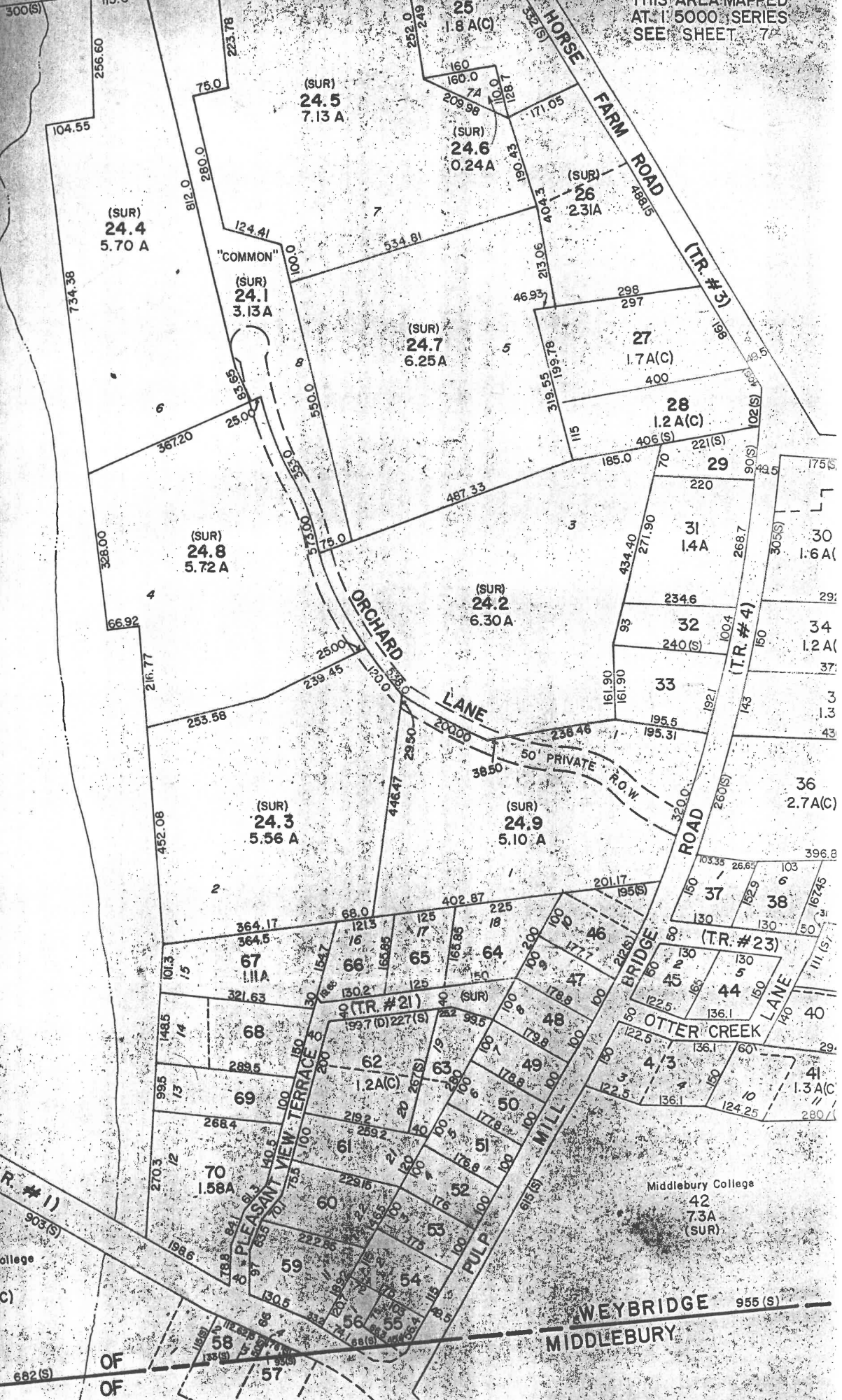
ATTEST: Karen Curavoo  
Town CLERK OF Weybridge, VERMONT.



THIS AREA MAPPED AT 1:5000 SERIES SEE SHEET 7

20

23.2  
66.0 A



OF  
OF

Middlebury College  
42  
7.3 A  
(SUR)

Middlebury College  
71  
6.0 A(C)

WEYBRIDGE  
MIDDLEBURY