

- | | |
|--|--|
| <ul style="list-style-type: none"> Interstate Divided U.S. Highway U.S. Highway Ramp U.S. Highway State Highway - Paved State Highway - Gravel State Highway Ramp - Paved Class 1 - Paved Class 2 - Paved Class 2 - Gravel Class 2 - Graded Earth Class 3 - Paved Class 3 - Gravel Class 3 - Graded Earth Class 3 - Unimproved / Primitive Class 4 - Paved Class 4 - Gravel Class 4 - Graded Earth Class 4 - Unimproved / Primitive Class 4 - Impassable or Untraveled National or State Forest Highway Legal Trail Unconfirmed Legal Trail Private Discontinued Winter Road Closure | <ul style="list-style-type: none"> 2 - Principal Arterial - Other Freeway 3 - Principal Arterial - Other 4 - Minor Arterial 5 - Major Collector 6 - Minor Collector |
| <ul style="list-style-type: none"> Railroad Rail Trail Airport | <ul style="list-style-type: none"> State/Town Bridge or Culvert Greater than 20' State Bridge or Culvert 6' - 20' Bike Path Structure Town Bridge 6' - 20' Town Culvert 6' - 20' VT Trans Maintenance District Office Named Lake-Pond Unnamed Lake-Pond Named River-Stream Unnamed River-Stream Public Land - State/Municipal Green Mountain National Forest District Boundary Town Boundary |

2.2 Distance along linear referenced highway (route log measure)
B20 / C20 State Bridge or Culvert Identifier
B20 / C20 Town Bridge or Culvert Identifier

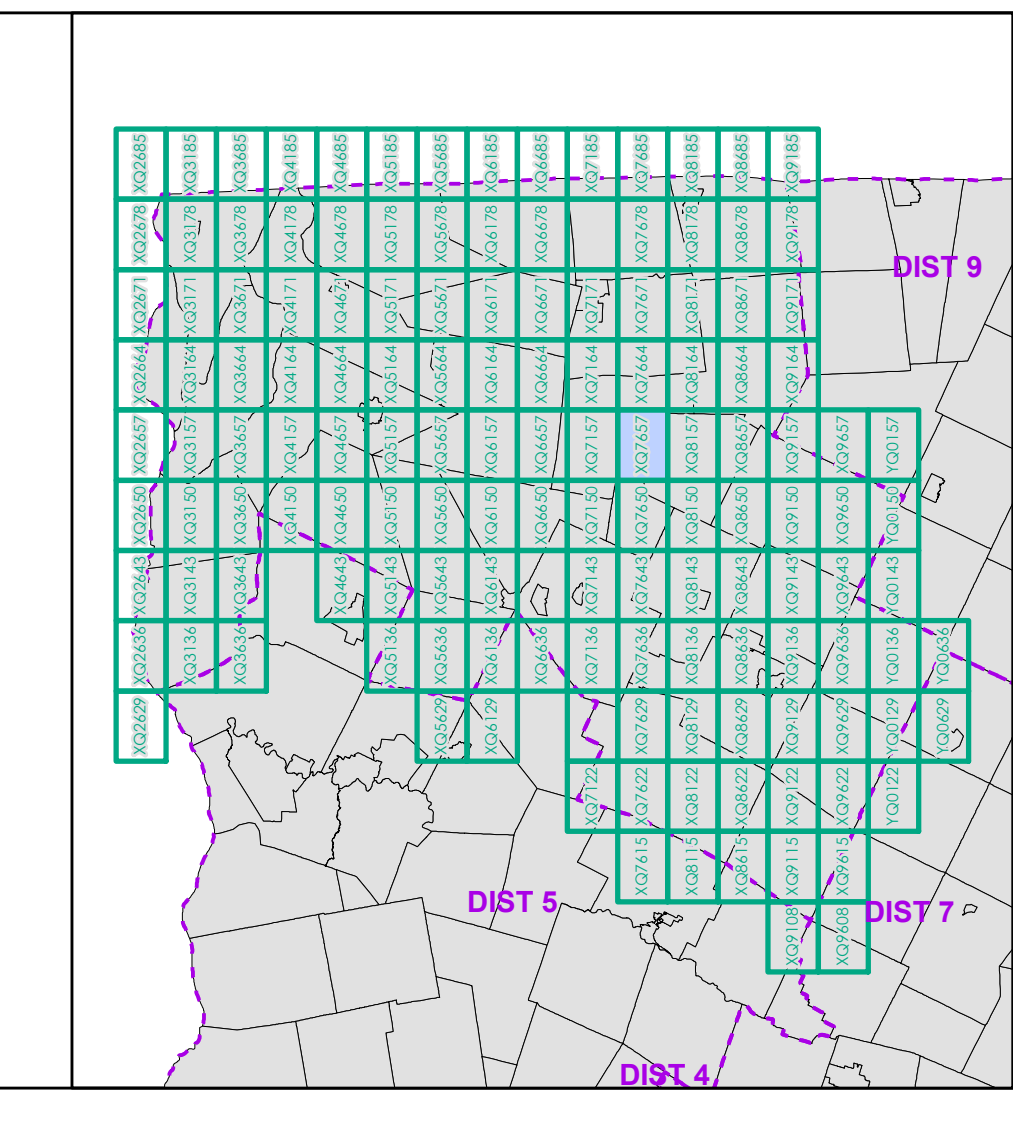
1,000 meter US National Grid
 North American Datum 1983
 Grid Zone Designation: 18T

Vermont State Plane Coordinate System
 North American Datum of 1983
 SPCS Zone Identifier: 4400
 Geodetic Reference System 80
 500-meter grid, Easting - Northing

Map generated: 11 August 2017

Contact information:
 Vermont Agency of Transportation, Mapping Section
 1 National Life Drive, Montpelier, VT 05633-5001
 Telephone: 802-828-2600

This map was funded in part through grants from the Federal Highway Administration, U.S. Department of Transportation. The representation of the authors expressed herein do not necessarily state or reflect those of the U.S. Department of Transportation.



0 0.2 0.4 0.6 0.8 Miles
 Scale 1:12,672 (printed size: 24 x 36 inches)

FIELD ASSESSMENT MAP SERIES
 USNG Page #: **18TXQ7657**
 Sheet ID: **QX7657**
 District: **8**

TOWNS INCLUDED ON SHEET
 Bakersfield
 Belvidere
 Waterville