

- Interstate
- Interstate Ramp
- Divided U.S. Highway
- U.S. Highway Ramp
- U.S. Highway
- State Highway - Paved
- State Highway - Gravel
- State Highway Ramp - Paved
- Class 1 - Paved
- Class 2 - Paved
- Class 2 - Gravel
- Class 2 - Graded Earth
- Class 3 - Paved
- Class 3 - Gravel
- Class 3 - Graded Earth
- Class 3 - Unimproved / Primitive
- Class 4 - Paved
- Class 4 - Gravel
- Class 4 - Graded Earth
- Class 4 - Unimproved / Primitive
- Class 4 - Impassable or Untraveled
- National or State Forest Highway
- Legal Trail
- Unconfirmed Legal Trail
- Private
- Discontinued
- Winter Road Closure

Functional Class

- 2 - Principal Arterial - Other Freeway
- 3 - Principal Arterial - Other
- 4 - Minor Arterial
- 5 - Major Collector
- 6 - Minor Collector

Railroad

- Railroad
- Rail Trail
- Airport

Bridge-Culvert

- State/Town Bridge or Culvert Greater than 20'
- State Bridge or Culvert 6' - 20'
- Bike Path Structure
- Town Bridge 6' - 20'
- Town Culvert 6' - 20'
- VT Trans Maintenance District Office
- Named Lake-Pond
- Unnamed Lake-Pond
- Named River-Stream
- Unnamed River-Stream
- Public Land - State/Municipal
- Green Mountain National Forest
- District Boundary
- Town Boundary

2.2 Distance along linear referenced highway (route log measure)

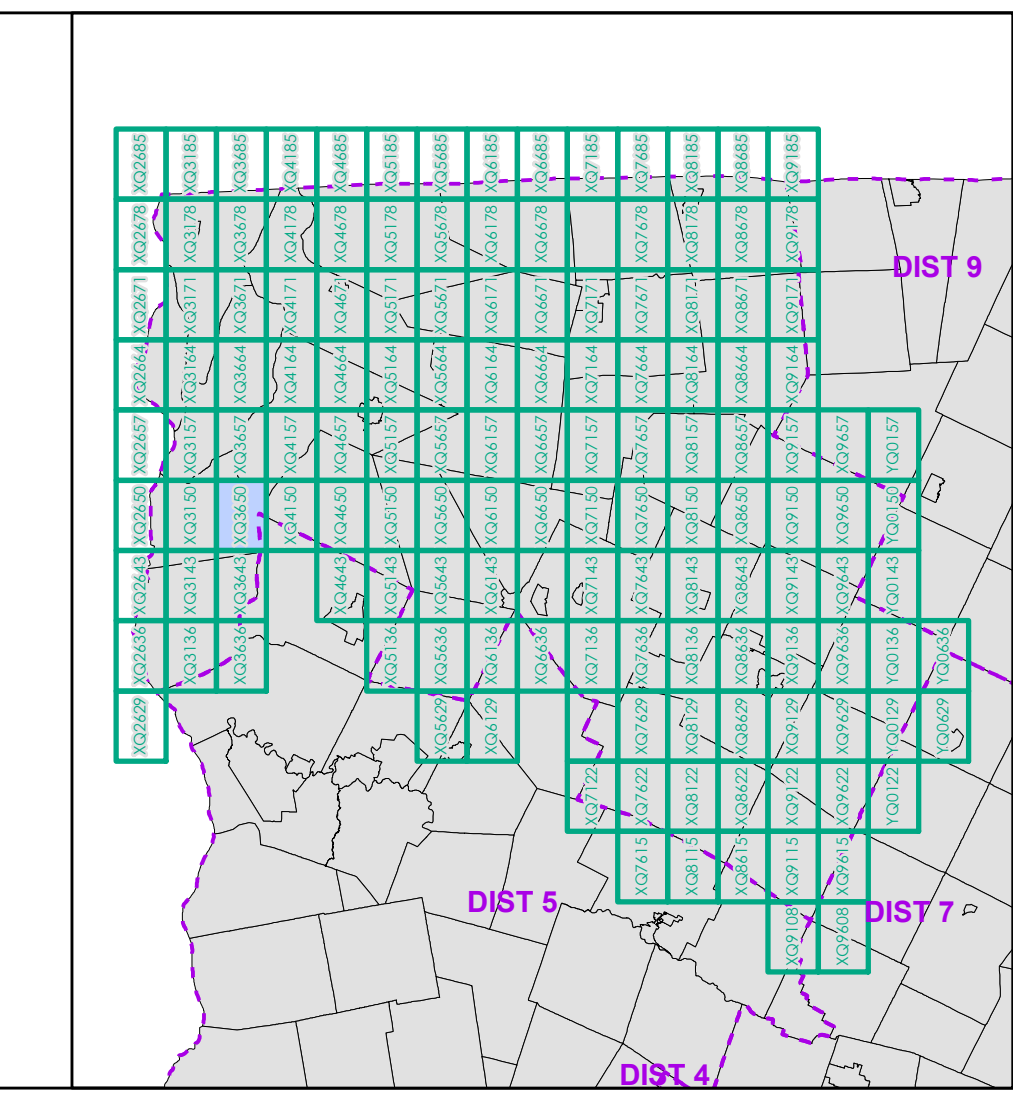
B20 / C20 State Bridge or Culvert Identifier
B20 / C20 Town Bridge or Culvert Identifier

1,000 meter US National Grid
North American Datum 1983
SPCS Zone Identifier: 4400
Geodetic Reference System 80
500-meter grid, Easting - Northing

Map generated: 11 August 2017

Contact information:
Vermont Agency of Transportation, Mapping Section
1 National Life Drive, Montpelier, VT 05633-5001
Telephone: 802-828-2600

This map was funded in part through grants from the Federal Highway Administration, U.S. Department of Transportation. The representation of the authors expressed herein do not necessarily state or reflect those of the U. S. Department of Transportation.



0 0.2 0.4 0.6 0.8 Miles
Scale 1:12,672 (printed size: 24 x 36 inches)

FIELD ASSESSMENT MAP SERIES
USNG Page #: 18TXQ3650
Sheet ID: QX3650
District: 8

TOWNS INCLUDED ON SHEET
Georgia
Grand Isle
Milton
North Hero
South Hero
St. Albans