

- Interstate
- Interstate Ramp
- Divided U.S. Highway
- U.S. Highway Ramp
- U.S. Highway
- State Highway - Paved
- State Highway - Gravel
- State Highway Ramp - Paved
- Class 1 - Paved
- Class 2 - Paved
- Class 2 - Gravel
- Class 2 - Graded Earth
- Class 3 - Paved
- Class 3 - Graded Earth
- Class 3 - Unimproved / Primitive
- Class 4 - Paved
- Class 4 - Gravel
- Class 4 - Graded Earth
- Class 4 - Unimproved / Primitive
- Class 4 - Impassable or Untraveled
- National or State Forest Highway
- Legal Trail
- Unconfirmed Legal Trail
- Private
- Discontinued
- Proposed Highway

Functional Class

- 2 - Principal Arterial - Other Freeways and Expressways
- 3 - Principal Arterial - Other
- 4 - Minor Arterial
- 5 - Major Collector
- 6 - Minor Collector

Bridge/Culvert

- Bridge or Culvert Greater than 20'
- Bridge or Culvert 6' - 20'
- ▲ VOB/CIT Bridge
- ▼ VOB/CIT Culvert

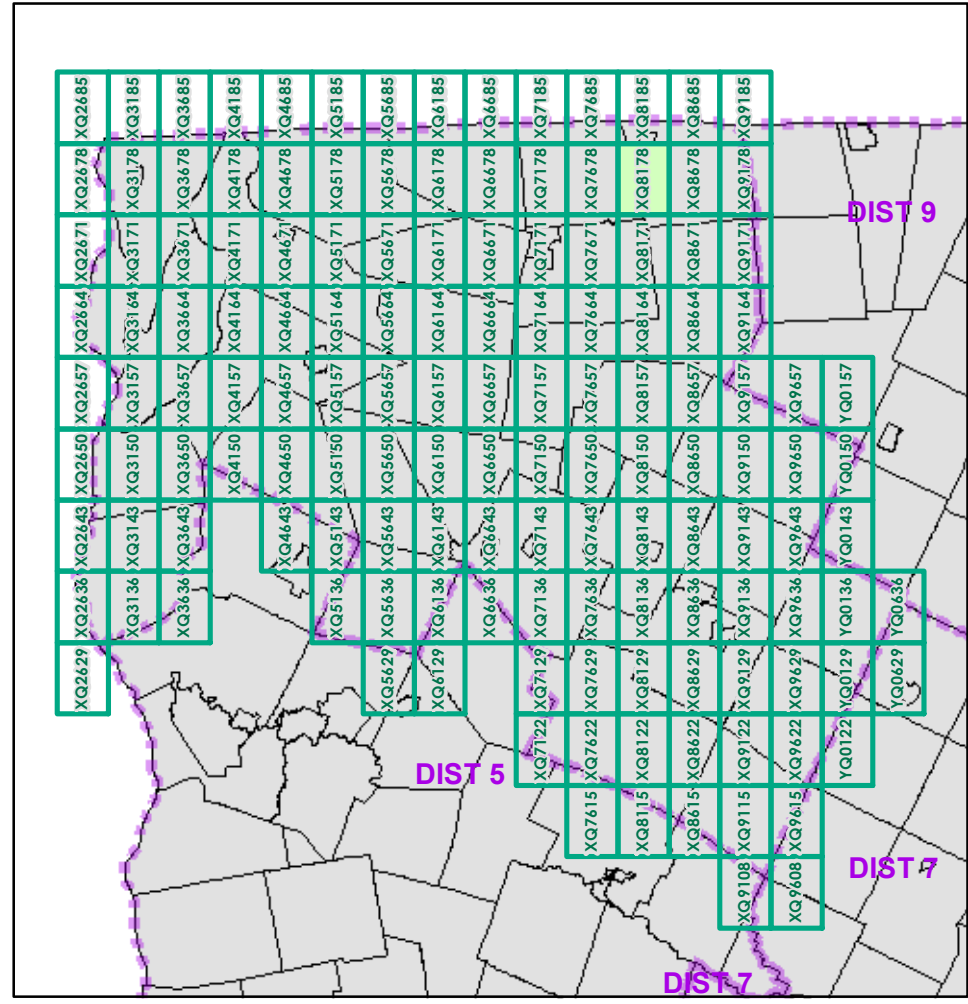
Railroad

- Railroad
- Inactive Railroad - Rail Trail
- D VTrans District Office
- Building
- Cemetery
- Airport
- Named Lake-Pond
- Unnamed Lake-Pond
- Named River-Stream
- Unnamed River-Stream
- Public Land
- U.S. National Grid 18T 5x7Tile
- District Boundary
- Town Boundary

Map generated: 30 October 2015

Contact information:
 Vermont Agency of Transportation, Mapping Section
 1 National Life Drive, Montpelier, VT 05633-5001
 Telephone: 802-828-2600

This map was funded in part through grants from the Federal Highway Administration, U.S. Department of Transportation. The representation of the authors expressed herein do not necessarily state or reflect those of the U.S. Department of Transportation.



0 0.2 0.4 Miles

Scale 1:12,672 (printed size: 24 x 36 inches)

FIELD ASSESSMENT MAP SERIES

USNG Page #: **18TXQ8178**

Sheet ID: **QX8178**

District: **8**

TOWNS INCLUDED ON SHEET

Berkshire
 Enosburg
 Montgomery
 Richford
 U.C.

2.2 Distance along linear referenced Highway (route log measure)

B20 / C20 State Bridge or Culvert Identifier

B20 / C20 Town Bridge or Culvert Identifier