

Functional Class

- Interstate
- Interstate Ramp
- Divided U.S. Highway
- U.S. Highway Ramp
- U.S. Highway
- State Highway - Paved
- State Highway - Gravel
- State Highway Ramp - Paved
- Class 1 - Paved
- Class 2 - Paved
- Class 2 - Gravel
- Class 2 - Graded Earth
- Class 3 - Paved
- Class 3 - Graded Earth
- Class 3 - Unimproved / Primitive
- Class 4 - Paved
- Class 4 - Gravel
- Class 4 - Graded Earth
- Class 4 - Unimproved / Primitive
- Class 4 - Impassable or Untraveled
- National or State Forest Highway
- Legal Trail
- Unconfirmed Legal Trail
- Private
- Discontinued
- Winter Road Closure

2.2 Distance along linear referenced highway (route log measure)

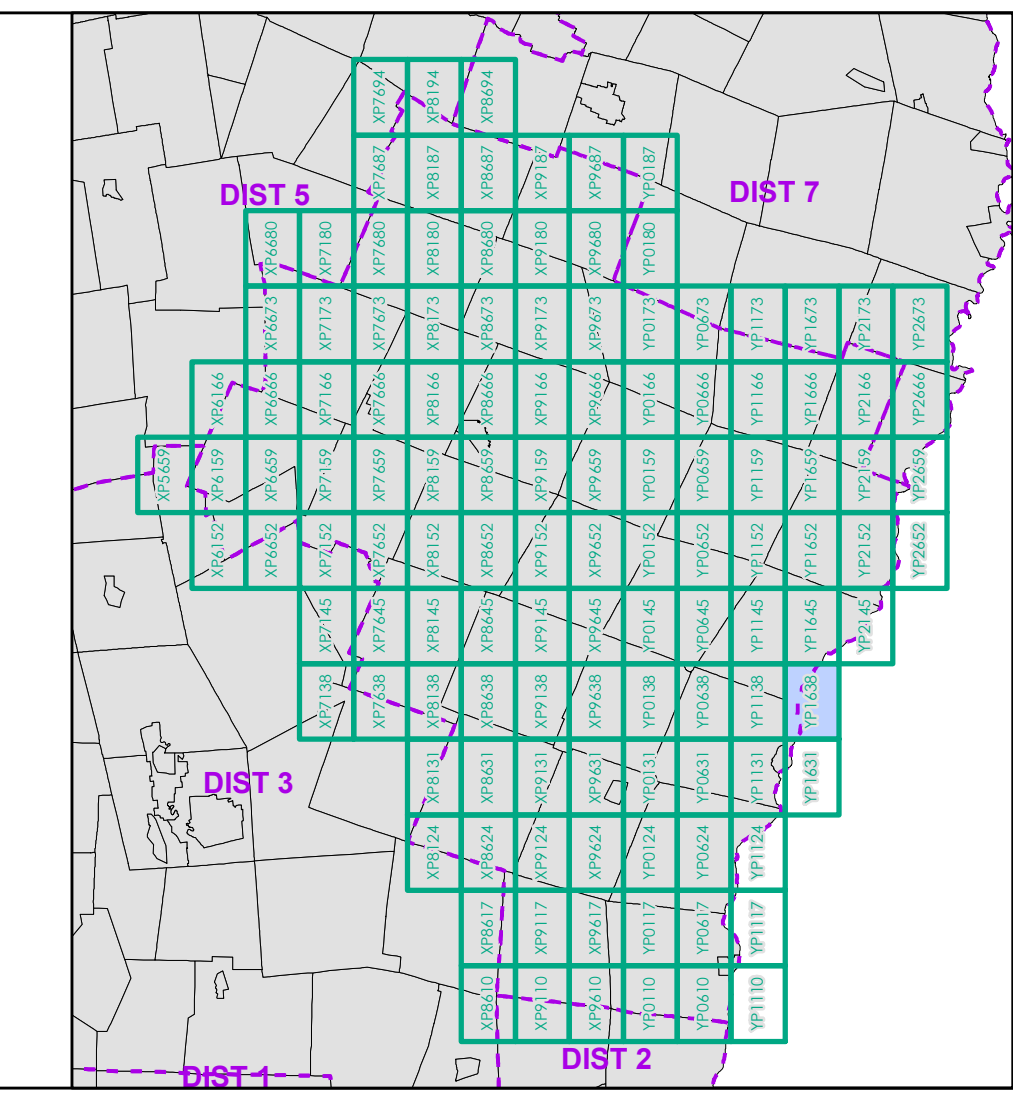
B20 / C20 State Bridge or Culvert Identifier
B20 / C20 Town Bridge or Culvert Identifier

1,000 meter US National Grid
 North American Datum 1983
 SPCS Zone Identifier: 4400
 Geodetic Reference System 80
 500-meter grid, Easting - Northing

Map generated: 22 August 2017

Contact information:
 Vermont Agency of Transportation, Mapping Section
 1 National Life Drive, Montpelier, VT 05633-5001
 Telephone: 802-828-2600

This map was funded in part through grants from the Federal Highway Administration, U.S. Department of Transportation. The representation of the authors expressed herein do not necessarily state or reflect those of the U. S. Department of Transportation.



0 0.2 0.4 0.6 0.8 Miles
 Scale 1:12,672 (printed size: 24 x 36 inches)

FIELD ASSESSMENT MAP SERIES
 USNG Page #: 18TYP1638
 Sheet ID: YP1638
 District: 4

TOWNS INCLUDED ON SHEET
 Hartford
 Norwich
 White River Jct. Urban Compact
 Wilder Urban Compact