

- Interstate
  - Interstate Ramp
  - Divided U.S. Highway
  - U.S. Highway Ramp
  - U.S. Highway
  - State Highway - Paved
  - State Highway - Gravel
  - State Highway - Ramp - Paved
  - Class 1 - Paved
  - Class 2 - Paved
  - Class 2 - Gravel
  - Class 2 - Graded Earth
  - Class 3 - Paved
  - Class 3 - Gravel
  - Class 3 - Graded Earth
  - Class 3 - Unimproved / Primitive
  - Class 4 - Paved
  - Class 4 - Gravel
  - Class 4 - Graded Earth
  - Class 4 - Unimproved / Primitive
  - Class 4 - Impassable or Untraveled
  - National or State Forest Highway
  - Legal Trail
  - Unconfirmed Legal Trail
  - Private
  - Discontinued
  - Proposed Highway
- Functional Class**
- 2 - Principal Arterial - Other Freeways and Expressways
  - 3 - Principal Arterial - Other
  - 4 - Minor Arterial
  - 5 - Major Collector
  - 6 - Minor Collector
- Bridge-Culvert**
- Bridge or Culvert Greater than 20'
  - Bridge or Culvert 6' - 20'
  - VOBCIT Bridge
  - VOBCIT Culvert
- Railroad**
- Railroad
  - Inactive Railroad - Rail Trail
  - VTrans District Office
  - Building
  - Cemetery
  - Airport
  - Named Lake-Pond
  - Unnamed Lake-Pond
  - Named River-Stream
  - Unnamed River-Stream
  - Public Land
  - U.S. National Grid 18T 5x7Tile
  - District Boundary
  - Town Boundary
- 2.2 Distance along linear referenced Highway (route log measure)**
- B20 / C20 State Bridge or Culvert Identifier**  
**B20 / C20 Town Bridge or Culvert Identifier**

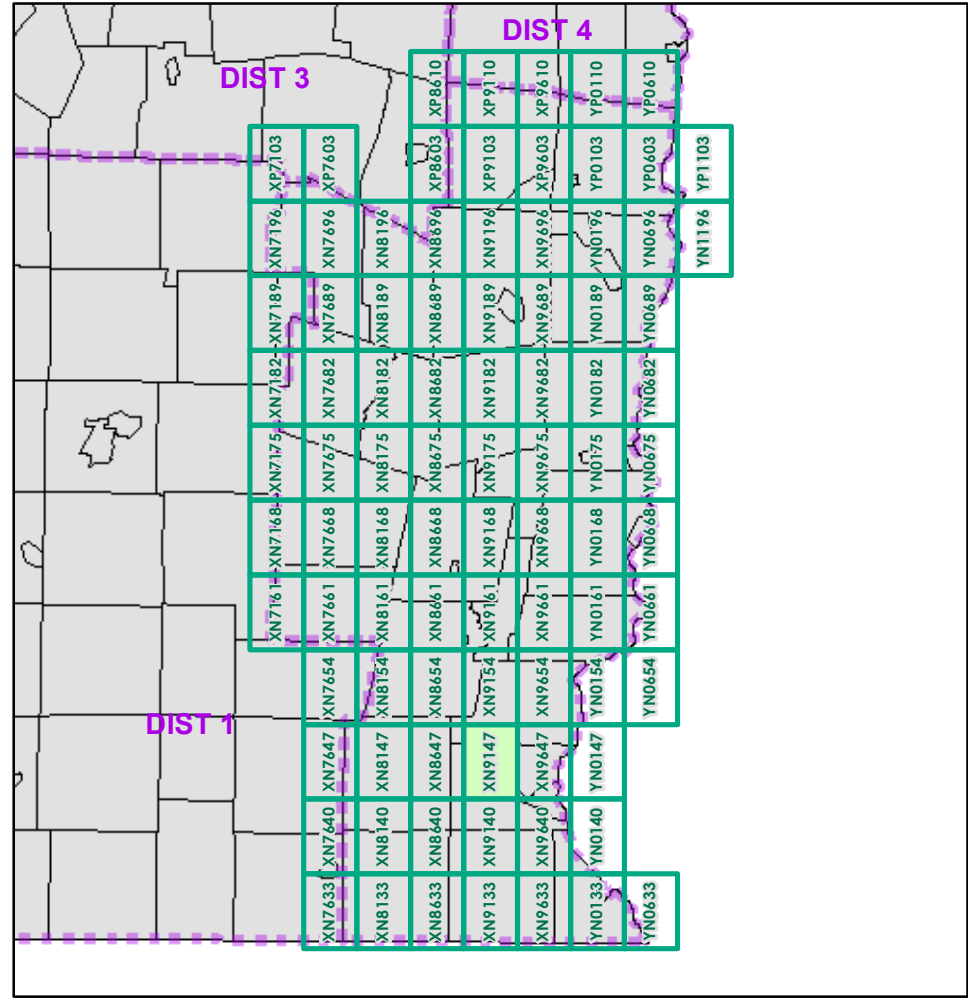
1,000 meter US National Grid  
 North American Datum 1983  
 Grid Zone Designation: 18T

Vermont State Plane Coordinate System  
 North American Datum of 1983  
 SPCS\_Zone\_Identifier: 4400  
 Geodetic Reference System 80  
 500-meter grid, Easting - Northing

Map generated: 26 October 2015

Contact information:  
 Vermont Agency of Transportation, Mapping Section  
 1 National Life Drive, Montpelier, VT 05633-5001  
 Telephone: 802-828-2600

This map was funded in part through grants from the Federal Highway Administration, U.S. Department of Transportation. The representation of the authors expressed herein do not necessarily state or reflect those of the U.S. Department of Transportation.



0 0.2 0.4 Miles  
 Scale 1:12,672 (printed size: 24 x 36 inches)

**FIELD ASSESSMENT MAP SERIES**  
 USNG Page #: 18TXN9147  
 Sheet ID: XN9147  
 District: 2

**TOWNS INCLUDED ON SHEET**  
 Brattleboro  
 Brattleboro-W. Brattleboro U.C.  
 Brattleboro-W. Brattleboro U.C.  
 Dummerston  
 Newfane