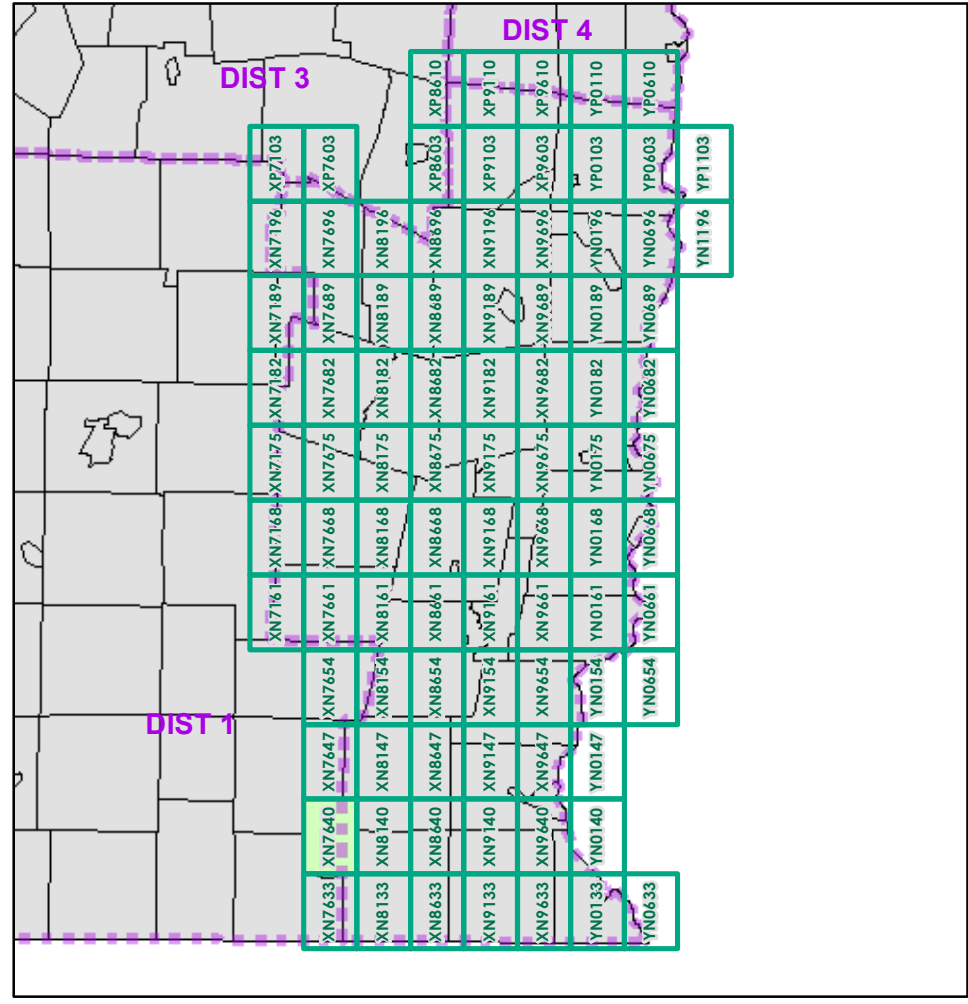


- | | | |
|--|--|--|
| <ul style="list-style-type: none"> — Interstate — Interstate Ramp — Divided U.S. Highway — U.S. Highway Ramp — U.S. Highway — State Highway - Paved — State Highway - Gravel — State Highway - Paved - Gravel — Class 1 - Paved — Class 2 - Paved — Class 2 - Gravel — Class 2 - Graded Earth — Class 3 - Paved — Class 3 - Gravel — Class 3 - Graded Earth — Class 3 - Unimproved / Primitive — Class 4 - Paved — Class 4 - Gravel — Class 4 - Graded Earth — Class 4 - Unimproved / Primitive — Class 4 - Impassable or Untraveled — National or State Forest Highway — Legal Trail — Unconfirmed Legal Trail — Private — Discontinued — Proposed Highway | <p>Functional Class</p> <ul style="list-style-type: none"> — 2 - Principal Arterial - Other Freeways and Expressways — 3 - Principal Arterial - Other — 4 - Minor Arterial — 5 - Major Collector — 6 - Minor Collector <p>Bridge-Culvert</p> <ul style="list-style-type: none"> ■ Bridge or Culvert Greater than 20' ● Bridge or Culvert 6' - 20' ▲ VOB/CIT Bridge ▲ VOB/CIT Culvert <p>Railroad</p> <ul style="list-style-type: none"> — Railroad — Inactive Railroad - Rail Trail D VTrans District Office ■ Building ■ Cemetery ■ Airport ■ Named Lake-Pond ■ Unnamed Lake-Pond ■ Named River-Stream ■ Unnamed River-Stream ■ Public Land ■ U.S. National Grid 18T 5x7Tile ■ District Boundary ■ Town Boundary ■ Proposed Highway | <p>1,000 meter US National Grid
North American Datum 1983
Grid Zone Designation: 18T</p> <p>Vermont State Plane Coordinate System
North American Datum of 1983
SPCS_Zone_Identifier: 4400
Geodetic Reference System 80
500-meter grid, Easting - Northing</p> <p>Map generated: 26 October 2015</p> <p>Contact information:
Vermont Agency of Transportation, Mapping Section
1 National Life Drive, Montpelier, VT 05633-5001
District Number: 802-828-2600</p> <p>This map was funded in part through grants from the Federal Highway Administration, U.S. Department of Transportation. The representation of the authors expressed herein do not necessarily state or reflect those of the U. S. Department of Transportation.</p> |
|--|--|--|



0 0.2 0.4 Miles
Scale 1:12,672 (printed size: 24 x 36 inches)

FIELD ASSESSMENT MAP SERIES
USNG Page #: **18TXN7640**
Sheet ID: **XN7640**
District: **2**

TOWNS INCLUDED ON SHEET
Halifax
Jacksonville Village
Marlboro
Whitingham
Wilmington