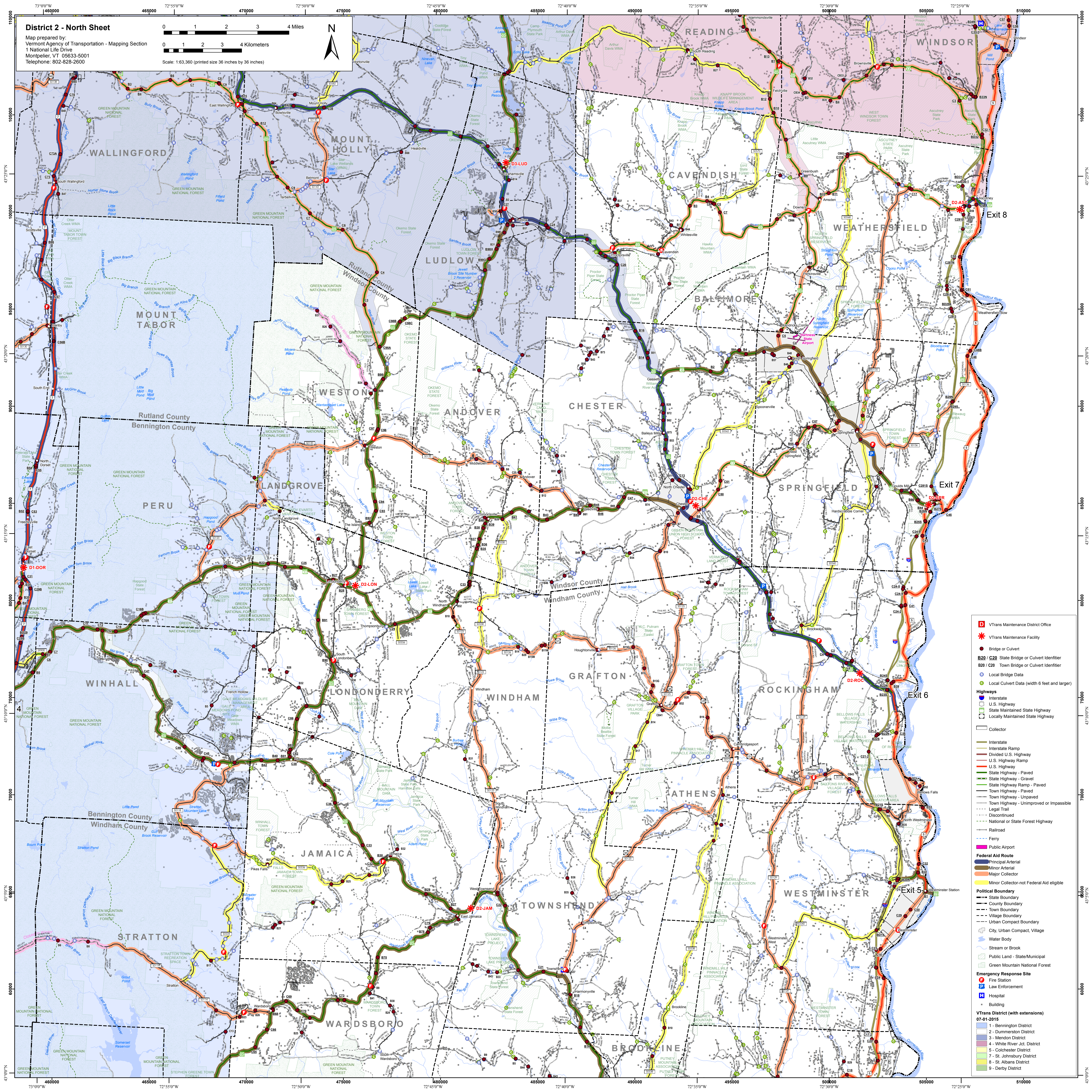
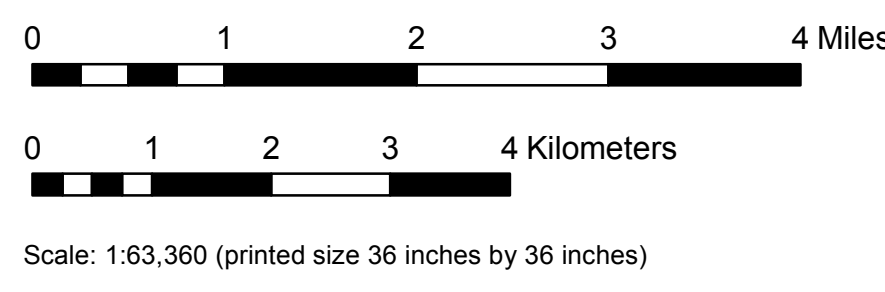


District 2 - North Sheet

Map prepared by:
Vermont Agency of Transportation - Mapping Section
1 National Life Drive
Montpelier, VT 05633-5001
Telephone: 802-828-2600



Legend

- VTans Maintenance District Office** (Red square with 'D')
- VTans Maintenance Facility** (Red star)
- Bridge or Culvert** (Red circle)
- B20 / C20 State Bridge or Culvert Identifier** (Red circle with 'B20' or 'C20')
- Town Bridge or Culvert Identifier** (Red circle with 'T')
- Local Bridge Data** (Blue circle)
- Local Culvert Data (width 6 feet and larger)** (Green circle)

Highways

- Interstate (Blue line)
- U.S. Highway (Yellow line)
- State Maintained State Highway (Green line)
- Locally Maintained State Highway (Light green line)
- Collector (Grey line)
- Interstate Ramp (Yellow line)
- Divided U.S. Highway (Yellow line with red center)
- U.S. Highway Ramp (Yellow line with red center)
- U.S. Highway (Yellow line)
- State Highway - Paved (Green line)
- State Highway - Unpaved (Light green line)
- Town Highway - Paved (Light green line)
- Town Highway - Unpaved (Light green line)
- Town Highway - Improvised or Impossible (Dashed light green line)
- Legal Trail (Dashed grey line)
- Discontinued (Dashed grey line)
- National or State Forest Highway (Dashed grey line)
- Railroad (Black line)
- Ferry (Blue line)

Federal Aid Route

- Principal Arterial (Blue line)
- Minor Arterial (Red line)
- Major Collector (Orange line)
- Minor Collector-not Federal Aid eligible (Yellow line)

Political Boundary

- State Boundary (Dashed black line)
- County Boundary (Dashed black line)
- Town Boundary (Dashed black line)
- Village Boundary (Dashed black line)
- Urban Compact Boundary (Dashed black line)
- City, Urban Compact, Village (Blue outline)

Water Body

- Water Body (Blue area)
- Stream or Brook (Blue line)
- Public Land - State/Municipal (Light blue area)
- Green Mountain National Forest (Light green area)

Emergency Response Site

- Fire Station (Red circle with 'F')
- Law Enforcement (Blue square)
- Hospital (Blue square with 'H')
- Building (Black square)

VTans District (with extensions) 07-01-2015

- 1 - Bennington District (Light blue)
- 2 - Dummerston District (Light blue)
- 3 - Mendon District (Light blue)
- 4 - White River Jct. District (Light blue)
- 5 - Colchester District (Light blue)
- 7 - St. Johnsbury District (Light blue)
- 8 - St. Albans District (Light blue)
- 9 - Derby District (Light blue)