

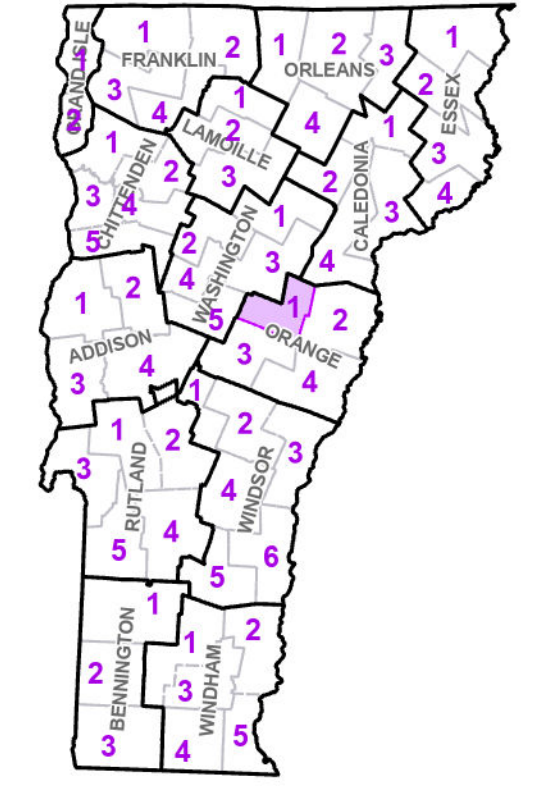
- Interstate
  - U.S. Route
  - Vermont Route
  - Town Highway
  - Interstate
  - US Route Divided
  - US Route
  - State Route Paved
  - State Route Unpaved
  - Town Highway Paved
  - Town Highway Unpaved
  - Unimproved or Impossible
  - Discontinued Highway
  - Town Legal Trail
  - Winter Road Closure
  - Railroad
  - Principal Arterial
  - Minor Arterial
  - Major Collector
  - Minor Collector - Urban
  - Minor Collector - Rural (not Federal Aid eligible)
  - VTrans Maintenance District Office
- Emergency Response Site**
- Fire Station
  - Law Enforcement
  - Hospital
  - Building
  - Localities
  - State Capital (Montpelier)
  - Localities
  - Bridge or Culvert
  - Water Body
  - Stream or Brook
  - Public Airport
  - State Boundary
  - County Boundary
  - Town Boundary
  - Village Boundary
  - Urban Compact Boundary
  - Public Land - State/Municipal
  - Green Mountain National Forest
  - County Subtle

TOWNSHIP
CORINTH
ORANGE
PLAINFIELD
WASHINGTON
WILLIAMSTOWN

**B20 / C20** State Bridge or Culvert Identifier

**B20 / C20** Town Bridge or Culvert Identifier

Vermont State Plane Coordinate System  
 North American Datum of 1983  
 SPCS Zone Identifier: 4400  
 Geodetic Reference System 80  
 5,000-meter grid, Easting - Northing



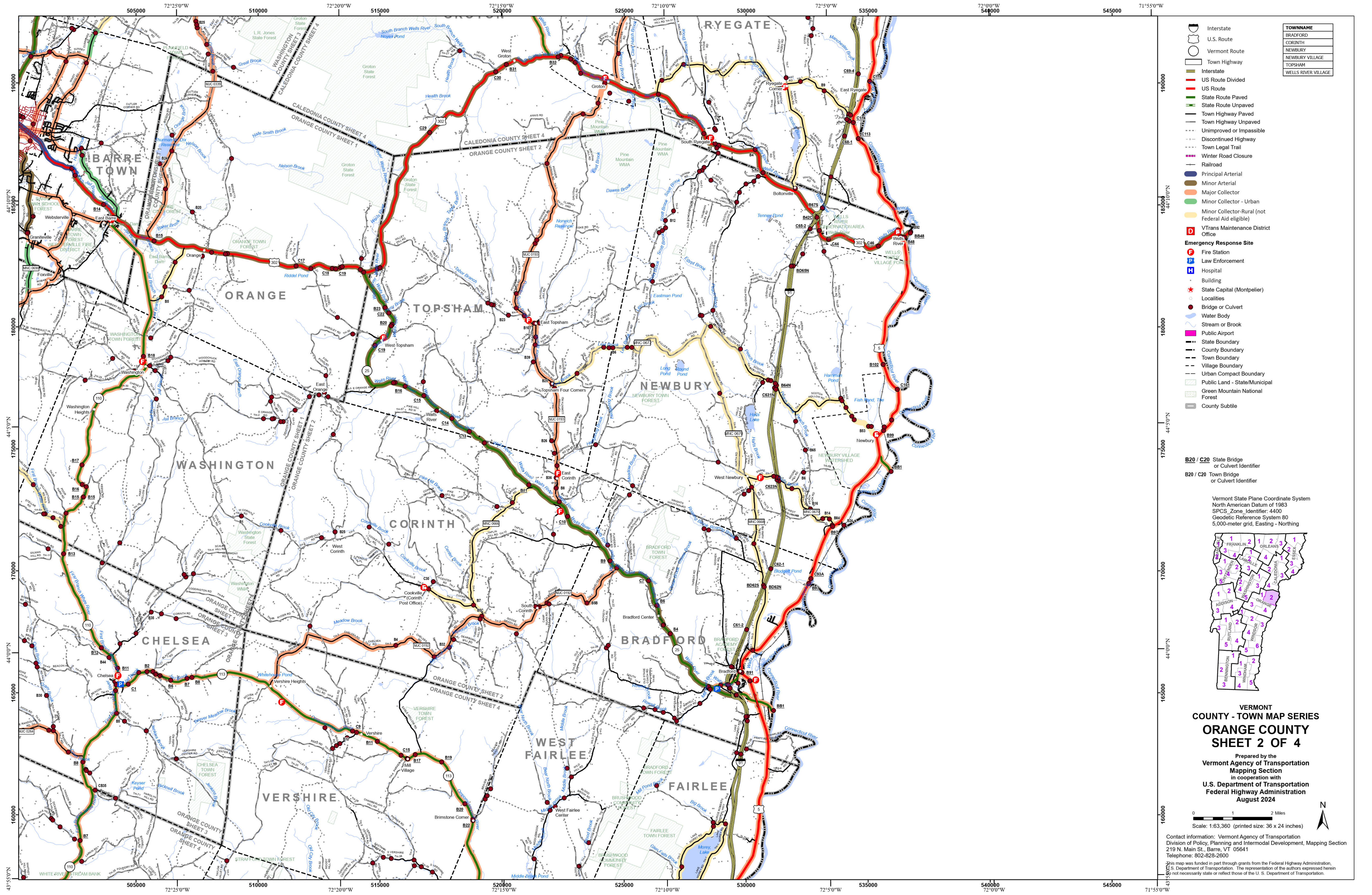
**VERMONT COUNTY - TOWN MAP SERIES**  
**ORANGE COUNTY**  
**SHEET 1 OF 4**

Prepared by the  
 Vermont Agency of Transportation  
 Mapping Section  
 in cooperation with  
 U.S. Department of Transportation  
 Federal Highway Administration  
 August 2024



Contact information: Vermont Agency of Transportation  
 Division of Policy, Planning and Intermodal Development, Mapping Section  
 219 N. Main St., Barre, VT 05641  
 Telephone: 802-828-2600

This map was funded in part through grants from the Federal Highway Administration, U.S. Department of Transportation. The representation of the authors expressed herein do not necessarily state or reflect those of the U.S. Department of Transportation.

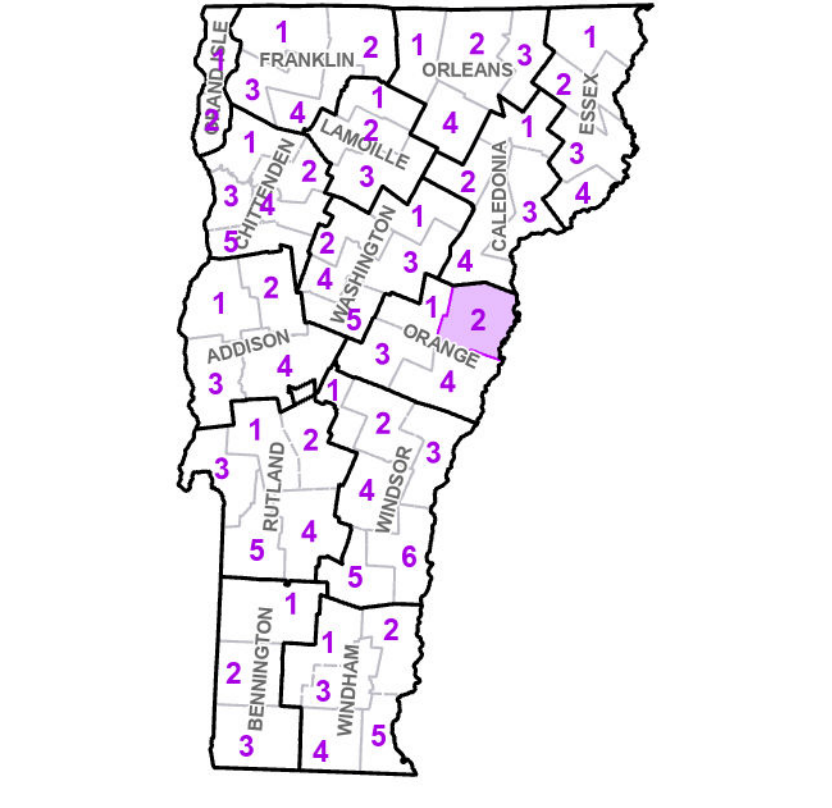


- Interstate
- U.S. Route
- Vermont Route
- Town Highway
- Interstate
- US Route Divided
- US Route
- State Route Paved
- State Route Unpaved
- Town Highway Paved
- Town Highway Unpaved
- Unimproved or Impossible
- Discontinued Highway
- Town Legal Trail
- Winter Road Closure
- Railroad
- Principal Arterial
- Minor Arterial
- Major Collector
- Minor Collector - Urban
- Minor Collector - Rural (not Federal Aid eligible)
- VTrans Maintenance District Office

TOWNSHIP
BRADFORD
CORINTH
NEWBURY
NEWBURY VILLAGE
TOPSHAM
WELLS RIVER VILLAGE

- Fire Station
- Law Enforcement
- Hospital
- Building
- State Capital (Montpelier)
- Localities
- Bridge or Culvert
- Water Body
- Stream or Brook
- Public Airport
- State Boundary
- County Boundary
- Town Boundary
- Village Boundary
- Urban Compact Boundary
- Public Land - State/Municipal
- Green Mountain National Forest
- County Subtle

B20 / C20 State Bridge or Culvert Identifier  
 B20 / C20 Town Bridge or Culvert Identifier



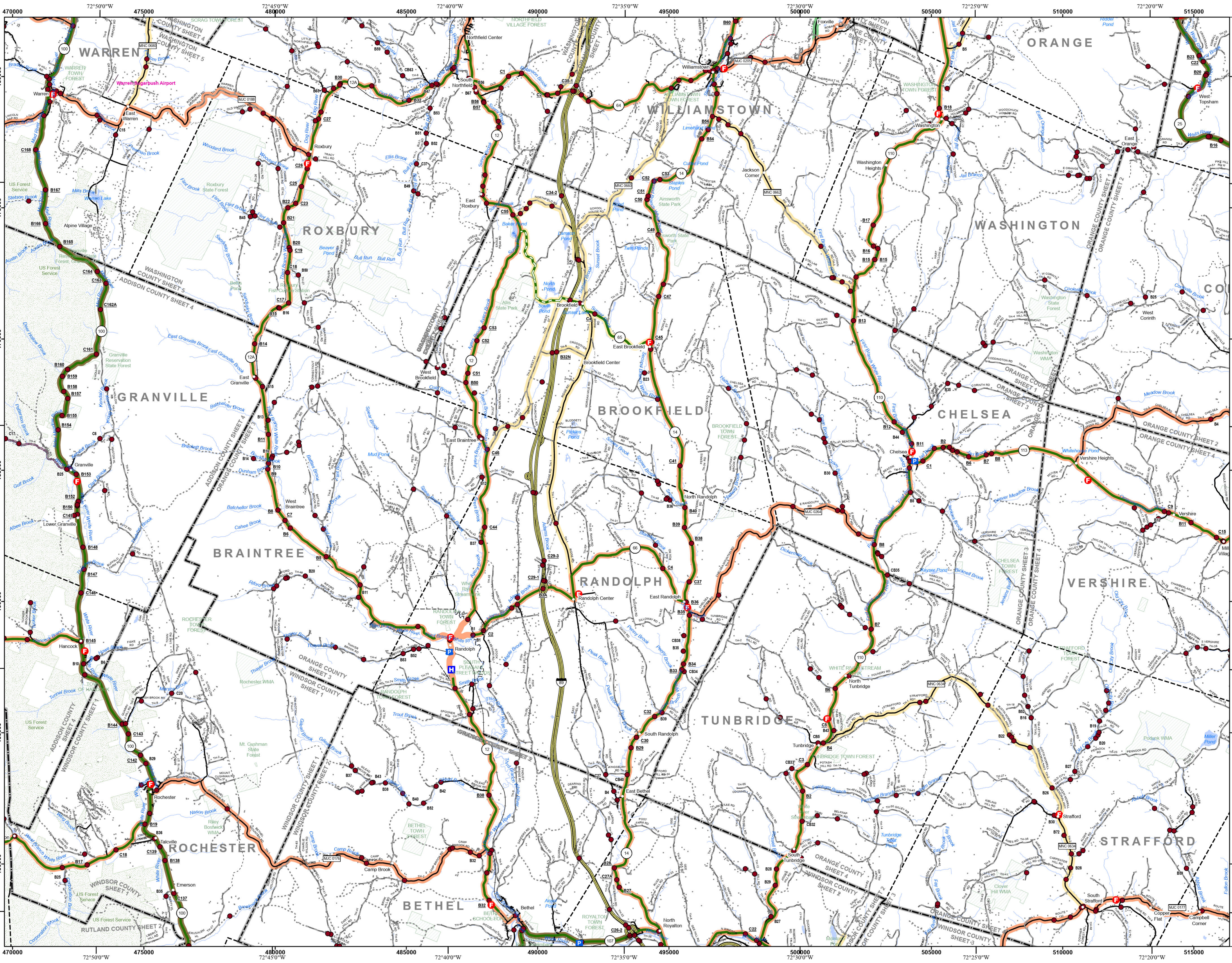
VERMONT  
 COUNTY - TOWN MAP SERIES  
**ORANGE COUNTY**  
 SHEET 2 OF 4

Prepared by the  
 Vermont Agency of Transportation  
 Mapping Section  
 in cooperation with  
 U.S. Department of Transportation  
 Federal Highway Administration  
 August 2024



Contact information: Vermont Agency of Transportation  
 Division of Policy, Planning and Intermodal Development, Mapping Section  
 219 N. Main St., Barre, VT 05641  
 Telephone: 802-828-2600

This map was funded in part through grants from the Federal Highway Administration, U.S. Department of Transportation. The representation of the authors expressed herein does not necessarily state or reflect those of the U.S. Department of Transportation.

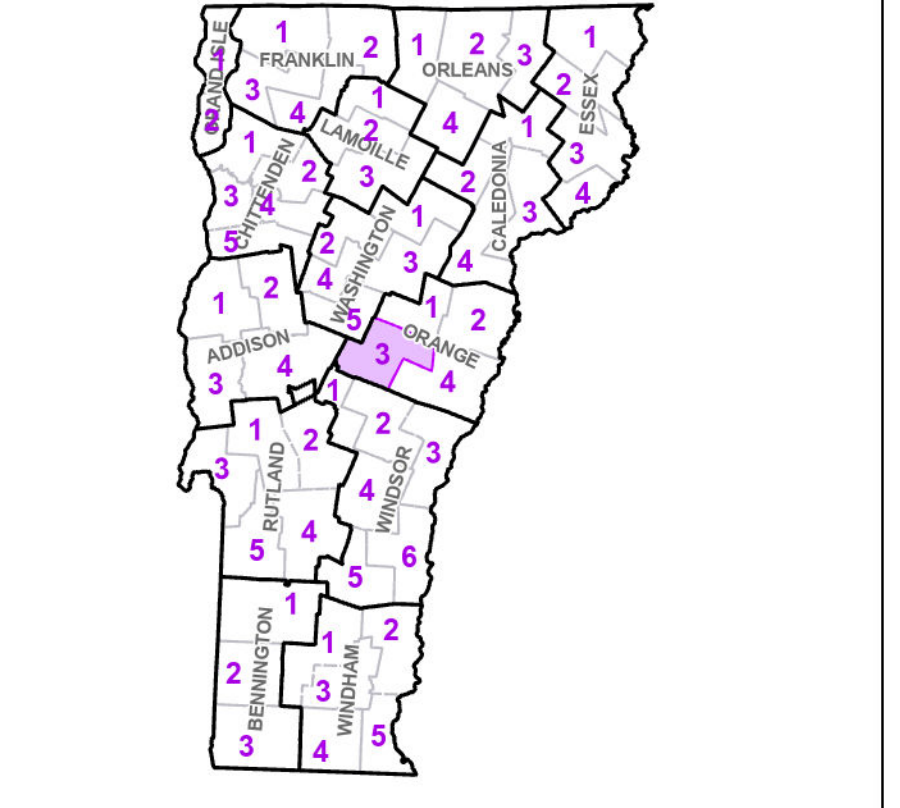


- Interstate
- U.S. Route
- Vermont Route
- Town Highway
- Interstate
- US Route
- State Route Paved
- State Route Unpaved
- Town Highway Paved
- Town Highway Unpaved
- Unimproved or Impossible
- Discontinued Highway
- Town Legal Trail
- Winter Road Closure
- Railroad
- Principal Arterial
- Minor Arterial
- Major Collector
- Minor Collector - Urban
- Minor Collector - Rural (not Federal Aid eligible)
- VTrans Maintenance District Office

TOWNNAME
BRAINTREE
BROOKFIELD
CHELSEA
RANDOLPH
RANDOLPH URBAN COMPACT
WILLIAMSTOWN

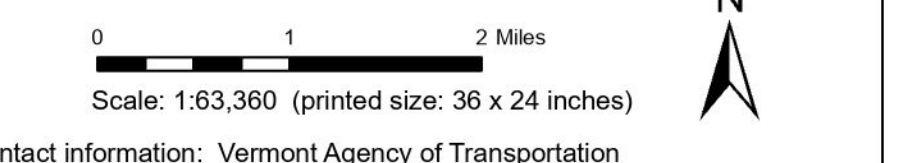
- Emergency Response Site
- Fire Station
- Law Enforcement
- Hospital
- Building
- State Capital (Montpelier)
- Localities
- Bridge or Culvert
- Water Body
- Stream or Brook
- Public Airport
- State Boundary
- County Boundary
- Town Boundary
- Village Boundary
- Urban Compact Boundary
- Public Land - State/Municipal
- Green Mountain National Forest
- County Subtle

B20 / C20 State Bridge or Culvert Identifier  
 B20 / C20 Town Bridge or Culvert Identifier

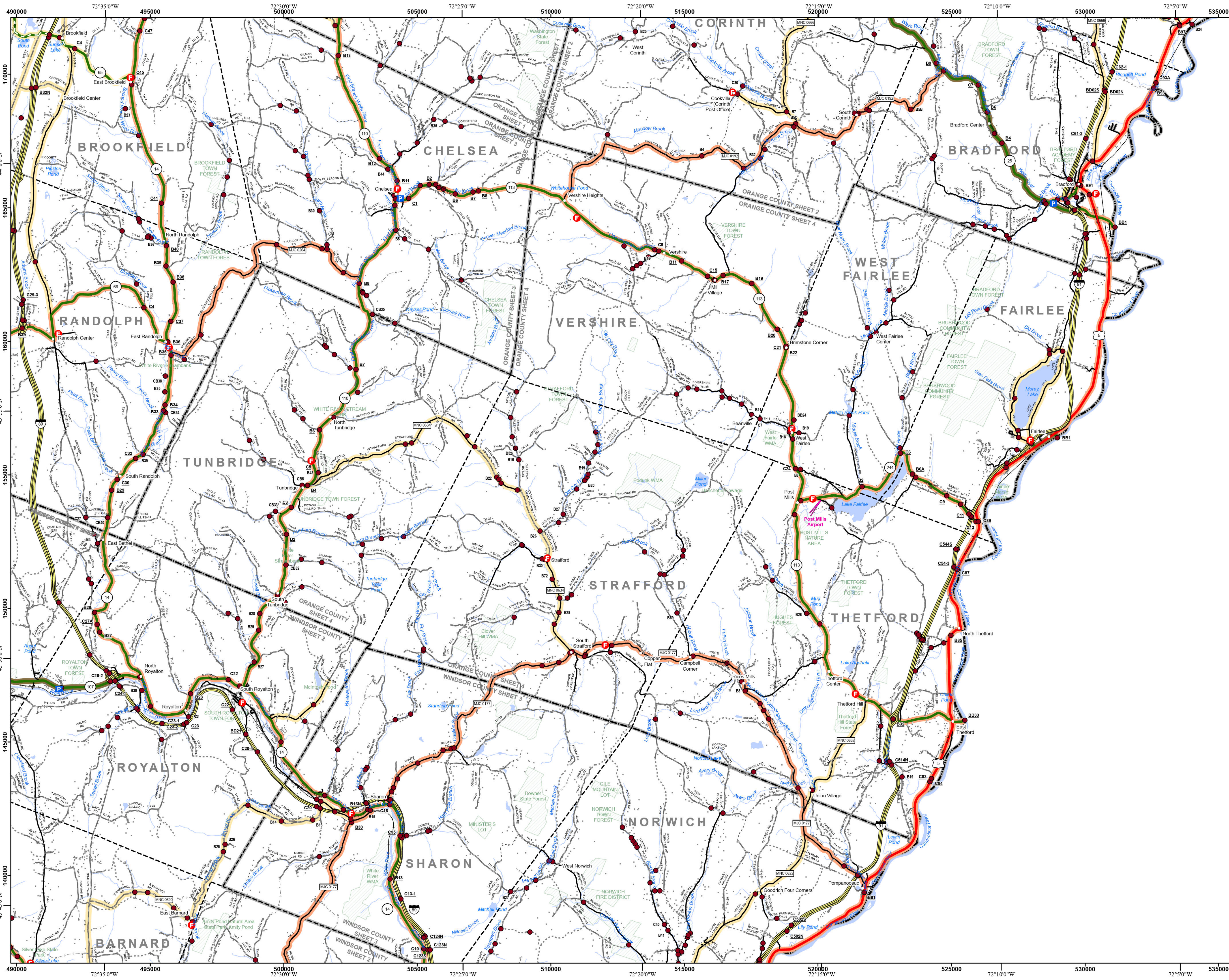


VERMONT COUNTY - TOWN MAP SERIES  
**ORANGE COUNTY SHEET 3 OF 4**

Prepared by the Vermont Agency of Transportation Mapping Section in cooperation with U.S. Department of Transportation Federal Highway Administration August 2024



Contact information: Vermont Agency of Transportation  
 Division of Policy, Planning and Intermodal Development, Mapping Section  
 19 N. Main St., Barre, VT 05641  
 Telephone: 802-828-2600  
 This map was funded in part through grants from the Federal Highway Administration, U.S. Department of Transportation. The representation of the authors expressed herein do not necessarily state or reflect those of the U.S. Department of Transportation.



TOWNNAME	
FAIRLEE	
SHARON	
STRAFFORD	
TUNBRIDGE	
VERSHIRE	
WEST FAIRLEE	

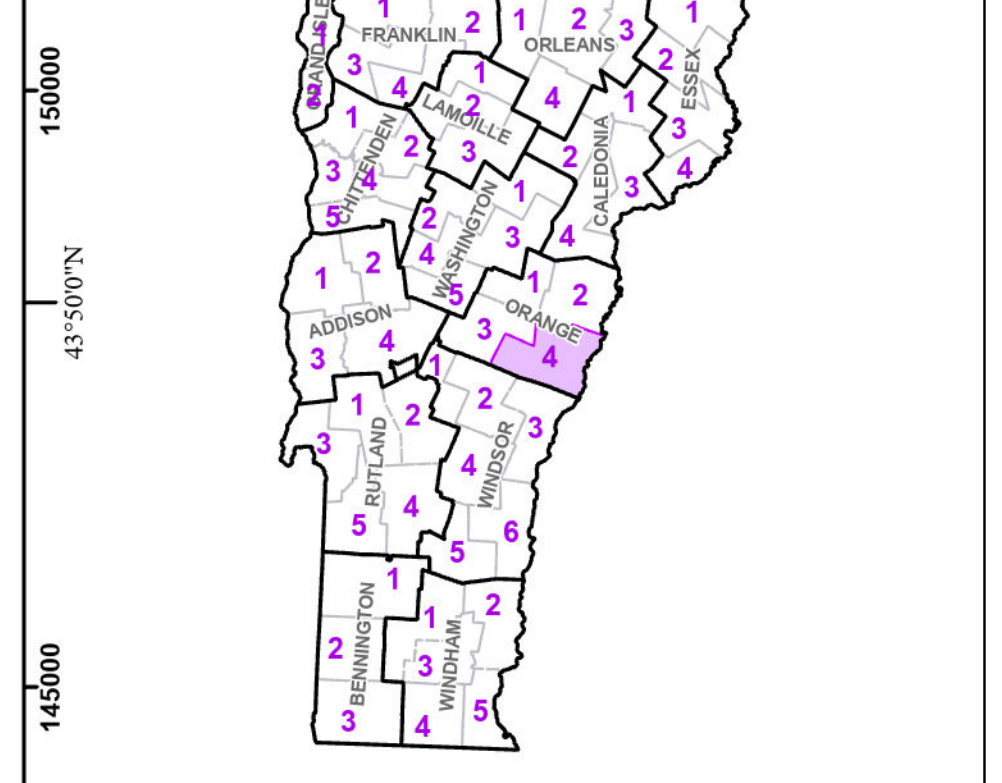
- Interstate
- U.S. Route
- Vermont Route
- Town Highway
- Interstate
- US Route Divided
- US Route
- State Route Paved
- State Route Unpaved
- Town Highway Paved
- Town Highway Unpaved
- Unimproved or Impossible
- Discontinued Highway
- Town Legal Trail
- Winter Road Closure
- Railroad
- Principal Arterial
- Minor Arterial
- Major Collector
- Minor Collector - Urban
- Minor Collector-Rural (not Federal Aid eligible)
- VTrans Maintenance District Office

**Emergency Response Site**

- Fire Station
- Law Enforcement
- Hospital
- Building
- State Capital (Montpelier)
- Localities
- Bridge or Culvert
- Water Body
- Stream or Brook
- Public Airport
- State Boundary
- County Boundary
- Town Boundary
- Village Boundary
- Urban Compact Boundary
- Public Land - State/Municipal
- Green Mountain National Forest
- County Subtle

B20 / C20 State Bridge or Culvert Identifier  
 B20 / C20 Town Bridge or Culvert Identifier

Vermont State Plane Coordinate System  
 North American Datum of 1983  
 SPCS Zone Identifier: 4400  
 Geodetic Reference System 80  
 5,000-meter grid, Easting - Northing



**VERMONT COUNTY - TOWN MAP SERIES**  
**ORANGE COUNTY**  
**SHEET 4 OF 4**

Prepared by the  
**Vermont Agency of Transportation**  
 Mapping Section  
 in cooperation with  
**U.S. Department of Transportation**  
 Federal Highway Administration  
 August 2024



Contact information: Vermont Agency of Transportation  
 Division of Policy, Planning and Intermodal Development, Mapping Section  
 219 N. Main St., Barre, VT 05641  
 Telephone: 802-828-2600

This map was funded in part through grants from the Federal Highway Administration, U.S. Department of Transportation. The representation of the authors expressed herein do not necessarily state or reflect those of the U.S. Department of Transportation.