

TOWNNAME	
BAKERSFIELD	FRANKLIN COUNTY SHEET 1
BELVIDERE	FRANKLIN COUNTY SHEET 2
EDEN	FRANKLIN COUNTY SHEET 3
WATERVILLE	FRANKLIN COUNTY SHEET 4

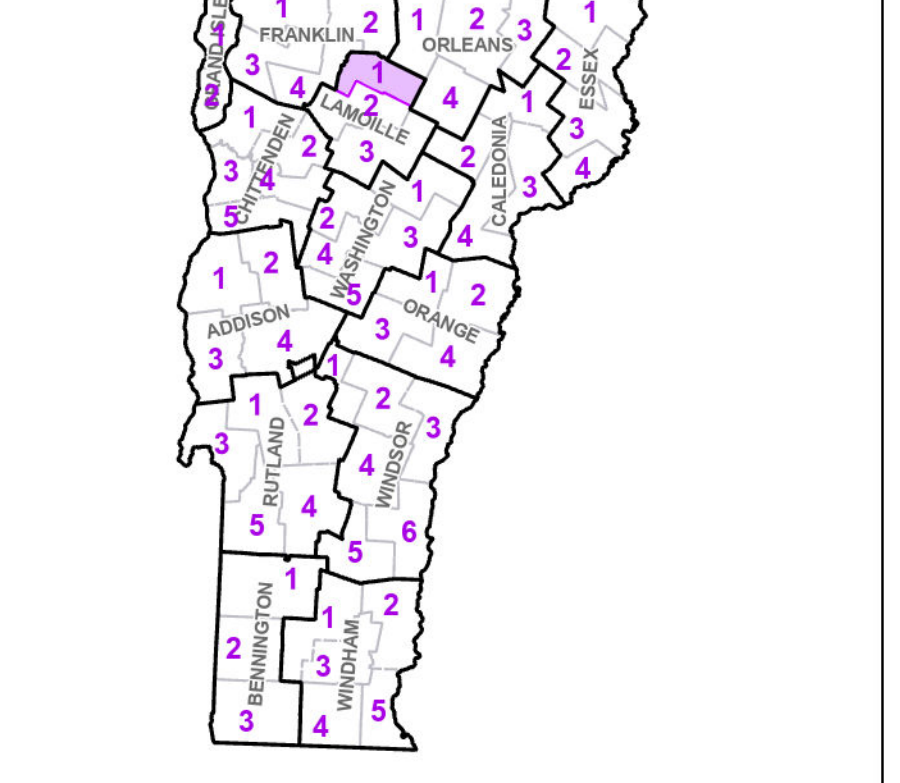
- Interstate
- U.S. Route
- Vermont Route
- Town Highway
- Interstate
- US Route Divided
- US Route
- State Route Paved
- State Route Unpaved
- Town Highway Paved
- Town Highway Unpaved
- Unimproved or Impossible
- Discontinued Highway
- Town Legal Trail
- Winter Road Closure
- Railroad
- Principal Arterial
- Minor Arterial
- Major Collector
- Minor Collector - Urban
- Minor Collector-Rural (not Federal Aid eligible)
- VTrans Maintenance District Office

**Emergency Response Site**

- Fire Station
- Law Enforcement
- Hospital
- Building
- Localities
- State Capital (Montpelier)
- Bridge or Culvert
- Water Body
- Stream or Brook
- Public Airport
- State Boundary
- County Boundary
- Town Boundary
- Village Boundary
- Urban Compact Boundary
- Public Land - State/Municipal
- Green Mountain National Forest
- County Subtle

**B20 / C20** State Bridge or Culvert Identifier  
**B20 / C20** Town Bridge or Culvert Identifier

Vermont State Plane Coordinate System  
 North American Datum of 1983  
 SPCS Zone Identifier: 4400  
 Geodetic Reference System 80  
 5,000-meter grid, Easting - Northing



**VERMONT COUNTY - TOWN MAP SERIES**  
**LAMOILLE COUNTY**  
**SHEET 1 OF 3**

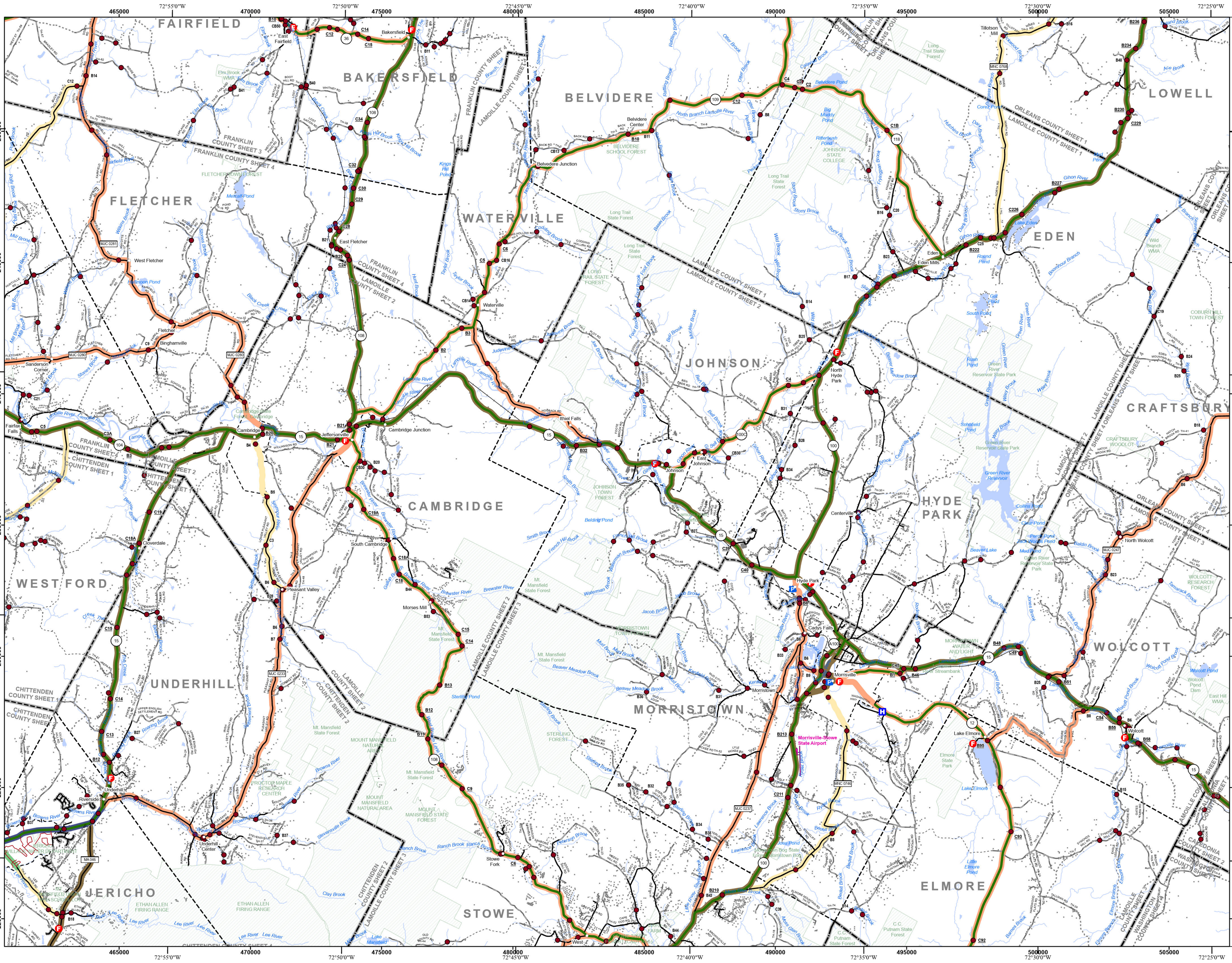
Prepared by the  
**Vermont Agency of Transportation**  
 Mapping Section  
 in cooperation with  
**U.S. Department of Transportation**  
 Federal Highway Administration  
 August 2024

Scale: 1:63,360 (printed size: 36 x 24 inches)

Contact information: Vermont Agency of Transportation  
 Division of Policy, Planning and Intermodal Development, Mapping Section  
 219 N. Main St., Barre, VT 05641  
 Telephone: 802-828-2600

This map was funded in part through grants from the Federal Highway Administration, U.S. Department of Transportation. The representation of the authors expressed herein do not necessarily state or reflect those of the U.S. Department of Transportation.



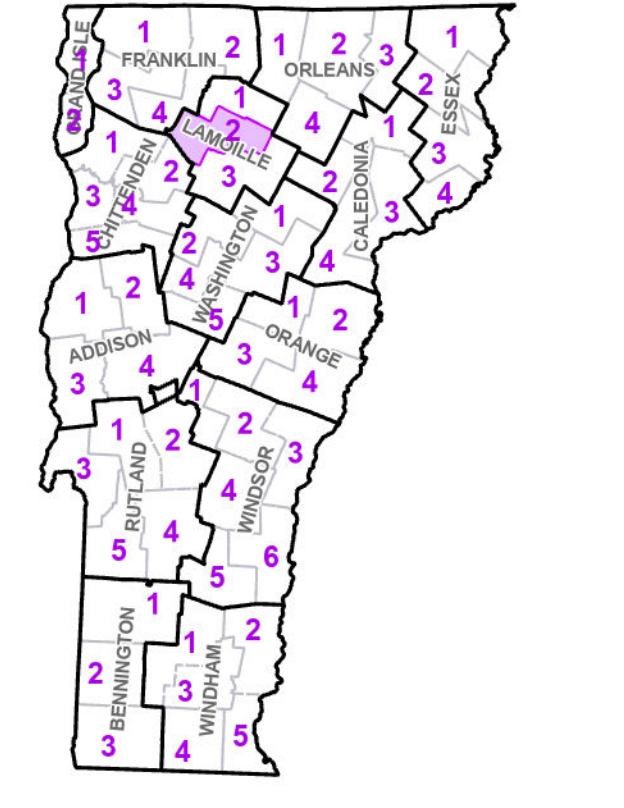


- Interstate
  - U.S. Route
  - Vermont Route
  - Town Highway
  - Interstate
  - US Route Divided
  - US Route
  - State Route Paved
  - State Route Unpaved
  - Town Highway Paved
  - Town Highway Unpaved
  - Unimproved or Impossible
  - Discontinued Highway
  - Town Legal Trail
  - Winter Road Closure
  - Railroad
  - Principal Arterial
  - Minor Arterial
  - Major Collector
  - Minor Collector - Urban
  - Minor Collector - Rural (not Federal Aid eligible)
  - VTrans Maintenance District Office
- Emergency Response Site**
- Fire Station
  - Law Enforcement
  - Hospital
  - Building
  - Localities
  - State Capital (Montpelier)
  - Localities
  - Bridge or Culvert
  - Water Body
  - Stream or Brook
  - Public Airport
  - State Boundary
  - County Boundary
  - Town Boundary
  - Village Boundary
  - Urban Compact Boundary
  - Public Land - State/Municipal
  - Green Mountain National Forest
  - County Subtle

TOWNSHIP
BELVIDERE
CAMBRIDGE
FAIRFAX
HYDE PARK
HYDE PARK VILLAGE
JEFFERSONVILLE VILLAGE
JOHNSON
JOHNSON VILLAGE
UNDERHILL

**B20 / C20** State Bridge or Culvert Identifier  
**B20 / C20** Town Bridge or Culvert Identifier

Vermont State Plane Coordinate System  
 North American Datum of 1983  
 SPCS Zone Identifier: 4400  
 Geodetic Reference System 80  
 5,000-meter grid, Easting - Northing



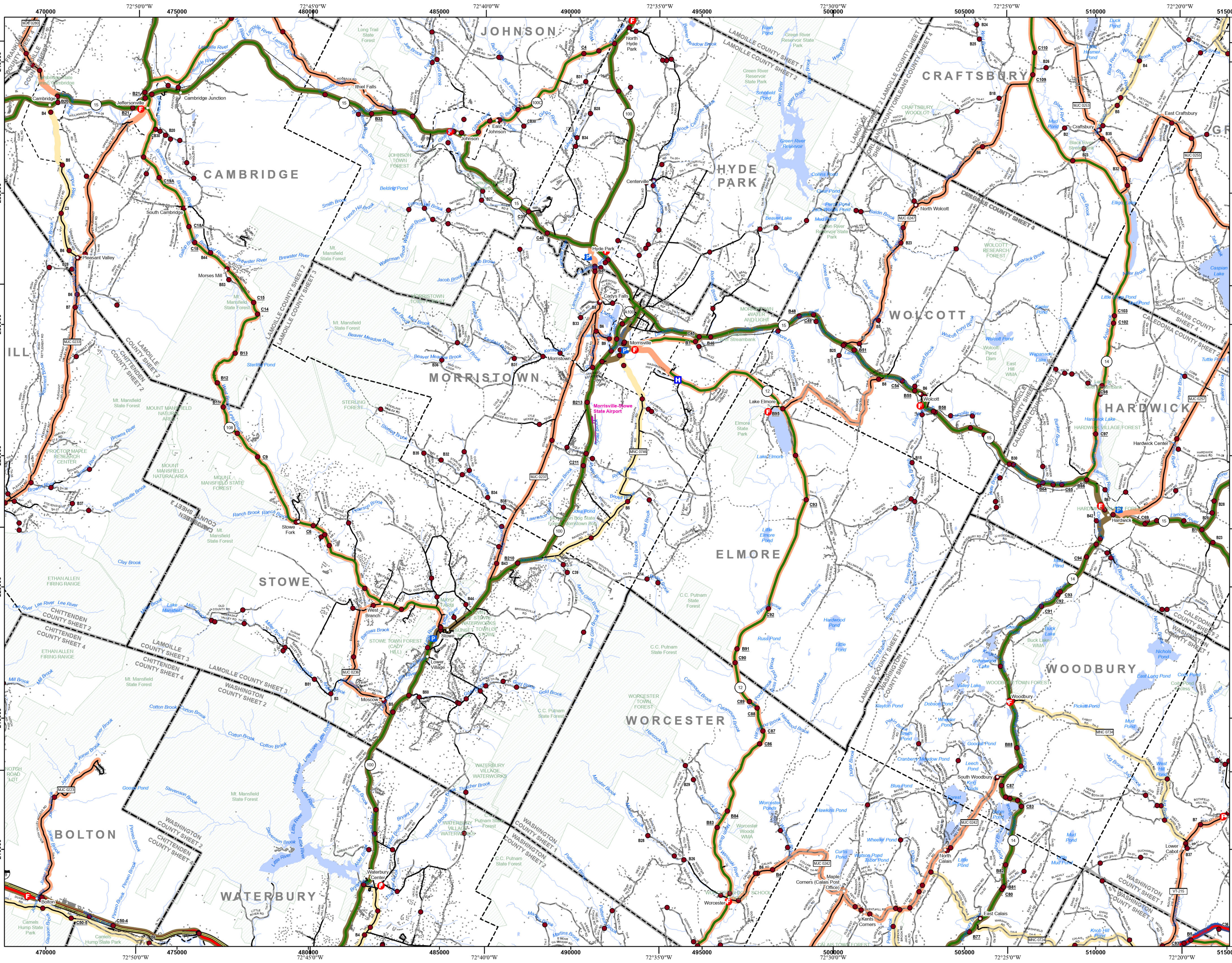
**VERMONT COUNTY - TOWN MAP SERIES**  
**LAMOILLE COUNTY SHEET 2 OF 3**

Prepared by the Vermont Agency of Transportation Mapping Section in cooperation with U.S. Department of Transportation Federal Highway Administration August 2024

Scale: 1:63,360 (printed size: 36 x 24 inches)

Contact information: Vermont Agency of Transportation  
 Division of Policy, Planning and Intermodal Development, Mapping Section  
 219 N. Main St., Barre, VT 05641  
 Telephone: 802-828-2600  
 This map was funded in part through grants from the Federal Highway Administration, U.S. Department of Transportation. The representation of the authors expressed herein do not necessarily state or reflect those of the U.S. Department of Transportation.





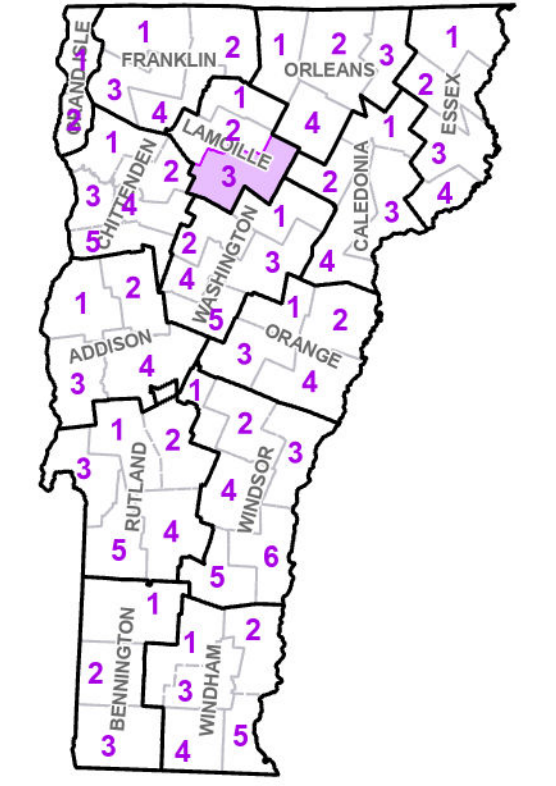
- Interstate
  - U.S. Route
  - Vermont Route
  - Town Highway
  - Interstate Divided
  - US Route Divided
  - US Route
  - State Route Paved
  - State Route Unpaved
  - Town Highway Paved
  - Town Highway Unpaved
  - Unimproved or Impossible
  - Discontinued Highway
  - Town Legal Trail
  - Winter Road Closure
  - Railroad
  - Principal Arterial
  - Minor Arterial
  - Major Collector
  - Minor Collector - Urban
  - Minor Collector - Rural (not Federal Aid eligible)
  - VTrans Maintenance District Office
- Emergency Response Site**
- Fire Station
  - Law Enforcement
  - Hospital
  - Building
  - State Capital (Montpelier)
  - Localities
  - Bridge or Culvert
  - Water Body
  - Stream or Brook
  - Public Airport
  - State Boundary
  - County Boundary
  - Town Boundary
  - Village Boundary
  - Urban Compact Boundary
  - Public Land - State/Municipal
  - Green Mountain National Forest
  - County Subtle

TOWNNAME
CRAFTSBURY
ELMORE
MORRISTOWN
MORRISVILLE VILLAGE
STOWE
WOLCOTT
WORCESTER

**B20 / C20** State Bridge or Culvert Identifier

**B20 / C20** Town Bridge or Culvert Identifier

Vermont State Plane Coordinate System  
 North American Datum of 1983  
 SPCS Zone Identifier: 4400  
 Geodetic Reference System 80  
 5,000-meter grid, Easting - Northing



**VERMONT COUNTY - TOWN MAP SERIES**  
**LAMOILLE COUNTY SHEET 3 OF 3**

Prepared by the Vermont Agency of Transportation Mapping Section in cooperation with U.S. Department of Transportation Federal Highway Administration August 2024

Scale: 1:63,360 (printed size: 36 x 24 inches)

Contact information: Vermont Agency of Transportation  
 Division of Policy, Planning and Intermodal Development, Mapping Section  
 219 N. Main St., Barre, VT 05641  
 Telephone: 802-828-2600

This map was funded in part through grants from the Federal Highway Administration, U.S. Department of Transportation. The representation of the authors expressed herein do not necessarily state or reflect those of the U.S. Department of Transportation.