

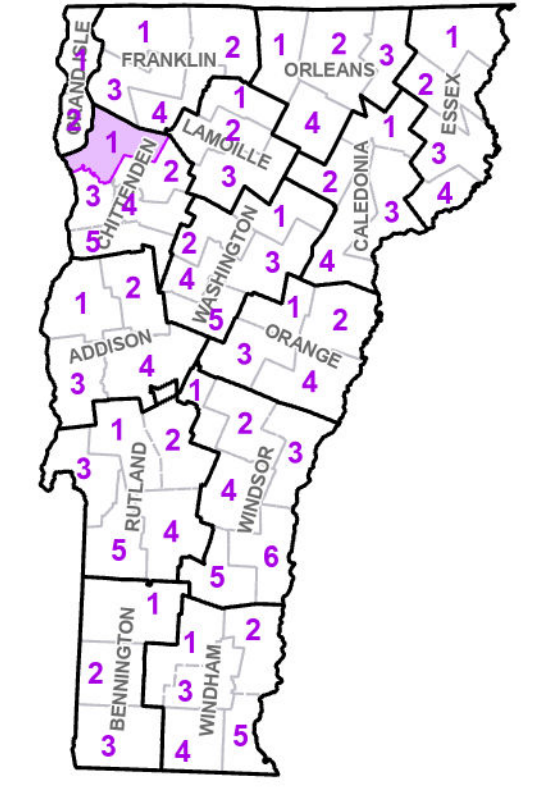
- Interstate
- U.S. Route
- Vermont Route
- Town Highway
- Interstate
- US Route Divided
- US Route
- State Route Paved
- State Route Unpaved
- Town Highway Paved
- Town Highway Unpaved
- Unimproved or Impossible
- Discontinued Highway
- Town Legal Trail
- Winter Road Closure
- Railroad
- Principal Arterial
- Minor Arterial
- Major Collector
- Minor Collector - Urban
- Minor Collector - Rural (not Federal Aid eligible)
- Federal Aid eligible
- VTrans Maintenance District Office

TOWNNAME
COLCHESTER
FAIRFAX
GRAND ISLE
MILTON
MILTON URBAN COMPACT
SOUTH HERO
UNDERHILL
WESTFORD
WINOOSKI

- Emergency Response Site**
- Fire Station
- Law Enforcement
- Hospital
- Building
- State Capital (Montpelier)
- Localities
- Bridge or Culvert
- Water Body
- Stream or Brook
- Public Airport
- State Boundary
- County Boundary
- Town Boundary
- Village Boundary
- Urban Compact Boundary
- Public Land - State/Municipal
- Green Mountain National Forest
- County Subtle

B20 / C20 State Bridge or Culvert Identifier
B20 / C20 Town Bridge or Culvert Identifier

Vermont State Plane Coordinate System
 North American Datum of 1983
 SPCS Zone Identifier: 4400
 Geodetic Reference System 80
 5,000-meter grid, Easting - Northing

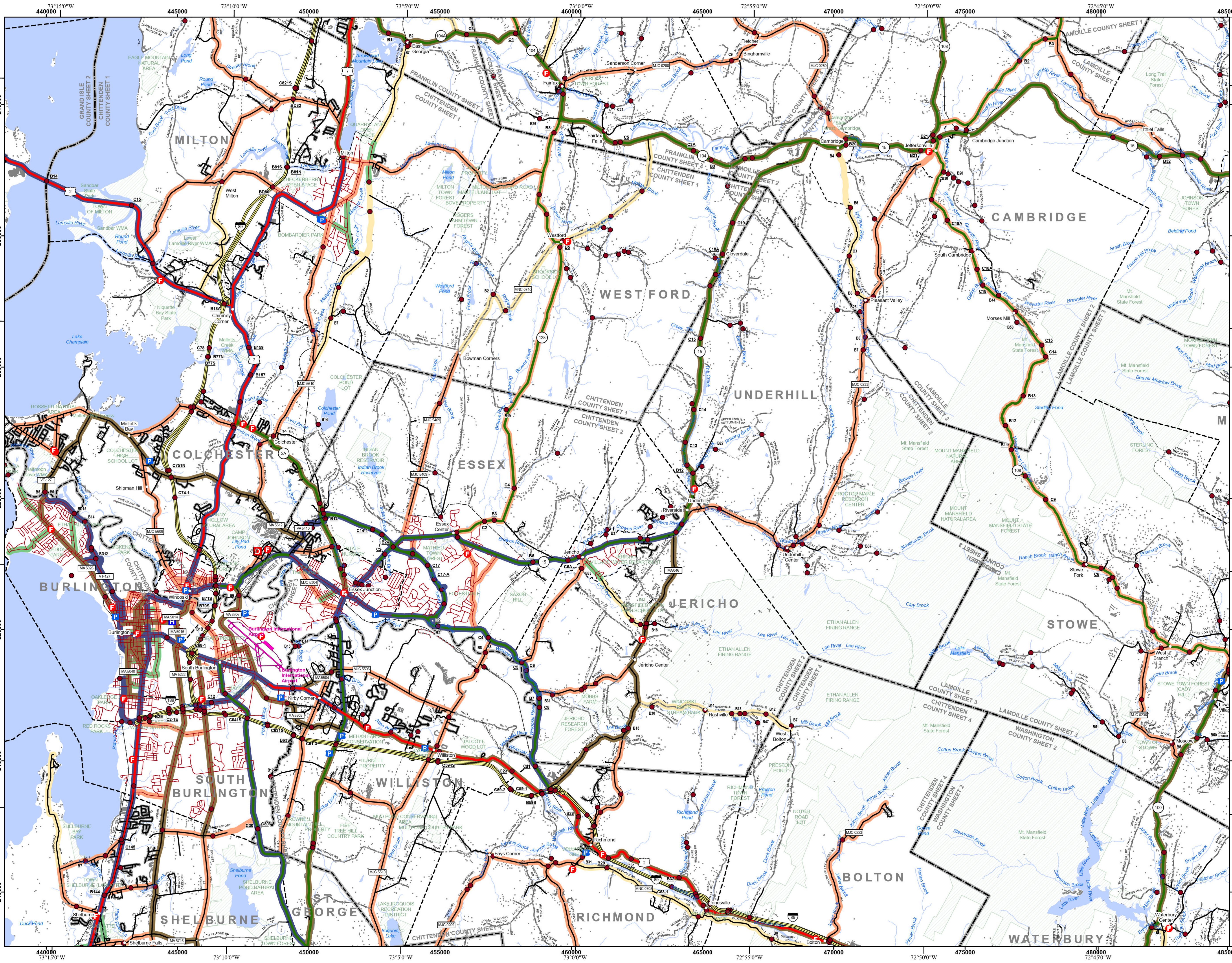


VERMONT COUNTY - TOWN MAP SERIES
CHITTENDEN COUNTY
SHEET 1 OF 5

Prepared by the
 Vermont Agency of Transportation
 Mapping Section
 in cooperation with
 U.S. Department of Transportation
 Federal Highway Administration
 August 2024

0 1 2 Miles
 Scale: 1:63,360 (printed size: 36 x 24 inches)

Contact information: Vermont Agency of Transportation
 Division of Policy, Planning and Intermodal Development, Mapping Section
 219 N. Main St., Barre, VT 05641
 Telephone: 802-828-2600
 This map was funded in part through grants from the Federal Highway Administration, U.S. Department of Transportation. The representation of the authors expressed herein do not necessarily state or reflect those of the U.S. Department of Transportation.



TOWNSHIP	
ESSEX	
ESSEX CENTER URBAN COMPACT	
ESSEX JUNCTION	
JERICHO	
JERICHO VILLAGE	
RICHMOND	
UNDERHILL	
WESTFORD	

- Interstate
- U.S. Route
- Vermont Route
- Town Highway
- Interstate
- US Route Divided
- US Route
- State Route Paved
- State Route Unpaved
- Town Highway Paved
- Town Highway Unpaved
- Unimproved or Impossible
- Discontinued Highway
- Town Legal Trail
- Winter Road Closure
- Railroad
- Principal Arterial
- Minor Arterial
- Major Collector
- Minor Collector - Urban
- Minor Collector-Rural (not Federal Aid eligible)
- VTrans Maintenance District Office

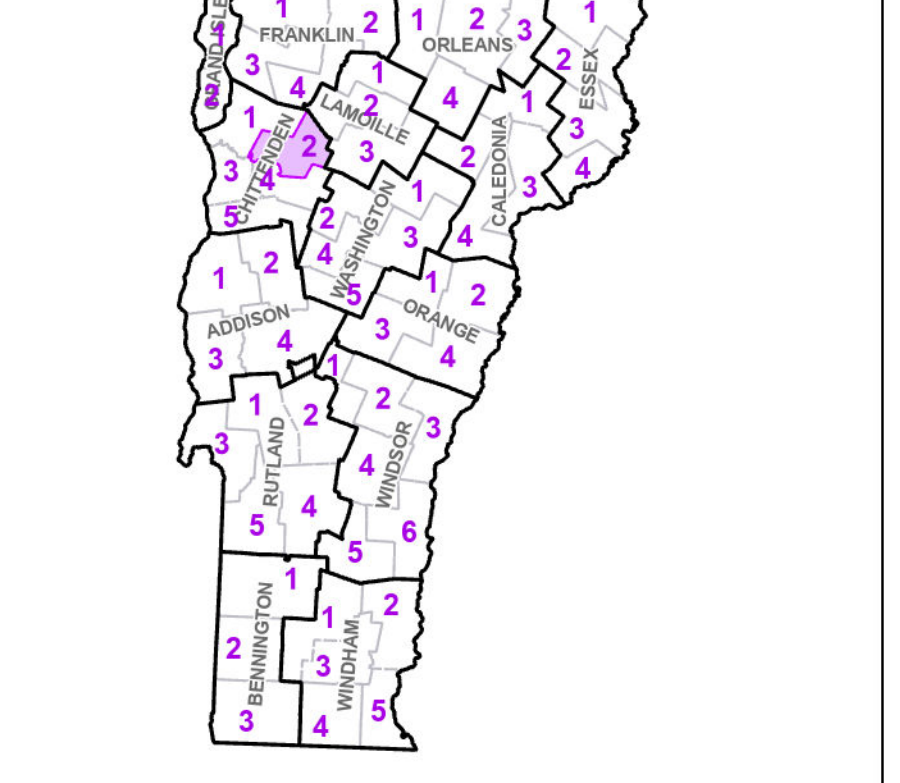
Emergency Response Site

- Fire Station
- Law Enforcement
- Hospital
- Building
- State Capital (Montpelier)
- Localities
- Bridge or Culvert
- Water Body
- Stream or Brook
- Public Airport
- State Boundary
- County Boundary
- Town Boundary
- Village Boundary
- Urban Compact Boundary
- Public Land - State/Municipal
- Green Mountain National Forest
- County Subtle

B20 / C20 State Bridge or Culvert Identifier

B20 / C20 Town Bridge or Culvert Identifier

Vermont State Plane Coordinate System
 North American Datum of 1983
 SPCS Zone Identifier: 4400
 Geodetic Reference System 80
 5,000-meter grid, Easting - Northing



VERMONT COUNTY - TOWN MAP SERIES
CHITTENDEN COUNTY
SHEET 2 OF 5

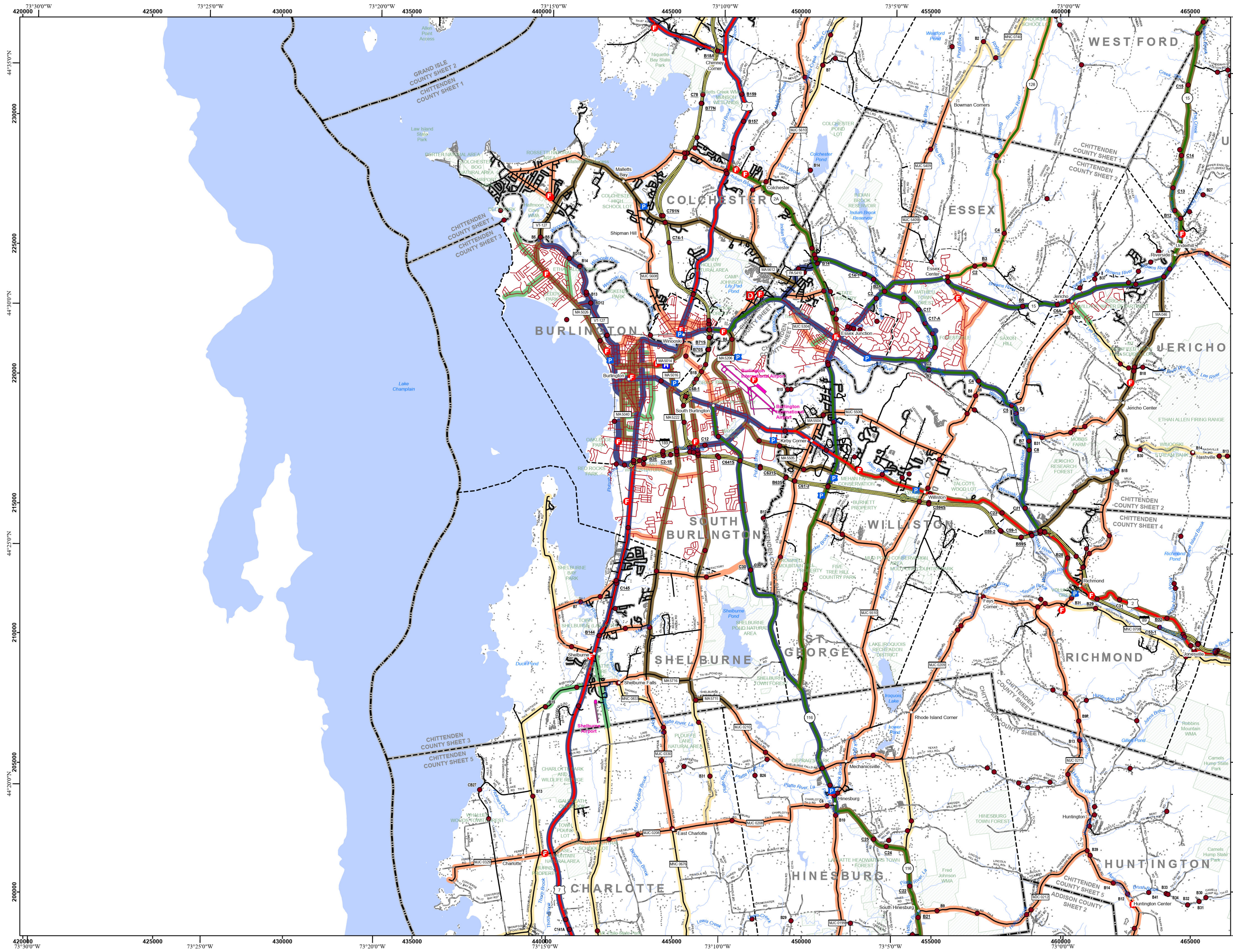
Prepared by the
 Vermont Agency of Transportation
 Mapping Section
 in cooperation with
 U.S. Department of Transportation
 Federal Highway Administration
 August 2024

0 1 2 Miles

Scale: 1:63,360 (printed size: 36 x 24 inches)

Contact information: Vermont Agency of Transportation
 Division of Policy, Planning and Intermodal Development, Mapping Section
 219 N. Main St., Barre, VT 05641
 Telephone: 802-828-2600

This map was funded in part through grants from the Federal Highway Administration, U.S. Department of Transportation. The representation of the authors expressed herein do not necessarily state or reflect those of the U.S. Department of Transportation.

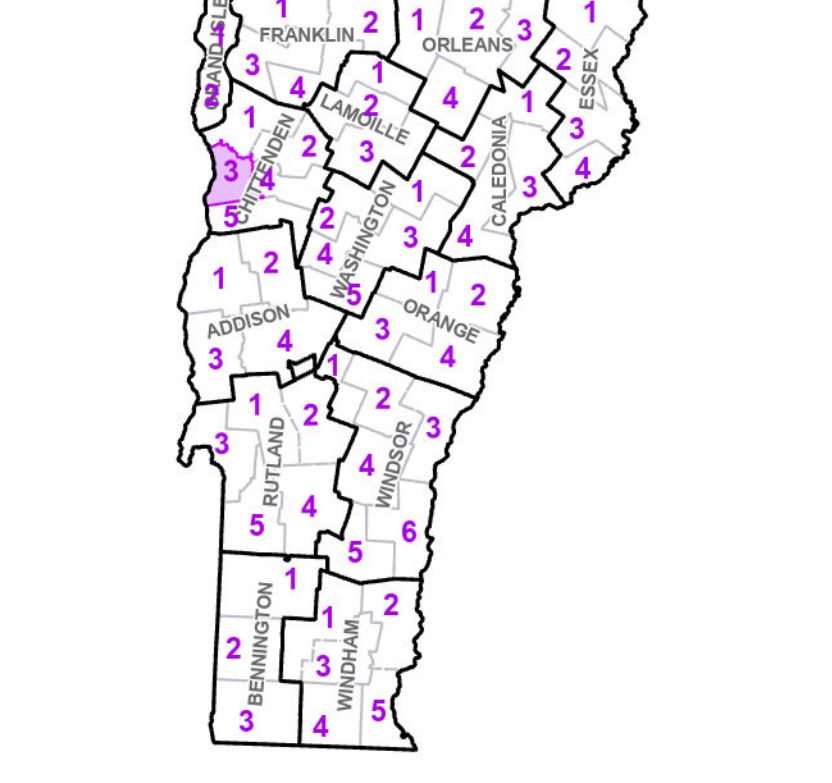


- Interstate
- U.S. Route
- Vermont Route
- Town Highway
- Interstate
- US Route Divided
- US Route
- State Route Paved
- State Route Unpaved
- Town Highway Paved
- Town Highway Unpaved
- Unimproved or Impossible
- Discontinued Highway
- Town Legal Trail
- Winter Road Closure
- Railroad
- Principal Arterial
- Minor Arterial
- Major Collector
- Minor Collector - Urban
- Minor Collector - Rural (not Federal Aid eligible)
- VTrans Maintenance District Office

TOWNSHIP
BURLINGTON
COLCHESTER
SAINT GEORGE
SHELBURNE
SOUTH BURLINGTON

- Emergency Response Site
- Fire Station
- Law Enforcement
- Hospital
- Building
- State Capital (Montpelier)
- Localities
- Bridge or Culvert
- Water Body
- Stream or Brook
- Public Airport
- State Boundary
- County Boundary
- Town Boundary
- Village Boundary
- Urban Compact Boundary
- Public Land - State/Municipal
- Green Mountain National Forest
- County Subtle

B20 / C20 State Bridge or Culvert Identifier
 B20 / C20 Town Bridge or Culvert Identifier



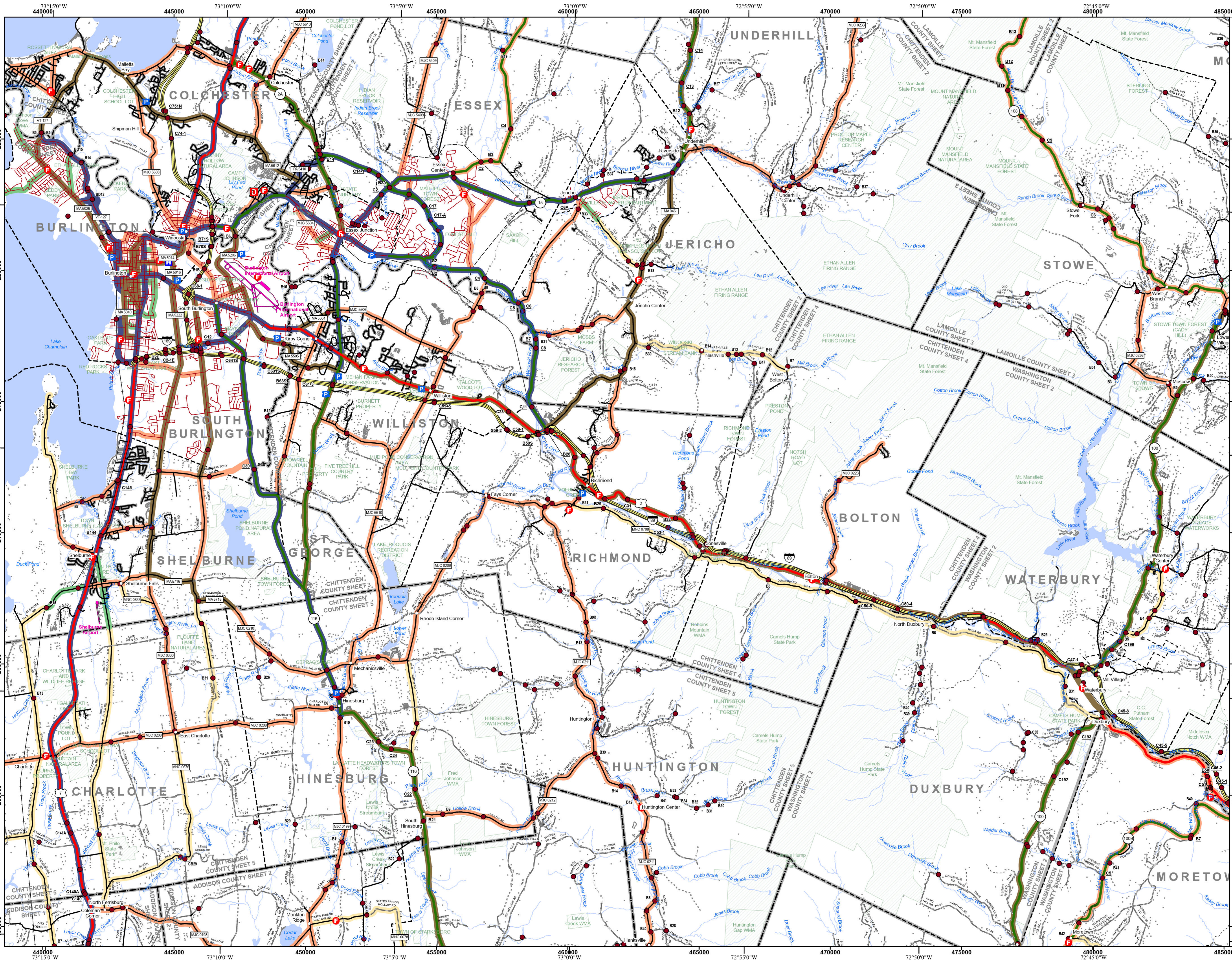
VERMONT COUNTY - TOWN MAP SERIES
CHITTENDEN COUNTY SHEET 3 OF 5

Prepared by the Vermont Agency of Transportation Mapping Section in cooperation with U.S. Department of Transportation Federal Highway Administration August 2024

Scale: 1:63,360 (printed size: 36 x 24 inches)

Contact information: Vermont Agency of Transportation Division of Policy, Planning and Intermodal Development, Mapping Section 219 N. Main St., Barre, VT 05641 Telephone: 802-828-2600

This map was funded in part through grants from the Federal Highway Administration, U.S. Department of Transportation. The representation of the authors expressed herein do not necessarily state or reflect those of the U.S. Department of Transportation.

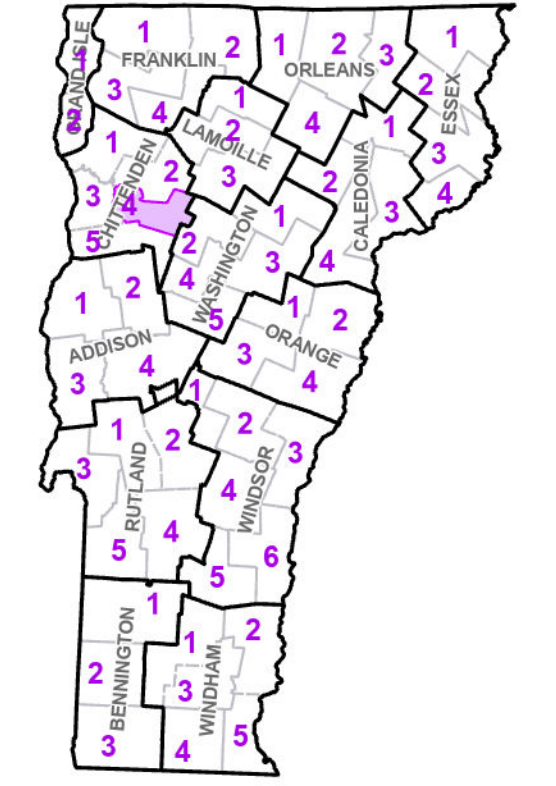


- Interstate
 - U.S. Route
 - Vermont Route
 - Town Highway
 - Interstate
 - US Route Divided
 - US Route
 - State Route Paved
 - State Route Unpaved
 - Town Highway Paved
 - Town Highway Unpaved
 - Unimproved or Impossible
 - Discontinued Highway
 - Town Legal Trail
 - Winter Road Closure
 - Railroad
 - Principal Arterial
 - Minor Arterial
 - Major Collector
 - Minor Collector - Urban
 - Minor Collector - Rural (not Federal Aid eligible)
 - VTrans Maintenance District Office
- Emergency Response Site**
- Fire Station
 - Law Enforcement
 - Hospital
 - Building
 - State Capital (Montpelier)
 - Localities
 - Bridge or Culvert
 - Water Body
 - Stream or Brook
 - Public Airport
 - State Boundary
 - County Boundary
 - Town Boundary
 - Village Boundary
 - Urban Compact Boundary
 - Public Land - State/Municipal
 - Green Mountain National Forest
 - County Subtle

TOWNSHIP
BOLTON
JERICHO
RICHMOND
WATERBURY
WILLISTON

B20 / C20 State Bridge or Culvert Identifier
B20 / C20 Town Bridge or Culvert Identifier

Vermont State Plane Coordinate System
 North American Datum of 1983
 SPCS Zone Identifier: 4400
 Geodetic Reference System 80
 5,000-meter grid, Easting - Northing



VERMONT COUNTY - TOWN MAP SERIES
CHITTENDEN COUNTY SHEET 4 OF 5

Prepared by the Vermont Agency of Transportation Mapping Section in cooperation with U.S. Department of Transportation Federal Highway Administration August 2024

Scale: 1:63,360 (printed size: 36 x 24 inches)

Contact information: Vermont Agency of Transportation Division of Policy, Planning and Intermodal Development, Mapping Section 219 N. Main St., Barre, VT 05641 Telephone: 802-828-2600

This map was funded in part through grants from the Federal Highway Administration, U.S. Department of Transportation. The representation of the authors expressed herein is not necessarily state or reflect those of the U.S. Department of Transportation.



TOWNNAME	
BUELS GORE	
CHARLOTTE	
HINESBURG	
HUNTINGTON	
SHELburne	

- Interstate
- U.S. Route
- Vermont Route
- Town Highway
- Interstate
- US Route Divided
- US Route
- State Route Paved
- State Route Unpaved
- Town Highway Paved
- Town Highway Unpaved
- Unimproved or Impossible
- Discontinued Highway
- Town Legal Trail
- Winter Road Closure
- Railroad
- Principal Arterial
- Minor Arterial
- Major Collector
- Minor Collector - Urban
- Minor Collector-Rural (not Federal Aid eligible)
- VTrans Maintenance District Office

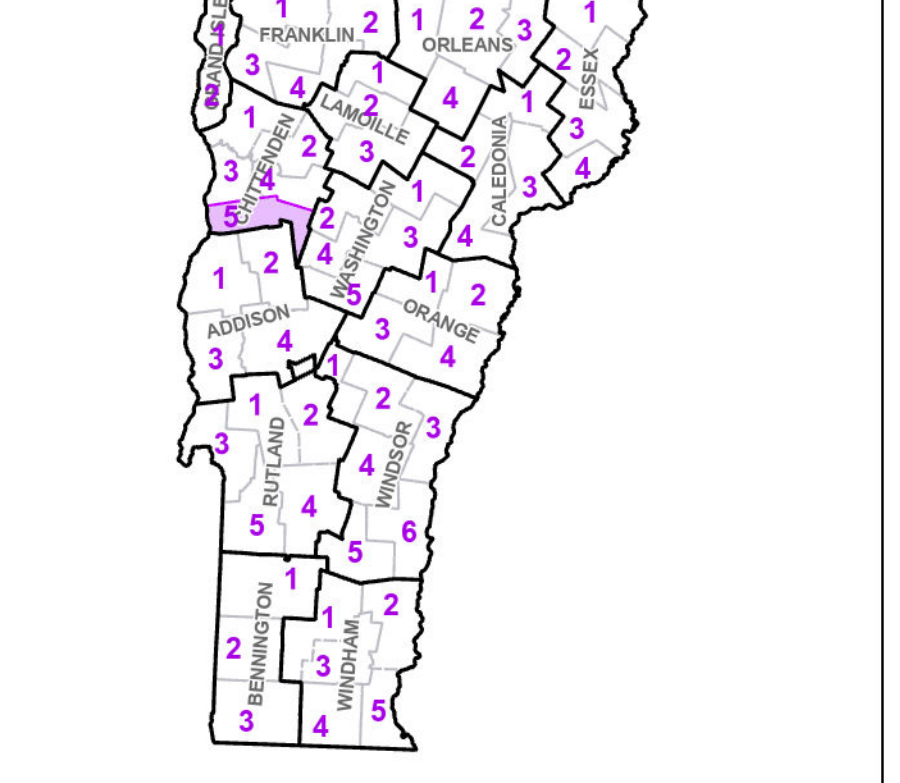
Emergency Response Site

- Fire Station
- Law Enforcement
- Hospital
- Building
- State Capital (Montpelier)
- Localities
- Bridge or Culvert
- Water Body
- Stream or Brook
- Public Airport
- State Boundary
- County Boundary
- Town Boundary
- Village Boundary
- Urban Compact Boundary
- Public Land - State/Municipal
- Green Mountain National Forest
- County Subtle

B20 / C20 State Bridge or Culvert Identifier

B20 / C20 Town Bridge or Culvert Identifier

Vermont State Plane Coordinate System
 North American Datum of 1983
 SPCS Zone Identifier: 4400
 Geodetic Reference System 80
 5,000-meter grid, Easting - Northing



**VERMONT
 COUNTY - TOWN MAP SERIES
 CHITTENDEN COUNTY
 SHEET 5 OF 5**

Prepared by the
**Vermont Agency of Transportation
 Mapping Section**
 in cooperation with
**U.S. Department of Transportation
 Federal Highway Administration**
 August 2024

Scale: 1:63,360 (printed size: 36 x 24 inches)

Contact information: Vermont Agency of Transportation
 Division of Policy, Planning and Intermodal Development, Mapping Section
 219 N. Main St., Barre, VT 05641
 Telephone: 802-828-2600

This map was funded in part through grants from the Federal Highway Administration, U.S. Department of Transportation. The representation of the authors expressed herein do not necessarily state or reflect those of the U.S. Department of Transportation.