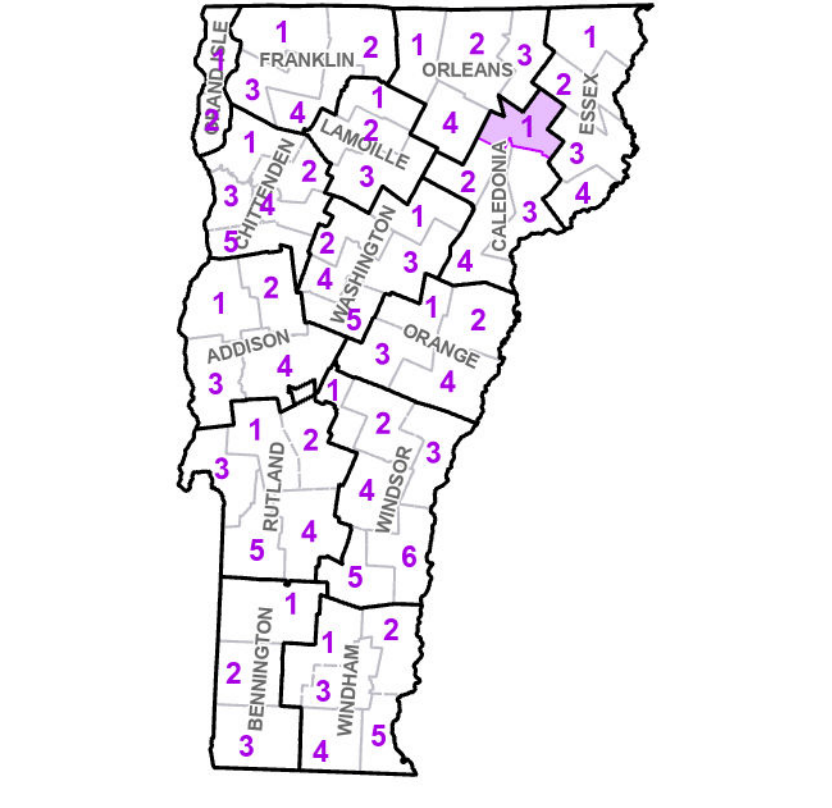


- Interstate
- U.S. Route
- Vermont Route
- Town Highway
- Interstate
- US Route Divided
- US Route
- State Route Paved
- State Route Unpaved
- Town Highway Paved
- Town Highway Unpaved
- Unimproved or Impossible
- Discontinued Highway
- Town Legal Trail
- Winter Road Closure
- Railroad
- Principal Arterial
- Minor Arterial
- Major Collector
- Minor Collector - Urban
- Minor Collector - Rural (not Federal Aid eligible)
- VTrans Maintenance District Office

- Emergency Response Site**
- Fire Station
 - Law Enforcement
 - Hospital
 - Building
 - State Capital (Montpelier)
 - Localities
 - Bridge or Culvert
 - Water Body
 - Stream or Brook
 - Public Airport
 - State Boundary
 - County Boundary
 - Town Boundary
 - Village Boundary
 - Urban Compact Boundary
 - Public Land - State/Municipal
 - Green Mountain National Forest
 - County Subtle

B20 / C20 State Bridge or Culvert Identifier
 B20 / C20 Town Bridge or Culvert Identifier



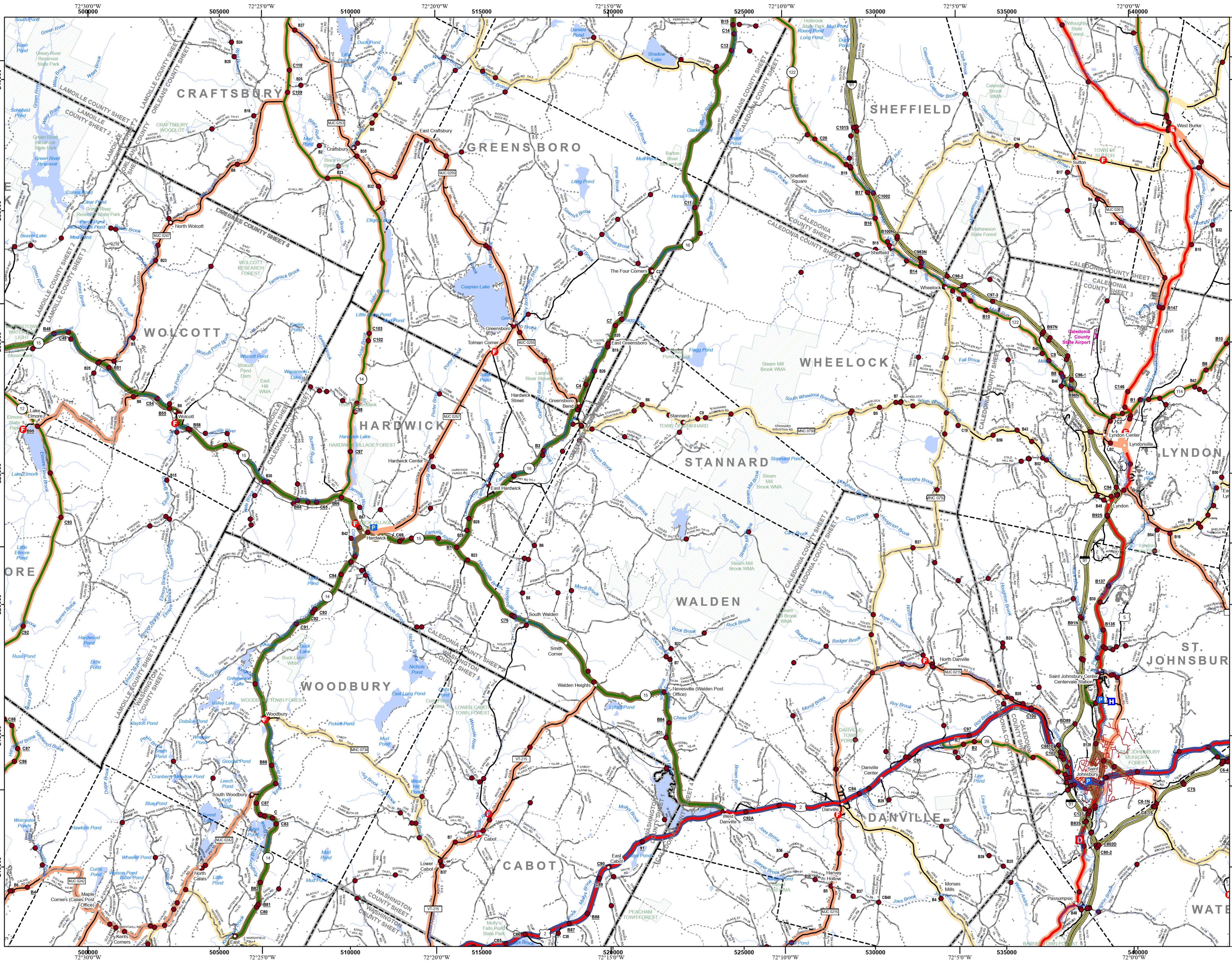
VERMONT COUNTY - TOWN MAP SERIES
CALEDONIA COUNTY SHEET 1 OF 4

Prepared by the Vermont Agency of Transportation Mapping Section in cooperation with U.S. Department of Transportation Federal Highway Administration August 2024

Scale: 1:63,360 (printed size: 36 x 24 inches)

Contact information: Vermont Agency of Transportation Division of Policy, Planning and Intermodal Development, Mapping Section 219 N. Main St., Barre, VT 05641 Telephone: 802-828-2600

This map was funded in part through grants from the Federal Highway Administration, U.S. Department of Transportation. The representation of the authors expressed herein do not necessarily state or reflect those of the U.S. Department of Transportation.

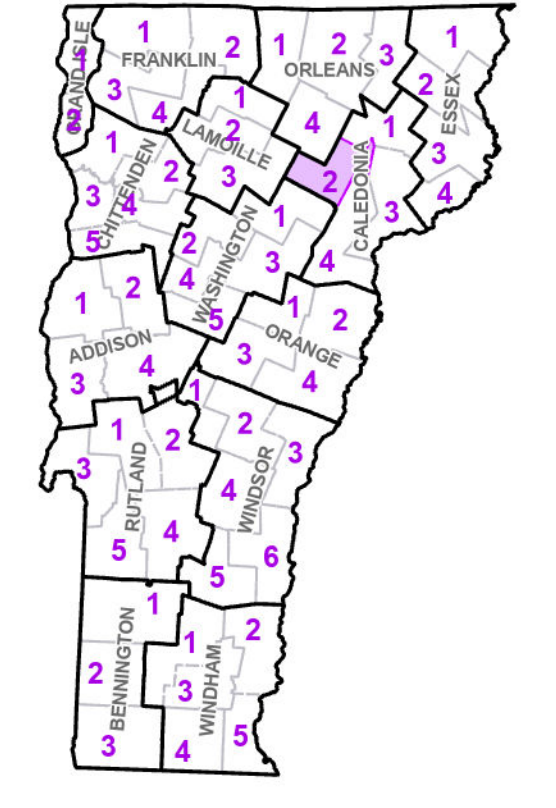


- Interstate
 - U.S. Route
 - Vermont Route
 - Town Highway
 - Interstate Divided
 - US Route Divided
 - US Route
 - State Route Paved
 - State Route Unpaved
 - Town Highway Paved
 - Town Highway Unpaved
 - Unimproved or Impossible
 - Discontinued Highway
 - Town Legal Trail
 - Winter Road Closure
 - Railroad
 - Principal Arterial
 - Minor Arterial
 - Major Collector
 - Minor Collector - Urban
 - Minor Collector - Rural (not Federal Aid eligible)
 - VTrans Maintenance District Office
- Emergency Response Site**
- Fire Station
 - Law Enforcement
 - Hospital
 - Building
 - Localities
 - State Capital (Montpelier)
 - Bridge or Culvert
 - Water Body
 - Stream or Brook
 - Public Airport
 - State Boundary
 - County Boundary
 - Town Boundary
 - Village Boundary
 - Urban Compact Boundary
 - Public Land - State/Municipal
 - Green Mountain National Forest
 - County Subtle

TOWNNAME
CABOT
DANVILLE
HARDWICK
HARDWICK URBAN COMPACT
STANNARD
WALDEN
WHEELOCK

B20 / C20 State Bridge or Culvert Identifier
B20 / C20 Town Bridge or Culvert Identifier

Vermont State Plane Coordinate System
 North American Datum of 1983
 SPCS Zone Identifier: 4400
 Geodetic Reference System 80
 5,000-meter grid, Easting - Northing

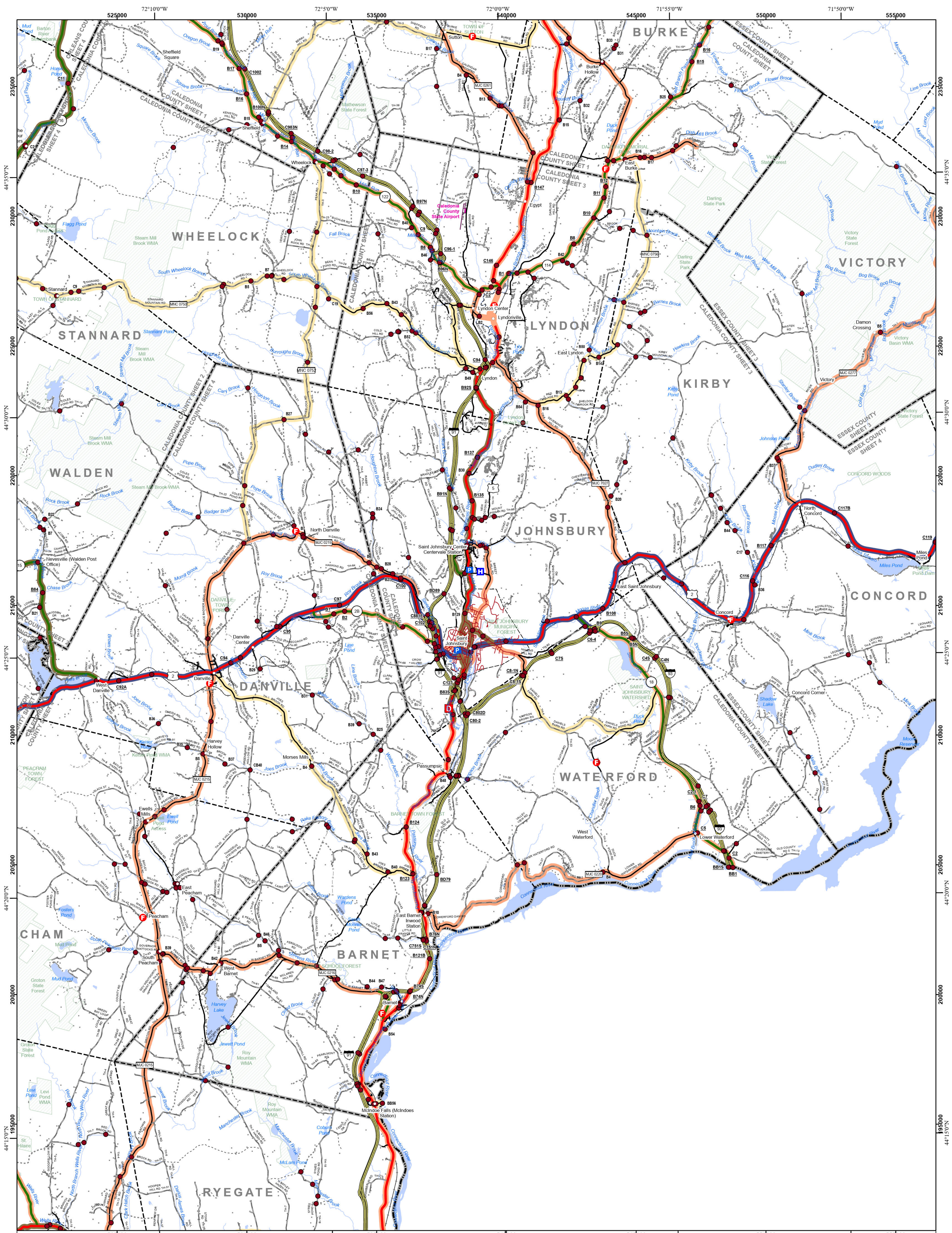


VERMONT COUNTY - TOWN MAP SERIES
CALEDONIA COUNTY
SHEET 2 OF 4

Prepared by the
 Vermont Agency of Transportation
 Mapping Section
 in cooperation with
 U.S. Department of Transportation
 Federal Highway Administration
 August 2024

Scale: 1:63,360 (printed size: 36 x 24 inches)

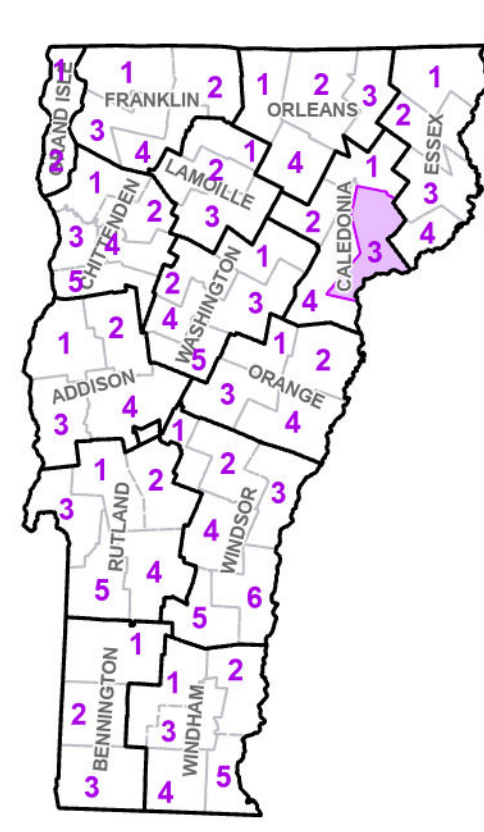
Contact information: Vermont Agency of Transportation
 Division of Policy, Planning and Intermodal Development, Mapping Section
 219 N. Main St., Barre, VT 05641
 Telephone: 802-828-2600
 This map was funded in part through grants from the Federal Highway Administration, U.S. Department of Transportation. The representation of the authors expressed herein do not necessarily state or reflect those of the U.S. Department of Transportation.



- Interstate
- U.S. Route
- Vermont Route
- Town Highway
- Interstate
- US Route Divided
- US Route
- State Route Paved
- State Route Unpaved
- Town Highway Paved
- Town Highway Unpaved
- Unimproved or Impossible
- Discontinued Highway
- Town Legal Trail
- Winter Road Closure
- Railroad
- Federal Aid Route
 - Principal Arterial
 - Minor Arterial
 - Major Collector
 - Minor Collector - Urban
 - Minor Collector-Rural (not Federal Aid eligible)
 - VTrans Maintenance District Office
- Emergency Response Site
 - Fire Station
 - Law Enforcement
 - Hospital
 - Building
- State Capital (Montpelier)
- Localities
- Bridge or Culvert
- Water Body
- Stream or Brook
- Public Airport
- Political Boundary**
 - State Boundary
 - County Boundary
 - Town Boundary
 - Village Boundary
 - Urban Compact Boundary
 - Public Land - State/Municipal
 - Green Mountain National Forest
 - County Subtle

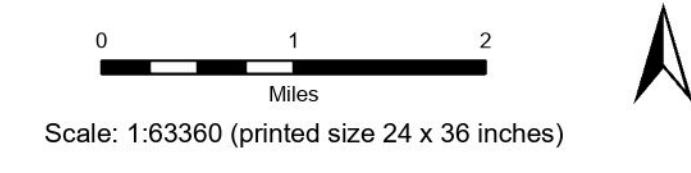
TOWN	TOWN
BARNET	LYNDON URBAN COMPACT
BURKE	PEACHAM
CABOT	RYEGATE
CONCORD	SAINT JOHNSBURY
DANVILLE	SAINT JOHNSBURY URBAN COMPACT
EAST HAVEN	SHEFFIELD
GLOVER	STANNARD
GRANBY	SUTTON
GREENSBORO	VICTORY
GROTON	WALDEN
GROTON VILLAGE	WATERFORD
KIRBY	WEST BURKE VILLAGE
LUNENBURG	WHELOCK
LYNDON	

Vermont State Plane Coordinate System
 North American Datum of 1983
 SPCS Zone Identifier: 4400
 Geoidic Reference System 80
 5,000-meter grid, Easting - Northing

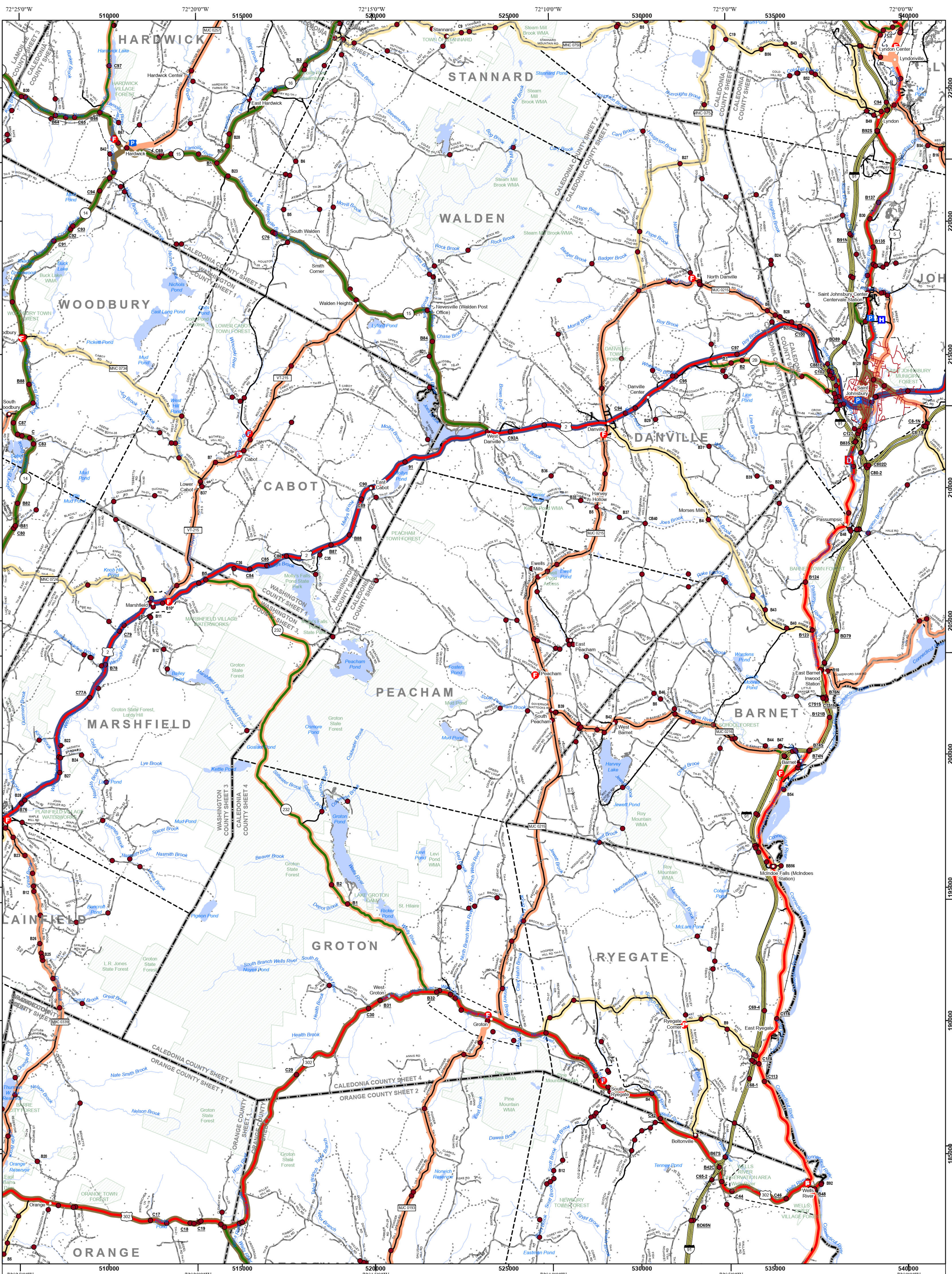


**VERMONT
 COUNTY - TOWN MAP SERIES
 CALEDONIA COUNTY
 SHEET 3 OF 4**

Prepared by the
 Vermont Agency of Transportation
 Mapping Section
 in cooperation with
 U.S. Department of Transportation
 Federal Highway Administration
 August 2024



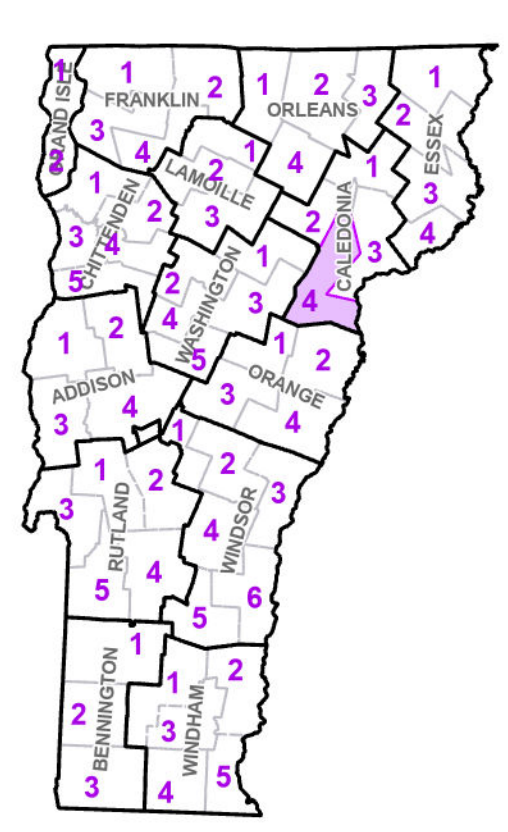
This map was funded in part through grants from the Federal Highway Administration, U.S. Department of Transportation. The representation of the authors expressed herein do not necessarily state or reflect those of the U. S. Department of Transportation.



- Interstate
 - U.S. Route
 - Vermont Route
 - Town Highway
 - Interstate
 - US Route Divided
 - US Route
 - State Route Paved
 - State Route Unpaved
 - Town Highway Paved
 - Town Highway Unpaved
 - Unimproved or Impassible
 - Discontinued Highway
 - Town Legal Trail
- Winter Road Closure
 - Railroad
 - Federal Aid Route
 - Principal Arterial
 - Minor Arterial
 - Major Collector
 - Minor Collector - Urban
 - Minor Collector-Rural (not Federal Aid eligible)
 - VTrans Maintenance District Office
 - Fire Station
 - Law Enforcement
 - Hospital
 - Building
- State Capital (Montpelier)
 - Localities
 - Bridge or Culvert
 - Water Body
 - Stream or Brook
 - Public Airport
- Political Boundary**
 - State Boundary
 - County Boundary
 - Town Boundary
 - Village Boundary
 - Urban Compact Boundary
 - Public Land - State/Municipal
 - Green Mountain National Forest
 - County Subtle

TOWN	TOWN
BARNET	NEWBURY
BARRE TOWN	ORANGE
CABOT	PEACHAM
CALAIS	PLAINFIELD
DANVILLE	RYEGATE
GREENSBORO	SAINT JOHNSBURY
GROTON	SAINT JOHNSBURY URBAN COMPACT
GROTON VILLAGE	SOUTH RYEGATE VILLAGE
STANNARD	TOPSHAM
HARDWICK URBAN COMPACT	WALDEN
LYNDON	WATERFORD
MARSHFIELD	WELLS RIVER VILLAGE
MARSHFIELD VILLAGE	WHELOCK

Vermont State Plane Coordinate System
 North American Datum of 1983
 SPCS Zone Identifier: 4400
 Geoidic Reference System 80
 5,000-meter grid, Easting - Northing



VERMONT COUNTY - TOWN MAP SERIES
CALEDONIA COUNTY
SHEET 4 OF 4

Prepared by the
 Vermont Agency of Transportation
 Mapping Section
 in cooperation with
 U.S. Department of Transportation
 Federal Highway Administration
 August 2024

0 1 2
 Miles

Scale: 1:63360 (printed size 24 x 36 inches)

Contact Information: Vermont Agency of Transportation
 Division of Policy, Planning and Intermodal Development, Mapping Section
 219 N. Main St., Barre, VT 05641, Telephone: 802-828-2600

This map was funded in part through grants from the Federal Highway Administration, U.S. Department of Transportation. The representation of the authors expressed herein do not necessarily state or reflect those of the U. S. Department of Transportation.