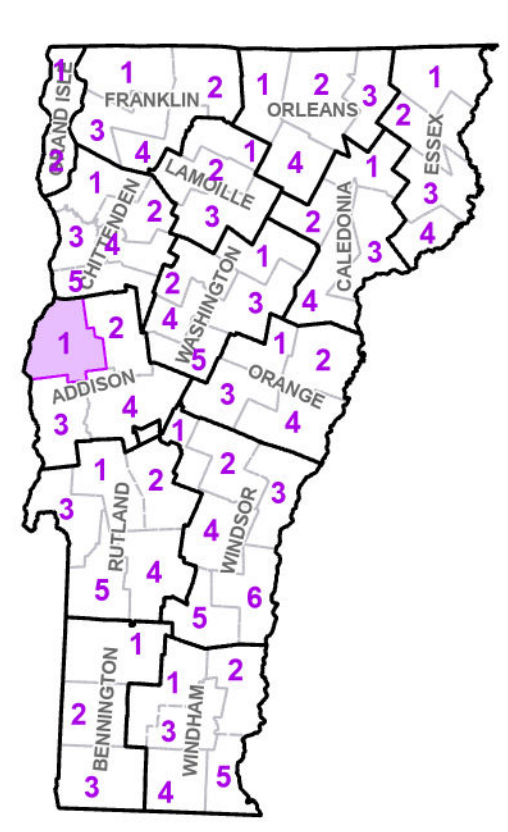




- Interstate
- U.S. Route
- Vermont Route
- Town Highway
- Interstate
- US Route Divided
- US Route
- State Route Paved
- State Route Unpaved
- Town Highway Paved
- Town Highway Unpaved
- Unimproved or Impossible
- Discontinued Highway
- Town Legal Trail
- Winter Road Closure
- Railroad
- Federal Aid Route
- Principal Arterial
- Minor Arterial
- Major Collector
- Minor Collector - Urban
- Minor Collector-Rural (not Federal Aid eligible)
- VTrans Maintenance District Office
- Fire Station
- Law Enforcement
- Hospital
- Building
- State Capital (Montpelier)
- Localities
- Bridge or Culvert
- Water Body
- Stream or Brook
- Public Airport
- Political Boundary**
- State Boundary
- County Boundary
- Town Boundary
- Village Boundary
- Urban Compact Boundary
- Public Land - State/Municipal
- Green Mountain National Forest
- County Subtle

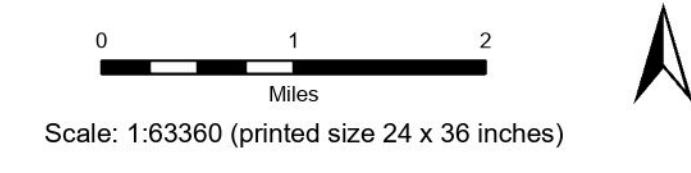
TOWN	TOWN
ADDISON	NEW HAVEN
BRIDPORT	PANTON
BRISTOL	RIPTON
BRISTOL URBAN COMPACT	SALISBURY
CHARLOTTE	SHELburne
CORNWALL	SHOREHAM
FERRISBURGH	STARKSBORO
HINESBURG	VERGENNES
MIDDLEBURY	WALTHAM
MIDDLEBURY URBAN COMPACT	WEYBRIDGE
MONKTON	

Vermont State Plane Coordinate System
 North American Datum of 1983
 SPCS Zone Identifier: 4400
 Geodetic Reference System 80
 5,000-meter grid, Easting - Northing



VERMONT
 COUNTY - TOWN MAP SERIES
ADDISON COUNTY
 SHEET 1 OF 4

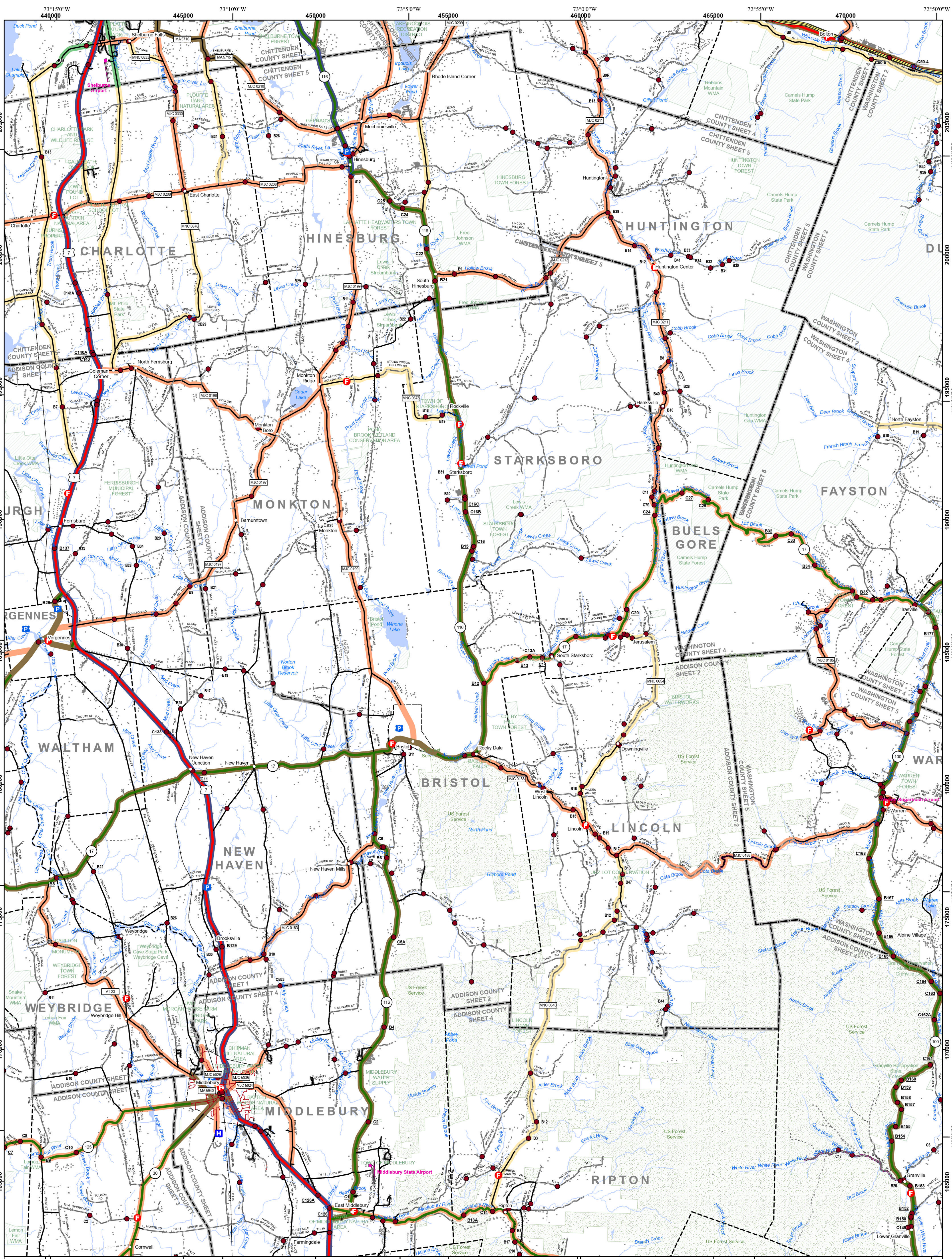
Prepared by the
 Vermont Agency of Transportation
 Mapping Section
 in cooperation with
 U.S. Department of Transportation
 Federal Highway Administration
 August 2024



Scale: 1:63360 (printed size 24 x 36 inches)

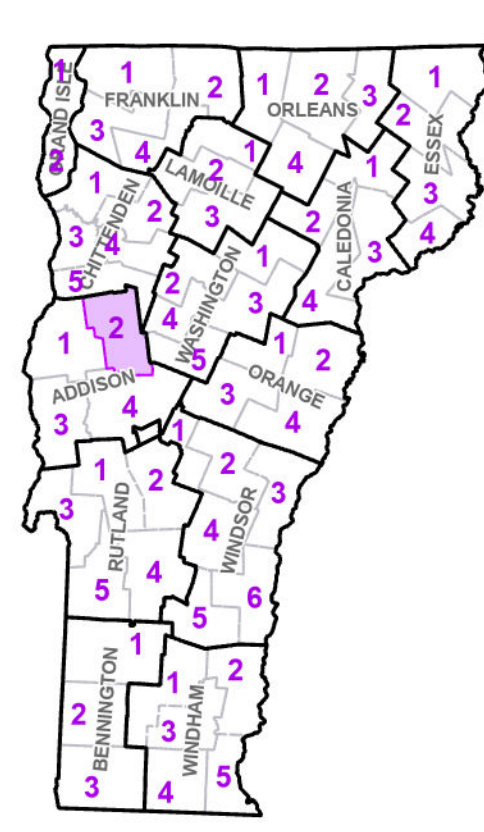
This map was funded in part through grants from the Federal Highway Administration, U.S. Department of Transportation. The representation of the authors expressed herein do not necessarily state or reflect those of the U.S. Department of Transportation.

Contact Information: Vermont Agency of Transportation
 Division of Policy, Planning and Intermodal Development, Mapping Section
 219 N. Main St., Barre, VT 05641, Telephone: 802-828-2600



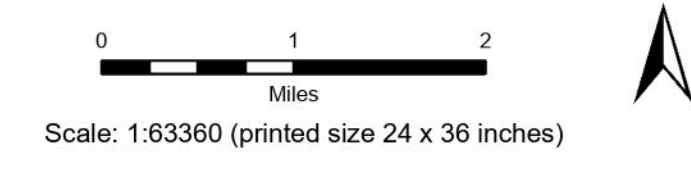
- Interstate
 - U.S. Route
 - Vermont Route
 - Town Highway
 - Interstate
 - US Route Divided
 - US Route
 - State Route Paved
 - State Route Unpaved
 - Town Highway Paved
 - Town Highway Unpaved
 - Unimproved or Impassible
 - Discontinued Highway
 - Town Legal Trail
- Winter Road Closure
 - Railroad
 - Principal Aid Route
 - Minor Arterial
 - Major Collector
 - Minor Collector - Urban
 - Minor Collector-Rural (not Federal Aid eligible)
 - VTrans Maintenance District Office
 - Emergency Response Site
 - Fire Station
 - Law Enforcement
 - Hospital
 - Building
- State Capital (Montpelier)
 - Localities
 - Bridge or Culvert
 - Water Body
 - Stream or Brook
 - Public Airport
- Political Boundary**
 - State Boundary
 - County Boundary
 - Town Boundary
 - Village Boundary
 - Urban Compact Boundary
 - Public Land - State/Municipal
 - Green Mountain National Forest
 - County Subtle
- B20 / C20 State Bridge or Culvert Identifier
 - B20 / C20 Town Bridge or Culvert Identifier

TOWN	TOWN	TOWN
ADDISON	GRANVILLE	RIPTON
BOLTON	HANCOCK	SAINT GEORGE
BRIDPORT	HINESBURG	SALISBURY
BRISTOL	HUNTINGTON	SHELburne
BRISTOL URBAN COMPACT	LINCOLN	STARKSBORO
BUELS GORE	MIDDLEBURY	VERGENNES
CHARLOTTE	MIDDLEBURY URBAN COMPACT	WAITSFIELD
CORNWALL	MONKTON	WALTHAM
DUXBURY	NEW HAVEN	WARREN
FAYSTON	PANTON	WEYBRIDGE
FERRISBURGH	RICHMOND	WILLISTON

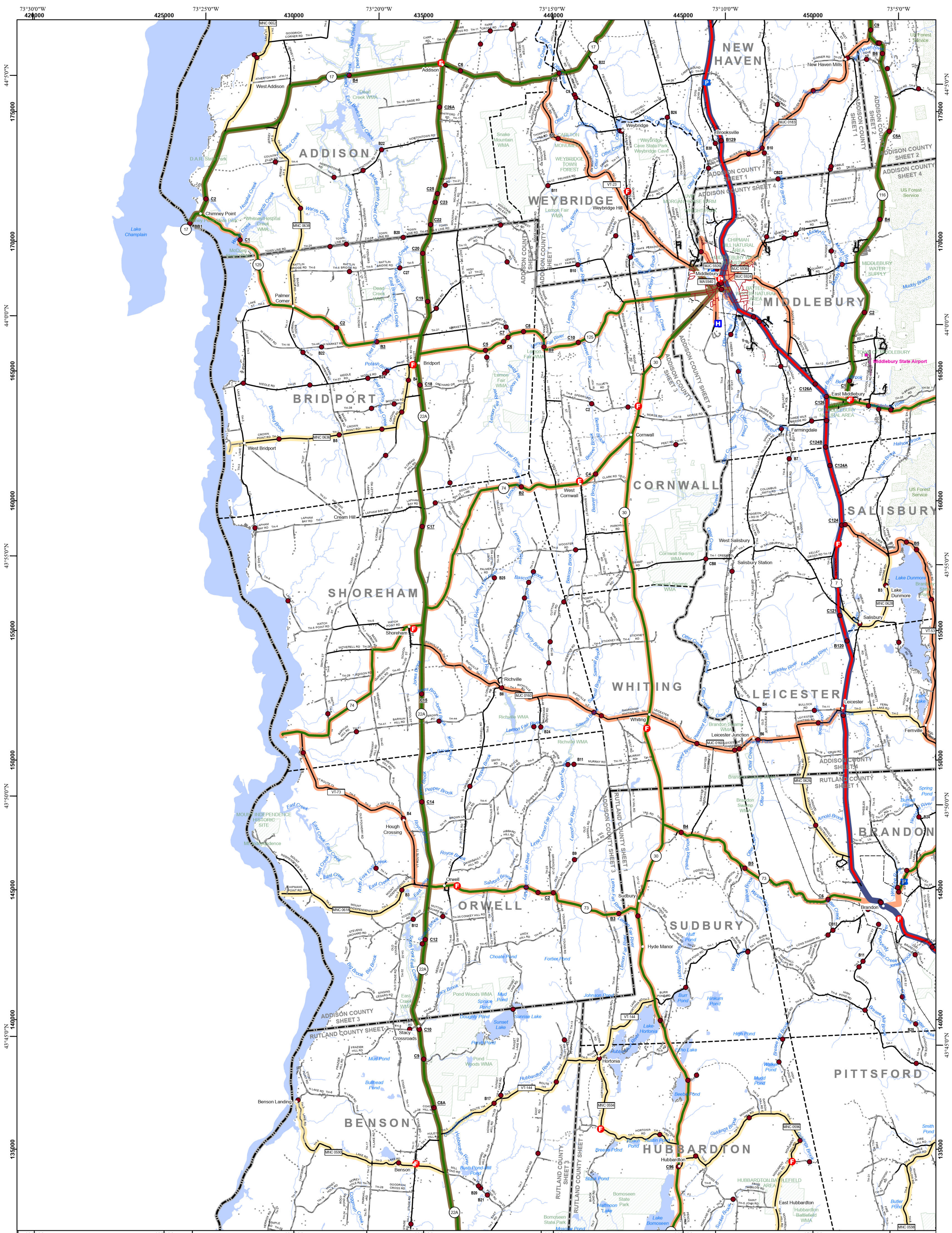


**VERMONT
COUNTY - TOWN MAP SERIES**
ADDISON COUNTY
SHEET 2 OF 4

Prepared by the
Vermont Agency of Transportation
Mapping Section
in cooperation with
U.S. Department of Transportation
Federal Highway Administration
August 2024



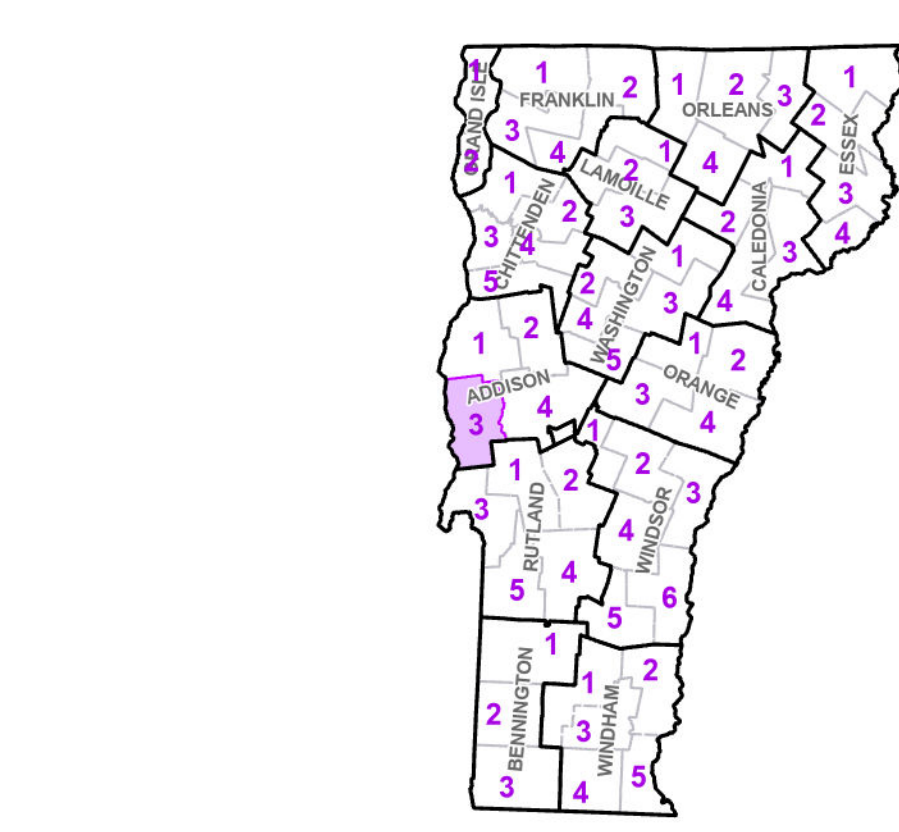
This map was funded in part through grants from the Federal Highway Administration, U.S. Department of Transportation. The representation of the authors expressed herein do not necessarily state or reflect those of the U. S. Department of Transportation.



- Interstate
- U.S. Route
- Vermont Route
- Town Highway
- Interstate
- US Route Divided
- US Route
- State Route Paved
- State Route Unpaved
- Town Highway Paved
- Town Highway Unpaved
- Unimproved or Impassible
- Discontinued Highway
- Town Legal Trail
- Winter Road Closure
- Railroad
- Federal Aid Route
- Principal Arterial
- Minor Arterial
- Major Collector
- Minor Collector - Urban
- Minor Collector-Rural (not Federal Aid eligible)
- VTrans Maintenance District Office
- Emergency Response Site
- Fire Station
- Law Enforcement
- Hospital
- Building
- State Capital (Montpelier)
- Localities
- Bridge or Culvert
- Water Body
- Stream or Brook
- Public Airport
- Political Boundary**
- State Boundary
- County Boundary
- Town Boundary
- Village Boundary
- Urban Compact Boundary
- Public Land - State/Municipal
- Green Mountain National Forest
- County Subtle

TOWN	TOWN
ADDISON	NEW HAVEN
BENSON	ORWELL
BRANDON	PITTSFORD
BRANDON URBAN COMPACT	PROCTOR
BRIDPORT	SALISBURY
BRISTOL	SHOREHAM
CORNWALL	SUDBURY
HUBBARDTON	WALTHAM
LEICESTER	WEYBRIDGE
MIDDLEBURY	WHITING
MIDDLEBURY URBAN COMPACT	

Vermont State Plane Coordinate System
 North American Datum of 1983
 SPCS Zone Identifier: 400
 Geoidic Reference System 80
 5,000-meter grid, Easting - Northing



VERMONT COUNTY - TOWN MAP SERIES
ADDISON COUNTY
SHEET 3 OF 4

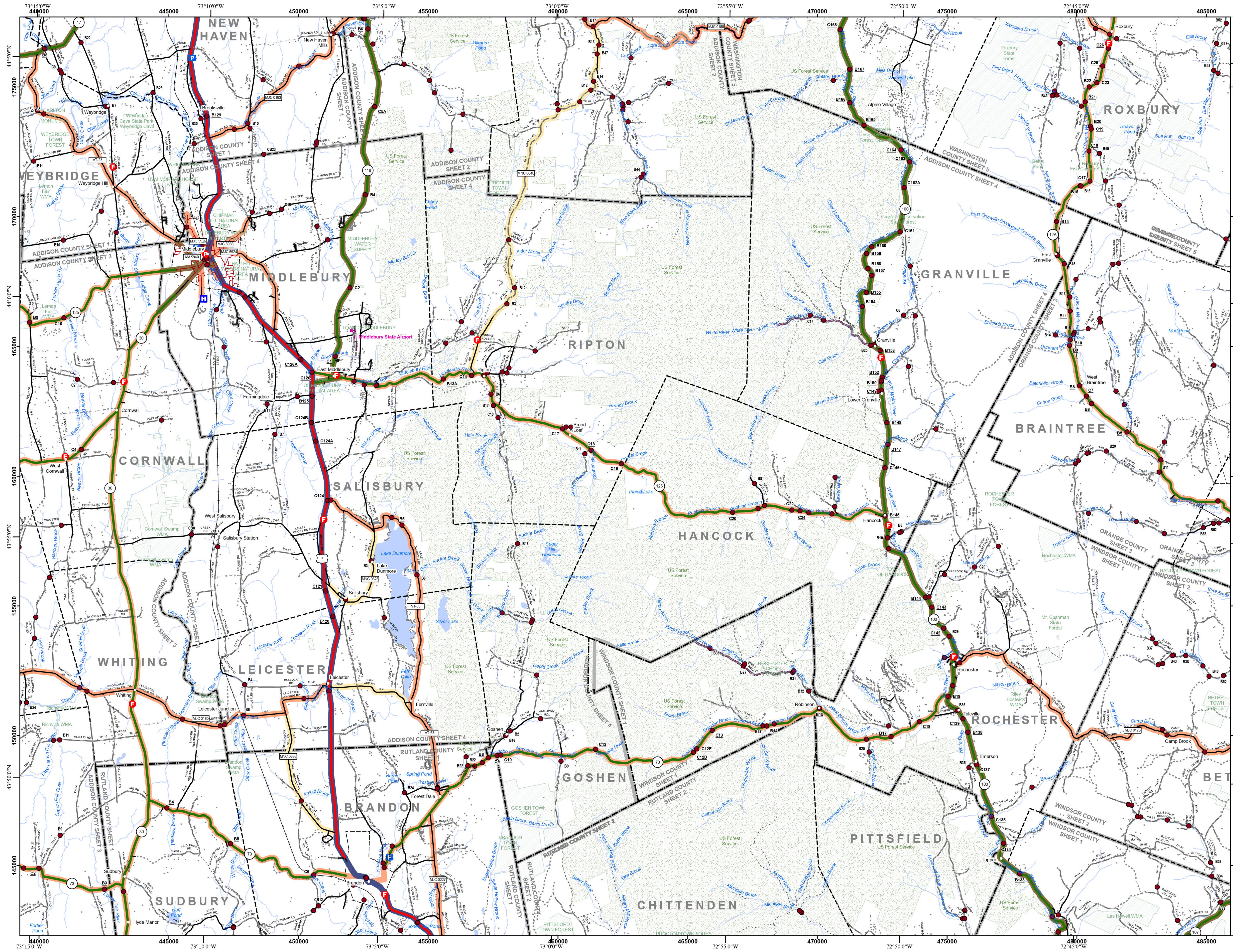
Prepared by the
 Vermont Agency of Transportation
 Mapping Section
 in cooperation with
 U.S. Department of Transportation
 Federal Highway Administration
 August 2024

0 1 2
 Miles

Scale: 1:63360 (printed size 24 x 36 inches)

Contact Information: Vermont Agency of Transportation
 Division of Policy, Planning and Intermodal Development, Mapping Section
 219 N. Main St., Barre, VT 05641, Telephone: 802-828-2600

This map was funded in part through grants from the Federal Highway Administration, U.S. Department of Transportation. The representation of the authors expressed herein do not necessarily state or reflect those of the U. S. Department of Transportation.

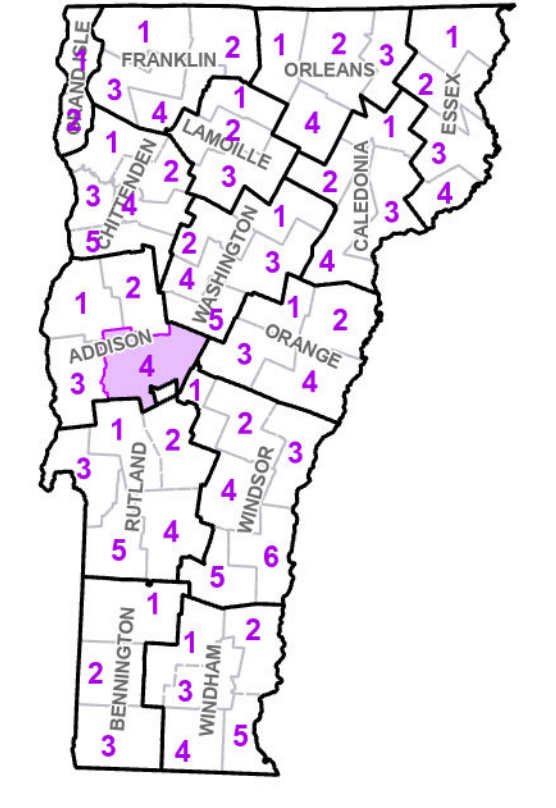


- Interstate
 - U.S. Route
 - Vermont Route
 - Town Highway
 - US Route Divided
 - US Route
 - State Route Paved
 - State Route Unpaved
 - Town Highway Paved
 - Town Highway Unpaved
 - Unimproved or Impossible
 - Discontinued Highway
 - Town Legal Trail
 - Winter Road Closure
 - Railroad
 - Principal Arterial
 - Minor Arterial
 - Major Collector
 - Minor Collector - Urban
 - Minor Collector-Rural (not Federal Aid eligible)
 - VTrans Maintenance District Office
- Emergency Response Site**
- Fire Station
 - Law Enforcement
 - Hospital
 - Building
 - Localities
 - State Capital (Montpelier)
 - Bridge or Culvert
 - Water Body
 - Stream or Brook
 - Public Airport
 - State Boundary
 - County Boundary
 - Town Boundary
 - Village Boundary
 - Urban Compact Boundary
 - Public Land - State/Municipal
 - Green Mountain National Forest
 - County Subtle

TOWNSHIP
BRANDON
CHITTENDEN
CORNWALL
GOSHEN
GRANVILLE
HANCOCK
LEICESTER
MIDDLEBURY
MIDDLEBURY URBAN COMPACT
RIPTON
ROCKESTER
SALISBURY

B20 / C20 State Bridge or Culvert Identifier
B20 / C20 Town Bridge or Culvert Identifier

Vermont State Plane Coordinate System
 North American Datum of 1983
 SPCS Zone Identifier: 4400
 Geodetic Reference System 80
 5,000-meter grid, Easting - Northing



VERMONT COUNTY - TOWN MAP SERIES
ADDISON COUNTY
SHEET 4 OF 4

Prepared by the
 Vermont Agency of Transportation
 Mapping Section
 in cooperation with
 U.S. Department of Transportation
 Federal Highway Administration
 August 2024

Scale: 1:63,360 (printed size: 36 x 24 inches)

Contact information: Vermont Agency of Transportation
 Division of Policy, Planning and Intermodal Development, Mapping Section
 219 N. Main St., Barre, VT 05641
 Telephone: 802-828-2600

This map was funded in part through grants from the Federal Highway Administration, U.S. Department of Transportation. The representation of the authors expressed herein do not necessarily state or reflect those of the U.S. Department of Transportation.