

Hodge, Paul

From: Hodge, Paul
Sent: Tuesday, October 26, 2010 8:45 AM
To: Dutcher, Daniel; Croft, Johnathan; Jeffrey S. Marlin; Scribner, Sue
Subject: West Haven - Saw Mills- Old homes

From Hamilton Child Gazetteer and Business Directory of Rutland County for 1881-82

Page 256 (9) J. P. Hunt's saw-mill located on Hubbardton River, near road 12

Page 256 (10) The first saw-mill was erected in 1785, on the lower fall on Hubbardton River, since known as "The Hunt Mill"

Page 256 (11) A carding machine and clothing works were established by Erastus Coleman, on the upper falls of Hubbardton River, about the year 1802

From H. P. Smith and W. S. Rann History of Rutland County 1886

Page 862 The first sawmill stood on the lower fall on Hubbardton River, and is now known as the Hunt mill.

Dr. Simeon Swmith built a saw-mill on Hubbardton River, and operated a forge on the Falls, afterwards owned by General Jonathan Orms

Page 865 About the year 1802 Erastus Coleman established a carding-machine and clothing works on the upper falls of Hubbardton River until 1844

The saw-mill now operated by J. P. Hunt was built for a woolen factory about 1834 by Isaac Norton, and Hiram Coleman

William Eastwood succeeding Mr. Norton afterward owning the entire interest the Mr. Vower converted it into an ax-helve and spoke factory

The first saw-mill in town, the Hunt mill, was erected on the lower fall of Hubbardton River in 1785. There have been three other saw-mills on that stream, the first erected by Erastus Coleman about 1-1/2 mile above the Hunt mill, Quartus Torrey operated one between the spoke factory site and Coleman mill, and Isaac Norton ran one between the Torrey mill and the spoke factory.

Page 866 The Grist-mill and saw-mill of Nelson O'Donnell has been in operation for ten or twelve years; L. B. Cook is the present proprietor of the spoke factory.

Note:

The Hunt mill, was erected on the lower fall of Hubbardton River in 1785

There have been three other saw-mills on that stream

Isaac Norton ran one between the Torrey mill and the spoke factory

Quartus Torrey operated one between the spoke factory site and Coleman mill

The first erected by Erastus Coleman about 1-1/2 mile above the Hunt mill,

This area is on TH 14

***** Old homes *****

The Historic Architecture of Rutland County

Page 444 & 445 Number 20 Classic Cottage house 1836 located on TH 13

Number 21 Gable roof house 1835 located on TH 14

From Hamilton Child Gazetteer and Business Directory of Rutland Country for 1881-82

Page 256 (9) J. P. Hunt's saw-mill located on Hubbardton River, near road 12

Page 256 (10) The first saw-mill was erected in 1785, on the lower fall on Hubbardton River, since known as "The Hunt Mill"

Page 256 (11) A carding machine and clothing works were established by Erastus Coleman, on the upper falls of Hubbardton River, about the year 1802

From H. P. Smith and W. S. Rann History of Rutland County 1886

Page 862 The first sawmill stood on the lower fall on Hubbardton River, and is now known as the Hunt mill.

Dr. Simeon Swmith built a saw-mill on Hubbardton River, and operated a forge on the Falls, afterwards owned by General Jonathan Orms

Page 865 About the year 1802 Erastus Coleman established a carding-machine and clothing works on the upper falls of Hubbardton River until 1844

The saw-mill now operated by J. P. Hunt was built for a woolen factory about 1834 by Isaac Norton, and Hiram Coleman

William Eastwood succeeding Mr. Norton afterward owning the entire interest the Mr. Vower converted it into an ax-helve and spoke factory

The first saw-mill in town, the Hunt mill, was erected on the lower fall of Hubbardton River in 1785. There have been three other saw-mills on that stream, the first erected by Erastus Coleman about 1-1/2 mile above the Hunt mill, Quartus Torrey operated one between the spoke factory site and Coleman mill, and Isaac Norton ran one between the Torrey mill and the spoke factory.

Page 866 The Grist-mill and saw-mill of Nelson O'Donnell has been in operation for ten or twelve years; L. B. Cook is the present proprietor of the spoke factory.

Note:

The Hunt mill, was erected on the lower fall of Hubbardton River in 1785

There have been three other saw-mills on that stream

Isaac Norton ran one between the Torrey mill and the spoke factory

Quartus Torrey operated one between the spoke factory site and Coleman mill

The first erected by Erastus Coleman about 1-1/2 mile above the Hunt mill,

This area is on TH 14

***** Old homes *****

The Historic Architecture of Rutland County

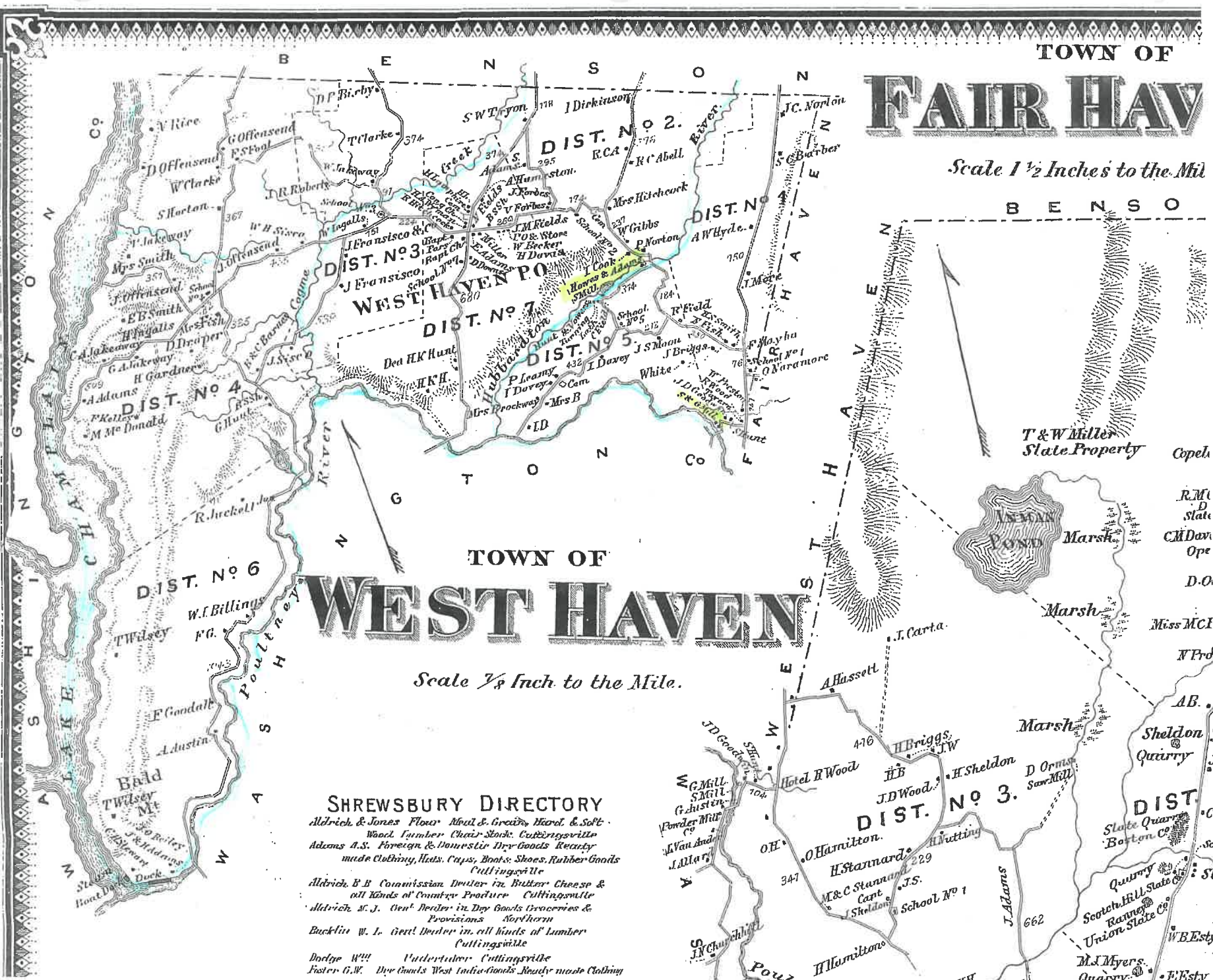
Page 444 & 445

Number 20 Classic Cottage house 1836 located on TH 13

Number 21 Gable roof house 1835 located on TH 14

TOWN OF FAIR HAVEN

Scale 1 1/2 Inches to the Mile

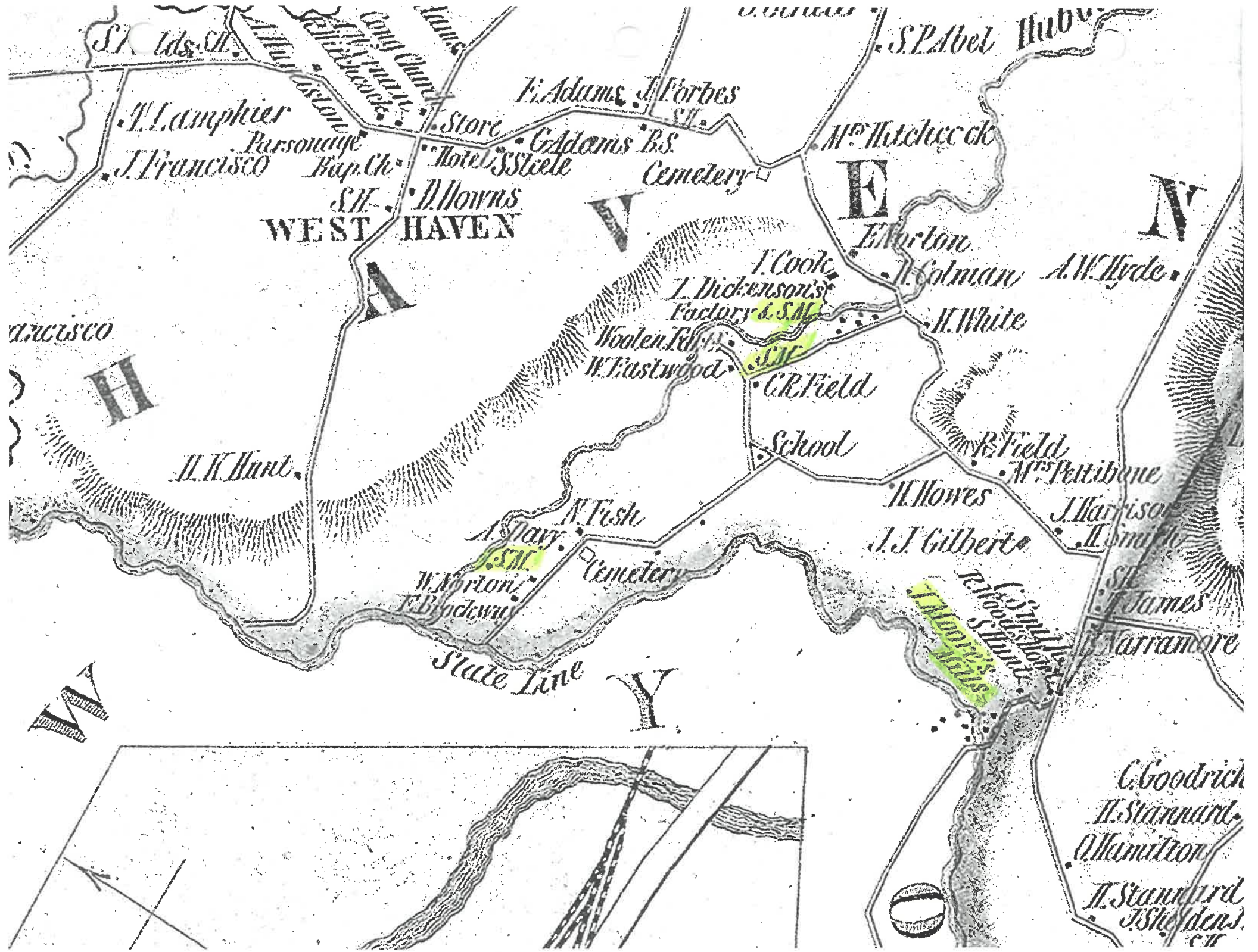


TOWN OF WEST HAVEN

Scale 7/8 Inch to the Mile.

SHREWSBURY DIRECTORY
 Aldrich & Jones Flour, Meal & Grain, Wood, & Soft Wood, Lumber, Chair Sticks, Cuttingsville
 Adams A.S. Foreign & Domestic Dry Goods, Ready made Clothing, Hats, Caps, Boots, Shoes, Rubber Goods, Cuttingsville
 Aldrich, E.B. Commission Dealer in Butter, Cheese & all kinds of Country Produce, Cuttingsville
 Aldrich, S.J. Genl. Dealer in Dry Goods, Groceries & Provisions, Northorn
 Bucklin, W.L. Genl. Dealer in all kinds of Lumber, Cuttingsville
 Dodge, Wm. Undertaker, Cuttingsville
 Foster, G.W. Dry Goods, West India Goods, Ready made Clothing

T & W Miller Slate Property
 Copel
 R.M. D. State
 C.H. Dav. Ope
 D.O.
 Miss MCI
 N Pro
 AB.
 Sheldon Quarry
 DIST. NO. 3.
 Slate Quarry, Boston Co.
 Quarry
 Scotch Hill State Co.
 Union State Co.
 M.J. Myers. Quarry.
 W.B. Esty



St. Ids. St.

T. Lamphier

J. Francisco

WEST

HAVEN

T. Adams J. Forbes

Store

G. Adams B.S.

Cemetery

S.P. Abel

M. Hitchcock

E

H. Norton

H. Colman

A.W. Hyde

J. Coolidge
I. Dickenson's
Factory & S.M.

Woolen Factory
W. Eastwood

C.R. Field

School

H. White

R. Field

M. Pettibone

H. Howes

J.J. Gilbert

J. Harrison

H. Smith

A. Flay

N. Fish

Cemetery

W. Korton
F. Blackwell

State Line

J. Moore's
Tailors

Narramore

C. Goodrich

H. Stannard

O. Hamilton

H. Stannard

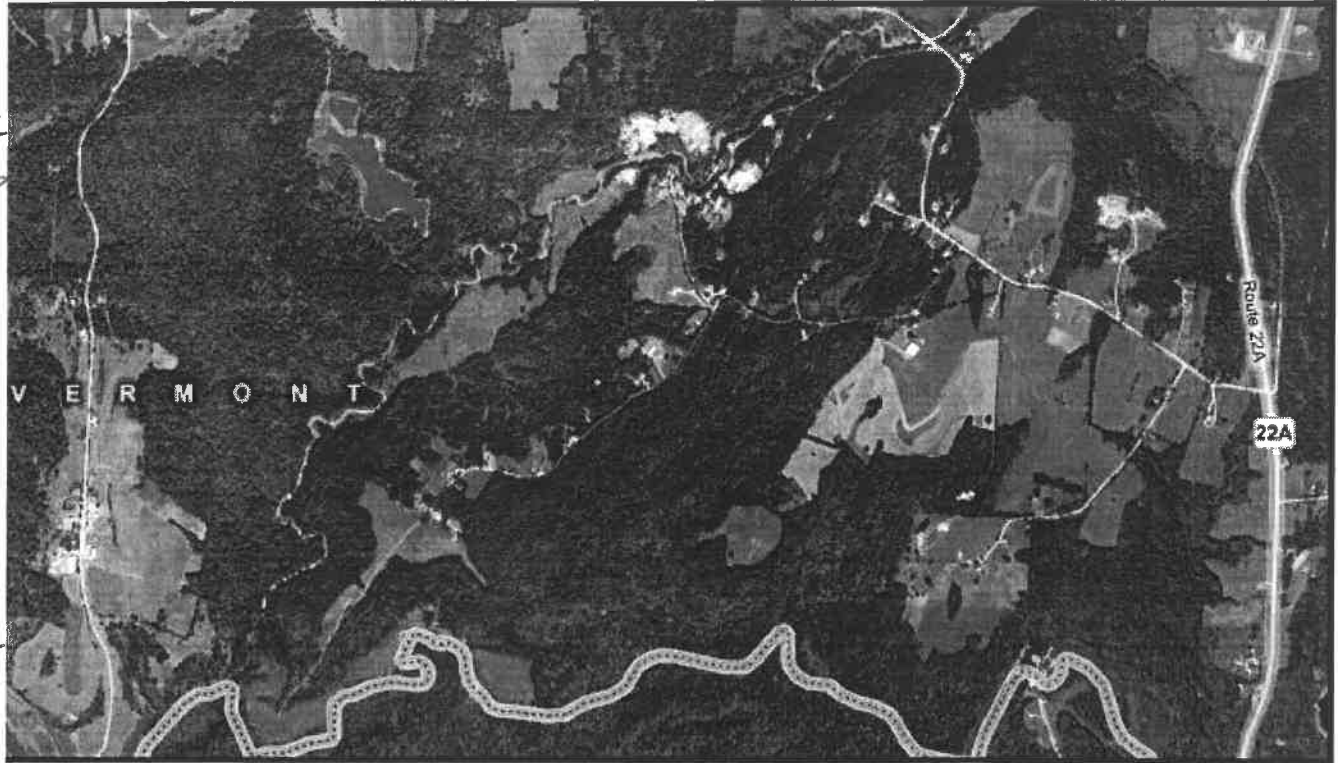
J. Shepley

N

Y



Print this page in a more readable format: Click **Print** next to the lower-left corner of the map.



West Haven, VT ↑

LOWER

↑ UPPER

LOWER FALL 1 - 1/2 MILES TO UPPER

Print this page in a more readable format: Click **Print** next to the lower-left corner of the map.



West Haven, VT