

- |  |  |
|--|--|
| <ul style="list-style-type: none"> <li>— Interstate</li> <li>— Interstate Ramp</li> <li>— Divided U.S. Highway</li> <li>— U.S. Highway</li> <li>— U.S. Highway Ramp</li> <li>— State Highway - Paved</li> <li>— State Highway - Gravel</li> <li>— State Highway Ramp - Paved</li> <li>— Class 1 - Paved</li> <li>— Class 2 - Paved</li> <li>— Class 2 - Gravel</li> <li>— Class 2 - Graded Earth</li> <li>— Class 3 - Paved</li> <li>— Class 3 - Gravel</li> <li>— Class 3 - Graded Earth</li> <li>— Class 3 - Unimproved / PrIMITIVE</li> <li>— Class 4 - Paved</li> <li>— Class 4 - Gravel</li> <li>— Class 4 - Graded Earth</li> <li>— Class 4 - Unimproved / PrIMITIVE</li> <li>— Class 4 - Impassable or Untraveled</li> <li>— National or State Forest Highway</li> <li>— Legal Trail</li> <li>— Unconfirmed Legal Trail</li> <li>— Private</li> <li>— Discontinued</li> <li>— Proposed Highway</li> </ul> | <p><b>Functional Class</b></p> <ul style="list-style-type: none"> <li>— Principal Arterial - Rural</li> <li>— Minor Arterial - Rural</li> <li>— Major Collector - Rural</li> <li>— Minor Collector - Rural</li> <li>— Federal Aid Urban</li> </ul> <p><b>Bridge-Culvert</b></p> <ul style="list-style-type: none"> <li>■ Bridge or Culvert Greater than 20'</li> <li>● Bridge or Culvert 6' - 20'</li> <li>▼ Archived Town Short Data</li> </ul> <p><b>Railroad</b></p> <ul style="list-style-type: none"> <li>— Railroad</li> <li>— Inactive Railroad - Rail Trail</li> <li>■ Buildings/Structures (E911)</li> <li>■ Airport</li> <li>■ Named Lake-Pond</li> <li>■ Unnamed Lake-Pond</li> <li>■ Named River-Stream</li> <li>■ Unnamed River-Stream</li> <li>■ Public Land</li> <li>■ USNGbased_grid18</li> <li>■ USNGbased_grid19</li> <li>■ District (including extension)</li> <li>— Town Boundary</li> </ul> |
|--|--|

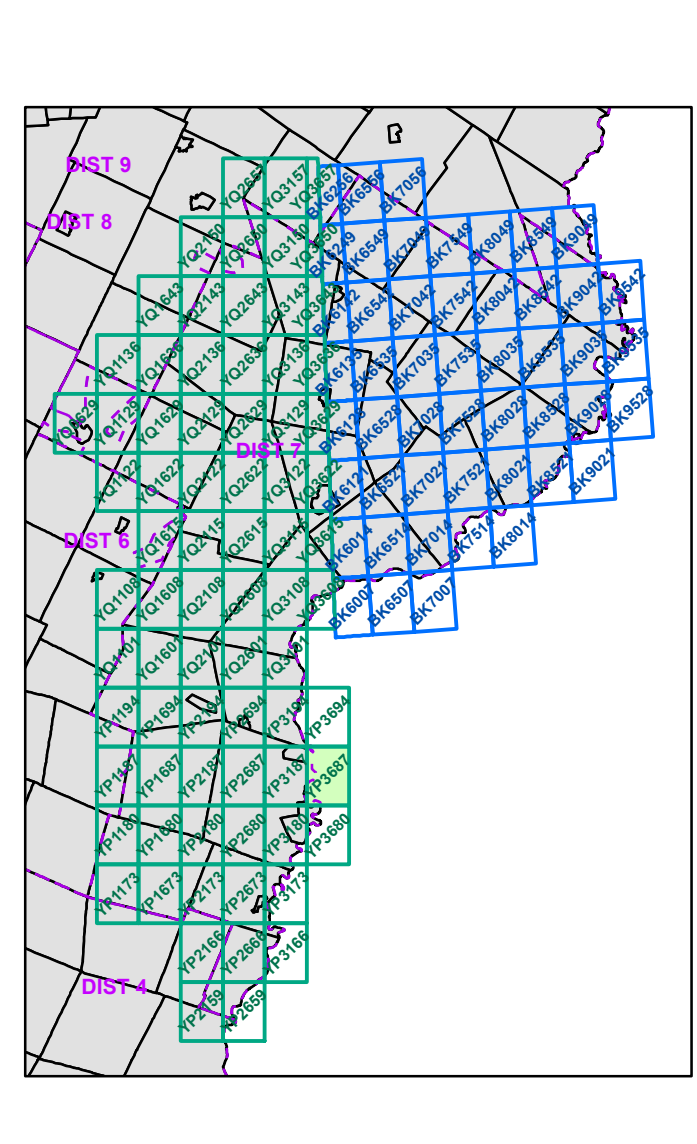
1,000 meter US National Grid  
 North American Datum of 1983  
 SPCS\_Zone\_Identifier: 4400  
 Geodetic Reference System 80  
 500-meter grid, Easting - Northing

Vermont State Plane Coordinate System  
 North American Datum of 1983  
 SPCS\_Zone\_Identifier: 4400  
 Geodetic Reference System 80  
 500-meter grid, Easting - Northing

**B20 / C20** State Bridge or Culvert Identifier  
**B20 / C20** Town Bridge or Culvert Identifier

2.2 Distance along linear referenced highway (route log measure)

September 29, 2011



0 0.2 0.4  
 Miles

Scale 1:12,672  
 (printed size: 24 x 36 inches)

**FIELD ASSESSMENT MAP SERIES**  
 (Tropical Storm Irene)

District:  
**USNG Page #: 18TYP3687**  
**Sheet ID: YP3687**

**TOWNS INCLUDED ON SHEET**  
 Newbury  
 Newbury Village  
 Ryegate  
 Wells River Village

Contact information:  
 Vermont Agency of Transportation, Mapping Unit  
 1 National Life Drive, Montpelier, VT 05633-5001  
 Telephone: 802-828-2600

This map was funded in part through grants from the Federal Highway Administration, U.S. Department of Transportation. The representation of the authors expressed herein do not necessarily state or reflect those of the U.S. Department of Transportation.