

TOWN HWY. No.	LENGTH IN MILES CLASS 3	CLASS 4	TOWN HWY. No.	LENGTH IN MILES CLASS 3	CLASS 4
6	0.05		49	0.16	
7	0.34		50	0.58	
8	3.37		51	0.06	
9	1.80		52	0.25	
10	0.15		53	0.25	
11	0.29		54	0.05	
12	0.33		55	0.22	
13	0.29		56	0.24	
14	0.72	(0.58)	57	0.74	
15	3.83		58	0.31	
16	0.75		59	0.08	
17	0.95		60	0.36	
18	0.54		65	0.97	
19	3.34		66	0.73	
20	0.32		67	0.85	
21	0.95		68	0.75	
22	1.07		69	0.35	
23	1.56		70	0.51	
24	0.60		71	0.71	
25	1.02		72	0.05	
26	1.37		73	0.20	
27	1.02		74	0.72	
28	1.77		75	0.12	
29		(0.85)	76	0.18	
30	0.45		77	0.71	
31	1.56		78	0.41	
33	0.15		79	0.77	
34	0.22		81	0.20	
35	0.06		82	0.17	
38	0.06		83	0.22	
39	0.40	(0.10)	84	0.04	
41	0.40		85	0.08	
42	2.91		86	0.03	
43	0.65		87	0.24	
44	0.28		88	0.53	
45	0.64		89	0.20	
46	0.17		90	0.66	
47	0.37		91	0.23	
48	0.17		92		(0.51)
TOTAL	48.85		TOTAL	2.04	

TOWN HWY. No.	LENGTH IN MILES "NOT UP TO STANDARD"	LEGAL TRAIL No.	LENGTH IN MILES LEGAL TRAIL
15	(0.53)	2	(0.29)
TOTAL	0.53	3	(0.50)
		4	(2.00)
		5	(2.30)
		6	(1.00)
		7	(0.33)
		9	(0.72)
		10	(0.99)
		11	(0.32)
		12	(1.42)
		13	(0.08)
		14	(0.03)
		15	(0.59)
		16	(0.50)
TOTAL		TOTAL	11.07

MILEAGE SUMMARY

CLASS 2	LENGTH IN MILES	CLASS 3	LENGTH IN MILES
TH-1	4.370		
TH-2	2.000		
TH-3	1.540		
TH-4	1.380		
TH-5	1.090		
TOTAL CLASS 2	10.380		
TOTAL CLASS 3	48.85		
TOTAL TOWN	59.230		
STATE HIGHWAY VT-100	5.547		
TOTAL STATE HIGHWAY	5.547		
TOTAL STATE	5.547		

TOTAL, TRAVELED HIGHWAYS, FEB. 10, 2024: 64.777
(Excludes Class 4 and Legal Trail Mileage)

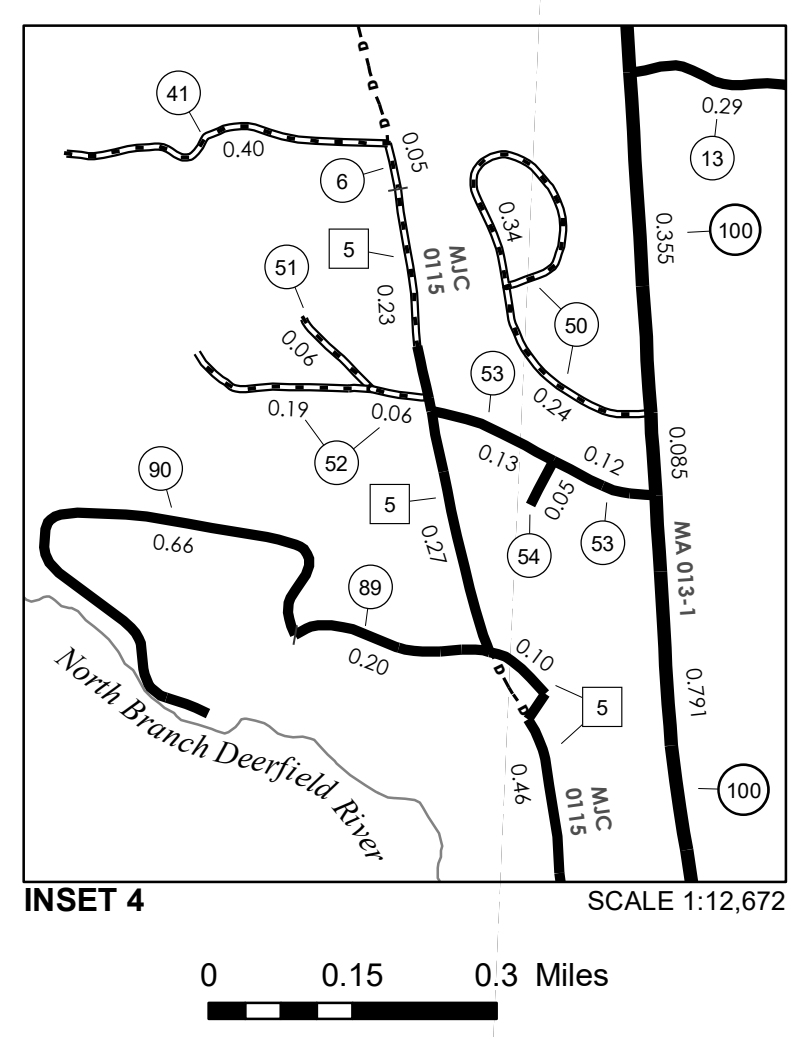
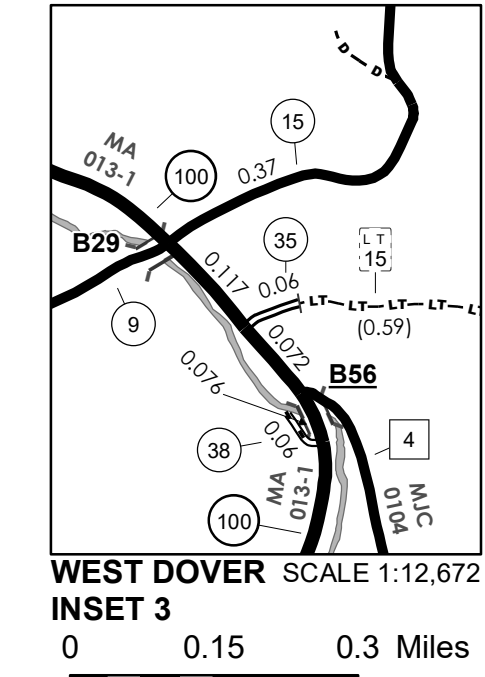
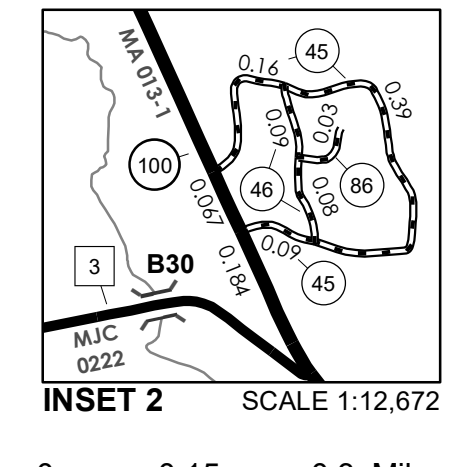
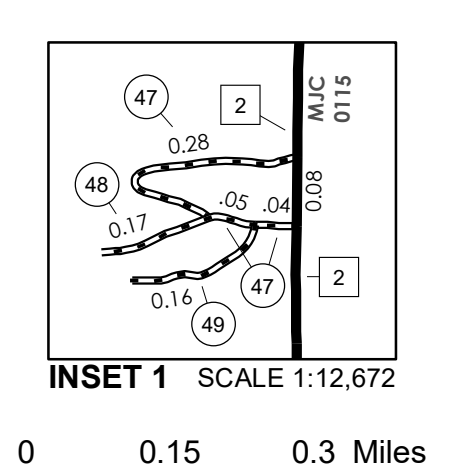
- HIGHWAYS**
- INTERSTATE
 - U.S. ROUTE
 - STATE ROUTE
 - CLASS 1
 - CLASS 2
 - CLASS 3
 - CLASS 4
 - LEGAL TRAIL
 - PARK AND RIDE
 - INTERSTATE OR DIVIDED HIGHWAY
 - STATE - HARD SURFACE OR PAVED
 - TOWN - HARD SURFACE OR PAVED
 - GRAVEL
 - SOIL OR GRADED AND DRAINED EARTH
 - UNIMPROVED OR PRIMITIVE
 - IMPASSABLE OR UNTRAVELED
 - LEGAL TRAIL
 - DISCONTINUED
 - HIGHWAY CLASS CHANGE
 - RAILROAD
 - INACTIVE RAILROAD
 - PUBLIC LAND - NATIONAL FOREST
 - PUBLIC LAND - STATE/MUNICIPAL
 - NFR NATIONAL FOREST ROAD
 - ACE ARMY CORPS OF ENGINEERS
 - USGH UNITED STATES GOV. HWY.

- POLITICAL SUBDIVISIONS**
- STATE BOUNDARY
 - COUNTY BOUNDARY
 - TOWN BOUNDARY
 - VILLAGE BOUNDARY
 - URBAN COMPACT BOUNDARY
 - WATER BODY
 - STREAM OR BROOK
- BRIDGE OR CULVERT**
- BRIDGE OR CULVERT > 20'
 - BRIDGE OR CULVERT 6' - 20'
 - BIKE PATH STRUCTURE
 - VTCULVERTS BRIDGE
 - VTCULVERTS CULVERT > 6'
- FEDERAL CLASSIFICATION IDENTIFIER**
- MA MINOR ARTERIAL
 - MJC MAJOR COLLECTOR
 - MNC MINOR COLLECTOR
 - PA PRINCIPAL ARTERIAL
- B34 / C34 STATE BRIDGE OR CULVERT IDENTIFIER**
- B34 / C34 TOWN BRIDGE OR CULVERT IDENTIFIER**

DISCLAIMER:
The untraveled highways (laid-out town highways), discontinued highways, and legal trails herein are those of which the Agency of Transportation has record; others may exist.

Highway and bridge data by the Agency of Transportation. Town short structures drawn from the VTCULVERTS (formerly VOBCIT) online database. All other data from the Vermont Open Geodata Portal. Only named streams shown.

Vermont State Plane Coordinate System
North American Datum of 1983
SPCS_Zone_Identifier: 4400
Geodetic Reference System 80
4,000-meter grid, Easting - Northing



VERMONT GENERAL HIGHWAY MAP

Town of Dover

WINDHAM COUNTY
Transportation District #1
Prepared by the Vermont Agency of Transportation
Division of Policy, Planning and Intermodal Development
in cooperation with
U.S. Department of Transportation
Federal Highway Administration

