

TOWN HWY. NO.	LENGTH IN MILES	CLASS	TOWN HWY. NO.	LENGTH IN MILES	CLASS	TOWN HWY. NO.	LENGTH IN MILES	CLASS
8	0.14		84	0.24		159	0.04	
9	1.58		85	0.10		160	0.10	
10	0.35		86	0.14		161	0.08	
13	0.14		87	0.03		162	0.21	
14	0.10		88	0.13		163	0.47	
15	0.67		89	0.13		164	0.16	
16	1.00		90	0.12		167	0.07	
17		(0.05)	91	0.18		168	0.12	
18	0.13		92	0.15		169	0.11	
19	0.05	(0.15)	93	0.08		170	0.19	
20	1.22		94	0.15		171	0.58	
21	1.51		95	0.07		172	0.09	
22	2.29		98	0.04		173	0.48	
23	0.27	(0.28)	99	0.09		174	0.17	
25	0.35		100		(0.08)	175	0.13	
26	0.44	(0.37)	101	0.16		176	0.26	
27	1.95	(0.09)	102	0.08		177	0.26	
28	3.60		103	0.07		178	0.19	
29	0.10		104	0.03		179	0.11	
30	0.21		105	0.09		180	0.09	
31	1.06	(0.64)	106	0.13		180	0.09	(0.04)
32	0.35		107	0.06		181	0.22	
33	0.16	(0.38)	108	0.05		182	0.21	
34		(0.26)	109	0.05		183	0.32	
35	0.34		110	0.04		184	0.65	
36	1.75	(0.86)	111	0.07		185	0.06	
37	0.30		112	0.05	(0.04)	186	0.53	
38	1.77		113	0.08		187	0.18	
39	1.05		114	0.05		188	0.08	
40		(0.50)	115	0.06		189	0.23	
41	0.21	(0.29)	116	0.05		191	0.22	
42	0.08		117	0.06		192	0.04	
43	4.20		118	0.03		193	0.19	
44	4.37		119	0.10		194	0.10	
45	1.07	(0.05)	120	0.10		195	0.42	
46	0.67		121	0.30		196	0.06	
48	0.33		122	0.04		197	0.35	
49	0.45		123	0.05		198	0.11	
50	0.95		124	0.08		199	0.19	
51	0.40		125	0.47		200	0.27	
52	0.16	(0.12)	126	0.07		201	0.10	
53	0.91		127	0.03		202	0.61	
54	0.35		128	0.11		203	0.23	
55	1.99	(0.45)	129	0.20		204	0.41	
56			130	0.07		205	0.09	
57	0.60		131	0.11		206	0.16	
59	2.00		132	0.26		207	0.53	
60	1.16		133	0.51		208	0.36	
61	1.00		134	0.26		209	0.13	
62	0.45		135	0.26		210	0.23	
63	0.40		136	0.23		211	0.60	
64	0.10		137	0.07		212	0.13	
65	0.10		138	0.19		213	0.10	
66	0.13		139	0.33		214	0.09	
67	0.05		140	0.18		215	0.13	
68	0.10		141	0.24		216	0.22	
69	0.09		142	0.11		217	0.12	
70	0.16		143	0.22		218	0.25	
71	0.30	(0.07)	144	0.26		219	0.17	
73	1.70		145	0.13		220	0.16	
74	0.16		146	0.13		221	0.35	
75	0.14		147	0.40		222	0.31	
76	0.07		148	0.18		223	0.21	
77	0.10		149	0.25		224	0.04	
78	0.07		150	0.09		225	0.04	
79	0.06		151	0.09		226	0.18	
80	0.42		152	0.16		227	0.06	
81	0.10		153	0.27				
82	0.15		154	0.15				
83	0.24		155	0.30				
			156	0.43				
			157	0.04				

TOTAL 73.31 4.72
 * This portion of town highway is Class 3, but is functionally Class 4

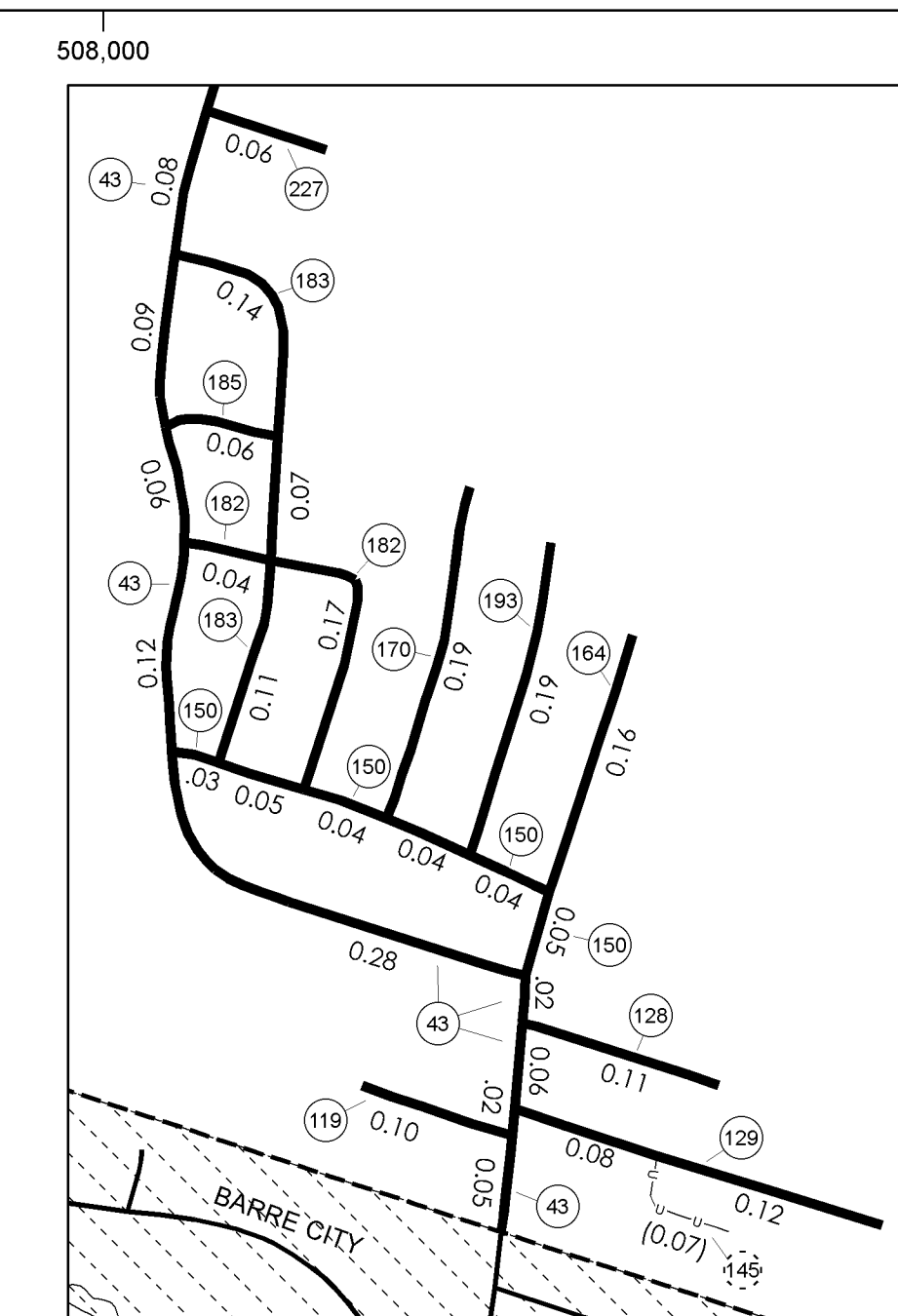
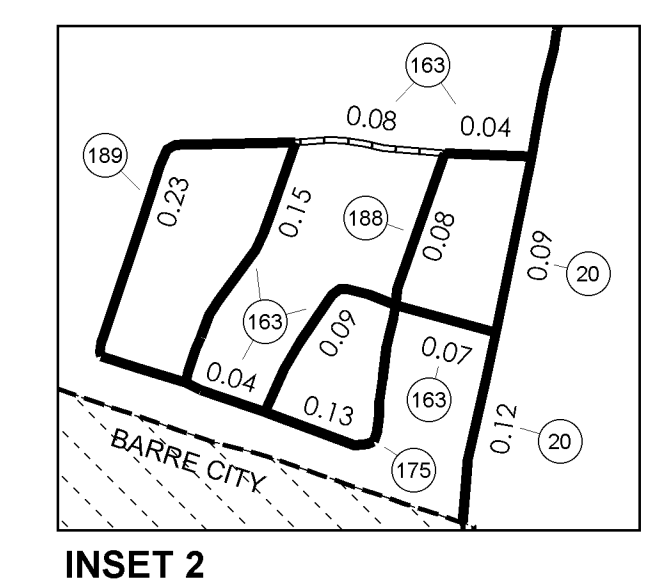
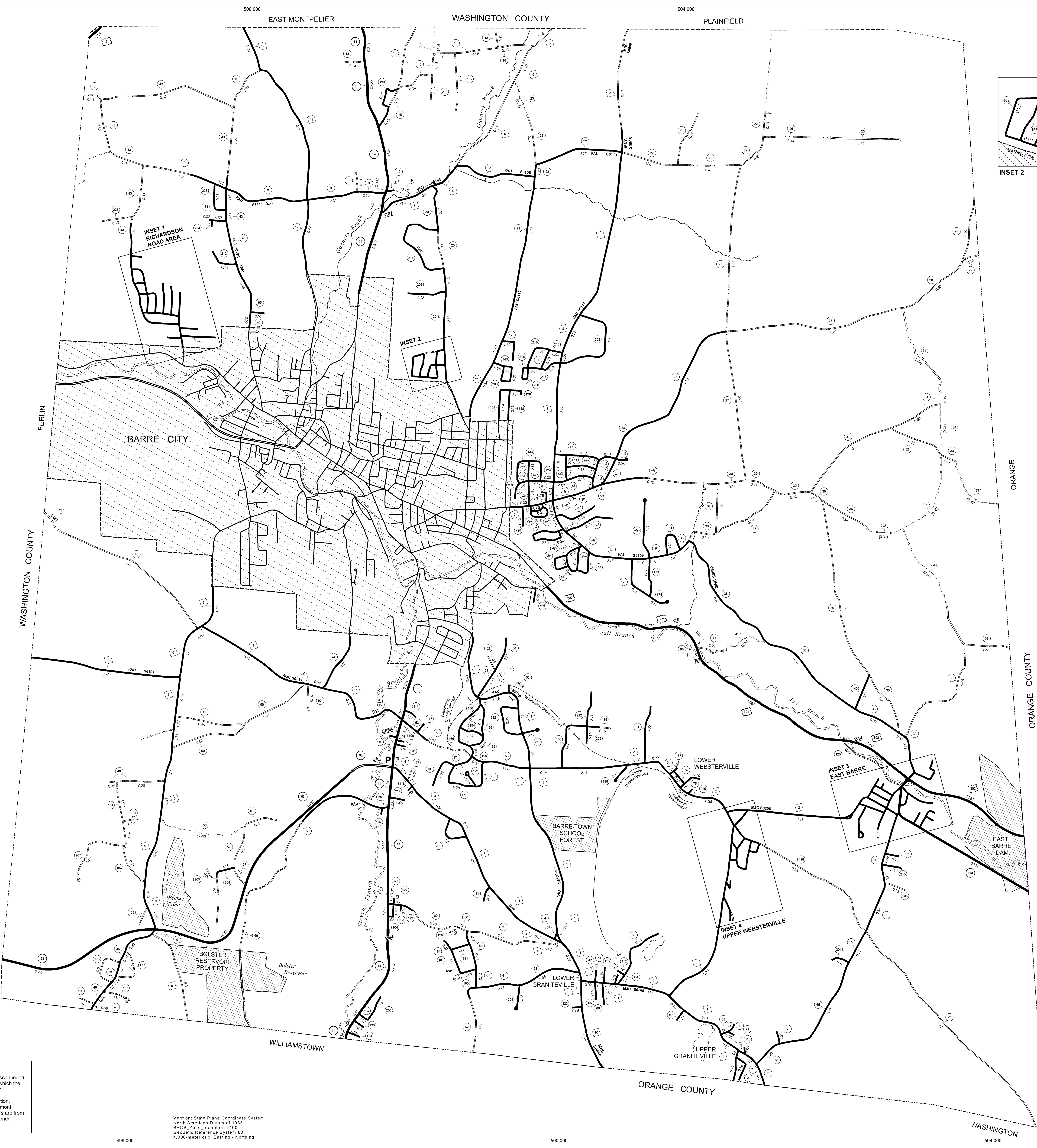
MILEAGE SUMMARY

CLASS 2	
TH-1	3,850
TH-2	2,660
TH-3	1,270
TH-4	1,590
TH-5	1,580
TH-6	1,510
TH-7	1,450
TH-8	3,320
TH-9	2,150
TH-10	0,540
TH-12	1,640
TOTAL CLASS 2	21,560
CLASS 3	
TOTAL CLASS 3	73,310
TOTAL TOWN	94,870
STATE HIGHWAY	
VT-14	4,033
VT-63	2,910
VT-110	1,124
TOTAL STATE HIGHWAY	8,067
US HIGHWAY	
US-2	0,085
US-302	3,330
TOTAL US HIGHWAY	3,415
TOTAL STATE	11,482
TOTAL TRAVELED HIGHWAYS, FEB. 10, 2008: 106,352	

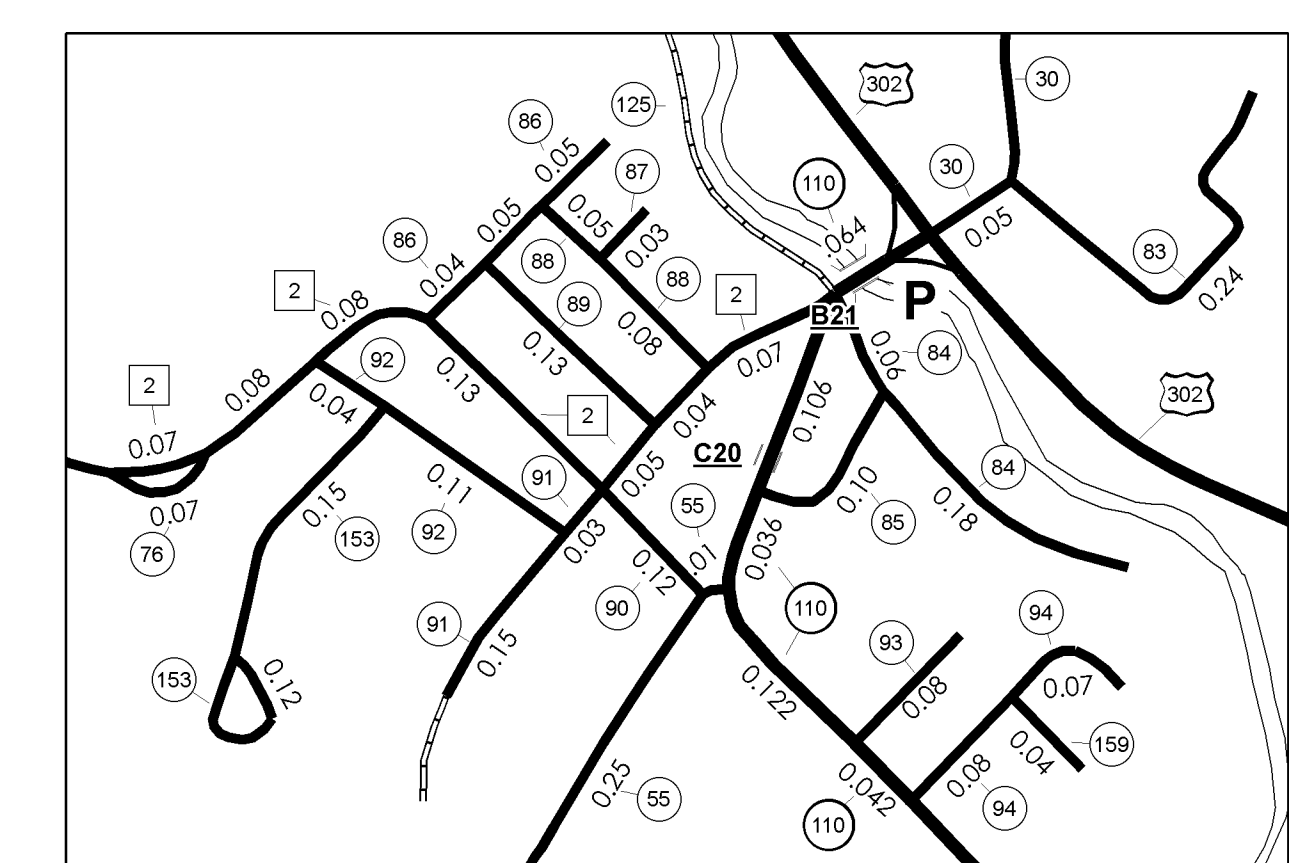
(Excludes Class 4 and Legal Trail Mileage)

- HIGHWAYS**
- INTERSTATE
 - U.S. ROUTE
 - STATE ROUTE
 - CLASS 1
 - CLASS 2
 - CLASS 3
 - CLASS 4
 - LEGAL TRAIL
 - INTERSTATE OR DIVIDED HIGHWAY
 - STATE - HARD SURFACE OR PAVED
 - TOWN - HARD SURFACE OR PAVED
 - GRAVEL
 - SOIL OR GRADED AND DRAINED EARTH
 - UNIMPROVED OR PRIMITIVE
 - IMPASSABLE OR UNTRAVELED
 - LEGAL TRAIL
 - DISCONTINUED
 - HIGHWAY CLASS CHANGE
 - RAILROAD
 - P PARK AND RIDE
- PUBLIC LAND**
- POLITICAL SUBDIVISIONS
 - STATE BOUNDARY
 - COUNTY BOUNDARY
 - TOWN BOUNDARY
 - VILLAGE BOUNDARY
 - URBAN COMPACT
 - OPEN WATER
 - STREAM OR BROOK
 - BRIDGE OR CULVERT
 - BRIDGE OR CULVERT GREATER THAN 20'
 - BRIDGE OR CULVERT 6' - 20'
- B34 / C34 STATE BRIDGE OR CULVERT IDENTIFIER**
- B34 / C34 TOWN BRIDGE OR CULVERT IDENTIFIER**
- FEDERAL CLASSIFICATION IDENTIFIER**
- FAU URBAN ARTERIAL OR COLLECTOR
 - MA MINOR ARTERIAL
 - MJC MAJOR COLLECTOR
 - MNC MINOR COLLECTOR
 - PA PRINCIPAL ARTERIAL

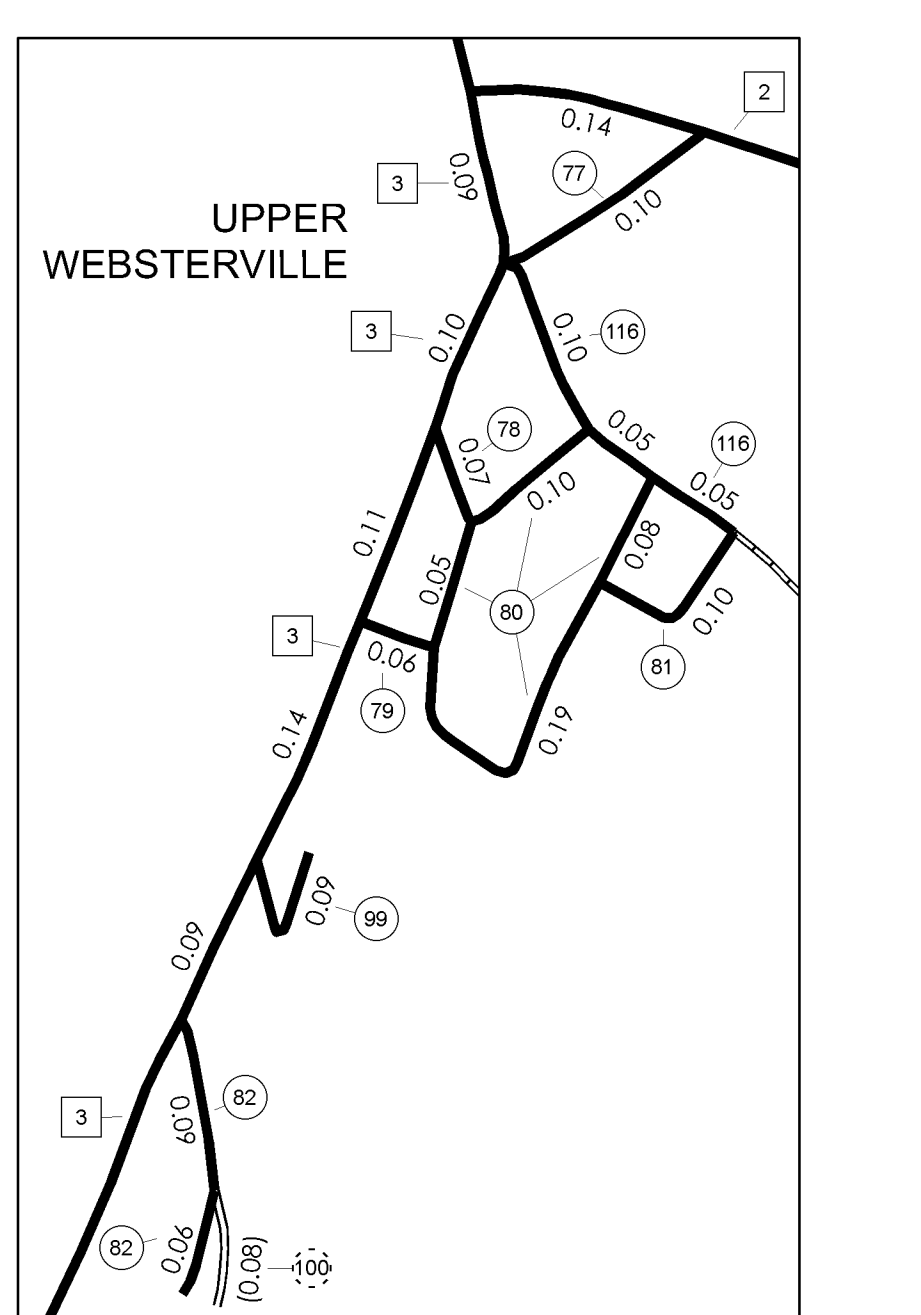
DISCLAIMER:
 The untraveled highways (laid-out town highways), discontinued highways, and legal trails shown hereon are those of which the Agency of Transportation has record; others may exist.
 Highway and bridge data by the Agency of Transportation, Policy & Planning Division. All other data from the Vermont Center for Geographic Information. The surface waters are from the Vermont Hydrological Dataset (VHD). Only the named streams are shown.



INSET 1
RICHARDSON ROAD AREA

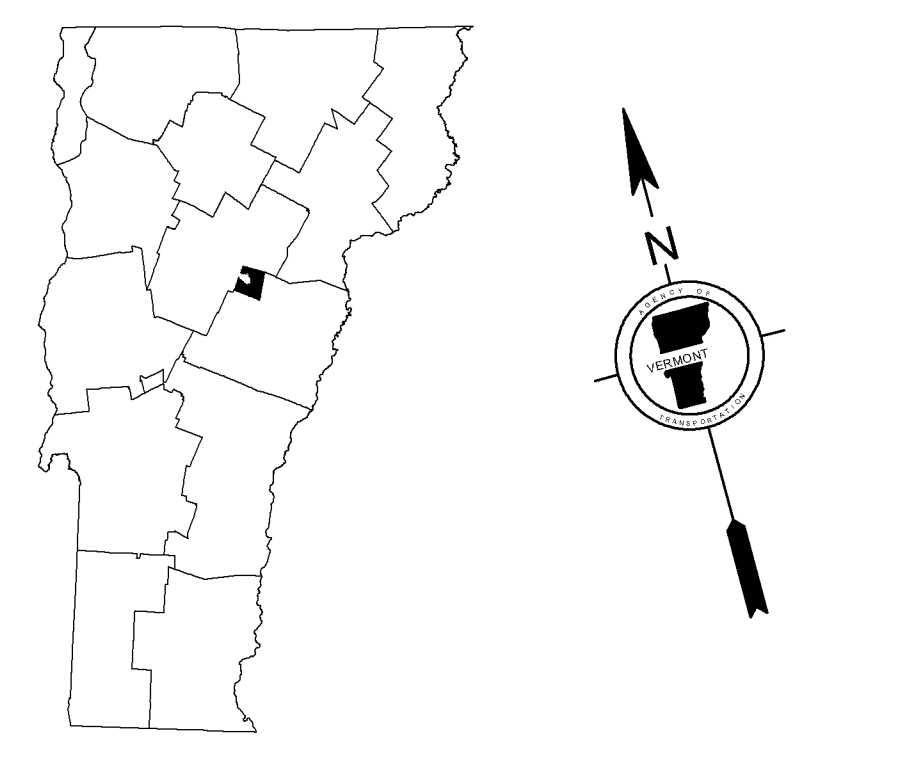


INSET 3
EAST BARRE



INSET 4
UPPER WEBSTERVILLE

SCALE FOR INSETS 1:5336
 0 0.1 0.2 Miles



VERMONT GENERAL HIGHWAY MAP
Town of Barre
 WASHINGTON COUNTY

Transportation District #6
 Prepared by the Vermont Agency of Transportation Policy & Planning Division in cooperation with U.S. Department of Transportation Federal Highway Administration

Mileage as of February 10, 2008
 Map generated: September, 2008

