

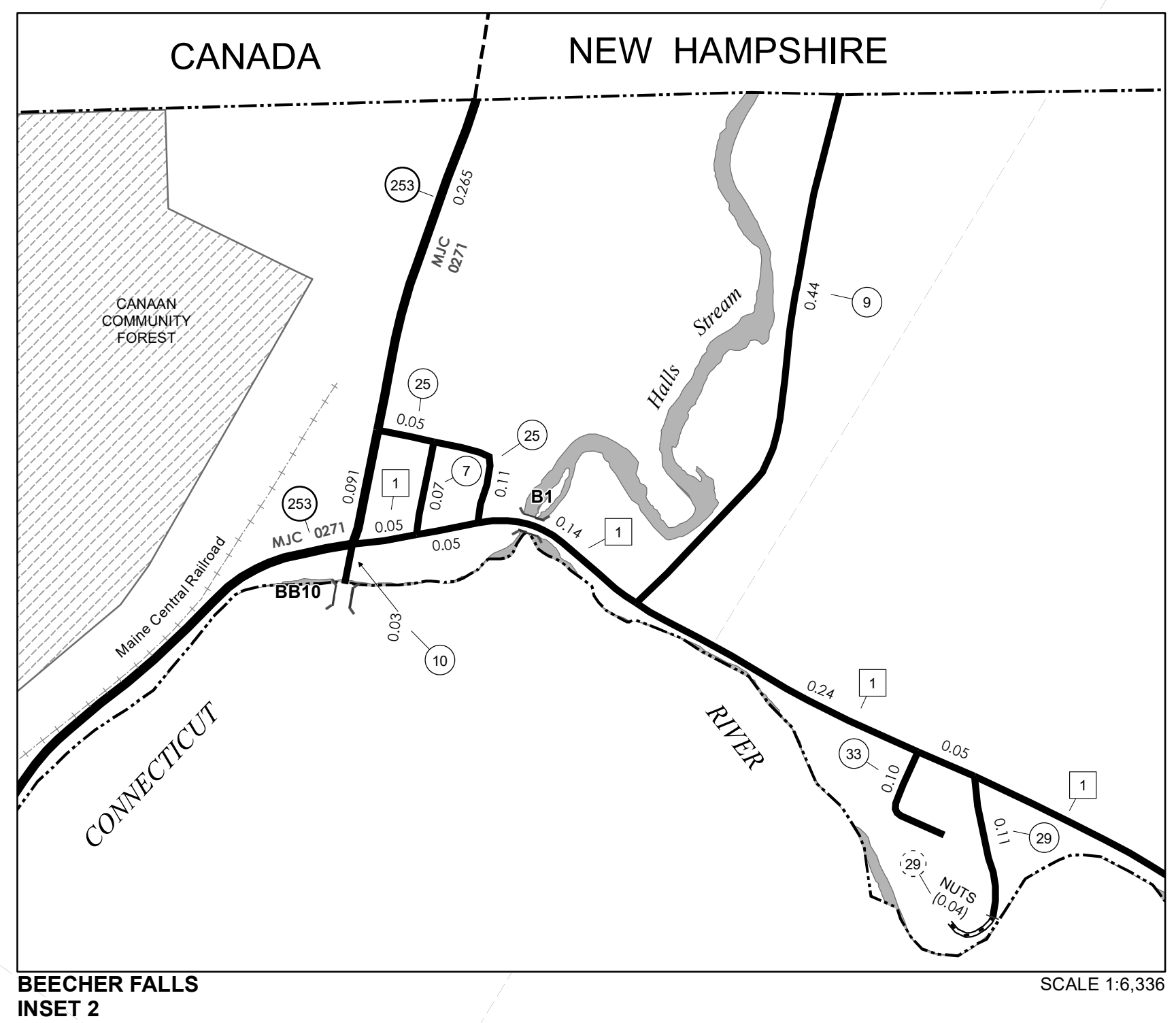
TOWN HWY. No.	LENGTH IN MILES CLASS 3	LENGTH IN MILES CLASS 4
3	0.90	(2.00)
4	0.36	(0.08)
5	0.90	
6	0.90	
7	0.07	
8	1.34	(0.93)
9	0.44	
10	0.03	
11	0.50	
12	1.30	(1.40)
14	0.48	(0.48)
15	3.76	(0.61)
16	1.37	(1.76)
17	1.37	(0.83)
18	0.45	
19	1.57	(2.45)
20	0.10	(0.10)
21	0.06	
22	0.17	
23	0.07	
24	0.16	
25	0.04	
26	0.06	
27	0.10	
28	0.11	
29	0.18	
31	0.05	
32	0.10	
33	0.20	
34	0.07	
35	0.10	
36	0.04	
37	0.20	
38	0.04	
TOTAL	15.23	10.64

TOWN HWY. No.	LENGTH IN MILES "NOT UP TO STANDARD"
8	(0.07)
29	(0.04)
TOTAL	0.11

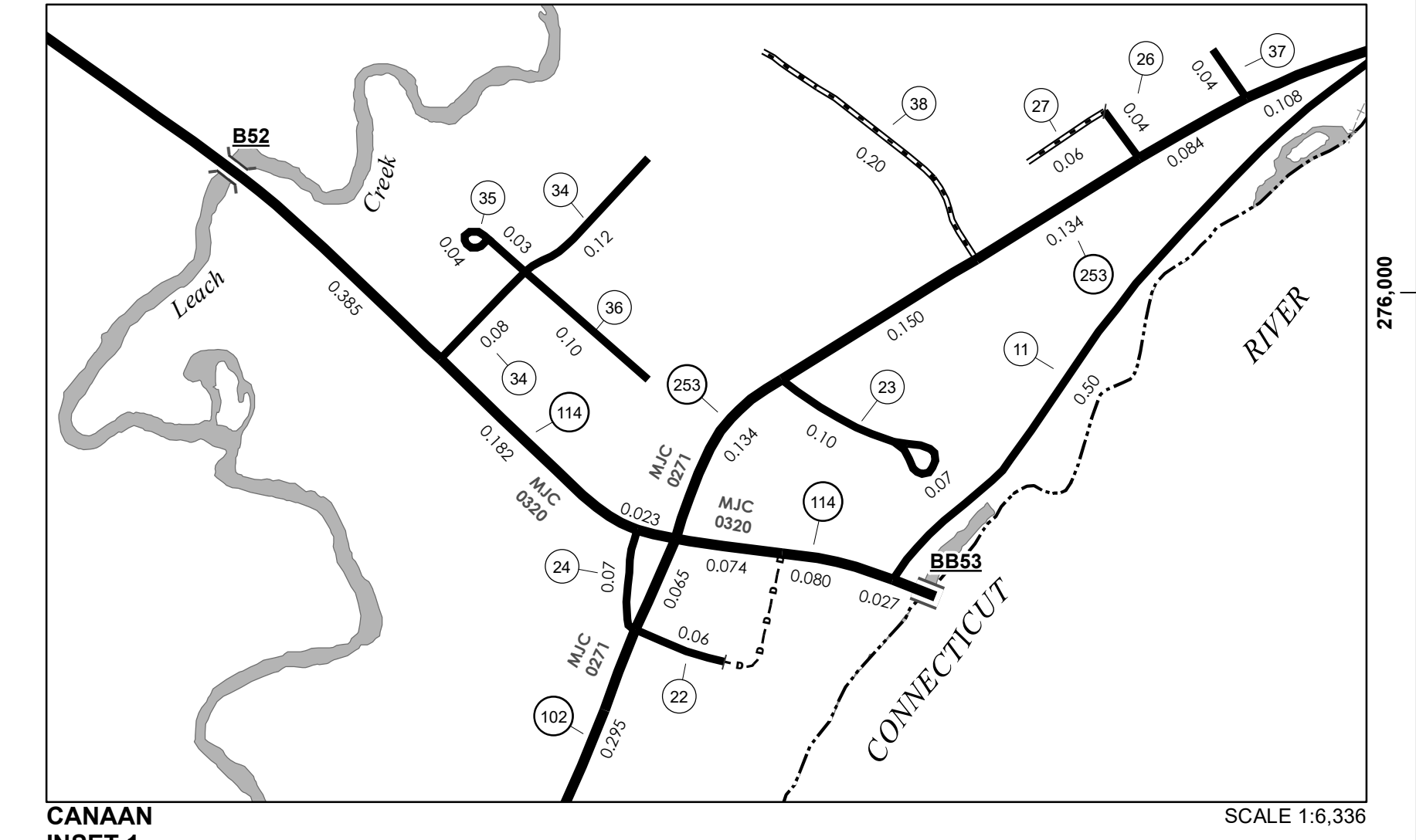
* The sections of the town highways listed above are legally Class 3, but have been deemed "Not Up To Standard" and are functionally Class 4 Town Highways

MILEAGE SUMMARY		
CLASS 2	TH-1	2.350
	TOTAL CLASS 2	2.350
CLASS 3	TOTAL CLASS 3	15.23
	TOTAL TOWN	17.580
STATE HIGHWAY		
VT-102	6.830	
VT-114	8.358	
VT-141	0.457	
VT-253	2.159	
TOTAL STATE HIGHWAY	17.804	
STATE HIGHWAY - Ramps		
VT-141	0.036	
TOTAL STATE HIGHWAY - Ramps	0.036	
TOTAL STATE	17.840	
TOTAL, TRAVELED HIGHWAYS, FEB. 10, 2024:	35.420	

(Excludes Class 4 and Legal Trail Mileage)



BEECHER FALLS INSET 2 SCALE 1:6,336



CANAAN INSET 1 SCALE 1:6,336

- HIGHWAYS**
 - INTERSTATE
 - U.S. ROUTE
 - STATE ROUTE
 - CLASS 1
 - CLASS 2
 - CLASS 3
 - CLASS 4
 - LEGAL TRAIL
 - PARK AND RIDE
- INTERSTATE OR DIVIDED HIGHWAY
- STATE - HARD SURFACE OR PAVED
- TOWN - HARD SURFACE OR PAVED
- GRAVEL
- SOIL OR GRADED AND DRAINED EARTH
- UNIMPROVED OR PRIMITIVE
- IMPASSABLE OR UNTRAVELED
- LEGAL TRAIL
- DISCONTINUED
- HIGHWAY CLASS CHANGE
- RAILROAD
- INACTIVE RAILROAD
- PUBLIC LAND - NATIONAL FOREST
- PUBLIC LAND - STATE/MUNICIPAL
- NFR NATIONAL FOREST ROAD
- ACE ARMY CORPS OF ENGINEERS
- USGH UNITED STATES GOV. HWY.

- POLITICAL SUBDIVISIONS**
 - STATE BOUNDARY
 - COUNTY BOUNDARY
 - TOWN BOUNDARY
 - VILLAGE BOUNDARY
 - URBAN COMPACT BOUNDARY
 - WATER BODY
 - STREAM OR BROOK
- BRIDGE OR CULVERT**
 - BRIDGE OR CULVERT > 20'
 - BRIDGE OR CULVERT 6' - 20'
 - BIKE PATH STRUCTURE
 - VT CULVERTS BRIDGE
 - VT CULVERTS CULVERT > 6'
- FEDERAL CLASSIFICATION IDENTIFIER**
 - MA MINOR ARTERIAL
 - MJC MAJOR COLLECTOR
 - MNC MINOR COLLECTOR
 - PA PRINCIPAL ARTERIAL
- B34 / C34** STATE BRIDGE OR CULVERT IDENTIFIER
- B34 / C34** TOWN BRIDGE OR CULVERT IDENTIFIER

Vermont State Plane Coordinate System
 North American Datum of 1983
 SPCS_Zone_Identifier: 4400
 Geodetic Reference System 80
 4,000-meter grid, Easting - Northing

DISCLAIMER:
 The untraveled highways (laid-out town highways), discontinued highways, and legal trails hereon are those of which the Agency of Transportation has record; others may exist.
 Highway and bridge data by the Agency of Transportation. Town short structures drawn from the VTCULVERTS (formerly VOBCT) online database. All other data from the Vermont Open Geodata Portal. Only named streams shown.

VERMONT
GENERAL HIGHWAY MAP
Town of Canaan
 ESSEX COUNTY
 Transportation District #9
 Prepared by the
 Vermont Agency of Transportation
 Division of Policy, Planning and Intermodal Development
 in cooperation with
 U.S. Department of Transportation
 Federal Highway Administration
 Mileage as of February 10, 2024
 Map prepared July 16, 2024
 SCALE 1:31,680