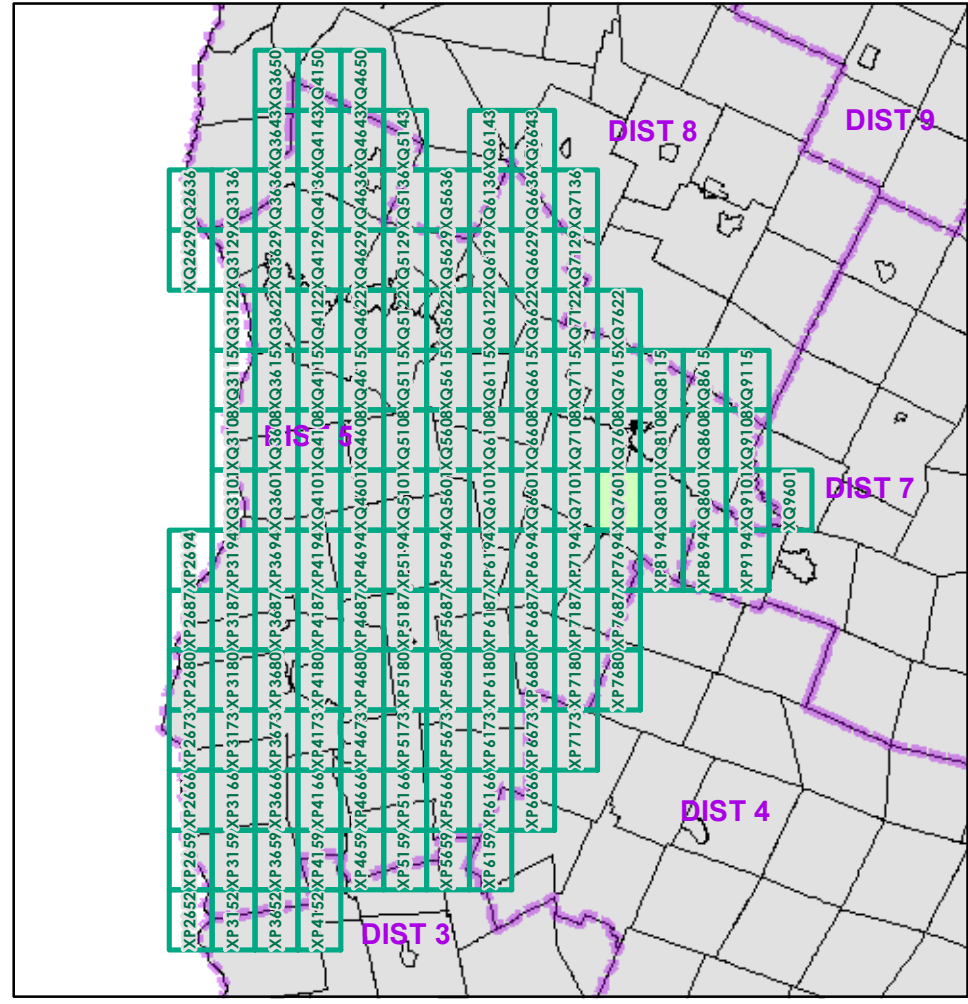


- |   |   |  |
|---|---|--|
| <ul style="list-style-type: none"> <li><span style="color: green;">—</span> Interstate</li> <li><span style="color: red;">—</span> Interstate Ramp</li> <li><span style="color: red;">—</span> Divided U.S. Highway</li> <li><span style="color: red;">—</span> U.S. Highway Ramp</li> <li><span style="color: red;">—</span> U.S. Highway</li> <li><span style="color: green;">—</span> State Highway - Paved</li> <li><span style="color: green;">—</span> State Highway - Gravel</li> <li><span style="color: green;">—</span> State Highway Ramp - Paved</li> <li><span style="color: black;">—</span> Class 1 - Paved</li> <li><span style="color: black;">—</span> Class 2 - Paved</li> <li><span style="color: black;">—</span> Class 2 - Gravel</li> <li><span style="color: black;">—</span> Class 2 - Graded Earth</li> <li><span style="color: black;">—</span> Class 3 - Paved</li> <li><span style="color: black;">—</span> Class 3 - Gravel</li> <li><span style="color: black;">—</span> Class 3 - Graded Earth</li> <li><span style="color: black;">—</span> Class 3 - Unimproved / Primitive</li> <li><span style="color: black;">—</span> Class 4 - Paved</li> <li><span style="color: black;">—</span> Class 4 - Gravel</li> <li><span style="color: black;">—</span> Class 4 - Graded Earth</li> <li><span style="color: black;">—</span> Class 4 - Unimproved / Primitive</li> <li><span style="color: black;">—</span> Class 4 - Impassable or Untraveled</li> <li><span style="color: black;">—</span> National or State Forest Highway</li> <li><span style="color: black;">—</span> Legal Trail</li> <li><span style="color: black;">—</span> Unconfirmed Legal Trail</li> <li><span style="color: black;">—</span> Private</li> <li><span style="color: black;">—</span> Discontinued</li> <li><span style="color: red;">—</span> Proposed Highway</li> </ul> | <p><b>Functional Class</b></p> <ul style="list-style-type: none"> <li><span style="color: orange;">—</span> 2 - Principal Arterial - Other Freeways and Expressways</li> <li><span style="color: orange;">—</span> 3 - Principal Arterial - Other</li> <li><span style="color: orange;">—</span> 4 - Minor Arterial</li> <li><span style="color: orange;">—</span> 5 - Major Collector</li> <li><span style="color: orange;">—</span> 6 - Minor Collector</li> </ul> <p><b>Bridge/Culvert</b></p> <ul style="list-style-type: none"> <li><span style="color: black;">■</span> Bridge or Culvert Greater than 20'</li> <li><span style="color: black;">●</span> Bridge or Culvert 6' - 20'</li> <li><span style="color: blue;">▲</span> VOB/CIT Bridge</li> <li><span style="color: blue;">▼</span> VOB/CIT Culvert</li> </ul> <p><b>Railroad</b></p> <ul style="list-style-type: none"> <li><span style="color: black;">—</span> Railroad</li> <li><span style="color: black;">—</span> Inactive Railroad - Rail Trail</li> <li><span style="color: red;">D</span> VTrans District Office</li> <li><span style="color: black;">+</span> Building</li> <li><span style="color: black;">+</span> Cemetery</li> <li><span style="color: black;">+</span> Airport</li> <li><span style="color: blue;">+</span> Named Lake-Pond</li> <li><span style="color: blue;">+</span> Unnamed Lake-Pond</li> <li><span style="color: blue;">+</span> Named River-Stream</li> <li><span style="color: blue;">+</span> Unnamed River-Stream</li> <li><span style="color: black;">+</span> Public Land</li> <li><span style="color: black;">+</span> U.S. National Grid 18T 5x7Tile</li> <li><span style="color: black;">+</span> District Boundary</li> <li><span style="color: black;">+</span> Town Boundary</li> </ul> | <p>1,000 meter US National Grid<br/>North American Datum 1983<br/>Grid Zone Designation: 18T</p> <p>Vermont State Plane Coordinate System<br/>North American Datum of 1983<br/>SPCS_Zone_Identifier: 4400<br/>Geodetic Reference System 80<br/>500-meter grid, Easting - Northing</p> <p>Map generated: 29 October 2015</p> <p>Contact information:<br/>Vermont Agency of Transportation, Mapping Section<br/>1 National Life Drive, Montpelier, VT 05633-5001<br/>Telephone: 802-828-2600</p> <p>This map was funded in part through grants from the Federal Highway Administration, U.S. Department of Transportation. The representation of the authors expressed herein do not necessarily state or reflect those of the U. S. Department of Transportation.</p> |
|---|---|--|

**2.2** Distance along linear referenced Highway (route log measure)

**B20 / C20** State Bridge or Culvert Identifier  
**B20 / C20** Town Bridge or Culvert Identifier



0 0.2 0.4 Miles  
Scale 1:12,672 (printed size: 24 x 36 inches)

**FIELD ASSESSMENT MAP SERIES**  
USNG Page #: **18TXQ7601**  
Sheet ID: **XQ7601**  
District: **5**

**TOWNS INCLUDED ON SHEET**  
Duxbury  
Fayston  
Moretown  
Waitsfield