

- | | |
|--|---|
| <ul style="list-style-type: none"> Interstate Interstate Ramp Divided U.S. Highway U.S. Highway Ramp U.S. Highway State Highway - Paved State Highway - Gravel State Highway Ramp - Paved Class 1 - Paved Class 2 - Paved Class 2 - Gravel Class 2 - Graded Earth Class 3 - Paved Class 3 - Gravel Class 3 - Graded Earth Class 3 - Unimproved / Primitive Class 4 - Paved Class 4 - Gravel Class 4 - Graded Earth Class 4 - Unimproved / Primitive Class 4 - Impassable or Untraveled National or State Forest Highway Legal Trail Unconfirmed Legal Trail Private Discontinued Proposed Highway | <p>Functional Class</p> <ul style="list-style-type: none"> 2 - Principal Arterial - Other Freeways and Expressways 3 - Principal Arterial - Other 4 - Minor Arterial 5 - Major Collector 6 - Minor Collector <p>Bridge/Culvert</p> <ul style="list-style-type: none"> Bridge or Culvert Greater than 20' Bridge or Culvert 6' - 20' VOBCIT Bridge VOBCIT Culvert <p>Railroad</p> <ul style="list-style-type: none"> Railroad Inactive Railroad - Rail Trail VTrans District Office Building Cemetery Airport Named Lake-Pond Unnamed Lake-Pond Named River-Stream Unnamed River-Stream Public Land U.S. National Grid 18T 5x7Tile District Boundary Town Boundary |
|--|---|

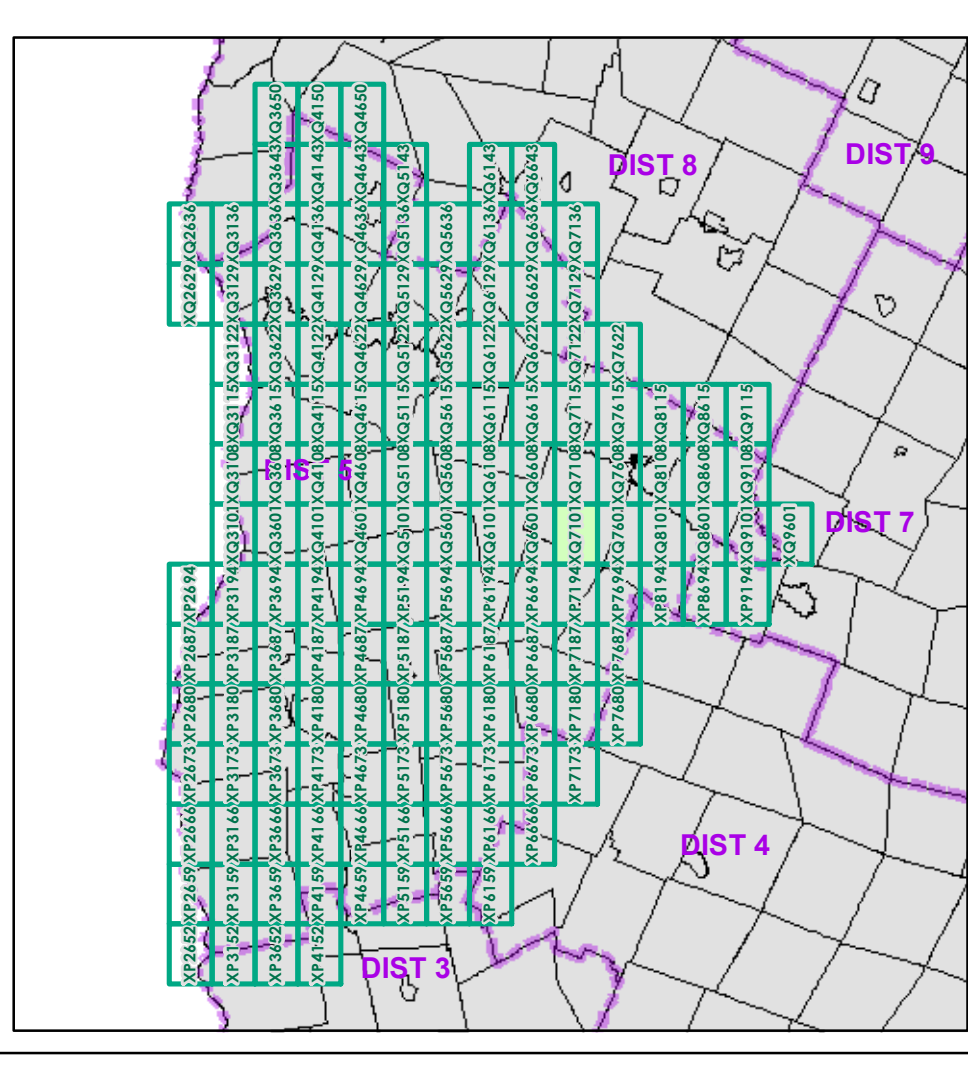
1,000 meter US National Grid
 North American Datum 1983
 Grid Zone Designation: 18T

Vermont State Plane Coordinate System
 North American Datum of 1983
 SPCS_Zone_Identifier: 4400
 Geodetic Reference System 80
 500-meter grid, Easting - Northing

Map generated: 29 October 2015

Contact information:
 Vermont Agency of Transportation, Mapping Section
 1 National Life Drive, Montpelier, VT 05633-5001
 Telephone: 802-828-2600

This map was funded in part through grants from the Federal Highway Administration, U.S. Department of Transportation. The representation of the authors expressed herein do not necessarily state or reflect those of the U. S. Department of Transportation.



0 0.2 0.4 Miles
 Scale 1:12,672 (printed size: 24 x 36 inches)

FIELD ASSESSMENT MAP SERIES
 USNG Page #: 18TXQ7101
 Sheet ID: XQ7101
 District: 5

TOWNS INCLUDED ON SHEET
 Duxbury
 Fayston
 Moretown
 Waitsfield

2.2 Distance along linear referenced Highway (route log measure)
 B20 / C20 State Bridge or Culvert Identifier
 B20 / C20 Town Bridge or Culvert Identifier