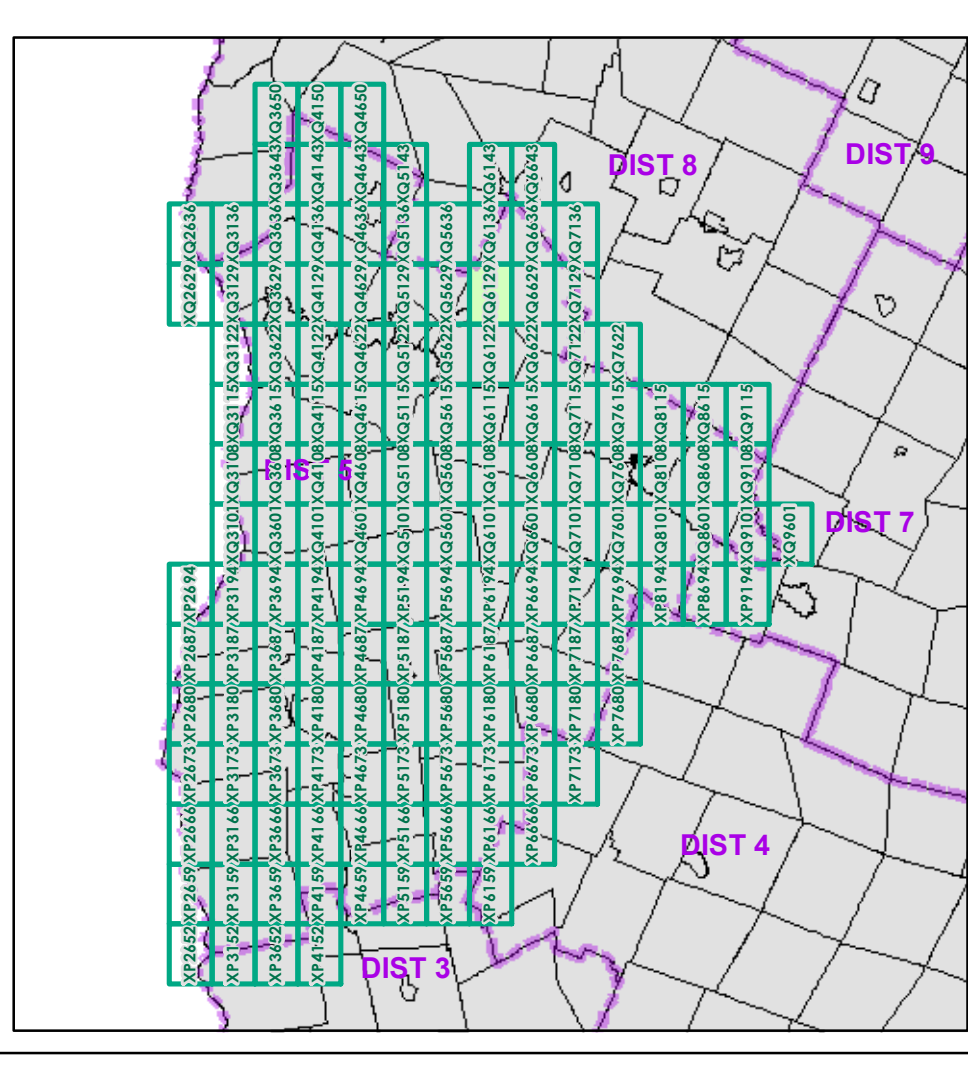


Symbol/Color	Description
Yellow line	Interstate
Orange line	Interstate Ramp
Red line	Divided U.S. Highway
Dark Red line	U.S. Highway Ramp
Red line	U.S. Highway
Green line	State Highway - Paved
Light Green line	State Highway - Gravel
Dark Green line	State Highway Ramp - Paved
Black line	Class 1 - Paved
Dark Grey line	Class 2 - Paved
Light Grey line	Class 2 - Gravel
Dark Grey line	Class 2 - Graded Earth
Light Grey line	Class 3 - Paved
Dark Grey line	Class 3 - Graded Earth
Light Grey line	Class 3 - Unimproved / Primitive
Dark Grey line	Class 4 - Paved
Light Grey line	Class 4 - Graded Earth
Dark Grey line	Class 4 - Unimproved / Primitive
Light Grey line	Class 4 - Impassable or Untraveled
Red dashed line	National or State Forest Highway
Blue dashed line	Legal Trail
Black dashed line	Unconfirmed Legal Trail
Grey dashed line	Private
Black dashed line	Discontinued
Red dashed line	Proposed Highway
Blue line	2 - Principal Arterial - Other Freeways and Expressways
Orange line	3 - Principal Arterial - Other
Green line	4 - Minor Arterial
Light Green line	5 - Major Collector
Dark Green line	6 - Minor Collector
Black square	Bridge or Culvert Greater than 20'
Black circle	Bridge or Culvert 6' - 20'
Blue triangle	VOBCIT Bridge
Black triangle	VOBCIT Culvert
Black line	Railroad
Grey line	Inactive Railroad - Rail Trail
Red square	VTrans District Office
Black square	Building
Black square	Cemetery
Black square	Airport
Blue circle	Named Lake-Pond
Blue circle	Unnamed Lake-Pond
Blue line	Named River-Stream
Blue line	Unnamed River-Stream
Black square	Public Land
Black square	U.S. National Grid 18T5X7Tile
Black square	District Boundary
Black square	Town Boundary

2.2 Distance along linear referenced Highway (route log measure)

B20 / C20 State Bridge or Culvert Identifier  
B20 / C20 Town Bridge or Culvert Identifier



0 0.2 0.4 Miles  
Scale 1:12,672 (printed size: 24 x 36 inches)

**FIELD ASSESSMENT MAP SERIES**  
USNG Page #: **18TXQ6129**  
Sheet ID: **XQ6129**  
District: **5**

**TOWNS INCLUDED ON SHEET**  
Essex  
Jericho Village  
Underhill  
Westford

Map generated: 29 October 2015

Contact information:  
Vermont Agency of Transportation, Mapping Section  
1 National Life Drive, Montpelier, VT 05633-5001  
Telephone: 802-828-2600

This map was funded in part through grants from the Federal Highway Administration, U.S. Department of Transportation. The representation of the authors expressed herein do not necessarily state or reflect those of the U.S. Department of Transportation.