

**Functional Class**

- 2 - Principal Arterial - Other Freeways and Expressways
- 3 - Principal Arterial - Other
- 4 - Minor Arterial
- 5 - Major Collector
- 6 - Minor Collector

**Bridge/Culvert**

- Bridge or Culvert Greater than 20'
- Bridge or Culvert 6' - 20'
- VOCBIT Bridge
- VOCBIT Culvert

**Railroad**

- Railroad
- Inactive Railroad - Rail Trail
- VTrans District Office
- Building
- Cemetery
- Airport
- Named Lake-Pond
- Unnamed Lake-Pond
- Named River-Stream
- Unnamed River-Stream
- Public Land
- U.S. National Grid 18T5X7Tile
- District Boundary
- Town Boundary

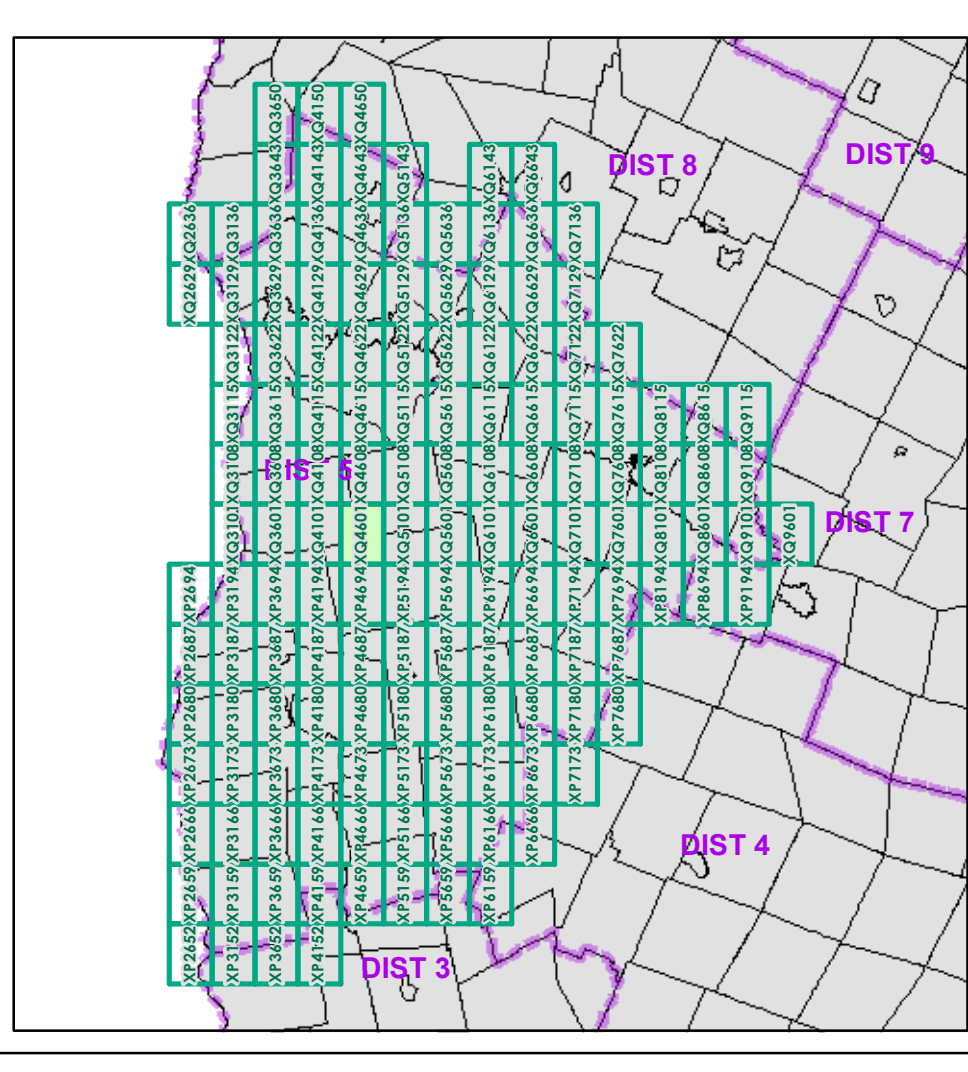
**2.2 Distance along linear referenced Highway (route log measure)**

**B20 / C20 State Bridge or Culvert Identifier**  
**B20 / C20 Town Bridge or Culvert Identifier**

Map generated: 29 October 2015

Contact information:  
 Vermont Agency of Transportation, Mapping Section  
 1 National Life Drive, Montpelier, VT 05633-5001  
 Telephone: 802-828-2600

This map was funded in part through grants from the Federal Highway Administration, U.S. Department of Transportation. The representation of the authors expressed herein do not necessarily state or reflect those of the U.S. Department of Transportation.



0 0.2 0.4 Miles

Scale 1:12,672 (printed size: 24 x 36 inches)

**FIELD ASSESSMENT MAP SERIES**

USNG Page #: **18TXQ4601**

Sheet ID: **XQ4601**

District: **5**

**TOWNS INCLUDED ON SHEET**

Charlotte  
 Hinesburg  
 Monkton