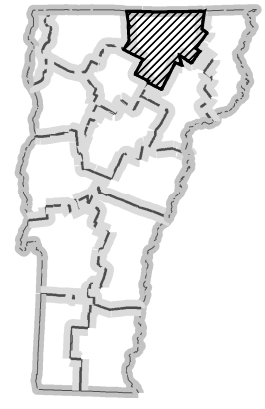
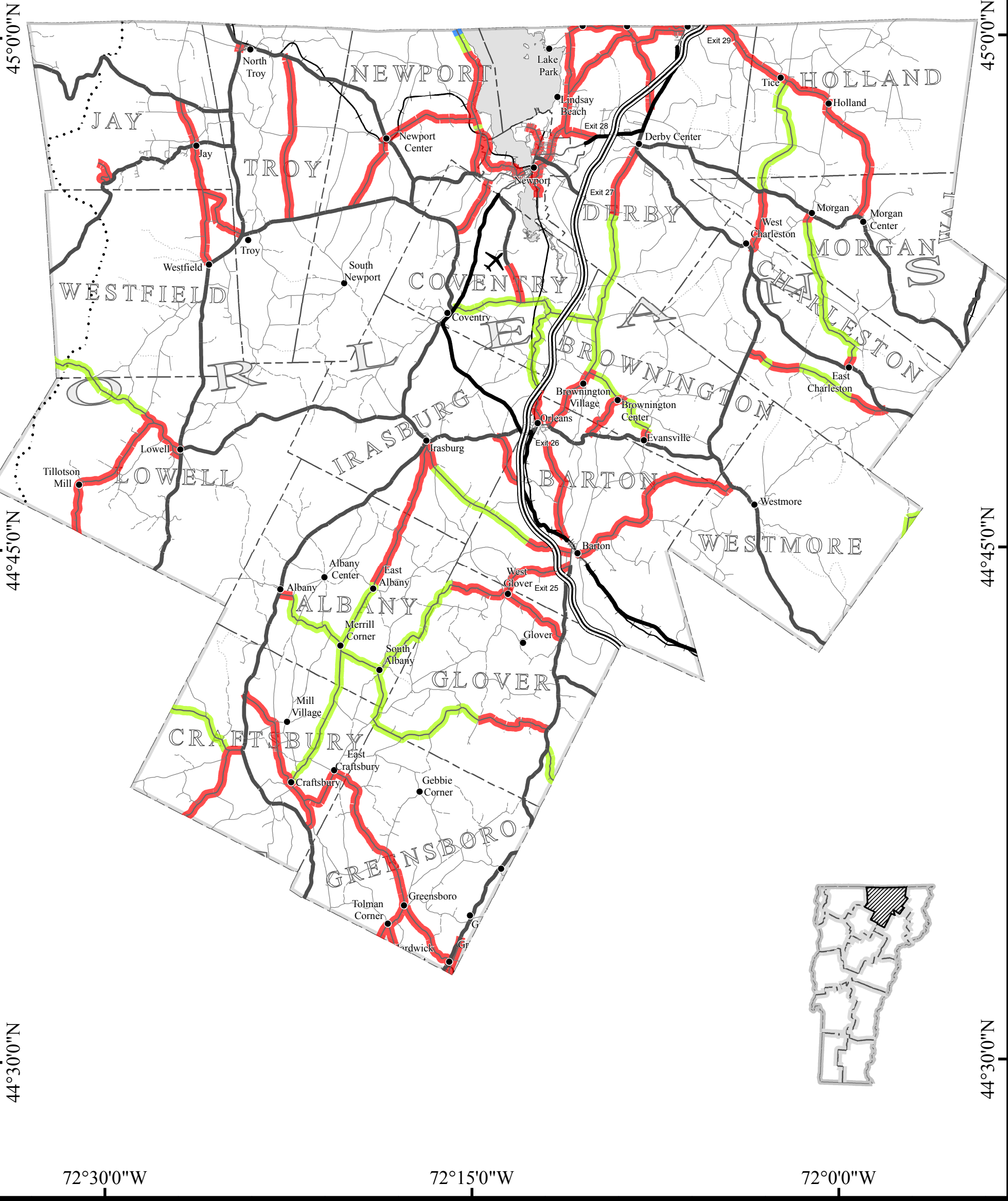


72°30'0"W
Orleans County

72°15'0"W

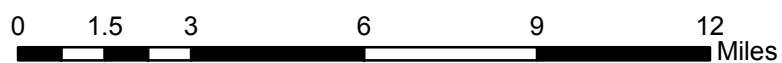
72°0'0"W



CLASS 2 TOWN HIGHWAYS BY SURFACE TYPE

Orleans County

Class 2 Town Highways By Surface SURFACETYPE



- █ Paved
- █ Gravel
- █ Soil or graded and drained earth

1:211,000

VTRANS - MAPPING SECTION - APRIL 22, 2015