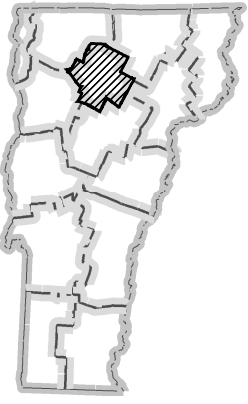
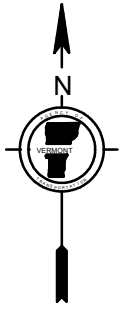


72°45'0"W

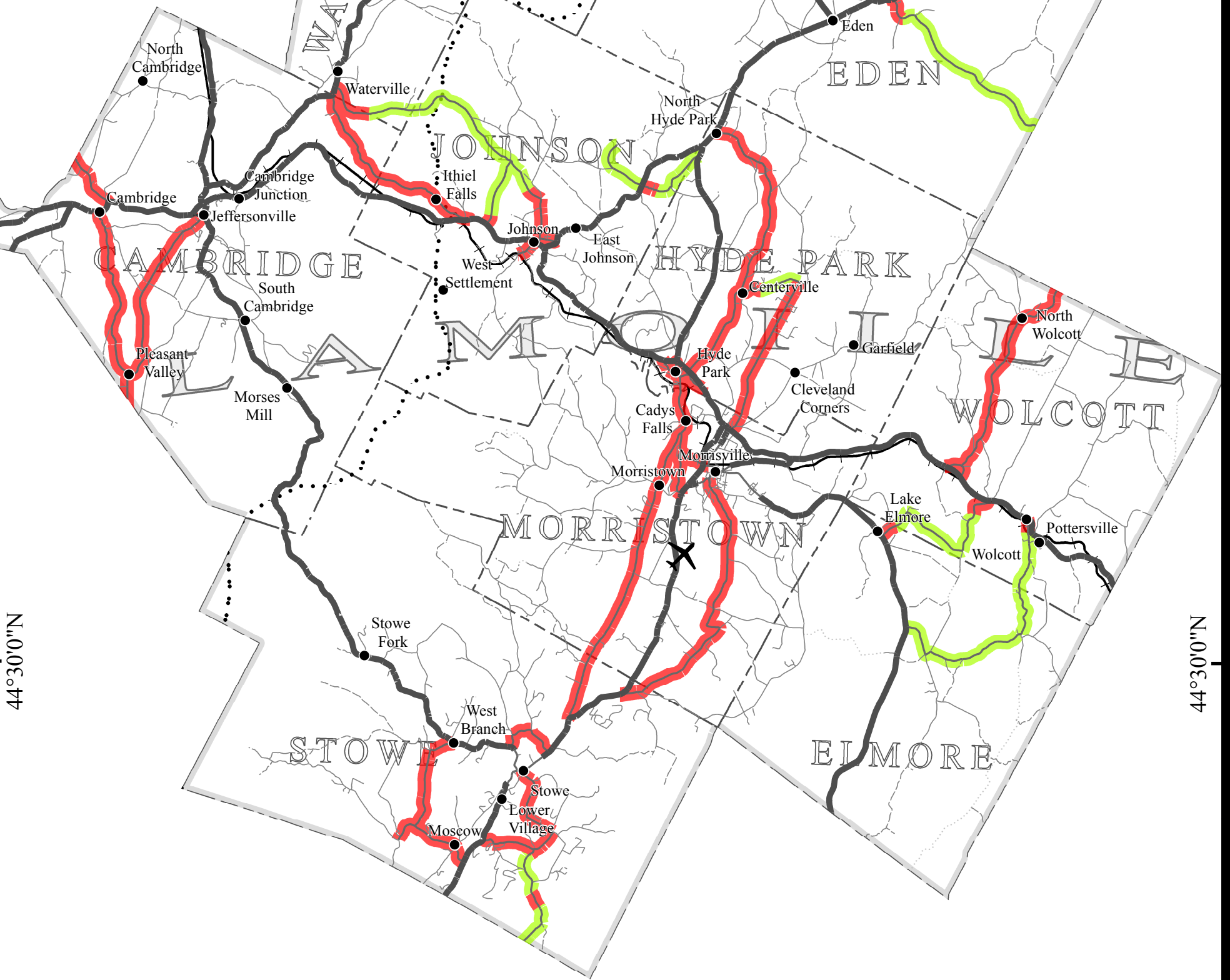
72°30'0"W

Lamoille County



44°45'0"N

44°45'0"N



44°30'0"N

44°30'0"N

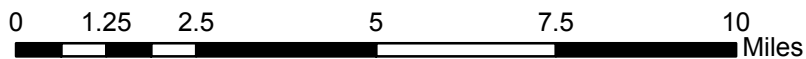
72°45'0"W

72°30'0"W

CLASS 2 TOWN HIGHWAYS BY SURFACE TYPE

Lamoille County

Class 2 Town Highways By Surface SURFACETYPE



- █ Paved
- █ Gravel
- █ Soil or graded and drained earth

1:169,000

VTRANS - MAPPING SECTION - APRIL 22, 2015