

	Interstate
	U.S. Route
	Vermont Route
	Minor Arterial or Collector
	Interstate
	US Route Divided
	US Route
	State Route Paved
	State Route Unpaved
	Town Highway Paved
	Town Highway Unpaved
	Unimproved or Impassible
	Discontinued Highway
	Town Legal Trail
	Winter Road Closure
	Railroad

	Federal Aid Route
	Principal Arterial
	Minor Arterial
	Major Collector
	Minor Collector-not Federal Aid eligible

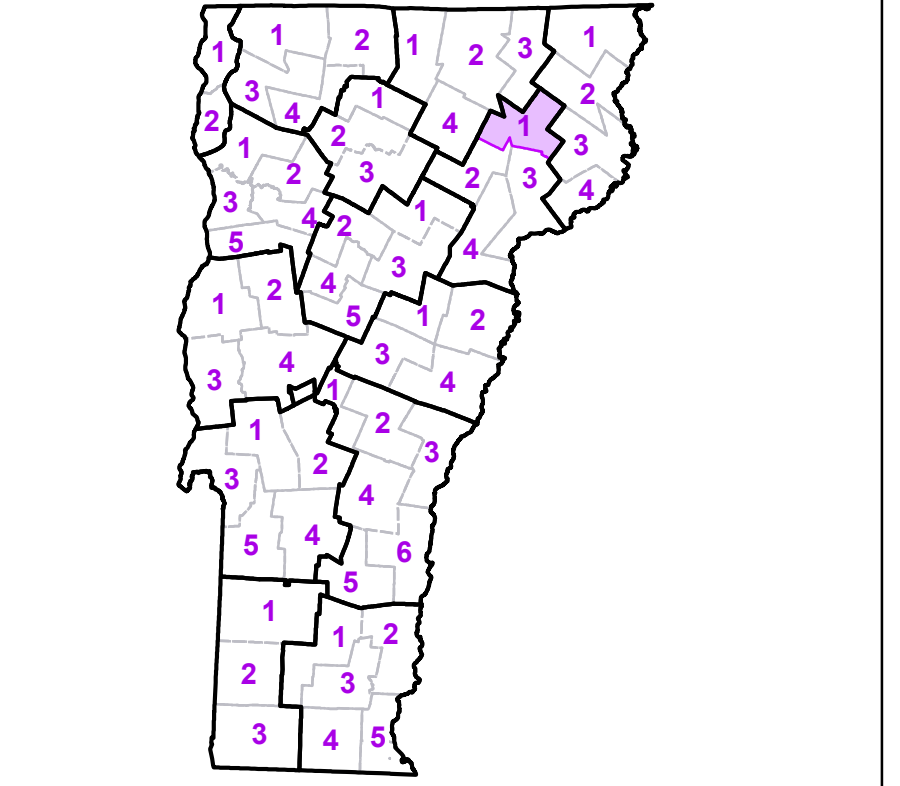
	VTrans Maintenance District Office
	Emergency Response Site
	Fire Station
	Law Enforcement
	Hospital
	Building
	Localities
	State Capital (Montpelier)
	Bridge or Culvert
	Water Body
	Stream or Brook
	Public Airport

	State Boundary
	County Boundary
	Town Boundary
	Village Boundary
	Urban Compact Boundary
	Public Land - State/Municipal
	Green Mountain National Forest
	County Subtitle

TOWN	
Albany	
Barton	
Barton Village	
Bloomfield	
Brighton	
Brownington	
Brunswick	
Burke	
Charleston	
Concord	
Craftsbury	
Danville	
East Haven	
Ferdinand	
Glover	
Granby	
Greensboro	
Hardwick	
Irasburg	
Island Pond U.C.	
Kirby	
Lewis	
Lunenburg	
Lyndon	
Lyndonville Village	
Newark	
Orleans Village	
Sheffield	
St. Johnsbury	
Stannard	
Sutton	
Victory	
Walden	
West Burke Village	
Westmore	
Wheelock	

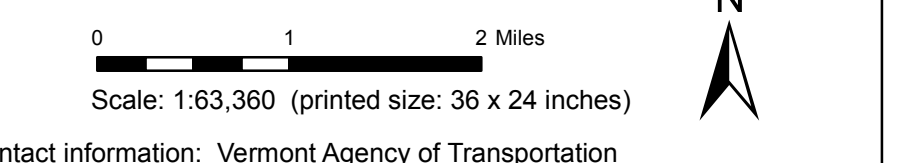
B20 / C20 State Bridge or Culvert Identifier
 B20 / C20 Town Bridge or Culvert Identifier

Vermont State Plane Coordinate System
 North American Datum of 1983
 SPCS_Zone_Identifier: 4400
 Geodetic Reference System 80
 5,000-meter grid, Easting - Northing

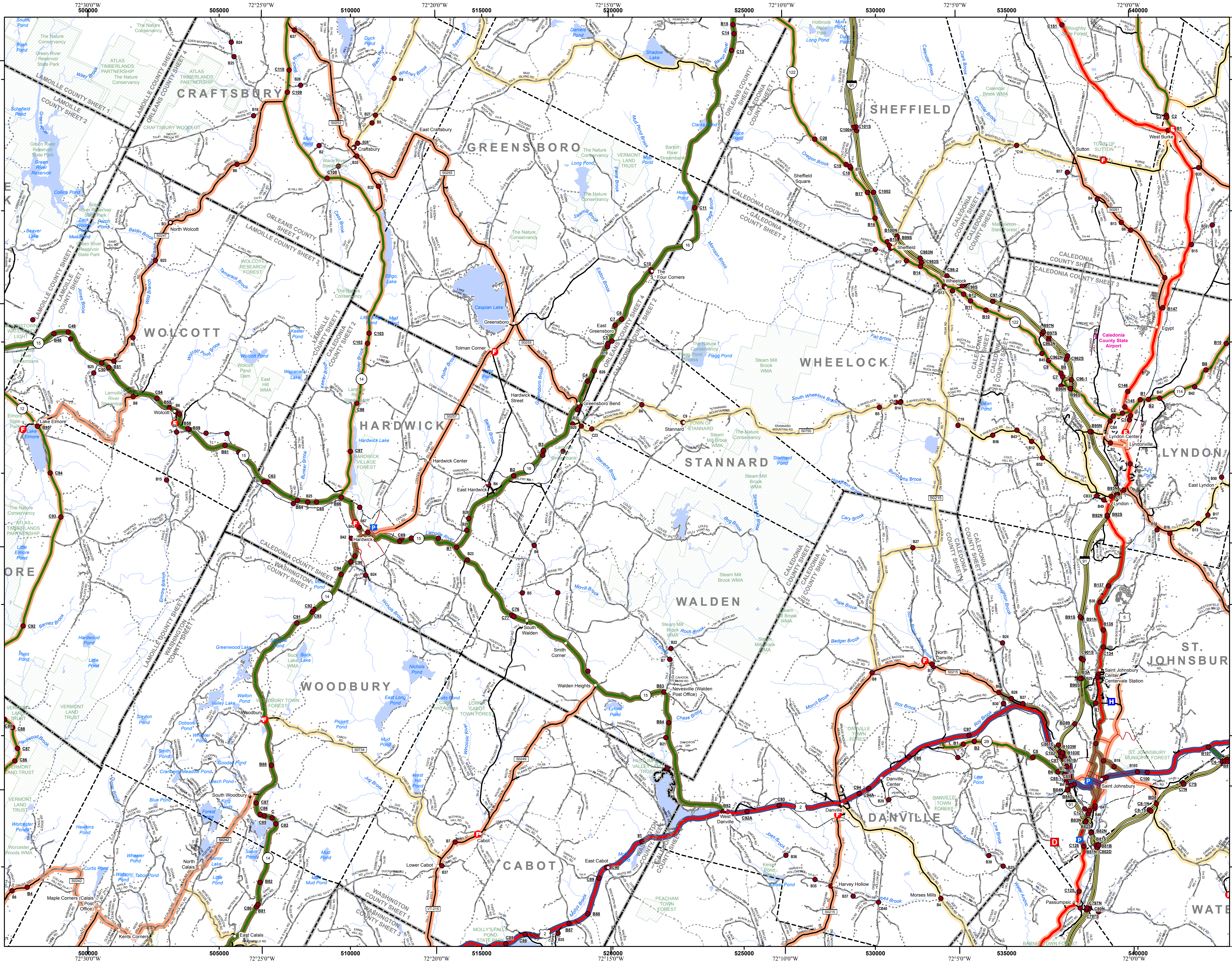


VERMONT COUNTY - TOWN MAP SERIES
CALEDONIA COUNTY SHEET 1 OF 4

Prepared by the Vermont Agency of Transportation Mapping Section
 in cooperation with U.S. Department of Transportation Federal Highway Administration
 October 2017



Contact information: Vermont Agency of Transportation
 Division of Policy, Planning and Intermodal Development, Mapping Section
 1 National Life Drive, Montpelier, VT 05633-5001
 Telephone: 802-828-2600
 This map was funded in part through grants from the Federal Highway Administration, U.S. Department of Transportation. The representation of the authors expressed herein do not necessarily state or reflect those of the U.S. Department of Transportation.

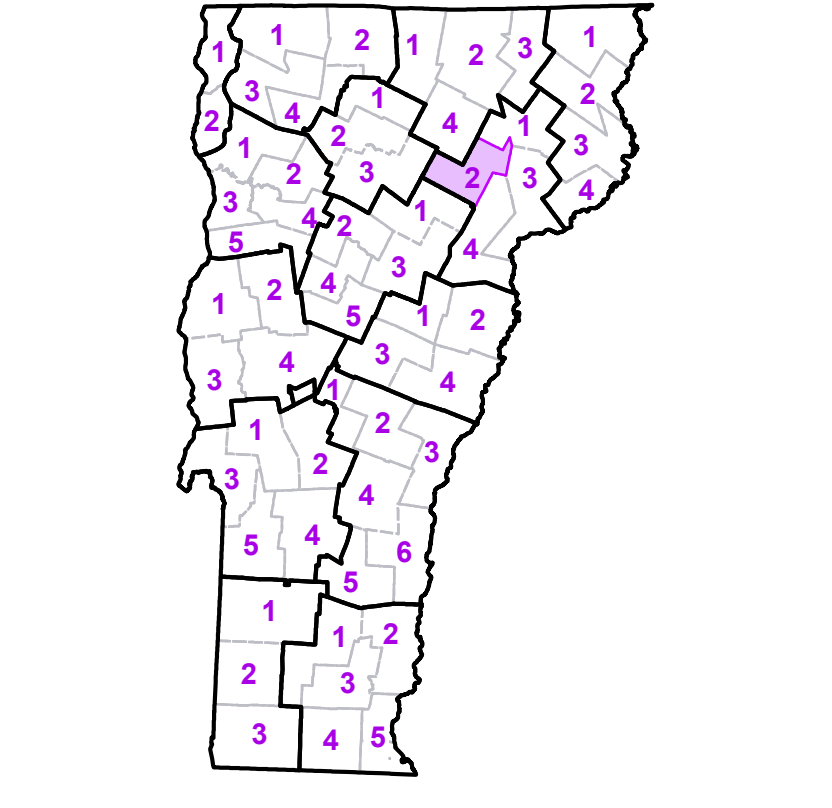


- Interstate
 - U.S. Route
 - Vermont Route
 - Minor Arterial or Collector
 - Interstate
 - US Route Divided
 - US Route
 - State Route Paved
 - State Route Unpaved
 - Town Highway Paved
 - Town Highway Unpaved
 - Unimproved or Impassible
 - Discontinued Highway
 - Town Legal Trail
 - Winter Road Closure
 - Railroad
- Federal Aid Route**
- Principal Arterial
 - Minor Arterial
 - Major Collector
 - Minor Collector-not Federal Aid eligible
- VTrans Maintenance District Office**
- VTrans Maintenance District Office
- Emergency Response Site**
- Fire Station
 - Law Enforcement
 - Hospital
 - Building
 - Localities
 - State Capital (Montpelier)
 - Bridge or Culvert
 - Water Body
 - Stream or Brook
 - Public Airport
- State Boundary
 - County Boundary
 - Town Boundary
 - Village Boundary
 - Urban Compact Boundary
 - Public Land - State/Municipal
 - Green Mountain National Forest
 - County Subtile

TOWN	
Albany	
Barnet	
Burke	
Cabot	
Calais	
Craftsbury	
Danville	
Eden	
Elmore	
Glover	
Greensboro	
Hardwick	
Hardwick U.C.	
Hyde Park	
Kiry	
Lyndon	
Lyndonville Village	
Marshfield	
Morristown	
Newark	
Peacham	
Sheffield	
St. Johnsbury	
St. Johnsbury U.C.	
Stannard	
Sutton	
Walden	
Waterford	
West Burke Village	
Wheelock	
Wolcott	
Woodbury	
Worcester	

B20 / C20 State Bridge or Culvert Identifier
 B20 / C20 Town Bridge or Culvert Identifier

Vermont State Plane Coordinate System
 North American Datum of 1983
 SPCS_Zone_Identifier: 4400
 Geodetic Reference System 80
 5,000-meter grid, Easting - Northing

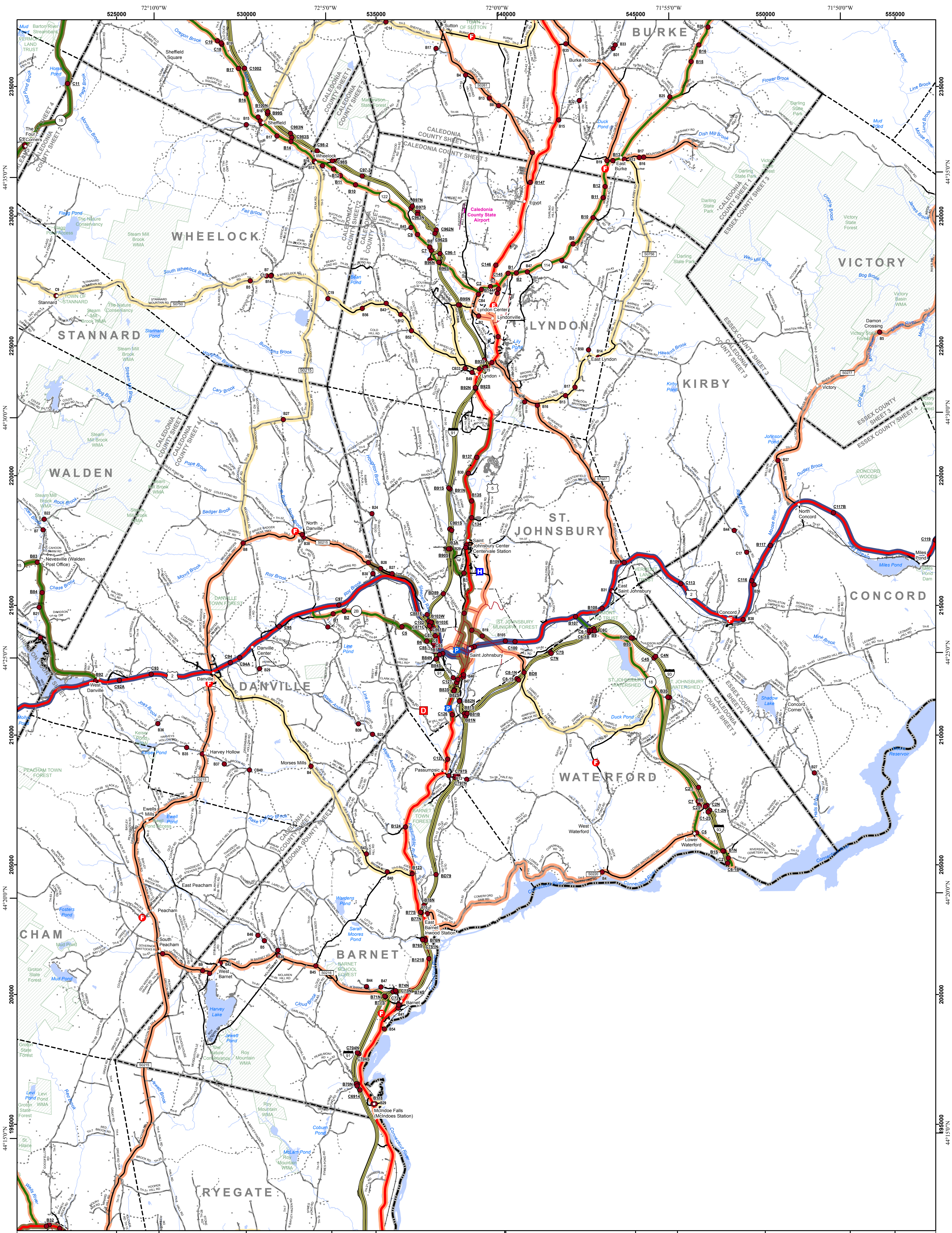


VERMONT COUNTY - TOWN MAP SERIES
CALEDONIA COUNTY
SHEET 2 OF 4

Prepared by the
 Vermont Agency of Transportation
 Mapping Section
 in cooperation with
 U.S. Department of Transportation
 Federal Highway Administration
 October 2017

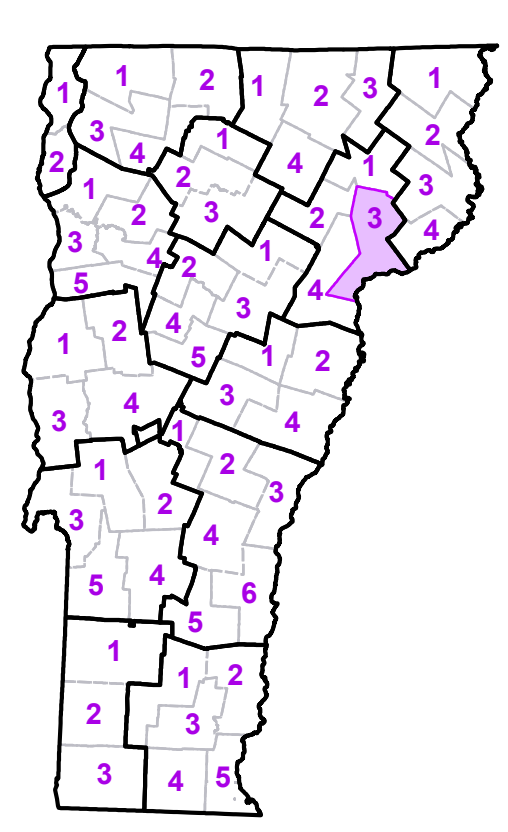
Scale: 1:63,360 (printed size: 36 x 24 inches)

Contact information: Vermont Agency of Transportation
 Division of Policy, Planning and Intermodal Development, Mapping Section
 1 National Life Drive, Montpelier, VT 05633-5001
 Telephone: 802-828-2600
 This map was funded in part through grants from the Federal Highway Administration, U.S. Department of Transportation. The representation of the authors expressed herein do not necessarily state or reflect those of the U. S. Department of Transportation.



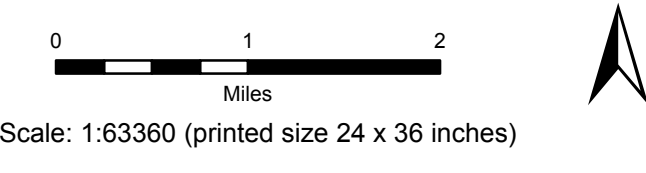
- Interstate
- U.S. Route
- Vermont Route
- Minor Arterial or Collector
- Federal Aid Route Principal Arterial
- Federal Aid Route Minor Arterial
- Federal Aid Route Major Collector
- Federal Aid Route Minor Collector-not Federal Aid eligible
- VTrans Maintenance District Office
- Emergency Response Site Fire Station
- Emergency Response Site Law Enforcement
- Emergency Response Site Hospital
- Emergency Response Site Building
- Emergency Response Site Localities
- Emergency Response Site State Capital (Montpelier)
- Emergency Response Site Bridge or Culvert
- Emergency Response Site Water Body
- Emergency Response Site Stream or Brook
- Emergency Response Site Winter Road Closure
- Railroad
- Political Boundary State Boundary
- Political Boundary County Boundary
- Political Boundary Town Boundary
- Political Boundary Village Boundary
- Political Boundary Urban Compact Boundary
- Political Boundary Public Land - State/Municipal
- Political Boundary Green Mountain National Forest
- Political Boundary County Subtle
- B20 / C20 State Bridge or Culvert Identifier
- B20 / C20 Town Bridge or Culvert Identifier

TOWN	TOWN	TOWN
Barnet	Lunenburg	Waterford
Burke	Lyndon	West Burke Village
Cabot	Lyndonville Village	Wheellock
Concord	Peacham	
Danville	Ryegate	
East Haven	Sheffield	
Glover	St. Johnsbury	
Granby	St. Johnsbury U.C.	
Greensboro	Stannard	
Groton	Sutton	
Groton Village	Victory	
Kirby	Walden	



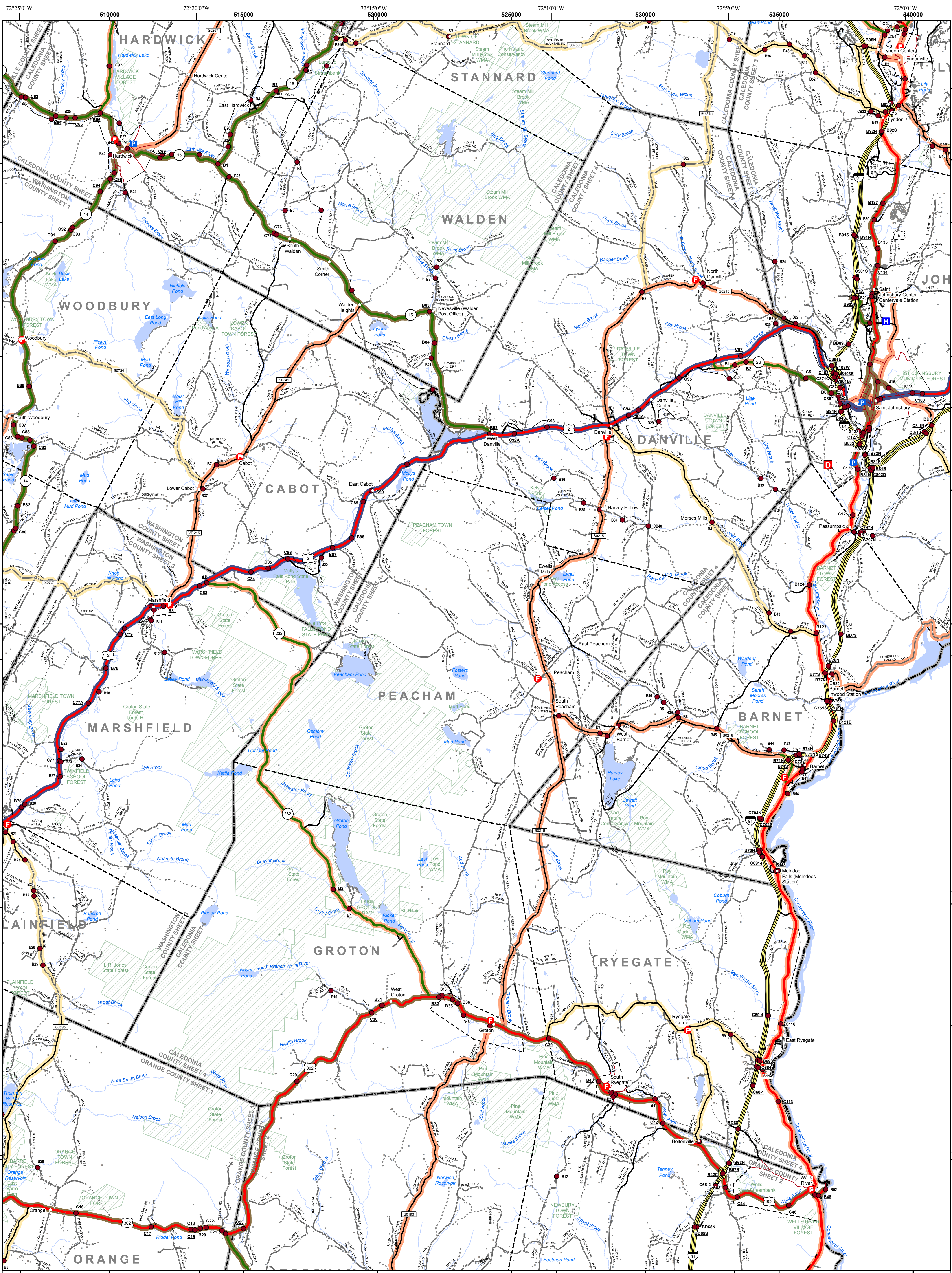
VERMONT COUNTY - TOWN MAP SERIES
CALEDONIA COUNTY
SHEET 3 OF 4

Prepared by the
Vermont Agency of Transportation
 Mapping Section
 in cooperation with
U.S. Department of Transportation
 Federal Highway Administration
 October 2017



Contact Information: Vermont Agency of Transportation
 Division of Policy, Planning and Intermodal Development, Mapping Section
 1 National Life Drive, Montpelier, VT 05633-5001, Telephone: 802-828-2600

This map was funded in part through grants from the Federal Highway Administration, U.S. Department of Transportation. The representation of the authors expressed herein do not necessarily state or reflect those of the U.S. Department of Transportation.



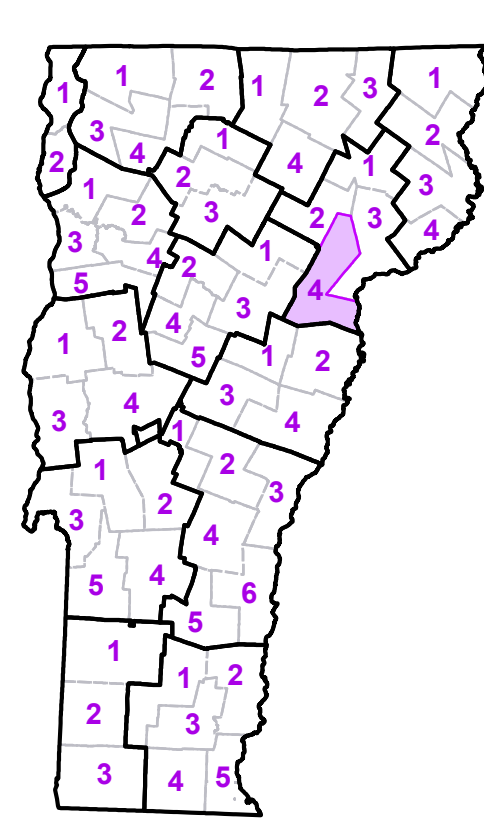
- Interstate
- U.S. Route
- Vermont Route
- Minor Arterial or Collector
- State Route Paved
- State Route Unpaved
- Town Highway Paved
- Town Highway Unpaved
- Unimproved or Impassible
- Discontinued Highway
- Town Legal Trail
- Winter Road Closure
- Railroad

- Federal Aid Route**
- Principal Arterial
- Minor Arterial
- Major Collector
- Minor Collector-not Federal Aid eligible
- VTrans Maintenance District Office
- Fire Station
- Law Enforcement
- Hospital
- Building
- Localities
- State Capital (Montpelier)
- Bridge or Culvert
- Water Body
- Stream or Brook
- Public Airport

- Political Boundary**
 - State Boundary
 - County Boundary
 - Town Boundary
 - Village Boundary
 - Urban Compact Boundary
 - Public Land - State/Municipal
 - Green Mountain National Forest
 - County Subtle
- B20 / C20 State Bridge or Culvert Identifier**
B2 / C20 Town Bridge or Culvert Identifier

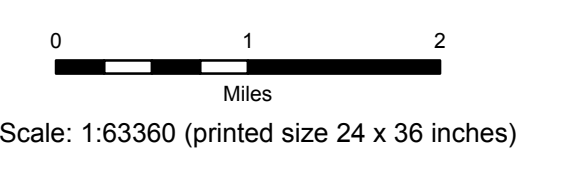
TOWN	TOWN	TOWN
Barnet	Marshfield	Walden
Barre	Marshfield Village	Waterford
Cabot	Newbury	Wells River Village
Calais	Orange	Wheelock
Danville	Peacham	Wolcott
Greenboro	Plainfield	Woodbury
Groton	Ryegate	
Groton Village	South Ryegate Village	
Hardwick	St. Johnsbury	
Hardwick U.C.	St. Johnsbury U.C.	
Lyndon	Stannard	
Lyndonville Village	Topsham	

Vermont State Plane Coordinate System
 North American Datum of 1983
 SPCS Zone Identifier: 4400
 Geocentric Reference System 80
 5,000-meter grid, Easting - Northing



VERMONT COUNTY - TOWN MAP SERIES
CALEDONIA COUNTY
SHEET 4 OF 4

Prepared by the
 Vermont Agency of Transportation
 Mapping Section
 in cooperation with
 U.S. Department of Transportation
 Federal Highway Administration
 October 2017



Contact Information: Vermont Agency of Transportation
 Division of Policy, Planning and Intermodal Development, Mapping Section
 1 National Life Drive, Montpelier, VT 05633-5001, Telephone: 802-828-2600

This map was funded in part through grants from the Federal Highway Administration, U.S. Department of Transportation. The representation of the authors expressed herein do not necessarily state or reflect those of the U.S. Department of Transportation.