

TOWN	
Averill	
Averys Gore	
Bloomfield	
Brighton	
Brunswick	
Canaan	
Charleston	
Holland	
Ferdinand	
Holland	
Island Pond U.C.	
Lemington	
Lewis	
Morgan	
Newark	
Norton	
Warren Gore	
Warren Gore	
Westmore	

- Interstate
- U.S. Route
- Vermont Route
- Minor Arterial or Collector
- Interstate
- US Route Divided
- US Route
- State Route Paved
- State Route Unpaved
- Town Highway Paved
- Town Highway Unpaved
- Unimproved or Impassible
- Town Legal Trail
- Discontinued Highway
- Railroad

Federal Aid Route

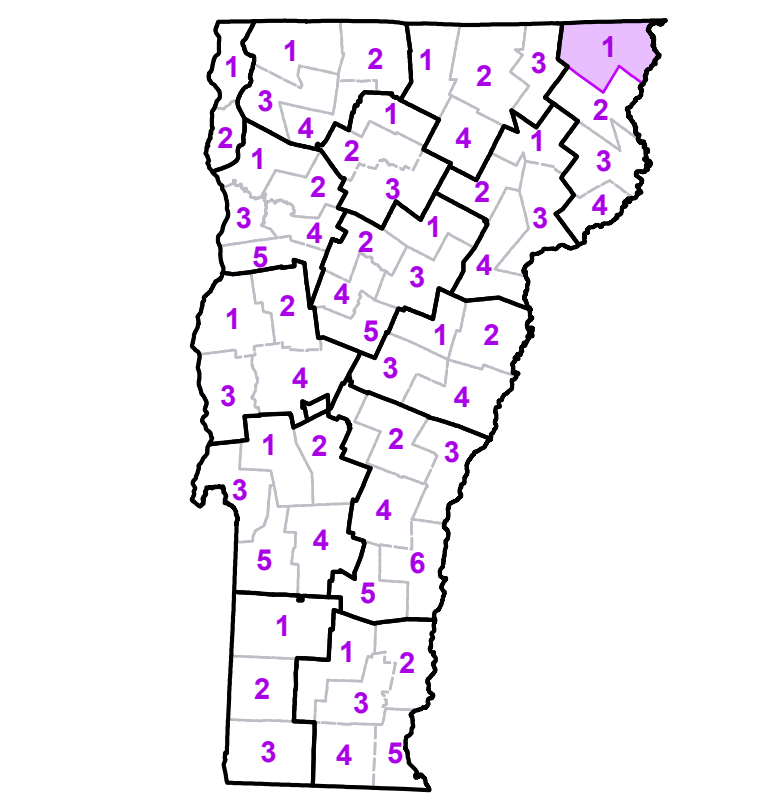
- Principal Arterial
- Minor Arterial
- Major Collector
- Federal Aid Urban
- Minor Collector * (not Federal Aid eligible)

VTrans District Office

Emergency Response Site

- Police Station
- Fire Station
- Hospital
- Cemetery
- Building
- Localities
- State Capital (Montpelier)
- Bridge or Culvert
- Water Body
- Stream or Brook
- Public Land
- Public Airport
- State Boundary
- County Boundary
- Town Boundary
- Village Boundary
- Urban Compact Boundary
- County Subtile
- B20 / C20 State Bridge or Culvert Identifier
- B20 / C20 Town Bridge or Culvert Identifier

Vermont State Plane Coordinate System
 North American Datum of 1983
 SPCS_Zone_Identifier: 4400
 Geodetic Reference System 80
 5,000-meter grid, Easting-Northing



VERMONT COUNTY - TOWN MAP SERIES

ESSEX COUNTY SHEET 1 OF 4

Prepared by the
Vermont Agency of Transportation Mapping Unit
 in cooperation with
U.S. Department of Transportation Federal Highway Administration

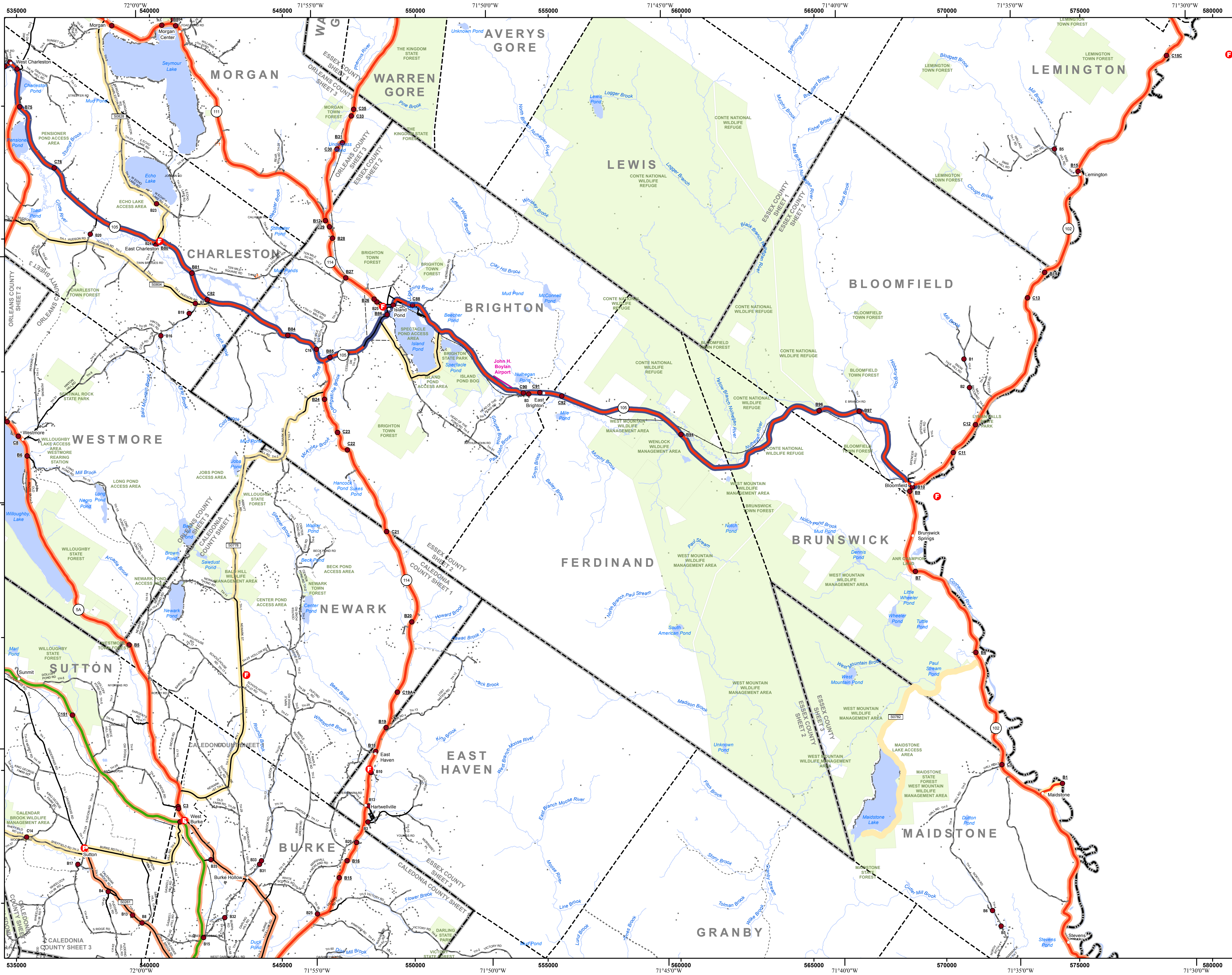
January 2012

0 1 2 Miles

Scale 1:63360 (printed size: 36 x 24 inches)

Contact information: Vermont Agency of Transportation
 Division of Policy, Planning and Intermodal Development, Mapping Unit
 1 National Life Drive, Montpelier, VT 05633-5001
 Telephone: 802-828-2600

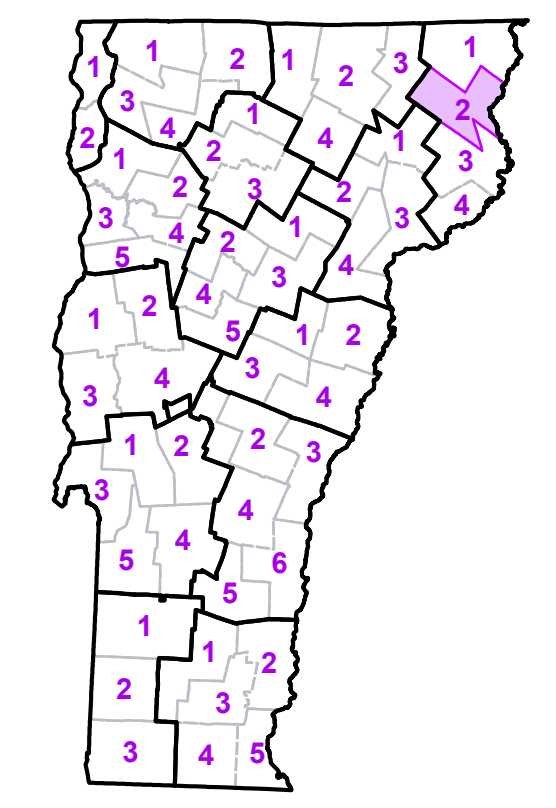
This map was funded in part through grants from the Federal Highway Administration, U.S. Department of Transportation. The representation of the authors expressed herein do not necessarily state or reflect those of the U.S. Department of Transportation.



	Interstate
	U.S. Route
	Vermont Route
	Minor Arterial or Collector
	Interstate
	US Route Divided
	US Route
	State Route Paved
	State Route Unpaved
	Town Highway Paved
	Town Highway Unpaved
	Unimproved or Impassible
	Town Legal Trail
	Discontinued Highway
	Railroad
	Federal Aid Route Principal Arterial
	Minor Arterial
	Major Collector
	Federal Aid Urban
	Minor Collector *
	* not Federal Aid eligible
	VTrans District Office
	Emergency Response Site Police Station
	Fire Station
	Hospital
	Cemetery
	Building
	Localities
	State Capital (Montpelier)
	Bridge or Culvert
	Water Body
	Stream or Brook
	Public Land
	Public Airport
	State Boundary
	County Boundary
	Town Boundary
	Village Boundary
	Urban Compact Boundary
	County Subtle
	B20 / C20 State Bridge or Culvert Identifier
	B20 / C20 Town Bridge or Culvert Identifier

TOWN
Averill
Averys Gore
Bloomfield
Brighton
Brownington
Brunswick
Burke
Canaan
Charleston
East Haven
Ferdinand
Granby
Guildhall
Island Pond U.C.
Lemington
Lewis
Lyndon
Maldstone
Morgan
Newark
Sutton
Victory
Warners Grant
Warren Gore
West Burke Village
Westmore
Wheelock

Vermont State Plane Coordinate System
 North American Datum of 1983
 SPCS_Zone_Identifier: 4400
 Geodetic Reference System 80
 5,000-meter grid, Easting - Northing

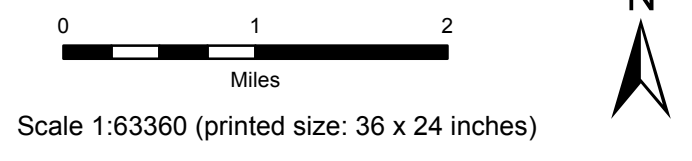


VERMONT
 COUNTY - TOWN MAP SERIES

ESSEX COUNTY
 SHEET 2 OF 4

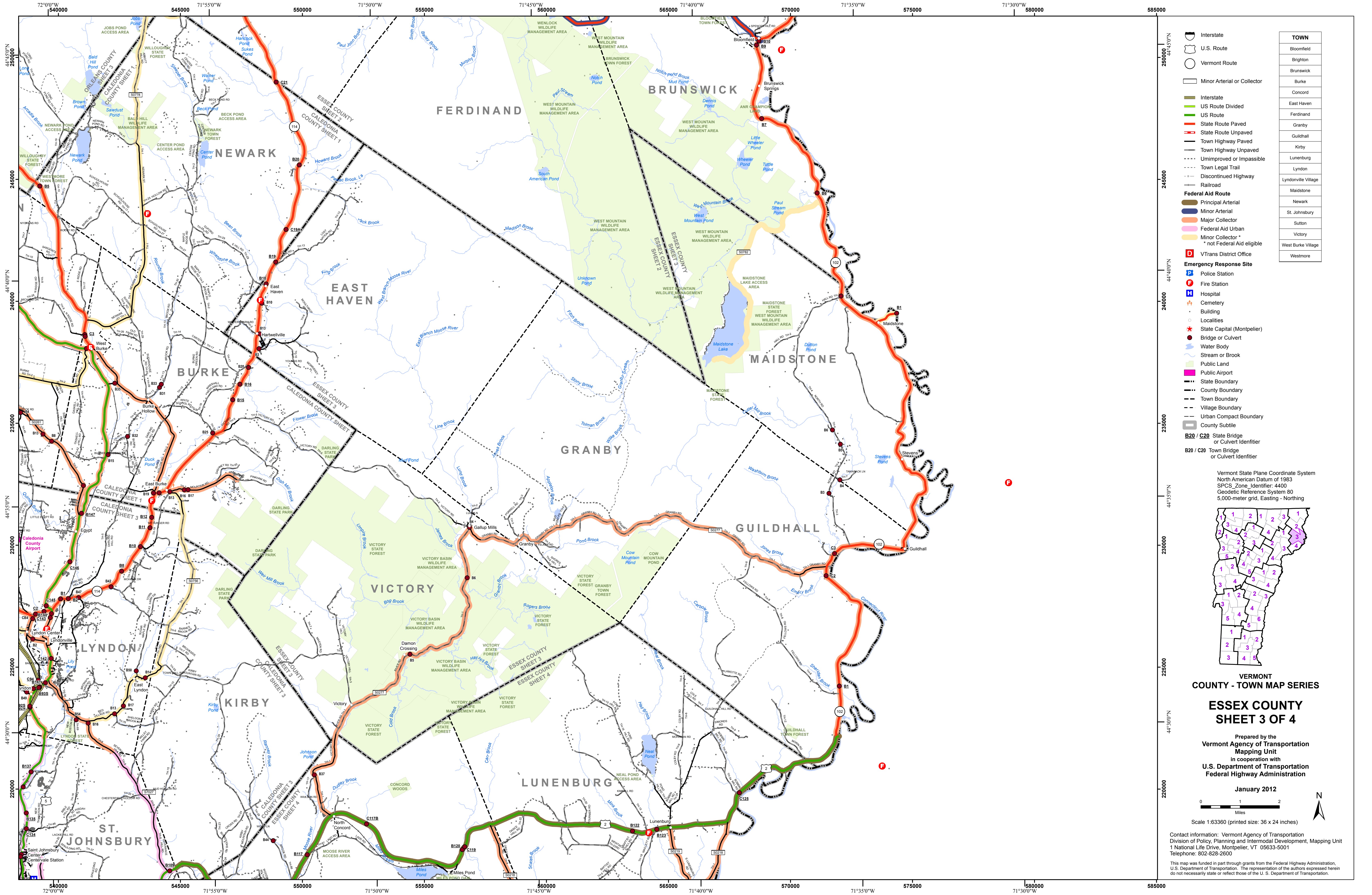
Prepared by the
 Vermont Agency of Transportation
 Mapping Unit
 in cooperation with
 U.S. Department of Transportation
 Federal Highway Administration

January 2012



Contact information: Vermont Agency of Transportation
 Division of Policy, Planning and Intermodal Development, Mapping Unit
 1 National Life Drive, Montpelier, VT 05633-5001
 Telephone: 802-828-2600

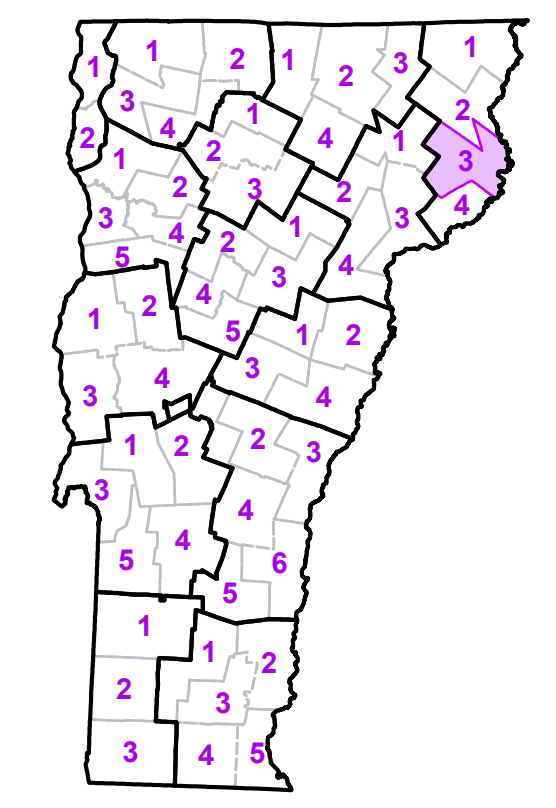
This map was funded in part through grants from the Federal Highway Administration,
 U.S. Department of Transportation. The representation of the authors expressed herein
 do not necessarily state or reflect those of the U.S. Department of Transportation.



	Interstate
	U.S. Route
	Vermont Route
	Minor Arterial or Collector
	Interstate
	US Route Divided
	US Route
	State Route Paved
	State Route Unpaved
	Town Highway Paved
	Town Highway Unpaved
	Unimproved or Impassible
	Town Legal Trail
	Discontinued Highway
	Railroad
	Federal Aid Route
	Principal Arterial
	Minor Arterial
	Major Collector
	Federal Aid Urban
	Minor Collector * * not Federal Aid eligible
	VTrans District Office
	Emergency Response Site
	Police Station
	Fire Station
	Hospital
	Cemetery
	Building
	Localities
	State Capital (Montpelier)
	Bridge or Culvert
	Water Body
	Stream or Brook
	Public Land
	Public Airport
	State Boundary
	County Boundary
	Town Boundary
	Village Boundary
	Urban Compact Boundary
	County Subtile
	B20 / C20 State Bridge or Culvert Identifier
	B20 / C20 Town Bridge or Culvert Identifier

TOWN
Bloomfield
Brighton
Brunswick
Burke
Concord
East Haven
Ferdinand
Granby
Guildhall
Kirby
Lunenburg
Lyndon
Lyndonville Village
Maidstone
Newark
St. Johnsbury
Sutton
Victory
West Burke Village
Westmore

Vermont State Plane Coordinate System
 North American Datum of 1983
 SPCS_Zone_Identifier: 4400
 Geodetic Reference System: 80
 5,000-meter grid, Easting-Northing

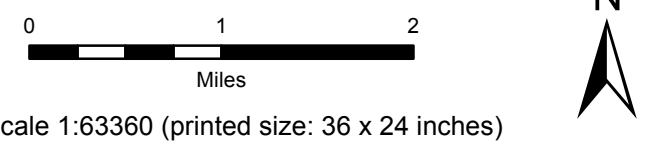


VERMONT
 COUNTY - TOWN MAP SERIES

ESSEX COUNTY
 SHEET 3 OF 4

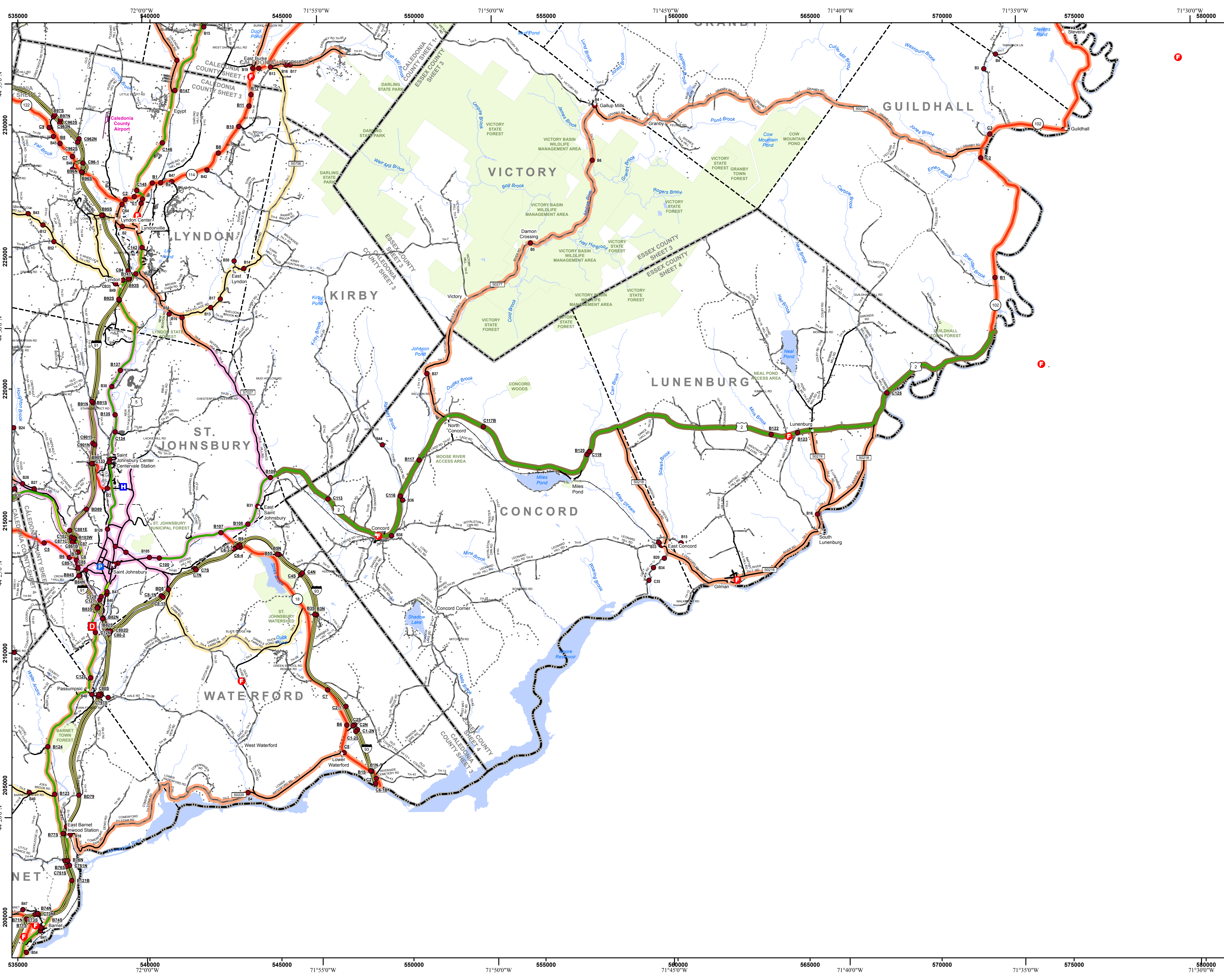
Prepared by the
 Vermont Agency of Transportation
 Mapping Unit
 in cooperation with
 U.S. Department of Transportation
 Federal Highway Administration

January 2012



Contact information: Vermont Agency of Transportation
 Division of Policy, Planning and Intermodal Development, Mapping Unit
 1 National Life Drive, Montpelier, VT 05633-5001
 Telephone: 802-828-2600

This map was funded in part through grants from the Federal Highway Administration,
 U.S. Department of Transportation. The representation of the authors expressed herein
 do not necessarily state or reflect those of the U.S. Department of Transportation.



- Interstate
 - U.S. Route
 - Vermont Route
 - Minor Arterial or Collector
 - Interstate
 - US Route Divided
 - US Route
 - State Route Paved
 - State Route Unpaved
 - Town Highway Paved
 - Town Highway Unpaved
 - Unimproved or Impassible
 - Town Legal Trail
 - Discontinued Highway
 - Railroad
- Federal Aid Route**
- Principal Arterial
 - Minor Arterial
 - Major Collector
 - Federal Aid Urban
 - Minor Collector *
* not Federal Aid eligible
- VTrans District Office
- Emergency Response Site**
- Police Station
 - Fire Station
 - Hospital
 - Cemetery
 - Building
 - Localities
 - State Capital (Montpelier)
 - Bridge or Culvert
 - Water Body
 - Stream or Brook
 - Public Land
 - Public Airport
 - State Boundary
 - County Boundary
 - Town Boundary
 - Village Boundary
 - Urban Compact Boundary
 - County Subtile
- B20 / C20** State Bridge or Culvert Identifier
B2 / C20 Town Bridge or Culvert Identifier

TOWN
Barnet
Burke
Concord
Danville
East Haven
Granby
Guildhall
Kirby
Lunenburg
Lyndon
Lyndonville Village
Maldstone
St. Johnsbury
St. Johnsbury U.C.
Sutton
Victory
Waterford
Wheelock

Vermont State Plane Coordinate System
 North American Datum of 1983
 SPCS_Zone_Identifier: 4400
 Geodetic Reference System 80
 5,000-meter grid, Easting - Northing

**VERMONT
 COUNTY - TOWN MAP SERIES**

**ESSEX COUNTY
 SHEET 4 OF 4**

Prepared by the
**Vermont Agency of Transportation
 Mapping Unit**
 in cooperation with
**U.S. Department of Transportation
 Federal Highway Administration**

January 2012

Scale 1:63360 (printed size: 36 x 24 inches)

Contact information: Vermont Agency of Transportation
 Division of Policy, Planning and Intermodal Development, Mapping Unit
 1 National Life Drive, Montpelier, VT 05633-5001
 Telephone: 802-828-2600

This map was funded in part through grants from the Federal Highway Administration, U.S. Department of Transportation. The representation of the authors expressed herein do not necessarily state or reflect those of the U.S. Department of Transportation.