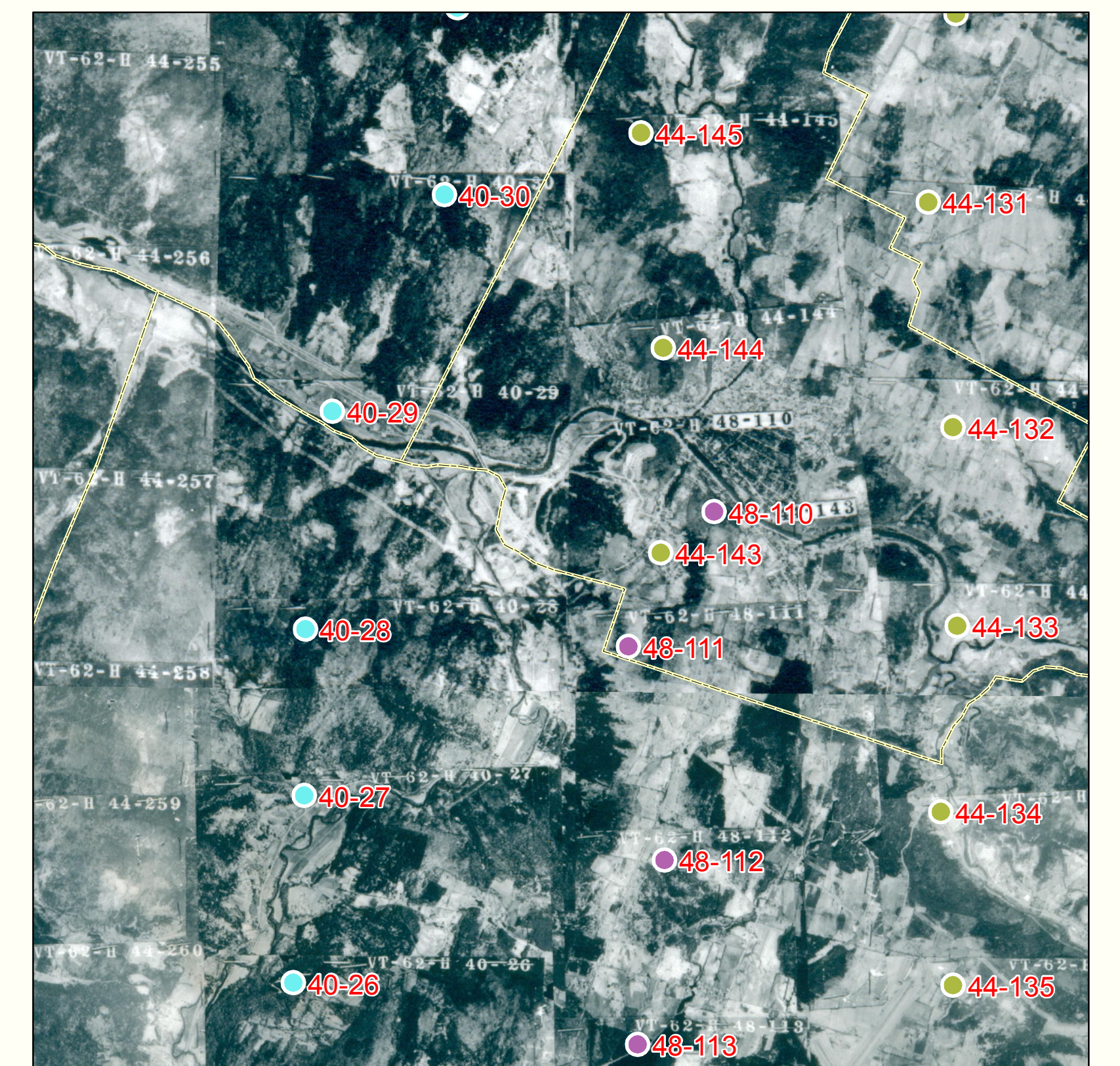
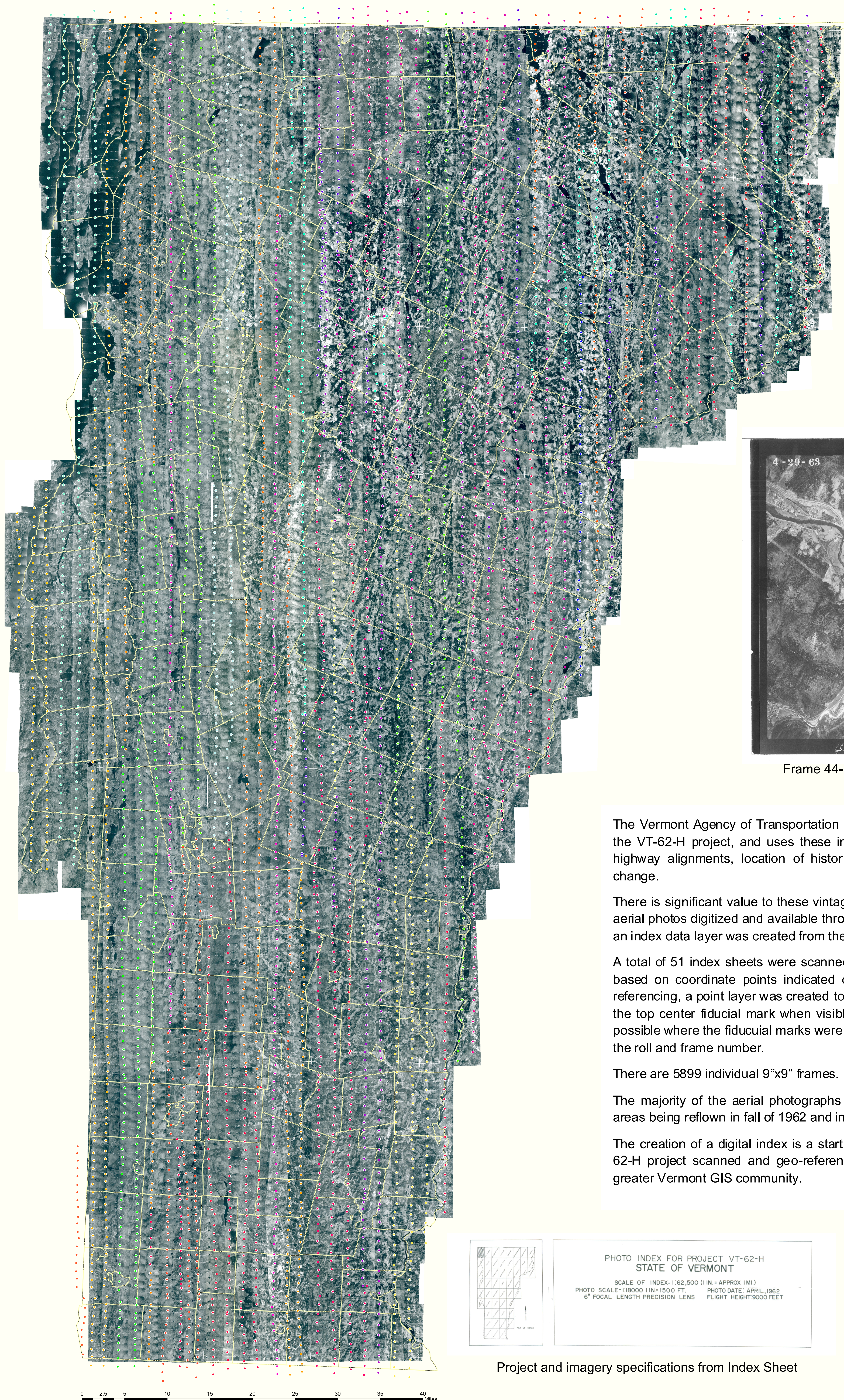


State of Vermont - Digital Index for the 1962 Aerial Photo Series - VT-62-H

This map was created to identify the location and total number of the individual 9"x9" frames created in the aerial photography project - VT-62-H.



Digital index of points for each aerial photo frame, referenced by roll and frame number.



Frame 44-144 covering Montpelier, Vermont

The Vermont Agency of Transportation houses a set of the 1962 aerial photos from the VT-62-H project, and uses these images as a resource for evaluation of past highway alignments, location of historic resources, and evaluation of landscape change.

There is significant value to these vintage aerial photos and interest in having these aerial photos digitized and available through ArcGIS. As a first step toward this goal, an index data layer was created from the original index sheets.

A total of 51 index sheets were scanned in full color at 600 dpi and geo-referenced based on coordinate points indicated on each index sheet. Following the geo-referencing, a point layer was created to represent each frame, with points placed on the top center fiducial mark when visible, and at other locations as consistently as possible where the fiducial marks were not visible. Each point has been coded with the roll and frame number.

There are 5899 individual 9"x9" frames.

The majority of the aerial photographs were taken in spring of 1962, with several areas being reflight in fall of 1962 and in the spring of 1963.

The creation of a digital index is a start toward getting each aerial photo in the VT-62-H project scanned and geo-referenced, which will need involvement from the greater Vermont GIS community.

PHOTO INDEX FOR PROJECT VT-62-H
STATE OF VERMONT

SCALE OF INDEX- 1:62,500 (1 IN. = APPROX 1 MI.)
PHOTO SCALE- 1:18000 (1 IN. = 1500 FT.) PHOTO DATE: APRIL, 1962
6" FOCAL LENGTH PRECISION LENS FLIGHT HEIGHT 9000 FEET

Project and imagery specifications from Index Sheet

State of Vermont
Agency of Transportation
Policy, Planning & Intermodal Development Division
Mapping Unit
July 2011

